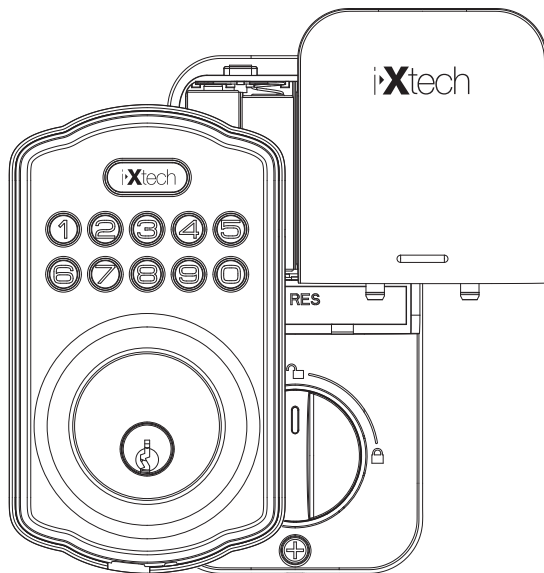




Installation Instructions

IX-THI01



iXtech

Installation Instructions



Before Installing the Lock, Check
Door Jamb and Door Preparation



Door thickness :
1-3/8" to 1-3/4"
(35mm to 51mm)

Backset:
2-3/8" or 2-3/4"
(60 mm or 70 mm)

2-1/8" (54mm)

2-1/8" (54mm)

1" (25 mm)



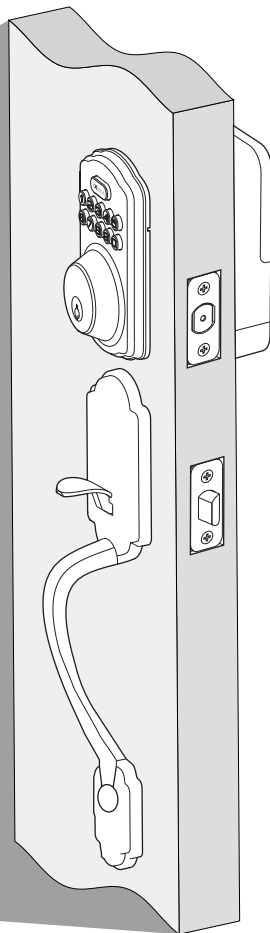
5" (127mm)

1" (25 mm)

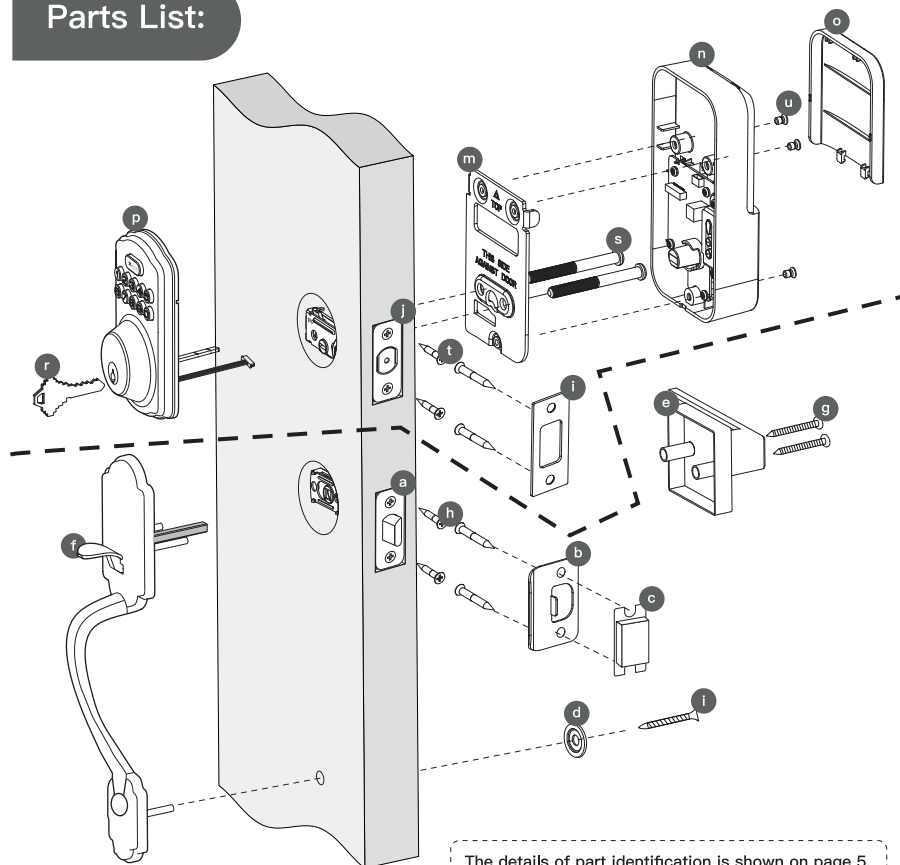


3/8" (10mm)

8-7/16" (214mm)

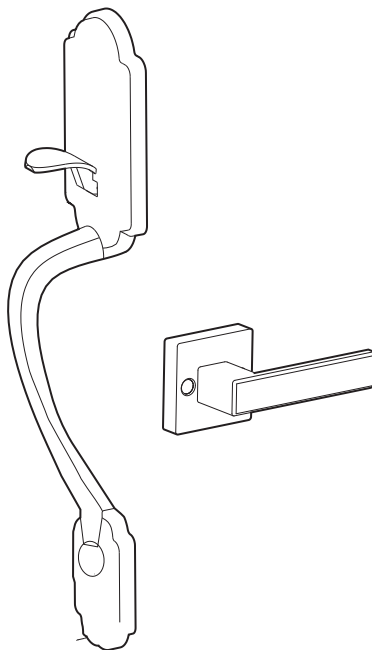


Parts List:



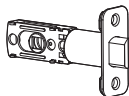


PART A



A: Parts identification

a



Latch

b



Strike

c



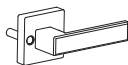
Dust Cover

d



Spacer

e



Handed Lever

f



Handleset

g



Screws

h



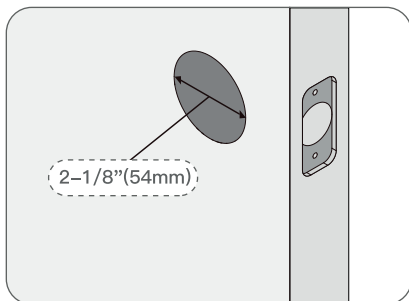
Screws

i

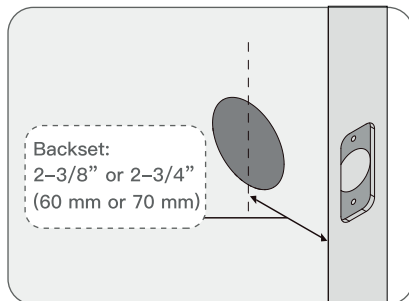


Screws

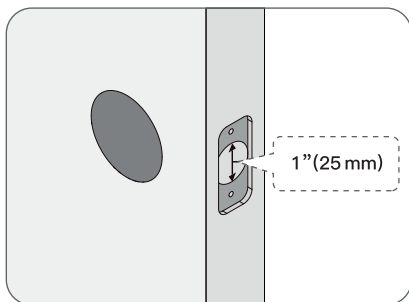
1. Prepare the door and check dimensions



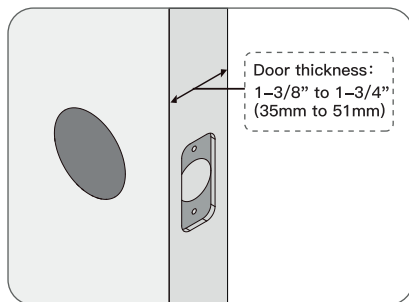
Measure to confirm that the hole in the door is 2-1/8\"(54mm).



Measure to confirm that the backset is either 2-3/8\" or 2-3/4\" (60 or 70mm).

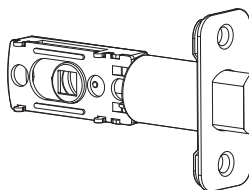
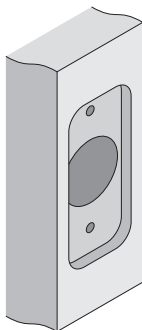


Measure to confirm that the hole in the door is 1\"(25mm).



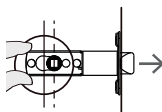
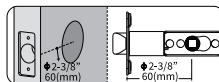
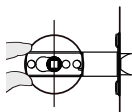
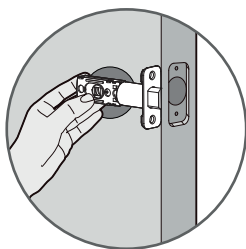
Measure to confirm that door thickness is between 1-3/8\" and 1-3/4\" (35 to 51mm)

2. Choose faceplate

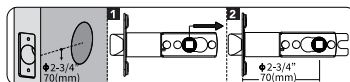


a

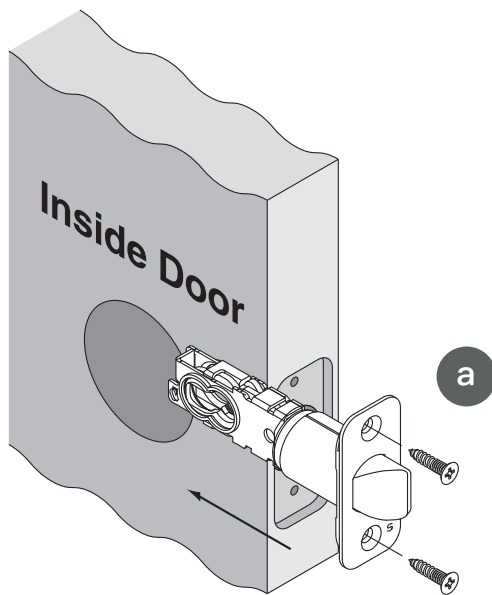
Is the slotted hole centered in the door hole?



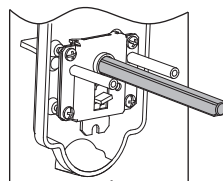
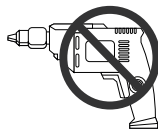
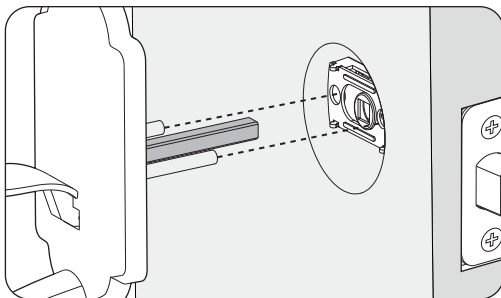
Bolt ships with backset in 2-3/8" (60mm) position. If required, turn the bolt case and pull to extend to 2-3/4" (70mm) backset position.



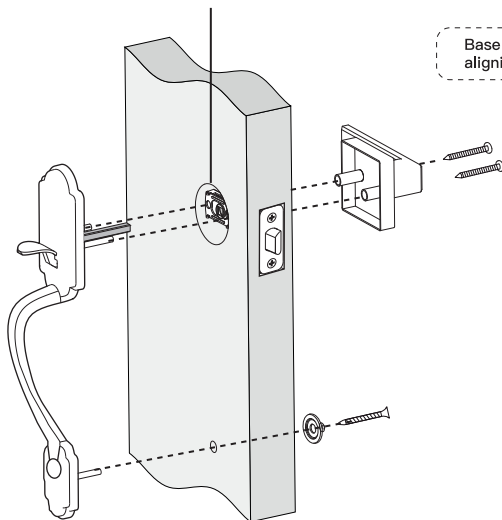
3. Install latch



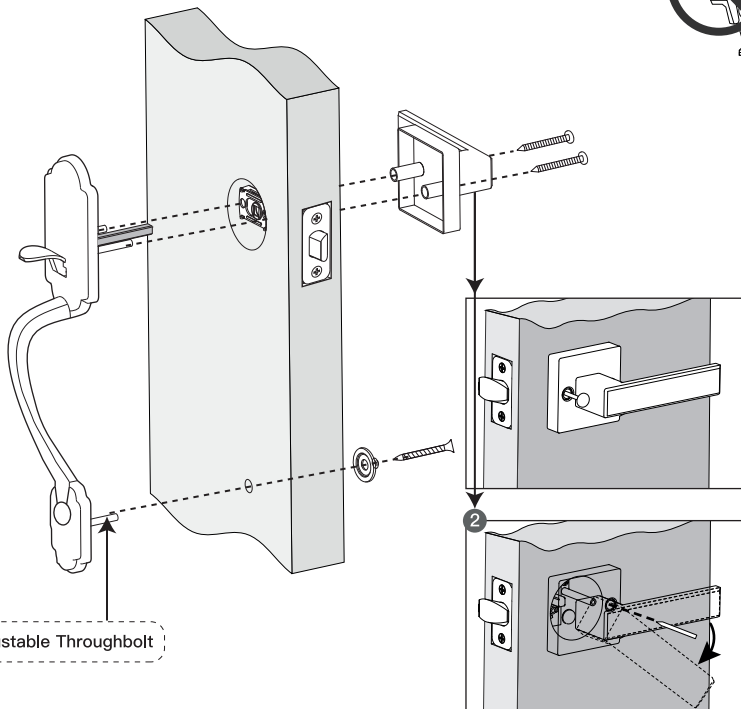
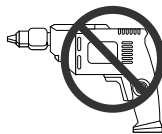
4. Install handleset



Base of spindle must be rotated
aligning to the hole.



. Install lever



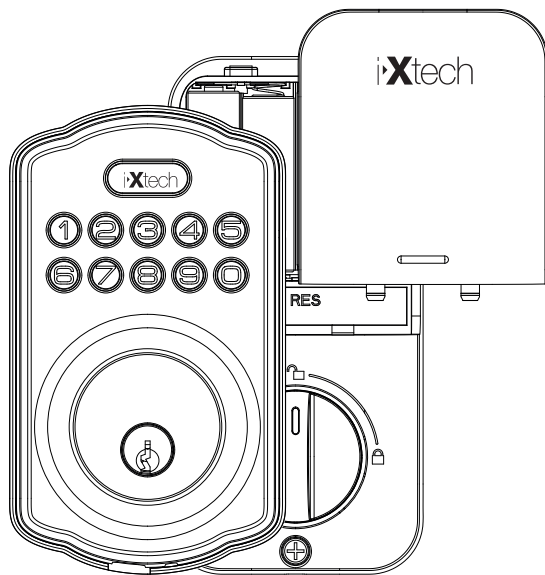
Adjustable Throughbolt

Test the lock after installation.

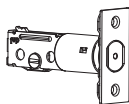
Keep the door opened, retract the latch by pressing knob from outside and pushing the lever from inside of the door to test if the lock works smoothly.



PART B



B: Parts identification



Latch

j



Drive-In Collar

k



Strike

l



Mounting Plate

m



Interior Assembly

n



Battery Cover

o



Exterior Assembly

p



Reset Tool

q



Backup Key

r



Screws

s



Screws

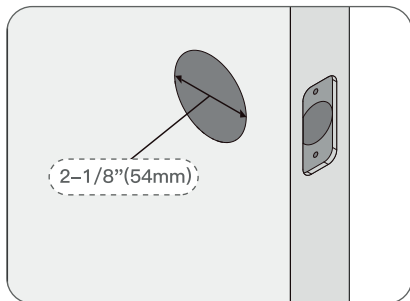
t



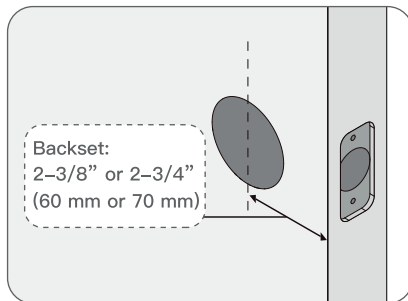
Screws

u

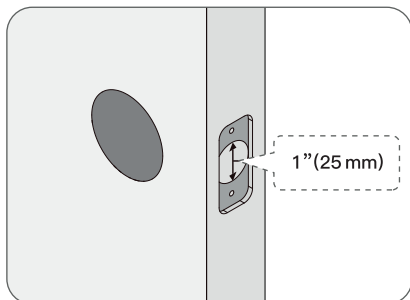
1. Prepare the door and check dimensions



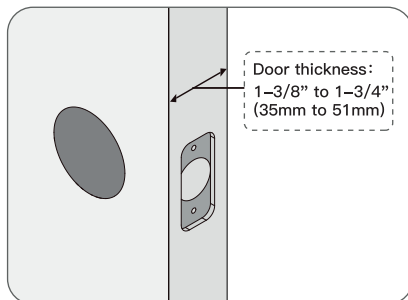
Measure to confirm that the hole in the door is 2-1/8" (54mm).



Measure to confirm that the backset is either 2-3/8" or 2-3/4" (60 or 70mm).

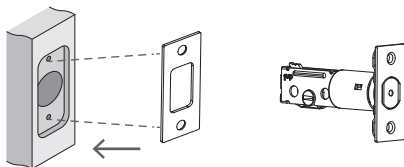


Measure to confirm that the hole in the door is 1" (25mm).

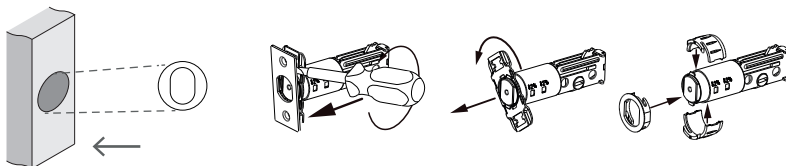


Measure to confirm that door thickness is between 1-3/8" and 1-3/4" (35 to 51mm).

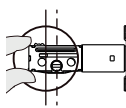
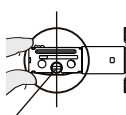
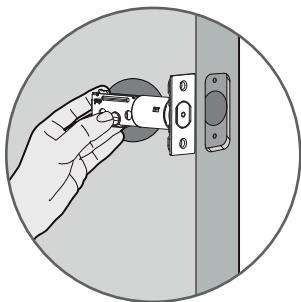
2. Choose faceplate



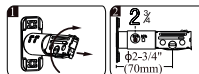
OR



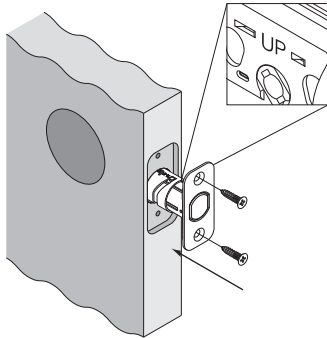
Is the slotted hole centered in the door hole?



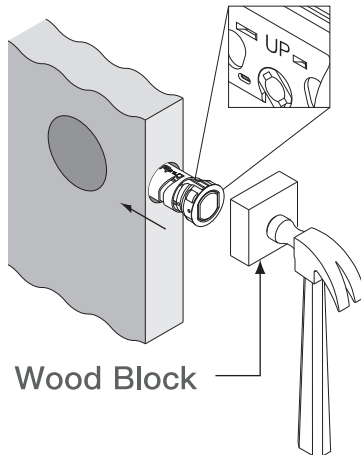
Rotate and pull the latch
as shown to extend latch.



3. Install latch and deadbolt

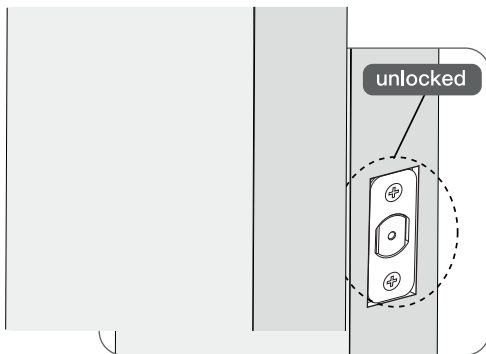
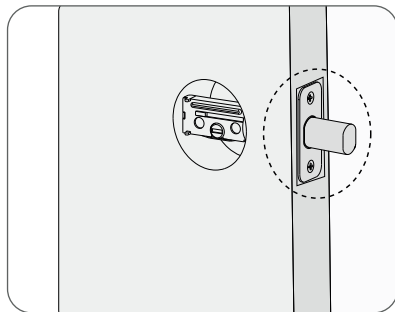


OR

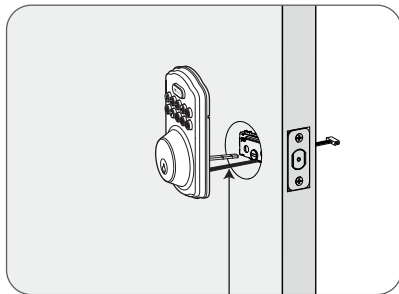




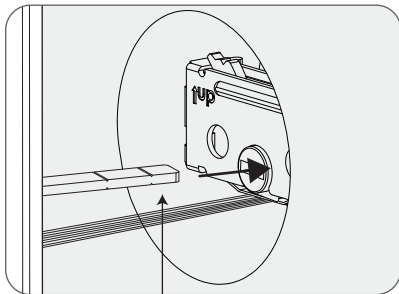
IMPORTANT: Keep the latch in unlocked position before installation.



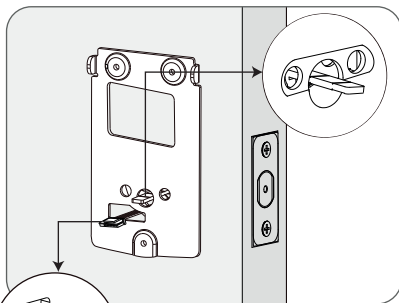
4. Install exterior assembly



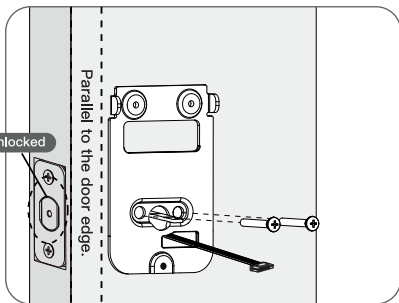
Route the cable below the latch.



IMPORTANT: Bolt must be in unlock position.
Note horizontal orientation of torque blade.



Route the cable through the hole in the mounting plate.

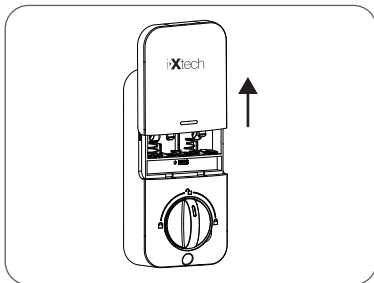


Secure the mounting plate with the supplied screws.

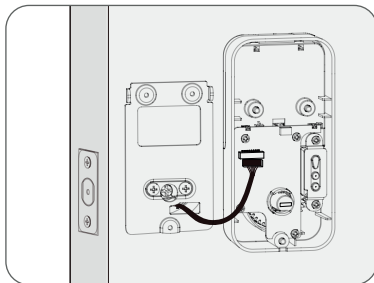
5. Install interior assembly



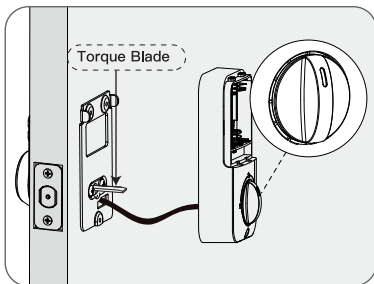
Do not load batteries until lock is completely installed.



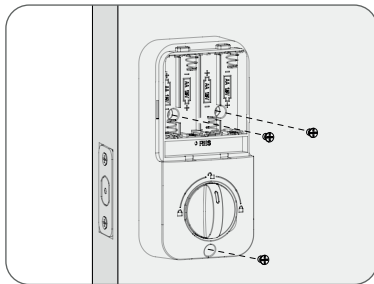
Remove the battery cover.



Connect the cable and ensure tight cable connection.



Rotate the Thumb turn in vertical position and insert the horizontal orientation of torque blade into the inside escutcheon.

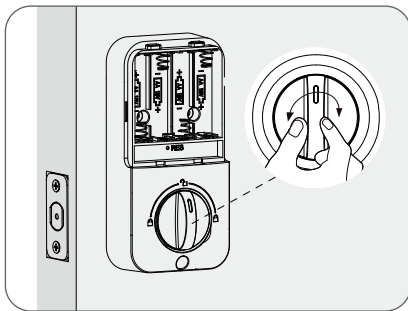


Secure the interior assembly with the supplied screws.

5. Install interior assembly



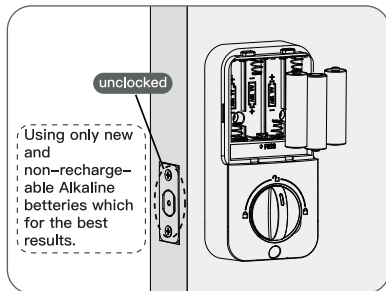
Do not load batteries until lock is completely installed.



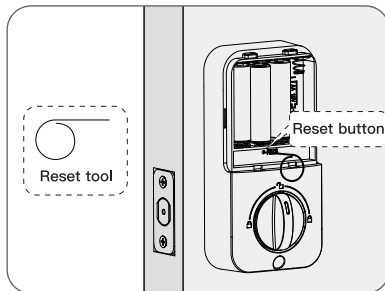
Test the lock by rotating the thumb turn to see if the bolt can be extended and retracted smoothly.

6. Detect left/right hand door installation

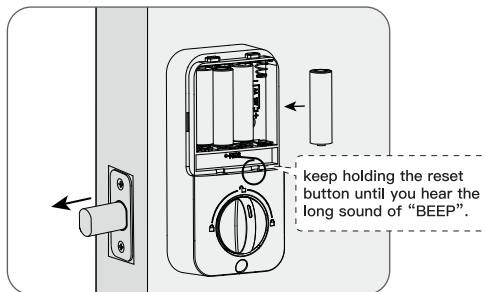
⚠ IMPORTANT: This step is required and crucial for the lock after installation!



While the door is open and unlock, load 3AA batteries into the interior assembly.



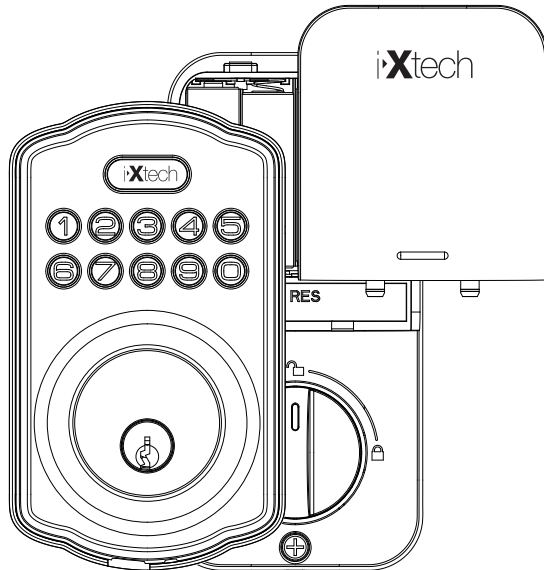
Press and hold the reset button on the interior assembly using the reset tool provided in package.



Load the last battery and keep holding the reset button for 3 seconds, until you hear the long sound of "BEEP", the latch bolt will extend to learn the orientation of the door.



Programming Instructions



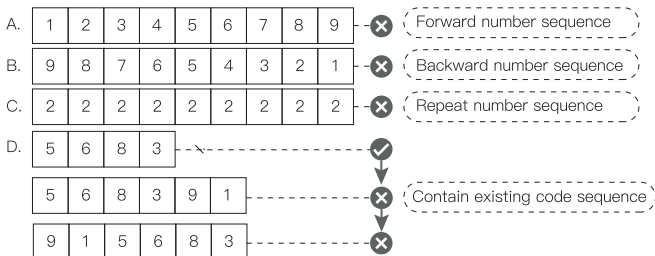
Information and safety warnings



Do not load batteries until lock is completely installed.

- Protect your user codes and master code.
- Restrict access to your lock's interior assembly and routinely check your settings to ensure they have not been altered without your knowledge.
- This lockset is designed to provide the highest standard of product quality and performance. Care should be taken to ensure a long-lasting finish. When cleaning is required use a soft and damp cloth. Using lacquer thinner, caustic soaps, abrasive cleaners or polishes could damage the coating and result in tarnishing.

1. Master PIN Code (4~10 digits): The default master pin code is "12345678", It's required that you change it to a code of your own before programming.
2. User PIN Code (4~10 digits): A total of 20 user codes (and one temporary one-time user code) may be programmed.
3. Both master and user PIN codes don't support the following combination of numbers.



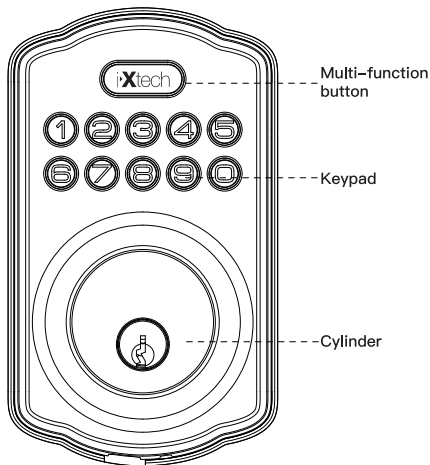
Parts illustrations



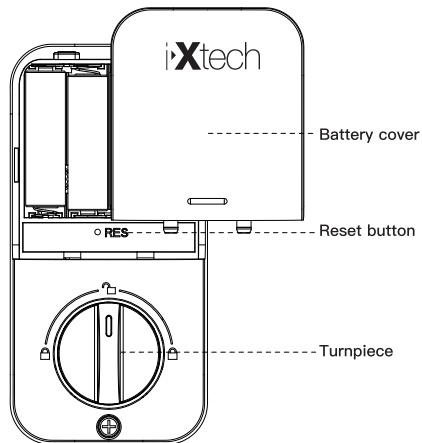
The default master code is 12345678. It's required that you change it to a code of your own before programming.

ITEM	SPECIFICATIONS	REMARKS
Battery (Using only new and non-rechagerable Alkaline batteries which for the best results.)	AA alkaline battery x4 (Operation voltage:4.6~6.0V)	Last up to one year (10 times open/close per day)

Exterior assembly



interior assembly



Definitions

Master code:

Required for programming and feature settings, Master code can be used to unlock the door under vacation mode. The default master code needs to be changed before programming. (Property owner/manager should keep this information confidential.)

Auto lock:

Automatically locks the deadbolt 30 seconds after unlocking. This feature is off by default. You can set the Auto lock delay between 10 and 99 seconds.

Wrong entry limit:

After 10 unsuccessful attempts at entering a valid PIN code, the unit will shut down for 3 minutes.

Silent mode:

The beep sounds when pressing keypad can be muted. But you will still hear low battery and system alerts.

Vacation mode:

This is a security feature for you when you are leaving your home for vacation or long trip. Enabling vacation mode will restrict all user codes until master code is entered on keypad. If the lock is unlocked by thumb turn, the lock will sound an alarm.

One time user code:

This code can only be used once and is automatically deleted when used.

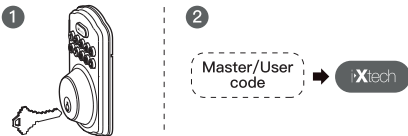
Unlock with fake code:

User can prevent PIN code exposure strangers by entering random digits before or after PIN code.

83618 137192 14710
 PASSWORD
-----RANDOM DIGITS-----

How to use?

Unlock the door from outside



Unlock the door from inside



Rotate the turnpiece unlock position.

Lock the door from outside

Auto re-lock mode

In auto re-lock mode, the bolt will extend out automatically in 30 seconds after unlocking.

Manual mode

Press any of the buttons on keypad for 2 seconds.



Lock the door from inside

Auto re-lock mode

In auto re-lock mode, the device will be automatically.

Manual mode

Rotate the turnpiece to lock position.



Factory default settings

SETTINGS	FACTORY DEFAULT
Master code	12345678
Auto lock	Disabled
Silent mode	Disabled
Wrong code entry limit	10 times
Shutdown time	3 mins
Vacation mode	Disabled

Restore factory default settings



This procedure will delete all user codes which associated with the lock.

1. Keep the door opening and unlocking;
2. Press and hold the reset button, taking out one battery and then place it back at the same time;
3. Keep holding the reset button for 3 seconds until you hear the sound of "BEEP".

Troubleshooting

• The turnpiece can't rotate or operate the lock?

Remove and re-install the lock, making sure that the turnpiece is in vertical position.

• The lock can't be locked or unlocked by keypad?

Make sure that the codes are not disabled. If needed, restore the lock's default settings.

• The keypad doesn't respond when touched(no lights are visible and no beeping is heard)?

Make sure the cables are properly connected, and make sure the batteries are new installed correctly.

• After the installation of batteries, there is no response when you press any button and no beeps are heard.

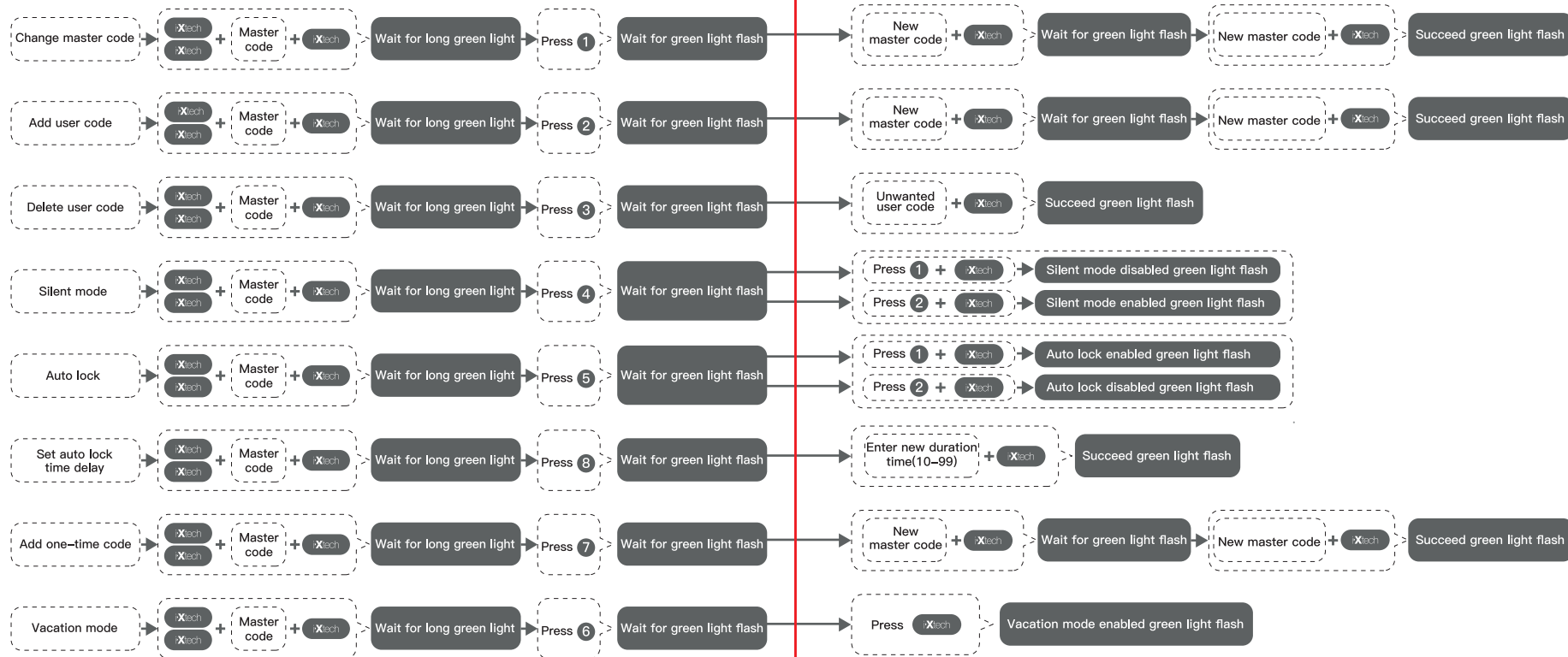
Check the cable connection and the polarity of the batteries. also make sure the batteries are not dead.

• Forget your master codes?

Perform a reset in order to erase all passcodes. Once the reset is complete, all passcodes will be erased and the master code will return to the default value(12345678).

Quick set up

⚠ The default master code is 12345678. It's required that you change it to a code of your own before programming.



When setting is unsuccessful, the indicator light will flash red.

Email: spaceofelectronics@gmail.com