

# User Manual

## C100 Plus Series

## Keypad Digital Deadbolt with Wi-Fi

Manuel de l'Utilisateur

Manual de Usuario



**DESLOC**™

## English

01

1. Product functional parts diagram.....	01
2. Product Installation Instructions.....	02
3. Function Description.....	08
4. Warning Statement.....	09

## Français

11

1. Illustration des composants fonctionnels.....	11
2. Description de L'installation du Produit.....	12
3. Description de L'utilisation des Fonctions.....	18
4. Avertissement et déclaration.....	19

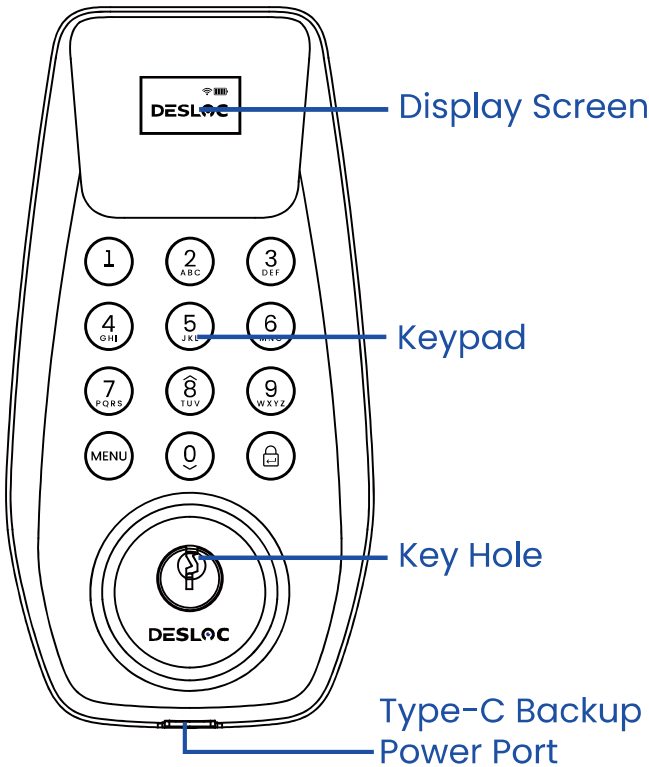
## Español

21

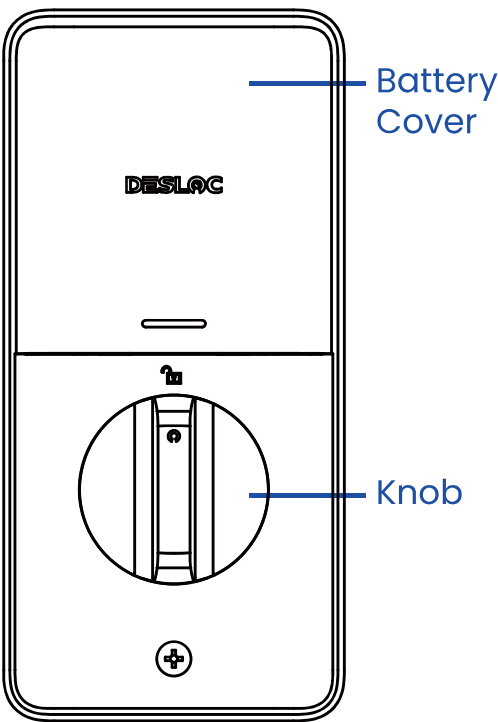
1. Leyendas de componentes funcionales.....	21
2. Instrucción de Instalación.....	22
3. Instrucción de Funciones.....	28
4. Advertencia.....	29

# 1. Product Functional Parts Diagram

## Exterior Lock

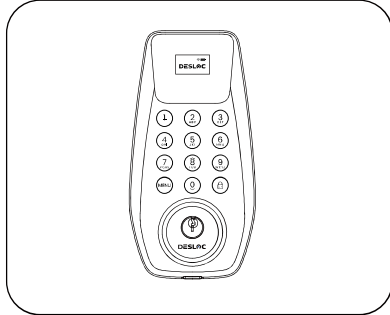


## Interior Lock

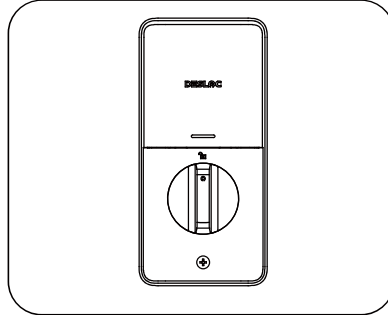


## 2. Product Installation Instruction

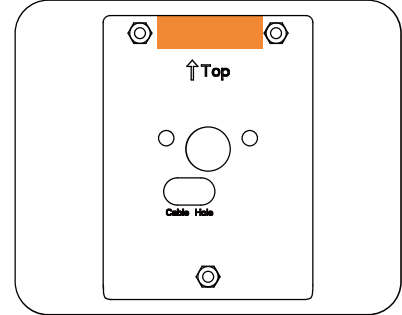
### 2.1 Parts List



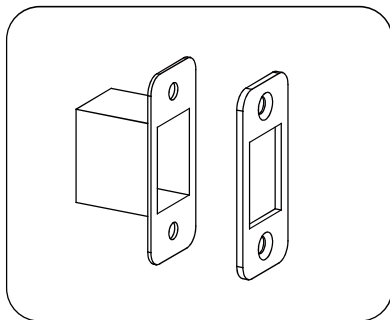
a. Exterior Lock



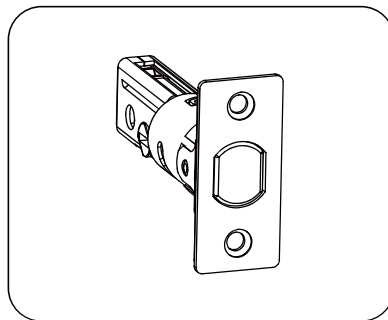
b. Interior Lock



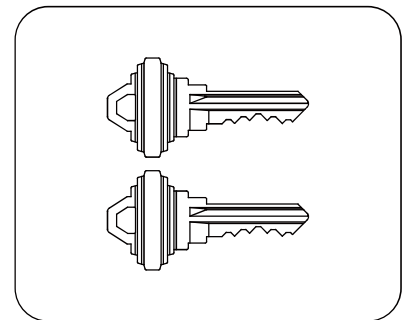
c. Mounting Plate



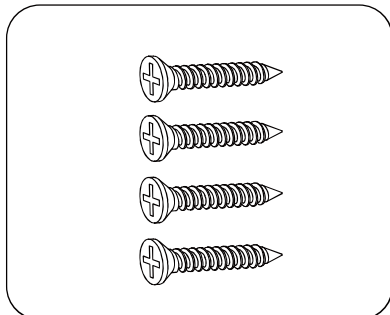
d. Strike Plate



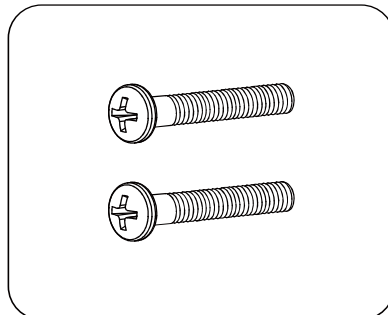
e. Deadbolt



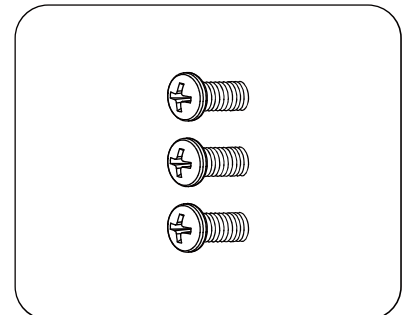
f. Mechanical Keys



g. Deadbolt/Strike  
Plate Screws

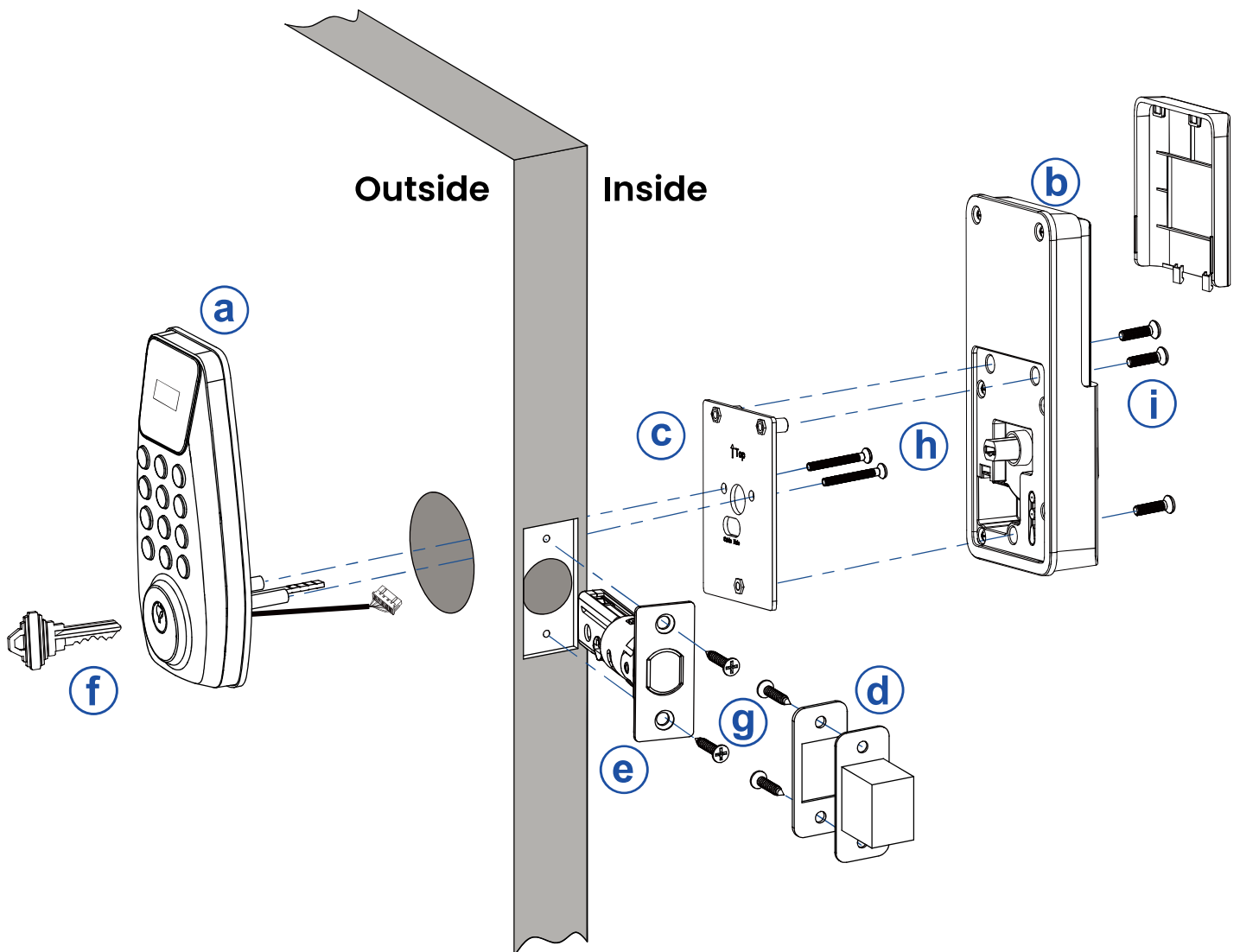


h. Mounting  
Plate Screws



i. Interior Lock  
Screws

## 2.2 Exploded View and Videos of Installation

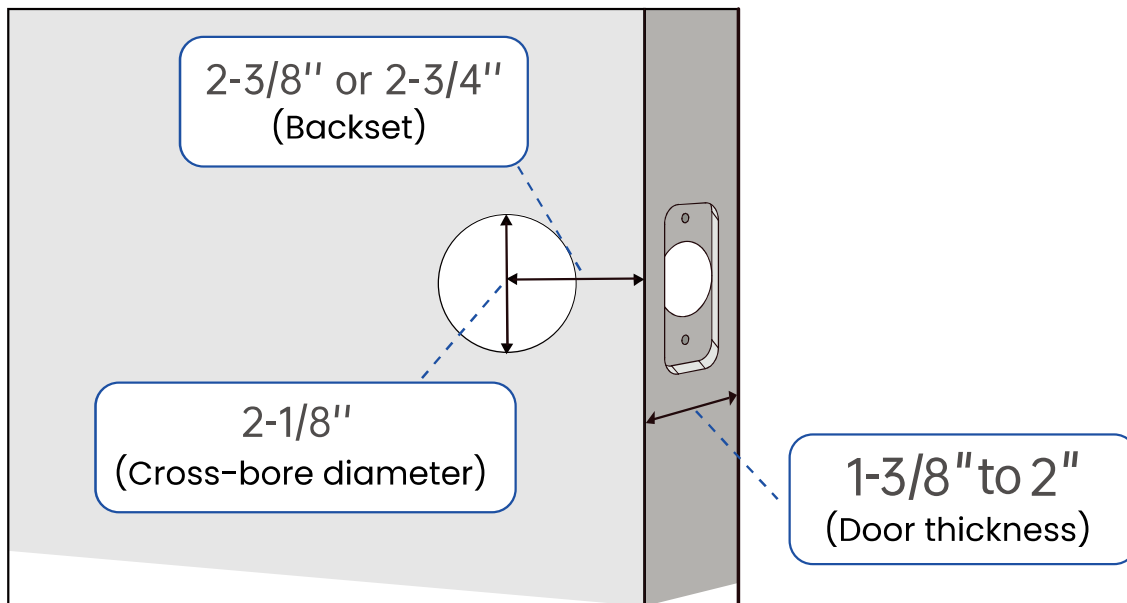


Installation and function  
operation video code

## 2.3 How to Install the Lock

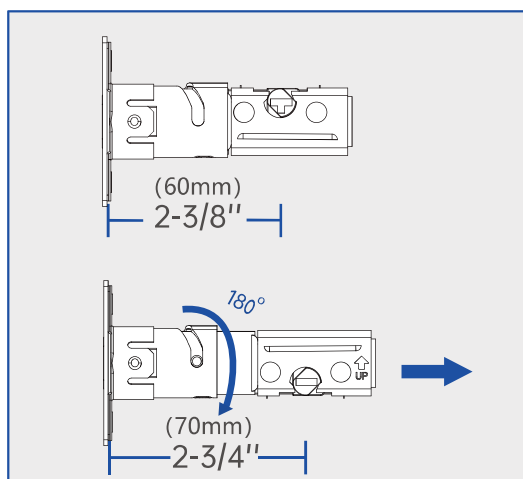
### 2.3.1 Measure the Door Size

Make sure the door has a thickness of 1-3/8" to 2", a hole diameter of 2-1/8", and a measured backset size of 2-3/8" or 2-3/4" with the deadbolt.



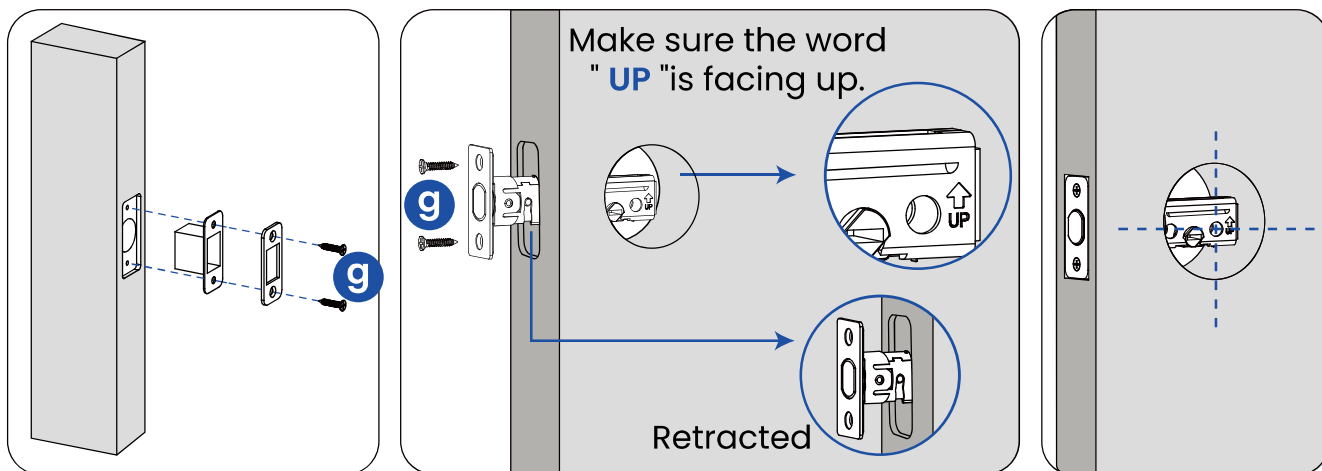
### 2.3.2 Adjust the Length of the Deadbolt

Check your door to see if the deadbolt requires adjustment. If the backset is 70 mm, turn the faceplate 180° to extend the length.



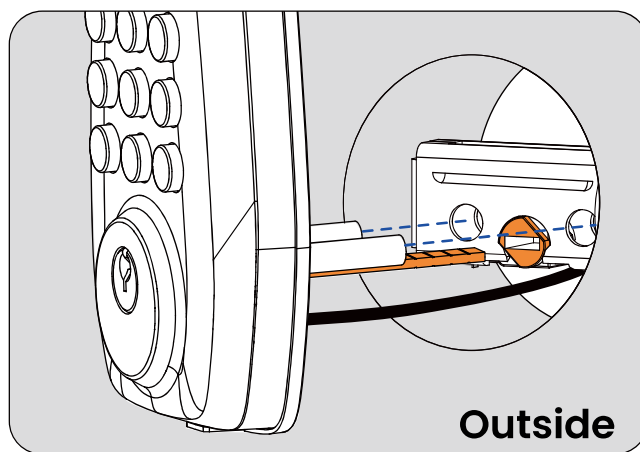
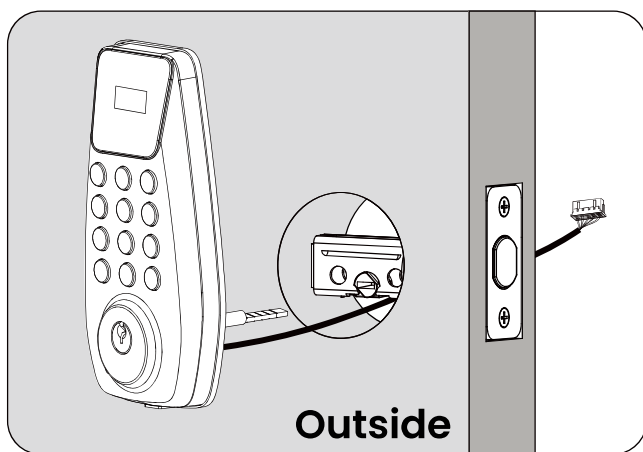
## 2.3.3 Install Deadbolt

Fix the deadbolt with 2 deadbolt screws **g** and **keep it retracted**.



## 2.3.4 Install Exterior Lock

Route the cable below the deadbolt; the paddle must be in 'horizontal' status.



### NOTE:

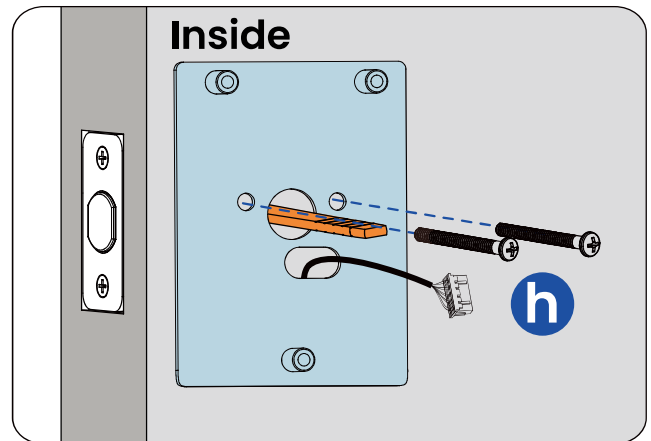
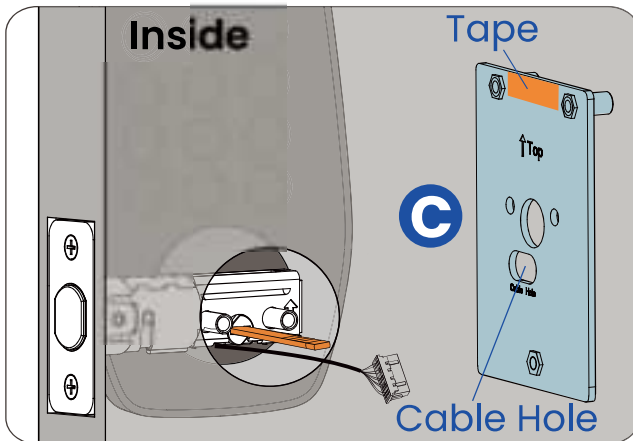
Do not insert the key during the installation.

### NOTE:

The deadbolt must be in the **unlock position**, and the paddle must be in **'horizontal'** status.

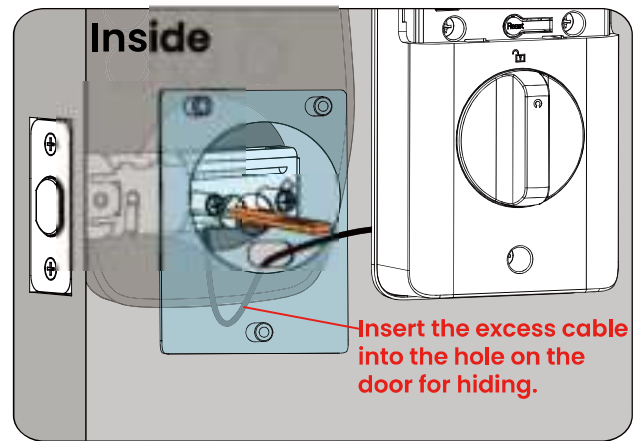
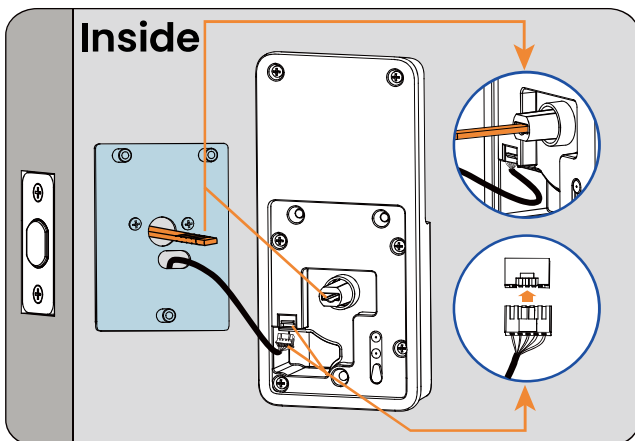
## 2.3.5 Fix the Mounting Plate

- Peel the tape off the mounting board and thread the cable through the hole in the mounting plate.
- Fix the plate with 2 mounting plate screws **h**.



## 2.3.6 Install the Interior Lock

- Connect the cable securely.
- Turn the doorknob horizontally and insert the paddle (Do not insert batteries until the lock is fully installed).




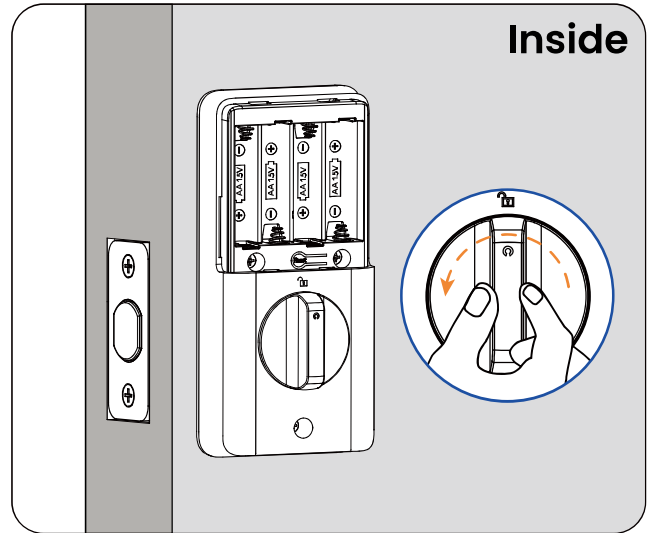
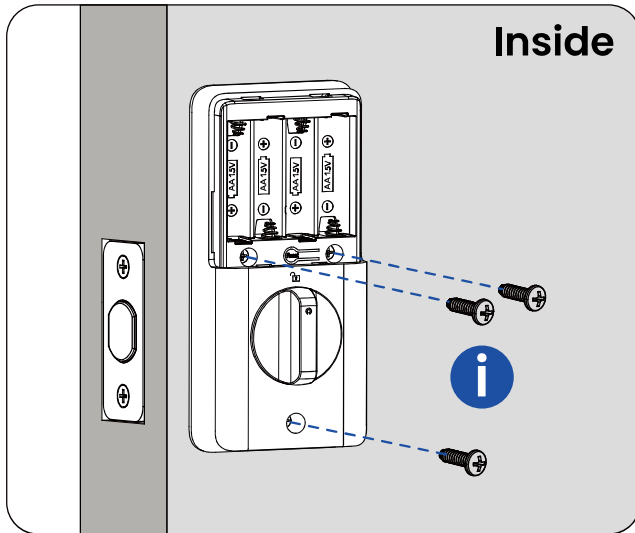
### NOTE:

When pressing the indoor panel against the door, try to conceal the wires inside the door or place them in the designated wire-housing areas on the indoor panel.



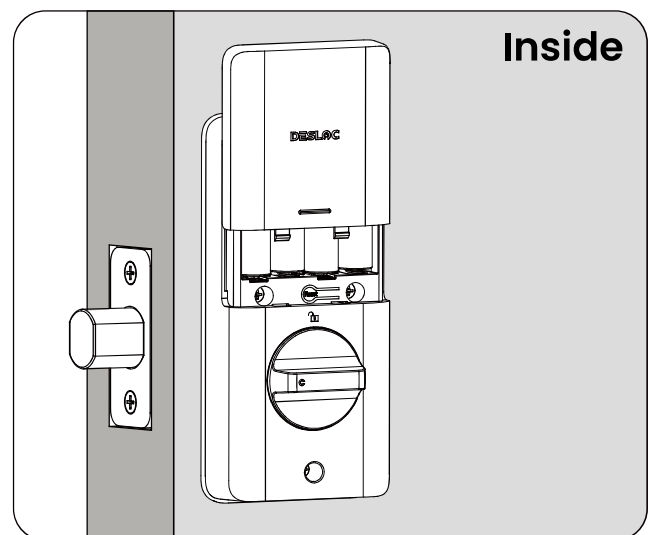
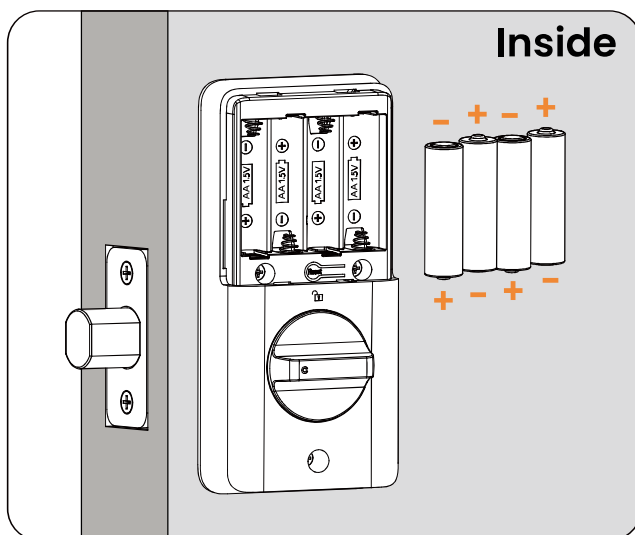
## 2.3.7 Fix the Interior Lock

- Open the battery cover.
- Secure the lock with 3 interior lock screws .
- Turn the doorknob to test if the deadbolt can be smoothly extended and retracted.



## 2.3.8 Install Batteries

Place the batteries in position and close the battery cover.



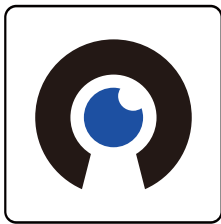
### NOTE:

Please use new AA alkaline batteries. Do not use rechargeable batteries. Do not mix old and new batteries.

## 3. Function Description

### 3.1 App Download

Scan the QR code below, download DESLOC App from the App Store or Google Play according to the introduction and instructions on the website, and learn about the relevant functions and information of the DESLOC App from the website.



Download on the  
**App Store**



GET IT ON  
**Google Play**

 Scan me

### 3.2 Function

Please Scan the QR codes below to get the operation instructions of the equipment.



**Installation and function  
operation video code**



**Functional operation  
manual code**

#### NOTE:

This device has two operation modes, one is stand-alone mode, and the other is App mode. The two modes cannot run simultaneously. When one mode is selected, the other mode will be disabled and cannot be available.

- 1. If the stand-alone mode is selected:** No App is downloaded, and you can directly operate the device; enter the initial passcode "123456" and modify and activate it;
- 2. If the App mode is selected:** Please scan the QR code or download the App in the App Store, and then add the device;
- 3. To switch the operation mode:** Restore the device to factory settings.

# 4. Warning Statement

## 4.1 FCC Caution

This device complies with part 15 of the FCC Rules. Operation is subject to the following two conditions: (1) This device should not create harmful interference, and (2) this device must be able to handle any interference it receives, even if it disrupts its operation.

Any changes or modifications not expressly approved by the party responsible for compliance could void the user's authority to operate the equipment.

### NOTE:

This device has been tested and found to comply with the limits for a Class B digital device, pursuant to part 15 of the FCC Rules. These limits are designed to provide reasonable protection against harmful interference in a residential installation. This device produces and emits radio frequency energy, and if not installed and operated as instructed, it could disrupt radio communications. However, there is no guarantee that interference will not occur in a particular installation. If this device results in interference to radio or television reception, which can be identified by power cycling the equipment, the user is advised to attempt to resolve the interference using the following steps:

- Reorient or relocate the receiving antenna.
- Increase the distance between the equipment and receiver.
- Connect the device to a circuit that is different from the one the receiver is using.
- Contact the dealer or an experienced radio/TV technician for help.

This device complies with FCC radiation exposure limits set forth for an uncontrolled environment. This device should be installed and operated with a minimum distance of 20 cm between the radiator and your body.

## 4.2 ISED Statement

This device complies with Industry Canada license - exempt RSS standard(s).

Operation is subject to the following two conditions: (1) This device may not cause interference, and (2) This device must accept any interference, including interference that may cause undesired operation of the device.

The digital apparatus complies with Canadian CAN ICES - 3 (B)/NMB - 3(B).

This device meets the exemption from the routine evaluation limits in section 2.5 of RSS 102 and compliance with RSS 102 RF exposure, users can obtain Canadian information on RF exposure and compliance.

This equipment complies with Canada radiation exposure limits set forth for an uncontrolled environment.

This equipment should be installed and operated with minimum distance 20cm between the radiator & your body.

## 4.3 Product Disclaimer

We (DESLOC) will not be liable for any of the following actions or circumstances.

The touch screen of this product is made of glass. If this product is dropped on a hard surface or subjected to a serious collision, the glass may break. To reduce the risk of being cut by glass fragments or cracks, do not touch or attempt to remove broken glass.

This product contains small parts that may pose a choking hazard to children under the age of 3. Please keep children away from these small parts.

The product may not work normally due to your own behavior or the malicious act of a third party or a low probability of quality problems. Do not attempt to gain access to the house through the window or break the door violently, which may lead to property damage or even personal damage. If you find this kind of situation, please put safety first and contact DESLOC after-sales team at [support@desloc.com](mailto:support@desloc.com) or its designated staff through other channels in time. DESLOC will offer technical support for you as soon as possible and provide you with a replacement if the lock cannot be repaired in time.

## 4.4 Copyright Notice

© 2025 Zhejiang Desman Intelligent Technology Co., LTD. All rights reserved.

No part of this document may be reproduced, transmitted, distributed, or stored in any form or by any means without the prior written consent of Zhejiang Desman Intelligent Technology Co., LTD. (hereinafter referred to as 'Desman'). The products described herein may include software copyrighted by Desman and/or third parties. Unless explicitly authorized by the relevant rights holders, no individual or entity may reproduce, distribute, modify, extract, decompile, disassemble, decrypt, reverse engineer, rent, transfer, sublicense, or otherwise infringe upon the copyrights of any such software.

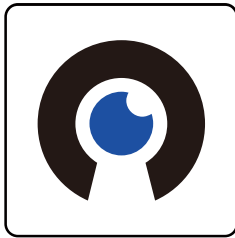
## 4.5 Trademark Notice

- DESMAN™, DESSMANN™, DESLOC™, DESLOC™ are trademarks or registered trademarks of Zhejiang Desman Intelligent Technology Co., LTD. and Hangzhou Key to the Future Technology Co., LTD.
- The iPhone logo and iPhone are trademarks or registered trademarks of Apple Inc.
- The Google logo and Google are trademarks or registered trademarks of Google LLC.
- All other trademarks and company names mentioned in this document are the property of their respective owners.

## 4.6 About this document

- This document applies to multiple product models. Please refer to the actual item for the appearance and functionality.
- The user shall bear any loss resulting from failure to follow the instructions in this document.
- This document will be updated as needed in accordance with the laws and regulations of the relevant regions. For details, please refer to the product's printed materials, digital copy, QR code, or official website. In case of any discrepancy between the printed and electronic versions, the electronic version shall prevail.
- Our company reserves the right to modify any information in this document at any time. All changes will be incorporated into the latest version without prior notice.
- This document may contain technical inaccuracies, inconsistencies with product features or operation, or printing errors. The company's final interpretation shall apply.
- If the downloaded PDF file cannot be opened, please use the latest version of a commonly used PDF reader.

# DESLOC<sup>TM</sup>



Download on the  
**App Store**



GET IT ON  
**Google Play**

**Follow the Instruction and  
Download the DESLOC App**



**Installation and function  
operation video code**



**Functional operation  
manual code**



[www.desloc.com](http://www.desloc.com)



+1 (888) 572 6136



[support@desloc.com](mailto:support@desloc.com)



12-month warranty

Garantie de 12 mois

Garantía con 12 meses