

SECURITY LIGHTS

SSL-B2-5CCT



PIR Motion Sensor D2D Mode

HIGHLIGHTS

The New Generation Security Light Comes With 5CCT & Build-in Motion Sensor

- Light heads can be adjusted to desired position
- Motion sensor can be side-to-side and up and down movement
- PIR motion sensor and D2D mode
- Detection Angle: up to 180°
- Can be wall mounted or ceiling mounted in a soffit
- Detection distance, MODE and time are adjustable
- Rated for long life - over 50,000 hours

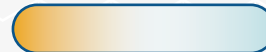


CERTIFICATIONS



COLOUR TEMPERATURE

2700K / 3000K / 4000K / 5000K / 6500K (Selectable)



SPECIFICATIONS

MODEL	SSL-B2-5CCT
Wattage	15W
Voltage	120V AC, 60Hz
Lumens	1500 lmn
Beam Angle	120°
Lifetime	50,000 hours
Dimmable	No
CRI	>80
Rating	IC rated/Outdoor use/ Wet Location
Grade of Protection	IP65
Application	Entryways / Front porch / Backyard / Sheds / Decks / Walkways / Fences
Operating Temperature	-30°C ~ +50°C
Case Quantities	18

NO MOTION GOES UNNOTICED

5 YEAR WARRANTY

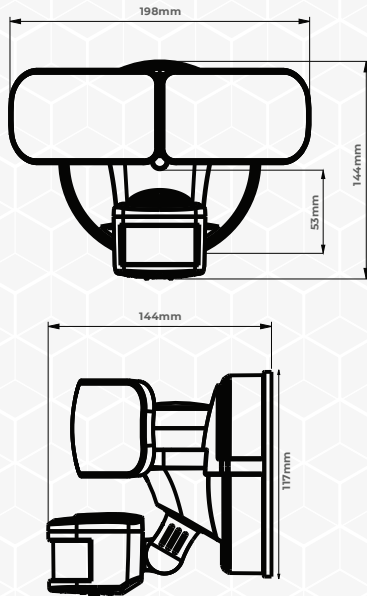
ORTECH reserves the right to modify at any time, without notice, any or all of our product's features, designs, components and specifications to meet market changes.



SECURITY LIGHTS

SSL-B2-5CCT

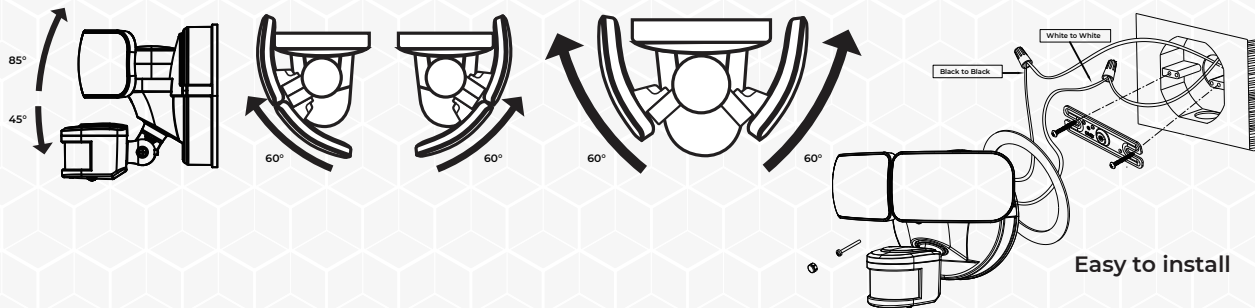
DIMENSIONS



AVAILABLE FINISHES



INSTALLATION



SETTING THE MOTION SENSOR

MODE SETTING

OFF MODE: No one is detected at night, the light goes out. Sensing a human delay (according to the TIME knob delay), the light will turn on at 100%.

AUTO MODE: The non sensing human light maintains 30% brightness at night. Sensing a human delay (according to the TIME knob delay), the light will turn on at 100%. (please note this 30% of brightness is only suitable for bulbs or fixtures with dimming function.)

3H MODE: Turn off the lights during the day, maintain 100% brightness at night, and switch to sensing mode after 3 hours, cycling for 3H every day.

PC MODE: lights off during the day, bright at night. (Equivalent to D2D light sensing lamp application)



SENS SETTING

Adjust the sensing distance, with a minimum adjustment of 20% and a maximum adjustment of 100%.

TIME SETTING

Adjust the sensing delay time (Test -5 seconds -20 minutes)



ORTECH reserves the right to modify at any time, without notice, any or all of our product's features, designs, components and specifications to meet market changes.



SETTING THE MOTION SENSOR

TO ACTIVATE MANUAL MODE

STEP ONE: Motion Sensor Mode: Connect the light fixture to a wall switch. Switch to ON position for Motion Sensor Mode.

STEP TWO: Manual Mode: Quickly toggle switch OFF and then ON within 1-3 seconds, the lamp directly enters the constant light mode.

STEP THREE: Manual Override: Motion sensing can be deactivated with wall switch so light stays on through the night. Motion sensing will automatically reactivate the following night.

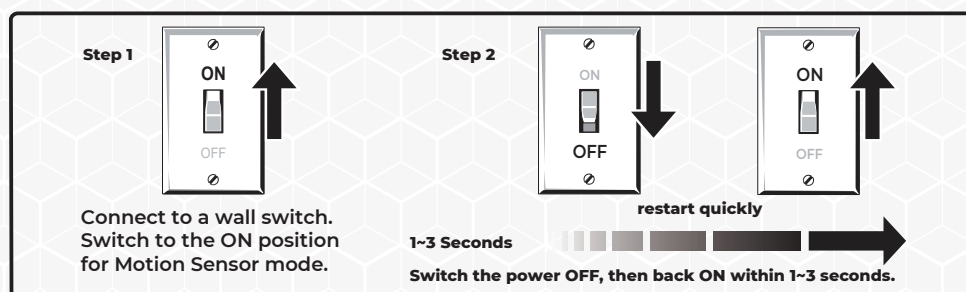
TO RESET AUTOMATIC MODE

STEP ONE: Turn Switch OFF.

STEP TWO: Wait 20 seconds.

STEP THREE: Turn Switch ON.

STEP FOUR: The light will go through a warm-up cycle before resetting back to the Motion Mode.



REFERENCE	QUANTITY	REMARKS	PROJECT DETAILS
			Project:
			Location:
			Architect:
			Engineer:
			Contractor:
			Submitted By:
			Date:

ORTECH reserves the right to modify at any time, without notice, any or all of our product's features, designs, components and specifications to meet market changes.