



Electromagnet Module



Product Manual

| CONTENTS

1

Product introduction

01 Brief introduction

2

About the product

02 Packing list

02 Specification

3

Firmware

03 Firmware version

05 Firmware updating

4

Installation

06 Installing steps

5

Programming

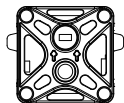
11 Reference case

Product introduction

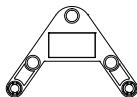
The electromagnet extension is an additional accessory for LiteBee Wing. It can lift and drop the iron materials by its electromagnet. Combined with the drone, the extension also can be programmed to transfer the materials automatically. This extension provides a chance for kids to practice their programming skill and learn how the programming can be applied.

ABOUT THE PRODUCT

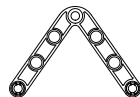
Packing list



Electromagnet unit*1



Counterweight holder*1



Electromagnet holder*1



Long bolt*8



Connecting cable*1



Short bolt*8



Nylon screw*2



Nut*2



Electromagnet*1



QR code for position*15



Adsorbate*20

Specification

Model: Y17-AI

Size: 40*40*8mm

Working voltage/current: 5V/@80mA

Size of QR code: 24*30cm

Max load: 500g

Actual load: 0-8g

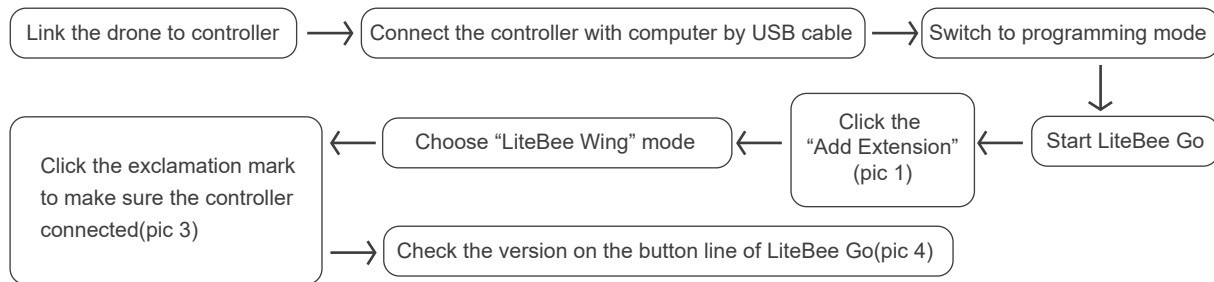
PREPARATION

Firmware version

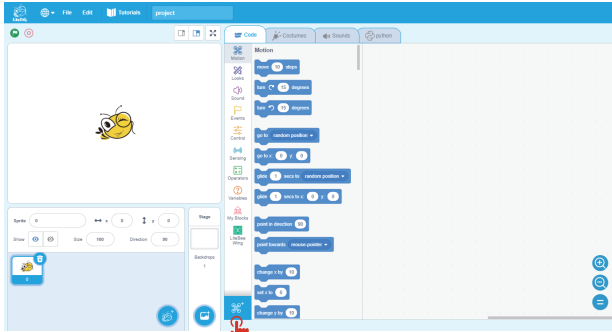
Description

To apply the electromagnet, the firmware version of drone and controller should be V1.1.0 and up, the version of PC software - LiteBee Go should be V0.2.1 and up.

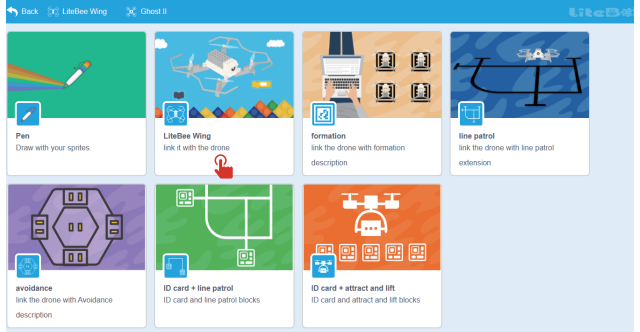
How to check the version



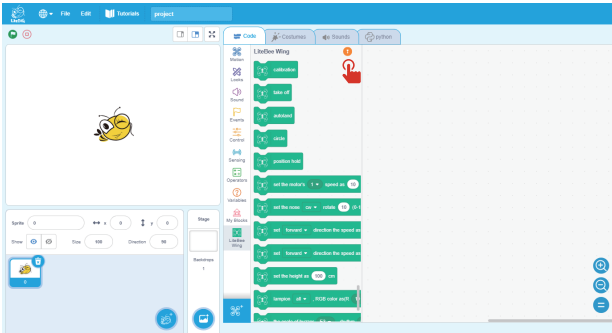
FV shows the version of the aircraft
RV shows the version of the controller



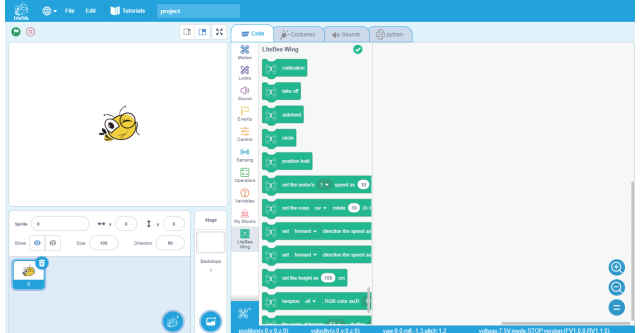
pic 1



pic 2



pic 3



pic 4

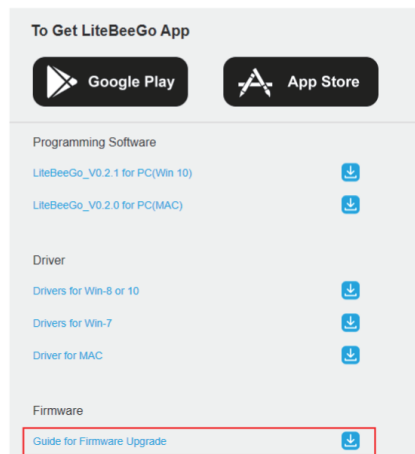
How to update the version

To download the corresponding document for firmware upgrading on LiteBee official web

Or, you can find relevant video for firmware upgrading on YouTube channel - LiteBee, search "Guide for firmware upgrade"

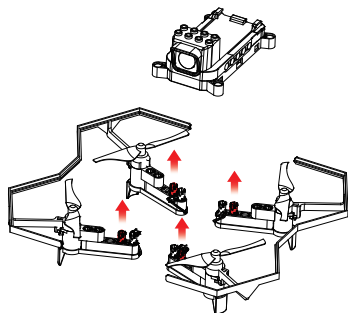
Official Website:<https://www.litebee.com/product/liteBeeWing/download>

DOWNLOAD



INSTALLATION

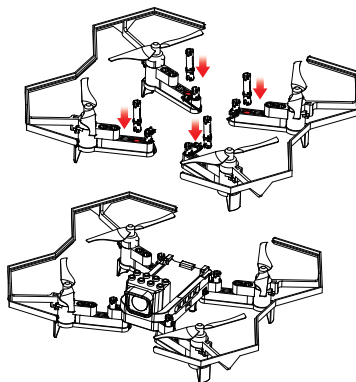
1



- Disassemble these arms of rotor;
- Remove these short bolts.

2

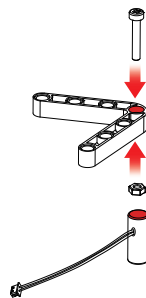
⌵ *4



- Replace them by long bolt;
- And then reassemble it.

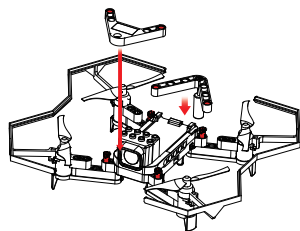
3

⌵ *1 ⌵ *1 * *1 ⌵ *1



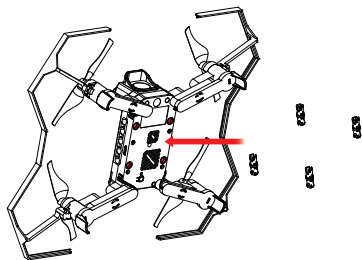
- Fix the electromagnet on the holder with a screw;
- Tighten the screw until it can't twist.

4



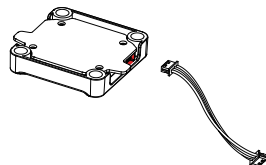
- Fix the counterweight holder on the front;
- Fix the electromagnet on the back.

5



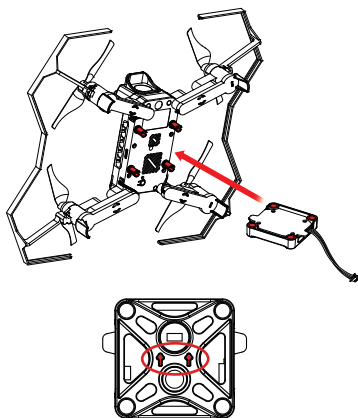
- Insert 4 short bolts into the bottom of the drone.

6



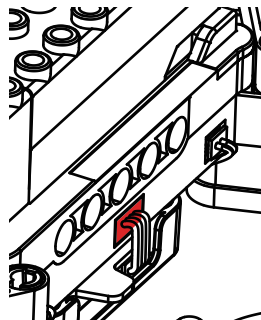
- Insert the connecting cable into the electromagnet unit.

7



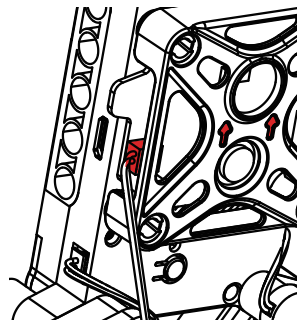
- Install the electromagnet unit on the bottom of the drone;
- Attention: the blank side face to the bottom of the drone.

8



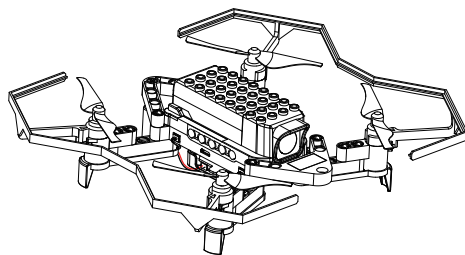
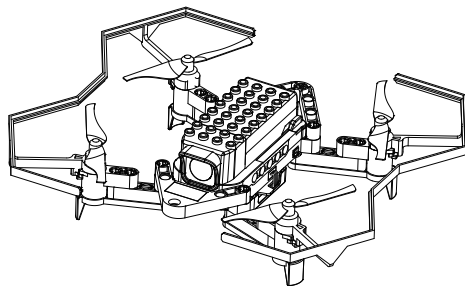
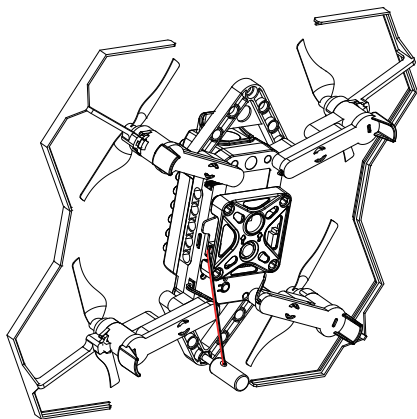
- Insert the cable into the broadside of the drone.

9



- Connect the power line with the electromagnet unit.

Finished



EXTENSION PROGRAMMING

Step 1: Connect the drone with computer

Link the drone with the controller first



Connect the controller with computer by USB cable

Step 2: Electromagnet mode

Start LiteBee Go

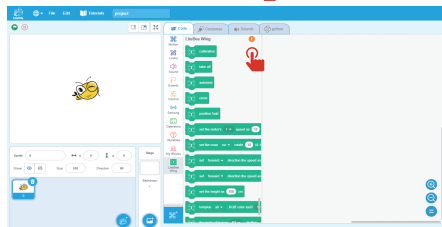
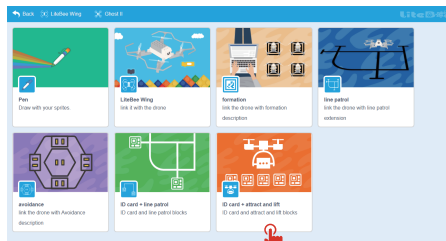
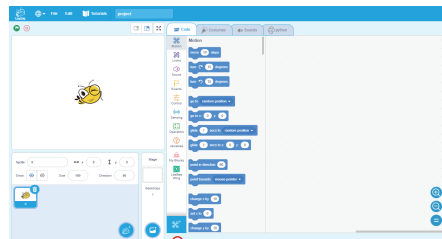


Click "Add extension"



Click "Identification card + attract and lift"

PS: If there is a green tick mark, connected; if a orange exclamation, click the exclamation to connect again.



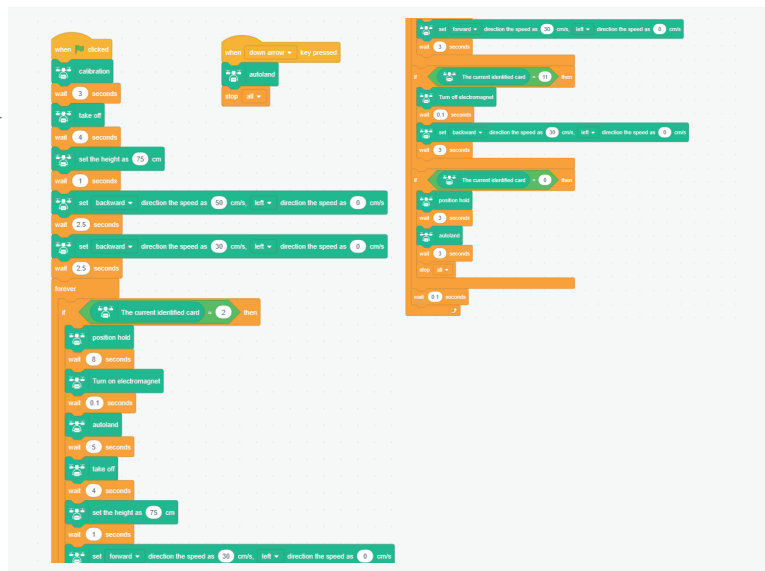
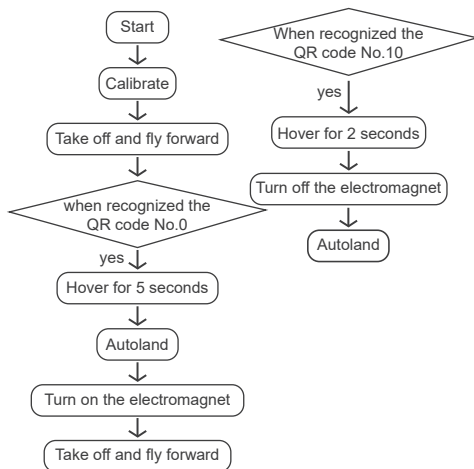
Reference case

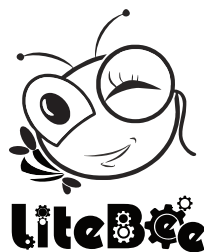
Task

Let the drone fly to the QR code No.0 and hover; then land and turn on the electromagnet and lift the adsorbate; take off again and fly to the QR code No.10; hover and turn off the electromagnet to drop the adsorbate; land.

Case

Mind map





Manufacturer: Shenzhen Makerfire Technology Co., Ltd.

Website: www.litebee.com

Tel: 44-830-2598

Email: sales@litebee.com

Address: 25th Floor, A7 Building, Creative City, Liuxian Ave, Xili Street, Nanshan District, Shenzhen, China.