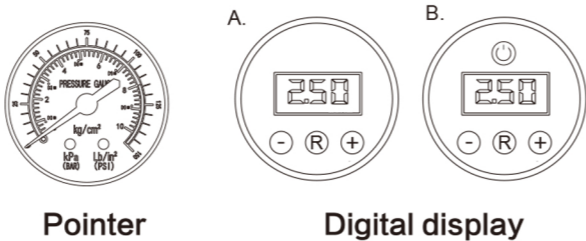


AIR COMPRESSOR

(MANUAL)

AIR COMPRESSOR



Thank you for using this product, the air pump more understand the use of high-quality tires, motor and cylinder, to achieve fast inflation pressure, with more convenient storage, cool robot modelling lets a person find everything fresh and new integration of LED lighting and other functions. Only digital display and pointer table two styles can be selected. Presuppose the tire pressure and bring the user experience of the fuse.



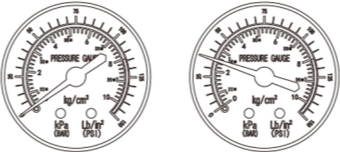
- [Working voltage]: DC12V
- [Inflatable flow]: 35L/min [Power]: 120W
- [Current flow]: ≤10A [Inflatable tube]: 50cm
- [Power mode]: a vehicle's cigarette entry port
- [Power cord length]: 约 300cm
- [working temperature]: -15℃~50℃

Usage

① Use method of digital display table

- A.  The first step: start the car,
The second step: the power supply is inserted into the cigarette holder.
The third step: the inflatable port is connected to the tire air nozzle,
The fourth step: press the " R " button, digital display table adjustment unit is Kg/cm,
The fifth step: adjust the presupposition pressure according to pressure and decompression button (recommended 2.3Kg/cm in summer, 2.5Kg/cm in winter).
The sixth step: press the gas pump switch " ⏻ " , fill the set value and automatically fill and stop.
- B. 

② Use method of Pointer table



- First step: start the car
Second step: plugged into the smoke device mouth
Third step: the inflatable port is connected to the tire air nozzle
Fourth step: press the gas pump switch to begin to inflate
Fifth step: when inflating, the pointer meter will rise with the increase of air pressure, the general car
Fetal pressure is 28-35PSI (2.0KG/cm -2.5KG/cm)
Sixth step: turn off the gas pump, take out the gas nozzle and the power plug, the charge is completed.

Warning

1. this machine does not apply to large and ultra large vehicle tires, such as trucks, large trucks and so on.
2. in use, the car engine should be launched to enhance the power and not to lose the electric power of the car's battery.
3. the use of DC (DC12,10A) power supply, Don't use of 220V home power, if you want to use the transformer.
4. when the car tire is inflated, it is best to rest every 10 minutes, so that the body can be cooled slightly after it is used, and the service life can be extended.
5. general car tires are inflated, and the normal tire pressure of 220KPA can be reached in about 5-8 minutes. Tire is a little longer, such as start when inflated, the instrument pointer increased rapidly in about two or three seconds to reach 490KPA, which means the air is blocked), the air does not enter the tire, you must immediately turn off the power, unplug the gas nozzle operation again, otherwise the pump motor will be damaged.
6. when use, people do not leave the body, at any time pay attention to the pressure of the fetus, can not be inflatable too saturated.
7. after the air nozzle is used, the wrench must be straightened so as to avoid the elastic fatigue of the rubber.
8. car smoke device if not clean and not conductive, or burn the fuse, the machine can not run, so it is necessary to ensure that the smoke device is conductive, the fuse does not burn.
9. the machine should avoid humid, heavy fall and mud invasion, and should avoid playing with children so as not to be damaged.