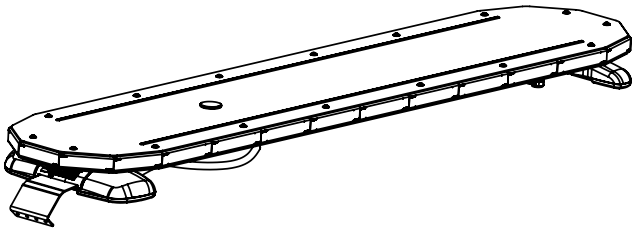




## LED Exterior Lightbar



**IMPORTANT NOTICE TO INSTALLER:** Make sure to read and understand all instructions and warnings before proceeding with the installation of this product. Ensure that the manual and any warning cards are delivered to the end user of this equipment. Proper installation of the lightbar requires the installer to have a thorough knowledge of automotive electronics, systems, and procedures. Lightbars provide an essential function of an effective visual warning system. The use of the lightbar does not insure that all drivers can or will abide by or react to an emergency warning signal, especially at high rates of speeds or long distances. The operator of the vehicle must never take the right of way for granted and it is the operator's responsibility to proceed safely. The effectiveness of the lightbar is highly dependant on the correct mounting and wiring. The installer must read and follow the manufacturer's installation instructions and warnings in the manual. The vehicle operator should verify daily that the lightbar is securely fastened to the vehicle and properly functioning before operating vehicle. The lightbar is intended for use by authorized personnel only. It is the user's responsibility to ensure they understand and operate the emergency warning devices in compliance with the applicable city, state and federal laws and regulations. SoundOff Signal assumes no liability for any loss resulting from the use of this warning device.

### Components/Contents

Standard Equipment:

- 1 - mpower LED Exterior Lightbar built to your specifications
- 1 - Breakout Box
- 1 - 24 Pin Harness

Other Parts that may be included depending on your configuration:

- 1 - Vehicle Specific Hook Kit w/ Hardware\*
- 2 - Fixed Height Mounting Brackets w/ Hardware or
- 1 - Flat Mount Hardware Kit or
- 2 - Headache Brackets w/ Hardware

\*Kits will vary with each lightbar depending on vehicle specified on order form.

### Unpack Lightbar

1. Remove the lightbar from box and packaging.
2. Save packaging for later shipping.
3. Check components/contents.
4. Please reference these instructions for proper wiring and installation.

### Tools Required for Installation

- 7/16" Socket with ratchet
- Phillips Head Screwdriver
- Drill bit #30
- 5/32 Hex Drive or Allen Wrench



1.800.338.7337 / [www.soundoffsignal.com](http://www.soundoffsignal.com)

### NOTICE:

Installers and users must comply with all applicable federal, state and local laws regarding use and installation of warning devices.

*Improper use or installation may void warranty coverage.*

To review our Limited Warranty Statement & Return Policy for this or any SoundOff Signal product, visit our website at [www.soundoffsignal.com/tech-services/returns/](http://www.soundoffsignal.com/tech-services/returns/).

If you have questions regarding this product, contact **Technical Services**, Monday - Friday, 8 a.m. to 5 p.m. ET at 1.800.338.7337 (press #4).


Questions or comments that do not require immediate attention may be emailed to [techservices@soundoffsignal.com](mailto:techservices@soundoffsignal.com).

ENHANCING SAFETY THROUGH INNOVATION

## TABLE OF CONTENTS

PAGE	CONTENT
1	COMPONENTS/ CONTENTS
2	MODULE SPECIFICATIONS & TECHNICAL/ POWER SPECIFICATIONS
3	LIGHTBAR VIEWS
4-5	FIXED HEIGHT BRACKETS AND HOOK MOUNTING
6	WIND DEFLECTOR INSTALLATION
7-14	ELECTRICAL INSTALLATION
15,16	PHOTO SENSOR
17,18	SETTING MODULE IDs
19	CONTROL HARNESS
20	LIGHT MODULE LOCATIONS
21	LIGHT MODULE WIRE HARNESS LOCATIONS
22	MODULE REPLACEMENT/ SETTING MODULE ID's
23	MPOWER TROUBLESHOOTING
24	CONNECTION OF BREAKOUT BOX TO SOUNDOFF SIGNAL SIRENS
25	REPLACEMENT PARTS
26	WARRANTY AND RETURN GOODS PROCEDURE

### Important Information:

- To view the full Software Revision History click the  in the upper right hand corner of the Lightbar Software application.
- Warning devices are strictly regulated and governed by Federal, State and Municipal ordinances. These devices shall be used ONLY on approved vehicles. It is the sole responsibility of the user of these devices to ensure compliance.
- DO NOT install this product or route any wires in the Air Bag Deployment Zone. Refer to your vehicle Owner's Manual for the location of any air bag deployment zones.
- DO NOT connect this device to a strobe power supply. This product is self-contained and does not require an external power supply.

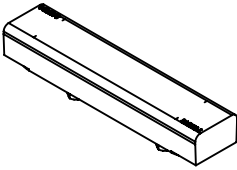
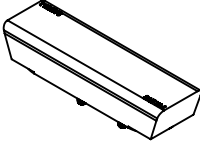


### WARNING

This product contains high intensity LED devices. To prevent eye damage, DO NOT stare into the light beam at close range.



## LED Exterior Lightbar

	<b>6": 6 &amp; 8 LED Single Color, 12 LED Dual &amp; 18 LED Tri Color Inboard Module</b> INPUT VOLTAGE RANGE: 10-16Vdc CURRENT DRAW: 0.36 Amps @ 12.8 Vdc (Flashing Red) 0.62 Amps @ 12.8 Vdc (Peak Red) 0.60 Amps @ 12.8 Vdc (Flashing Amb, Blue, Green, White) 0.90 Amps @ 12.8 Vdc (Peak Amb, Blue, Green, White) WATTAGE: 4.6W (Red) 7.7W (Amb, Blue, Green, White)
	<b>3": 4 LED Single Color, 8 LED Single Color, 8 LED Dual Color, 12 LED Tri Color</b> INPUT VOLTAGE RANGE: 10-16Vdc CURRENT DRAW: 0.26A mps @ 12.8 Vdc (Flashing Red) 0.62 Amps @ 12.8 Vdc (Peak Red) 0.38Amps @ 12.8 Vdc (Flashing Amb, Blue, Green, White) 0.90 Amps @ 12.8 Vdc (Peak Amb, Blue, Green, White) WATTAGE: 3.3W (Red) 4.9W (Amb, Blue, Green, White)

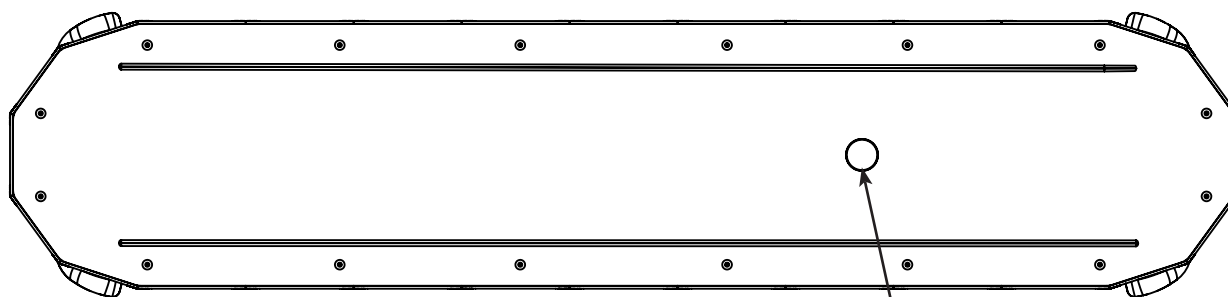
FLASHING = AVERAGE  
STEADY ON (100%) = PEAK

TECHNICAL SPECIFICATIONS			
Material:	Top Cover: Aluminum LED Modules: Dow Corning Silicone		
Roof Attachments:	1/4" bolt Stainless A2		
Operating Temperature:	-40° to +65° C		
LENGTH	DEPTH	HEIGHT	# OF INBOARDS
42"	10.6"	1.1"	10
48"	10.6"	1.1"	12
55"	10.6"	1.1"	14

POWER SPECIFICATIONS				
Input Voltage Range:	10 -16 Vdc			
Light Bar Component	Current Draw (Average = Flashing)		Power Consumption (Watts)	
Standby Current	Ignition ON	Ignition OFF	Ignition ON	Ignition OFF
	0.200 Amps	<8.5 mA	2.560 Watts	0.108 Watts
Reverse Polarity	Protected			
Load Dump	Protected			
Wiring	Power Cable 15ft, 10 AWG Wires, (+) Red, (-) Black Data Cable 16AWG Green			

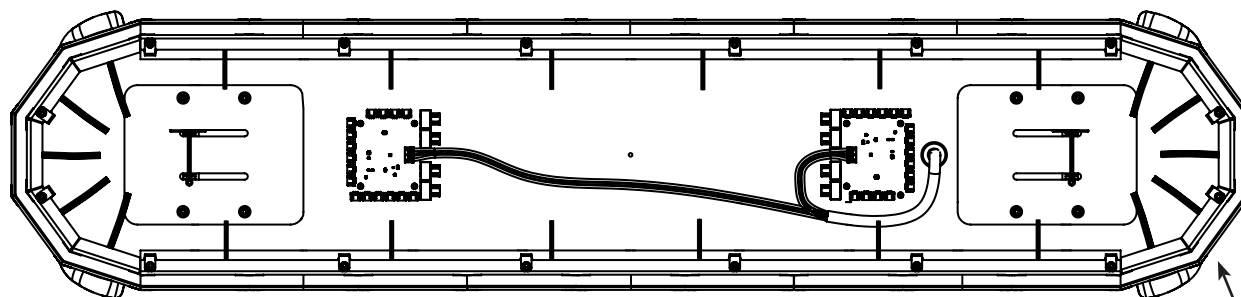


## LED Exterior Lightbar



**TOP VIEW WITH COVER ON**

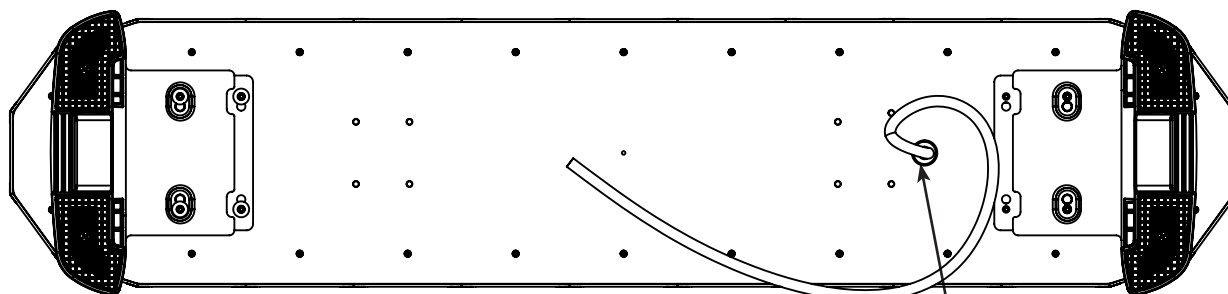
AUTO DIM LENS



INBOARD MODULES

CORNER MODULES

**TOP VIEW WITH COVER OFF\***



**BOTTOM VIEW**

WIRE EXIT

\*48" lightbar pictured

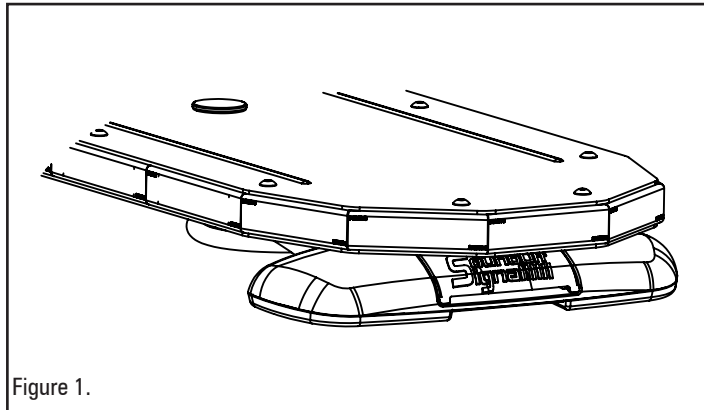


Figure 1.

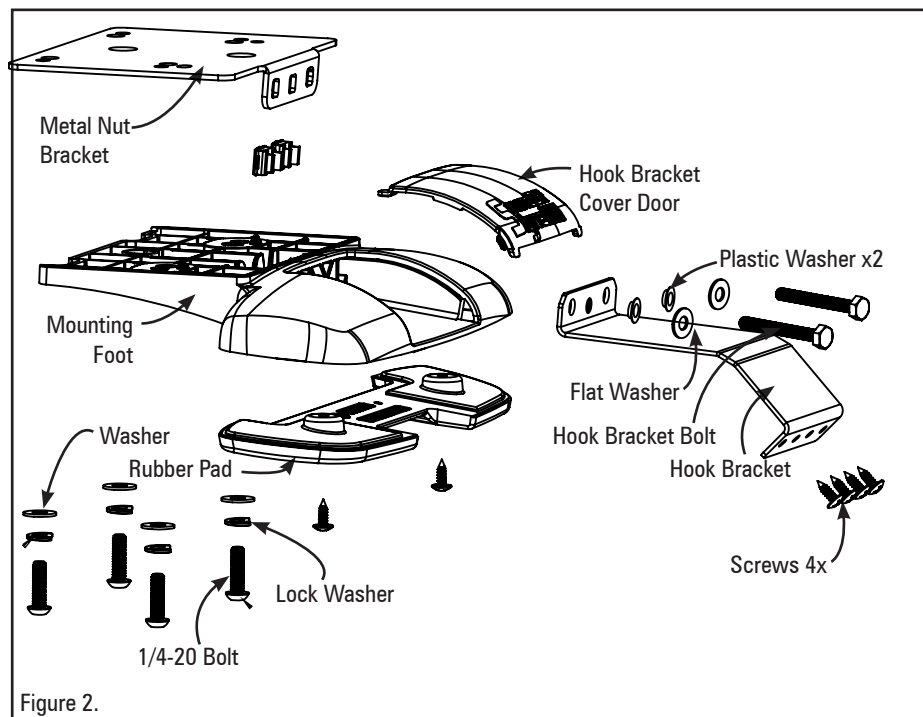


Figure 2.

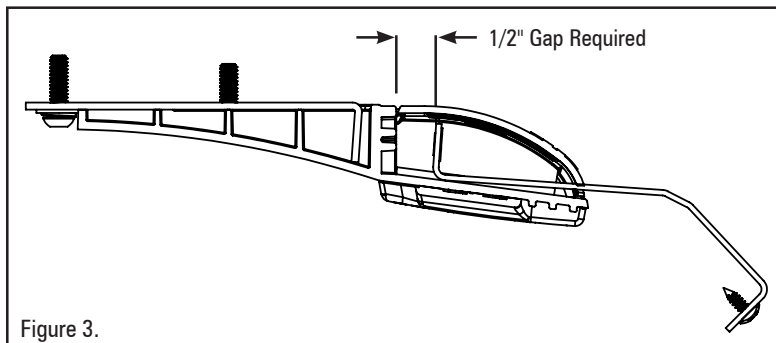


Figure 3.

### **WARNING**

Route wires only in locations that are not subjected to potential wear. Make sure to avoid routing wires in the deployment area of your air bag. Refer to your vehicle's owner's manual for airbag deployment zone.

## FIXED HEIGHT BRACKETS AND HOOK MOUNTING (PURSUIT)

1. Attach the supplied screws to the mounting foot to secure the rubber pad as shown in Figure 2. Be sure the torque does not exceed 10 IN-LBF.

2. Insert the 2 plastic washers inside holes of the provided hook brackets.

3. Keeping the lightbar level with the road, attach Mounting Feet to the roof of the vehicle using the 4 supplied bolts. If the lightbar needs to be leveled, a 1.5° wedge can be used (PNFLBWGKT1).

4. Place lightbar centered on the roof, and hold brackets up to the lightbar. A 1/4" to 1/2" gap should be between the hook bracket and front wall of the mounting foot prior to putting any tension on the hook bracket bolt (See Figure 3). Adjust the mounting foot position to accommodate for this gap.

5. Tighten 4 1/4-20 bolts with lock washers to secure the mounting foot to light bar with a max torque between 30-45 inch/lbs with 5/32 hex driver or allen wrench. **DO NOT OVERTIGHTEN!**

6. Using the holes in the hook bracket as a template, drill 4 holes in the roof using the appropriate size drill. Secure hook bracket to roof with 4 screws on each side.

7. Tighten the hook bracket bolts, torque details below:

Due to different vehicle construction and mounting locations, the torque levels for connecting hooks to the lightbar foot may be different based on the vehicle.

A. Minimum requirement for torque should be 10 IN/LB, with a maximum level of 45 IN/LB.\*

B. When installing the bolts connecting the hook to the lightbar foot, monitor both the lightbar and roof of the vehicle.

C. Tighten to ensure there is no movement of the lightbar or foot by ensuring there is no movement either side to side, or front to rear after the torque has been done.

The lightbar must be securely mounted to the vehicle for safe operation.

\*Deflection of the lightbar and/or the roof of the vehicle may occur when torqueing the bolts connecting the hook to the lightbar foot. Any deflection should be kept at a minimum to avoid damage to the lightbar or vehicle.

**NOTE: As always, it is recommended to check the integrity of mounted lightbars on a daily basis to ensure secure attachment to the vehicle for continued safe operation.**

8. Insert the retainer plates over the 2 bolts on each of the hook kit brackets. Screw in the retainer plate to the hook kit bracket using the 8-32 bolts.

9. Install the cover door over the hook bracket bolt to finish the assembly. Place tab of one side into place and then push the second tab into place with a flathead screw driver.

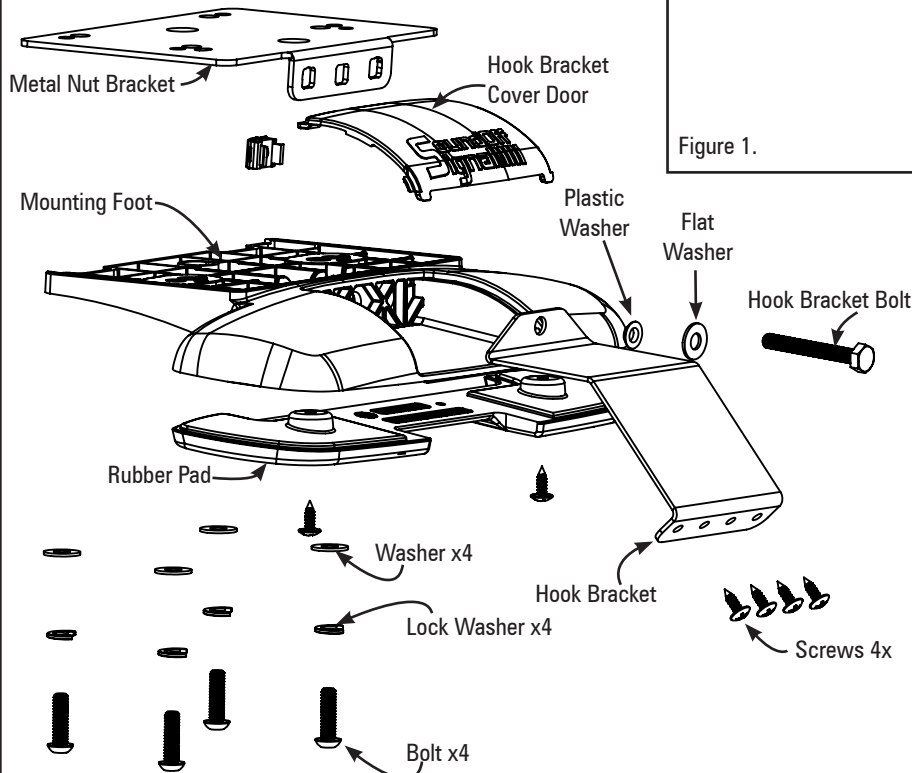


Figure 2.

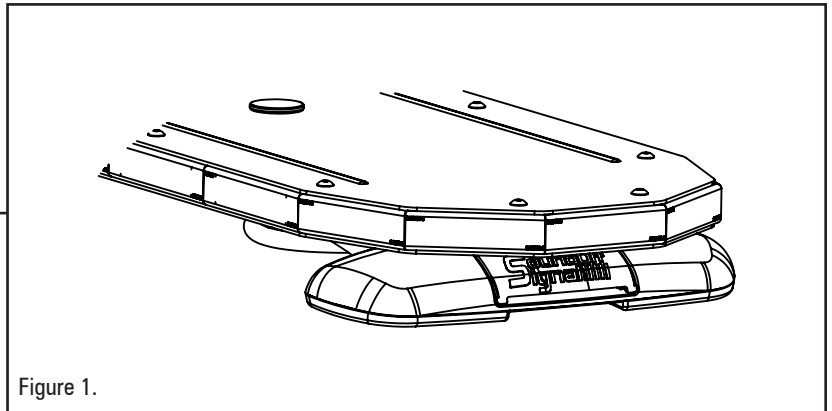


Figure 1.

### FIXED HEIGHT BRACKETS AND HOOK MOUNTING (NON-PURSUIT)

1. Attach the supplied screws to the mounting foot to secure the rubber pad as shown in Figure 3. Be sure the torque does not exceed 10 IN-LBF.

2. Insert the 1 plastic washer inside holes of the provided hook brackets.

3. Keeping the lightbar level to the road, attach mounting feet to the roof of the vehicle using the 4 supplied bolts.

4. Place lightbar centered on the roof, and hold brackets up to the lightbar. A 1/4" to 1/2" gap should be between the hook bracket and front wall of the mounting foot prior to putting any tension on the hook bracket bolt (See Figure 3). Adjust the mounting foot position to accommodate for this gap.

5. Tighten 4 1/4-20 bolts with lock washers to secure the mounting foot to light bar with a max torque between 30-45 inch/lbs with 5/32 hex driver or allen wrench. **DO NOT OVERTIGHTEN!**

6. Using the holes in the hook bracket as a template, drill 4 holes in the roof using the appropriate size drill. Secure hook bracket to roof with 4 screws on each side.

7. Due to different vehicle construction and mounting locations, the torque levels for connecting hooks to the lightbar foot may be different based on the vehicle. Minimum requirement for torque should be 10 IN/LB, with a maximum level of 45 IN/LB. Deflection of the lightbar and/or the roof of the vehicle may occur when torquing the bolts connecting the hook to the lightbar foot. When installing the bolts connecting the hook to the lightbar foot, monitor both the lightbar and roof of the vehicle. Any deflection should be kept at a minimum to avoid damage to the lightbar or vehicle. Tighten to ensure there is no movement of the lightbar or foot by ensuring there is no movement either side to side, or front to rear after the torque has been done. The lightbar must be securely mounted to the vehicle for safe operation. As always, it is recommended to check the integrity of mounted lightbars on a daily basis to ensure secure attachment to the vehicle for continued safe operation.

8. Install the cover door over the hook bracket bolt to finish the assembly. Place tab of one side into place and then push the second tab into place with a flat-head screw driver.

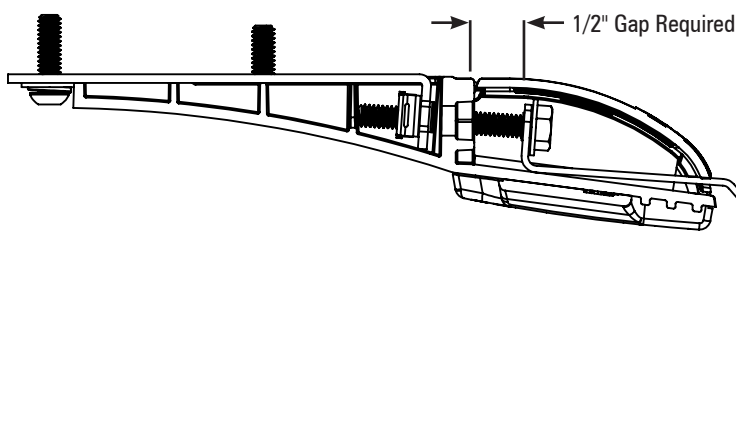
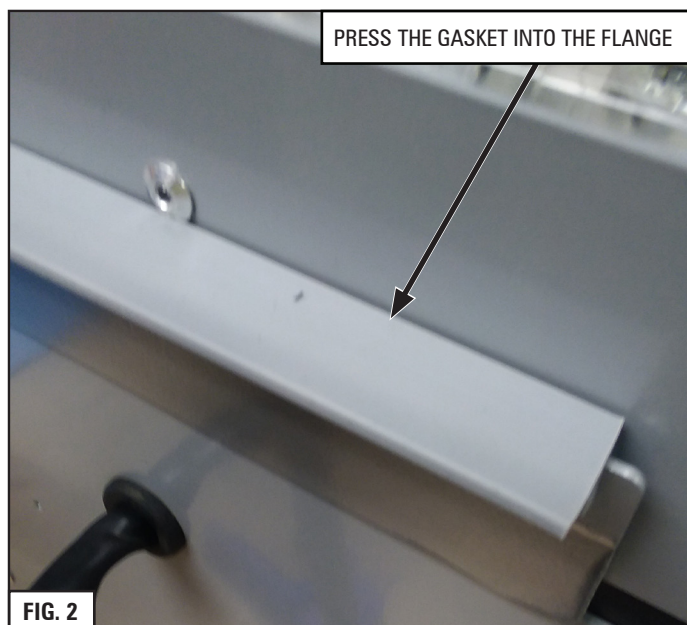
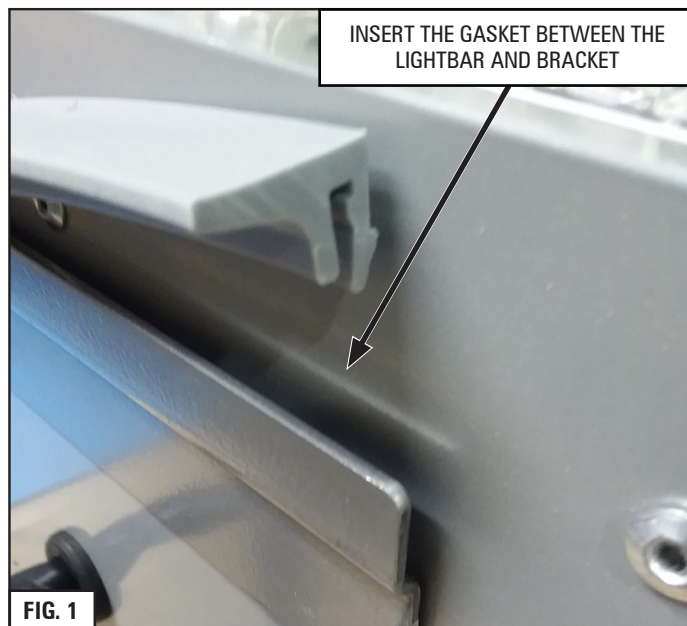


Figure 3.

### ⚠ WARNING

Route wires only in locations that are not subjected to potential wear. Make sure to avoid routing wires in the deployment area of your air bag. Refer to your vehicle's owner's manual for airbag deployment zone.





### WIND DEFLECTOR INSTALLATION

1. Insert the gasket between the lightbar and bracket, as shown in Fig 1. The gasket must be pressed into the flange, as shown in Fig. 2. The fit will be tight.
2. The Wind Deflector may be tight to the vehicle's roof, as shown in Fig. 3.

**NOTE: IF YOU CHOSE A FORD F-SERIES TRUCK, A WIND DEFLECTOR BRACKET WAS ATTACHED TO YOUR LIGHTBAR. THE HARDWARE KIT CONTAINS THE GASKET NEEDED.**

**\*\*A WIND DEFLECTOR IS NOT REQUIRED FOR OTHER VEHICLES.**



## LED Exterior Lightbar

# ELECTRICAL INSTALLATION

### Featured Highlights & Terminology:

**Mode Select:** The mpower Exterior Lightbar is equipped with 4 selectable pattern configuration modes. The default input wire configuration allows for 2 modes and an additional 2 modes may be configured with the PC Application using any available input wires. Default is Mode 1 where the Mode select input is floating. Mode 2 is in use when the input activated. This feature allows up to 4 completely different sets of patterns to be programmed into the Light-bar's non-volatile memory. Once programming configuration is complete, the Mode can be changed "on-the-fly" by an activation switch which applies voltage to the Mode input wire(s).

**Cruise Mode:** Allows the user to program any light group(s) to "Glow" when this feature is activated. The LED intensity is selectable between 1 and 10% duty cycle. For dual / tri color bars, the color for each light group is selectable.

**Takedown Mode:** Allows the user to program any Light Head Group(s) to turn on steady when this feature is activated to provide steady ON takedown lighting.

**Directional Arrow Built-in:** The directional controller is built-in with 11 arrow patterns for each of the 3 modes (left arrow, right arrow, and center out arrow) and the color is selectable for dual / tri color bars

**Steady On Mode:** Accessible with PC App only and allows the user to program any light module to turn on steady at 100% duty cycle.

**Stop / Tail / Turn Mode:** Allows the user to program any Light Head Group(s) to operate in 2 levels of intensity for tail and stop/turn functions.

**Low Power Mode:** Operates lighting at reduced intensity. Selectable between 20 and 90% duty cycle.

**Scene Lighting Mode:** Allows the user to program any Light Head Group(s) to turn on steady when this feature is activated to provide additional scene lighting. The activation of this input also activates the Takedown function

**Speed Sense Input:** The breakout box has a speed sense input that is capable of sensing vehicle speed when connected to the Vehicle Speed Sense (VSS) trigger wire which is supplied in the police upfitter wire harness for some vehicles. This feature is configured using the PC configuration software utility.

**Auto Dimming:** Operates lightbar at reduced intensity when ambient light is low.

**Matrix Input:** Matrix inputs are virtual inputs which can be triggered based on combinations of up to four physical wires or siren input signals. This feature also allows the installer to invert the state of inputs, latch momentary inputs and adjust trigger timing through on and off delay timer settings. This feature is configured using the PC configuration software utility.

### Power Cable:

1. Route lightbar power cables as close to vehicles power source (battery) as possible.
2. Install a maximum of 30 Amp Fuse (customer supplied) to the end of the RED wire of the Lightbar Power Cable.
  - a. Remove the fuse before connecting any wires to the POSITIVE (+) terminal of the battery.
3. DO NOT USE CIRCUIT BREAKER OR FUSIBLE LINK.
  - a. Do NOT use any more than 2ft of wire between the power source and the fuse and ensure the wire is protected and secured from being cut into; this is non-fused wire.
4. Connect the BLACK wire to the factory chassis ground right next to the battery or other ground location capable of handling high current.

### Control (Data) Cable:

1. Route Lightbar Control Cable to the location where all controlling equipment will be, i.e. switch box, center console area.
2. Locate the Breakout Box in the same area to connect jumpers from the switching equipment to the breakout box.
3. Refer to breakout box hookup table on page 9.

### Ignition Wire:

1. Connect the Pink/White wire to a switched power source.

### Initial Power up Test: Breakout Box needs Power (+12V to PIN 17) & Ground (PIN 4) in order to operate:

1. Insert Fuse(s) into Fuse Holder(s).
2. Observe the GREEN Data Link indicator LED on the Breakout Box; the LED will turn ON.
3. The Red indicator LED on the breakout box will be steady ON whenever any of the input wires are active

### Low Power (Standby) Mode (reduced standby current)

If there is no input to the breakout box the lightbar will go into a "standby" mode. The standby mode is a low power mode that is used to extend the life of your battery. The lightbar will awaken from the standby mode when the ignition input is activated on the breakout box.

## ELECTRICAL INSTALLATION (CONTINUED)

### Warning Flash Pattern Configuration:

- Set Switch #2 on Breakout box to down position (Switch #1 must be in Up position)
- Apply voltage to the activation wire of the function which requires pattern to be changed (i.e. Warning, Arrow etc.)
- Apply voltage to the Mode activation wire to configure mode 2 flash patterns, leave Mode activation wire floating to configure mode 1 flash patterns
- Momentarily apply voltage to the pattern select wire to change the warning flash pattern
- Set Switch #2 on Breakout box to up position to save settings and return light-bar to normal operating mode

### FLASH PATTERNS

\*fpm=Flashes per Minute

\*\*fps=Flashes per Second

#	Name	SAE Compliant Timing	ECE Compliant Timing	California Title 13 Compliant Timing	Color	Sequence	fpm	fps
SC1	Random 1	Yes	No	No	#1	Variable	-	-
SN2	Random 2	No	No	No	#1	Variable	-	-
SC3	Quint	Yes	No	No	#1	Alternating	70	1.2
SC4	Quad 2	Yes	No	No	#1	Variable	-	-
SC5	Q-Switch	Yes	No	No	#1	Variable	-	-
SC6	Double	Yes	No	No	#1	Alternating	115	1.9
SC7	Power Pulse	Yes	No	No	#1	Alternating	180	3
SC8	Road Runner	Yes	No	Yes	#1	Alternating	115	1.9
SC9	Slow Runner	Yes	No	Yes	#1	Alternating	70	1.2
SN10	Warp	No	No	No	#1	Alternating	350	5.8
SN11	Inter-Cycle	No	No	No	#1	Alternating	-	-
SN12	Warp 1-2-3	No	No	No	#1	Alternating	-	-
SC13	E-Single	Yes	Yes	No	#1	Alternating	125	2.1
SC14	E-Double	Yes	Yes	No	#1	Alternating	125	2.1
SC15	E-Triple	Yes	Yes	No	#1	Alternating	125	2.1
SC16	E-Single Sim	Yes	Yes	No	#1	Simultaneous	125	2.1
SC17	E-Double Sim	Yes	Yes	No	#1	Simultaneous	125	2.1
SN18	Super Slow Runner	No	No	No	#1	Alternating	55	0.9
SC19	Quint Simultaneous	Yes	No	No	#1	Simultaneous	70	1.2
SC20	Road Runner Simultaneous	Yes	No	No	#1	Simultaneous	114	1.9
SC21	Quint Pass/Steady Driver	Yes	No	No	#1	-	70	1.2
SC22	Road Runner Pass/Steady Driver	Yes	No	No	#1	-	114	1.9
SC23	Quint 2	Yes	No	No	#1	-	70	1.2
SN24	Warp 2	No	No	No	#1	-	350	5.8
SN25	Inter-Cycle 2	No	No	No	#1	-	-	-
SN26	Flicker Brake	No	No	No	#1	-	-	-
SN27	Flicker Cruise	No	No	No	#1	-	-	-
SN28	Steady	No	No	No	#1	-	-	-
SN29	Manifesto	No	No	No	#1	-	-	-
SN30	Power Evert	No	No	No	#1	-	-	-
SN31	Dazzle	No	No	No	#1	-	-	-
SN32	Quiver	No	No	No	#1	-	-	-

**NOTE:** Takedown light patterns are limited to pattern #1 – 25



## FLASH PATTERNS (CONTINUED)

#	Name	SAE Compliant Timing	ECE Compliant Timing	California Title 13 Compliant Timing	Color	Sequence	fpm	fps
SN33	Power Sway	No	No	No	#1	-	-	-
SN34	Evert	No	No	No	#1	-	-	-
SN35	Alternating Rapid Flash	No	No	No	#1	-	-	-
SN36	Swift Impact	No	No	No	#1	-	-	-
SN37	Tango	No	No	No	#1	-	-	-
SN38	Tremble	No	No	No	#1	-	-	-
SN39	Shake	No	No	No	#1	-	-	-
SN40	Evolver	No	No	No	#1	Simultaneous	-	-
SN41	Corner Sweep	No	No	No	#1	-	-	-
SN42	Corner Sweep Slow	No	No	No	#1	-	-	-
SN43	Full/Sweep	No	No	No	#1	-	-	-
SN44	Full/Sweep Slow	No	No	No	#1	-	-	-
SN45	Center Sweep	No	No	No	#1	-	-	-
SN46	Center Sweep Slow	No	No	No	#1	-	-	-
SN47	Orbit	No	No	No	#1	-	-	-
SN48	Orbit Slow	No	No	No	#1	-	-	-
SN49	Double Orbit	No	No	No	#1	-	-	-
SN50	Slow Double Orbit	No	No	No	#1	-	-	-
SN51	Retrograde Orbit	No	No	No	#1	-	-	-
SN52	Slow Retrograde Orbit	No	No	No	#1	-	-	-
SN53	Progressive Alternate	No	No	No	#1	-	-	-
SN54	Recurrent	No	No	No	#1	Simultaneous	-	-
DC1	Random Dual #1	Yes	No	No	#1/2	Variable	-	-
DN2	Random Dual #2	No	No	No	#1/2	Variable	-	-
DC3	Quint Dual	Yes	No	No	#1/2	Alternating	70	1.2
DC4	Quad 2 Dual	Yes	No	No	#1/2	Variable	-	-
DC5	Q-Switch Dual	Yes	No	No	#1/2	Variable	-	-
DC6	Double Dual	Yes	No	No	#1/2	Alternating	115	1.9
DC7	Power Pulse Dual	Yes	No	No	#1/2	Alternating	180	3
DC8	Road Runner Dual	Yes	No	Yes	#1/2	Alternating	115	1.9
DC9	Slow Runner Dual	Yes	No	Yes	#1/2	Alternating	70	1.2
DN10	Warp Dual	No	No	No	#1/2	Alternating	350	5.8
DN11	Inter-Cycle Dual	No	No	No	#1/2	Alternating	-	-
DN12	Warp 1-2-3 Dual	No	No	No	#1/2	Alternating	-	-
DN13	Pattern #1 Dual	No	No	No	#1/2	Variable	-	-
DN14	Pattern #2 Dual	No	No	No	#1/2	Variable	-	-
DN15	Impact Dual	No	No	No	#1/2	Variable	-	-
DN16	Explosion Dual	No	No	No	#1/2	Variable	-	-
DC17	Quint Simultaneous Dual	Yes	No	No	#1/2	Simultaneous	70	1.2

## FLASH PATTERNS (CONTINUED)

#	Name	SAE Compliant Timing	ECE Compliant Timing	California Title 13 Compliant Timing	Color	Sequence	fpm	fps
DC18	Road Runner Sim. Dual	Yes	No	No	#1/2	Simultaneous	114	1.9
DC19	Quint 2 Dual	Yes	No	No	#1/2	-	70	1.2
DN20	Warp 2 Dual	No	No	No	#1/2	-	350	5.8
DN21	Inter-Cycle 2 Dual	No	No	No	#1/2	-	-	-
DN22	Super Slow Runner Dual	No	No	No	#1/2	-	-	-
DN23	Flicker Cruise Dual	No	No	No	#1/2	-	-	-
DN24	Manifesto Dual	No	No	No	#1/2	-	-	-
DN25	Power Evert Dual	No	No	No	#1/2	-	-	-
DN26	Dazzle Dual	No	No	No	#1/2	-	-	-
DN27	Quiver Dual	No	No	No	#1/2	-	-	-
DN28	Power Sway Dual	No	No	No	#1/2	-	-	-
DN29	Evert Dual	No	No	No	#1/2	-	-	-
DN30	Alternating Rapid Flash Dual	No	No	No	#1/2	-	-	-
DN31	Swift Impact Dual	No	No	No	#1/2	-	-	-
DN32	Tango Dual	No	No	No	#1/2	-	-	-
DN33	Tremble Dual	No	No	No	#1/2	-	-	-
DN34	Shake Dual	No	No	No	#1/2	-	-	-
DN35	Evolver Dual	No	No	No	#1/2	Simultaneous	-	-
DN36	Corner Sweep Dual	No	No	No	#1/2	-	-	-
DN37	Corner Sweep Slow Dual	No	No	No	#1/2	-	-	-
DN38	Full/Sweep Dual	No	No	No	#1/2	-	-	-
DN39	Full/Sweep Slow Dual	No	No	No	#1/2	-	-	-
DN40	Center Sweep Dual	No	No	No	#1/2	-	-	-
DN41	Center Sweep Slow Dual	No	No	No	#1/2	-	-	-
DN42	Orbit Dual	No	No	No	#1/2	-	-	-
DN43	Orbit Slow Dual	No	No	No	#1/2	-	-	-
DN44	Double Orbit Dual	No	No	No	#1/2	-	-	-
DN45	Slow Double Orbit Dual	No	No	No	#1/2	-	-	-
DN46	Retrograde Orbit Dual	No	No	No	#1/2	-	-	-
DN47	Slow Retrograde Orbit Dual	No	No	No	#1/2	-	-	-
DN48	Progressive Alternate Dual	No	No	No	#1/2	-	-	-
DN49	Recurrent Dual		No	No	#1/2	Simultaneous	-	-
TN1	Pattern 1 Tri	No	No	No	#1/2/3	Alternating	-	-
TN2	Random Tri	No	No	No	#1/2/3	Alternating	-	-
TC3	Quint Tri	Yes	No	No	#1/2/3	Alternating	70	1.2
TC4	Quad 2 Tri	Yes	No	No	#1/2/3	Alternating	-	-
TN5	Pattern 2 Tri	No	No	No	#1/2/3	-	-	-
TC6	Double Tri	Yes	No	No	#1/2/3	Alternating	115	1.9
TC7	Power Pulse Tri	Yes	No	No	#1/2/3	Alternating	180	3



LED Exterior Lightbar

### FLASH PATTERNS (CONTINUED)

#	Name	SAE Compliant Timing	ECE Compliant Timing	California Title 13 Compliant Timing	Color	Sequence	fpm	fps
TC8	Road Runner Tri	Yes	No	Yes	#1/2/3	Alternating	115	1.9
TC9	Slow Runner Tri	Yes	No	Yes	#1/2/3	Alternating	70	1.2
TN10	Warp Tri	No	No	No	#1/2/3	Alternating	350	5.8
TN11	Inter-Cycle Tri	No	No	No	#1/2/3	Alternating	-	-
TN12	Warp 1-2-3 Tri	No	No	No	#1/2/3	Alternating	-	-
TN13	Super Slow Runner Tri	No	No	No	#1/2/3	Alternating	55	0.9
TC14	Quint Simultaneous Tri	Yes	No	No	#1/2/3	Simultaneous	70	1.2
TC15	Road Runner Sim. Tri	Yes	No	No	#1/2/3	Simultaneous	114	1.9
TC16	Quint 2 Tri	Yes	No	No	#1/2/3	Alternating	70	1.2
TN17	Warp 2 Tri	No	No	No	#1/2/3	Alternating	350	5.8
TN18	Inter-Cycle 2 Tri	No	No	No	#1/2/3	Alternating	-	-
TN19	Pattern 3 Tri	No	No	No	#1/2/3	-	-	-
TN20	Flicker Cruise Tri	No	No	No	#1/2/3	-	-	-
TN21	Manifesto Tri	No	No	No	#1/2/3	-	-	-
TN22	Power Evert Tri	No	No	No	#1/2/3	-	-	-
TN23	Dazzle Tri	No	No	No	#1/2/3	-	-	-
TN24	Quiver Tri	No	No	No	#1/2/3	-	-	-
TN25	Power Sway Tri	No	No	No	#1/2/3	-	-	-
TN26	Evert Tri	No	No	No	#1/2/3	-	-	-
TN27	Alternating Rapid Flash Tri	No	No	No	#1/2/3	-	-	-
TN28	Swift Impact Tri	No	No	No	#1/2/3	-	-	-
TN29	Tango Tri	No	No	No	#1/2/3	-	-	-
TN30	Tremble Tri	No	No	No	#1/2/3	-	-	-
TN31	Shake Tri	No	No	No	#1/2/3	-	-	-
TN32	Evolver Tri	No	No	No	#1/2/3	Simultaneous	-	-
TN33	Corner Sweep Tri	No	No	No	#1/2/3	-	-	-
TN34	Corner Sweep Slow Tri	No	No	No	#1/2/3	-	-	-
TN35	Full/Sweep Tri	No	No	No	#1/2/3	-	-	-
TN36	Full/Sweep Slow Tri	No	No	No	#1/2/3	-	-	-
TN37	Center Sweep Tri	No	No	No	#1/2/3	-	-	-
TN38	Center Sweep Slow Tri	No	No	No	#1/2/3	-	-	-
TN39	Orbit Tri	No	No	No	#1/2/3	-	-	-
TN40	Orbit Slow Tri	No	No	No	#1/2/3	-	-	-
TN41	Double Orbit Tri	No	No	No	#1/2/3	-	-	-
TN42	Double Orbit Slow Tri	No	No	No	#1/2/3	-	-	-
TN43	Retrograde Orbit Tri	No	No	No	#1/2/3	-	-	-
TN44	Retrograde Orbit Slow Tri	No	No	No	#1/2/3	-	-	-
TN45	Progressive Alternate Tri	No	No	No	#1/2/3	-	-	-
TN46	Recurrent Tri	No	No	No	#1/2/3	Simultaneous	-	-



## LED Exterior Lightbar

## ARROW PATTERNS

### ELECTRICAL INSTALLATION (CONTINUED)

#	Name	SAE Compliant Timing	Color	Sequence	fpm	fps
1	Single Fast	No	-	-	-	-
2	Single Slow	No	-	-	-	-
3	Chaser Fast	No	-	-	-	-
4	Chaser Slow	No	-	-	-	-
5	Fill Fast	No	-	-	-	-
6	Fill Slow	No	-	-	-	-
7	Grow/Shrink	No	-	-	-	-
8	Warning w/Arrow	No	-	-	-	-
9	Warning w/Arrow Fill	No	-	-	-	-
10	Arrow Random 1	No	-	-	-	-
11	Arrow Random 2	No	-	-	-	-

**NOTE:** For settings below, Switch #2 does not need to be moved to the up position after each configuration. The switch can remain in the down position until the lightbar is completely configured and then moved to the Up position to store all the settings.

#### **Cruise Mode Configuration:**

- Set Switch #2 on Breakout box to down position (Switch #1 must be in Up position)
- Determine which module inputs are needed for cruise mode
- Apply voltage to the Cruise Mode activation wire
- Apply voltage to the light group wire(s) required (i.e. Inboard 1, 2, 3, etc.)
- Momentarily apply voltage to the pattern select wire to change the color between Off, Color 1, Color 2, and Color 3.

**NOTE:** If configuring a single color or dual color module, make sure the chosen color is configured for Off and not a color which does not exist on the module. The lightbar will flash color #1 of all modules configured for cruise mode. If a module flashes every 2 seconds and is not intended to be on when Cruise mode is activated, repeat steps 'd' and 'e' until module no longer flashes.

- Set Switch #2 on Breakout box to up position to save settings and return light-bar to normal operating mode

#### **Takedown and Work-light Configuration:**

- Set Switch #2 on Breakout box to down (Switch #1 must be in Up position)
- Determine which module inputs are needed for Takedowns or Work-lights
- Apply voltage to the Takedown activation wire
- Apply voltage to the light group wire(s) required (i.e. Inboard 1, 2, 3, etc.)
- Momentarily apply voltage to the pattern select wire to change the color between Off, Color 1, Color 2, and Color 3.

**NOTE:** If configuring a single color or dual color module, make sure the chosen color is configured for Off and not a color which does not exist on the module. The light-bar will flash color #1 of all modules configured for takedown. If a module flashes every 2 seconds and is not intended to be on when takedown is activated, repeat steps 'd' and 'e' until module no longer flashes.

- Set Switch #2 on Breakout box to up position to save settings and return light-bar to normal operating mode

#### **Scene light Configuration:**

- Set Switch #2 on Breakout box to down (Switch #1 must be in Up position)
- Determine which module inputs are needed for Scene Lighting
- Apply voltage to the Scene light activation wire
- Apply voltage to the light group wire(s) required (i.e. Inboard 1, 2, 3, etc.)
- Momentarily apply voltage to the pattern select wire to change the color between Off, Color 1, Color 2, and Color 3.

**NOTE:** If configuring a single color or dual color module, make sure the chosen color is configured for Off and not a color which does not exist on the module. The light-bar will flash color #1 of all modules configured for scene light. If a module flashes every 2 seconds and is not intended to be on when scene light function is activated, repeat steps 'd' and 'e' until module no longer flashes.

- Set Switch #2 on Breakout box to up position to save settings and return light-bar to normal operating mode



## LED Exterior Lightbar

### **ELECTRICAL INSTALLATION (CONTINUED)**

**NOTE:** For settings below, Switch #2 does not need to be moved to the up position after each configuration. The switch can remain in the down position until the lightbar is completely configured and then moved to the Up position to store all the settings.

#### **Cruise Mode Configuration:**

- a. Set Switch #2 on Breakout box to down position (Switch #1 must be in Up position)
- b. Determine which module inputs are needed for cruise mode
- c. Apply voltage to the Cruise Mode activation wire
- d. Apply voltage to the light group wire(s) required (i.e. Front Corner, Front Inboard 1, etc.)
- e. Momentarily apply voltage to the pattern select wire to change the color between Off, Color 1, Color 2, and Color 3.

**NOTE:** If configuring a single color or dual color module, make sure the chosen color is configured for Off and not a color which does not exist on the module. The lightbar will flash color #1 of all modules configured for cruise mode. If a module flashes every 2 seconds and is not intended to be on when Cruise mode is activated, repeat steps 'd' and 'e' until module no longer flashes.

- f. Set Switch #2 on Breakout box to up position to save settings and return light-bar to normal operating mode

#### **Takedown and Work-light Configuration:**

- a. Set Switch #2 on Breakout box to down (Switch #1 must be in Up position).
- b. Determine which module inputs are needed for Takedowns or Work-lights.
- c. Apply voltage to the Takedown activation wire.
- d. Apply voltage to the light group wire(s) required (i.e. Front Inboard 1, Rear Inboard 2, etc.).
- e. Momentarily apply voltage to the pattern select wire to change the color between Off, Color 1, Color 2, and Color 3.

**NOTE:** If configuring a single color or dual color module, make sure the chosen color is configured for Off and not a color which does not exist on the module. The light-bar will flash color #1 of all modules configured for takedown. If a module flashes every 2 seconds and is not intended to be on when takedown is activated, repeat steps 'd' and 'e' until module no longer flashes.

- f. Set Switch #2 on Breakout box to up position to save settings and return light-bar to normal operating mode

#### **Scene light Configuration:**

- a. Set Switch #2 on Breakout box to down (Switch #1 must be in Up position)
- b. Determine which module inputs are needed for Scene Lighting
- c. Apply voltage to the Scene light activation wire
- d. Apply voltage to the light group wire(s) required (i.e. Front Inboard 1, Rear Inboard 2, etc.).
- e. Momentarily apply voltage to the pattern select wire to change the color between Off, Color 1, Color 2, and Color 3.

**NOTE:** If configuring a single color or dual color module, make sure the chosen color is configured for Off and not a color which does not exist on the module. The light-bar will flash color #1 of all modules configured for scene light. If a module flashes every 2 seconds and is not intended to be on when scene light function is activated, repeat steps 'd' and 'e' until module no longer flashes.

- f. Set Switch #2 on Breakout box to up position to save settings and return light-bar to normal operating mode

#### **Stop / Turn / Tail (STT) Light Configuration:**

- a. Set Switch #2 on Breakout box to down position (Switch #1 must be in Up position).
- b. Determine which module inputs are needed for Stop / Turn / Tail Lights.
- c. Apply voltage to the Left Turn or Right Turn activation wires.
- d. Apply voltage to the light group wire(s) required (i.e. Rear Inboard 1, Rear Inboard 2, etc.).
- e. Momentarily apply voltage to the pattern select wire to change the color between Off, Color 1, Color 2, and Color 3.

**NOTE:** If configuring a single color or dual color module, make sure the chosen color is configured for Off and not a color which does not exist on the module. The light-bar will flash color #1 of all modules configured for STT function. If a module flashes every 2 seconds and is not intended to be on when an STT function is activated, repeat steps 'd' and 'e' until module no longer flashes.

- f. Set Switch #2 on Breakout box to up position to save settings and return light-bar to normal operating mode  
when scene light function is activated, repeat steps 'd' and 'e' until module no longer flashes.





## LED Exterior Lightbar

### ELECTRICAL INSTALLATION (CONTINUED)

#### **Arrow Color Configuration:**

- Set Switch #2 on Breakout box to down position (Switch #1 must be in Up position)
- Determine which module inputs are needed for Arrow function
- Apply voltage to the Left Arrow or Right Arrow activation wires
- Apply voltage to the light group wire(s) required (i.e. Rear Inboard 1, Rear Inboard 2, etc.)
- Momentarily apply voltage to the pattern select wire to change the color between Off, Color 1, Color 2, and Color 3.

**NOTE:** If configuring a single color or dual color module, make sure the chosen color is configured for Off and not a color which does not exist on the module. The light-bar will flash color #1 of all modules configured for Arrow function. If a module flashes every 2 seconds and is not intended to be on when an Arrow function is activated, repeat steps 'd' and 'e' until module no longer flashes.

- Set Switch #2 on Breakout box to up position to save settings and return light-bar to normal operating mode.

#### **Arrow Flash Pattern Configuration:**

- Set Switch #2 on Breakout box to down position (Switch #1 must be in Up position).
- Apply voltage to the Left Arrow activation wire to set Left Arrow pattern, apply voltage to Right Arrow activation wire to set Right Arrow pattern, apply voltage to Left Arrow and Right Arrow activation wires to set Center out Arrow pattern.
- Momentarily apply voltage to the pattern select wire to change the arrow flash pattern.
- Set Switch #2 on Breakout box to up position to save settings and return light-bar to normal operating mode.

### **IMPORTANT**

**WHEN PASSING CABLES THROUGH FIREWALL OR OTHER SHEETMETAL, INSERT GROMMET TO PROTECT THE CABLE!**

### **⚠ WARNING**

**Route wires only in locations that are not subjected to potential wear. Make sure to avoid routing wires in the deployment area of your air bag. Refer to your vehicle's owner's manual for airbag deployment zone.**

## PHOTO SENSOR

The photo sensor continuously monitors ambient light conditions and will control functions configured for operation with the photo sensor input. By default, the photo sensor will (SET) all light modules into low power mode when dark ambient light levels below 50 lux are detected for more than 5 seconds. When ambient light levels exceed 300 lux for 5 seconds, the low power mode will (CLEAR) turn off and the lightbar will revert back to full intensity.

The photo sensor is subject to ambient light conditions of the specific environment for the vehicle and needs to be thoroughly tested by the installer to ensure proper light levels and delay are selected to provide the most effective operation in different lighting conditions.

The photo sensor detects ambient light levels, so parking the vehicle under a bright street light during night-time use may (CLEAR) turn off the photo sensor input. Likewise, driving through a dark tunnel during daytime use may (SET) the photo sensor input. Ensure the operator of the vehicle is aware of such possible conditions and provide additional controls to the breakout box to allow the operator the ability to manually over-ride the functions when required.

Changing the ambient light SET/CLEAR levels may be modified by updating the setting in the 'Photo Sensor' tab in the PC Application.

The photo sensor controls may be updated by using the PC App. Refer to the PC App instructions for more detail.

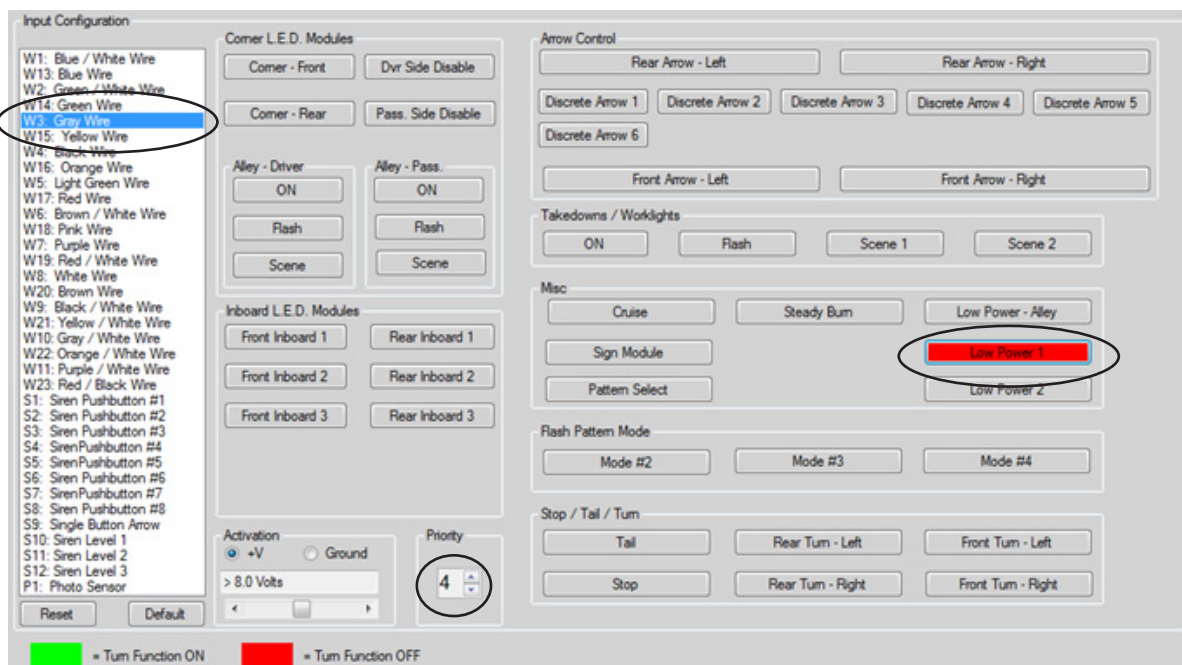
## PHOTO SENSOR OVER-RIDE CONFIGURATION INSTRUCTIONS

1. Click on 'Breakout Box Inputs' tab and click on 'P1: Photo Sensor' and note priority and which functions are activated when the photo sensor is active.



### PHOTO SENSOR OVER-RIDE CONFIGURATION INSTRUCTIONS CONT.

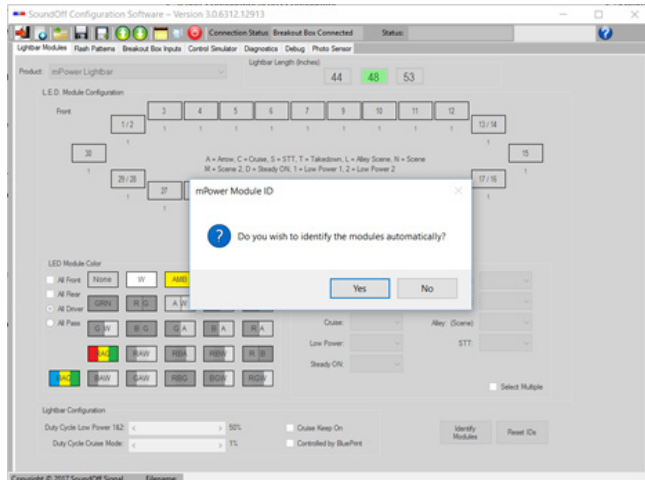
2. Click on the input wire/siren control to be used to over-ride the functions activated by the photo sensor and change the priority of the selected input wire/siren control to be a higher priority than the photo sensor control priority. Set the functions activated by the photo sensor to 'Turn Function OFF' (Red button) when the input wire/siren control is active.



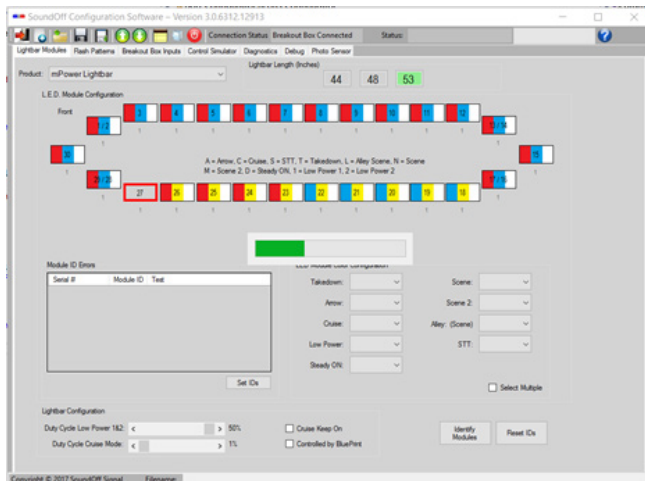
3. From the example in #2, when +V is applied to the gray wire, Low Power 1 will be turned off even if the photo sensor is active since the gray wire control is a higher priority than the photo sensor control.

### LIGHTBAR CONFIGURATION SOFTWARE: SETTING MODULE ID's

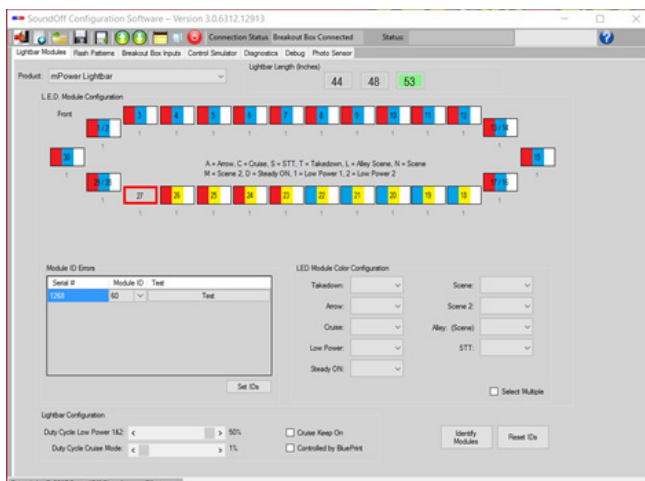
1. Make sure the lightbar is wired and connected properly.
2. Plug the breakout box into the PC.
3. Start the application:
  - a. The application will ask to identify the modules. Click Yes.



- b. The application will search for any missing or misconfigured modules. If there are any errors the modules in error will highlight with a red border as shown below.



- c. When the identification process is complete a list of modules with errors will be displayed with the current wrong module ID.





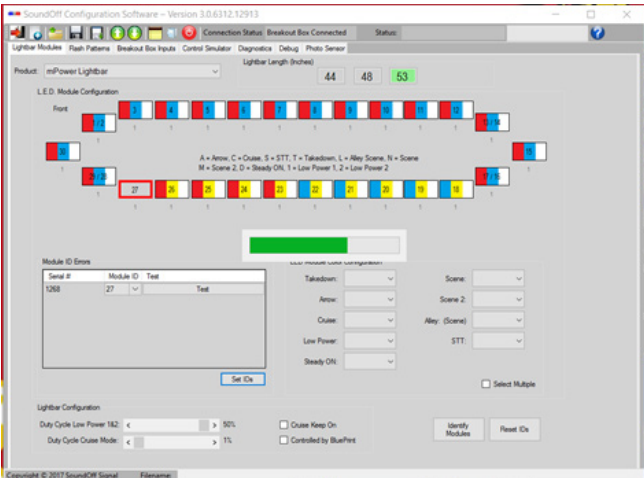
LED Exterior Lightbar

**LIGHTBAR CONFIGURATION SOFTWARE: SETTING MODULE ID's Cont.**

d. Change the module in the list to the ID desired and click Set IDs.



e. The application will go through the process of setting the desired module IDs and go through the process of identifying them again.

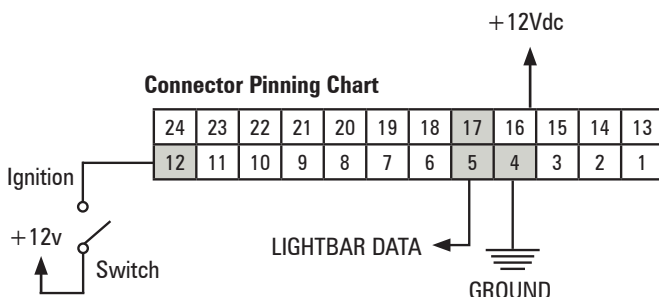
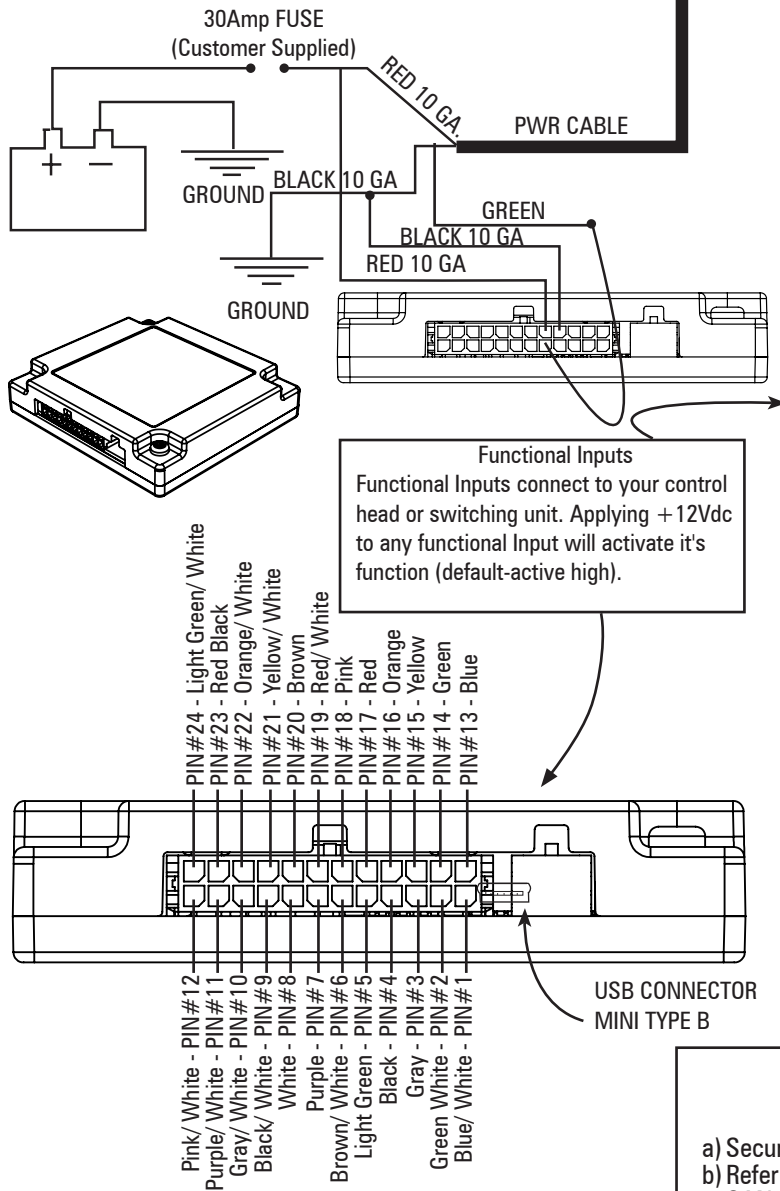


f. Once the module IDs are all identified properly they will display without the Module ID errors listed.





## LED Exterior Lightbar



## BREAKOUT BOX INSTRUCTIONS: (LIN COMMUNICATION)

- Securely snap in the 24-pin connector
- Refer to Table 1 for the input wire's default function
- Follow the label for the wire color to connect to a 12 Vdc source, which turns on that given light or lights
- Make sure your wire connections are secured and isolated from any other wire

Wire Function Defaults

Table 1

Wire Pin #	Wire Color	Wire Function
1	Blue/White	Rear Corners
2	Green/White	Rear Inboard 1 & 2
3	Gray	Mode 2 Select
4	Black	Ground
5	Light Green	LIN Data
6	Brown/White	Takedown + Alley Flash
7	Purple	Low Power 1
8	White	Pattern Select / Tail
9	Black/White	Left STT
10	Gray/White	Arrow - Right
11	Purple/White	Arrow - Left
12	Pink/White	Ignition Input
13	Blue	Front Corners
14	Green	Front Inboard 1 & 2
15	Yellow	Front Inboard 3, 4
16	Orange	Alley Driver
17	Red	+ Battery Constant
18	Pink	Scene 1
19	Red/White	Cruise
20	Brown	Takedown
21	Yellow/White	Rear Inboard 3, 4
22	Orange/White	Alley Passenger
23	Red/Black	Right STT
24	(Speed Sense 1) Light Green/White (Speed Sense 2) Light Green/White	Not Configured

### NOTE:

Configuring TDs, Scene, Cruise, and warning modules using wire-tap configuration method (when **NOT** using software to configure) will be limited to the front and rear modules assigned to each wire.

## CAN BREAKOUT BOX INSTRUCTIONS: (CAN COMMUNICATION)

- Securely snap in the 2-pin, 24-pin, and RJ45 connectors
- Refer to Table 1 for the input wire default functions and to Table 2 for the CAN wire functions
- Follow the label for the wire color to connect to a 12 Vdc source, which turns on that given light or lights
- Make sure your wire connections are secured and isolated from any other wire
- If extending the 2-pin harness, a shielding wire running the length of the entire harness may be necessary

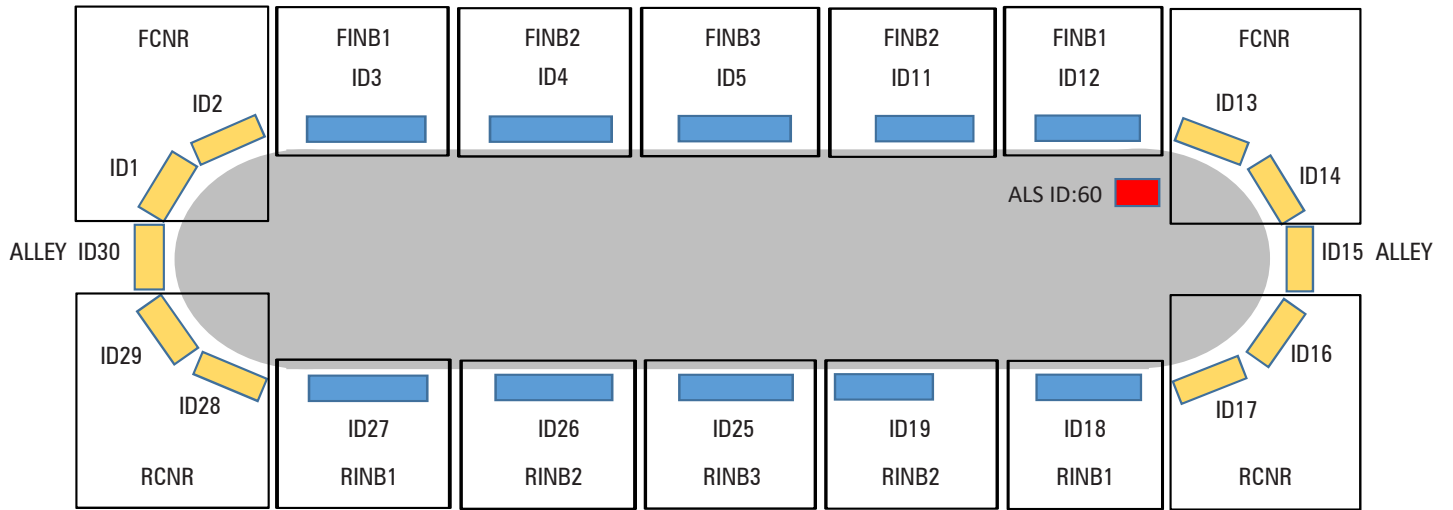
Table 2

Wire Pin	Color	Function
3	Green	CAN Low
5	Yellow	CAN High

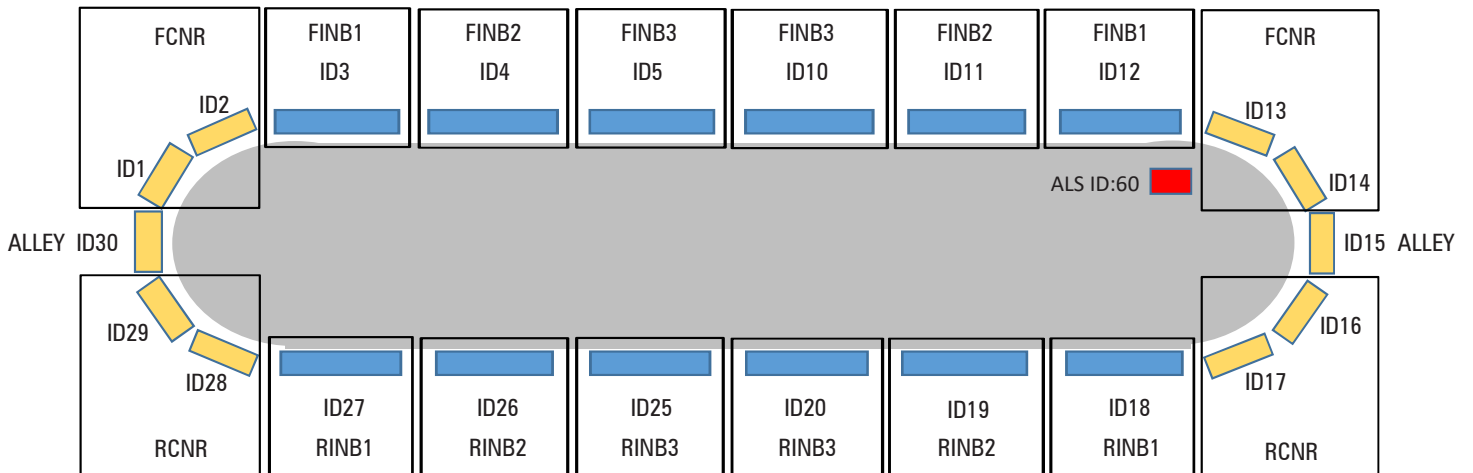
CAN CONNECTOR

CONNECTOR PRESENT WITH CAN BOB

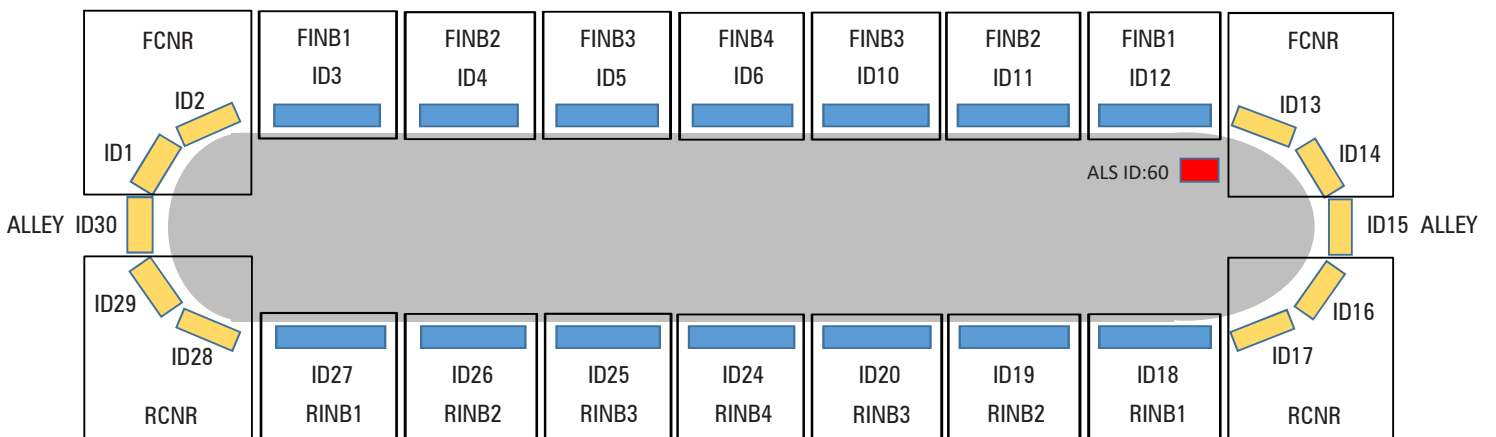
## LED Exterior Lightbar



**42" LIGHTBAR**



**48" LIGHTBAR**



**55" LIGHTBAR**

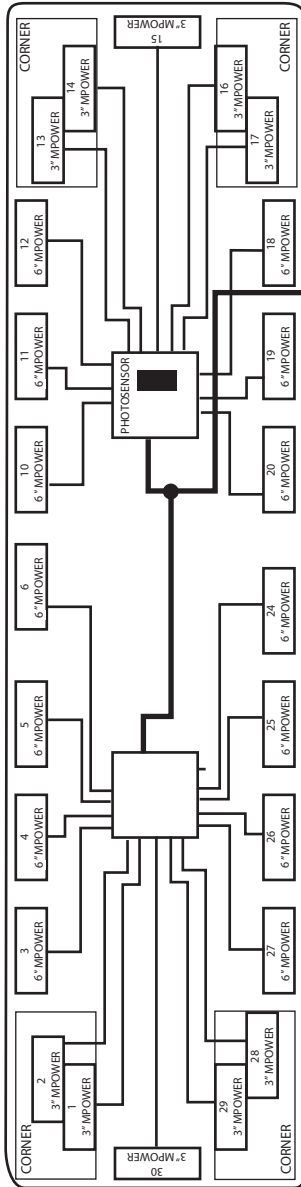
LIGHT MODULE WIRE HARNESS LOCATIONS

BOB HARNESS

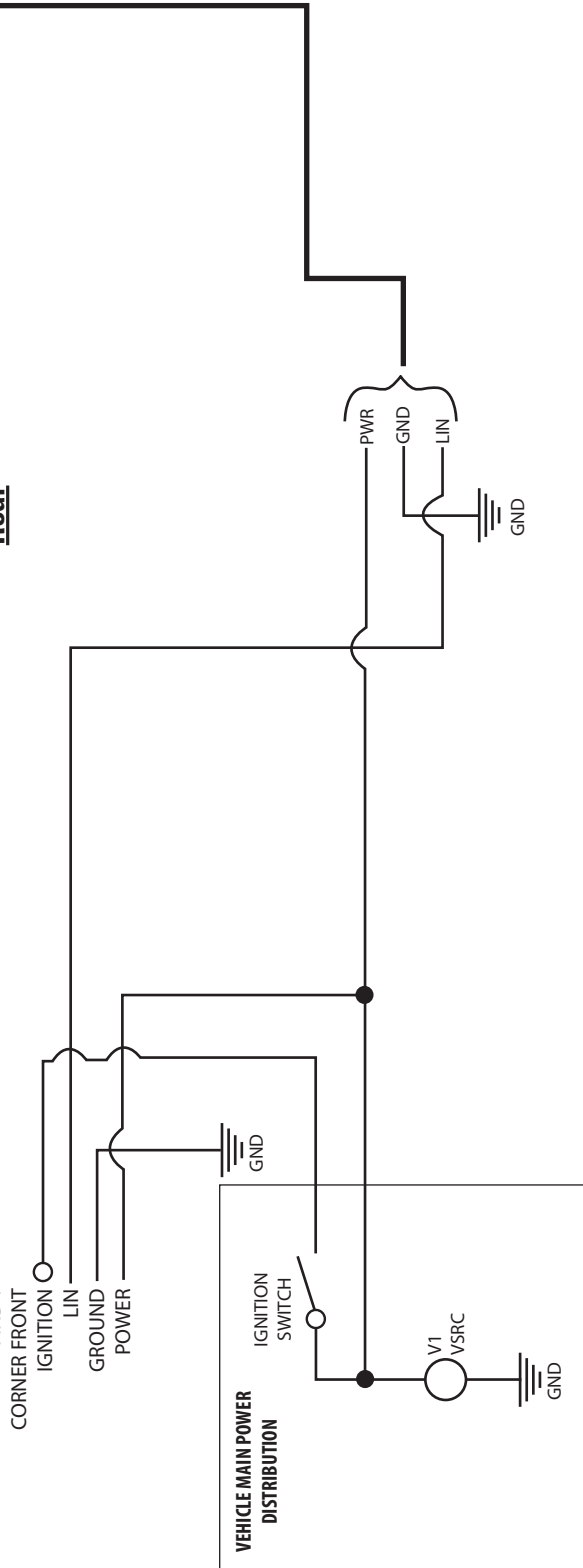
- SYNC
- PATTERN SELECT
- SCENE
- LOW POWER
- CRUISE
- MODE
- TD ALLEY FLASH
- ALLEY LEFT
- ALLEY RIGHT
- TAKEDOWN
- ARROW LEFT
- ARROW RIGHT
- RINB 3
- RINB 2
- RINB 1
- CORNER REAR
- FINB 3
- FINB 2
- FINB 1
- CORNER FRONT

BREAKOUT BOX

Front (55" Lightbar shown)



Rear





LED Exterior Lightbar

Inboard and Corner Modules Replacement:

- 1. Disconnect main power.
- 2. Remove top cover by removing screws.
- 3. Locate module and remove mounting nuts.
- 4. Disconnect module power cable from power distribution module.
- 5. Route wire from new light through lightbar frame and connect to power distribution board
- 6. Replace module and hardware that fasten module to frame.
- 7. Restore power to bar and test new module to ensure functionality.
- 8. Replace top cover of bar with screws removed in step 2.
- 9. Configure the ID of the replacement module through the PC app\*

\*The ID can be manually set using the wire interface as outlined in section below

Driver Module Replacement:

- 1. Verify power has been removed from lightbar before attempting service
- 2. Remove top cover
- 3. Unscrew 3 pin power/data wire from connector and LED module connectors from power distribution photo sensor board, noting location.
- 4. Remove power distribution/photo sensor board.
- 5. Snap new distribution/photo sensor board assembly into housing
- 6. Screw 3 pin power/data wire to connector and LED module connectors into distribution/photo sensor board assembly.
- 7. Plug light modules into closest connector available.
- 8. Apply power to lightbar and verify proper operation.

The ID can be Manually set using the wire interface as outlined in the section below:

- 1. Apply Ground to Black wire.
- 2. Hold Green wire to Ground. (must be able to remove from Ground)
- 3. Apply 12V to Red wire.
- 4. Remove Green wire from Ground

\*Green wire must be removed while light head is on when applying 12V, this is extremely time dependent

- 5. Use table for ID Functions

Wire Held Time	Module LED Feedback	Device ID Response
< 1 second	Off	Blink current ID
> 1 and < 2 seconds	70%	Advance ID by 1
> 2 and < 3 seconds	30%	Decrement ID by 1
> 3 and < 4 seconds	Off	Advance ID by 10
> 4 seconds	70%	No change, feature is locked out until power is cycled

Fuse	Connectors
FH3	J6-(X)
FH4	J7-(X)
FH2	J5-(X)
FH1	J4-(X)

The module displays the module ID by flashing the LEDs. The user can determine the module ID number by watching the LEDs and counting the number of bright long winks (50ms on @70% intensity) vs dim short winks (20ms on @ 5% intensity). Each long wink represents 10 module ID counts and each short wink represents 1 module ID count. In the case of dual and tri color lights, color 1 will flash for the bright long winks and color 2 for the short dim winks. In the case of single color lights all winks will be of the same color.

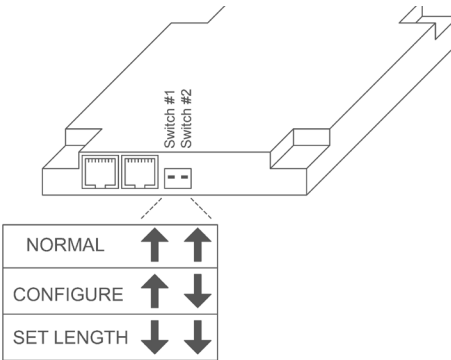
Below is a representation of the module ID wink sequence for an R/B/A module with an ID of 24:



Setting Light-bar Length: (Length comes preset from factory)

\*\* NOTE: Entering this configuration mode, will reset the light-bar to factory defaults

- a. Set Switch #1 and Switch #2 on Breakout box to down position
- b. Momentarily apply voltage to pattern select wire to change the length of the light-bar configuration
  - a. 42" Red LED OFF, Green LED Flashes 1 Time
  - b. 48" Red LED OFF, Green LED Flashes 4 Times
  - c. 55" Red LED ON, Green LED Flashes 1 Time
  - d. Repeat step 'b' until correct light-bar length is selected
- e. Set Switch #1 and Switch #2 on Breakout box to Up position to store light-bar length



NOTE: For settings above, Switch #2 does not need to be moved to the up position after each configuration. The switch can remain in the down position until the lightbar is completely configured and then moved to the Up position to store all the settings.



## LED Exterior Lightbar

### **mpower TROUBLESHOOTING**

#### **NORMAL OPERATION**

Under Normal operation with ignition input powered, the breakout box will have the Green LED ON and the Red LED light will be ON whenever an input is active and both switches are in the UP (off) position.

#### **NO OPERATION**

No Green LED flashing on Breakout box;

Check input power and ground to lightbar and breakout box

**Check Ignition Input wire and verify a minimum of 10.0 Volts is present on the wire**

Check the fuses in the lightbar power distribution unit.

#### **NO or INCORRECT WARNING LIGHTS**

Breakout box LED's operating correctly;

Check IDs on LED modules in lightbar. Verify they are all set correctly.

No steady Red LED on breakout box;

Check 24-pin connector at breakout box (insure it is snapped in correctly), check appropriate input to breakout box for output lights which should be on. Verify voltage is present at the wire input to the breakout box for the function being tested

#### **NO TAKEDOWNS LIGHTS**

Breakout box LED's operating correctly;

Verify configuration and make sure light modules are configured for takedown function

No steady Red LED on breakout box;

Check 24-pin connector at breakout box (insure it is snapped in correctly), check appropriate input to breakout box for output lights which should be on

#### **INCORRECT OR NO ARROW OPERATION**

Breakout box LED's operating correctly;

Verify configuration and make sure light modules are configured for arrow function.

No Steady Red LED on breakout box;

Check 24-pin connector at breakout box (ensure it is snapped in correctly), check appropriate input to breakout box for output lights which should be on.

#### **NO LIGHT OPERATION IN ONE LIGHTBAR QUADRANT**

Breakout box LED's operating correctly;

Remove top cover and follow 4 non-working modules to fuse location. If fuse is blown, check for shorts in cabling and LED module. Replace any damaged cables or modules and replace fuse. If fuse blows again, replace defective power distribution assembly.

No Steady Red LED on breakout box;

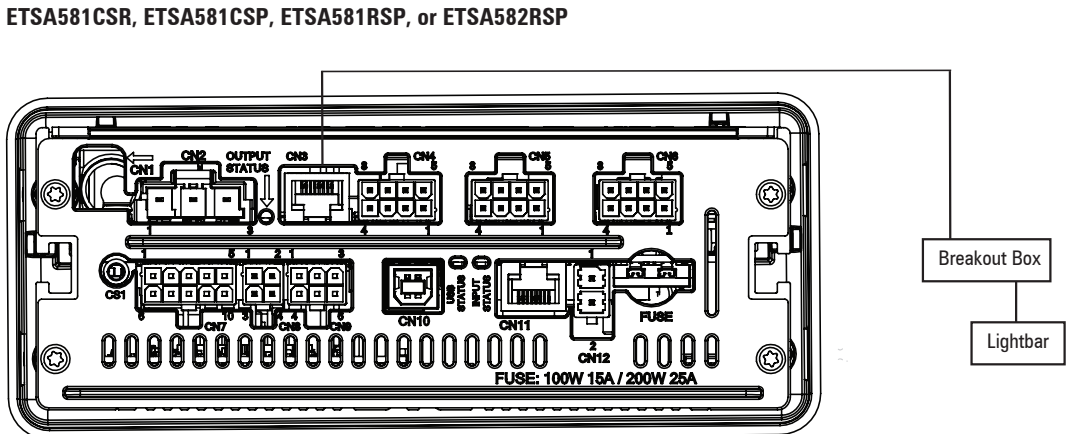
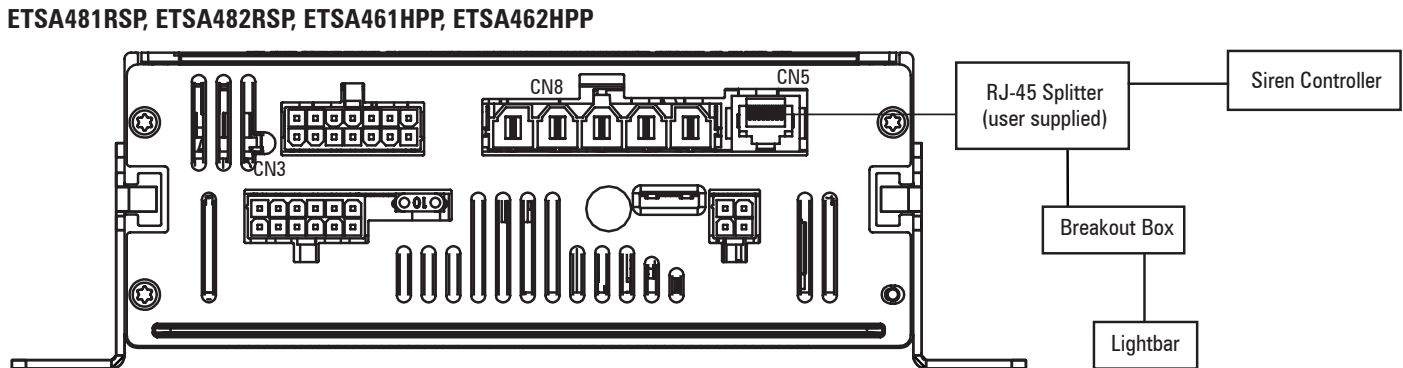
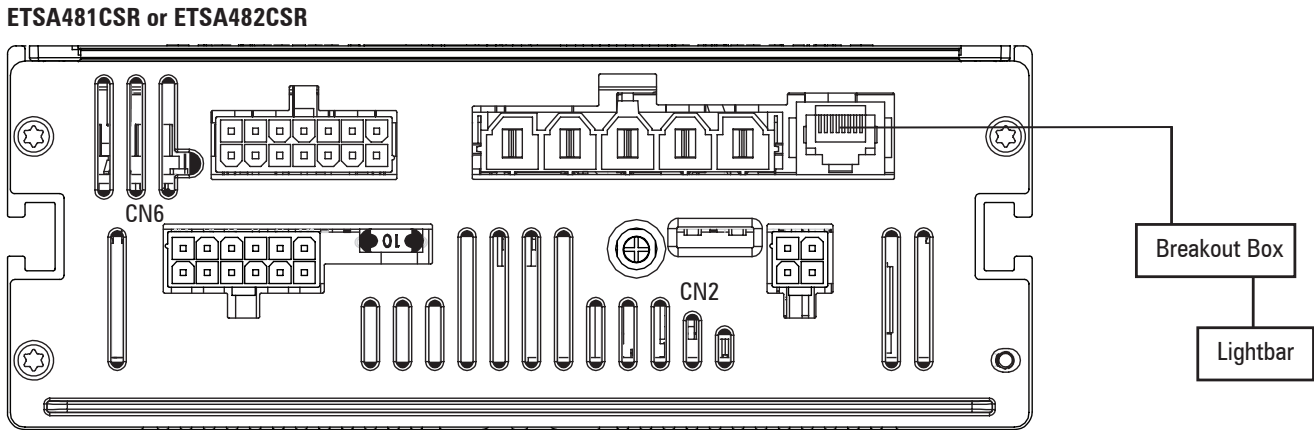
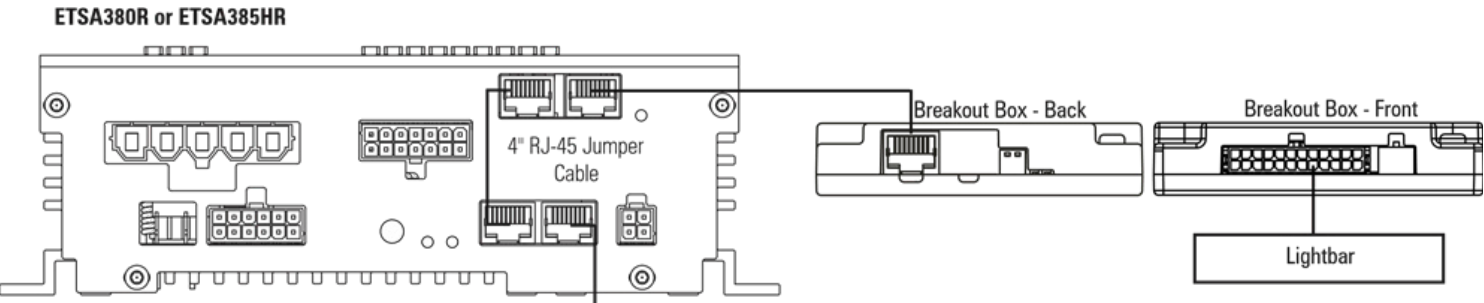
Check 24-pin connector at breakout box (ensure it is snapped in correctly), check appropriate input to breakout box for output lights which should be on.



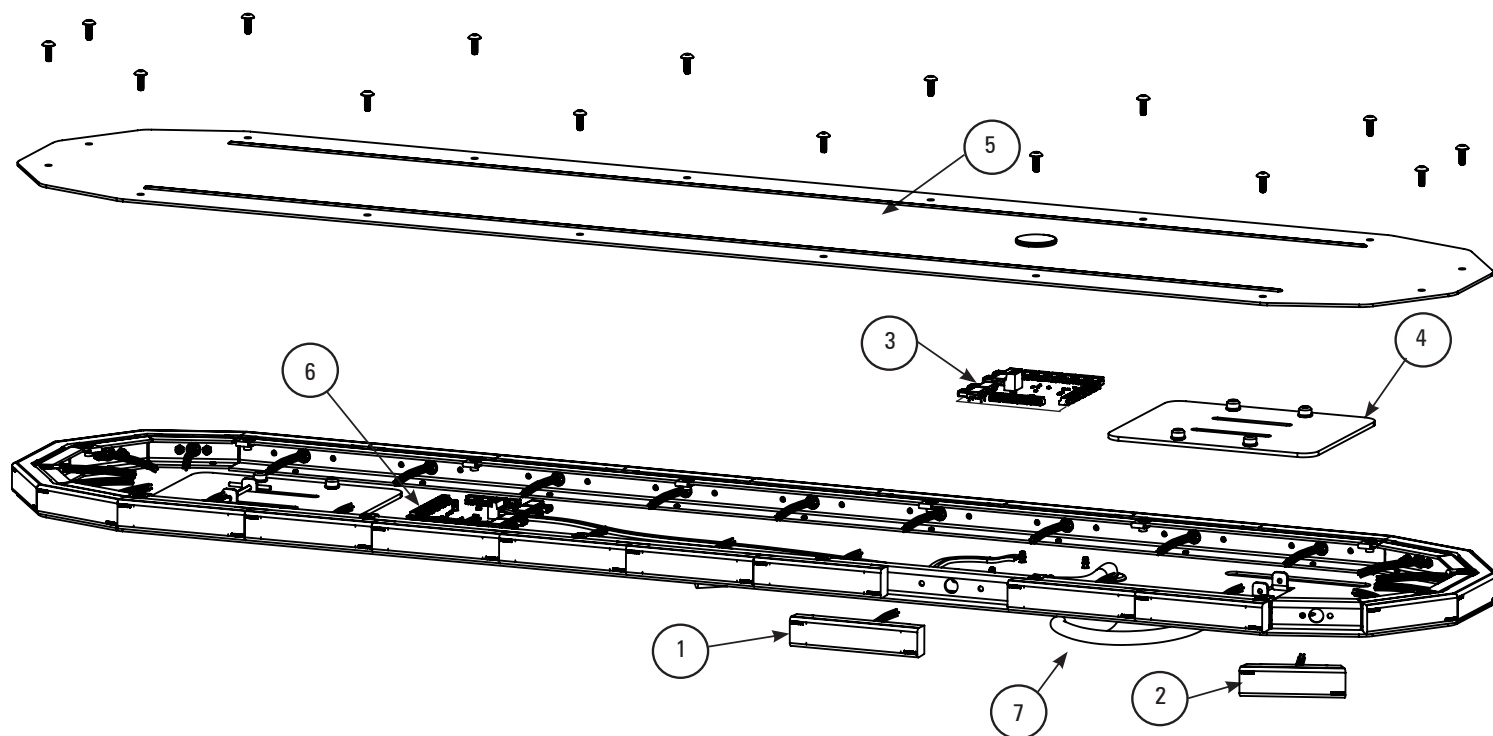
## LED Exterior Lightbar

# CONNECTION OF LIGHTBAR BREAKOUT BOX TO SOUNDOFF SIGNAL SIREN:

Note: Requires PC configuration app to map siren control switches to lightbar functions.  
 Plug 1 end of RJ-45 cable to available jack on siren amplifier.



## LED Exterior Lightbar



## REPLACEMENT PARTS & ACCESSORIES

ITEM #	PART#	DESCRIPTION
2	PMPLBCSS204(x)C	4 LED SINGLE COLOR 3" CORNER MODULE (SAE)
2	PMPLBCSS208(x)C	8 LED SINGLE COLOR 3" CORNER MODULE (SAE)
2	PMPLBCES208(x)C	8 LED SINGLE COLOR 3" CORNER MODULE (ECE)
2	PMPLBCSD208(x)C	8 LED DUAL COLOR 3" CORNER MODULE (SAE)
2	PMPLBCST212(xxx)C	12 LED TRI COLOR 3" CORNER MODULE (SAE)
1	PMPLBLLS206(x)C	6 LED SINGLE COLOR 6" INBOARD MODULE
1	PMPLBLLS208(x)C	8 LED SINGLE COLOR 6" INBOARD MODULE
1	PMPLBLLD212(x)C	12 LED DUAL COLOR 6" INBOARD MODULE
1	PMPLBLLT218(xxx)C	18 LED TRI COLOR 6" INBOARD MODULE
6	PMPLBDRV0	PWR DISTRIBUTION BOARD w/o AUTODIM
3	PMPLBDRV1	PWR DISTRIBUTION BOARD w/ AUTODIM
7	PMPLBHPW1	POWER HARNESS
	PMPLBJ00	BREAKOUT BOX - STANDARD LIN COMMUNICATION
	PMPLBJC1	BREAKOUT BOB - CAN COMMUNICATION
5	PMPLBTTL42	42" TOP COVER
5	PMPLBTTL48	48" TOP COVER
5	PMPLBTTL55	55" TOP COVER
4	PMPLBKPLT	INTERNAL MOUNT PLATE
	PMPLBK00	STANDARD FIXED HEIGHT MOUNT w/THICK & THIN PADS
	PMPLBK01	STANDARD FIXED HEIGHT MOUNT w/THICK PADS
	PMPLBK02	STANDARD FIXED HEIGHT MOUNT w/THIN PADS
	PMPLBK03	CLASSIC FIXED HEIGHT MOUNT
	PMPLBK04	EXTRA LOW FIXED HEIGHT MOUNT
	PMPLBK05	XtraFit UNIVERSAL MOUNT
	PMPLBK06	HEADACHE RACK MOUNT



## LED Exterior Lightbar

# WARRANTY & RETURN GOODS PROCEDURE

### CLEANING & CARE OF YOUR LIGHTBAR:

Keeping the lenses clean will optimize the performance of the lightbar. The special silicone lenses should be cleaned regularly to remove dirt, grime and insects, with a mild soapy water using a soft cloth or brush. DO NOT use high pressure spray directly on the light bar as it can damage the lenses.

### MOUNTING INTEGRITY:

A review of bolt/hardware/mounting bracket integrity should be performed at the beginning and end of each shift.

### WARNING MESSAGES - PLEASE READ:

**WARNING** - DRILLING ANY HOLES INTO THE LIGHTBAR IS NOT RECOMMENDED! THE RISK OF DAMAGING INTERNAL COMPONENTS AND THE RESULTING FAILURE OF THE LIGHTBAR WILL VOID ANY WARRANTY OF THIS PRODUCT.

**WARNING** - CARE MUST BE TAKEN WHEN DRILLING THROUGH THE ROOF OF THE VEHICLE NOT TO DRILL INTO ANY EXISTING WIRING AND NOT TO DRILL THROUGH THE HEADLINER OR SUPPORT MEMBERS OF THE VEHICLE. CHECK BOTH SIDES OF THE MOUNTING SERVICE PRIOR TO DRILLING. DE-BURR ANY HOLES AND REMOVE ANY METAL SHARDS OR REMNANTS. INSTALL GROMMETS INTO ALL WIRE PASSAGE HOLES.

**WARNING** - ROUTE WIRES ONLY IN LOCATIONS THAT ARE NOT SUBJECTED TO POTENTIAL WEAR. MAKE SURE TO AVOID ROUTING WIRES IN THE DEPLOYMENT AREA OF YOUR AIR BAG. REFER TO YOUR VEHICLE OWNER'S MANUAL FOR AIR BAG DEPLOYMENT ZONES.

**WARNING** - ALL CUSTOMER SUPPLIED POWER WIRES CONNECTING TO THE POSITIVE (+) OR NEGATIVE (-) BATTERY TERMINAL OR LOCAL CHASSIS GROUND (-) MUST BE SIZED TO SUPPLY AT LEAST 125% OF THE MAXIMUM CURRENT AND PROPERLY FUSED AT THE POWER SOURCE WITH APPROPRIATELY RATED FUSE.

**IMPORTANT:** When passing cables through fire wall or other sheet metal, insert grommet to protect the cable!

### WARRANTY RETURN PROCESS:

Please contact your SoundOff Signal Sales Representative, Customer Services staff or our Technical Department (800.338.7337) for a RMA #, Return Merchandise Authorization Number.

The following information is required for issuance of the RMA #:

- Reason for returning the product\*
- Address where replacement product is to be shipped\*
- Telephone number where you may be reached\*
- SoundOff Signal invoice number on which product was purchased\*\*
- SoundOff Signal part number and serial number\*\*
- E-mail address where RMA # should be e-mailed\*\*
- Fax number where RMA # should be faxed\*\*

\* RMA # will not be given without this information.

\*\* If available, please provide this information.

SoundOff Signal will NOT accept returns without an RMA #. Each RMA # is good for only one (1) return and will expire (30) days after the date it was issued. Products must be shipped back to SoundOff Signal and the RMA # clearly marked on the outside of the package near the shipping label. Please use the following address on your shipping label:

SoundOff Signal  
ATTN: RMA # / Technical Services  
3900 Central Parkway  
Hudsonville, MI 49426

### WARRANTY EXCLUSIONS:

Shipping & Handling, labor and service fees are non-refundable. SoundOff Signal is not liable for any damage due to installation or personal injury as a result of using SoundOff Signal product.

### WARRANTY FORFEITURE:

Warranty will not be granted if the Warranty Return Policy & Procedure rules are not strictly followed. Physical damage resulting from customer abuse will void warranty. Warranty will also be voided if any SoundOff Signal and/or manufacturer serial tags, product stickers, seals, or the like, are removed, altered or tampered with. Returned product that is damaged by shipping via the RMA # procedure is not the responsibility of SoundOff Signal.

Document effective date on cover and below supersedes previously dated policies and statements.

There are no other warranties, expressed or implied, including, but not limited to, any implied merchantability or fitness for a particular use. SoundOff Signal reserves the right to modify this warranty statement at any time; or to discontinue, modify, or upgrade any products of its manufacture with design improvements without prior notice.