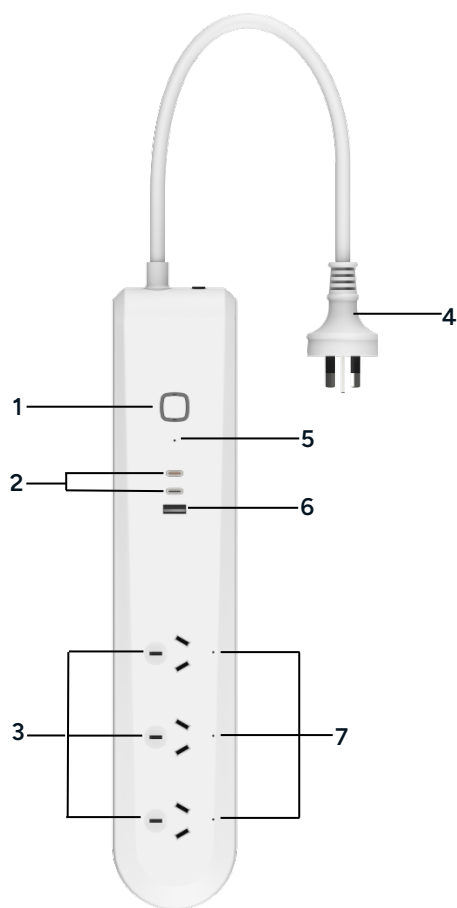


## Kogan SmarterHome™ 30W PD Smart Power Board

**with Energy Metre (3 Outlets & 2 USB-C Ports)**

KASPS30WACB

# Overview



- 1 Reset Button
- 2 USB-C Port
- 3 Outlet
- 4 Power Plug
- 5 Pairing Indicator
- 6 USB-A Port
- 7 Operation Indicators

# Operation

1. Connect the power plug to an electrical outlet and turn the outlet on.
2. Connect your device to one of the 3 available electrical outlets on the power board.
3. Once successfully connected, the 'Operation' indicator will illuminate, confirming the electrical outlet is active.
4. Alternatively, use one of the USB-C ports or the USB-A port to charge your device directly.

# Connect to the SmarterHome™ App

## Install the App

Download the Kogan SmarterHome™ app from the Apple App Store (iOS) or the Google Play Store (Android).



App Store (iOS)

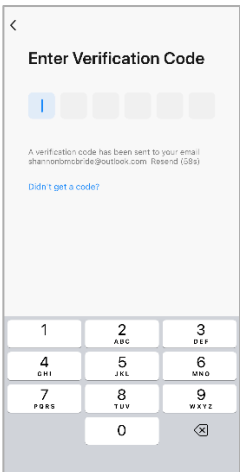
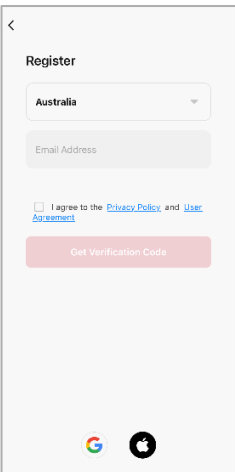
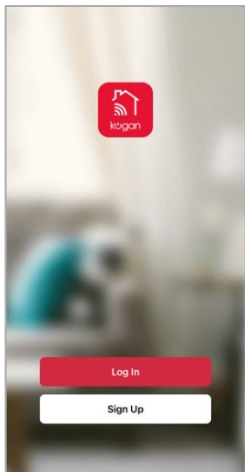


Play Store (Android)



## Log In or Sign Up

1. If you already have a SmarterHome account, tap 'Log In'. To register a new account, tap 'Sign Up'.
2. The app will automatically recognise your country. If needed, you can manually select your country from the drop down menu. Enter your email address, agree to the Privacy Polics and User Agreement, and tap 'Get Verification Code' to continue.
3. A 6-digit code will be sent to the submitted email address. Enter the code before the one-minute timer expires.



- 4. Enter a password that uses 6-20 characters with a mix of letters and numbers and tap 'Done'.
- 5. Enable the permissions and tap 'Go to App'.

<


Set Password

Password

Use 6-20 characters with a mix of letters and numbers

Done

Go to App



To provide you with better services, we request the following permissions:


The following functions can be enabled or disabled in the app settings.

Service Maintenance & Improvement Activity

Allow us to collect data related to product usage. Basic functionality will still be available if permissions are disabled, but the experience optimization policy based on data preferences will be ineffective.

Personalized Recommendations

Allow us to recommend content to you, including experience optimization, scene linkage, and best usage advice for devices. If you disable this function, we will no longer send you potentially interesting content.



No devices

Add Device

Home

Scene

Me

## Set the Device in Pairing Mode

When the device is first turned on, it may automatically enter pairing mode (the 'Pairing' indicator flashes rapidly).

If not automatically in pairing mode when powered on, you can manually set the device in pairing mode by:

1. Powering the device off for 10 seconds, then powering it on again.
2. Pressing and holding the 'Reset' button for 5 seconds until the 'Pairing' indicator flashes rapidly.

## Add the Device to the App

1. Open the SmarterHome™ app.
2. Tap the '+' icon in the top right corner of the screen and then tap 'Add Device'.
3. Tap 'Add' when the device appears. Alternatively, select the product type from the list of options in the app (Electrical > Power Strips).
4. Follow the prompts to add your device to the app.

### Notes:

- The device and the app must use the same Wi-Fi network.
- The device is only compatible with 2.4Ghz networks.

## Having Trouble Connecting?

The prior steps detail the process for 'EZ Mode' connection. If that does not work for your connection, we suggest trying it again, and if still no success, attempting the following method for AP Mode connection.

## Set the Device in AP Pairing Mode

To set the device in pairing mode:

1. Power the device off for 10 seconds, then power on again.
2. Press and hold the 'Reset' button for 5 seconds until the 'Pairing' indicator flashes rapidly.
3. Press and hold the 'Reset' button again for 5 seconds until the 'Pairing' indicator flashes slowly.

## Add the Device to the App

When the device is in AP pairing mode, follow the previous steps to add the device to the app.

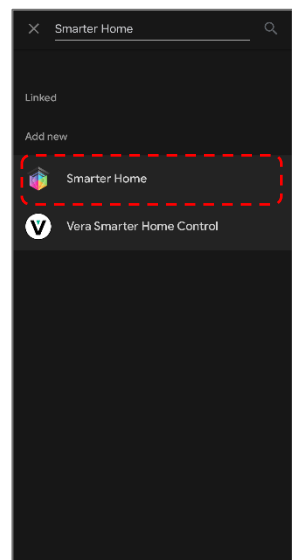
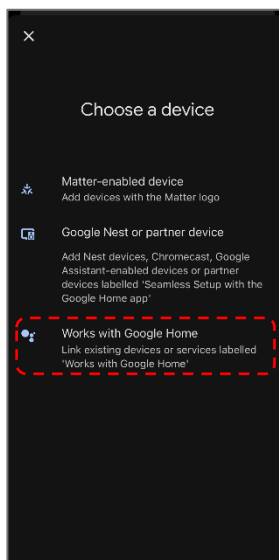
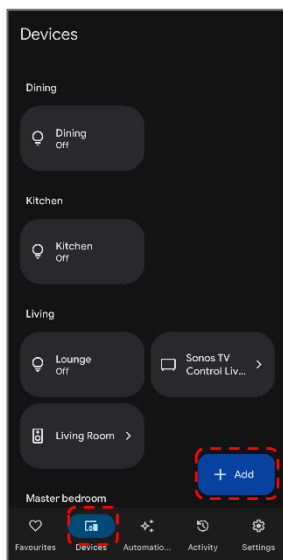
## Connectivity Support

Scan the QR code below or go to <https://help.kogan.com/s/article/Kogan-SmarterHome-App-Connectivity-Support> and follow the pairing instructions for EZ or AP mode.



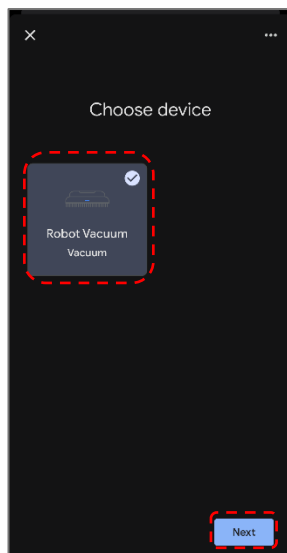
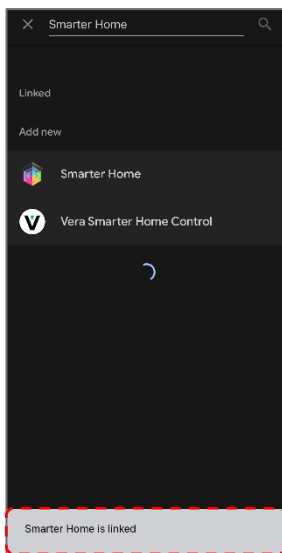
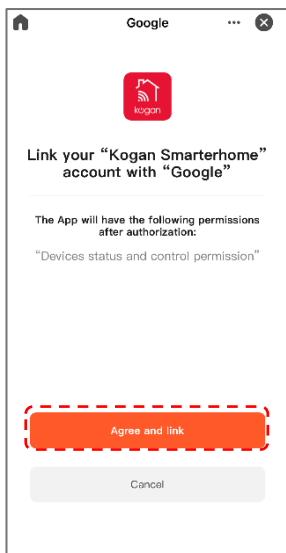
# Google Home

1. Ensure you are logged into the Kogan SmarterHome™ app.
2. Open the Google Home app.
3. Go to the devices tab and tap the '+ Add' button in the lower right corner.
4. Tap 'Works with Google Home'.
5. Search for 'Smarter Home' in the search bar and select 'Smarter Home' from the results.

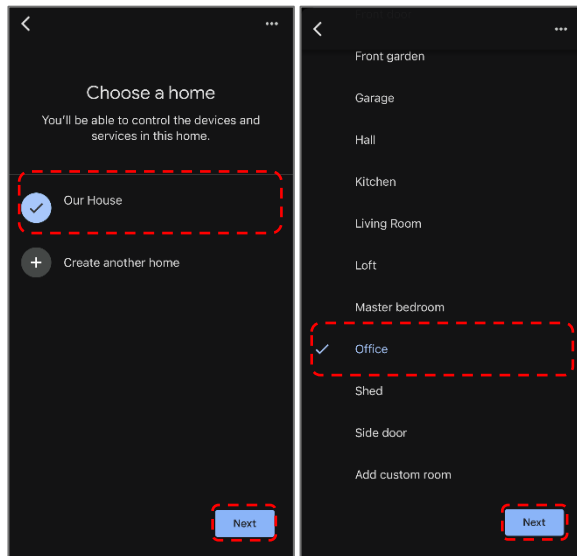




6. Tap the 'Agree and link' button.
7. Search for 'Smarter Home' in the search bar and select 'Smarter Home' from the results.
8. Once linked, a 'Smarter Home is linked' pop-up will appear at the bottom of the screen.
9. Tap your device and then tap the 'Next' button.

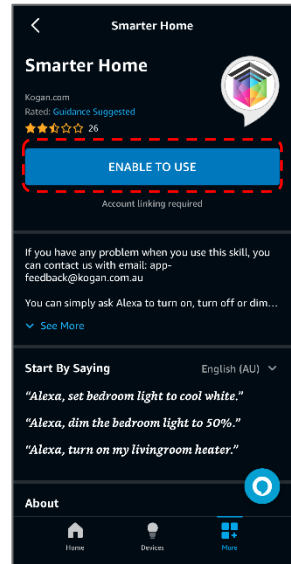
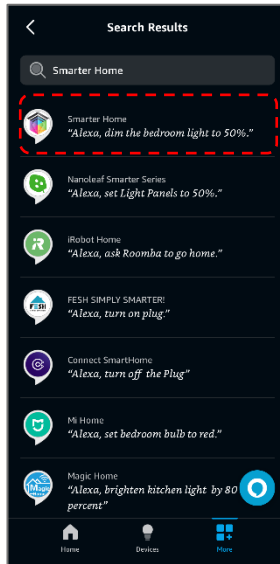
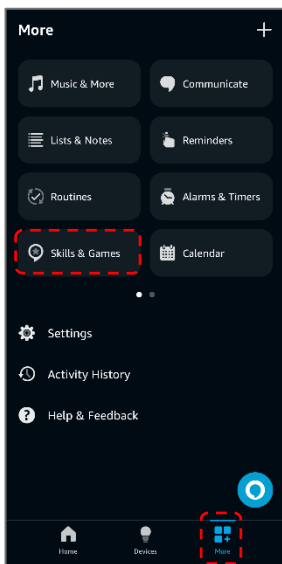


10. Select the home you wish to add the device to and tap the 'Next' button.
11. Select the room your device is in and tap the 'Next' button.

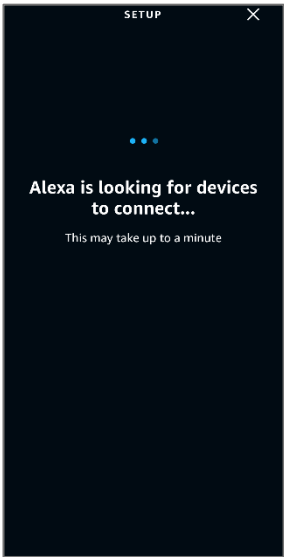
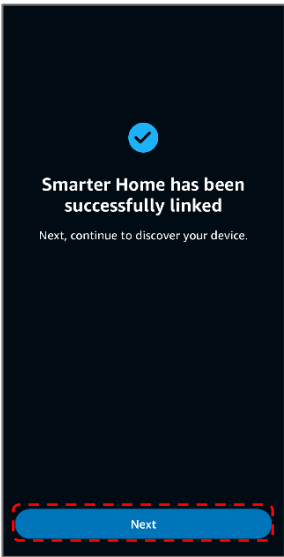
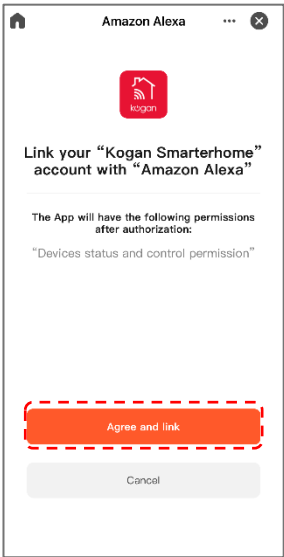


# Amazon Alexa

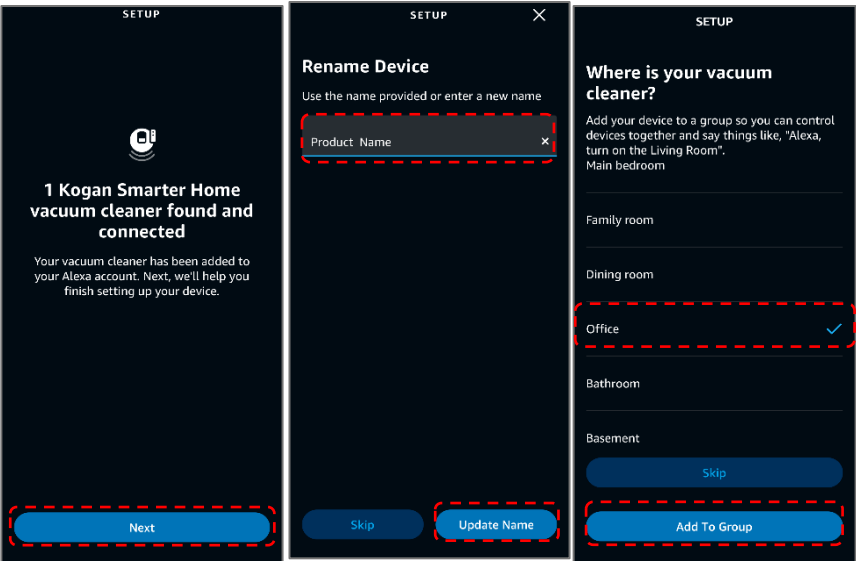
1. Ensure you are logged into the Kogan SmarterHome™ app.
2. Open the Amazon Alexa app.
3. Go to the 'More' tab and tap 'Skills & Games'.
4. Search for 'Smarter Home' in the search bar and select 'Smarter Home' from the results.
5. Tap the 'ENABLE TO USE' button.



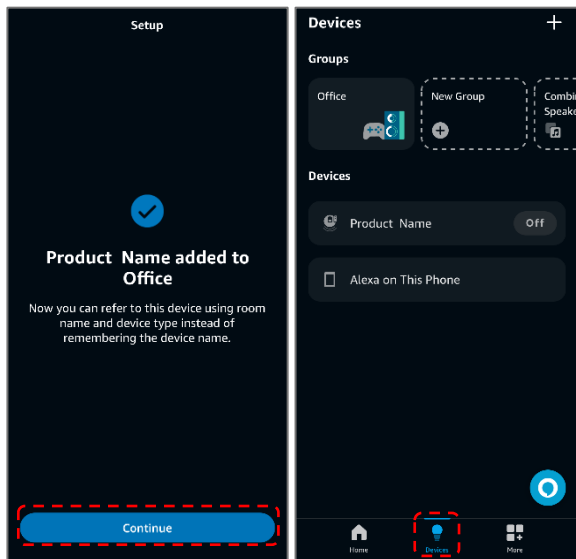
- 6. Tap the 'Agree and link' button.
- 7. Once linked, tap 'Next'. Alexa will search for any compatible devices.



- 8. Once your device has been found, tap 'Next'.
- 9. Rename the device to your desired name and tap 'Update Name'.
- 10. Select the room your device is in and tap 'Add To Group'



11. Once the device has been successfully added to your desired room, tap 'Continue'.
12. You can view and manage your device from the 'Devices' tab.



# Specifications

Power Input	240V~, 50Hz
Max Total Load	10A or 2400W
USB Output	
USB-C 1 PD30W	5V=3A, 9V=3A, 12V=2.5A, 15V=2A, 20V=1.5A
USB-C 2	5V=3A
USB-A: QC18W	5V=3A, 9V=2A, 12V=1.5A
USB-C 1 + USB-A	PD20W + 5V=2.4A (32W total)
USB-C 1 + USB-C 2	PD20W + 5V=2.4A
USB-C 2 + USB-A	5V=3A (total)
USB-C 1 + USB-C 2 + USB-A	PD20W + 5V=2.4A (32W total)
Wi-Fi	802.11b/g/n, 2.4GHz

**CAUTION:** If the power cord is damaged, it must be replaced by Kogan.com, its service agent or a licensed professional in order to avoid a hazard.

### **Need more information?**

We hope that this user guide has given you the assistance needed for a simple set-up.

For the most up-to-date guide for your product, as well as any additional assistance you may require, head online to **help.Kogan.com**.

