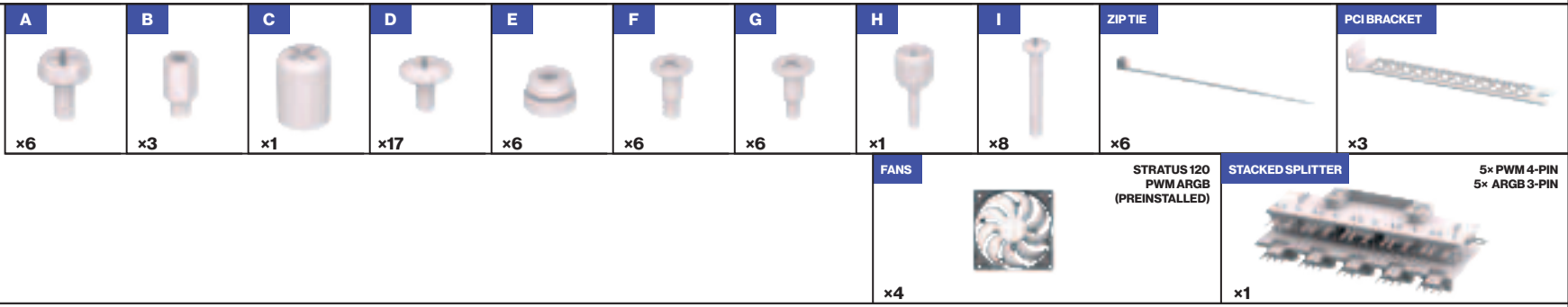
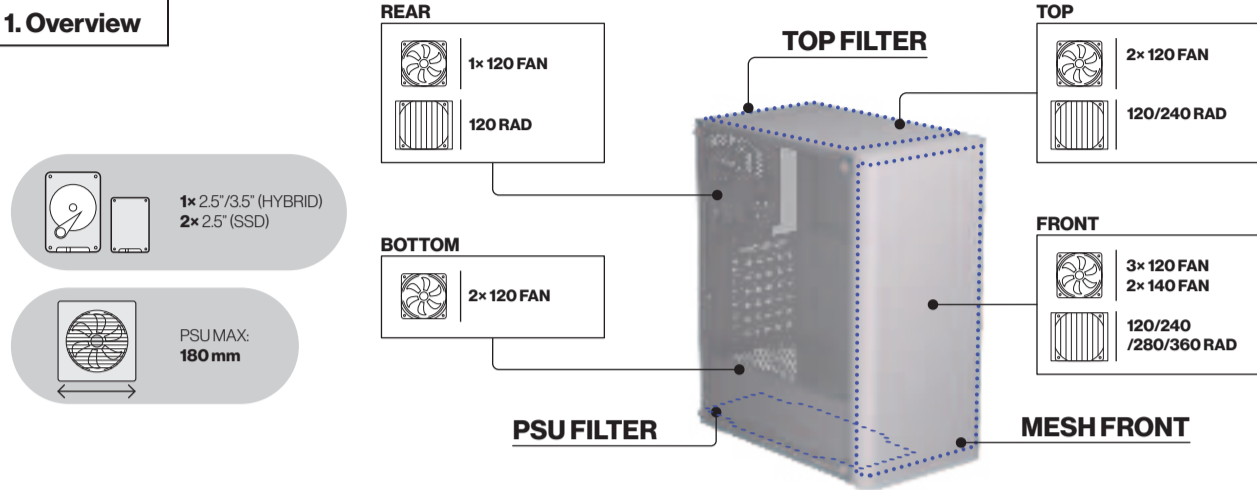


# Ventum 200 ARGB

## ACCESSORIES

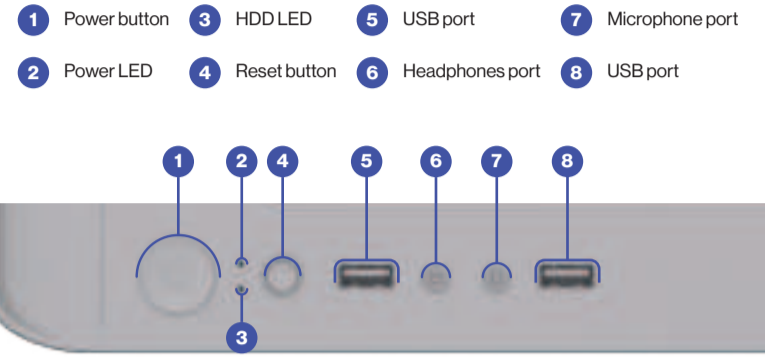


## 1. Overview

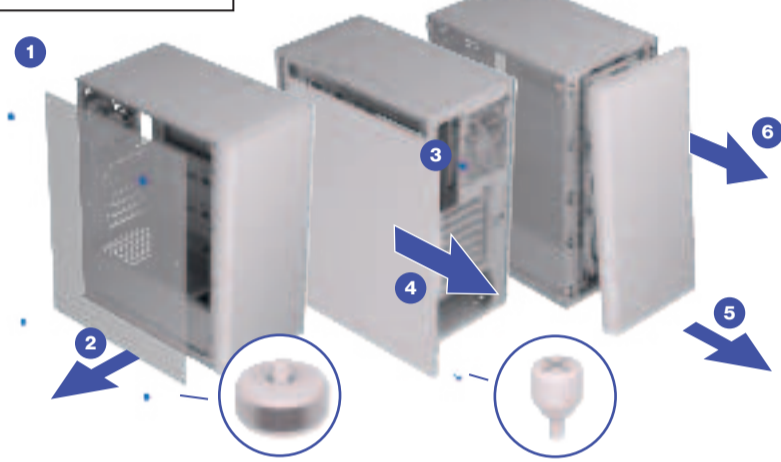


## I/O

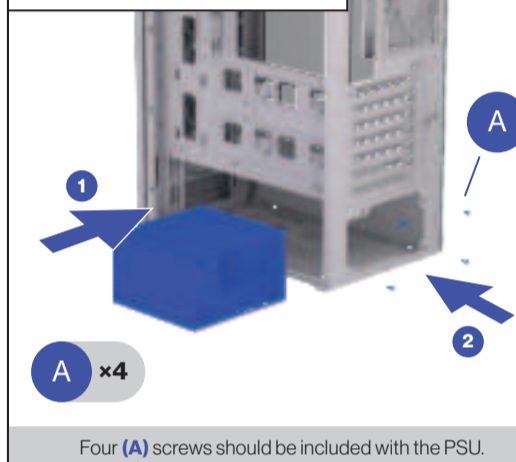
To connect I/O panel of the case to motherboard please use your motherboard manual.



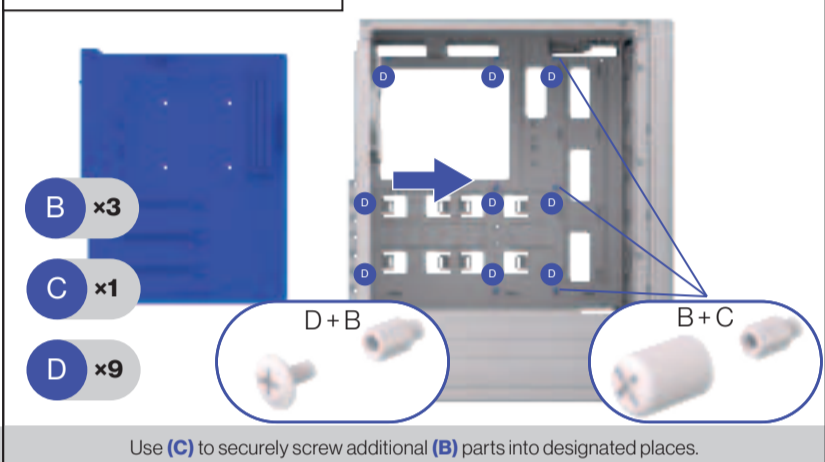
## 2. Panel removal



## 3. Hardware installation



## 4. Hardware installation



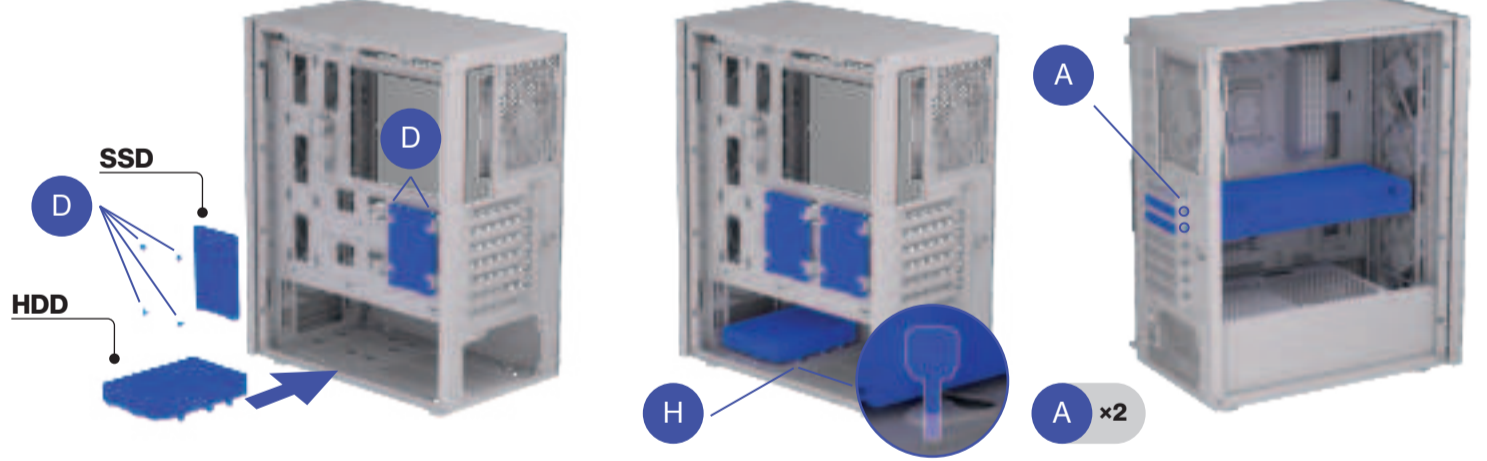
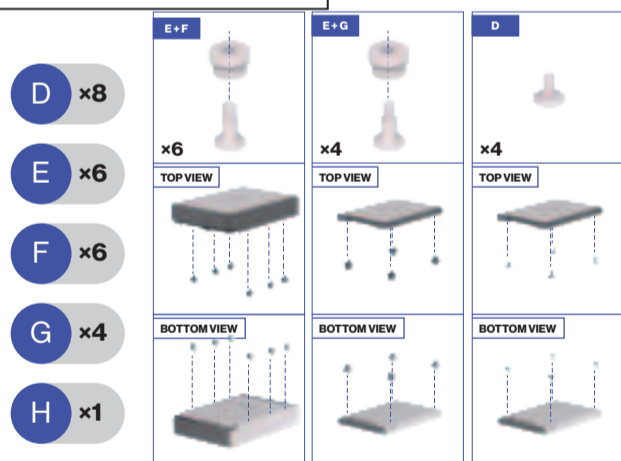
**CUSTOMER SERVICE TELEPHONE:**  
 +48 222920130 +44 3333394929  
 Call charges will apply according to your operator's rates.

**NEED MORE INFORMATION?**  
[ENDORFY.COM/KB/EY2A014](http://ENDORFY.COM/KB/EY2A014)



# Ventum 200 ARGB

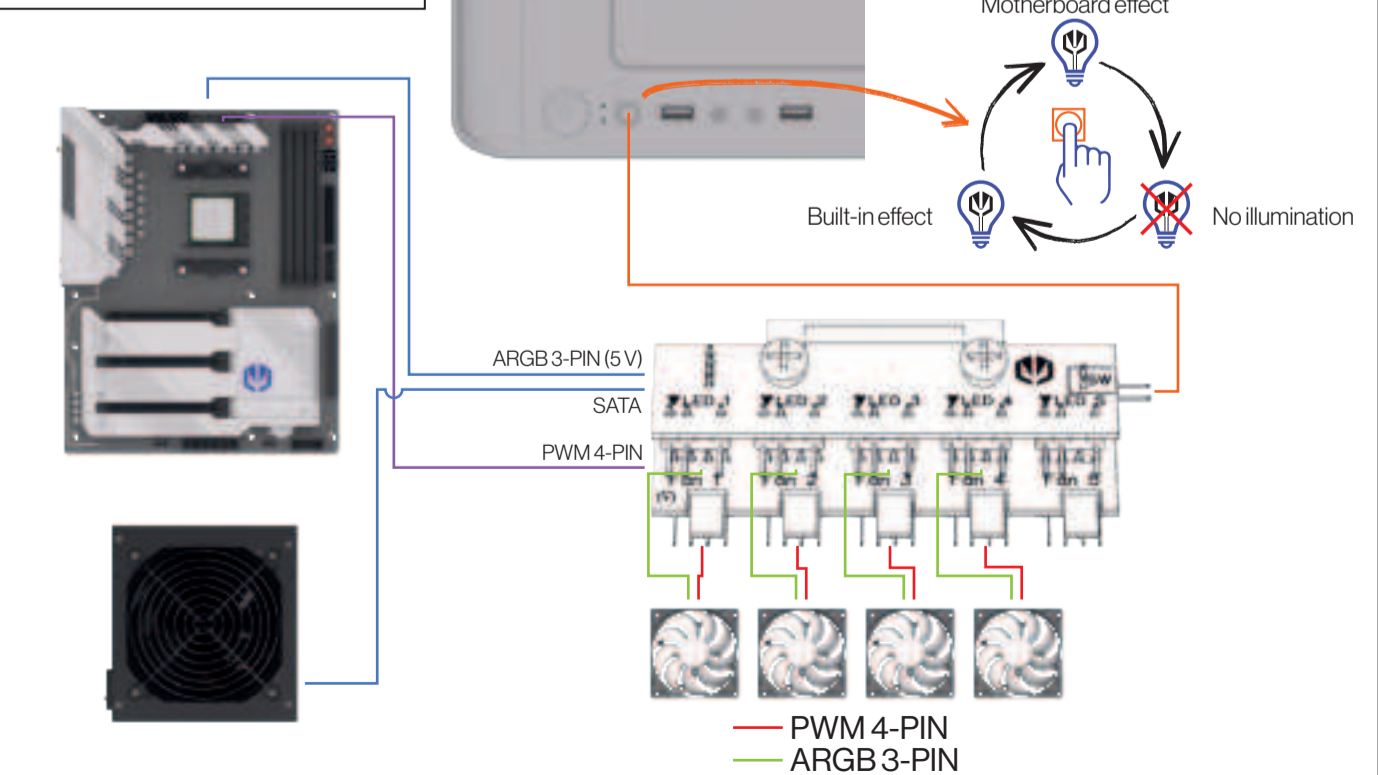
## 5. Hardware installation



## 6. Dust filters



## 7. Illumination and fan connection



**CUSTOMER SERVICE TELEPHONE:**  
 +48 222920130 +44 3333394929  
 Call charges will apply according to your operator's rates.

**NEED MORE INFORMATION?**  
[ENDORFY.COM/KB/EY2A014](http://ENDORFY.COM/KB/EY2A014)



