

■ How to use Anti-reverse lever

**ON** The handle can only turn forward and backward

**OFF** The handle can turn forward and backward

■ Changing handle position from left to right

● Screw in handle style.

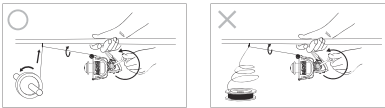
- ①Remove the handle screw cap (\*)
- ②Turn the handle clockwise and detach the handle assembly.
- ③Reassemble in reverse order.
- ④Put on the handle screw cap

● Lock in handle style

- ①Turn the handle screw cap(\*)counter clockwise and remove the handle screw cap
  - ②Remove the handle and place it on the right side. Replace the handle screw cap on the left side
  - ③Tighten the handle screw cap by turning it clockwise.
- ※There are some models that require a handle shaft change when you switch the handle position.

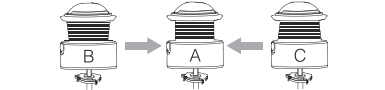
■ Winding line

- ①Attach the reel on rod
- ②Tighten the drag
- ③Tie the line on the spool and then use stickers to secure the line
- ④Turn the handle one time to begin winding the line. Then, turn the line spool vertical (see picture) and put pressure on the line spool\* continue winding under tension until the spool is full



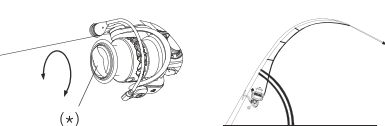
■ How to adjust line shapeon the spool

- Setting upon delivery
- To set to wind more to the back Increase the number of washer(\*) on the spool shaft
- To set to wind more to the front Reduce the number of washer(\*) on the spool shaft



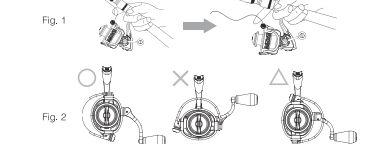
■ Drag tension adjustment

- Adjustment of drag tension allows the spool to rotate and prevent line breakage when a hooked fish pulls hard on the line.
- ①Mount the reel on the rod and pass the line through the guides.
  - ②With the Anti-reverse turned on, pull on the line, as indicated in the diagram, and adjust the tightness of the drag knob(\*)Turning the drag knob clockwise will increase the tension,and reverse to reduce it
  - ③As a general rule, adjust the drag tension so that line begins to feed off the spool just before the breaking point. Moreover, always tighten the drag knob when making a long cast, as the drag could slip and result in injury of hand or fingers on the line.



■ Casting

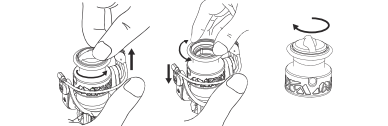
1. Grab the line with your finger. Fig 1
  2. Open the bail at the position which is shown on Fig 2
  3. Swing the rod and cast.
- ※Please tighten the drag enough when you cast. If the drag is too loose, there is a possibility of cutting your finger by the spinning spool.



■ Spool removal & attachment

- Removal Simply turn the drag knob counterclockwise.
- Attachment

Slowly turn the spool while sliding it onto the spool shaft until the spool shaft has passed all the way through the spool,then fasten it by turning the drag knob clockwise.



Precautions Concerning Storage

- After use in a saltwater environment and before storing your reel, remove residual salt and dry thoroughly according to the points noted under Basic Maintenance for Use in Saltwater Environments.
- ①Always remove the reel from the rod before storage.If the reel is rinsed off while mounted on the rod, seawater that has accumulated in the reel seat hood and the reel leg will often remain even after rinsing.
  - ②Rinsing Use a showerhead, etc., under low pressure to rinse with fresh water and wash away salt and dirt adhering to the exterior of the reel. \*Avoid heated water as it may also wash away grease. For the same reason, the reel should not be immersed in water either. Avoid high pressure wash as it will push salt and debris into the reel.
  - ③Drying Avoiding direct sunlight. Let dry in a shaded area after thoroughly draining off all water. \*Exposure to direct sunlight or hot air from a dryer can cause condensation to occur on the interior of the frame.
  - \*Removing the Maintenance Port cap is recommended as an effective measure when draining off water and drying
  - ④Oil & Grease Use Oil and grease correctly as indicated at points illustrated below.

[Oil Injection]

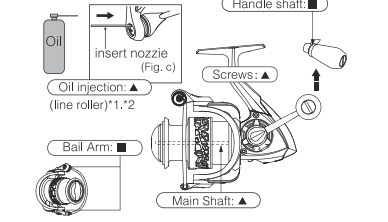
- Perform lubrication carefully in a well-ventilated area as oil and grease particles may spatter or linger in the air. To spray inside the Maintenance port, use a flat-head screwdriver to remove the cap then insert 1-2 drops. We recommend you to spray oil once every 5 times you go fishing or when you have 1 month or more until your next fishing trip.Be sure reattach the Maintenance Port cap once spraying of oil is complete otherwise you may stain your clothing by spilt oil.
- \*Do not spray grease from oil injection too much. Anti-reverse stopper may not work properly.

- Line roller oil injection Use oil or grease spray. Put the nozzle inside the injection and press the button quickly(Fig.c)
- (There are some areas where we don't apply the oil and grease spray)

\*Attention: Take off the spool and cover the line roller when you spray. Oil or grease may spill from the line roller, wipe off the line roller after your spray. Spill oil or grease may spread out of the line roller and stain your clothes.

- Do not put grease inside of the Roller bearing or spray inside the rotor. The anti-reverse may not work properly.

- Points requiring Lubricant



\*The picture is different from actual product.

\*④There are some products which don't have oil injection or Anti-reverse lever.

\*④There are some products where external line roller lubrication is not offered for those products, an additional instruction manual is included in the reel box Please consult the additional instruction manual for maintenance details

③Precautions Concerning Storage

Always remove the reel from the rod before storage. Leaving your reel in an enclosed space (e.g. car trunk or storage compartment on a boat) under extremely hot, humid conditions, may compromise its ability to resist the effects of corrosion. Dry the reel well and keep it in a well-ventilated location.

■ ストッパーレバーの操作方法

通常は、ストッパーレバー ON で使用します。

- ON 逆転止めが作動し、ハンドルは正転方法にかかりません。
- OFF 逆転止めが解除され、ハンドルは正転、逆転どちらの方向にも回ります。

※ストッパーレバーがないモデルもあります。

■ ハンドルの左右付け替え方法

●ねじ込みハンドルの場合

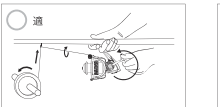
- ①ハンドルスクリューキャップを外します。
  - ②ハンドルを逆転方向に回し取り外します。
  - ③左右を入れ替え、ハンドルを回転方向に回し取り付けます。
  - ④ハンドルスクリューキャップを取り付けます。
- ※左右付け替え時に、ハンドル軸の交換が必要なモデルもあります。

●ねじ込みハンドルで無い場合

- ①ハンドル固定ボルト(スクリューキャップ)を反時計回りに回し外します。
- ②ハンドルを引き抜き左右を入れ替えます。
- ③ハンドル固定ボルトで締め付けて固定します。

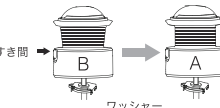
●糸の巻き方

- ①リールを竿に取り付けます。
- ②ドラッグを締め込みます。
- ③元ガイドから糸を通しスプールに結びます。その時、結び目はテープなどで固定します。
- ④図のように、糸が巻かれたボルトをガイドにて、適宜に巻き、糸にテンションをかけながら巻きます。



●糸巻形状の調整方法

- Bの状態からスプール調整ワッシャーを追加するとAの状態に近づきます。
- Cの状態からスプール調整ワッシャーを抜くとAの状態に近づきます。
- なるべくAの状態でご使用をお勧めします。

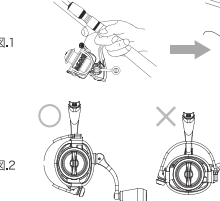


■ドラッグの調整方法

- ドラッグとは、その強弱を調節することにより、急激な魚の引きに対し、スプールが逆転して糸切れを防ぐ機構です。
- ①リールを使用するロッドに取り付け、ラインをロッドのガイドに通します。
  - ②ドラッグノブを右に回すとドラッグ力が強くなり、左に回すと弱くなります。
  - ③ストッパー ON の状態で図のように糸を引き出しながらドラッグの締め付けを調整します。

■キャストング方法

- ①図1のように人差し指に糸を引っ掛けます。
  - ②図2の位置でベールを起こします。
  - ③竿を振りかぶり、キャストングをしてください。
- ※ドラッグの締め付けが弱すぎるとスプールが逆転し糸で指を切る恐れがあります。



■ スプールの着脱方法

- 取り外し方 ドラッグノブを反時計回りに外れるまで回してください。
- 取り付け方 スプールを左右に押し込みながら、完全に底当たりするまで押し込んでください。ドラッグノブを時計回りに回すと締め付けことができます。



お手入れ方法

特に海水、汽水域でリールをご使用された後は、錆や塩分の固着によるトラブルを防止するためにも、以下の要領で釣り後にメンテナンスを行うことを進めます。

①必ず竿から外してください。

②水洗いしてください。

使用後はシャワーでの洗浄が可能です。まずドラッグ内に水が入らないように、ドラッグを締め込んでください。次に、シャワーなどの真水で、リールに付着した塩分、砂、汚れを水洗いしてください。(温水はおやめてください。リール本体を水浸させないでください。)

③乾燥させてください。

しっかりと水を切った後、直射日光を避け、陰干してください。その際、ドラッグを緩め、オイルインジェクションの注油口キャップを外すと効果的です。

④注油してください。

オイルとグリスは下図を参考にしてください、それぞれ間違えないように噴霧してください。

●オイルインジェクション(ボディ、ラインローラーについて)

オイルインジェクションからオイルまたはグリスを噴霧する頻度は、水洗い・乾燥後および、釣り 5 回につき 1 度、または、次の釣行までの期間が1ヶ月以上ある場合に 1 度を目安にしてください。又、1 度の噴霧(注油)時間は約 1 秒です。注油後、注油キャップは必ずお締めください。

●ラインローラー-オイルインジェクションへの注油

ラインローラー-オイルインジェクションよりグリススプレーのノズルを奥まで差し込み、ワンプッシュしてください。(下図c)

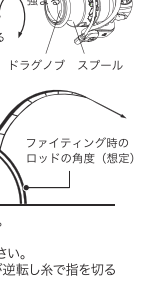
※注油上のご注意

- ローラークラッチ部に絶対にグリスを塗布しないでください。ストッパー逆転の原因となります。

- ローラー-内部にはグリススプレーを噴射しないでください。ストッパーやブレーキが利きなくなる原因となります。

- オイルインジェクションからの大量のグリススプレーはお避け下さい。ストッパーが効かなくなることがあります。

- 噴霧したオイルまたはグリスがラインローラー一部の隙間より噴き出る可能性がありますので、リールからスプールを外しラインローラー近辺をきれいな布で覆ったうえで、スプレーしてください。また付着したオイルまたはグリスがリールの回転により衣服などへ飛び散るおそれがありますので、スプレー後はきれいな布などでラインローラー表面を拭き取ってください。



※1-一部ラインローラーへの注油を推奨していないモデルもあります。そのモデルは別紙の注意下に記載がありますので、こちらを参考にしてください。

⑤保管上のご注意

保管の際は必ず竿から取り外してください。また、なるべく乾燥した冷暗所に保管してください。濡れたまま湿度の高い状態で密封された空間(自動車のトランク、ダッシュボードなど)に長時間放置されますと腐食を起こす可能性があります。

# CARBON X

## Product manual

More after-sales policies: WWW.PISCIFUN.COM E-mail: CS@PISCIFUN.COM

### Return & Warranty Policy

Dear Valued Customer,  
Thank you for choosing our fishing reel products! To provide you with the best experience and protect your rights, we've outlined the following after-sales service policy. Please read and retain this policy for future reference.

- Warranty Period
- Free Return/Exchange: Within 1 month (unused items or due to quality issues only).
  - Free Warranty: Within 1 year.
  - Paid Warranty: Available up to 3 years.
- The warranty covers defects caused by manufacturing but excludes damage from improper use, accidents, or human error. Retain your purchase receipt (order screenshot, date, and platform details) as valid proof for service.

- After-Sales Service Process
- 1.Contact Customer Service: Reach us through our official website, hotline, or online chat. Provide a screenshot of your purchase order and order number.
  - 2.Diagnosis: Based on your description, we'll conduct an initial diagnosis. If needed, the product may need to be returned for detailed inspection.
  - 3.Repair Confirmation: After diagnosis, we'll inform you of the repair plan and costs (if applicable).
  - 4.Repair Implementation: Upon your approval, we'll complete the repair promptly and notify you for pickup or arrange for return shipping.
  - 5.Service Tracking: Stay updated on the repair progress with our tracking service.

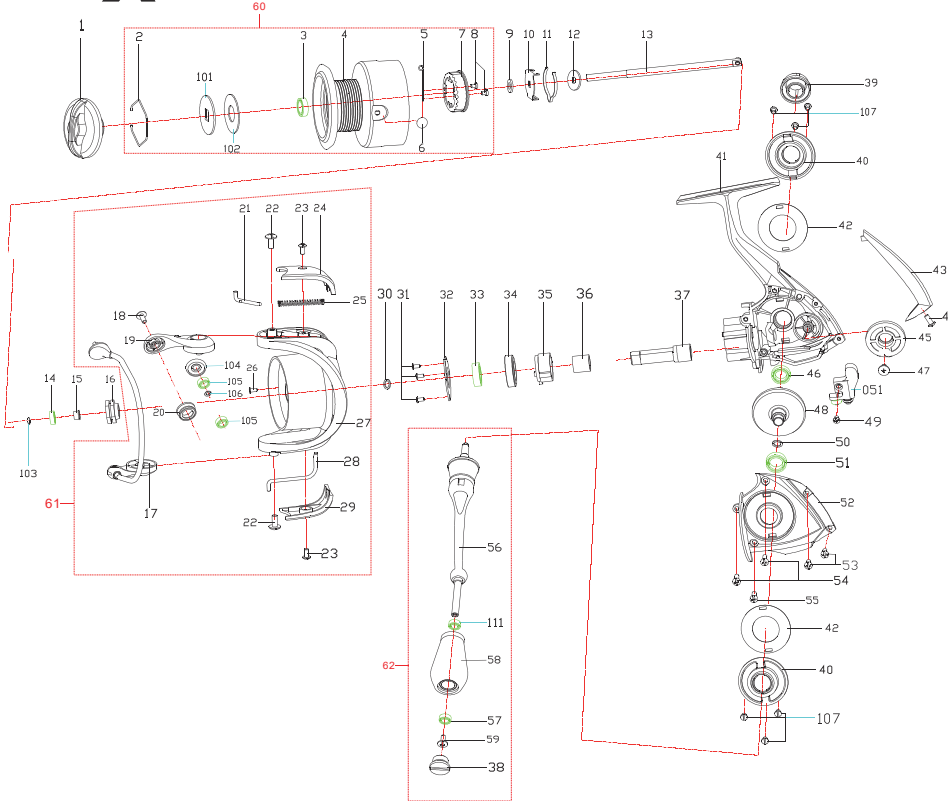
We are committed to providing professional, high-quality after-sales support and ensuring your satisfaction.

Order Cancellations: Orders can be canceled within 24 hours of placement. We will do our best to intercept shipments if possible.

Your satisfaction drives us to continuously improve. Thank you for choosing Piscifun.

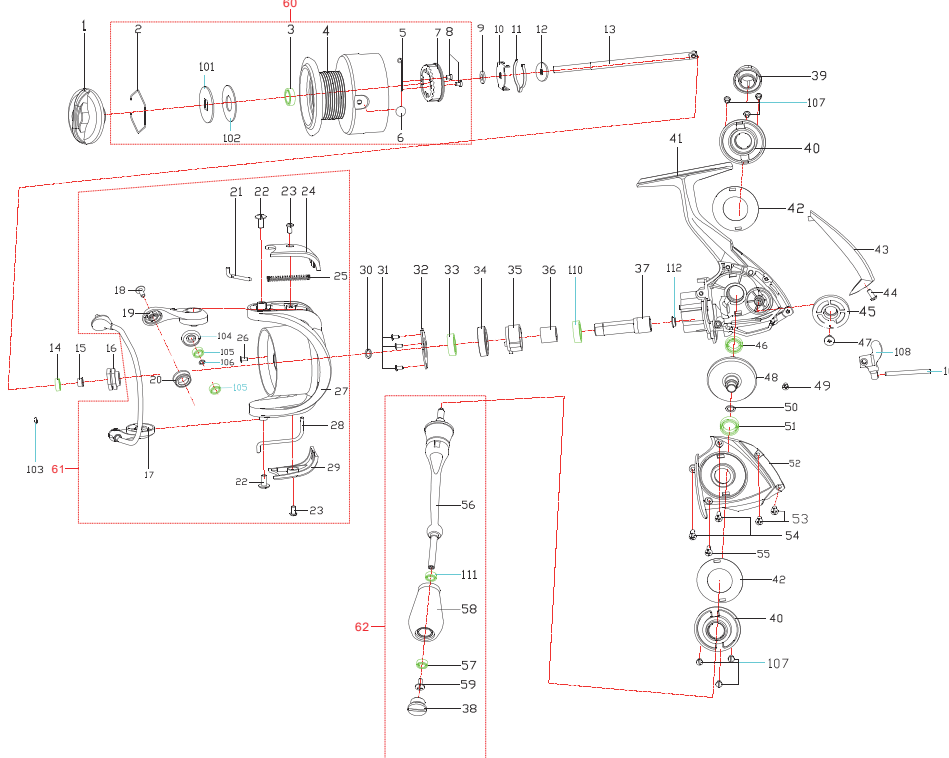
# CARBON X

500



# CARBON X

1000



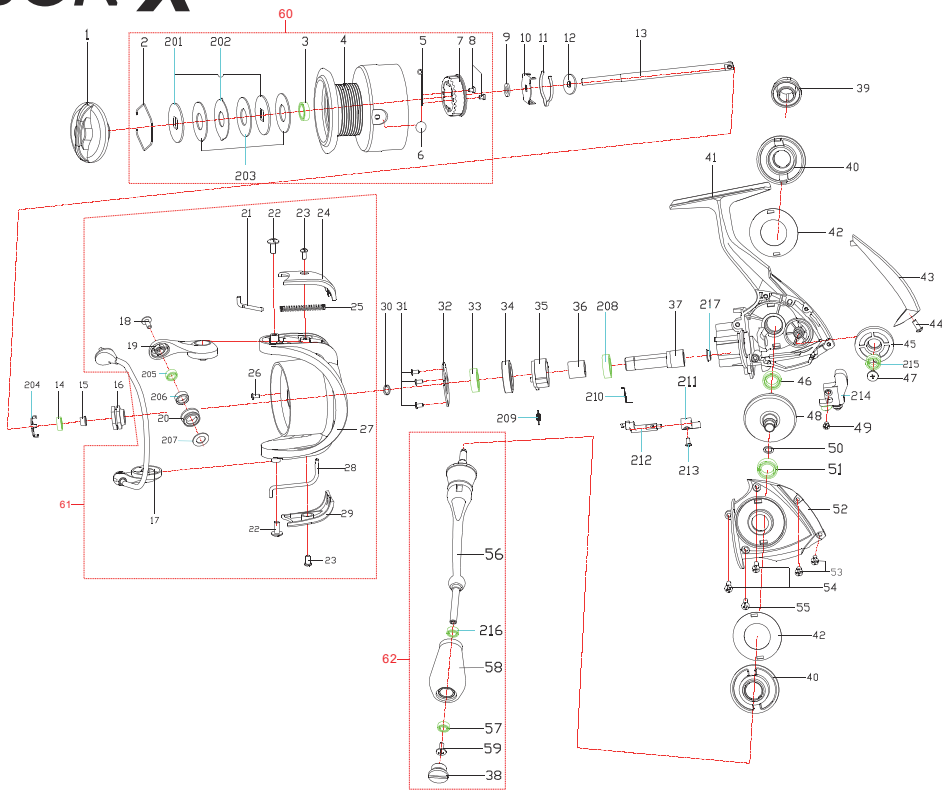
NO.	PartNumber	Name	NO.	PartNumber	Name	NO.	PartNumber	Name
1	CS0001	Drag knob assy	31	CS0031	Screw	61	CS0061	Rotor Assy
2	CS0002	Drag washer retainer	32	CS0032	Roller cover	62	CS0062	Handle Group
3	CS0003	Ball bearing	33	CS0033	Ball bearing	101	CS0063	Key washer
4	CS0004	Spool	34	CS0034	Roller room	102	CS0064	Drag washer
5	CS0005	Line clip spring	35	CS0035	Roller	103	CS0065	Ball bearing retainer
6	CS0006	Line clip	36	CS0036	Roller inner bushing	104	CS0066	Line roller washer
7	CS0007	Click plate	37	CS0037	Pinion gear	105	CS0067	Ball bearing
8	CS0008	Screw	38	CS0038	Handle knob cap	106	CS0068	Line roller washer
9	CS0009	Adjusting washer-A	39	CS0039	Handle cap	107	CS0069	Screw
10	CS0010	Click leaf spring holder	40	CS0040	Decorating ring	111	CS0070	Ball bearing
11	CS0011	Click leaf spring	41	CS0041	Body	051	CS0071	Slider assy
12	CS0012	Shaft drag adapter	42	CS0042	Carbon ring			
13	CS0013	Main shaft	43	CS0043	Cap			
14	CS0014	Ball bearing	44	CS0044	Screw			
15	CS0015	Bushing	45	CS0045	Oscillation gear			
16	CS0016	Rotor nut	46	CS0046	Ball bearing			
17	CS0017	Bail assy	47	CS0047	Screw			
18	CS0018	Srew	48	CS0048	Drive gear assy			
19	CS0019	Bail arm	49	CS0049	Screw			
20	CS0020	Line roller	50	CS0050	Adjusting washer			
21	CS0021	Bail spring shaft	51	CS0051	Ball bearing			
22	CS0022	Screw	52	CS0052	Body cover			
23	CS0023	Screw	53	CS0053	Screw			
24	CS0024	Rotor cover-A	54	CS0054	Screw			
25	CS0025	Bail spring	55	CS0055	Screw			
26	CS0026	Screw	56	CS0056	Handle assy			
27	CS0027	Rotor	57	CS0057	Ball bearing			
28	CS0028	Kick level	58	CS0058	Handle knob assy			
29	CS0029	Rotor cover-B	59	CS0059	Screw			
30	CS0030	Adjusting washer-B	60	CS0060	Spool Assy			

NO.	PartNumber	Name	NO.	PartNumber	Name	NO.	PartNumber	Name
1	CS0001	Drag knob assy	31	CS0031	Screw	61	CS0087	Rotor Assy
2	CS0002	Drag washer retainer	32	CS0032	Roller cover	62	CS0088	Handle Group
3	CS0003	Ball bearing	33	CS0033	Ball bearing	101	CS0063	Key washer
4	CS0072	Spool	34	CS0034	Roller room	102	CS0064	Drag washer
5	CS0005	Line clip spring	35	CS0035	Roller	103	CS0065	Ball bearing retainer
6	CS0006	Line clip	36	CS0036	Roller inner bushing	104	CS0066	Line roller washer
7	CS0007	Click plate	37	CS0079	Pinion gear	105	CS0067	Ball bearing
8	CS0008	Screw	38	CS0038	Handle knob cap	106	CS0068	Line roller washer
9	CS0009	Adjusting washer-A	39	CS0039	Handle cap	107	CS0069	Screw
10	CS0010	Click leaf spring holder	40	CS0040	Decorating ring	108	CS0089	Slider
11	CS0011	Click leaf spring	41	CS0080	Body	109	CS0090	Pin
12	CS0012	Shaft drag adapter	42	CS0042	Carbon ring	110	CS0091	Ball bearing
13	CS0073	Main shaft	43	CS0081	Cap	111	CS0070	Ball bearing
14	CS0014	Ball bearing	44	CS0044	Screw	112	CS0092	Pinion gear bushing-A
15	CS0015	Bushing	45	CS0082	Oscillation gear			
16	CS0016	Rotor nut	46	CS0046	Ball bearing			
17	CS0074	Bail assy	47	CS0047	Screw			
18	CS0018	Srew	48	CS0048	Drive gear assy			
19	CS0019	Bail arm	49	CS0049	Screw			
20	CS0020	Line roller	50	CS0050	Adjusting washer			
21	CS0021	Bail spring shaft	51	CS0051	Ball bearing			
22	CS0022	Screw	52	CS0083	Body cover			
23	CS0023	Screw	53	CS0053	Screw			
24	CS0075	Rotor cover-A	54	CS0054	Screw			
25	CS0025	Bail spring	55	CS0084	Screw			
26	CS0026	Screw	56	CS0085	Handle assy			
27	CS0076	Rotor	57	CS0057	Ball bearing			
28	CS0077	Kick level	58	CS0058	Handle knob assy			
29	CS0078	Rotor cover-B	59	CS0059	Screw			
30	CS0030	Adjusting washer-B	60	CS0086	Spool Assy			



# CARBON X

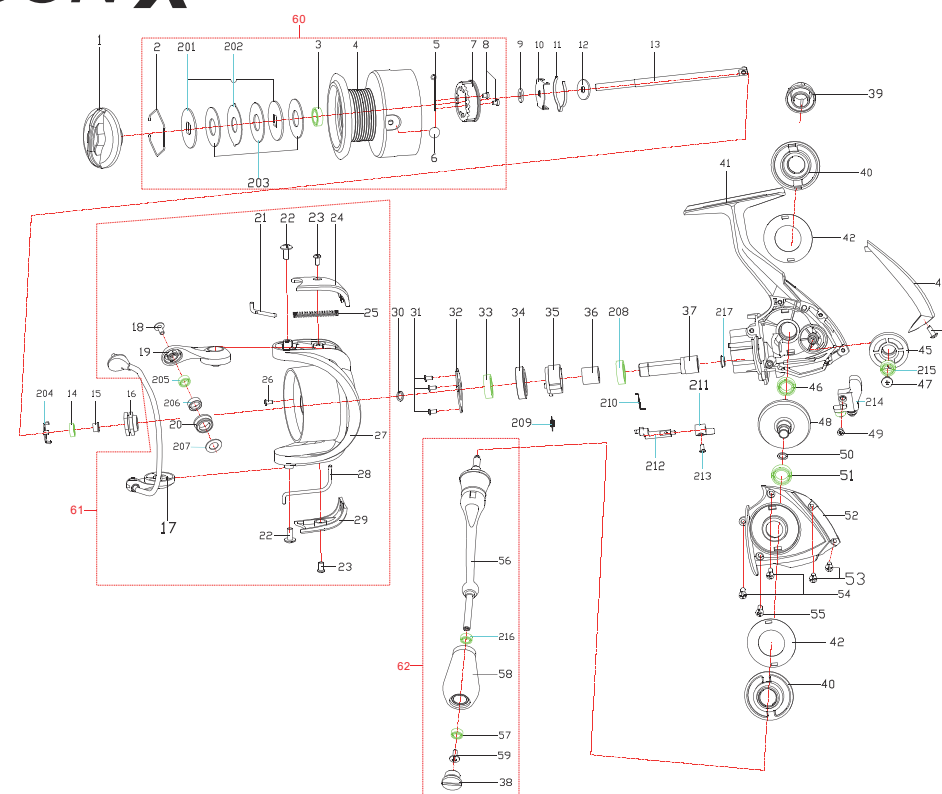
2000



NO.	PartNumber	Name	NO.	PartNumber	Name	NO.	PartNumber	Name
1	CS0093	Drag knob assy	31	CS0116	Screw	61	CS0136	Rotor Assy
2	CS0002	Drag washer rainer	32	CS0117	Roller cover	62	CS0137	Handle Group
3	CS0094	Ball bearing	33	CS0118	Ball bearing	201	CS0138	Key washer
4	CS0095	Spool	34	CS0119	Roller room	202	CS0139	Eared washer
5	CS0096	Line clip spring	35	CS0120	Roller	203	CS0140	Drag washer
6	CS0006	Line clip	36	CS0121	Roller inner bushing	204	CS0141	Ball bearing retainer
7	CS0007	Click plate	37	CS0122	Pinion gear	205	CS0142	Ball bearing
8	CS0008	Screw	38	CS0123	Handle knob cap	206	CS0143	Line roller bushing
9	CS0097	Adjusting washer-A	39	CS0039	Handle cap	207	CS0144	Line roller washer
10	CS0098	Click leaf spring holder	40	CS0124	Decorating ring	208	CS0145	Ball bearing
11	CS0011	Click leaf spring	41	CS0125	Body	209	CS0146	Spring
12	CS0099	Shaft drag adapter	42	CS0126	Carbon ring	210	CS0147	Anti-reverse level spring
13	CS0100	Main shaft	43	CS0127	Cap	211	CS0148	Anti-reverse level
14	CS0101	Ball bearing	44	CS0044	Screw	212	CS0149	Anti-reverse shaft
15	CS0102	Bushing	45	CS0128	Oscillation gear	213	CS0150	Screw
16	CS0103	Rotor nut	46	CS0046	Ball bearing	214	CS0151	Slider assy
17	CS0104	Bail assy	47	CS0047	Screw	215	CS0152	Ball bearing
18	CS0018	Srew	48	CS0129	Drive gear assy	216	CS0153	Bushing
19	CS0105	Bail arm	49	CS0130	Screw	217	CS0154	Pinion gear bushing-A
20	CS0106	Line roller	50	CS0050	Adjusting washer			
21	CS0107	Bail spring shaft	51	CS0051	Ball bearing			
22	CS0108	Screw	52	CS0131	Body cover			
23	CS0109	Screw	53	CS0053	Screw			
24	CS0110	Rotor cover-A	54	CS0054	Screw			
25	CS0111	Bail spring	55	CS0084	Screw			
26	CS0026	Screw	56	CS0132	Handle assy			
27	CS0112	Rotor	57	CS0057	Ball bearing			
28	CS0113	Kick level	58	CS0133	Handle knob assy			
29	CS0114	Rotor cover-B	59	CS0134	Screw			
30	CS0115	Adjusting washer-B	60	CS0135	Spool Assy			

# CARBON X

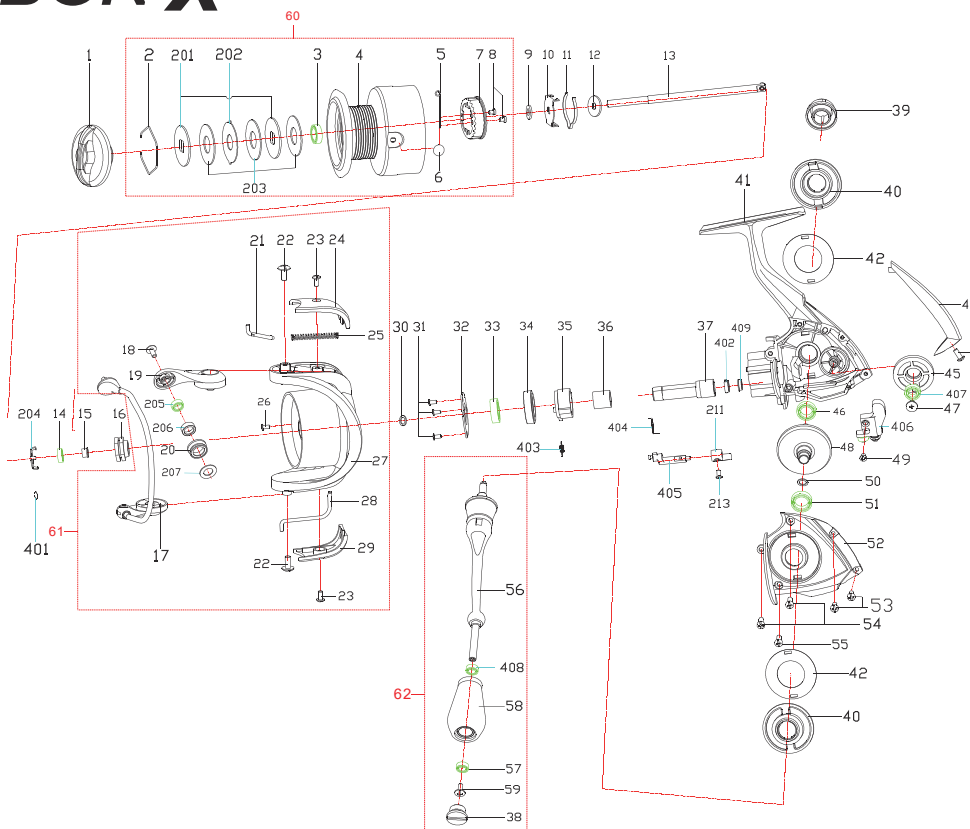
3000



NO.	PartNumber	Name	NO.	PartNumber	Name	NO.	PartNumber	Name
1	CS0093	Drag knob assy	31	CS0116	Screw	61	CS0160	Rotor Assy
2	CS0002	Drag washer rainer	32	CS0117	Roller cover	62	CS0161	Handle Group
3	CS0094	Ball bearing	33	CS0118	Ball bearing	201	CS0138	Key washer
4	CS0155	Spool	34	CS0119	Roller room	202	CS0139	Eared washer
5	CS0096	Line clip spring	35	CS0120	Roller	203	CS0140	Drag washer
6	CS0006	Line clip	36	CS0121	Roller inner bushing	204	CS0141	Ball bearing retainer
7	CS0007	Click plate	37	CS0122	Pinion gear	205	CS0142	Ball bearing
8	CS0008	Screw	38	CS0123	Handle knob cap	206	CS0143	Line roller bushing
9	CS0097	Adjusting washer-A	39	CS0039	Handle cap	207	CS0144	Line roller washer
10	CS0098	Click leaf spring holder	40	CS0124	Decorating ring	208	CS0145	Ball bearing
11	CS0011	Click leaf spring	41	CS0125	Body	209	CS0146	Spring
12	CS0099	Shaft drag adapter	42	CS0126	Carbon ring	210	CS0147	Anti-reverse level spring
13	CS0100	Main shaft	43	CS0127	Cap	211	CS0148	Anti-reverse level
14	CS0101	Ball bearing	44	CS0044	Screw	212	CS0149	Anti-reverse shaft
15	CS0102	Bushing	45	CS0128	Oscillation gear	213	CS0150	Screw
16	CS0103	Rotor nut	46	CS0046	Ball bearing	214	CS0151	Slider assy
17	CS0156	Bail assy	47	CS0047	Screw	215	CS0152	Ball bearing
18	CS0018	Srew	48	CS0129	Drive gear assy	216	CS0153	Bushing
19	CS0105	Bail arm	49	CS0130	Screw	217	CS0154	Pinion gear bushing-A
20	CS0106	Line roller	50	CS0050	Adjusting washer			
21	CS0107	Bail spring shaft	51	CS0051	Ball bearing			
22	CS0108	Screw	52	CS0131	Body cover			
23	CS0109	Screw	53	CS0053	Screw			
24	CS0110	Rotor cover-A	54	CS0054	Screw			
25	CS0111	Bail spring	55	CS0084	Screw			
26	CS0026	Screw	56	CS0132	Handle assy			
27	CS0157	Rotor	57	CS0057	Ball bearing			
28	CS0158	Kick level	58	CS0133	Handle knob assy			
29	CS0114	Rotor cover-B	59	CS0134	Screw			
30	CS0115	Adjusting washer-B	60	CS0159	Spool Assy			

# CARBON X

4000



NO.	PartNumber	Name	NO.	PartNumber	Name	NO.	PartNumber	Name
1	CS0162	Drag knob assy	31	CS0116	Screw	61	CS0182	Rotor Assy
2	CS0002	Drag washer rainer	32	CS0117	Roller cover	62	CS0183	Handle Group
3	CS0094	Ball bearing	33	CS0118	Ball bearing	201	CS0138	Key washer
4	CS0163	Spool	34	CS0119	Roller room	202	CS0139	Eared washer
5	CS0096	Line clip spring	35	CS0173	Roller	203	CS0140	Drag washer
6	CS0006	Line clip	36	CS0174	Roller inner bushing	204	CS0141	Ball bearing retainer
7	CS0007	Click plate	37	CS0175	Pinion gear	205	CS0142	Ball bearing
8	CS0008	Screw	38	CS0123	Handle knob cap	206	CS0143	Line roller bushing
9	CS0097	Adjusting washer-A	39	CS0039	Handle cap	207	CS0144	Line roller washer
10	CS0098	Click leaf spring holder	40	CS0124	Decorating ring	211	CS0148	Anti-reverse level
11	CS0011	Click leaf spring	41	CS0176	Body	213	CS0150	Screw
12	CS0099	Shaft drag adapter	42	CS0126	Carbon ring	401	CS0184	Ball bearing retainer
13	CS0164	Main shaft	43	CS0177	Cap	402	CS0185	Pinion gear bushing-B
14	CS0101	Ball bearing	44	CS0178	Screw	403	CS0186	Spring
15	CS0102	Bushing	45	CS0128	Oscillation gear	404	CS0187	Anti-reverse level spring
16	CS0165	Rotor nut	46	CS0046	Ball bearing	405	CS0188	Anti-reverse shaft
17	CS0166	Bail assy	47	CS0179	Screw	406	CS0189	Slider assy
18	CS0018	Srew	48	CS0129	Drive gear assy	407	CS0190	Ball bearing
19	CS0167	Bail arm	49	CS0130	Screw	408	CS0191	Ball bearing
20	CS0106	Line roller	50	CS0050	Adjusting washer	409	CS0192	Pinion gear bushing-A
21	CS0107	Bail spring shaft	51	CS0051	Ball bearing			
22	CS0108	Screw	52	CS0180	Body cover			
23	CS0109	Screw	53	CS0053	Screw			
24	CS0168	Rotor cover-A	54	CS0054	Screw			
25	CS0169	Bail spring	55	CS0084	Screw			
26	CS0026	Screw	56	CS0132	Handle assy			
27	CS0170	Rotor	57	CS0057	Ball bearing			
28	CS0171	Kick level	58	CS0133	Handle knob assy			
29	CS0172	Rotor cover-B	59	CS0134	Screw			
30	CS0115	Adjusting washer-B	60	CS0181	Spool Assy			