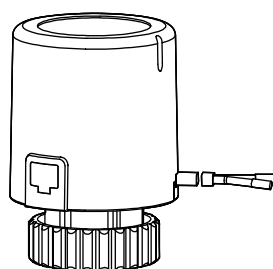


CAUTION! Do not use if cable is defective.

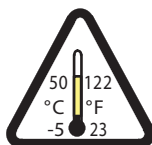
- Disconnect the power supply from any defective appliances.
- Factory setting is (NC) Normally Closed
- Guidelines for the electrician; Level of contamination 2; As per EN60730
- When changing from normally closed to normally open, live components are exposed. Therefore, disconnect the power when changing.



1



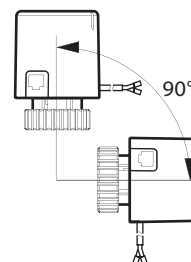
Class II
EN 61000-4-5



2

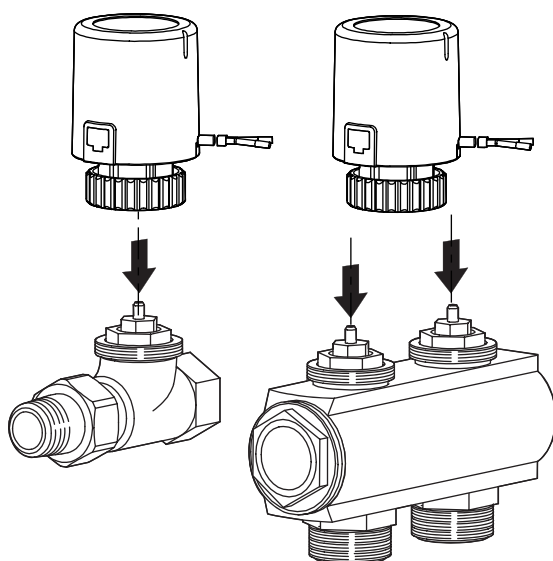


IP 44
EN60529

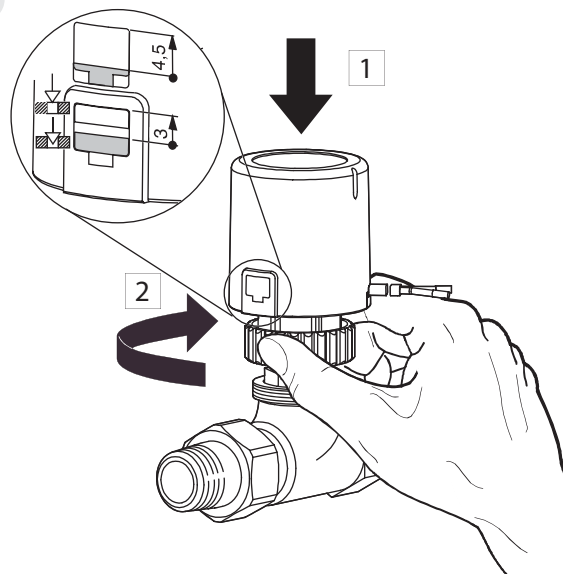


IP 42
EN60529

3

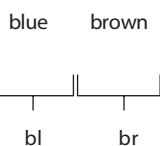
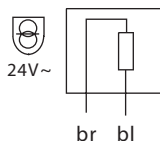


4



5

TA230 - 230Vac
TA24 - 24Vac



Voltage
Running time
Stroke
Spring pressure
Power consumption
Inrush current

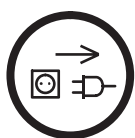
TA230

TA24

230 V~
3,5 min.
3,5 mm
125 N
2,5 W
<550 mA
for max. 100ms

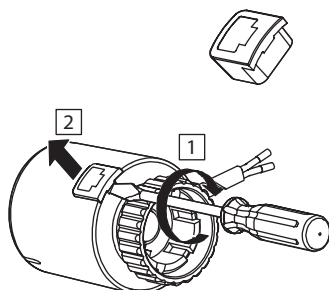
24 V~
4,5 min.
3,5 mm
125 N
3 W
<300 mA
for max. 2min.

6

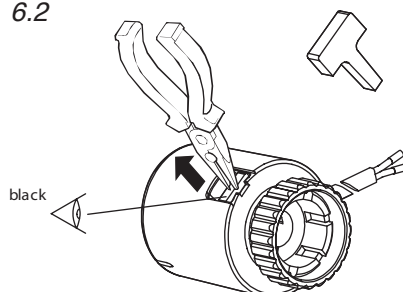


To set to (NO) Normally Open

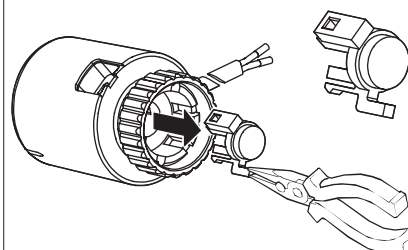
6.1



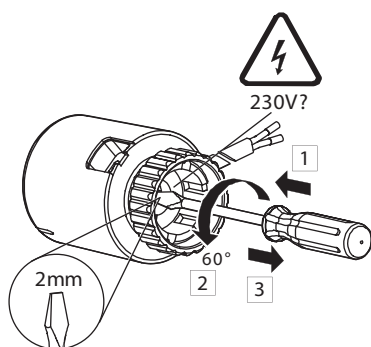
6.2



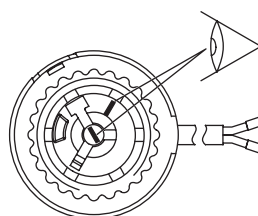
6.3



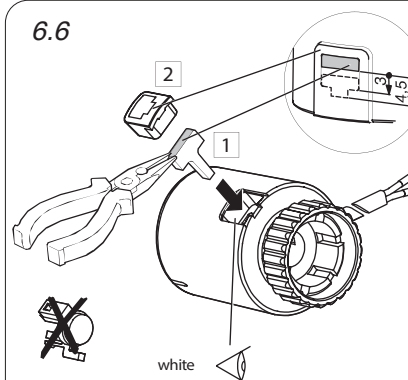
6.4



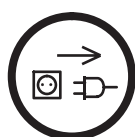
6.5



6.6

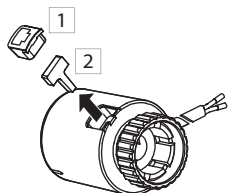


7

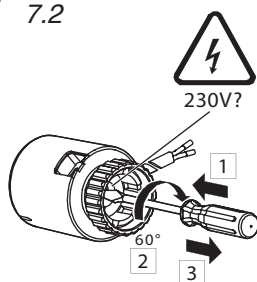


To reset to (NC) Normally Closed

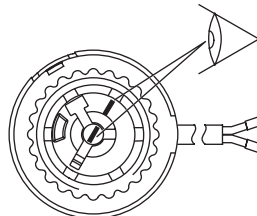
7.1



7.2



7.3



7.4

