



RainPoint[®] Smart
More Than Water Saving

USER MANUAL

WiFi WATER LEAKAGE SENSOR

Model No. HCS016ARF

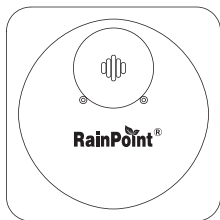


Welcome to the **RAINPOINT** family! Please read the manual before using to learn about the features and functions.

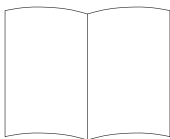
Contents

1.	Contents in the box	01
2.	Introduction	02
	2.1 Product Overview	02
	2.2 Specification	03
3.	Connection and Installation	03
	3.1 Leakage Detector Installation	03
	3.2 Leakage Detector Connection	04
4.	App Features and Functions	09
	4.1 Device Home Page	09
	4.2 Basic Setting	10
	4.3 Share With Family Members	11
5.	Troubleshooting	15
6.	Precautions	16
7.	Warranty Policy	16
8.	FCC Statement	17
9.	Customer Support	19

1. Contents in the box



1



2

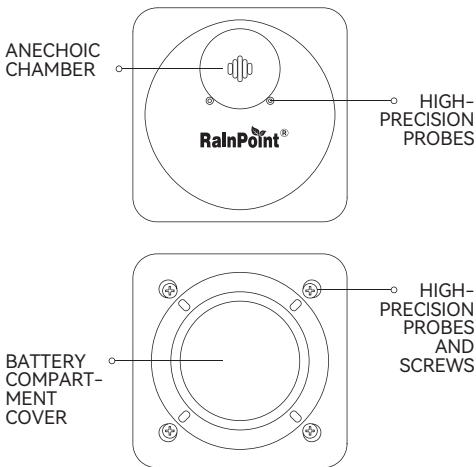


3

1. **HCS016ARF WiFi WATER LEAKAGE SENSOR**
2. **User Manual**
3. **Warranty Card**

2. Introduction

2.1 Product Overview



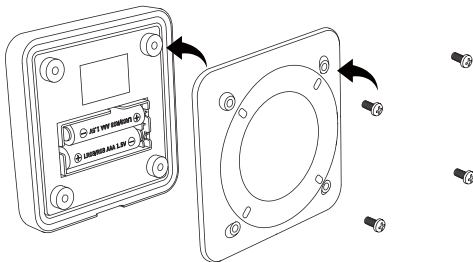
2.2 Specification

- **Waterproof Level:** IP66
- Up to 197ft (60m) depending on obstacle between hub and detector.
- Powered by 2* AAA batteries (Not included).
- **Alarm volume:** 100dB

3. Connection And Installation

3.1 Leakage Detector Installation

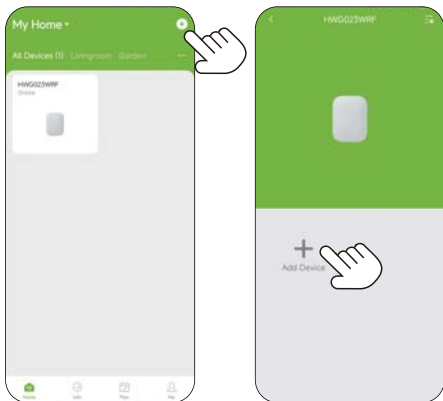
Inset the batteries.





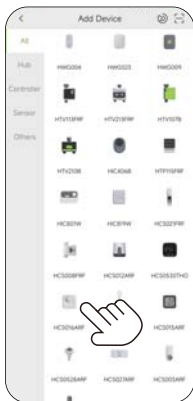
Tips: Use the tool to unscrew the four screws of the back cover.

3.2 Leakage Detector Connection

1. On the APP, select the **+** button on the top right corner of the APP home page to add device, or you can go to the hub's home page and use **"Sub-devices"** to add devices.



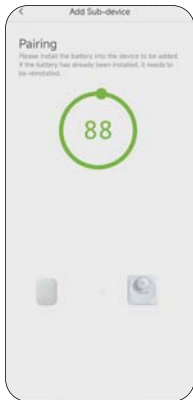
2. Enter the **"Add Device"** page, click on , or click on  in the upper right corner, scan the QR code in bottom of the manual or on the device to connect to network.



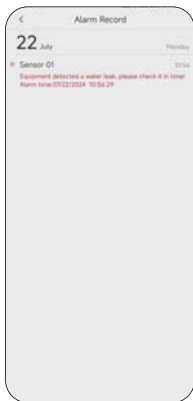
3. Select "**Next**" on the APP to start searching device.



4. Keep the device and the hub close to each other so they can connect automatically.

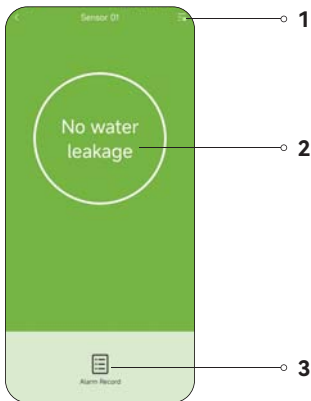


5. When the Detector detects water leakage, the Detector will alarm and the APP will remind you. And you can check the alarm record.




4. APP Features And Functions

4.1 Device Home Page



1. **Settings:** Basic Settings of water Flood sensor.
2. **Device status display**
3. **Alarm Record:** You can view alarm histories.

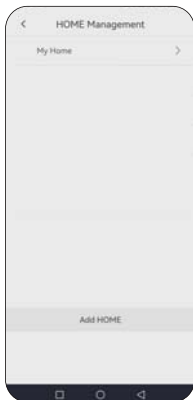
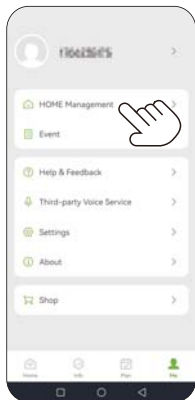
4.2 Basic Setting

Find the icon  on the top right corner of the APP home page to **"Settings"** page. In the basic settings, you can check and manage the device information, such as name, interface and description.

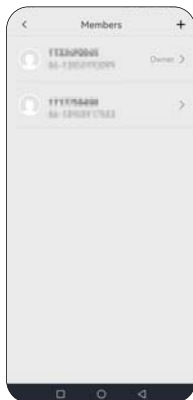
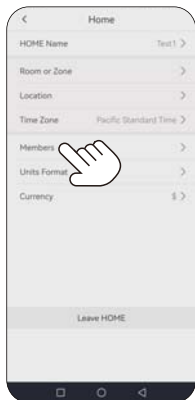


4.3 Share With Family Members

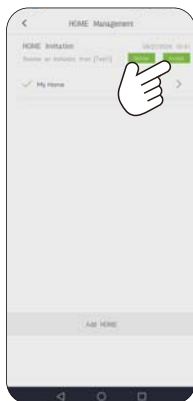
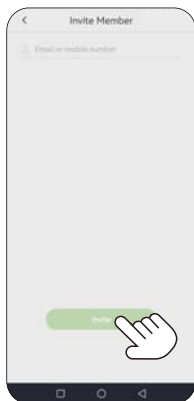
1. Select on the **"Me"** page at the bottom right, enter into **"HOME Management"** . And then Select the group you set up earlier.



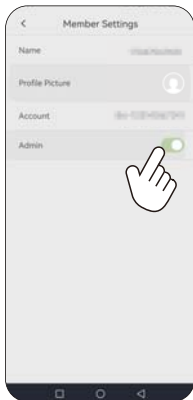
2. Tap on **"Members"** and press **+** on the top right corner.



3. Enter the email or mobile number of the invited member (the member need to complete the account registration in the APP on his mobile phone). Then select **"Invite"** and tap **"Accept"** in the invited phone app.



4. On the "**Members**" page of the owner APP, select the member you want to adjust, and then tap "**Admin**" to adjust the member's permission.



5. Troubleshooting

Problem	Solution may help
The Device Low sound or cannot emit an alarm sound.	<ul style="list-style-type: none">• Please check whether the device has power, do not mix old and new batteries.• Replace the battery.
Equipment water intake.	Check whether the screws on the back of the battery compartment cover are tightened after the battery is installed.
If you need more help about the product or anything from us, please contact us by Email: support@rainpointonline.com	

6. Precautions

1. Please make sure to use 2.4GHz band WiFi to connect to this product.
2. Do not mix old and new batteries or different types of batteries.
3. Please place the Smart Leakage Detector horizontally to avoid inaccurate readings.

7. Warranty Policy

RainPoint provides a 1-year limited warranty on this product against manufacturing defects in materials and workmanship.

8. FCC Statement

(FCC ID: 2AWDBHCS016ARF)

This device complies with Part 15 of the FCC Rules.

Operation is subject to the following two conditions:

1. This device may not cause harmful interference.
2. This device must accept any interference received, including interference that may cause undesired operation.

FCC Warning: Any changes or modifications not expressly approved by the party responsible for compliance could void the user's authority to operate this equipment.

Note: This equipment has been tested and found to comply with the limits for a Class B digital device, pursuant to Part 15 of the FCC Rules. These limits are designed to provide reasonable protection against harmful interference in a residential installation. This equipment generates, uses, and can radiate radio frequency energy, if not installed and used in accordance with the instructions, may cause harmful interference to radio communications. However, there is no guarantee that interference will not occur in a particular installation. If this equipment does cause harmful interference to radio or television reception, which can be determined by turning the equipment off and on, the user is encouraged to try to correct the

interference by one of the following measures:

- Reorient or relocate the receiving antenna.
- Increase the separation between the equipment and the receiver.
- Connect the equipment into an outlet on a circuit different from that to which the receiver is connected.
- Consult the dealer or an experienced radio/TV technician for help.

Note: The manufacturer is not responsible for any radio or TV interference caused by unauthorized modifications to this equipment. Such modifications could void the user's authority to operate the equipment.

9. Customer Support

If you find it difficult to set up and want to watch the setting tutorial video, please subscribe to our channel RainPoint on YouTube.



Or scan the QR code to visit the RainPoint channel on YouTube quickly.

If the app and the user manual don't have what you're looking for, and need some help about Rainpoint, please contact us by

LOT NO.: XXXXXX (on the back of the device)



Made in China



Not included



Points de collecte sur www.quefairedemesdechets.fr
Privilégiez la réparation ou le don de votre appareil !

Need Help ?

Scan the QR code for more help.



or Email:

support@rainpointonline.com