



ZKTeco

Marketing Guide SpeedFace V3L Lite

Robust Outdoor Standalone
Access Control Terminal



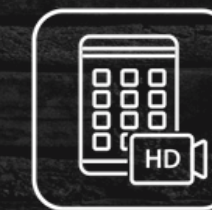
Facial
Authentication



RFID



IP65 Dust &
Waterproof



HD Video
Door Phone

Compatible with

ZKBio CVSecurity



Product Comparison



SF300



SpeedFace Mini

VS



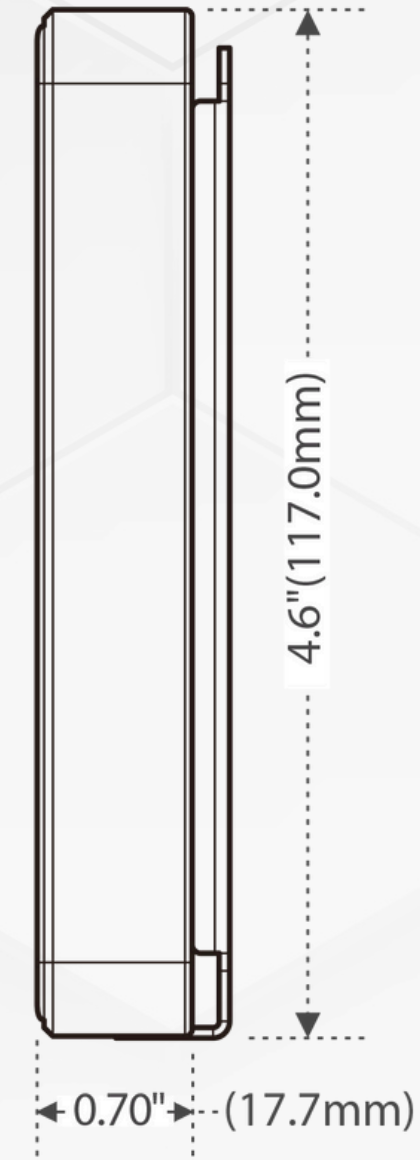
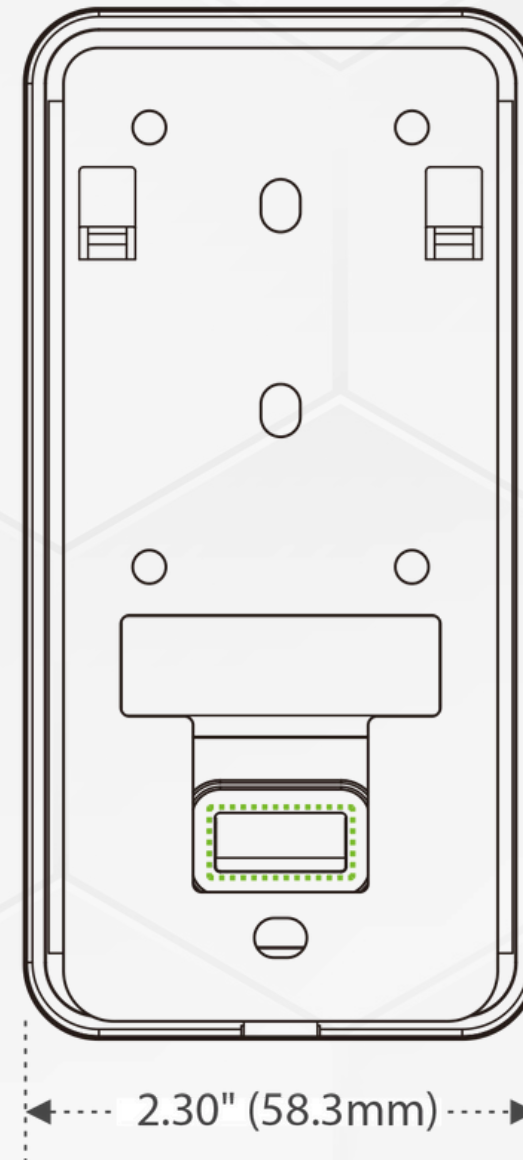
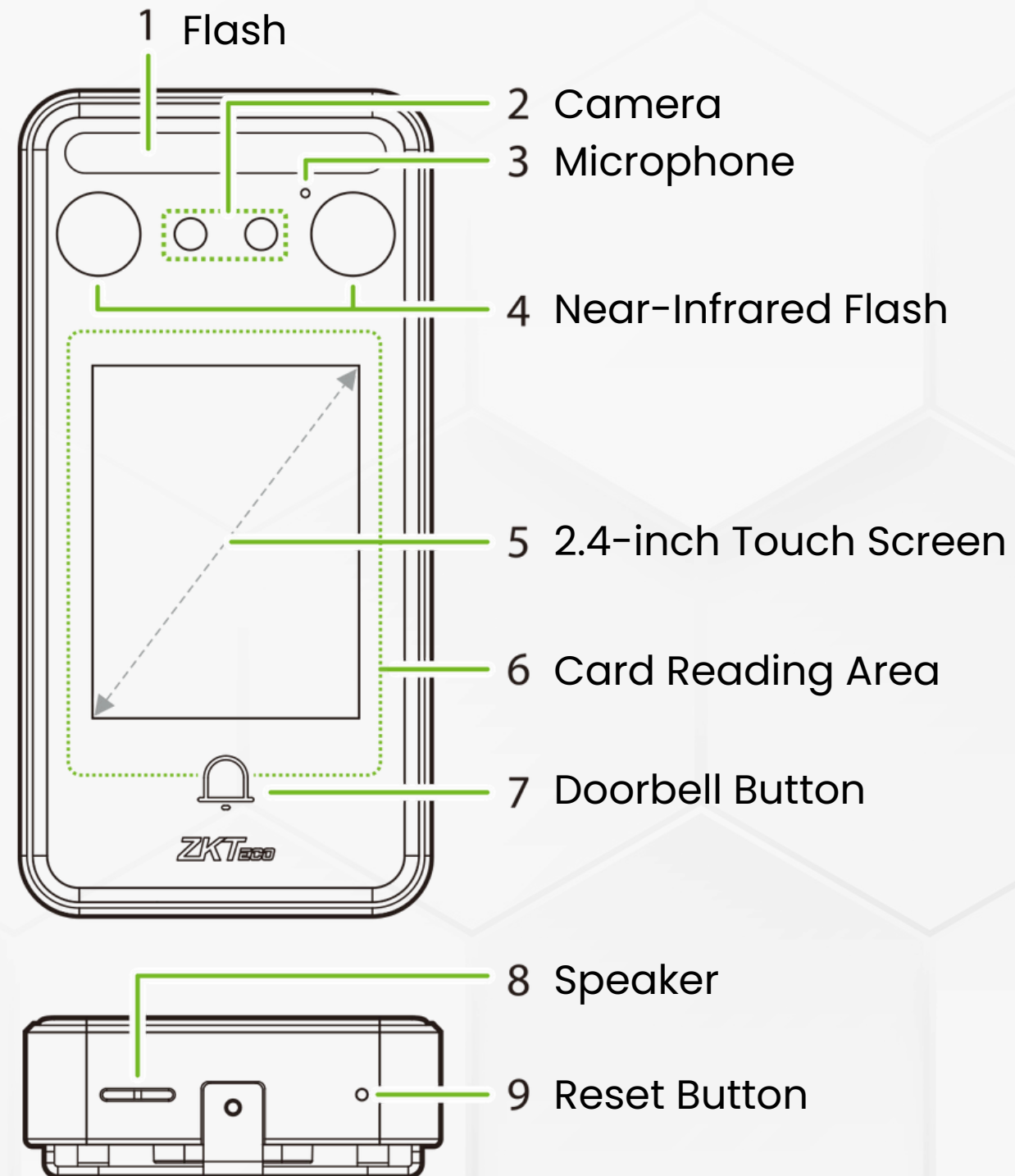
SpeedFace V3L Lite

Product Review

- > The SpeedFace V3L Lite offers a more cost-effective solution compared to the SpeedFace Mini.
- > Designed for the budget-conscious market, the SpeedFace V3L Lite provides reliable facial access control and time attendance functionality.
- > The device is fully compatible with both BioTime and ZKBio CVSecurity software, ensuring seamless integration.
- > Its compact design allows the SpeedFace V3L Lite to discreetly blend into various environments.
- > The SpeedFace V3L Lite supports video intercom functionality when paired with the VT07-B01.
- > The device offers both facial and RFID card authentication for enhanced security.



Product Layout



How to install the device?

Installation Environment



Install indoors only



Avoid installation near glass windows



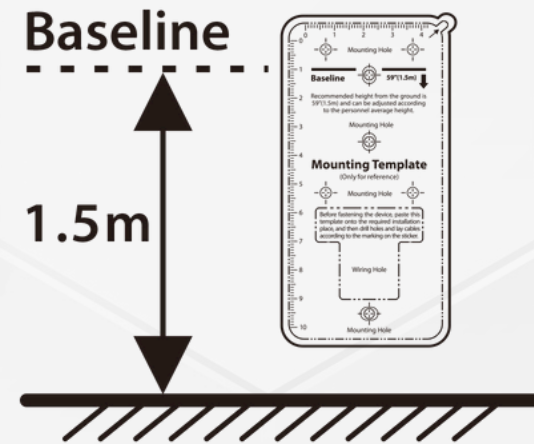
Avoid direct sunlight and exposure



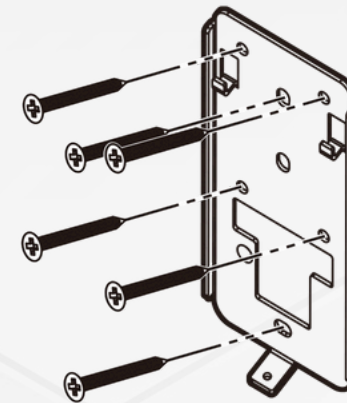
Avoid use of any heat source near the device

Installation on the wall

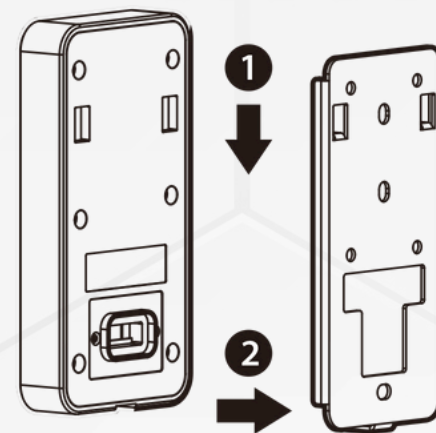
1



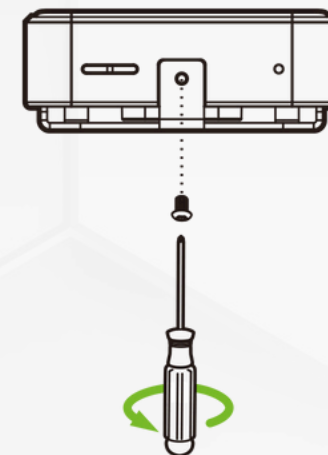
2



3

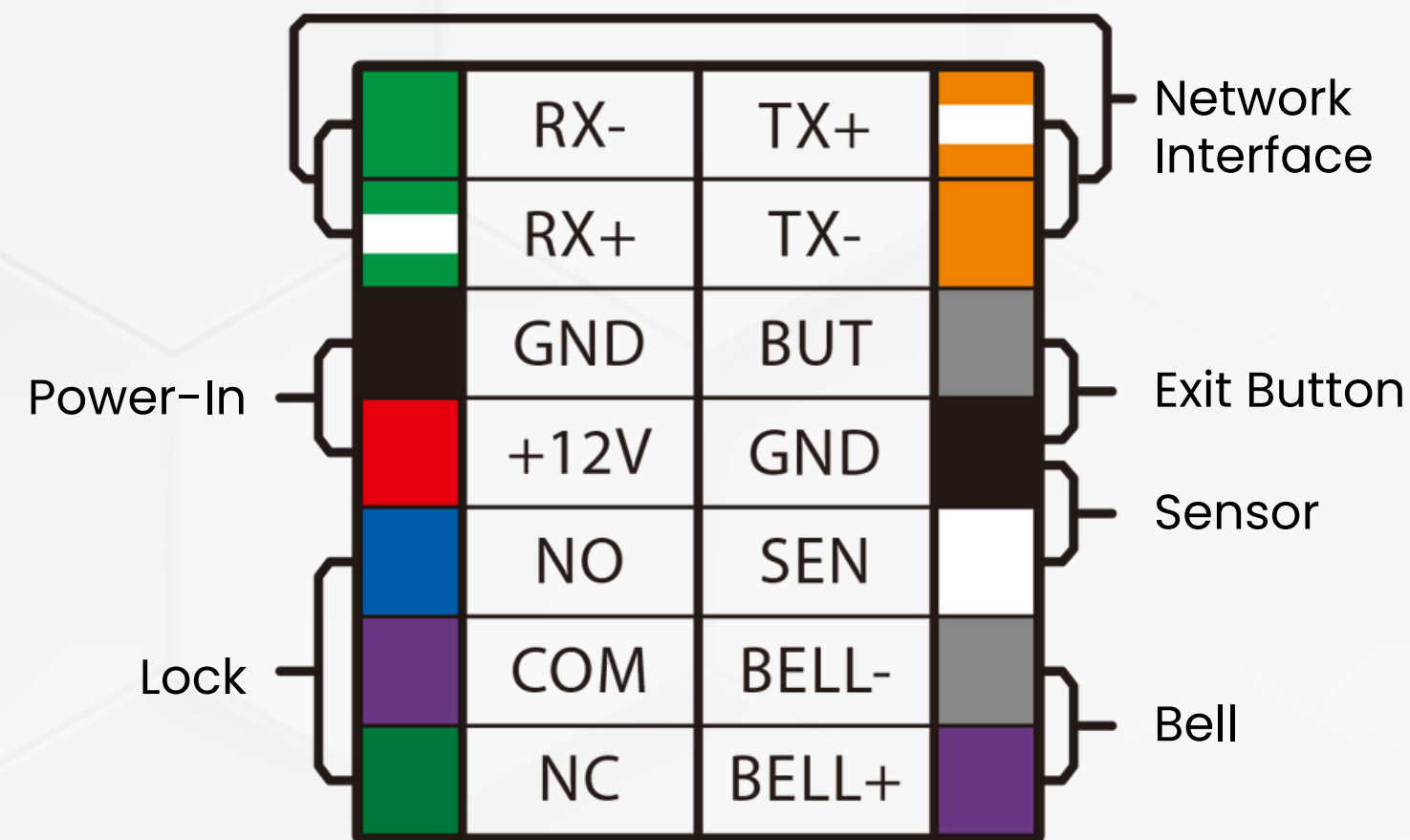
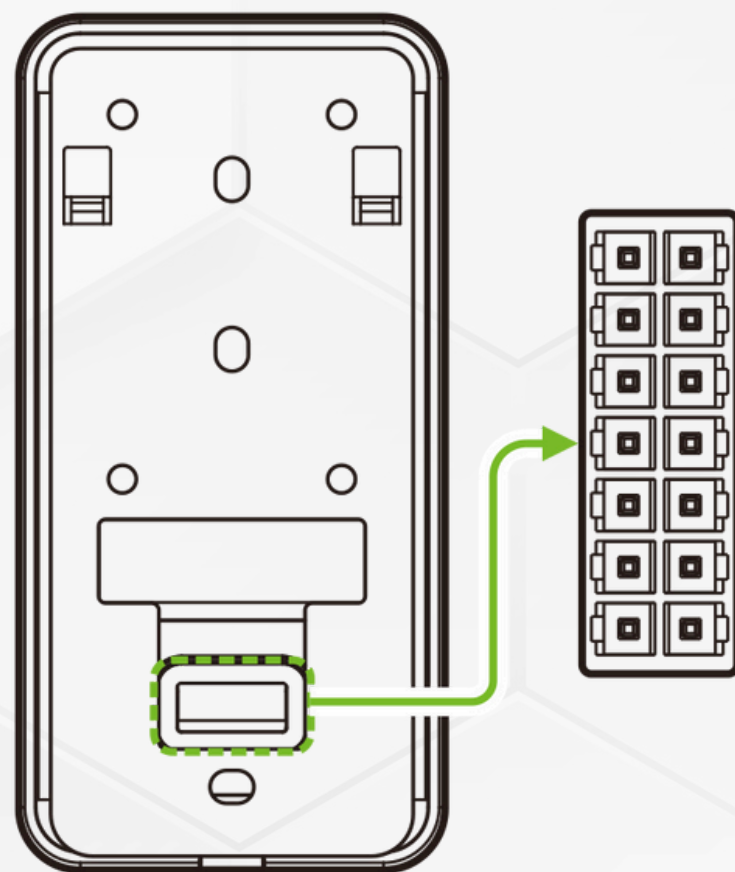


4



- 1 Attach the mounting template sticker to the wall, and drill holes according to the mounting paper.
- 2 Fix the backplate on the wall using wall mounting screws.
- 3 Attach the device to the backplate.
- 4 Fasten the device to the backplate with a security screw.

Terminal Block



Product Specifications

Capacity

User Capacity 3,000 (Optional: 10,000)
Card Capacity 3,000 (Optional: 10,000)
Face Capacity 500 (1:N) (Optional: 1,500)
Logs Capacity 200,000

Hardware

Display: 2.4-inch touch Screen
1GHz Dual Core CPU;
256MB RAM / 512MB ROM;
1MP Binocular Camera;
IEEE 802.11b/g/n 2.4GHz Wi-Fi

Communication

TCP/IP
Wi-Fi

Software

ZKBio CVAccess/BioTime

Functions:

Standard Functions: ADMS, DST, Camera,
14-digit User ID, ID Card, Wired doorbell,
Record Query, Tamper
Switch Alarm, Schedule Bell, T9 Input,
Webserver, Multiple Verification Methods,
Https
Access Control Interface 3rd Party Electric
Lock, Door Sensor, Exit Button, ZSmart
Intercom (Optional)

Other Information

Power Supply: 12V 1.5A
Ingress Protection Rating: IP65
Operating Temperature: -5°C~45°C
Operating Humidity: 10% - 90%RH
Dimensions:(L*W*D) 116.8*58.3*17.0mm
Certifications: ISO 9001, ISO14001, CE,
FCC, RoHS

Biometrics

Facial Recognition Distance: 0.3-1.2m
Facial Recognition Rate: FAR ≤ 0.001%; FRR ≤ 1%
Card Reading Distance: ≤ 3cm
Facial Recognition Algorithm: ZKFace 3.5





Thank you

Unit 8B, Eco Square, 298 Witch-Hazel
Avenue, Centurion, 0144

info@zkteco.co.za | 012 259 1047 | www.zkteco.co.za