



Count on it.

Form No. 3423-437 Rev A

Operator's Manual

Manual Blade

**Sand Pro®/Infield Pro® 3040 and 5040
Traction Unit**

Model No. 08714—Serial No. 400900001 and Up



serious injury or death if you do not follow the recommended precautions.



g000502

Figure 2
Safety-alert symbol

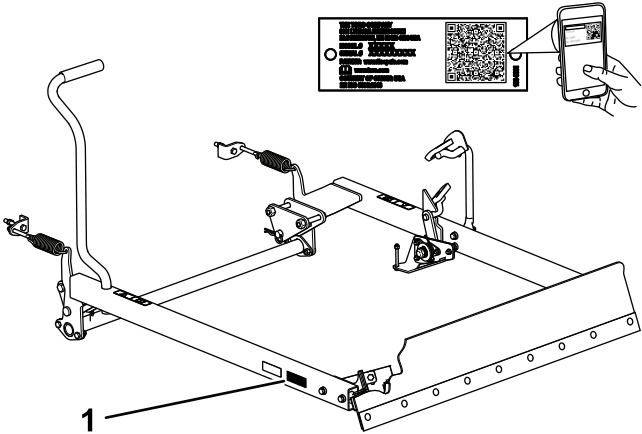
Introduction

Important: To maximize the safety, performance, and proper operation of this machine, carefully read and fully understand the contents of this *Operator's Manual*. Failing to follow these operating instructions or to receive proper training may result in injury. For more information on safe operating practices, including safety tips and training materials, go to www.Toro.com.

You may contact Toro directly at www.Toro.com for product and accessory information, help finding a dealer, or to register your product.

Whenever you need service, genuine Toro parts, or additional information, contact an Authorized Service Dealer or Toro Customer Service and have the model and serial numbers of your product ready. **Figure 1** identifies the location of the model and serial numbers on the product. Write the numbers in the space provided.

Important: With your mobile device, you can scan the QR code on the serial number (if equipped) to access warranty, parts, and other product information.



g252191

Figure 1

1. Model and serial number location

Model No. _____
Serial No. _____

This manual identifies potential hazards and has safety messages identified by the safety alert symbol (**Figure 2**), which signals a hazard that may cause

This manual uses 2 words to highlight information. **Important** calls attention to special mechanical information and **Note** emphasizes general information worthy of special attention.

Contents

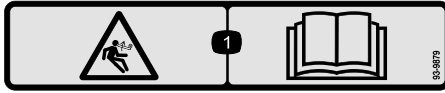
Safety	3
Safety and Instructional Decals	3
Setup	4
1 Preparing the Machine	5
2 Installing the Locking Pedal.....	5
3 Installing the Mounting Brackets	12
4 Installing the Lift Arms.....	13
5 Installing the Blade.....	14
6 Installing the Lift-Arm Foot Pedal.....	16
7 Adjusting the Spring Tension.....	17
Operation	17
Operating the Blade.....	17
Removing and Storing the Blade.....	17

Safety

Safety and Instructional Decals



Safety decals and instructions are easily visible to the operator and are located near any area of potential danger. Replace any decal that is damaged or missing.



decal93-9879

93-9879

1. Stored energy hazard—read the *Operator's Manual*.
-

Setup

Loose Parts

Use the chart below to verify that all parts have been shipped.

Procedure	Description	Qty.	Use
1	No parts required	–	Prepare the machine
2	Pivot bracket Carriage bolt (5/16 x 3/4 inch) Locknut (5/16 inch) Locking pedal Bushing plate Hex-head bolt (5/16 x 3/4 inch) Spacer (5/8 x 1-1/16 inches) Torsion spring Washer (1-1/8 x 2 inches) Retaining ring Washer (5/8 x 1 inch) Locknut (5/8 inch) Locknut (1/4 inch) Hub assembly Bolt (1/4 x 2-3/4 inch) Washer (9/32 inch)	1 2 5 1 1 3 1 1 1 1 1 1 2 1 1 1	Install the locking pedal.
3	Mounting bracket assembly Bolt (1/2 x 3-1/2 inches) Locknut (1/2 inch)	2 4 4	Install the mounting brackets.
4	Right lift arm Left lift arm Clevis pin Hairpin cotter pin Torsion tube Bolt (3/8 x 1 inch) Locknut (3/8 inch)	1 1 2 2 1 4 4	Install the lift arms.
5	40-inch blade (optionally, you can purchase and install the 60-inch blade) Brace plate Bolt (3/8 x 1 inch) Locknut (3/8 inch) Bolt (3/8 x 3 inches)	1 2 2 6 4	Install the blade.
6	Lift-arm foot pedal Bolt (3/8 x 3 inches) Locknut (3/8 inch) Spring bracket Bolt (3/8 x 2-3/4 inches) Extension spring Spring rod	1 2 4 2 2 2 2	Install the lift-arm foot pedal.
7	No parts required	–	Adjust the spring tension.

Media and Additional Parts

Description	Qty.	Use
Operator's Manual	1	Read the manual before installing the blade.

Note: Determine the left and right sides of the machine from the normal operating position.

1

Preparing the Machine

No Parts Required

Procedure

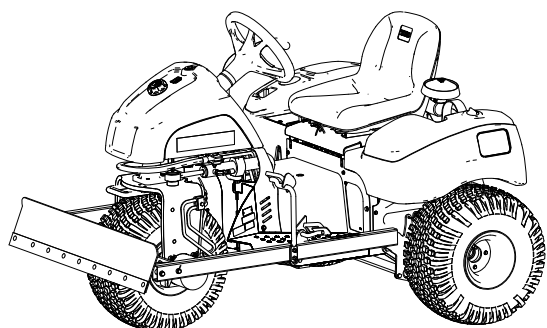


Figure 3

g210130

1. Park the machine on a level surface.
2. Engage the parking brake.
3. Shut off the engine and remove the key.

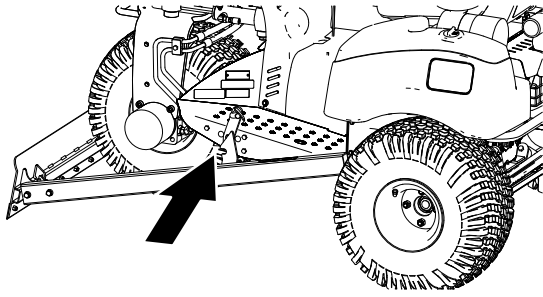
2

Installing the Locking Pedal

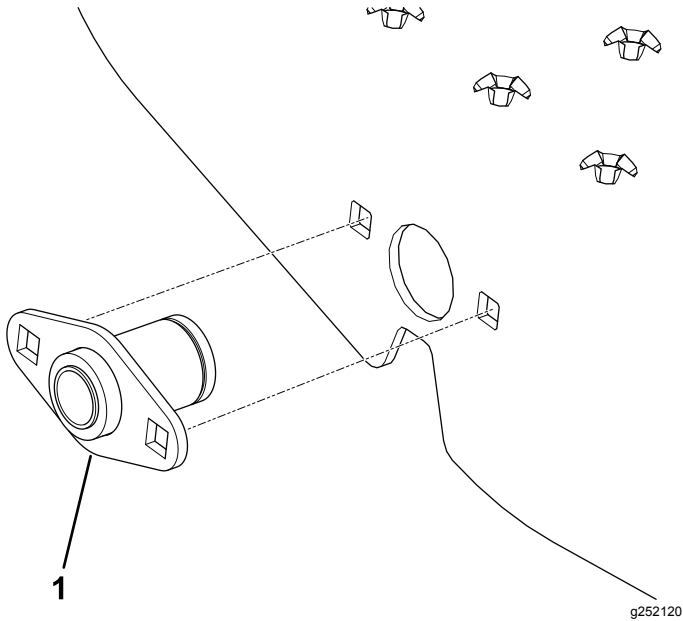
Parts needed for this procedure:

1	Pivot bracket
2	Carriage bolt (5/16 x 3/4 inch)
5	Locknut (5/16 inch)
1	Locking pedal
1	Bushing plate
3	Hex-head bolt (5/16 x 3/4 inch)
1	Spacer (5/8 x 1-1/16 inches)
1	Torsion spring
1	Washer (1-1/8 x 2 inches)
1	Retaining ring
1	Washer (5/8 x 1 inch)
1	Locknut (5/8 inch)
2	Locknut (1/4 inch)
1	Hub assembly
1	Bolt (1/4 x 2-3/4 inch)
1	Washer (9/32 inch)

Installing the Pivot Bracket and the Locking Pedal on a Machine with Holes that Align with the Bushing Plate and the Pivot Bracket



g210450

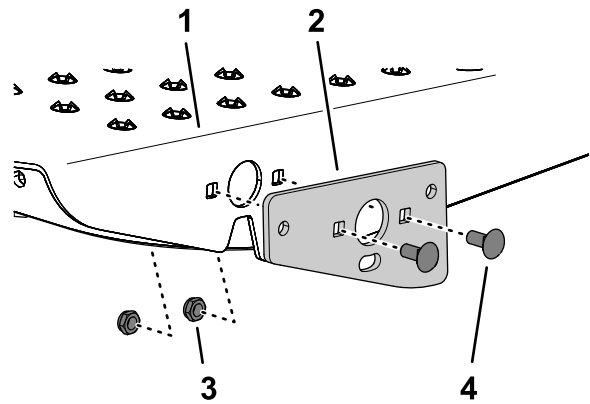


g252120

Figure 4

1. Bushing plate

1. Assemble the pivot bracket onto the footrest with 2 carriage bolts (5/16 x 3/4 inch) and 2 locknuts (5/16 inch) as shown in [Figure 5](#).

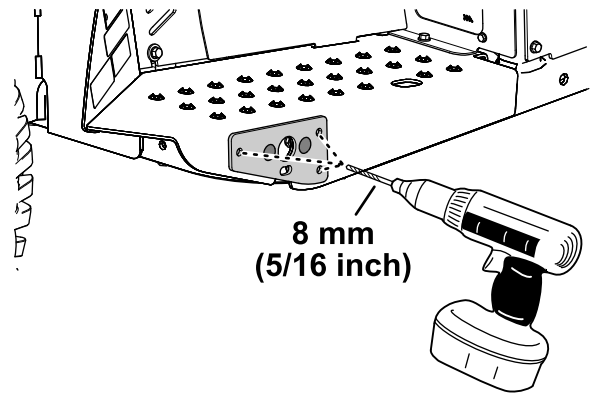


g209719

Figure 5

1. Footrest
2. Pivot bracket
3. Locknut (5/16 inch)
4. Carriage bolt (5/16 x 3/4 inch)

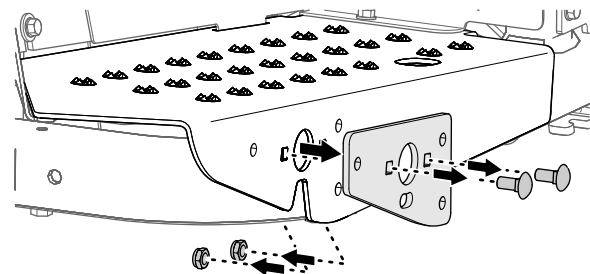
2. Using the pivot bracket as a drilling template, drill 3 holes (8 mm or 5/16 inch) into the flange of the footrest ([Figure 6](#)).



g209724

Figure 6

3. Remove the pivot bracket, 2 carriage bolts (5/16 x 3/4 inch), and 2 locknuts (5/16 inch) from the machine ([Figure 7](#)).



g209726

Figure 7

4. Remove any burrs from the 3 holes that you drilled in step 2.
5. At the inboard side of the footrest flange, align the 3 holes in the pivot bracket to the 3 holes in the flange ([Figure 8](#)).

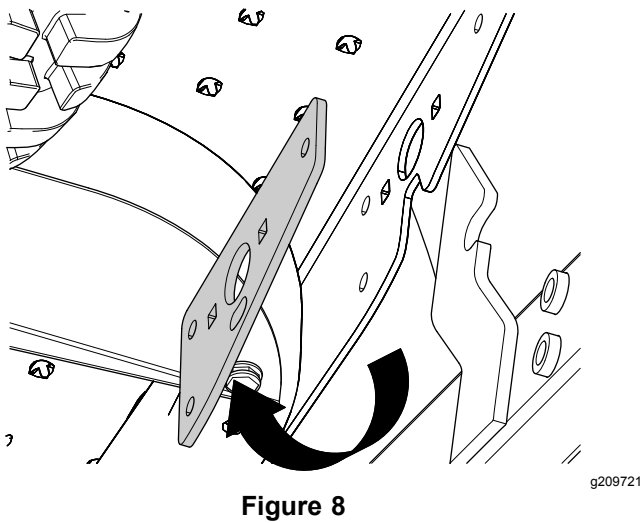


Figure 8

6. Assemble the pivot bracket to the footrest (Figure 9) with 3 hex-head bolts (5/16 x 3/4 inch) and 3 locknuts (5/16 inch).

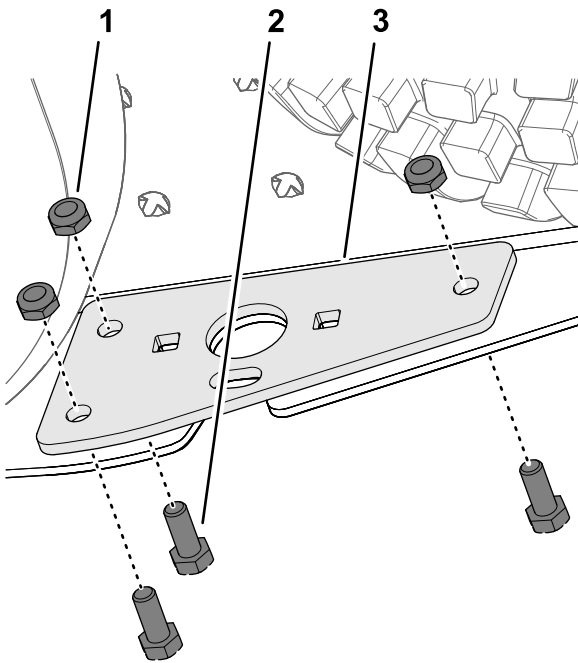


Figure 9

1. Locknut (5/16 inch)
2. Hex-head bolt (5/16 x 3/4 inch)
3. Bracket

7. Assemble the spacer (5/8 x 1-1/16 inches) over the pivot shaft of the locking pedal (Figure 10).

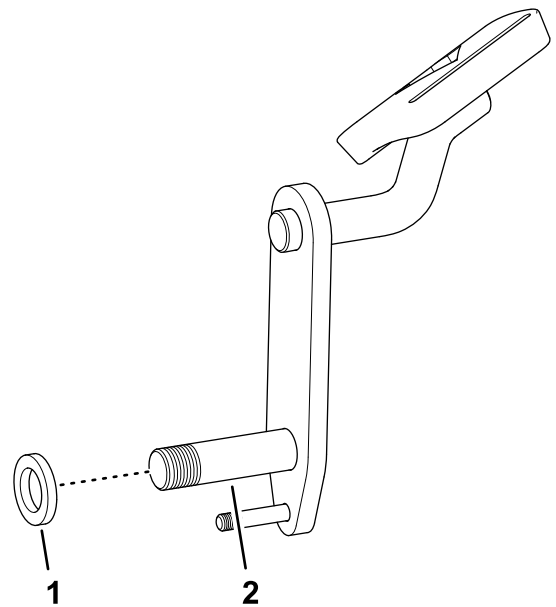


Figure 10

1. Spacer (5/8 x 1-1/16 inches)
2. Pivot shaft (locking pedal)

8. Align the locking pedal to the left footrest and the holes in the pivot bracket (Figure 11).

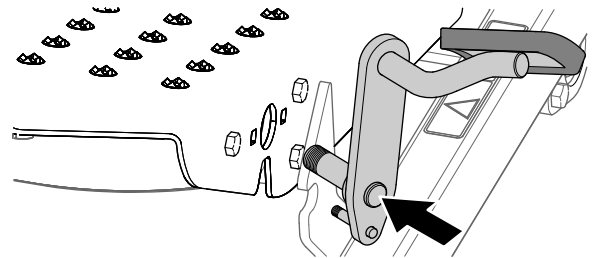
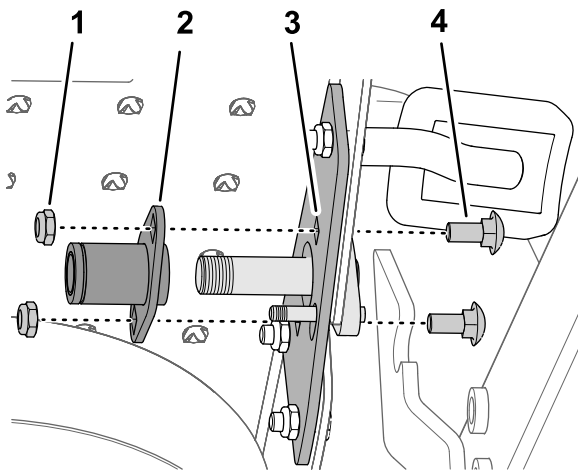


Figure 11

9. Assemble the bushing plate onto the pivot bracket and the footrest flange (Figure 12) with the 2 carriage bolts (5/16 x 3/4 inch) and 2 locknuts (5/16 inch).



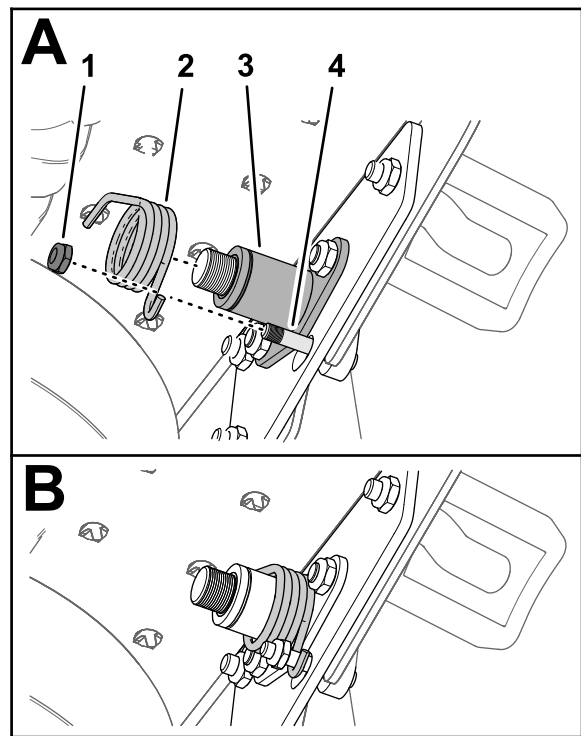
g210470

Figure 12

- | | |
|------------------------|------------------------------------|
| 1. Locknut (5/16 inch) | 3. Pivot bracket |
| 2. Bushing plate | 4. Carriage bolt (5/16 x 3/4 inch) |

10. Torque the locknuts to 71 to 92 N·cm (100 to 130 in-lb)
11. Slide the torsion spring onto the bushing plate while hooking 1 end of the spring onto the small stud on the locking pedal and pressing the other end against the floor plate ([Figure 13](#)).

Note: Position the spring onto the bushing plate as shown.

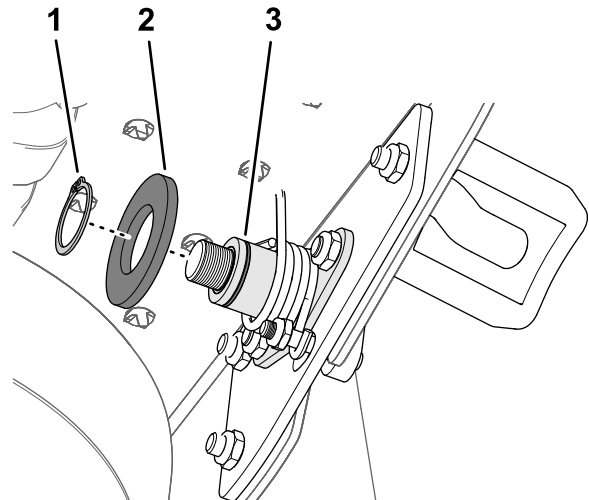


g252374

Figure 13

- | | |
|-----------------------|-------------------------------|
| 1. Locknut (1/4 inch) | 3. Bushing plate |
| 2. Torsion spring | 4. Small stud (locking pedal) |

12. Secure the torsion spring to the small stud with a locknut (1/4 inch); refer to [Figure 13](#).
13. Secure the torsion spring to the bushing plate with a flat washer (1-1/8 x 2 inch) and a retaining ring ([Figure 14](#)).



g210334

Figure 14

- | | |
|------------------------------|---------------------------|
| 1. Retaining ring | 3. Groove (bushing plate) |
| 2. Washer (1-1/8 x 2 inches) | |

14. Secure the locking pedal to the footrest and the bushing plate with a flat washer (5/8 x 1 inch) and a locknut (5/8 inch); refer to [Figure 15](#).

Note: Do not overtighten the nut; the locking pedal must pivot freely when pressed.

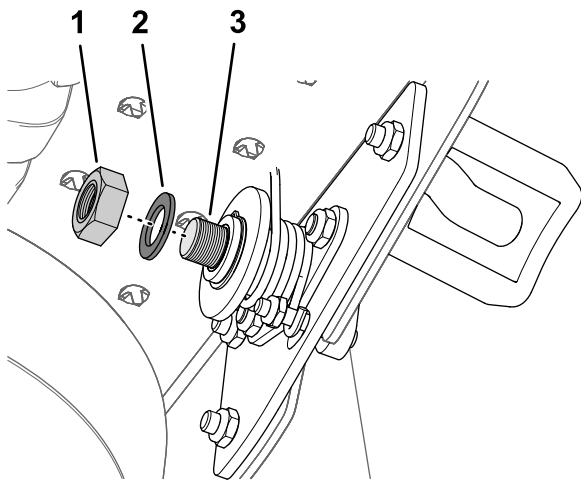
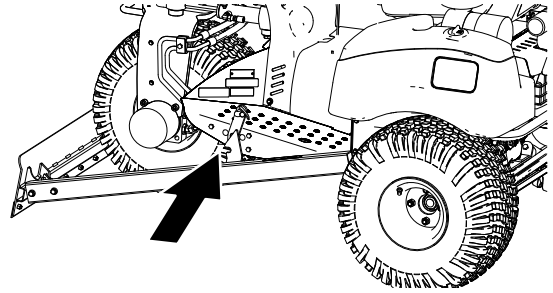


Figure 15

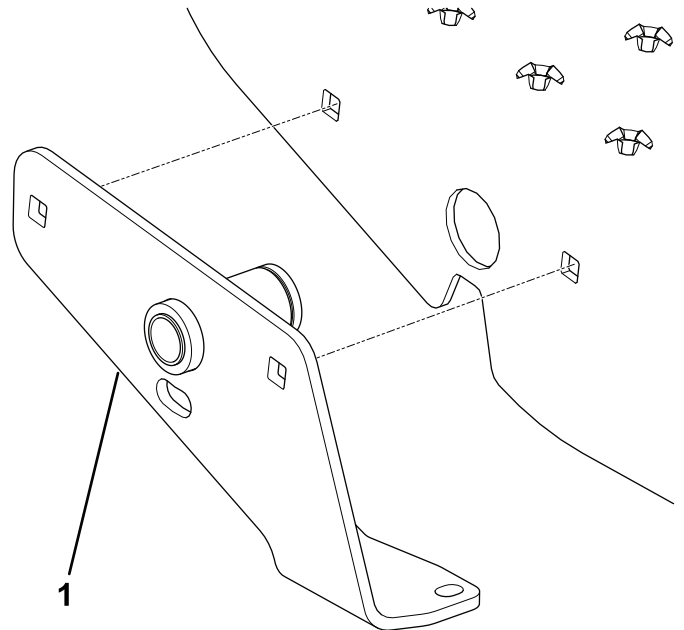
g210333

1. Nut (5/8 inch)
2. Washer (5/8 x 1 inch)
3. Pivot shaft

Installing the Hub Assembly and the Locking Pedal on a Machine with Holes that Align with the Hub Assembly



g210450



g252121

Figure 16

1. Hub assembly

1. Install the hub assembly to the left footrest with 2 bolts (5/16 x 3/4 inch) and 2 locknuts (5/16 inch).

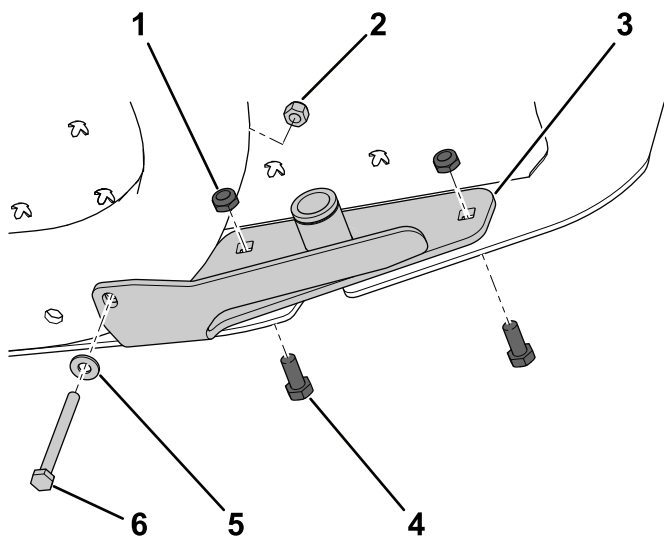


Figure 17

- | | |
|-------------------------|----------------------------|
| 1. Locknut (5/16 inch.) | 4. Bolt (5/16 x 3/4 inch) |
| 2. Locknut (1/4 inch) | 5. Washer (9/32 inch) |
| 3. Hub assembly | 6. Bolt (1/4 x 2-3/4 inch) |

- Secure the bottom of the hub assembly to the machine frame with a bolt (1/4 x 2-3/4 inch), a washer (1/4 inch), and a locknut (1/4 inch); refer to [Figure 17](#).
- Torque the locknuts to 71 to 92 N·cm (100 to 130 in·lb)
- Align the locking pedal to the left footrest and the holes in the hub assembly ([Figure 18](#)).

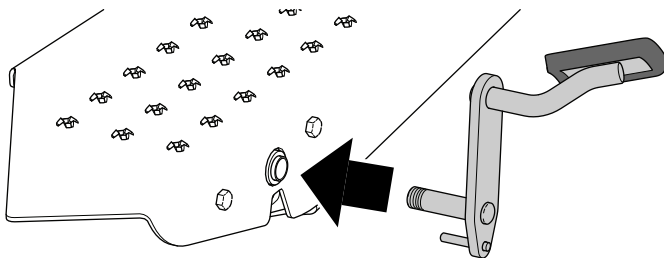
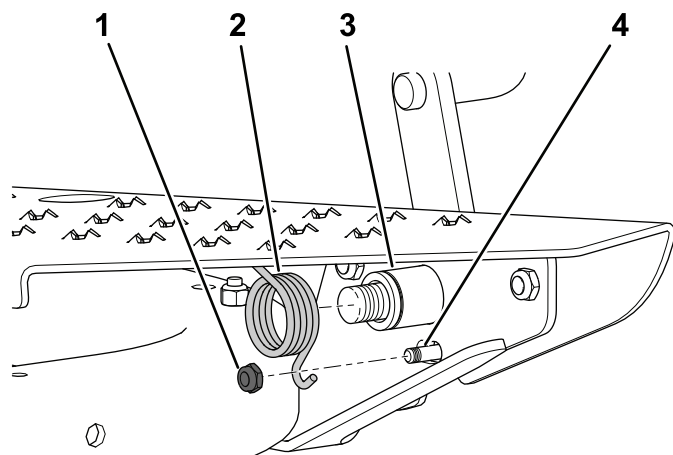


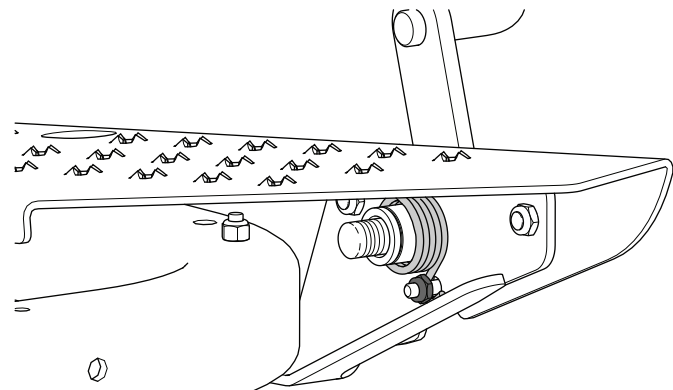
Figure 18

- Insert the pivot shaft of the locking pedal through the hole in the left footrest and through the hub assembly ([Figure 18](#)).
- Slide the torsion spring onto the hub assembly while hooking 1 end of the spring onto the small stud on the locking pedal and pressing the other end against the floor plate ([Figure 19](#)).

Note: Position the spring onto the hub assembly as shown in [Figure 19](#).



g252125

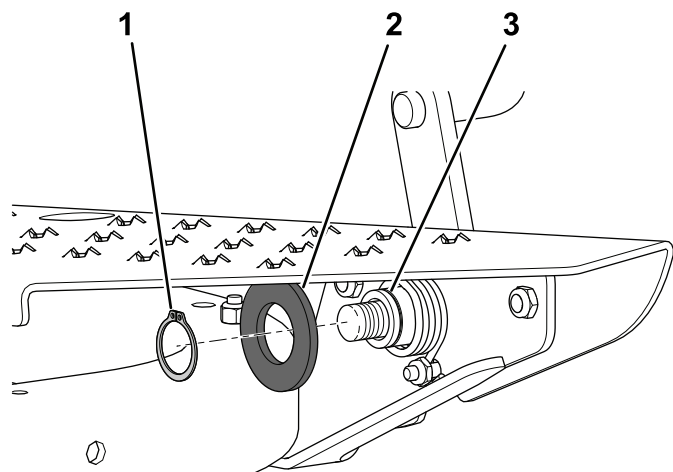


g252124

Figure 19

- | | |
|-----------------------|-------------------------------|
| 1. Locknut (1/4 inch) | 3. Hub assembly |
| 2. Torsion spring | 4. Small stud (locking pedal) |

- Secure the torsion spring to the small stud with a locknut (1/4 inch); refer to [Figure 19](#).
- Secure the torsion spring to the bushing plate with a flat washer (1-1/8 x 2 inch) and a retaining ring ([Figure 20](#)).



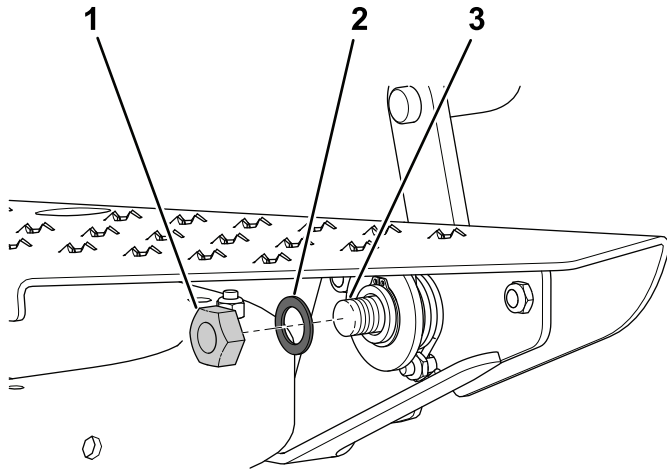
g252127

Figure 20

- | | |
|------------------------------|--------------------------|
| 1. Retaining ring | 3. Groove (hub assembly) |
| 2. Washer (1-1/8 x 2 inches) | |

9. Secure the locking pedal to the footrest and the hub assembly with a flat washer (5/8 x 1 inch) and locknut (5/8 inch); refer to [Figure 21](#).

Note: Do not overtighten the nut; the locking pedal must pivot freely when pressed.



g252126

Figure 21

- | | |
|--------------------------|----------------|
| 1. Nut (5/8 inch) | 3. Pivot shaft |
| 2. Washer (5/8 x 1 inch) | |

Discard the parts that were not necessary for your machine.

3

Installing the Mounting Brackets

Parts needed for this procedure:

2	Mounting bracket assembly
4	Bolt (1/2 x 3-1/2 inches)
4	Locknut (1/2 inch)

Procedure

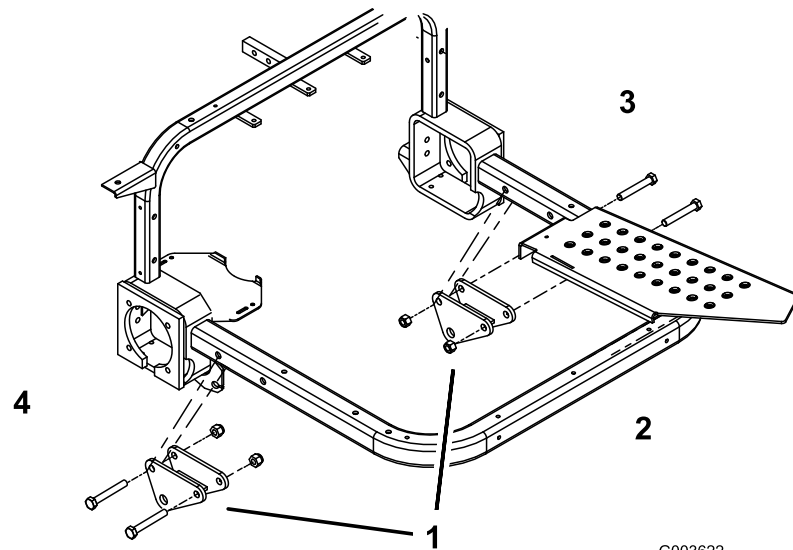
Note: Make sure that the front and rear tires are inflated to 28 to 41 kPa (4 to 6 psi).

1. Block up the rear of the machine and remove the rear tires.

Note: Position the blocks under the rear wheel motor mounts.

2. Loosely secure a mounting bracket assembly to the right and left foot rest tubes with 2 bolts (1/2 x 3-1/2 inches) and locknuts (1/2 inch). Position the mounting bracket assemblies and bolts as shown in [Figure 22](#).

Note: The right mounting bracket does not need to be installed if the machine is equipped with a midmount tool bar.



G003622

g003622

Figure 22

1. Mounting bracket assemblies
2. Front

3. Left
4. Right

4

Installing the Lift Arms

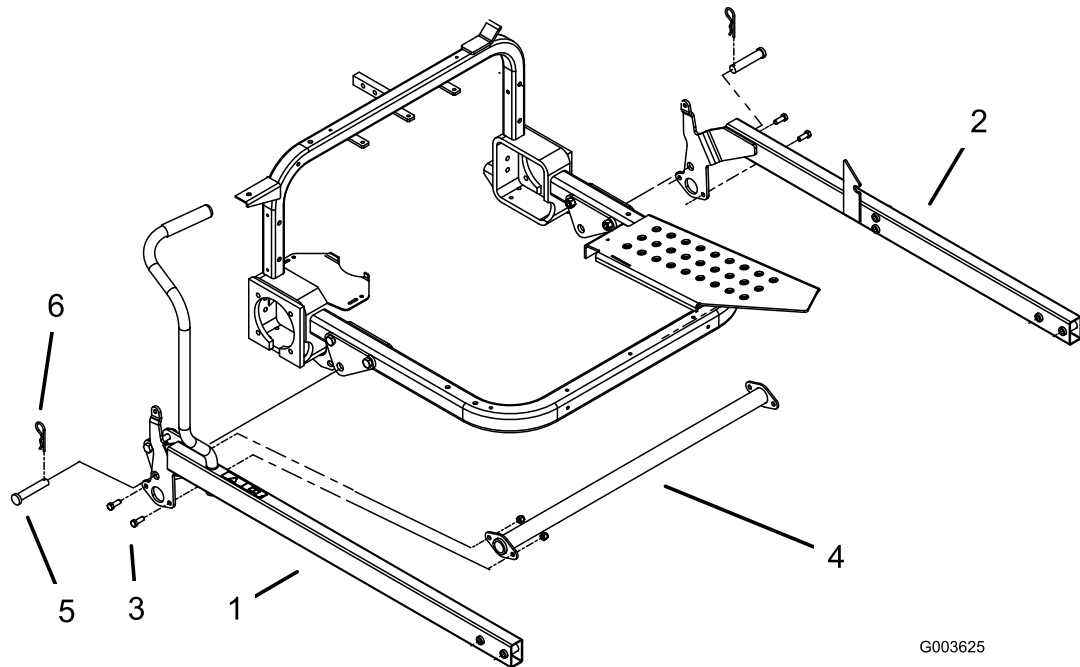
Parts needed for this procedure:

1	Right lift arm
1	Left lift arm
2	Clevis pin
2	Hairpin cotter pin
1	Torsion tube
4	Bolt (3/8 x 1 inch)
4	Locknut (3/8 inch)

Procedure

1. Position the lift arms so that the mounting hole of each lift arm bracket aligns with the holes in the mounting brackets ([Figure 23](#)).
 2. Secure the right lift arm to the mounting bracket with a clevis pin and hairpin cotter pin ([Figure 23](#)).
 3. Loosely install one end of the torsion tube to the right lift arm with 2 bolts (3/8 x 1 inch) and locknuts (3/8 inch); refer to [Figure 23](#).
- Note:** Do not tighten the fasteners at this time.
4. Secure the left lift arm to the mounting bracket with a clevis pin and hairpin cotter pin ([Figure 23](#)).
 5. Loosely install the other end of the torsion tube to the left lift arm with 2 bolts (3/8 x 1 inch) and locknuts (3/8 inch); refer to [Figure 23](#).

Note: Do not tighten the fasteners at this time.



G003625

g003625

Figure 23

- | | | |
|-------------------|------------------------|-----------------------|
| 1. Right lift arm | 3. Bolt (3/8 x 1 inch) | 5. Clevis pin |
| 2. Left lift arm | 4. Torsion tube | 6. Hairpin cotter pin |

5

Installing the Blade

Parts needed for this procedure:

1	40-inch blade (optionally, you can purchase and install the 60-inch blade)
2	Brace plate
2	Bolt (3/8 x 1 inch)
6	Locknut (3/8 inch)
4	Bolt (3/8 x 3 inches)

Procedure

Note: Optionally, you can purchase a 60-inch blade. Install it as directed for the 40-inch blade in this section.

1. Loosely secure a brace plate to each of the inner mounting tabs on the blade assembly.

Note: Position the brace plates as shown in [Figure 24](#).

2. Loosely secure the front of the lift arms to the blade mounting brackets and brace plates with 4 bolts (3/8 x 3 inch) and 4 locknuts (3/8 inch); refer to [Figure 24](#).

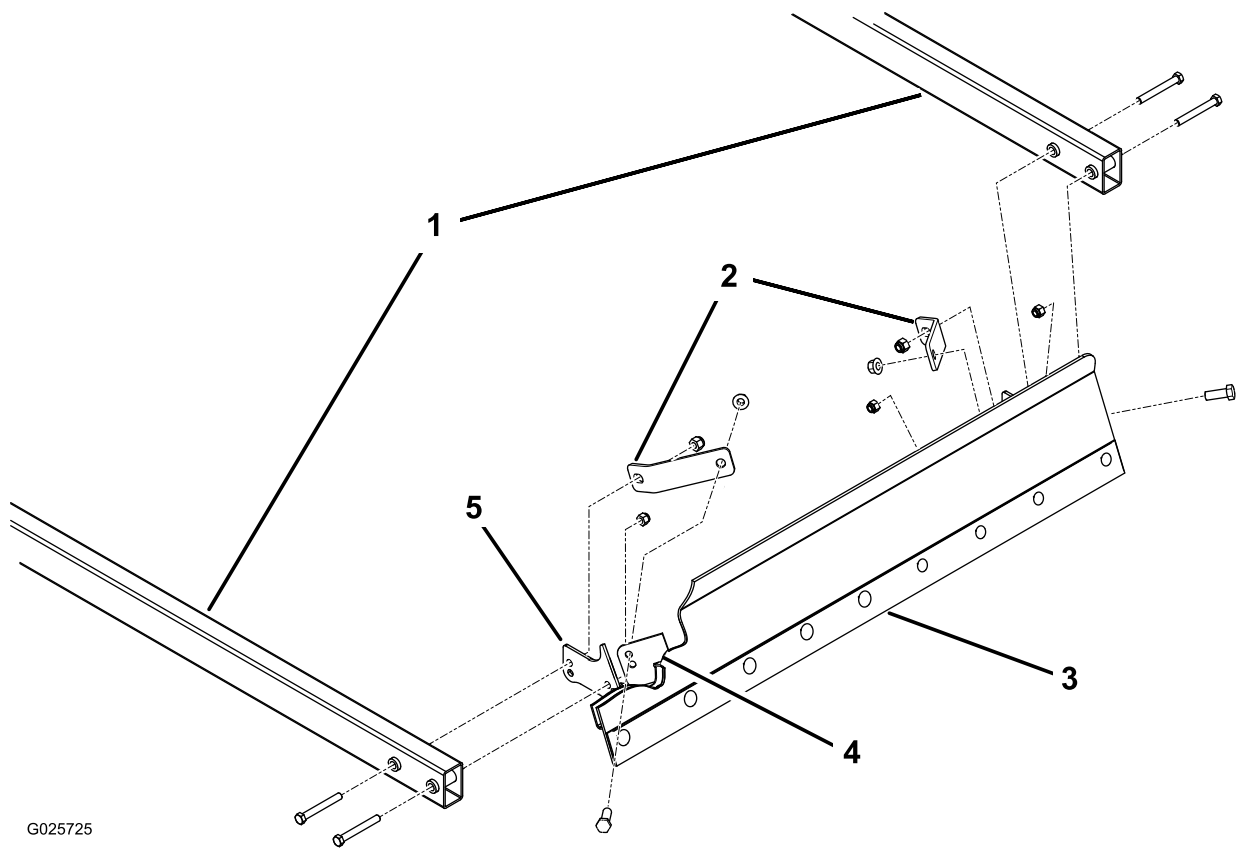
Note: Using the upper mounting holes on the blade mounting brackets will make the blade operate more aggressively ([Figure 24](#)).

3. With the blade resting on the level surface, tighten the fasteners securing the lift arms to the blade ([Figure 24](#)).

Note: Torque the fasteners to 19 to 24 N·m (14 to 18 ft-lb).

4. Tighten the bolts and locknuts securing the ends of the torsion tubes to the lift arms ([Figure 23](#)).

Note: Torque the fasteners to 19 to 24 N·m (14 to 18 ft-lb).



G025725

g025725

Figure 24

- | | |
|----------------|---------------------------|
| 1. Lift arms | 4. Inner mounting tab (2) |
| 2. Brace plate | 5. Blade mounting bracket |
| 3. Blade | |

6

Installing the Lift-Arm Foot Pedal

Parts needed for this procedure:

1	Lift-arm foot pedal
2	Bolt (3/8 x 3 inches)
4	Locknut (3/8 inch)
2	Spring bracket
2	Bolt (3/8 x 2-3/4 inches)
2	Extension spring
2	Spring rod

Procedure

1. Mount the lift-arm foot pedal to the outside of the left lift arm with 2 bolts (3/8 x 3 inch) and 2 locknuts (3/8 inch).

Note: Position the foot pedal as shown in [Figure 25](#).

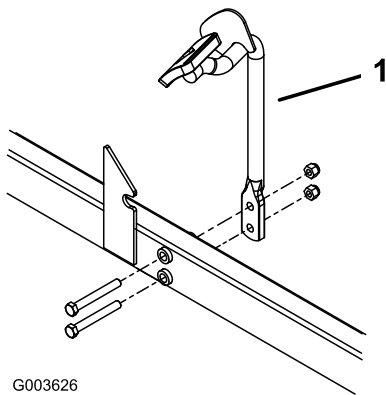


Figure 25

1. Lift-arm foot pedal

2. Remove the **lower** nut and bolt securing each hitch tube mounting bracket to the vertical frame tubes ([Figure 26](#)).

Note: Discard the nut and bolt.

3. Using the open hitch tube mounting holes, secure a spring bracket to each hitch tube bracket/vertical frame tube with a bolt (3/8 x 2-3/4 inch) and a locknut (3/8 inch).

Note: Position the spring brackets as shown in [Figure 26](#).

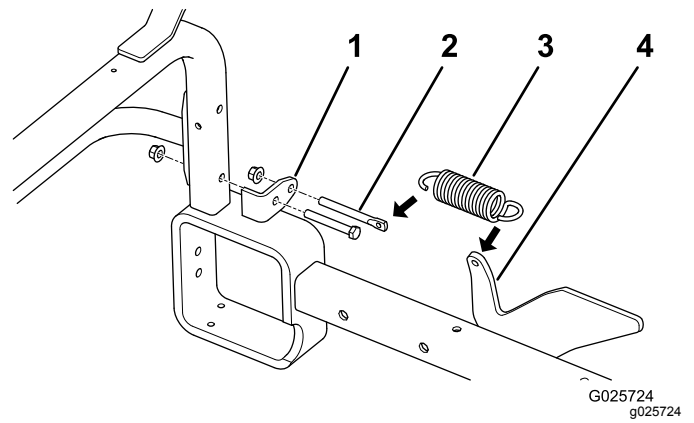


Figure 26

1. Spring bracket
 2. Spring rod
 3. Extension spring
 4. Lift arm
4. Pull back on the handle to raise and lock the blade into the transport position.
 5. Tighten all remaining fasteners.
 6. Connect the extension spring to the lift arm and to a spring rod.
 7. Insert the spring rod into the hole in the spring bracket and loosely secure it with a locknut (3/8 inch).
 8. Repeat steps 6 and 7 on the opposite side of the machine.
 9. Install the rear tires and remove the blocks from under the rear of the machine.

Note: Torque the lug nuts to 61 to 75 N·m (45 to 55 ft·lb).

7

Adjusting the Spring Tension

No Parts Required

Procedure

The spring adjustment controls the force that it takes to raise the blade to the transport position. If the spring is too loose, it will be hard to raise the blade to the transport position. However, too much spring tension causes the blade to float excessively during operation.

1. Lower the blade to the floor.

Note: When the springs are properly adjusted, the entire length of the bottom of the blade will be no more than 6 mm (1/4 inch) off the floor.

2. Rotate the spring adjusting nuts (Figure 27) clockwise to raise the blade or counterclockwise to lower the blade.

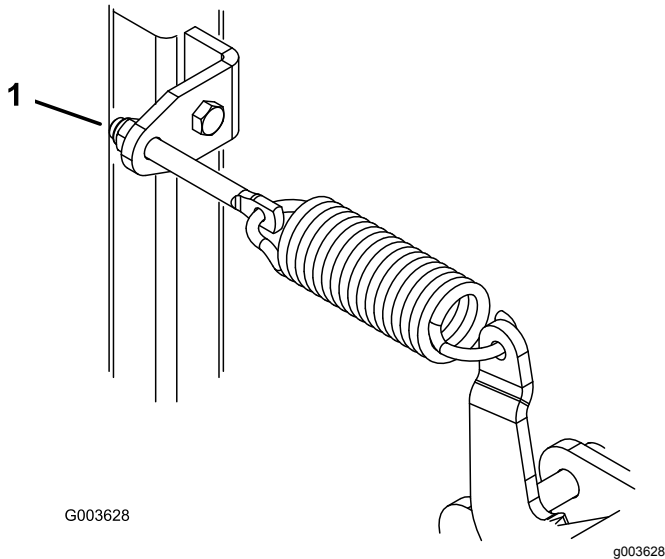


Figure 27

1. Adjusting nut

Operation

Operating the Blade

Pull back on the handle to raise and lock the blade into the transport position. Press the locking pedal to release the blade into the operating position.

You can use the blade to push or pull sand and dirt. With the blade in the operating position, simply push forward or pull back slightly on the handle or press on the lift arm foot pedal to control the plowing action.

Note: If the wheels spin while plowing, raise the blade slightly by pulling back on the handle. At times the engine may begin to overload. When it does, gradually release the traction pedal to increase the engine speed and power.

Removing and Storing the Blade

1. Carefully remove the adjusting nuts securing the spring rods to the spring brackets.

⚠ WARNING

If the springs are under tension, they could cause personal injury.

Carefully release pressure from components with stored energy.

2. Remove the spring rods and springs.
3. Lower the blade to the floor.
4. Remove the hairpin cotter pins and the clevis pins that connect the lift arms to the mounting brackets.
5. Raise the front of the machine and slide the complete blade assembly forward and away from the machine.

Declaration of Incorporation

The Toro Company, 8111 Lyndale Ave. South, Bloomington, MN, USA declares that the following unit(s) conform(s) to the directives listed, when installed in accordance with the accompanying instructions onto certain Toro models as indicated on the relevant Declarations of Conformity.

Model No.	Serial No.	Product Description	Invoice Description	General Description	Directive
08714	400900001 and Up	Manual Blade	MANUAL BLADE	Manual Blade	2006/42/EC, 2000/14/EC

Relevant technical documentation has been compiled as required per Part B of Annex VII of 2006/42/EC.

We will undertake to transmit, in response to requests by national authorities, relevant information on this partly completed machinery. The method of transmission shall be electronic transmittal.

This machinery shall not be put into service until incorporated into approved Toro models as indicated on the associated Declaration of Conformity and in accordance with all instructions, whereby it can be declared in conformity with all relevant Directives.

Certified:



John Heckel
Sr. Engineering Manager
8111 Lyndale Ave. South
Bloomington, MN 55420, USA
April 12, 2018

Authorized Representative:

Marcel Dutrieux
Manager European Product Integrity
Toro Europe NV
Nijverheidsstraat 5
2260 Oevel
Belgium

Tel. +32 16 386 659

European Privacy Notice

The Information Toro Collects

Toro Warranty Company (Toro) respects your privacy. In order to process your warranty claim and contact you in the event of a product recall, we ask you to share certain personal information with us, either directly or through your local Toro company or dealer.

The Toro warranty system is hosted on servers located within the United States where privacy law may not provide the same protection as applies in your country.

BY SHARING YOUR PERSONAL INFORMATION WITH US, YOU ARE CONSENTING TO THE PROCESSING OF YOUR PERSONAL INFORMATION AS DESCRIBED IN THIS PRIVACY NOTICE.

The Way Toro Uses Information

Toro may use your personal information to process warranty claims, to contact you in the event of a product recall and for any other purpose which we tell you about. Toro may share your information with Toro's affiliates, dealers or other business partners in connection with any of these activities. We will not sell your personal information to any other company. We reserve the right to disclose personal information in order to comply with applicable laws and with requests by the appropriate authorities, to operate our systems properly or for our own protection or that of other users.

Retention of your Personal Information

We will keep your personal information as long as we need it for the purposes for which it was originally collected or for other legitimate purposes (such as regulatory compliance), or as required by applicable law.

Toro's Commitment to Security of Your Personal Information

We take reasonable precautions in order to protect the security of your personal information. We also take steps to maintain the accuracy and current status of personal information.

Access and Correction of your Personal Information

If you would like to review or correct your personal information, please contact us by email at legal@toro.com.

Australian Consumer Law

Australian customers will find details relating to the Australian Consumer Law either inside the box or at your local Toro Dealer.



Toro General Commercial Product Warranty

A Two-Year Limited Warranty

Conditions and Products Covered

The Toro Company and its affiliate, Toro Warranty Company, pursuant to an agreement between them, jointly warrant your Toro Commercial product ("Product") to be free from defects in materials or workmanship for two years or 1500 operational hours*, whichever occurs first. This warranty is applicable to all products with the exception of Aerators (refer to separate warranty statements for these products). Where a warrantable condition exists, we will repair the Product at no cost to you including diagnostics, labor, parts, and transportation. This warranty begins on the date the Product is delivered to the original retail purchaser.

* Product equipped with an hour meter.

Instructions for Obtaining Warranty Service

You are responsible for notifying the Commercial Products Distributor or Authorized Commercial Products Dealer from whom you purchased the Product as soon as you believe a warrantable condition exists. If you need help locating a Commercial Products Distributor or Authorized Dealer, or if you have questions regarding your warranty rights or responsibilities, you may contact us at:

Toro Commercial Products Service Department
Toro Warranty Company
8111 Lyndale Avenue South
Bloomington, MN 55420-1196

952-888-8801 or 800-952-2740
E-mail: commercial.warranty@toro.com

Owner Responsibilities

As the Product owner, you are responsible for required maintenance and adjustments stated in your *Operator's Manual*. Failure to perform required maintenance and adjustments can be grounds for disallowing a warranty claim.

Items and Conditions Not Covered

Not all product failures or malfunctions that occur during the warranty period are defects in materials or workmanship. This warranty does not cover the following:

- Product failures which result from the use of non-Toro replacement parts, or from installation and use of add-on, or modified non-Toro branded accessories and products. A separate warranty may be provided by the manufacturer of these items.
- Product failures which result from failure to perform recommended maintenance and/or adjustments. Failure to properly maintain your Toro product per the Recommended Maintenance listed in the *Operator's Manual* can result in claims for warranty being denied.
- Product failures which result from operating the Product in an abusive, negligent, or reckless manner.
- Parts subject to consumption through use unless found to be defective. Examples of parts which are consumed, or used up, during normal Product operation include, but are not limited to, brake pads and linings, clutch linings, blades, reels, rollers and bearings (sealed or greasable), bed knives, spark plugs, castor wheels and bearings, tires, filters, belts, and certain sprayer components such as diaphragms, nozzles, and check valves, etc.
- Failures caused by outside influence. Conditions considered to be outside influence include, but are not limited to, weather, storage practices, contamination, use of unapproved fuels, coolants, lubricants, additives, fertilizers, water, or chemicals, etc.
- Failure or performance issues due to the use of fuels (e.g. gasoline, diesel, or biodiesel) that do not conform to their respective industry standards.

- Normal noise, vibration, wear and tear, and deterioration.
- Normal "wear and tear" includes, but is not limited to, damage to seats due to wear or abrasion, worn painted surfaces, scratched decals or windows, etc.

Parts

Parts scheduled for replacement as required maintenance are warranted for the period of time up to the scheduled replacement time for that part. Parts replaced under this warranty are covered for the duration of the original product warranty and become the property of Toro. Toro will make the final decision whether to repair any existing part or assembly or replace it. Toro may use remanufactured parts for warranty repairs.

Deep Cycle and Lithium-Ion Battery Warranty:

Deep cycle and Lithium-Ion batteries have a specified total number of kilowatt-hours they can deliver during their lifetime. Operating, recharging, and maintenance techniques can extend or reduce total battery life. As the batteries in this product are consumed, the amount of useful work between charging intervals will slowly decrease until the battery is completely worn out. Replacement of worn out batteries, due to normal consumption, is the responsibility of the product owner. Battery replacement may be required during the normal product warranty period at owner's expense. Note: (Lithium-Ion battery only): A Lithium-Ion battery has a part only prorated warranty beginning year 3 through year 5 based on the time in service and kilowatt hours used. Refer to the *Operator's Manual* for additional information.

Maintenance is at Owner's Expense

Engine tune-up, lubrication, cleaning and polishing, replacement of filters, coolant, and completing recommended maintenance are some of the normal services Toro products require that are at the owner's expense.

General Conditions

Repair by an Authorized Toro Distributor or Dealer is your sole remedy under this warranty.

Neither The Toro Company nor Toro Warranty Company is liable for indirect, incidental or consequential damages in connection with the use of the Toro Products covered by this warranty, including any cost or expense of providing substitute equipment or service during reasonable periods of malfunction or non-use pending completion of repairs under this warranty. Except for the Emissions warranty referenced below, if applicable, there is no other express warranty. All implied warranties of merchantability and fitness for use are limited to the duration of this express warranty.

Some states do not allow exclusions of incidental or consequential damages, or limitations on how long an implied warranty lasts, so the above exclusions and limitations may not apply to you. This warranty gives you specific legal rights, and you may also have other rights which vary from state to state.

Note regarding engine warranty:

The Emissions Control System on your Product may be covered by a separate warranty meeting requirements established by the U.S. Environmental Protection Agency (EPA) and/or the California Air Resources Board (CARB). The hour limitations set forth above do not apply to the Emissions Control System Warranty. Refer to the Engine Emission Control Warranty Statement supplied with your product or contained in the engine manufacturer's documentation for details.

Countries Other than the United States or Canada

Customers who have purchased Toro products exported from the United States or Canada should contact their Toro Distributor (Dealer) to obtain guarantee policies for your country, province, or state. If for any reason you are dissatisfied with your Distributor's service or have difficulty obtaining guarantee information, contact the Toro importer.