

# Padlocks

FEATURES	Medeco <sup>3</sup>	BiLevel	Medeco X4	CLIQ	Medeco XT	Nexgen
<b>Protector II</b>						
Protector II body accepts 6 pin knob style cylinders	●		●	●	●	
Protector II is available as key retaining only	●		●	●	●	
<b>System Series</b>						
System Series body accepts knob style cylinders	●	●	●	●	●	
System Series body accepts large format interchangeable cylinders	●	●		●		
System Series body accepts 6 or 7 pin small format interchangeable cores			●		●	
Non-key retaining and key retaining models available	●	●	●	●	●	
<b>Hockey Puck</b>						
Hockey Puck body accepts knob style 5 pin cylinder	●	●				
Hockey Puck body accepts knob style 6 pin cylinder			●			
Hockey Puck is available as non- key retaining only	●	●	●		●	
<b>G8R</b>						
G8R body accepts a pop-out cylinder	●			●	●	●
Sold less cylinder	●			●	●	●
<b>All Padlocks</b>						
UL437 Listing & BHMA Certification for high security	●					
Easily integrated into master key systems for key security and convenience	●	●	●			
Patented key control to protect against unauthorized duplication	●	●	●			

## Medeco<sup>3</sup> Premium High Security

For effective mechanical protection against most forms of attack as well as protection against unauthorized duplicate keys, Medeco<sup>3</sup> cylinders are recommended. Security features including hardened steel components, pins that must be elevated, rotated, and interact with both a sidebar and a slider, and additional pick resistant features make Medeco<sup>3</sup> the cylinder of choice to protect people, property and information.

## Medeco<sup>3</sup> BiLevel Patented Key Control

Medeco<sup>3</sup> BiLevel cylinders may be incorporated into a master key system with Medeco<sup>3</sup> high security, offering protection against all types of attack where needed, and patented key control cylinders for areas requiring less protection. BiLevel cylinders offer patented control against unauthorized duplication of keys without the additional security features protecting against force or surreptitious attack.

## Medeco X4 Patented Key Control

Medeco X4 cylinders offer patented control against unauthorized duplication of keys without the additional security features protecting against force or surreptitious attack.

## Loss & Liability Control

Many of the cylinders in this section are also available with an eCylinder loss & liability control solution. See the eCylinder section for more details.

## How to Order The Protector II Padlock:

1

50047320  
base part #

Refer to page 151 for descriptions and technical specifications to find the corresponding base part number.

2

T  
cylinder

– = Original

T = Medeco<sup>3</sup>

W = Biaxial

S = M<sup>3</sup> CLIQ

G = Medeco XT

3

LT  
keyway

Insert keyway if known or contact Customer Service for help.

4

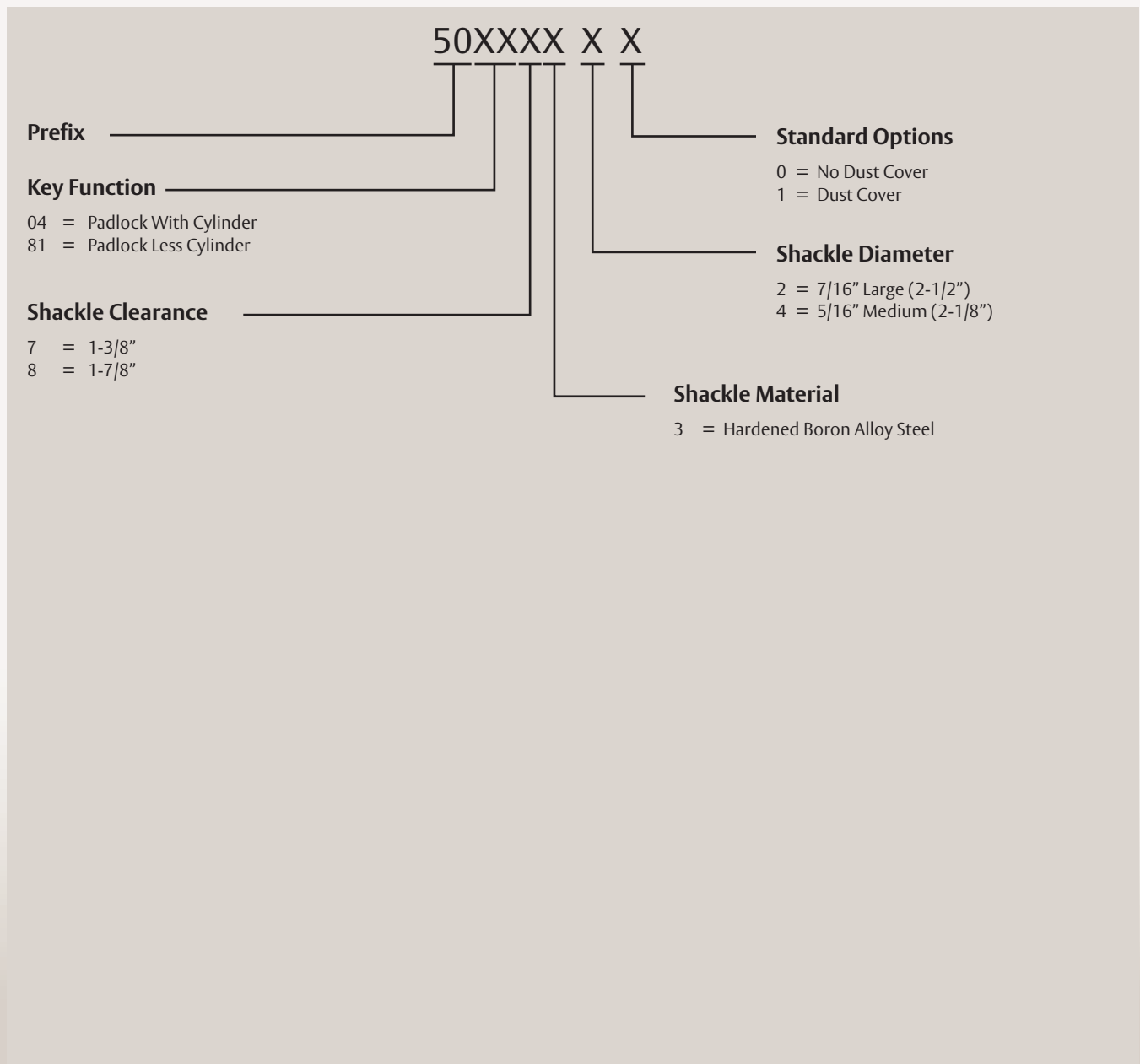
S  
pinning

S =  
Sub-Assembled  
(Uncombined)  
No additional information needed

P =  
Pinned (Combined)  
Keyed alike (KA)  
Keyed different (KD)  
2 keys per cylinder

M =  
Master Keyed  
Provide specific pinning or contact Customer Service for support  
Must specify quantity for keys.

### BUILD A PROTECTOR II PADLOCK BASE PART #



# Protector II Series Padlocks

The Protector II Series padlock is made of durable, industrial grade stainless steel and offers excellent resistance to harsh weather and extreme conditions.

The hardened boron alloy steel shackles stand up to physical attack, providing strong resistance against cutting, sawing and prying. The patented Medeco<sup>3</sup> mechanical cylinder resists picking, drilling and other sophisticated forms of physical attack. Also available in eCylinder formats for Loss and Liability Control.



## Patented Key Control

Protects against unauthorized duplication of keys.



## Special Angled Key Cuts

Requires a special key cutting machine and access to Medeco specific blanks, available in a variety of restrictions to support every need.



## Can Be Master Keyed

Medeco Protector II Padlocks can be master keyed into a system containing Medeco<sup>3</sup> mechanical as well as M<sup>3</sup> CLIQ or XT eCylinders.



## Protection From Shackle Attack

Hardened boron alloy steel shackles (5/16" and 7/16" diameters) provide strong resistance against cutting, sawing and prying. Available in both 1 3/8" and 1 7/8" lengths.



## Proprietary Deadlocking Shackle

Unique deadlocking shackle locking mechanism for resistance to physical attack.



## Weather Resistant

Body made of cast stainless steel to provide excellent resistance in harsh and extreme weather conditions.



## Protection From Physical Attack

Medeco<sup>3</sup> cylinders are UL 437 listed and resists drilling, picking and other forms of physical attack.



## Picking and Bumping Protection

Medeco<sup>3</sup> cylinders use a sidebar that prevents the key from rotating until the tumbler pins are elevated, rotated and aligned in the correct position. This feature protects against bumping and picking attacks.

- All Medeco<sup>®</sup> cylinders are constructed of durable machined brass components, designed to last the life of your equipment.
- Patented Medeco<sup>3</sup> keys may only be duplicated by Medeco<sup>®</sup> or an authorized Medeco<sup>®</sup> service outlet, and only at your request.
- Boron alloy steel shackle which protects against cutting and pulling attacks.
- Locks can be keyed alike, keyed different, or master keyed depending on your specific needs.

## Applications:

The Medeco<sup>®</sup> Protector II padlocks can be used in a variety of different indoor or outdoor applications where high security and key control are a primary concern.

## Technical Features:

- Uses key retaining operation.
- Uses a dedicated 6 pin KIK/KIL cylinder that can be pinned to 5.

## Warranty:

Warranted for two (2) years against manufacturer's defects. See the Medeco<sup>®</sup> limited warranty for full details.

## Finishes:

The padlock comes in a standard industrial stainless steel finish and the cylinders are furnished in the satin brass finish.

## Available Key Technologies:

### Mechanical:

- Medeco<sup>3</sup>

### eCylinder:

- M<sup>3</sup> CLIQ
- Medeco XT

## Benefits:

- Hardened stainless steel inserts inside the cylinder provide the ultimate defense against drilling and other forms of physical attack.
- Unique elevating and rotating tumbler pin system is virtually pick proof.

**Protector II Series Padlocks**

Description	Part Number	M <sup>3</sup>	BiLevel	X4	Biax/Orig	KeyMark	eCyl
Large Body - 7/16" dia shackle, Less Cyl, 1 3/8" clearance	50-81732						
Large Body - 7/16" dia shackle, Less Cyl, 1 3/8" clearance, Dust cover	50-817321						
Large Body - 7/16" dia shackle, Less Cyl, 1 7/8" clearance	50-81832						
Large Body - 7/16" dia shackle, Less Cyl, 1 7/8" clearance, Dust cover	50-818321						
Med Body - 5/16" dia shackle, Less Cyl, 1 3/8" clearance	50-81734						
Med Body - 5/16" dia shackle, Less Cyl, 1 3/8" clearance, Dust cover	50-817341						
Med Body - 5/16" dia shackle, Less Cyl, 1 7/8" clearance	50-81834						
Med Body - 5/16" dia shackle, Less Cyl, 1 7/8" clearance, Dust cover	50-818341						
Large Body - 7/16" dia shackle, 1 3/8" clearance	5004732 (P) 5004732 (S)						
Large Body - 7/16" dia shackle, 1 3/8" clearance, Dust cover	50047321 (P) 50047321 (S)						
Large Body - 7/16" dia shackle, 1 7/8" clearance	5004832 (P) 5004832 (S)						
Large Body - 7/16" dia shackle, 1 7/8" clearance, Dust cover	50048321 (P) 50048321 (S)						
Med Body - 5/16" dia shackle, 1 3/8" clearance	5004734 (P) 5004734 (S)						
Med Body - 5/16" dia shackle, 1 3/8" clearance, Dust cover	50047341 (P) 50047341 (S)						
Med Body - 5/16" dia shackle, 1 7/8" clearance	5004834 (P) 5004834 (S)						
Med Body - 5/16" dia shackle, 1 7/8" clearance, Dust cover	50048341 (P) 50048341 (S)						

**Protector II Series Padlock Parts**

Description	Part Number	Price
Disk For Standard Key In Knob Cylinder	CP-171011	
Disk For CLIQ Cylinder	CP-171021	
Disk For Medeco XT Cylinder	CP-171031	

**Protector II Series Padlock Cylinder**

Description	Part Number	Price
KIK style cylinder for Protector II	500020	

## How to Order System Series Padlocks:

1

5451500  
base part #

Refer to pages 154-159 for descriptions and technical specifications to find the corresponding base part number.

2

T  
cylinder

– = Original

T = Medeco<sup>3</sup>

W = Biaxial

J = Medeco<sup>3</sup> BiLevel

C = Classic CLIQ

N = Medeco X4

G = Medeco XT

K = Medeco KM

3

06  
finish

Insert 06 for Satin Brass finish.

4

LT  
keyway

Insert keyway if known or contact Customer Service for help.

5

S  
pinning

S =

Sub-Assembled

(Uncombined)

No additional information needed

P =

Pinned (Combined)

Keyed alike (KA)

Keyed different (KD)

2 keys per cylinder

M =

Master Keyed

Provide specific pinning or contact Customer Service for support

Must specify quantity for keys.

### BUILD A SYSTEM SERIES PADLOCK BASE PART #

**54XXXX X X**

<p><b>Prefix</b> _____</p> <p><b>Shackle (Diameter), Feature, Clearance</b> _____</p> <p>315 = 5/16" Diameter, Weather, 1 1/8" SFIC  31F = 5/16" Diameter, Weather, 2 3/8" SFIC  325 = 5/16" Diameter, Shrouded, 3/4" SFIC  335 = 5/16" Diameter, Weather, 1 1/8" SFIC 7 Pin  33F = 5/16" Diameter, Weather, 2 3/8" SFIC 7 Pin  345 = 5/16" Diameter, Shrouded, 3/4" SFIC 7 Pin  415 = 7/16" Diameter, Weather, 1 3/8" SFIC  41F = 7/16" Diameter, Weather, 1 7/8" SFIC  425 = 7/16" Diameter, Shrouded, 3/4" SFIC  435 = 7/16" Diameter, Weather, 1 3/8" SFIC 7 Pin  43F = 7/16" Diameter, Weather, 1 7/8" SFIC 7 Pin  445 = 7/16" Diameter, Shrouded, 3/4" SFIC 7 Pin  515 = 5/16" Diameter, Weather, 1 1/8" KIK  51F = 5/16" Diameter, Weather, 2 3/8" KIK  525 = 5/16" Diameter, Shrouded, 3/4" KIK  615 = 5/16" Diameter, Weather, 1 1/8" LFIC  61F = 5/16" Diameter, Weather, 2 3/8" LFIC  625 = 5/16" Diameter, Shrouded, 3/4" LFIC  715 = 7/16" Diameter, Weather, 1 3/8" KIK  71F = 7/16" Diameter, Weather, 1 7/8" KIK  725 = 7/16" Diameter, Shrouded, 3/4" KIK  815 = 7/16" Diameter, Weather, 1 3/8" LFIC  81F = 7/16" Diameter, Weather, 1 7/8" LFIC  825 = 7/16" Diameter, Shrouded, 3/4" LFIC</p>	<p><b>Standard Options</b></p> <p>Blank = None  T = Thick Head (SFIC Only)</p> <p><b>Shackle Material</b></p> <p>0 = Boron Alloy Steel  1 = Stainless Steel</p> <p><b>Key Function</b></p> <p>0 = Non-Key Retaining  K = Less Cylinder (Key Retaining)  L = Less Cylinder (Non-Key Retaining)  R = Key Retaining</p>
---	--

# System Series Padlocks

The Medeco® System Series padlock offers a high security solution for a multitude of applications and is available in two distinctive body styles, an indoor/outdoor weather resistant design or with a shrouded shackle. Both models utilize a boron alloy steel shackle which provides protection against cutting and increased tensile strength to resist pulling attacks. The boron alloy steel also ensures that the shackle has an exceptional degree of ductility and is not brittle. The cylinder itself uses hardened, stainless steel inserts to provide the ultimate defense against drilling, pulling and other forms of vandal attack. The Medeco<sup>3</sup> unique design provides triple locking action, making the locks virtually pick proof. All Medeco<sup>3</sup> keys and locks are protected under patent, trademark, and copyright laws. Medeco<sup>3</sup> keys may only be duplicated by Medeco® or by a Medeco® authorized sales outlet, and only at your request.



## Patented Key Control

Protects against unauthorized duplication of your keys.



## Protection From Physical Attack

Medeco<sup>3</sup> padlock cylinders are UL 437 listed and stand up to drilling, picking and other forms of physical attack.



## Proprietary Deadlocking Shackle

Boron alloy steel shackles protect against cutting and pulling attacks.



## Can Be Master Keyed

Medeco System Series Padlocks can be master keyed into a system containing Medeco BiLevel and Medeco<sup>3</sup> mechanical as well as Medeco<sup>3</sup> CLIQ eCylinders.



## Available in eCylinder

System Series Padlocks are also available with Medeco eCylinders for Loss & Liability control.



## Special Angle Cut Keys

Requires a special key cutting machine and access to Medeco specific blanks, available in a variety of restrictions to support every need.



## Picking and Bumping Protection

Medeco<sup>3</sup> cylinders use a sidebar that prevent the key from rotating until it is elevated, rotated and aligned in the correct position. This feature protects against bumping and picking attacks.

## Technical Features:

- Available with either a 5/16 inch or a 7/16 inch shackle diameter.
- Available in Indoor/Outdoor weather resistant design or with a shrouded shackle.
- Extended shackles available for Indoor/Outdoor padlocks only.
- The shrouded shackle design provides extra shackle protection against cutting attacks.
- All Medeco® cylinders are constructed of durable machined brass components, designed to last the life of your equipment.
- Boron alloy steel shackle which protects against cutting and pulling attacks.
- Available in a variety of different shackle lengths.

## Applications:

Used in a variety of different indoor or outdoor applications where high security and key control are a primary concern.

## Warranty:

Warranted for two (2) years against manufacturer's defects. See the Medeco® limited warranty for full details.

## Finishes:

The padlock comes in a standard black body cover and the cylinders are furnished in satin brass finish.

## Available Key Technologies:

### Mechanical:

- Medeco<sup>3</sup>
- Medeco<sup>3</sup> BiLevel
- Medeco X4

### eCylinder:

- M<sup>3</sup> CLIQ
- Classic CLIQ
- Medeco XT
- Medeco X4 CLIQ

**Indoor/Outdoor Padlock, 5/16" Shackle -KIK**

Description	Part Number	M <sup>3</sup>	BiLevel	X4	Biax/Orig	KeyMark	eCyl
Indoor/Outdoor Padlock, Non-Key Retaining, 1 1/8" Shackle Clearance, With Cylinder	5451500 (P)						●
	5451500 (S)						
Indoor/Outdoor Padlock, Key Retaining, 1 1/8" Shackle Clearance, With Cylinder	54515R0 (P)						●
	54515R0 (S)						
Indoor/Outdoor Padlock, Non-Key Retaining, 2 3/8" Shackle Clearance, With Cylinder	5451F00 (P)						●
	5451F00 (S)						
Indoor/Outdoor Padlock, Key Retaining, 2 3/8" Shackle Clearance, With Cylinder	5451FR0 (P)						●
	5451FR0 (S)						
Indoor/Outdoor Padlock, Key Retaining, 1 1/8" Shackle Clearance, Less Cylinder	54515K0						
Indoor/Outdoor Padlock, Non-Key Retaining, 1 1/8" Shackle Clearance, Less Cylinder	54515L0						
Indoor/Outdoor Padlock, Key Retaining, 2 3/8" Shackle Clearance, Less Cylinder	5451FK0						
Indoor/Outdoor Padlock, Non-Key Retaining, 2 3/8" Shackle Clearance, Less Cylinder	5451FL0						

**Indoor/Outdoor Padlock, 5/16" Shackle -6 Pin LFIC**

Description	Part Number	M <sup>3</sup>	BiLevel	X4	Biax/Orig	KeyMark	eCyl
Indoor/Outdoor Padlock, Non-Key Retaining, 1 1/8" Shackle Clearance, With Cylinder	5461500 (P)						
	5461500 (S)						
Indoor/Outdoor Padlock, Key Retaining, 1 1/8" Shackle Clearance, With Cylinder	54615R0 (P)						
	54615R0 (S)						
Indoor/Outdoor Padlock, Non-Key Retaining, 2 3/8" Shackle Clearance, With Cylinder	5461F00 (P)						
	5461F00 (S)						
Indoor/Outdoor Padlock, Key Retaining, 2 3/8" Shackle Clearance, With Cylinder	5461FR0 (P)						
	5461FR0 (S)						
Indoor/Outdoor Padlock, Key Retaining, 1 1/8" Shackle Clearance, Less Cylinder	54615K0						
Indoor/Outdoor Padlock, Non-Key Retaining, 1 1/8" Shackle Clearance, Less Cylinder	54615L0						
Indoor/Outdoor Padlock, Key Retaining, 2 3/8" Shackle Clearance, Less Cylinder	5461FK0						
Indoor/Outdoor Padlock, Non-Key Retaining, 2 3/8" Shackle Clearance, Less Cylinder	5461FL0						

\*\*Refer to the eCylinder section for more detail on specific technologies available and pricing. Technologies are represented by the following letters:

T = Medeco<sup>3</sup>, S = M<sup>3</sup> CLIQ, J = Medeco<sup>3</sup> BiLevel, W = Biaxial, V = Medeco Biaxial CLIQ, K = Medeco KM, N = Medeco X4, C = Classic CLIQ, M = Medeco X4 CLIQ, "—" = Original, Z = Medeco Original KW CLIQ, G = Medeco XT \*\*\*See key section for surcharges for custom coined cut keys or special stamping requirements.

**Note:** (P) refers to **Pinned** and (S) to **Sub-Pinned** at the end of each part string in the price book.

**Indoor/Outdoor Padlock, 5/16" Shackle -6 Pin SFIC**

Description	Part Number	M <sup>3</sup>	BiLevel	X4	Biax/Orig	KeyMark	eCyl
Indoor/Outdoor Padlock, Non-Key Retaining, 1 1/8" Shackle Clearance, With Cylinder	5431500 (P) 5431500 (S)						
Indoor/Outdoor Padlock, Key Retaining, 1 1/8" Shackle Clearance, With Cylinder	54315R0 (P) 54315R0 (S)						
Indoor/Outdoor Padlock, Non-Key Retaining, 2 3/8" Shackle Clearance, With Cylinder	5431F00 (P) 5431F00 (S)						
Indoor/Outdoor Padlock, Key Retaining, 2 3/8" Shackle Clearance, With Cylinder	5431FR0 (P) 5431FR0 (S)						

**Indoor/Outdoor Padlock, 5/16" Shackle -7 Pin SFIC**

Description	Part Number	M <sup>3</sup>	BiLevel	X4	Biax/Orig	KeyMark	eCyl
Indoor/Outdoor Padlock, Non-Key Retaining, 1 1/8" Shackle Clearance, With Cylinder	5433500 (P) 5433500 (S)						
Indoor/Outdoor Padlock, Key Retaining, 1 1/8" Shackle Clearance, With Cylinder	54335R0 (P) 54335R0 (S)						
Indoor/Outdoor Padlock, Non-Key Retaining, 2 3/8" Shackle Clearance, With Cylinder	5433F00 (P) 5433F00 (S)						
Indoor/Outdoor Padlock, Key Retaining, 2 3/8" Shackle Clearance, With Cylinder	5433FR0 (P) 5433FR0 (S)						

**Indoor/Outdoor Padlock, 5/16" Shackle -Less SFIC**

Description	Part Number	M <sup>3</sup>	BiLevel	X4	Biax/Orig	KeyMark	eCyl
Indoor/Outdoor Padlock, Key Retaining, 1 1/8" Shackle Clearance, Less Cylinder	54315K0						
Indoor/Outdoor Padlock, Non-Key Retaining, 1 1/8" Shackle Clearance, Less Cylinder	54315L0						
Indoor/Outdoor Padlock, Key Retaining, 2 3/8" Shackle Clearance, Less Cylinder	5431FK0						
Indoor/Outdoor Padlock, Non-Key Retaining, 2 3/8" Shackle Clearance, Less Cylinder	5431FL0						

\*\*Refer to the eCylinder section for more detail on specific technologies available and pricing. Technologies are represented by the following letters:  
T = Medeco<sup>3</sup>, S = M<sup>3</sup> CLIQ, J = Medeco<sup>3</sup> BiLevel, W = Biaxial, V = Medeco Biaxial CLIQ, K = Medeco KM, N = Medeco X4, C = Classic CLIQ, M = Medeco X4 CLIQ,  
"-" = Original, Z = Medeco Original KW CLIQ, G = Medeco XT \*\*\*See key section for surcharges for custom coined cut keys or special stamping requirements.  
**Note:** (P) refers to **Pinned** and (S) to **Sub-Pinned** at the end of each part string in the price book.



**Indoor/Outdoor Padlock, 7/16" Shackle -KIK**

Description	Part Number	M <sup>3</sup>	BiLevel	X4	Biax/Orig	KeyMark	eCyl
Indoor/Outdoor Padlock, Non-Key Retaining, 1 3/8" Shackle Clearance, With Cylinder	5471500 (P)						●
	5471500 (P)						
Indoor/Outdoor Padlock, Key Retaining, 1 3/8" Shackle Clearance, With Cylinder	54715R0 (P)						●
	54715R0 (P)						
Indoor/Outdoor Padlock, Non-Key Retaining, 1 7/8" Shackle Clearance, With Cylinder	5471F00 (P)						●
	5471F00 (P)						
Indoor/Outdoor Padlock, Key Retaining, 1 7/8" Shackle Clearance, With Cylinder	5471FR0 (P)						●
	5471FR0 (P)						
Indoor/Outdoor Padlock, Key Retaining, 1 3/8" Shackle Clearance, Less Cylinder	54715K0						
Indoor/Outdoor Padlock, Non-Key Retaining, 1 3/8" Shackle Clearance, Less Cylinder	54715L0						
Indoor/Outdoor Padlock, Key Retaining, 1 7/8" Shackle Clearance, Less Cylinder	5471FK0						
Indoor/Outdoor Padlock, Non-Key Retaining, 1 7/8" Shackle Clearance, Less Cylinder	5471FL0						

**Indoor/Outdoor Padlock, 7/16" Shackle -6 Pin LFIC**

Description	Part Number	M <sup>3</sup>	BiLevel	X4	Biax/Orig	KeyMark	eCyl
Indoor/Outdoor Padlock, Non-Key Retaining, 1 3/8" Shackle Clearance, With Cylinder	5481500 (P)						
	5481500 (P)						
Indoor/Outdoor Padlock, Key Retaining, 1 3/8" Shackle Clearance, With Cylinder	54815R0 (P)						
	54815R0 (P)						
Indoor/Outdoor Padlock, Non-Key Retaining, 1 7/8" Shackle Clearance, With Cylinder	5481F00 (P)						
	5481F00 (P)						
Indoor/Outdoor Padlock, Key Retaining, 1 7/8" Shackle Clearance, With Cylinder	5481FR0 (P)						
	5481FR0 (P)						
Indoor/Outdoor Padlock, Key Retaining, 1 3/8" Shackle Clearance, Less Cylinder	54815K0						
Indoor/Outdoor Padlock, Non-Key Retaining, 1 3/8" Shackle Clearance, Less Cylinder	54815L0						
Indoor/Outdoor Padlock, Key Retaining, 1 7/8" Shackle Clearance, Less Cylinder	5481FK0						
Indoor/Outdoor Padlock, Non-Key Retaining, 1 7/8" Shackle Clearance, Less Cylinder	5481FL0						

\*\*Refer to the eCylinder section for more detail on specific technologies available and pricing. Technologies are represented by the following letters:

T = Medeco<sup>3</sup>, S = M<sup>3</sup> CLIQ, J = Medeco<sup>3</sup> BiLevel, W = Biaxial, V = Medeco Biaxial CLIQ, K = Medeco KM, N = Medeco X4, C = Classic CLIQ, M = Medeco X4 CLIQ, " = Original, Z = Medeco Original KW CLIQ, G = Medeco XT \*\*\*See key section for surcharges for custom coined cut keys or special stamping requirements.

**Note:** (P) refers to **Pinned** and (S) to **Sub-Pinned** at the end of each part string in the price book.

**Indoor/Outdoor Padlock, 7/16" Shackle - 6 Pin SFIC**

Description	Part Number	M <sup>3</sup>	BiLevel	X4	Biax/Orig	KeyMark	eCyl
Indoor/Outdoor Padlock, Non-Key Retaining, 1 3/8" Shackle Clearance, With Cylinder	5441500 (P) 5441500 (S)						
Indoor/Outdoor Padlock, Key Retaining, 1 3/8" Shackle Clearance, With Cylinder	54415R0 (P) 54415R0 (S)						
Indoor/Outdoor Padlock, Non-Key Retaining, 1 7/8" Shackle Clearance, With Cylinder	5441F00 (P) 5441F00 (S)						
Indoor/Outdoor Padlock, Key Retaining, 1 7/8" Shackle Clearance, With Cylinder	5441FR0 (P) 5441FR0 (S)						

**Indoor/Outdoor Padlock, 7/16" Shackle - 7 Pin SFIC**

Description	Part Number	M <sup>3</sup>	BiLevel	X4	Biax/Orig	KeyMark	eCyl
Indoor/Outdoor Padlock, Non-Key Retaining, 1 3/8" Shackle Clearance With Cylinder	5443500 (P) 5443500 (S)						
Indoor/Outdoor Padlock, Key Retaining, 1 3/8" Shackle Clearance, With Cylinder	54435R0 (P) 54435R0 (S)						
Indoor/Outdoor Padlock, Non-Key Retaining, 1 7/8" Shackle Clearance, With Cylinder	5443F00 (P) 5443F00 (S)						
Indoor/Outdoor Padlock, Key Retaining, 1 7/8" Shackle Clearance, With Cylinder	5443FR0 (P) 5443FR0 (S)						

**Indoor/Outdoor Padlock, 7/16" Shackle - Less SFIC**

Description	Part Number	M <sup>3</sup>	BiLevel	X4	Biax/Orig	KeyMark	eCyl
Indoor/Outdoor Padlock, Key Retaining, 1 3/8" Shackle Clearance, Less Cylinder	54415K0						
Indoor/Outdoor Padlock, Non-Key Retaining, 1 3/8" Shackle Clearance, Less Cylinder	54415L0						
Indoor/Outdoor Padlock, Key Retaining, 1 7/8" Shackle Clearance, Less Cylinder	5441FK0						
Indoor/Outdoor Padlock, Non-Key Retaining, 1 7/8" Shackle Clearance, Less Cylinder	5441FL0						

**Shrouded Padlock, 5/16" Shackle - KIK**

Description	Part Number	M <sup>3</sup>	BiLevel	X4	Biax/Orig	KeyMark	eCyl
Shrouded Padlock, Non-Key Retaining, 3/4" Shackle Clearance, With Cylinder	5452500 (P) 5452500 (S)						
Shrouded Padlock, Key Retaining, 3/4" Shackle Clearance, With Cylinder	54525R0 (P) 54525R0 (S)						
Shrouded Padlock, Key Retaining, 3/4" Shackle Clearance, Less Cylinder	54525K0						
Shrouded Padlock, Non-Key Retaining, 3/4" Shackle Clearance, Less Cylinder	54525L0						

\*\*Refer to the eCylinder section for more detail on specific technologies available and pricing. Technologies are represented by the following letters:  
T = Medeco<sup>3</sup>, S = M<sup>3</sup> CLIQ, J = Medeco<sup>3</sup> BiLevel, W = Biaxial, V = Medeco Biaxial CLIQ, K = Medeco KM, N = Medeco X4, C = Classic CLIQ, M = Medeco X4 CLIQ,  
"." = Original, Z = Medeco Original KW CLIQ, G = Medeco XT \*\*\*See key section for surcharges for custom coined cut keys or special stamping requirements.  
**Note:** (P) refers to **Pinned** and (S) to **Sub-Pinned** at the end of each part string in the price book.

**Shrouded Padlock, 5/16" Shackle - 6 Pin LFIC**

Description	Part Number	M <sup>3</sup>	BiLevel	X4	Biax/Orig	KeyMark	eCyl
Shrouded Padlock, Non-Key Retaining, 3/4" Shackle Clearance, With Cylinder	5462500 (P) 5462500 (S)						
Shrouded Padlock, Key Retaining, 3/4" Shackle Clearance, With Cylinder	54625R0 (P) 54625R0 (S)						
Shrouded Padlock, Key Retaining, 3/4" Shackle Clearance, Less Cylinder	54625K0						
Shrouded Padlock, Non-Key Retaining, 3/4" Shackle Clearance, Less Cylinder	54625L0						

**Shrouded Padlock, 5/16" Shackle - 6 Pin SFIC**

Description	Part Number	M <sup>3</sup>	BiLevel	X4	Biax/Orig	KeyMark	eCyl
Shrouded Padlock, Non-Key Retaining, 3/4" Shackle Clearance, With Cylinder	5432500 (P) 5432500 (S)						
Shrouded Padlock, Key Retaining, 3/4" Shackle Clearance, With Cylinder	54325R0 (P) 54325R0 (S)						

**Shrouded Padlock, 5/16" Shackle - 7 Pin SFIC**

Description	Part Number	M <sup>3</sup>	BiLevel	X4	Biax/Orig	KeyMark	eCyl
Shrouded Padlock, Non-Key Retaining, 3/4" Shackle Clearance, With Cylinder	5434500 (P) 5434500 (S)						
Shrouded Padlock, Key Retaining, 3/4" Shackle Clearance, With Cylinder	54345R0 (P) 54345R0 (S)						

**Shrouded Padlock, 5/16" Shackle - Less SFIC**

Description	Part Number	M <sup>3</sup>	BiLevel	X4	Biax/Orig	KeyMark	eCyl
Shrouded Padlock, Key Retaining, 3/4" Shackle Clearance, Less Cylinder	54325K0						
Shrouded Padlock, Non-Key Retaining, 3/4" Shackle Clearance, Less Cylinder	54325L0						

\*\*Refer to the eCylinder section for more detail on specific technologies available and pricing. Technologies are represented by the following letters:  
T = Medeco<sup>3</sup>, S = M<sup>3</sup> CLIQ, J = Medeco<sup>3</sup> BiLevel, W = Biaxial, V = Medeco Biaxial CLIQ, K = Medeco KM, N = Medeco X4, C = Classic CLIQ, M = Medeco X4 CLIQ,  
“-” = Original, Z = Medeco Original KW CLIQ, G = Medeco XT \*\*\*See key section for surcharges for custom coined cut keys or special stamping requirements.  
**Note:** (P) refers to **Pinned** and (S) to **Sub-Pinned** at the end of each part string in the price book.

**Shrouded Padlock, 7/16" Shackle - KIK**

Description	Part Number	M <sup>3</sup>	BiLevel	X4	Biax/Orig	KeyMark	eCyl
Shrouded Padlock, Non-Key Retaining, 3/4" Shackle Clearance, With Cylinder	5472500 (P)						
	5472500 (S)						
Shrouded Padlock, Key Retaining, 3/4" Shackle Clearance, With Cylinder	54725R0 (P)						
	54725R0 (S)						
Shrouded Padlock, Key Retaining, 3/4" Shackle Clearance, Less Cylinder	54725K0						
Shrouded Padlock, Non-Key Retaining, 3/4" Shackle Clearance, Less Cylinder	54725L0						

**Shrouded Padlock, 7/16" Shackle - 6 Pin LFIC**

Description	Part Number	M <sup>3</sup>	BiLevel	X4	Biax/Orig	KeyMark	eCyl
Shrouded Padlock, Non-Key Retaining, 3/4" Shackle Clearance, With Cylinder	5482500 (P)						
	5482500 (S)						
Shrouded Padlock, Key Retaining, 3/4" Shackle Clearance, With Cylinder	54825R0 (P)						
	54825R0 (S)						
Shrouded Padlock, Key Retaining, 3/4" Shackle Clearance, Less Cylinder	54825K0						
Shrouded Padlock, Non-Key Retaining, 3/4" Shackle Clearance, Less Cylinder	54825L0						

**Shrouded Padlock, 7/16" Shackle - 6 Pin SFIC**

Description	Part Number	M <sup>3</sup>	BiLevel	X4	Biax/Orig	KeyMark	eCyl
Shrouded Padlock, Non-Key Retaining, 3/4" Shackle Clearance, With Cylinder	5442500 (P)						
	5442500 (S)						
Shrouded Padlock, Key Retaining, 3/4" Shackle Clearance, With Cylinder	54425R0 (P)						
	54425R0 (S)						

**Shrouded Padlock, 7/16" Shackle - 6 Pin SFIC**

Description	Part Number	M <sup>3</sup>	BiLevel	X4	Biax/Orig	KeyMark	eCyl
Shrouded Padlock, Non-Key Retaining, 3/4" Shackle Clearance, With Cylinder	5444500 (P)						
	5444500 (S)						
Shrouded Padlock, Key Retaining, 3/4" Shackle Clearance, With Cylinder	54445R0 (P)						
	54445R0 (S)						

**Shrouded Padlock, 7/16" Shackle - Less SFIC**

Description	Part Number	M <sup>3</sup>	BiLevel	X4	Biax/Orig	KeyMark	eCyl
Shrouded Padlock, Key Retaining, 3/4" Shackle Clearance, Less Cylinder	54425K0						
Shrouded Padlock, Non-Key Retaining, 3/4" Shackle Clearance, Less Cylinder	54425L0						

\*\*Refer to the eCylinder section for more detail on specific technologies available and pricing. Technologies are represented by the following letters:  
T = Medeco<sup>3</sup>, S = M<sup>3</sup> CLIQ, J = Medeco<sup>3</sup> BiLevel, W = Biaxial, V = Medeco Biaxial CLIQ, K = Medeco KM, N = Medeco X4, C = Classic CLIQ, M = Medeco X4 CLIQ,  
"-" = Original, Z = Medeco Original KW CLIQ, G = Medeco XT \*\*\*See key section for surcharges for custom coined cut keys or special stamping requirements.  
**Note:** (P) refers to **Pinned** and (S) to **Sub-Pinned** at the end of each part string in the price book.

**52 Series Padlock, 5/16" Shackle**

Description	Part Number	M <sup>3</sup>	BiLevel	X4	Biax/Orig	KeyMark	eCyl
1 1/8" Clearance, Boron Alloy Shackle	526201 (P)						
	526201 (S)						
2 3/8" Clearance, Boron Alloy Shackle	526301 (P)						
	526301 (S)						
1 1/8" Clearance, Boron Alloy Shackle, Less Cylinder	526200						
2 3/8" Clearance, Boron Alloy Shackle, Less Cylinder	526300						
1 1/8" Clearance, Stainless Steel Shackle	526211 (P)						
	526211 (S)						
2 3/8" Clearance, Stainless Steel Shackle	526311 (P)						
	526311 (S)						
1 1/8" Clearance, Stainless Steel Shackle, Less Cylinder	526210						
2 3/8" Clearance, Stainless Steel Shackle, Less Cylinder	526310						

\*Padlock body is solid brass with 26 plated finish.

**52 Series Padlock, 5/16" Shackle, Removable Core**

Description	Part Number	M <sup>3</sup>	BiLevel	X4	Biax/Orig	KeyMark	eCyl
1 1/8" Clearance, Boron Alloy Shackle, Removable Core, Less Cylinder	52-6202						
2 3/8" Clearance, Boron Alloy Shackle, Removable Core, Less Cylinder	52-6302						
1 1/8" Clearance, Stainless Steel Shackle, Removable Core, Less Cylinder	52-6212						
2 3/8" Clearance, Stainless Steel Shackle, Removable Core, Less Cylinder	52-6312						

\*Padlock body is solid brass with 26 plated finish.

Note: 52-6 Series padlocks use a 5 pin/4 level 60 Series cylinder and can be keyed into a system utilizing cam and switch locks.

\*\*Refer to the eCylinder section for more detail on specific technologies available and pricing. Technologies are represented by the following letters:  
T = Medeco<sup>3</sup>, S = M<sup>3</sup> CLIQ, J = Medeco<sup>3</sup> BiLevel, W = Biaxial, V = Medeco Biaxial CLIQ, K = Medeco KM, N = Medeco X4, C = Classic CLIQ, M = Medeco X4 CLIQ,  
"-" = Original, Z = Medeco Original KW CLIQ, G = Medeco XT \*\*\*See key section for surcharges for custom coined cut keys or special stamping requirements.  
**Note: (P)** refers to **Pinned** and **(S)** to **Sub-Pinned** at the end of each part string in the price book.

**52 Series Padlock, 7/16" Shackle**

Description	Part Number	M <sup>3</sup>	BiLevel	X4	Biax/Orig	KeyMark	eCyl
1 3/8" Clearance, Boron Alloy Shackle	526001 (P)						
	526001 (S)						
1 7/8" Clearance, Boron Alloy Shackle	526101 (P)						
	526101 (S)						
1 3/8" Clearance, Boron Alloy Shackle, Less Cylinder	526000						
1 7/8" Clearance, Boron Alloy Shackle, Less Cylinder	526100						
1 3/8" Clearance, Stainless Steel Shackle	526011 (P)						
	526011 (S)						
1 7/8" Clearance, Stainless Steel Shackle	526111 (P)						
	526111 (S)						
1 3/8" Clearance, Stainless Steel Shackle, Less Cylinder	526010						
1 7/8" Clearance, Stainless Steel Shackle, Less Cylinder	526110						

\*Padlock body is solid brass with 26 plated finish.

**52 Series Padlock, 7/16" Shackle, Removable Core**

Description	Part Number	M <sup>3</sup>	BiLevel	X4	Biax/Orig	KeyMark	eCyl
1 3/8" Clearance, Boron Alloy Shackle, Removable Core, Less Cylinder	526002						
1 7/8" Clearance, Boron Alloy Shackle, Removable Core, Less Cylinder	526102						
1 3/8" Clearance, Stainless Steel Shackle, Removable Core, Less Cylinder	526012						
1 7/8" Clearance, Stainless Steel Shackle, Removable Core, Less Cylinder	526112						

\*Padlock body is solid brass with 26 plated finish.

52 series Padlocks Cover Options: 00 = Standard, 01 = Case Cover, 10 = Dust Cover

Note: 52-6 Series padlocks use 5 pin/4 level 60 Series cylinders and can be keyed into a system utilizing cam and switch locks.

\*\*Refer to the eCylinder section for more detail on specific technologies available and pricing. Technologies are represented by the following letters:  
T = Medeco<sup>3</sup>, S = M<sup>3</sup> CLIQ, J = Medeco<sup>3</sup> BiLevel, W = Biaxial, V = Medeco Biaxial CLIQ, K = Medeco KM, N = Medeco X4, C = Classic CLIQ, M = Medeco X4 CLIQ,  
"." = Original, Z = Medeco Original KW CLIQ, G = Medeco XT \*\*\*See key section for surcharges for custom coined cut keys or special stamping requirements.  
**Note: (P)** refers to **Pinned** and **(S)** to **Sub-Pinned** at the end of each part string in the price book.

## 50 Series Brass Body Padlocks

Description	Part Number	M <sup>3</sup>	BiLevel	X4	Biax/Orig	KeyMark	eCyl
I/C Core Brass Padlock, 2 1/4" Shackle Clearance, Hardened Steel, Key Retaining	5002201 (P) 5002201 (S)						
I/C Core Brass Padlock, 2 1/4" Shackle Clearance, Stainless Steel, Key Retaining	5002211 (P) 5002211 (S)						
I/C Core Brass Padlock, 2 1/4" Shackle Clearance, Hardened Steel, Non-key Retaining	5003201 (P) 5003201 (S)						
I/C Core Brass Padlock, 2 1/4" Shackle Clearance, Stainless Steel, Key Retaining	5003211 (P) 5003211 (S)						
Removeable Cylinder Brass Padlock, 2 1/4" Shackle Clearance, Hardened Steel, Key Retaining	5008201 (P) 5008201 (S)						
Removeable Cylinder Brass Padlock, 2 1/4" Shackle Clearance, Stainless Steel, Key Retaining	5008211 (P) 5008211 (S)						
Removeable Cylinder Brass Padlock, 2 1/4" Shackle Clearance, Hardened Steel, Non-key Retaining	5009201 (P) 5009201 (S)						
Removeable Cylinder Brass Padlock, 2 1/4" Shackle Clearance, Stainless Steel, Non-key Retaining	5009211 (P) 5009211 (S)						
Brass Padlock, 2 1/4" Shackle Clearance, Hardened Steel, Key Retaining, Less Cylinder	50-74201						
Brass Padlock, 2 1/4" Shackle Clearance, Stainless Steel, Key Retaining, Less Cylinder	50-74211						
Brass Padlock, 2 1/4" Shackle Clearance, Hardened Steel, Non-key Retaining, Less Cylinder	50-75201						
Brass Padlock, 2 1/4" Shackle Clearance, Stainless Steel, Non-key Retaining, Less Cylinder	50-75211						

## Padlock Cylinders

Description	Part Number	M <sup>3</sup>	BiLevel	X4	Biax/Orig	KeyMark	eCyl
5 Pin Cylinder (6 pin Medeco X4) for Hockey Puck Style Padlock sold after 9/2004 (KIK style cylinder)	2001600 (P) 2001600 (S)						
6 Pin Cylinder for LFIC Medeco Padlock, for 54 Series Padlocks	320201 (P) 320201 (S)						
Interchangable Core Cylinder to fit 50 Series Brass Padlocks	320201 (P) 320201 (S)						
Removeable Cylinder to fit 50 Series Brass Padlocks (Note - only available in 06 finish)	320202 (P) 320202 (S)						
6 Pin Cylinder for KIK Medeco Padlock, for 54 Series Padlocks	510600 (P) 510600 (S)						
5 Pin Spring Bolt Cylinder (non-key retaining), for G8R Padlock	960357 (P) 960357 (S)						
5 Pin Deadbolt Cylinder (key retaining), for G8R Padlock	960358 (P) 960358 (S)						
Spacer for use with 5 Pin Cylinders, for G8R Padlock	CP-160691						
5 Pin cylinder (cam lock style) for 52-6 padlocks	66418 (P) 66418 (S)						
5 Pin Removable plug for 52-6 padlocks	66391 (P) 66391 (S)						

eCylinder Padlock Cylinders are available for many of the padlocks. Please check the eCylinder section for specific part numbers and pricing.

\*\*Refer to the eCylinder section for more detail on specific technologies available and pricing. Technologies are represented by the following letters:  
T = Medeco<sup>3</sup>, S = M<sup>3</sup> CLIQ, J = Medeco<sup>3</sup> BiLevel, W = Biaxial, V = Medeco Biaxial CLIQ, K = Medeco KM, N = Medeco X4, C = Classic CLIQ, M = Medeco X4 CLIQ,  
"." = Original, Z = Medeco Original KW CLIQ, G = Medeco XT \*\*\*See key section for surcharges for custom coined cut keys or special stamping requirements.  
**Note:** (P) refers to **Pinned** and (S) to **Sub-Pinned** at the end of each part string in the price book.

## Components

Description	Part Number	Price
Component Package for 54 Series Padlocks, NonKey Retaining. Includes CP-130510 Cylinder Extension/Actuator, Spring & Washer, CP-022030 Cylinder Retainer, CP-011511-000 Retainer Screw, CP-250140 Steel Ball Bearing	94-0199	
Cylinder Retainer Sleeve (Fits over Cylinder Bible Chamber & holds cylinder in padlock body)	CP-022030	
Retainer Screw, #6-32 UNC-2A x .312" length	CP-011511-000	
Cylinder Extension/Actuator, Non Key Retaining, Spring & Washer for 54 Series Padlocks	CP-130510	
Stainless Steel Ball Bearing for 54 Series Padlocks, .360" Diameter	CP-250140	
Cylinder Extension/Actuator, Key Retaining, for 54 Series Padlocks	CP-200720	
Chain Assembly for 50 Series Brass Padlocks	CP-280271	
Case Cover for 50 Series Brass Padlocks	CP-170250	
Shackle Spring for 50 Series Brass Padlocks	CP-030430	
Actuator Adaptor for 50 Series Brass Padlocks	CP-130101	
Locking Balls for 50 Series Brass Padlocks	CP-250040	
3/16" Cylinder Retaining Ball for 50 Series Brass Padlocks	CP-250030	
1/16" Hex Allen Wrench - Long Arm to use with 50 Series Brass Padlocks	94-0020	
Package for Sub-assembled 50 Series Brass Padlock, Includes: Set screws, retaining ball, Brass Pin Chamber Cover	94-0052	

## Shackles for Indoor/Outdoor Padlocks

Description	Boron Alloy Steel Part Number	Price	Stainless Steel Part Number	Price
Standard Shackle for 54-51 Indoor/Outdoor Padlock, 1-1/8" Shackle Clearance x 5/16" Diameter	CP-144120		CP-144180	
Extra Length Shackle for 54-51 Indoor/Outdoor Padlock, 2-3/8" Shackle Clearance x 5/16" Diameter	CP-144130		CP-144190	
Standard Shackle for 54-71 Indoor/Outdoor Padlock, 1-3/8" Shackle Clearance x 7/16" Diameter	CP-144150		CP-144210	
Extra Length Shackle for 54-71 Indoor/Outdoor Padlock, 1-7/8" Shackle Clearance x 7/16" Diameter	CP-144160		CP-144220	

## Shackles for Shrouded Padlocks

Description	Boron Alloy Steel Part Number	Price	Stainless Steel Part Number	Price
Standard Shackle for 54-52 Shrouded Padlock, 3/4" Shackle Clearance x 5/16" Diameter	CP-144110		CP-144170	
Standard Shackle for 54-72 Shrouded Padlock, 3/4" Shackle Clearance x 7/16" Diameter	CP-144140		CP-144200	

## Shackles for 50 Series Brass Padlocks

Description	Part Number	Price
2 1/4" Stainless Steel Shackle for 50 Series Brass Padlocks	CP-142543	
2 1/4" Hardened Steel Shackle for 50 Series Brass Padlocks	CP-142043	



# Hockey Puck Padlocks

Medeco® offers a variety of high security padlocks that are designed to accept both mechanical and eCylinders. The Medeco Hockey Puck style padlocks come with hardened, solid steel bodies, a shackle-less design for the highest level of protection against bolt cutter attacks, and patent protected key control. Every padlock cylinder is UL 437 Listed and can be keyed into any existing 10 series product. The Medeco<sup>3</sup> unique design provides triple locking action, making the locks virtually pick proof. All Medeco<sup>3</sup> keys and locks are protected under patent, trademark, and copyright laws. Medeco<sup>3</sup> keys may only be duplicated by Medeco or by a Medeco authorized sales outlet, and only at your request.



## Patented Key Control

Protects against unauthorized duplication of your keys.



## Protection From Physical Attack

Medeco<sup>3</sup> padlock cylinders are UL 437 listed and stand up to drilling, picking and other forms of physical attack. The Hockey Pucks shackle-less design provides the highest protection from bolt cutter attacks.



## Can Be Master Keyed

Medeco Hockey Puck Padlocks can be master keyed into existing Medeco 10 Series products.



## Available in eCylinder

Medeco's Hockey Puck Padlocks are also available with Medeco eCylinders for Loss & Liability control.



## Special Angle Cut Keys

Requires a special key cutting machine and access to Medeco specific blanks, available in a variety of restrictions to support every need.



## Picking and Bumping Protection

Medeco<sup>3</sup> cylinders use a sidebar that prevent the key from rotating until it is elevated, rotated and aligned in the correct position. This feature protects against bumping and picking attacks.

## Technical Features:

- Hardened steel body.
- 5 pin, key-in-knob cylinder.
- Requires a key to relock.
- Hardened solid steel, black chrome plated body.
- All Medeco cylinders are constructed of durable machined brass components, designed to last the life of your equipment.

## Applications:

Hockey Puck style padlocks can be used in a variety of different applications including vending, storage and transportation.

## Warranty:

Warranted for two (2) years against manufacturer's defects. See the Medeco® limited warranty for full details.

## Available Key Technologies:

### Mechanical:

- Medeco<sup>3</sup>
- Medeco<sup>3</sup> BiLevel\*
- Medeco X4\*

### eCylinder:

- Medeco XT

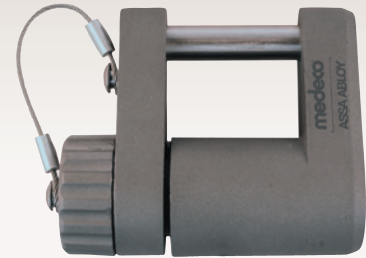
## 52-9 Series Hockey Puck Padlock

Description	Part Number	Medeco <sup>3</sup>	BiLevel	Medeco X4	eCylinder
Hockey Puck Padlock, With 5 Pin High Security or 6 Pin Medeco X4 Cylinder	5293000 (P) 5293000 (S)				
Hockey Puck Padlock, Non-Key Retaining, Less Cylinder	52930L0				

Hockey Puck uses unique cylinders and can be pinned to a door hardware key. Not available with LFIC or SFIC.

# G8R Padlocks

Medeco® offers a variety of High Security Padlocks that are designed to accept both mechanical and eCylinders. With its tough, weather resistant construction, this is the padlock of choice for extreme environments such as trailers, cargo containers, and gates. The Medeco® G8R body is constructed of solid stainless steel. You can choose from either a stainless steel shackle for maximum corrosion resistance, or hardened steel to withstand severe physical attack. Each padlock includes a weather seal cap attached by a cable. The Medeco® G8R will accept either an eCylinder or mechanical t-handle cylinder. The mechanical cylinders provide the benefit of patented key control and pick resistance. The eCylinder adds sophisticated audit and control features transforming the G8R into a portable access control system for extreme environments.



## Patented Key Control

Protects against unauthorized duplication of your keys.



## Protection From Physical Attack

Medeco<sup>3</sup> padlock cylinders are UL 437 listed and stand up to drilling, picking and other forms of physical attack. Available in either a hardened steel shackle to withstand severe physical attack or a stainless steel shackle for maximum corrosion resistance.



## Weather Resistant Construction

Uses a weather seal cap, attached by a cable, to provide protection from water and road grime.



## Available in eCylinder

Medeco G8R Padlocks are also available with Medeco eCylinders for Loss & Liability control.



## Special Angle Cut Keys

Requires a special key cutting machine and access to Medeco specific blanks, available in a variety of restrictions to support every need.



## Picking and Bumping Protection

Medeco<sup>3</sup> cylinders use a sidebar that prevent the key from rotating until it is elevated, rotated and aligned in the correct position. This feature protects against bumping and picking attacks.

## Technical Information:

- 300 series, cast stainless steel body.
- Padlock is sold less cylinder. Compatible with Medeco® mechanical and NEXGEN electronic t-handle cylinders.
- Padlocks are shipped with a weather seal cap attached by a steel cable. A finish plate is included for applications that do not require the weather seal cap.
- Sealed construction protects cylinders from water and road grime.
- Stainless steel body resists attack and corrosion.
- Shackles can be specified in stainless or hardened steel to fit your application.

## Applications:

- The G8R Series was designed for locking installations requiring weather resistance and strong physical security. Applications include: cargo containers, trailer doors, gates, vending machines.

## Warranty:

Warranted for two (2) years against manufacturer's defects. See the Medeco® limited warranty for full details

## Available Key Technologies:

### Mechanical:

- Medeco<sup>3</sup>

### eCylinder:

- Medeco XT
- Classic CLIQ
- Medeco Nexgen

## G8R Series Padlock

Description	Part Number	Price
G8R Weather-tight Padlock, 5/16" Stainless Steel Shackle, less pop-out cylinder	52110040	
G8R Weather-tight Padlock, 5/16" Hardened Steel Shackle, less pop-out cylinder	52111040	
G8R Weather-tight Padlock, 7/16" Stainless Steel Shackle, less pop-out cylinder	52120040	
G8R Weather-tight Padlock, 7/16" Hardened Steel Shackle, less pop-out cylinder	52121040	
G8R cap and seal kit	94-0213	

G8R padlocks are sold less cylinder and use a cam lock style key with pop-out plug.

Keys are charged separately for this style cylinder.