

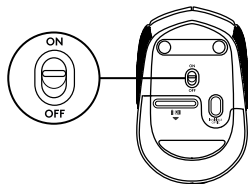
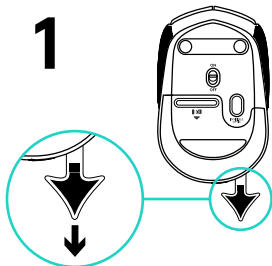


M170/M171 Reliable wireless connectivity

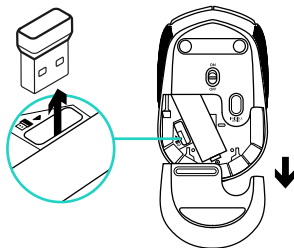


Setup Guide

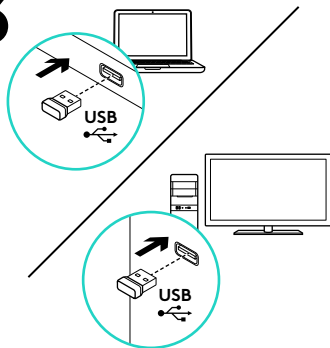
1



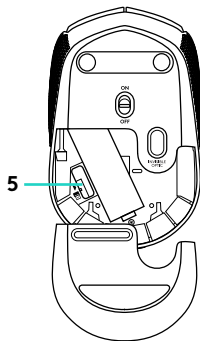
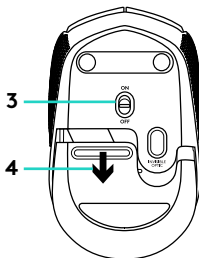
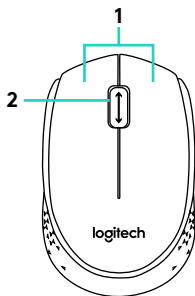
2



3



Features

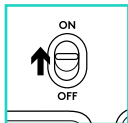


- 1. Left and right mouse buttons
- 2. Scroll wheel
Press the wheel down for middle button (function can vary by software application)

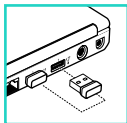
- 3. On/Off slider switch
- 4. Battery door release
- 5. USB Nano-receiver storage

Help with setup: Mouse is not working

1



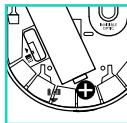
2



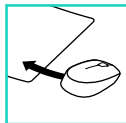
3



4



5



1. Is the mouse powered on?
2. Is the Nano receiver securely plugged into a USB port? Try changing USB ports.
3. If the Nano receiver is plugged into a USB hub, try plugging it directly into a USB port on your computer.
4. Check the orientation of the battery inside the mouse.
5. Try a different surface. Remove metallic objects between the mouse and the Nano receiver.
6. For Windows® operating systems, reconnect the mouse with the Nano receiver by launching the Connect utility from www.logitech.com/connect_utility.