

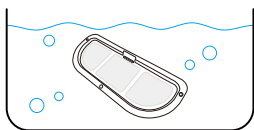
# How To Use

## Step 1

**Soak the filter in a clean bowl for 5 minutes.**

Notes:

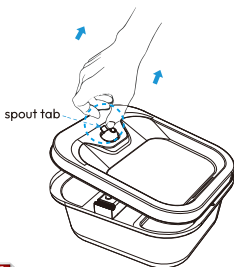
- The filter must be fully soaked before the fountain is turned on; otherwise, water may not flow through the filter smoothly and cause spillage.
- Do not soak the filter in the water tank of the fountain in case of any surface dust.



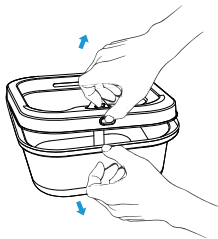
## Step 2

### Lift the water tray

Open the water tray by lifting the spout tab or putting one hand on the edge of the water tank, lifting the water tray by putting one finger of the other hand in the slot.



or

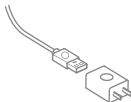
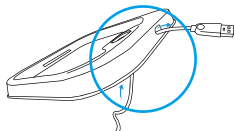
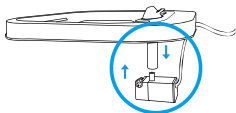


# How To Use

## Step 3

**Connect the pump to the silicone pipe on the water tray.**

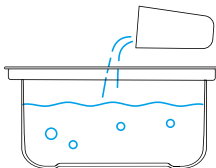
Put the cord in the slot.



## Step 4

**Add water to the tank.**

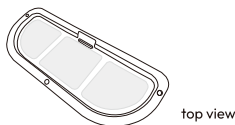
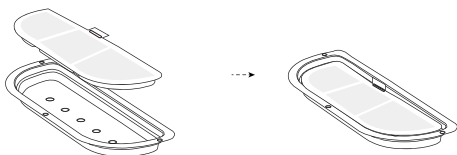
Note: Keep the water level between the min and max level. The pump will fail if it runs dry.



# How To Use

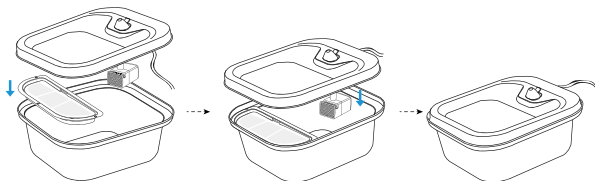
## Step 5

**Install the filter tray and place the filter on the filter tray.**



## Step 6

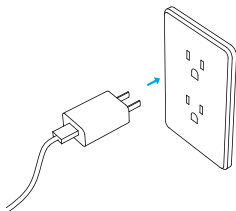
**Install the water tray.**



# How To Use

## Step 7

Connect the power adapter.



## Still don't know how to set

Visit the YouTube channel "WUIPET" or Scan QR codes below for the pet water fountain operation video.



 Scan and Play Guide Video

# MAINTENANCE

For optimal performance, follow the instructions below to clean and maintain your WUIPET Water Fountain regularly. Cleaning or replacement frequency will depend on your usage habits.

Water Fountain Part	Recommended Cleaning Frequency	Recommended replacement Frequency
Carbon filter		every 2 weeks
Foam filter		every 2 weeks
Water pump	every 1 - 2 weeks	Replace after it is damaged
Water Tank	every 1 - 2 weeks	

Note: Replace filters more frequently when using the fountain for multiple pets. And always rinse the filters before use. NEVER wash the filter with soap.