

Sound Bar

Startup Guide

入門指南

HT-A5000

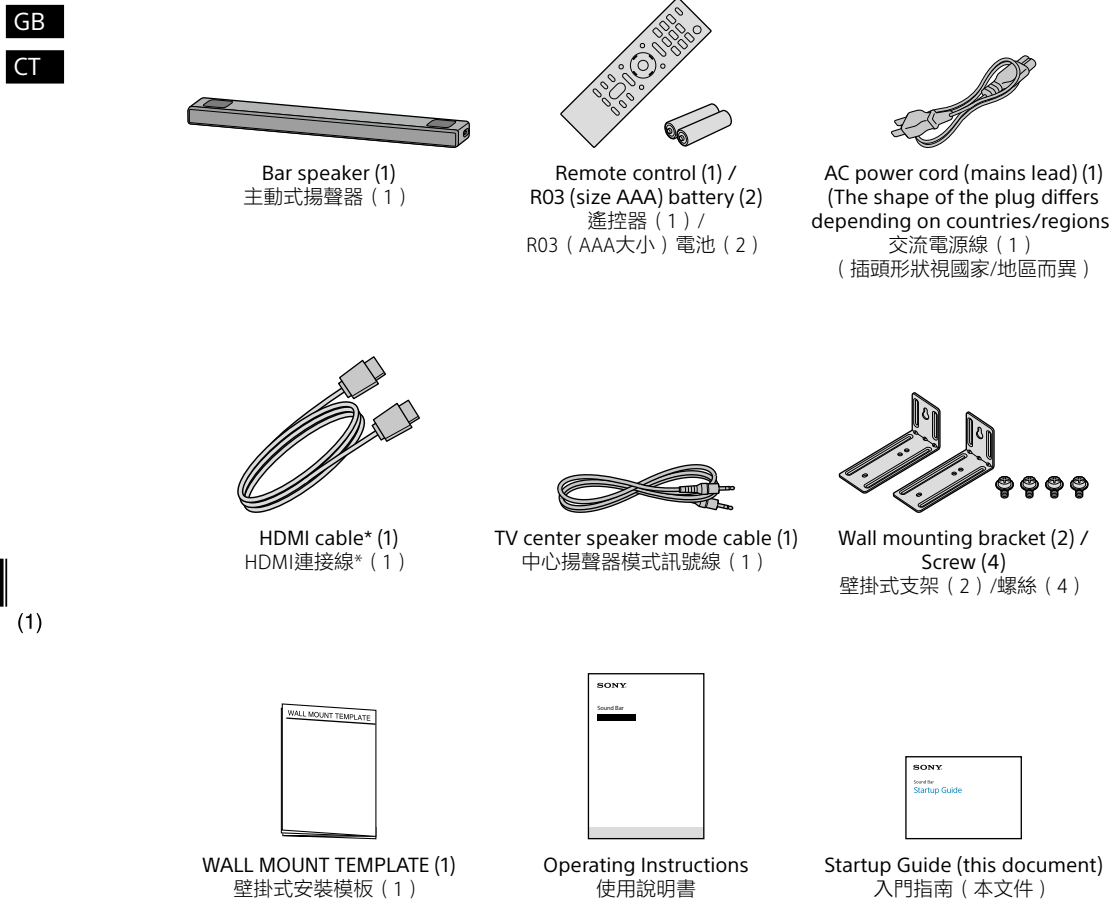
5-029-474-63(1)

© 2021 Sony Corporation Printed in China



What's in the box

盒中內容



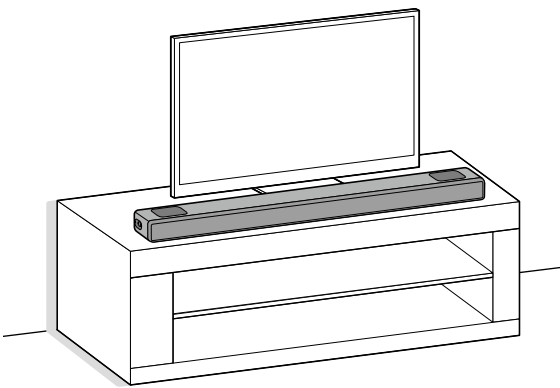
* Supports the transmission of 4K/8K content.
* 支援4K/8K內容的傳輸。

1

Choose an installation method

選擇安裝方式

Installing on a shelf/stand
在架子/底座上安裝



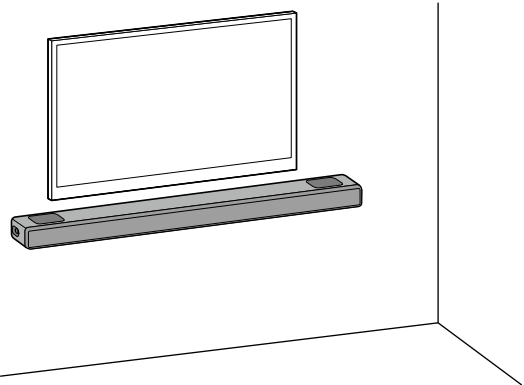
or
或

Mounting on a wall

For details, refer to the Operating Instructions (separate document).

在牆壁上安裝

如需詳細資訊，請參閱使用說明書（另外的文件）。



Note

- Before connecting the speaker system, disconnect the AC power cords (mains leads) of the TV and AV devices from the AC outlets (mains). Reconnect them in step 4.
- Do not place metal objects near the speaker system. Wireless functions may become unstable.
- Do not cover the top of the speaker. It may interrupt the sound output from the top of the speaker.
- There are ventilation holes at the rear of the speaker. Place the speaker away from a TV or a wall at a distance of 10 mm (13/32 in) or more.

註

- 連接揚聲器系統之前，從交流電插座拔出電視機與AV裝置的交流電源線。在步驟4中重新連接。
- 請勿將金屬物體放在揚聲器系統附近。無線功能可能不穩定。
- 請勿覆蓋揚聲器的頂部。否則可能會中斷揚聲器頂部聲音輸出。
- 揚聲器背後有通風孔。請將揚聲器與電視機或牆壁保持10 mm或更大距離。

To set up with the optional subwoofer and/or rear speakers

The confirm screen for the speaker connection appears on the TV screen in step 5. Connect the optional speakers to the speaker system by following the screen instructions.

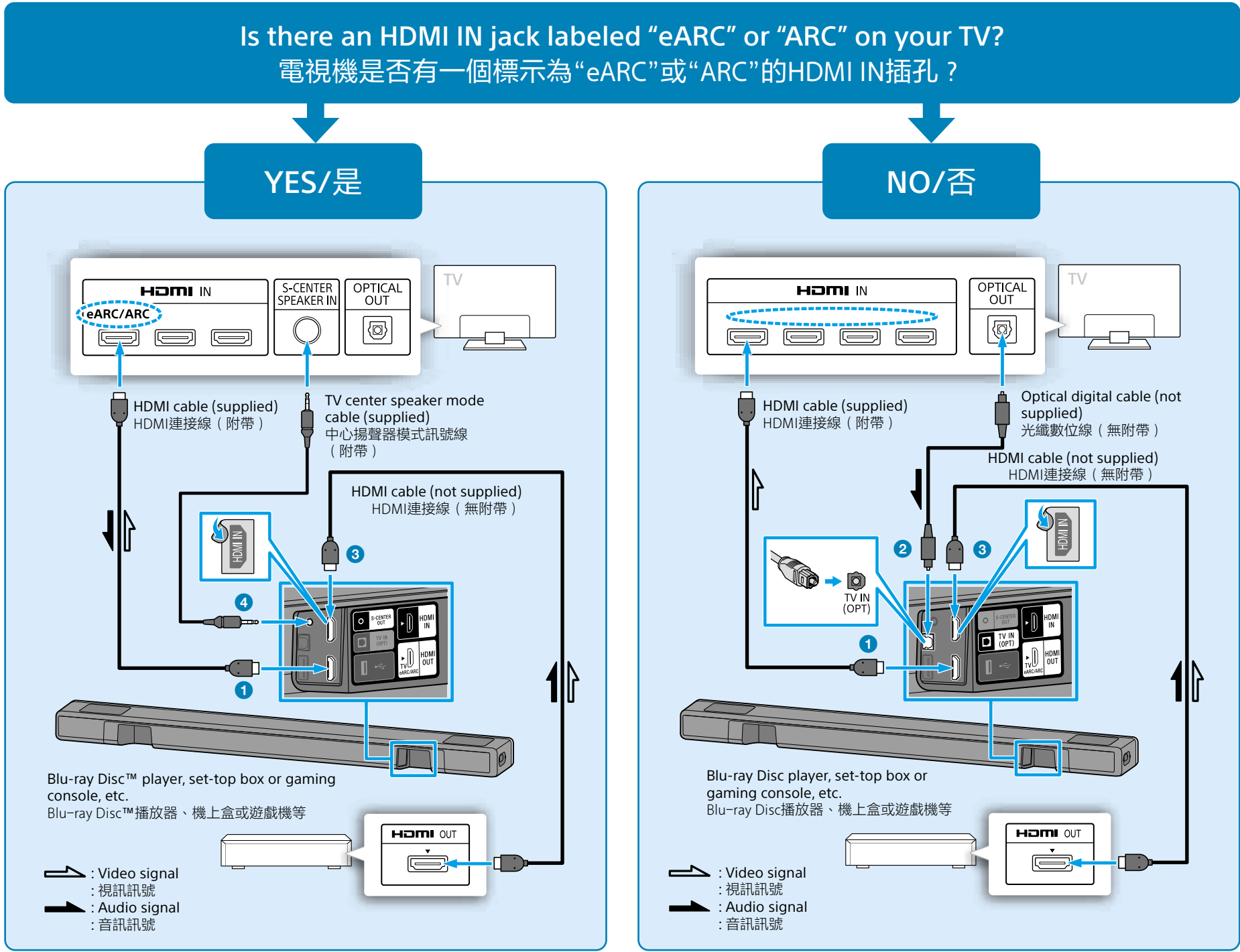
與可選重低音揚聲器和/或後置揚聲器配合使用時的設置

揚聲器連接的確認螢幕出現在步驟5中的電視機螢幕上。按照螢幕指示將可選揚聲器連接至揚聲器系統。

2

Connect a TV and another device

連接電視機與其他裝置



- Connect the HDMI cable (supplied) to the HDMI OUT jack on the speaker system and the HDMI IN jack on your TV.
- When your TV does not have an HDMI IN jack labeled “eARC” or “ARC,” use an optical digital cable (not supplied) to connect an optical out jack on your TV and the TV IN (OPT) jack on the speaker system. There will be no sound output from the TV if the TV and the speaker system are connected only using the HDMI cable.
- Connect an HDMI cable (not supplied) to the HDMI OUT jack on another device (a Blu-ray Disc player, set-top box, gaming console, etc.) and the HDMI IN jack on the speaker system. You can listen to high quality sound by playing the audio formats such as Dolby Atmos-Dolby TrueHD or DTS:X. If your TV is compatible with the eARC function, you can listen to high quality sound by connecting another device to the HDMI IN jack on the TV and enabling the eARC function of the TV.
- If your TV has the S-CENTER SPEAKER IN jack, connect the S-CENTER SPEAKER IN jack on your TV to the S-CENTER OUT jack on the speaker system using the TV center speaker mode cable (supplied). This enables sound to precisely match what's on the screen for a truly immersive experience.

Note

- Make sure that the connectors are firmly inserted.
- Check the shape of the optical digital cable's connectors and the jacks on the TV and the speaker system. Insert the connectors into the jacks in the right directions. If you forcibly insert the connectors in the wrong directions, the connectors and the jacks may be damaged.
- If you select “YES,” enable the Control for HDMI function on the TV. Otherwise, there will be no TV sound output from the speaker system.

Tip

- Select the appropriate HDMI cable and [HDMI Signal Format] setting according to the video formats output from the device connected to the speaker system. For details, refer to the Help Guide.
- When you connect the speaker system to a device which supports the 8K video format, refer to “Connecting an AV Device Compatible with the 8K Video Format” in the Operating Instructions (separate document).

- 將HDMI連接線（附帶）連接至揚聲器系統上的HDMI OUT插孔和電視機上的HDMI IN插孔。
- 如果您的電視機沒有標示為“eARC”或“ARC”的HDMI IN插孔，請使用光纖數位線（無附帶）連接電視機的光纖輸出插孔與揚聲器系統的TV IN (OPT)插孔。如果僅使用HDMI連接線連接電視機與揚聲器系統，電視機就沒有聲音輸出。
- 將HDMI連接線（無附帶）連接到其他裝置（Blu-ray Disc播放器、機上盒或遊戲機等）上的HDMI OUT插孔和揚聲器系統上的HDMI IN插孔。您可以透過播放Dolby Atmos-Dolby TrueHD或DTS:X等音訊格式來聆聽高品質聲音。如果您的電視機與eARC功能相容，可以將其他裝置連接到電視機上的HDMI IN插孔並啟用電視機的eARC功能來聆聽高品質聲音。
- 如果您的電視機有S-CENTER SPEAKER IN插孔，則使用中心揚聲器模式訊號線（附帶），將電視機上的S-CENTER SPEAKER IN插孔連接至揚聲器系統上的S-CENTER OUT插孔。這使音效能夠精確比對螢幕上的內容，從而產生真正的沉浸式體驗。

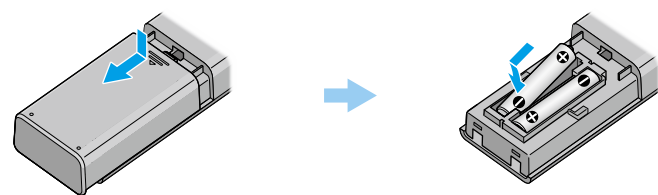
註

- 確定接頭牢固地插入。
- 請檢查光纖數位線連接器與電視機及揚聲器系統插孔的形狀。以正確的方向將連接器插入到插孔內。如果您以錯誤方向強力插入連接器，連接器與插孔可能會損壞。
- 如果選擇“是”，則在電視機上啟用HDMI控制功能。否則揚聲器系統不會輸出電視機聲音。

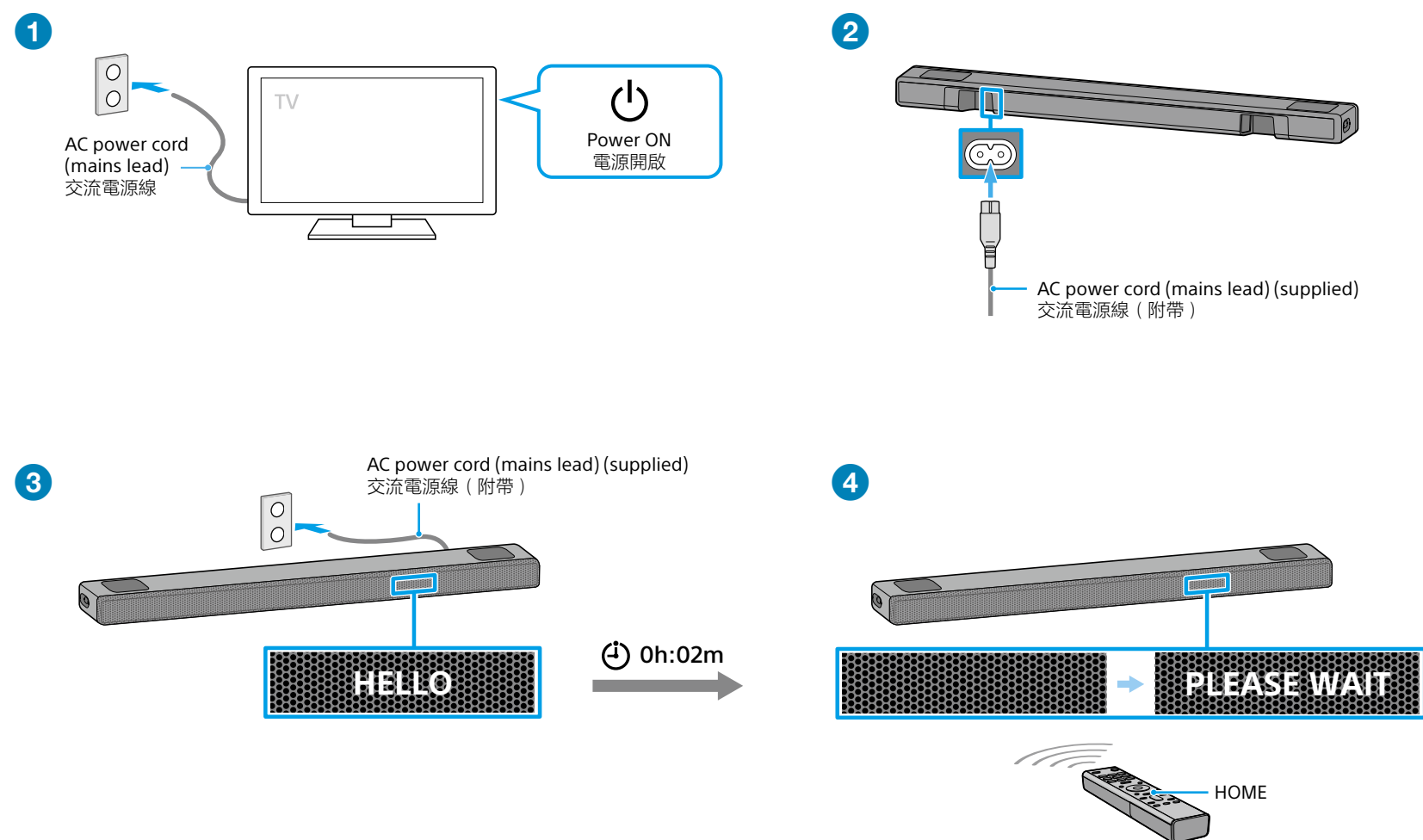
提示

- 根據從連接到揚聲器系統的裝置輸出的視訊格式，選擇適當的HDMI連接線和[HDMI訊號格式]設定。如需詳細資訊，請參閱說明指南。
- 當您將揚聲器系統連接到支援8K視訊格式的裝置時，請參閱使用說明書（另外的文件）中的“連接與8K視訊格式相容的AV裝置”。

3 Set up the remote control 設定遙控器

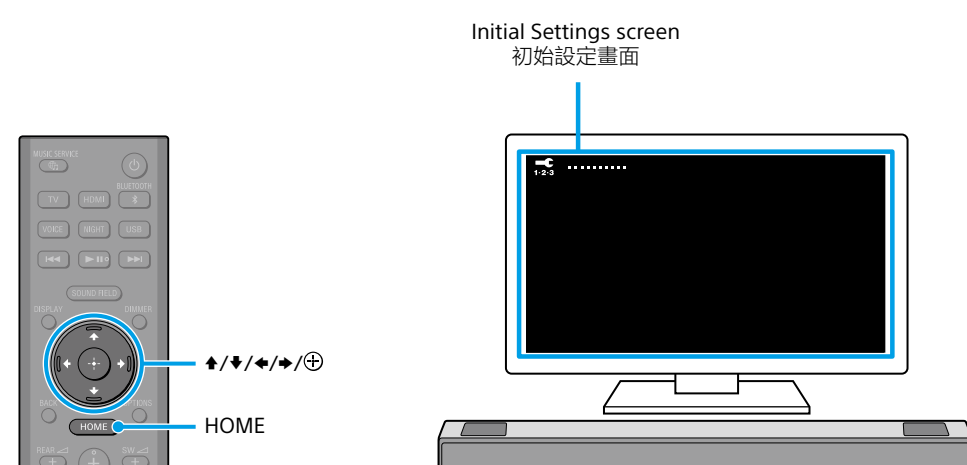


4 Turn on the TV and the speaker system 開啟電視機和揚聲器系統的電源



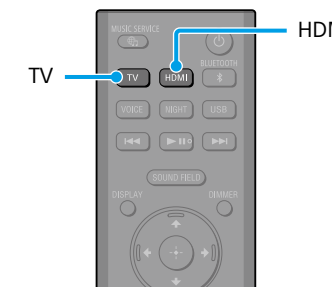
- 1 Connect the TV's AC power cord (mains lead) to the AC outlet (mains).
- 2 Connect the AC power cord (mains lead) to the AC inlet on the speaker system.
- 3 Connect the AC power cord (mains lead) to the AC outlet (mains).
The remote control of the speaker system does not work until [HELLO] in the front panel display on the speaker system disappears.
- 4 Press HOME on the remote control of the speaker system after [HELLO] in the front panel display disappears.
Wait until [PLEASE WAIT] in the front panel display disappears and next indication appears in the front panel display.

5 Perform Initial Settings 執行初始設定



- 1 Follow the instructions on the screen displayed on the TV to perform initial settings with and .
If the initial setting screen is not displayed, use the TV remote control to switch the input on the TV to the HDMI input that is connected to the speaker system, then press HOME on the remote control of the speaker system.
- 2 If you use the optional subwoofer/rear speakers, connect them by following the instructions on the [Checking Wireless Speaker Connection] screen.
- 3 Once [Setup is complete.] appears, select [Learn more].

6 Listen to sound 聆聽聲音



To listen to the audio of the TV

- 1 Select the desired input to the TV using the TV remote control.
The screen switches to the selected input screen and the TV audio is output from the speaker system.
If [TV] does not appear in the front panel display on the speaker system, press TV on the remote control of the speaker system to select the TV input. [TV] appears in the front panel display on the speaker system.

To listen to the audio of a device that is connected to the HDMI IN jack on the speaker system

- 1 Turn on the connected device. Then use the TV's remote control to switch the TV's input to the HDMI IN jack to which the speaker system is connected.
- 2 Press HDMI on the remote control of the speaker system to switch to the HDMI input.
[HDMI] appears in the front panel display on the speaker system and the audio of the connected device is output from the speaker system.

Note
Depending on the order in which you turn on the TV and speaker system, the speaker system may be muted and [MUTING] may appear on the front panel display on the speaker system. If this happens, turn on the TV first, then the speaker system.

聆聽電視機的聲音

- 1 使用電視機遙控器選擇所要的電視機輸入。
畫面切換為所選輸入畫面，而且揚聲器系統輸出電視機的聲音。
如果揚聲器系統的前顯示面板上沒有出現[TV]，請按下揚聲器系統遙控器上的TV以選擇電視機輸入。揚聲器系統的前顯示面板上出現[TV]。

聆聽連接到揚聲器系統HDMI IN插孔的裝置之音訊

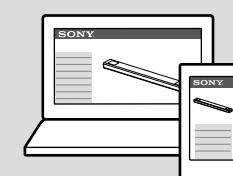
- 1 開啟連接的裝置之電源。然後使用電視機遙控器將電視機輸入切換為揚聲器系統連接的HDMI IN插孔。
- 2 按下揚聲器系統遙控器的HDMI，以切換到HDMI輸入。
揚聲器系統的前顯示面板上出現[HDMI]，連接裝置的音訊會從揚聲器系統輸出。

注
依據您開啟電視機與揚聲器系統的順序，揚聲器系統可能會靜音，而且揚聲器系統的前顯示面板上可能會出現[MUTING]。如果發生這種狀況，請先開啟電視機，然後開啟揚聲器系統。

How to use the speaker system / Troubleshooting 如何使用揚聲器系統/故障排除



Operating Instructions (booklet)
Describes basic usage such as installation/connection and playback of connected devices.



Help Guide (Web instruction manual)
Describes all the usage such as the network function and the detailed setting method, including the contents of the Operating Instructions.



For troubleshooting when the speaker system does not operate correctly, see "Troubleshooting" in the Operating Instructions or Help Guide.

使用說明書（小冊子）
描述基本使用，例如安裝/連接和播放連接裝置。

說明指南（網頁版使用說明書）
描述所有使用，例如網路功能和詳細設定方法，包括使用說明書的內容。

For customers in Americas
對於美洲客戶
https://rd1.sony.net/help/ht/a5000/h_uc/



For customers in other countries/
regions
對於其他國家/地區客戶
https://rd1.sony.net/help/ht/a5000/h_zz/

