



Template v5.1.0 Update Instructions

Version: 20250811

Contents

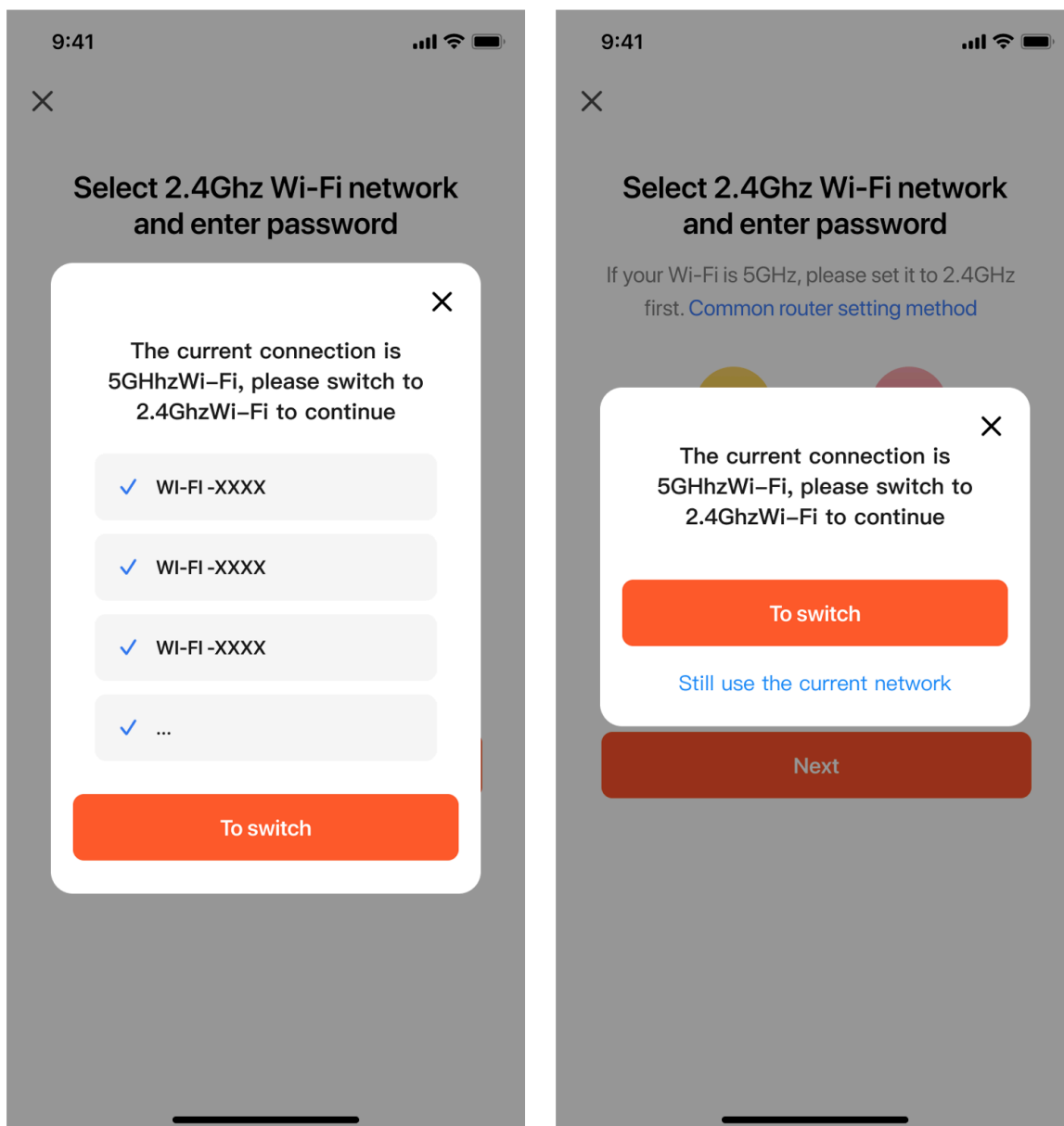
1. App update	2
1.1. Optimized pairing over dual-band Wi-Fi with 2.4 GHz and 5 GHz ..	2
1.2. Optimized quick toggles of lighting devices	3
1.3. Supported integration with Matter	4
2. Feedback and help	6

This topic describes the updates of the OEM app for SmartLife v5.1.0. This app version was released on May 31, 2023. You can integrate the updates into your app.

1. App update

1.1. Optimized pairing over dual-band Wi-Fi with 2.4 GHz and 5 GHz

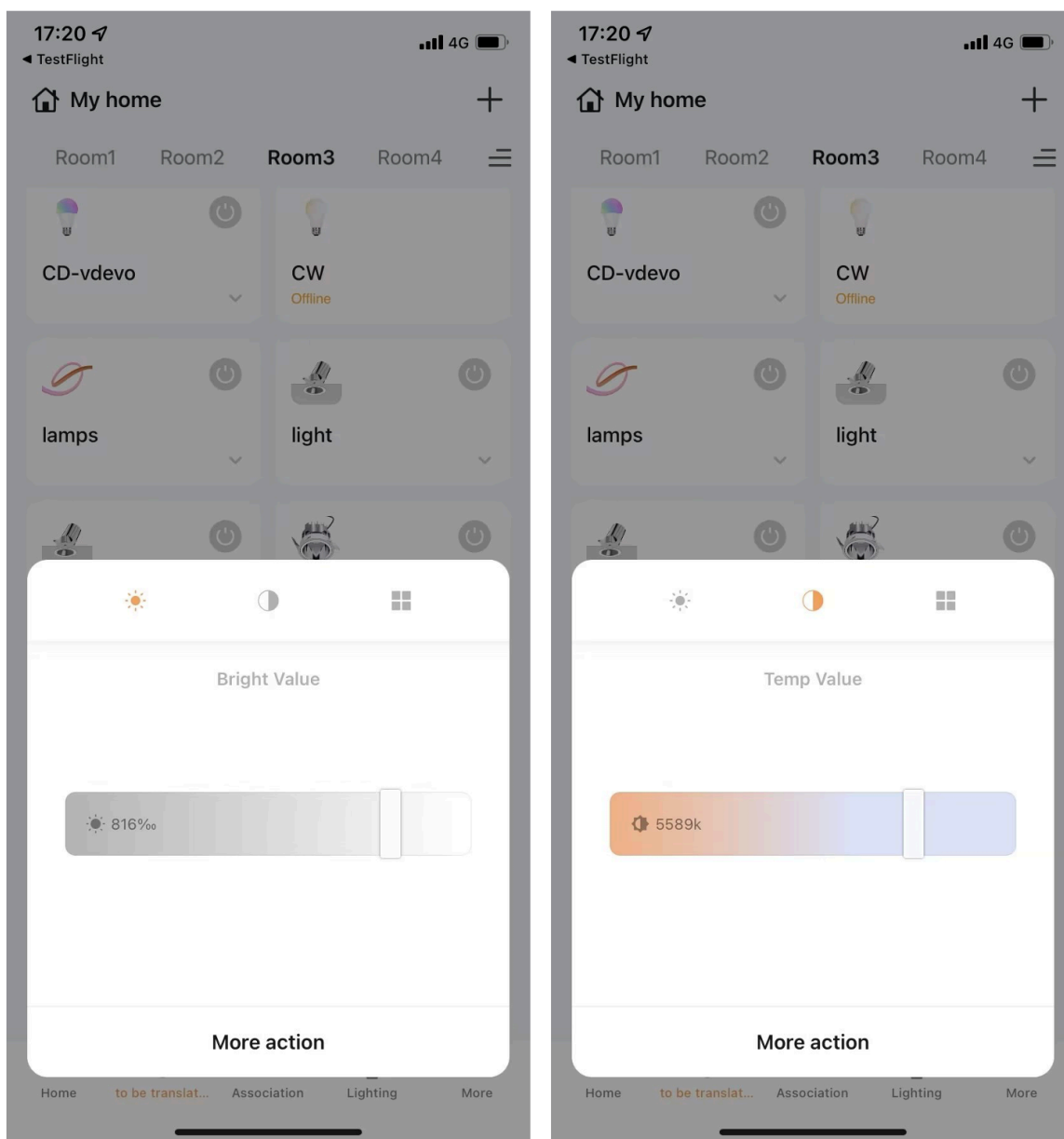
- Added a prompt for detecting an incorrect hotspot during an access point (AP) or hotspot pairing task. If users are found to connect to an incorrect Wi-Fi hotspot, this prompt will appear. This feature can be enabled or disabled separately.
- Added a prompt for detecting a 5 GHz Wi-Fi hotspot during an AP or hotspot pairing task. If users are found to probably connect to a 5 GHz Wi-Fi hotspot, this prompt will appear and guide users to switch to a 2.4 GHz Wi-Fi hotspot. This feature can be enabled or disabled separately.
- (For Android only) Added a prompt for switching from a 5 GHz Wi-Fi network to a 2.4 GHz Wi-Fi network during device pairing. If users are found to connect to a 5 GHz Wi-Fi network, this prompt will appear and guide users to switch to an available 2.4 GHz Wi-Fi network. This feature can be enabled or disabled separately.



1.2. Optimized quick toggles of lighting devices

Optimized quick toggles of lighting devices and supported advanced lighting features.

- Supported fine adjustment of brightness to a permillage value.
- Optimized the styles of color temperature and brightness adjustment.



1.3. Supported integration with Matter

You can subscribe to integration with Matter for your OEM app on the [Tuya Developer Platform](#) . A 30-day free trial is provided in this subscription.

1. Log in to the [Tuya Developer Platform](#) .
2. Go to **App > OEM App > App Creation** and find the OEM app to be configured.
3. Make sure the template v5.1.0 or later is used for the app.
4. Choose **Set Functions > Advanced Functions > Basic Features**, and subscribe to **Integrate with Matter**.

The following requirements must be met before you can subscribe to this feature:

- The **OEM App Basic** or **OEM App Advanced** is purchased.
- Your OEM app is not a legacy paid version.

The screenshot displays the Tuya OEM App configuration interface. On the left is a sidebar menu with categories: Product, App, Cloud, Data, Operation, Purchase, and VAS. The 'App' category is selected, showing options like App Creation, Required Setting, Optional Setting, Common Tools, Smart settings, App SDK, SDK Development, and Optional Setting. The main panel shows the 'Set Functions' step (Step 2) of a three-step process (1. Customize UI, 2. Set Functions, 3. Build App). Below this are tabs for Extended Functions, Third-Party Voice Assistants, and Advanced Functions. The 'Advanced Functions' tab is active, showing a list of features. The 'Integrate with Matter' feature is highlighted with a red box. It is currently 'Not subscribed' and has a validity period of 2021-08-15. Other features include 'Quick Login on Mobile Phone' (Not subscribed), 'Custom Domain Name' (Available only after subscription), and 'Basic Features' (Valid To 2021-08-15).

5. Configure matter certificate profiles for your iOS app. For more information, see [Configure Matter Certificate Profiles](#).

2. Feedback and help

- If you have any questions or suggestions, contact us at app_qa@tuya.com .
- For more information about the OEM app update process, see [Update App Version on Tuya Developer Platform](#) .