

## CABINET SIZE

One 65" H x 20" W x 16" D - Linen Cabinet

One 48" W x 21.5" D x 34.5" H - Hepburn Cabinet



## FEATURES

- Solid wood frame
- Dovetail joints structure
- Soft closing doors & drawer
- Adjustable shelf
- Sherwin-Williams Paint Coat
- Anti-tip kit included

## HARDWARE FINISHES\*



Brushed Nickel    Satin Brass    Matte Black    Polished Chrome

\*Hardware comes preinstalled with the illustrated option.  
Other finishes are available on our online store if you prefer a different one.

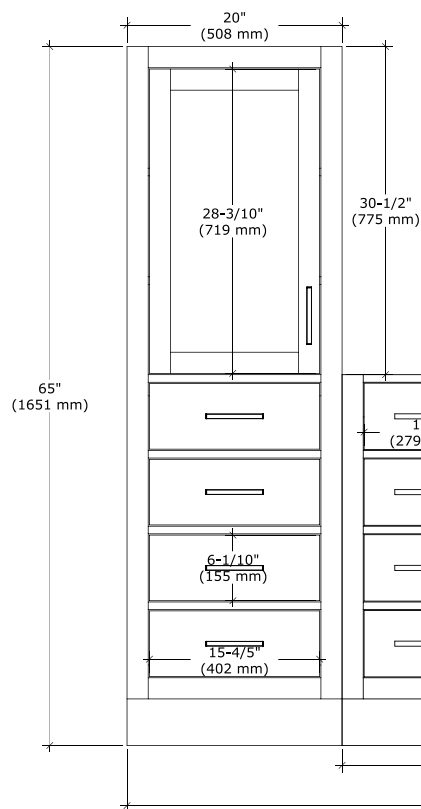
## AVAILABLE COLORS



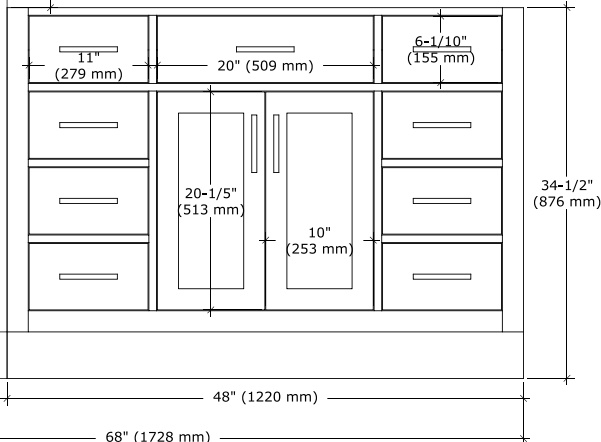
White    Grey    Midnight Blue    Oak    Black

## FRONT VIEW

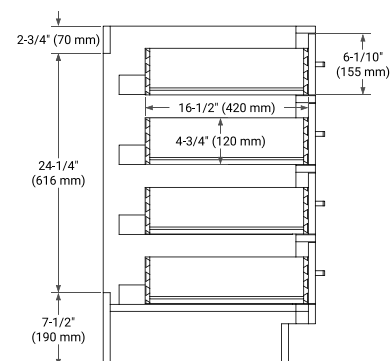
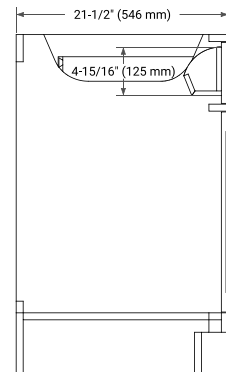
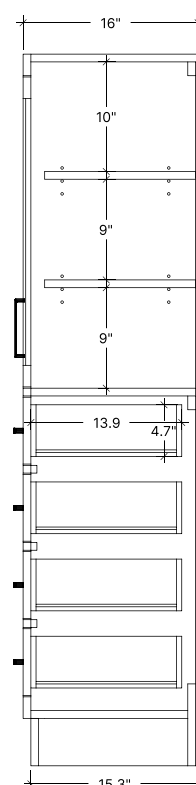
Linen Cabinet



Hepburn Cabinet

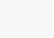


## SIDE VIEW



# ARIEL

49" W x 22" D x 1.5" H



White Quartz

- Solid countertop with mitered edges & seams
- Undermount white rectangular sink
- Pre-drilled for 8" widespread faucet

- Countertop
- Matching Backsplash
- Rectangle Sink

Technical drawing of a rectangular plate with the following dimensions and specifications:

- Overall Dimensions:**
  - Width: 49" (1245 mm)
  - Height: 22" (559 mm)
- Internal Features:**
  - Holes:** Three circular holes are located along the top edge.
    - Left hole diameter: 2-1/2" (63.5 mm)
    - Middle hole diameter: 8" (204 mm)
    - Right hole diameter: 1-3/8" (35 mm)
  - Internal Rectangle:** A rounded rectangle is centered within the plate.
    - Width: 17-1/8" (435 mm)
    - Height: 12" (305 mm)
  - Offsets:**
    - Distance from the left edge of the plate to the left side of the internal rectangle: 16" (405 mm)
    - Distance from the bottom edge of the plate to the bottom side of the internal rectangle: 5" (127 mm)

Technical drawing of a mechanical part showing dimensions:

- Top flange thickness:  $\frac{3}{4}"$  (18 mm)
- Total height:  $1\frac{1}{2}"$  (40 mm)
- Fillet radius: R2
- Bottom flange thickness:  $\frac{3}{4}"$  (18 mm)

Isometric view of the three-dimensional counterpart of the 2D drawing. The dimensions are: 49" (1245 mm) for the length, 22" (559 mm) for the width, and 4" (102 mm) for the height of the main body. A central rectangular feature has a height of 1-1/2" (40 mm). The top surface of the main body has three circular holes.