

3 Way Smart Dimmer Switch
SW17



Since the device only supports 2.4G Wi-Fi connection, please ensure that the mobile phone and the device are connected to 2.4G Wi-Fi simultaneously.

Accessories Supplied Individually

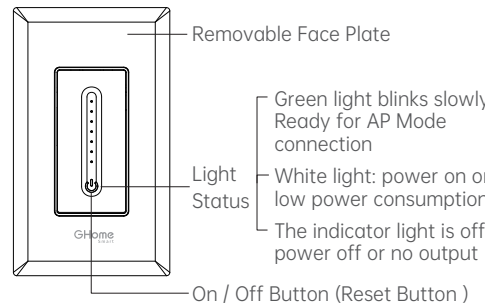
3 Way Dimmer SW17 ----- x 1
Screws ----- x 7
Wiring terminals ----- x 2
User manual ----- x 1
Binding Voice Assistants Guide ----- x 1

-2-

Parameters

Model: SW17 FCC ID:2APUZ-SW2
Input: 120V~ 50/60Hz
Max output: 150W LED, 150W CFL, 450W INC
Wi-Fi: 802.11/b/g/n, 2.4GHz (only)
Operating Temp: -10°C~40°C

Product Overview



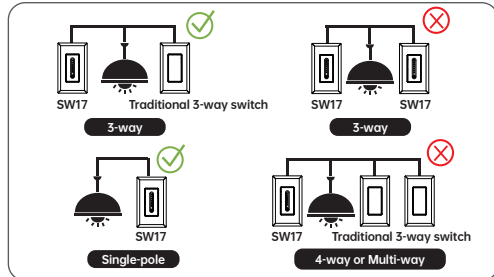
-3-

Before You Install

Installation Tips!

WARNING: SHOCK HAZARD

Incorrect installation may be dangerous or illegal. Multiple circuit breakers may need to be de-energized for safe installation. If you are not familiar with electrical work, please call a professional electrician.



Before You Install

Line Wire : A line wire is a wire carrying an electric current. If you keep your tester here, it will show indication when power is there.
Load Wire: The load wire connects your light switch to your light fixture. It is usually attached to a brass terminal on the previous switch. It is sometimes black or red.

-4-

Neutral Wire: A neutral wire which normally in white color allows the switch to be powered while simultaneously allowing the lighting circuit connected to your lights to be power off.

Ground Wire: Ground wire is a bare copper wire that provides a conducting path to the earth.

If the wires in your switch wall box are different from the ones listed below, we recommend consulting a qualified electrician.

Identify Wires By Color

Tip #1: An easy way to identify the wires in your wall box is by looking at the color.

Neutral	
White or Grey	
Ground	Green, Copper or Green with Yellow Strip
Line	
Black	
Load	
Red or Black	
Traveler	
White or Black	

-5-

If Line and Load Are Both Black

Tip #2: The Load wire is usually coming from the top of the box. The Line wire is usually coming from the bottom of the box.

Tip #3: Before removing the switch, test each wire with a voltage tester.

CAUTION: Risk of electric shock. Do NOT touch any wires during this process.

- After removing the face plate, turn the breaker back on.
- Very carefully, press the voltage pen against each wire.
- The pen will glow red when the wire is hot.
- The wire that causes the pen to glow red is the hot wire; also known as the Line wire.
- The wire that does not cause the pen to glow red is the Load wire.

CAUTION: Risk of electric shock. Before continuing with the rest of the installation process, make sure to turn the power breaker off.

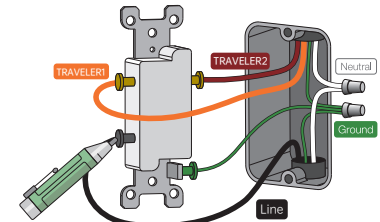
-6-

Identify whether the switch is at the input end ?

Turn on the power at the circuit breaker and turn off the switch. (Attention: Do not touch the switch circuit or screws with your hands)
Use a Voltage tester to check the black screw on the old switch.

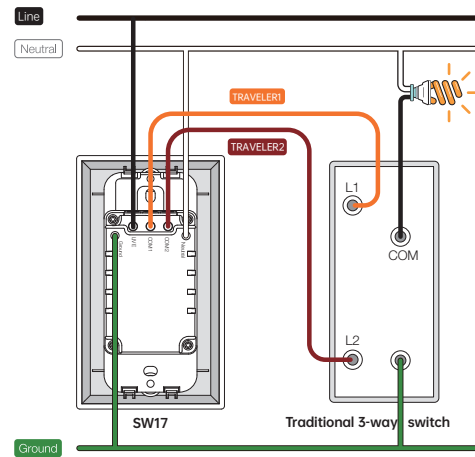
If the detection result is not the line wire, then this position is the output end, the dimmer switch is not suitable for this position. Please turn off the power, reinstall the old switch back onto the wall, and then select the switch on the other end for replacement.

Note: If one of the two traditional three-way switches connected to the device malfunctions, you need to move the traditional three-way switch originally connected to the line wire to the position where the device is connected, and replace the traditional three-way switch connected to the line wire with a smart three-way switch.



-7-

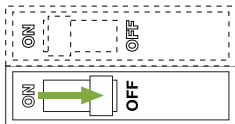
For 3-Way connection: SW17 is only used in pairs with the traditional 3-Way switch



-8-

3-Way Smart Dimmer Switch

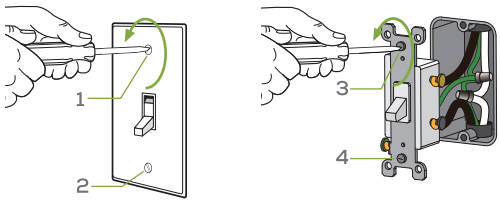
Step 1 Shut OFF the power at the circuit breaker for the switch you are replacing.



You may need to shut OFF more than one circuit breaker/switch to make sure the switch you're working on is powered OFF.

IMPORTANT: USE A NON-CONTACT VOLTAGE DETECTOR OR FLIP YOUR LIGHT SWITCH A FEW TIMES TO MAKE SURE THAT THE POWER IS OFF.

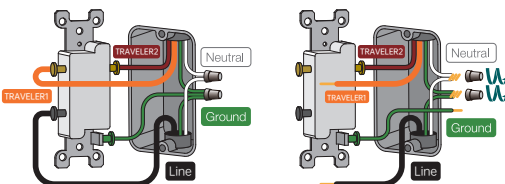
Step 2 Be sure to find the old switch that the line wire was connected to. Unscrew the old switch with a screwdriver and pull it out of the wall.



Remove the wallplate from switch.

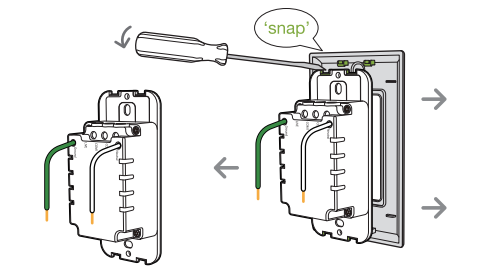
Remove the switch and pull it away from the wall.

-9-



Disconnect all wires from the switch. **Please note:** replace the traditional 3-way switch which connected to the Line wire.

Step 3 Install the 3-way smart dimmer switch SW17. Insert your wires to the terminal, then tighten the screw. In case you need jumper wire, the switch comes with extra jumper wires and caps.

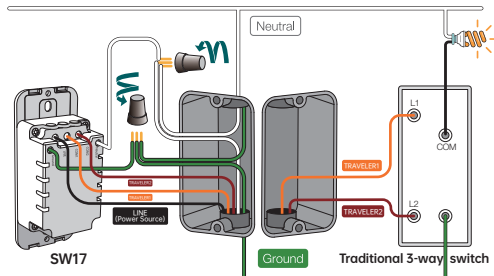


Use a flat-head screwdriver to pry open the panel.

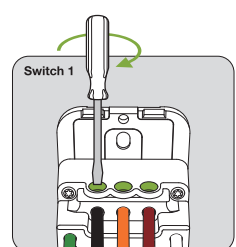
-10-

3-Way Smart Switch:

SW17 only used in pairs with the traditional 3-way switch, and the Line wire must be connected to the port of smart switch SW17.



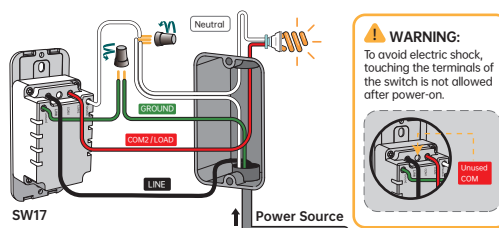
Tighten the incoming wires:



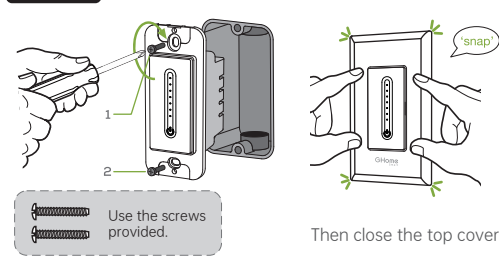
-11-

Or Single-Pole:

SW17 is also compatible with 1-way circuit, use one of the COM1 or COM2 terminal of the switch as the load wire to connect light.



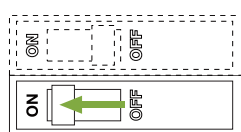
Step 4 Mount the device using the provided screws.



-12-

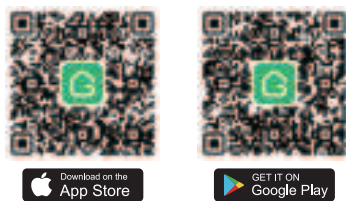
(IF YOU INSTALLED THE DIMMER NEXT TO OTHER DIMMERS OR SWITCHES, YOU'LL NEED TO INSTALL A WALLPLATE WITH THE CORRECT SIZE/NUMBER OF OPENINGS TO ACCOMMODATE ALL THE DEVICES.)

Step 5 Turn power on at circuit breaker.



How to Download the App

Option 1: Search for our app in the APP Store or Google Play.
Option 2: Scan the QR code below to enter the download page.



-13-

How to Pair with the App

1. Open the app and create your account.
2. Turn on the switch and place it near the router when pairing.
3. Hold the ON/OFF button for 5 seconds and release it when the switch starts to blink slowly to enter the network pairing mode.

Connect your phone to the Wi-Fi router, and click the "+" at the top right corner of the homepage to add a device.

You can add a device in two ways.

- 1) Bluetooth Auto-Discovery Mode (Recommended)
The app will suggest you turn on Bluetooth and Wi-Fi on your phone, and then select the device you want to add. Enter your Wi-Fi name and Wi-Fi password (supports 2.4G Wi-Fi only), and it will automatically connect to the network.
- 2) "Slow Flash" Mode (AP)
If Bluetooth networking fails, you can try AP networking mode.

Select "SW17" under "Electrician", enter your Wi-Fi name and Wi-Fi password (supports 2.4G Wi-Fi only), choose "Slow Blink" to ensure the LED indicator blinks slowly, connect your phone to the device hotspot: "SmartLife-XXXX", then return to the app interface, it will automatically connect to the router, completing the configuration.

-14-

After binding the app, you can control the brightness and brightness range of the bulb through the app. When the brightness range is set, the brightness value can only be controlled within the set brightness range.

NOTE: The Brightness Range only needs to increase the minimum value when your bulb is flashing at lowest brightness. Otherwise, please default the Range Value to 1%-100% for normal use.

Reset

Turn on the power, hold the On/Off button (Reset button) for 5 seconds and let it go when the Switch starts to flash slowly, the reset is successful.

When the Switch is in a new network environment, you need to restore the factory settings, and then reconnect to the network.

Warnings and Precautions

- Keep it out of the reach of children and pets.
- Do not use this product in humid environments or outdoors. It's for indoor use only.
- Do not place this product near heating devices, such as microwave ovens, stoves, or radiators.
- Protect the product from extreme temperatures, direct sunlight, strong jolts, high humidity, moisture, flammable gases, vapors and solvents.
- Do not disassemble, modify, or repair your device, and ask help from the authorized professionals for device malfunction.

-15-

- Do not use the device when it is no longer working properly or visibly damaged.
- Do not store the device for extended periods in poor ambient conditions.
- Never use aggressive detergents such as rubbing alcohol or other chemical solutions because these could damage the casing or even impair the functioning of the product.

Note: The image shown in the manual is indicative only. If there is inconsistency between the image and the actual product, the actual product shall govern.

Contact Us

Manufacturer: Shenzhen Cuco Smart Technology Co., Ltd.
Address: Room 201, 301, Building A, No.12 Difu Road, Guxing Community, Xixiang Street, Bao'an District, Shenzhen, 518000, Guangdong, P. R. China
After-sale Tel: 1-844-394-5218
PST 9am - 5pm (Monday-Friday)
Email: service@ghomesmart.com



-16-

4.02.000.1347 V3.0