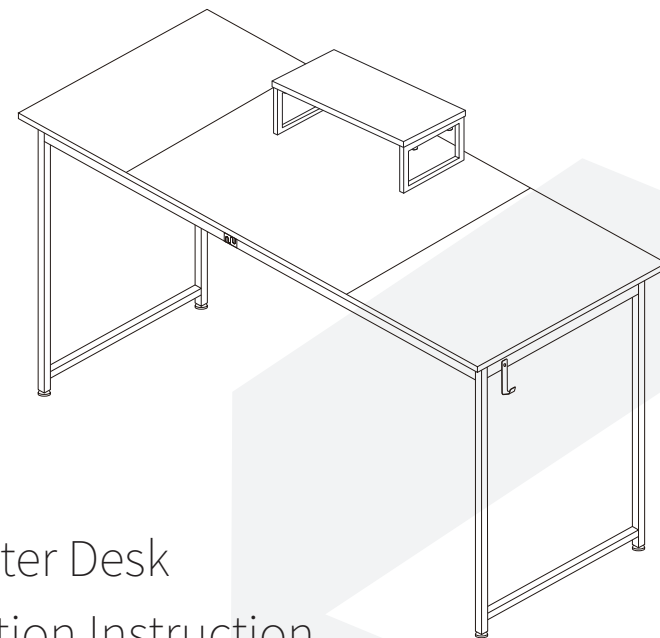




***service@icubicubi.com***

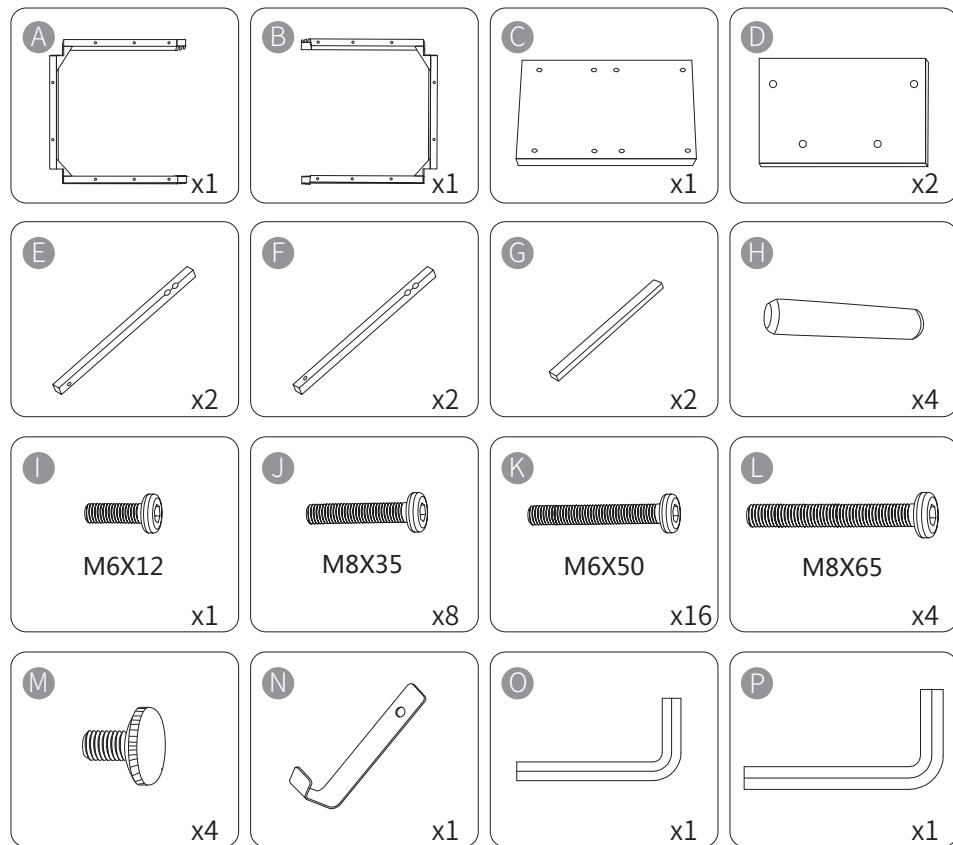
**Thank you for choosing our product.**

Please share your product experience if you are happy with it. Feel free to contact us on Amazon in case of any problem regarding assembling or the product itself.

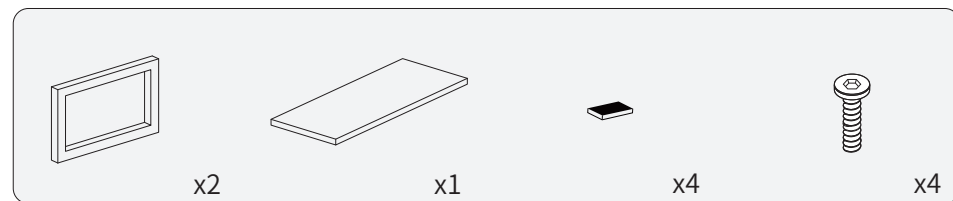


Computer Desk  
Installation Instruction

## Desk Parts List



## Small Table Parts List

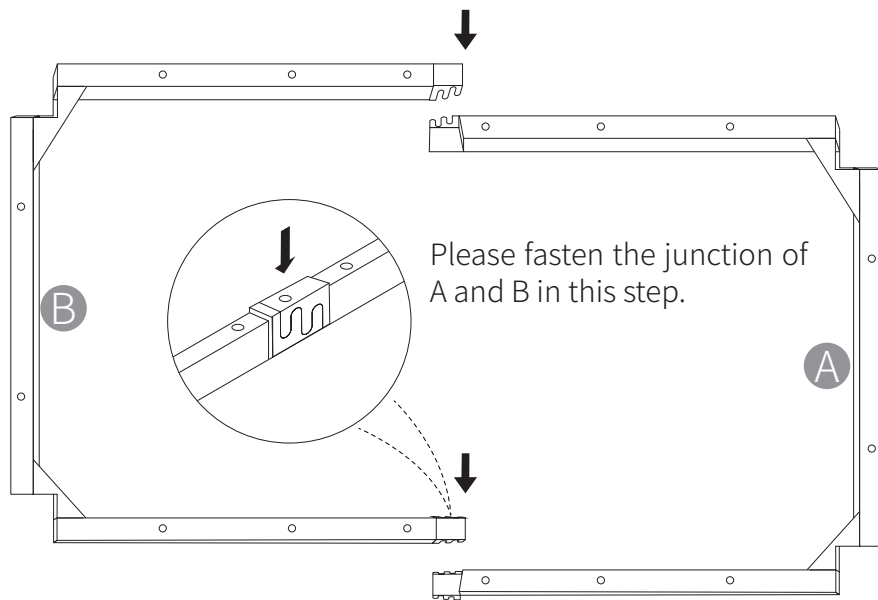


## Important

1. Before you begin: Lay out all parts on a clean surface to check if the tags and numbers are correct.
2. Don't screw tightly before all the screws are put into the corresponding holes.
3. Please use the screws correctly, otherwise you might damage the desk panel.
4. We highly recommend you to watch the installation guide video on our Amazon product page when you begin to assemble the desk.

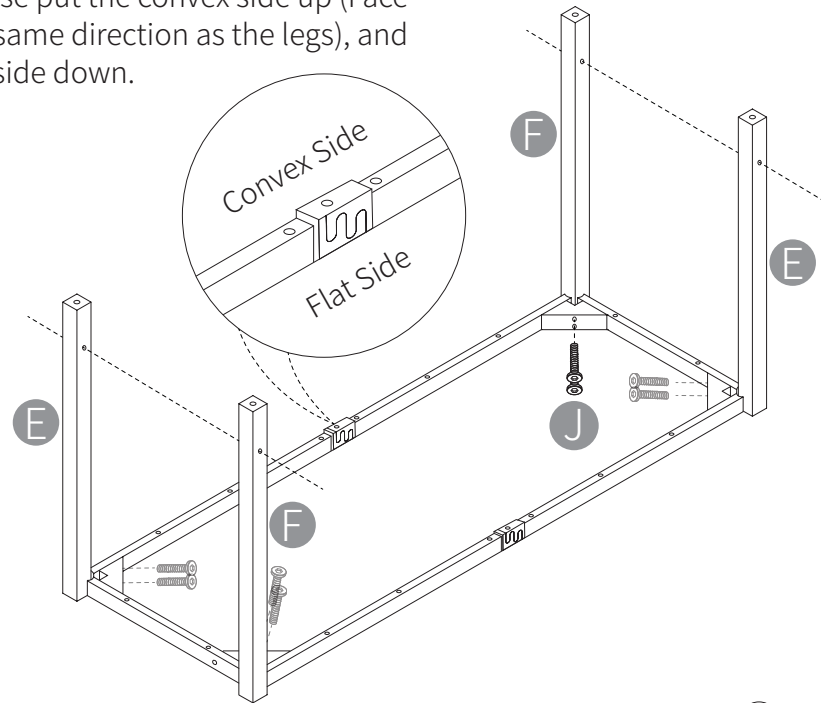
## Assembly Instruction

### Step 1



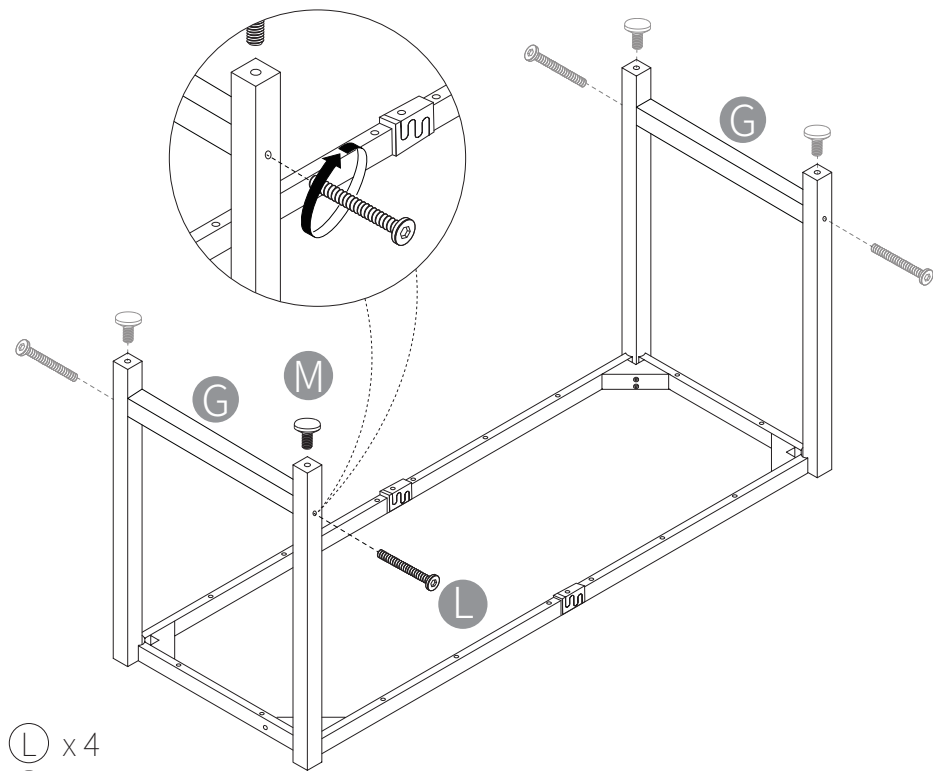
### Step 2

Please put the convex side up (Face the same direction as the legs), and flat side down.



(J) x 8

### Step 3

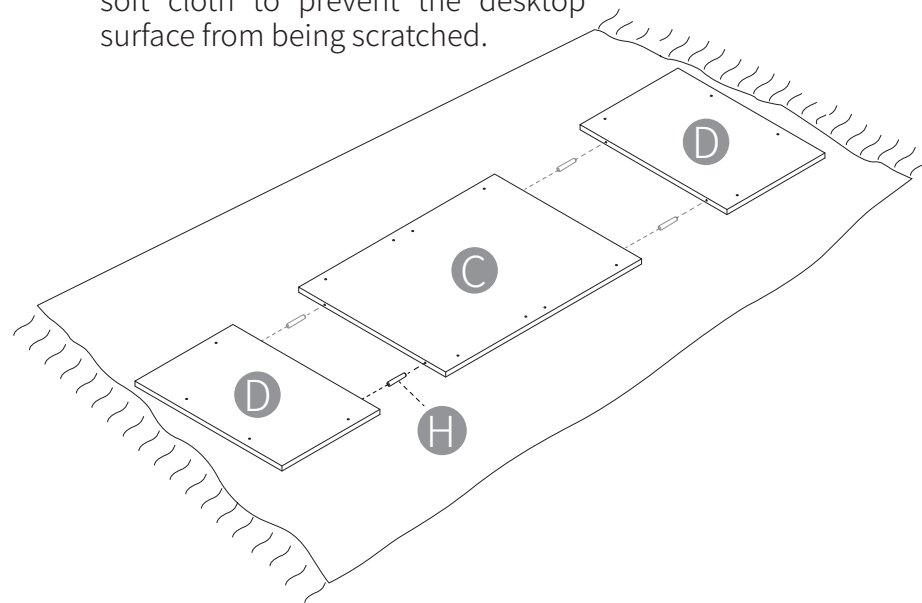


(L) x 4

(M) x 4

### Step 4

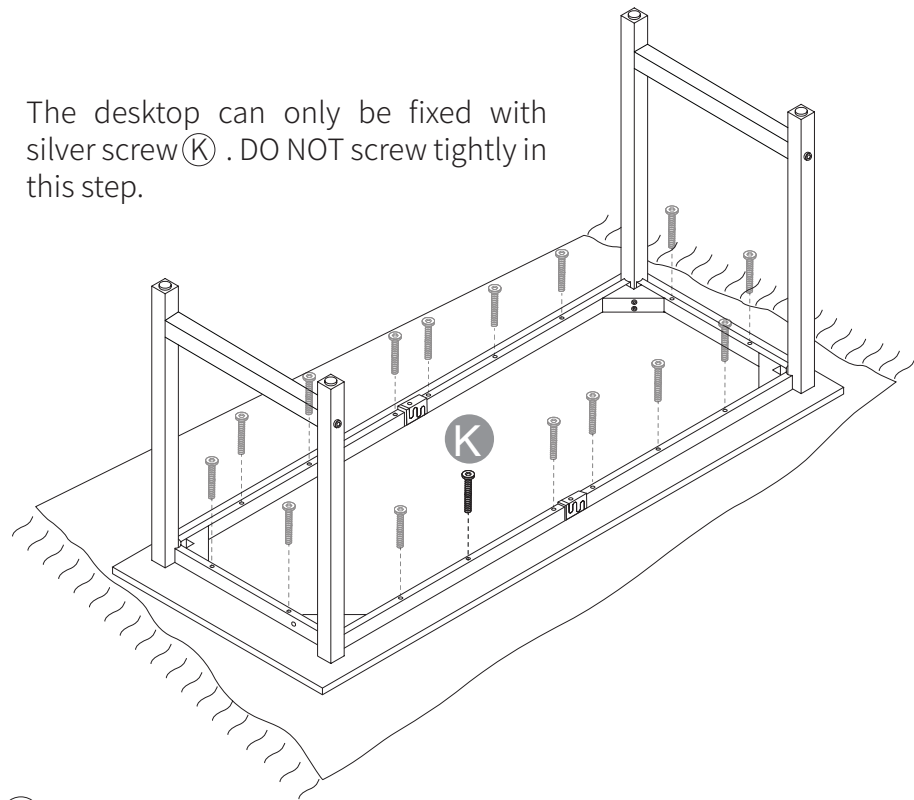
Lay out the desk board on a clean soft cloth to prevent the desktop surface from being scratched.



(H) x 4

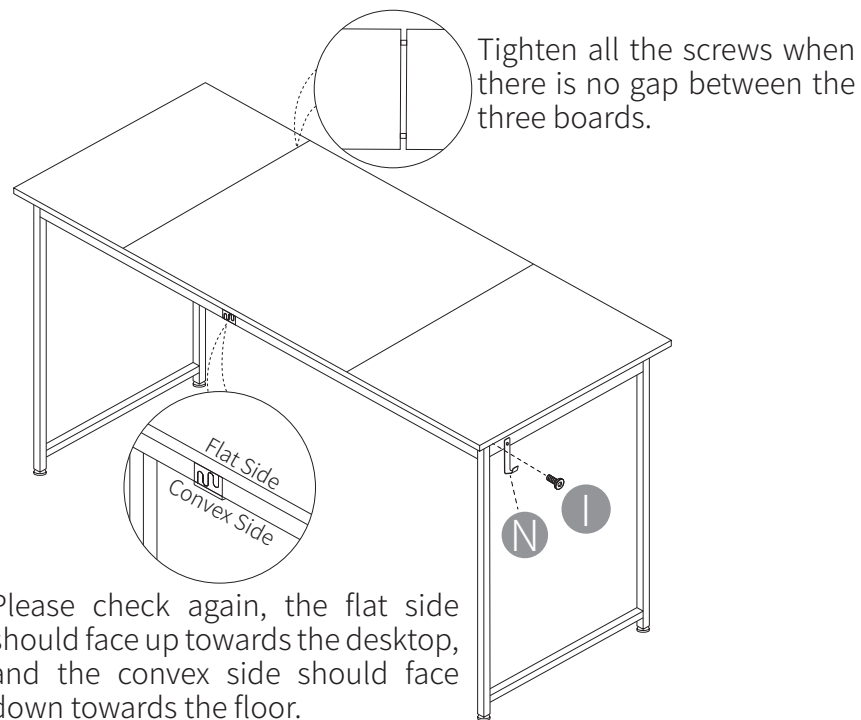
## Step 5

The desktop can only be fixed with silver screw (K) . DO NOT screw tightly in this step.



(K) x 16

## Step 6

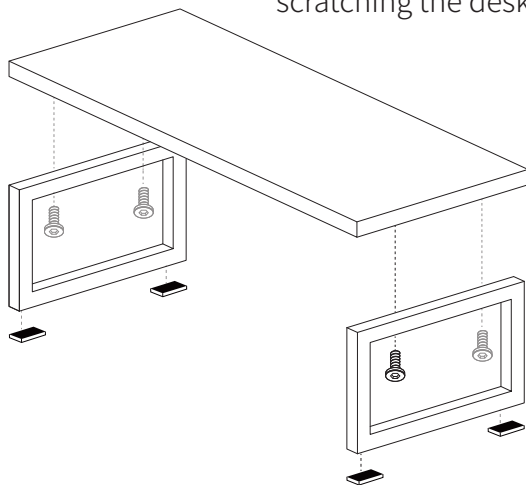


Please check again, the flat side should face up towards the desktop, and the convex side should face down towards the floor.

(I) x 1

## Step 7

Stick the sponge pads to the bottom of the small table leg to prevent scratching the desktop.



You can put this small table anywhere on the desktop of the big desk as you want.