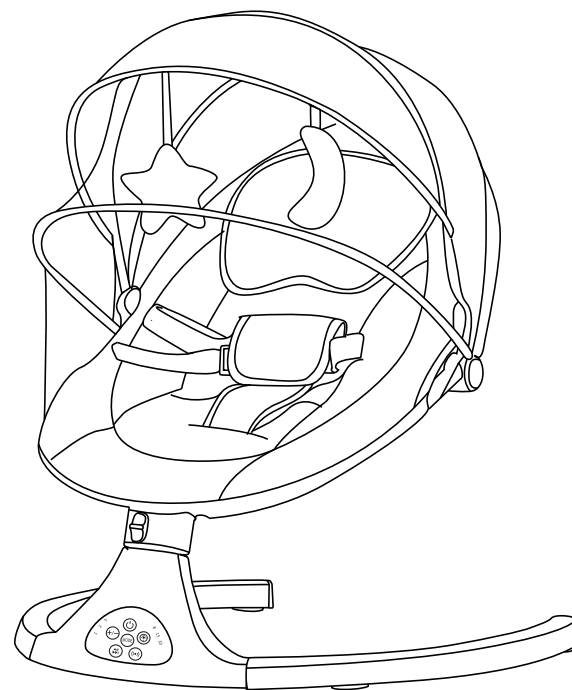


Instruction Manual

Baby Swing



Please read this manual carefully before install and use,
otherwise it may affect the safety of children

content

一、Content	1
二、Product Specifications	2
三、To know the product	3
Product List	3
product structure	3
cleaning and washing	4
Assembly details	4
safety instructions	5
Product power	5
四、The use of products	6
function usage	6
Remote Control Instructions	7
Panel Description	7
五、Notice	8
六、After-sales service	9

After-sales service card

Thank you for purchasing our company's products. For your rights and interests, please keep the after-sales service card properly. If you have any product quality problems, please contact the dealers.

name		phone	
product name			
purchase date			
address			

Notice

- From the date of purchase, for normal users, the circuit board parts enjoy one year of free maintenance service, and the whole machine enjoys one year of free maintenance service. The product outside plastic is not covered by the warranty.
- Other consumables and accessories are not covered by the warranty;
- Please show the after-sales service card and purchase proof or invoice to be valid when repairing.

Non-warranty coverage

- Incorrect use and human-induced damage
- Lost or damaged after-sale service card
- Damaged due to force majeure such as natural disasters

Thank you for using this product. We are committed to serving consumers with better products, more thoughtful service and more favorable prices. Our company has more products for you to choose!

Product Specifications

Product name	Multifunctional electric swing
Input voltage	100-240V-50/60Hz
Output voltage	DC5V、1A
Applicable age	0-12 months, weighing less than 12 kg
Production date	marked on the packaging or product itself
Warning	Do not use adapters which not provided with this product

Notice

- 1) The power terminals must not be short-circuited
- 2) Do not use adapters which not provided with this product to power the product.
The input power of the adapter is 100-240V~50/60Hz.
The output voltage and electric current are DC5V, 1A.
- 3) When using the adapter, keep the adapter away from children
- 4) Adapters used for swings should be regularly inspected for power cord sockets, accessories and other parts, and should be stop using if there is any damage.

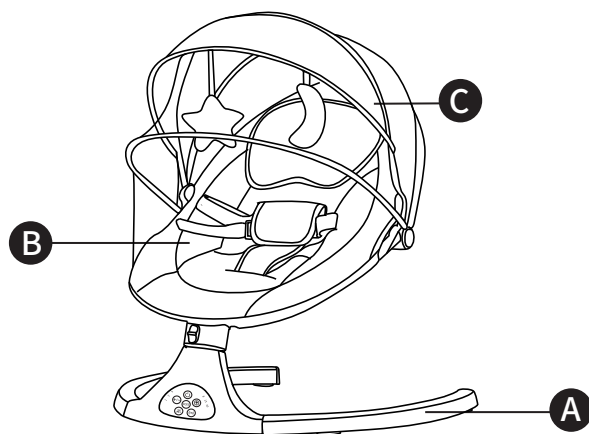
Product List

Please check the quantity of the contents before use, if there are any missing parts, please contact the seller.

NO.	Name	Quantity
A	base	1
B	Seat set	1
C	canopy set	Optional
Accessories package: manual x1, DC cable x1 (gift) adapter x1, remote control x1		

Product structure

The pictures in this manual may be different from the product, please refer to the actual items.



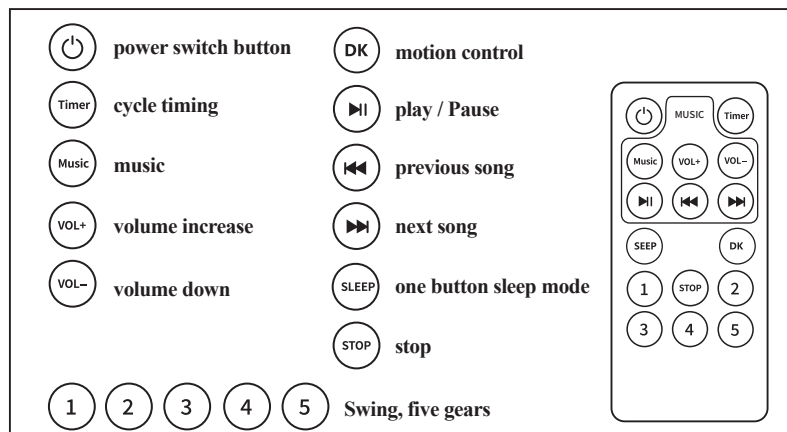
3

Warning

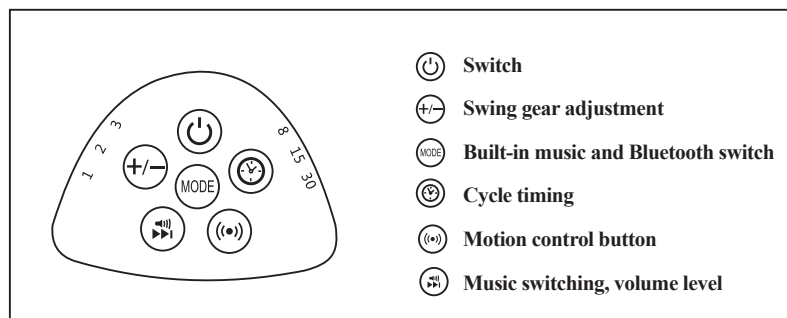
1. Must use seat belt when using this product!
2. Do not leave unattended children alone in the product
3. Suitable age: 0-12 months, weighing less than 12 kg
4. Do not use toy sticks to pick up or move swinging.
5. Do not lift or move this product when children are in it
6. It is strictly forbidden to put other things on the toy stick except for the matching toys!
7. This product is strictly prohibited to be used in high places (such as: countertops, tables, stairs or other places higher from the ground) to prevent the danger of falling!
8. When using this product, please place this product on a flat surface, and it is not allowed to use it on a non-flat surface!
9. Pay attention to the danger of asphyxia : Please do not use it on soft objects to prevent asphyxia (such as beds, sofas, etc.)
10. Please do not use it for babies who can sit up alone to prevent hidden accidents such as choked or strangled by a seat belt
11. Do not let children use this product as a toy!
12. This product should not be opened or folded until children are away from it!
13. This product can be used for a long time.
14. When this product is connected to a music player, make sure that the volume of the player is setting to the low level!
15. If any part is damaged or missing, please do not use this product unless a replacement part has been reviewed by the manufacturer, do not use a substitute easily !
16. stay away from fire!
17. The bassinet can only be used when the locking mechanism of the folding system is engaged.

8

Remote Control Instructions



Panel Description



Warning ! This product should only be assembled and cleaned by adults

Cleaning and washing

Seat frame set: Remove the seat frame set; washed by hand in cold water.

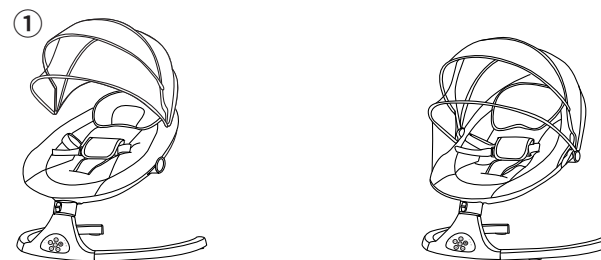
Toys: can be washed by hand or machine; soaked in water and added with soft detergent, scrubbed by a soft brush; filtered and dehydrated with clean water, or directly put into the washing machine for washing and dehydration, and put them in a cool place to dry.

Fabric: Flannel, hand wash, machine wash strictly prohibited.

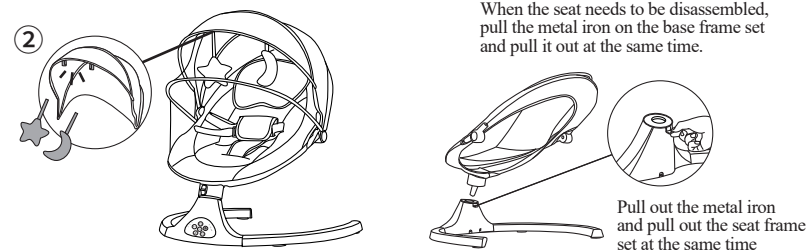
Inner filling: fire-resistant rigid resin cotton. **warning! Bleaching, dehydration, drying are prohibited!**

Assembly details

Insert the seat frame set into the base frame set, optional ①, electric swing + canopy set.

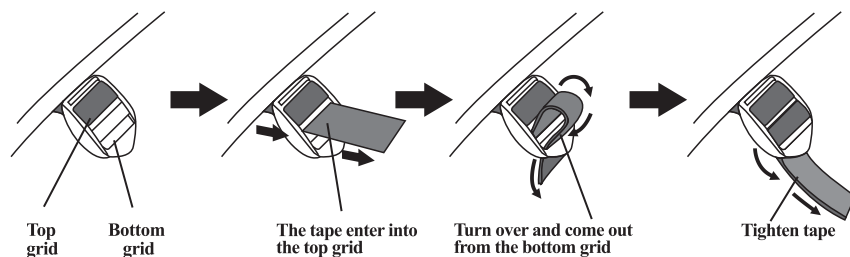


Toy doll installation: Put two toy doll on the hooks which on the inside of the canopy ②, and stick the toy doll velcro.

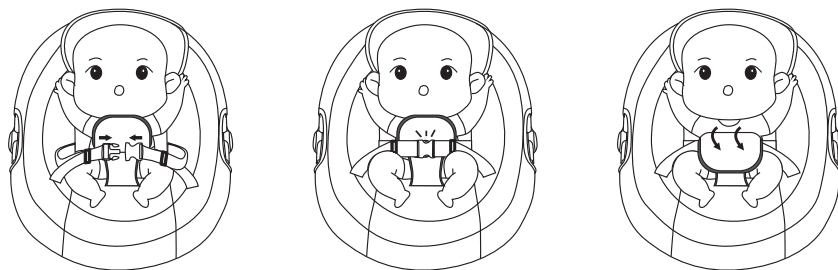


Safety instructions

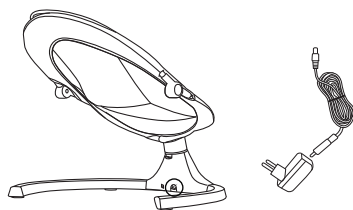
Fasten the strap on the adjusted button as shown below, and adjust the required length



Put the baby in the seat cloth, fasten the safety buckle, and then pull down the cover



Product power



1. The DC plug can be inserted into the AC power supply of 100-240V-50/60Hz
2. The DC connector can be connected to the power bank for power supply
3. Adapter output parameters: voltage is 5V, electric current is 1A. Do not use adapters at other specifications.

function usage

(一) ⏻ Power switch button:

1. Press the first time, the indicator light is on, the power is turned on
2. Press the second time, the indicator light is off, and the power is cut off.

(二) ⬆️ Gear increase/decrease button:

There are 5 kinds of swing options in the gear adjustment, and the adjustment starts from the stop gear to increase, and the current gear is relative to the on and off of the gear indicator light.

The swing angle is about 0°, 18°, 21°, 23°, 25°, 31vv ° (no load) in turn, load will be slightly reduced
Note:

1. When the gear is in neutral and there is no timing, the gear indicator light and timing light will flash;
2. When a jam is detected, the gear will be automatically closed, and the gear indicator light will flash to remind

(三) ⌚ Timing button:

- Press the first indicator light is on for 8 minutes
Press the second indicator light twice is on for 15 minutes
Press the third indicator light three times is on for 30 minutes

When the timer expires, all functions stop and enter standby power saving mode; if the timer function is not switch on, other functions will work indefinitely until running out of the battery.

Note:

When the 1st gear is in neutral and there is no timing, the gear indicator light and timing light will flash .

(四) 🔊 Music play volume buttons:

- Press it and start to play system music
Short press to play next music
Press and hold until hearing the volume change and then not press to adjust the volume cyclically
Press and hold for about 2 seconds to turn off the music

(五) 🔄 Motion control button:

You can enter or out of the motion control mode, and it will automatically enter the motion control mode when the time is up.

Turn on the timing, after the timer expires, it will enter the motion control mode, and turn on the motion control light .

In the motion control mode, the cradle will automatically swing after it detects that there is a slight left and right shaking, and then enter the 1st gear. Timing 8 minutes, turn on the music

(六) 📶 Bluetooth connection:

Turn on the mobile phone Bluetooth to connect WAB_BABY", after the connection is successful, you can directly play the song.

(七) ⏸️ MODE button:

The MODE button is the switch button for internal music and USB or Bluetooth. The button is invalid when there is no USB and Bluetooth:

(八) If the rocking chair shakes badly, please check that the machine is on the flat.

This device complies with part 15 of the FCC Rules. Operation is subject to the following two conditions: (1) this device may not cause harmful interference, and (2) this device must accept any interference received, including interference that may cause undesired operation.

Any changes or modifications not expressly approved by the party responsible for compliance could void the user's authority to operate the equipment.

NOTE: This equipment has been tested and found to comply with the limits for a Class B digital device, pursuant to Part 15 of the FCC Rules. These limits are designed to provide reasonable protection against harmful interference in a residential installation. This equipment generates, uses and can radiate radio frequency energy and, if not installed and used in accordance with the instructions, may cause harmful interference to radio communications. However, there is no guarantee that interference will not occur in a particular installation.

If this equipment does cause harmful interference to radio or television reception, which can be determined by turning the equipment off and on, the user is encouraged to try to correct the interference by one or more of the following measures:

- Reorient or relocate the receiving antenna.
- Increase the separation between the equipment and receiver.
- Connect the equipment into an outlet on a circuit different from that to which the receiver is connected.
- Consult the dealer or an experienced radio/TV technician for help.

The device has been evaluated to meet general RF exposure requirement. The device can be used in portable exposure condition without restriction