

***VU202R*_SPEC_EN**

Rev.	Date	Contents of Revision Change	Remark
1.0.0	2024-08-27	Initial release	WSY

INTRODUCTION

VU202R Router is exquisite, portable and small wireless router which designed for those whose mobile devices like smart phone, PADs, notebook to surf the internet. Minibox V1.0 Router has 2FE RJ45 ports which support both wired connection and wireless connection at the same time. It allows users not only able to share their internet by wired connection but also wireless connection.

VU202R Router comply with internet standard IEEE802.11b, IEEE802.11g and IEEE802.11n, maximum wireless rate can reach to 150Mbps, with 1x2 MIMO technology, the range of transmission is 8 times than that of original IEEE802.11g standard, wireless signal is more Powerful, wider extension. More than three colours can be choice, white, black, blue and etc....

FEATURES

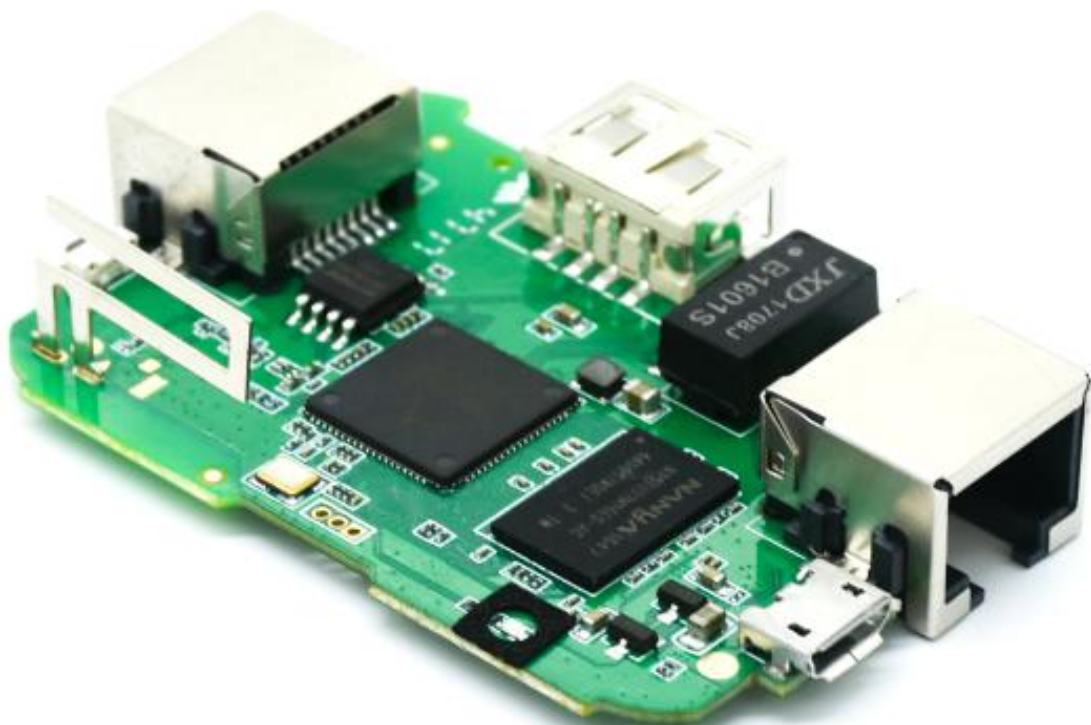
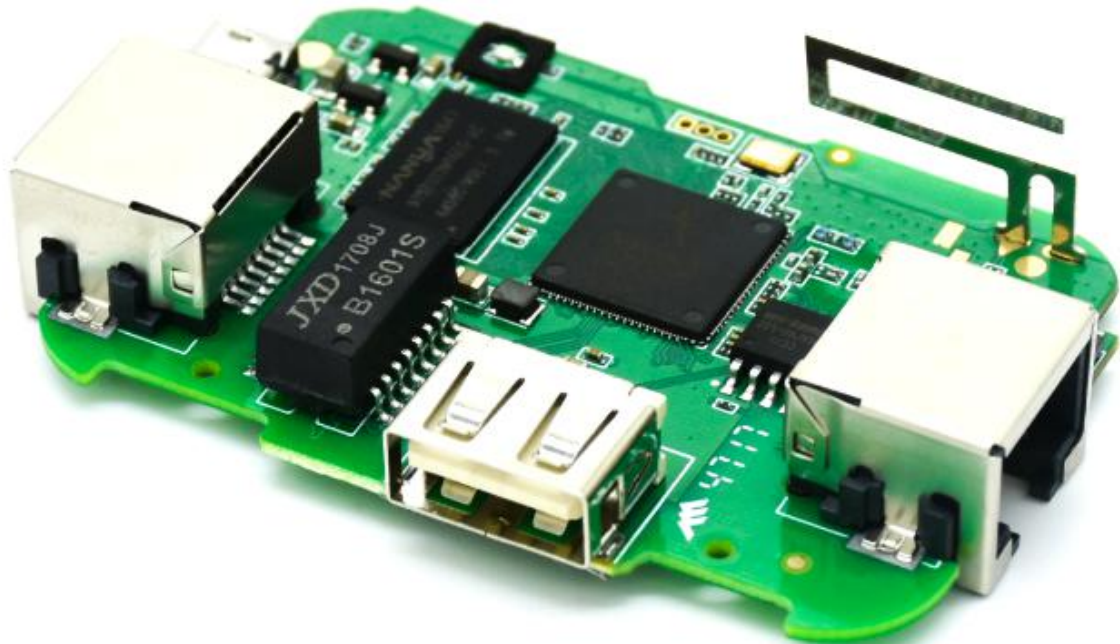
- CPU: AR9331 Mips 24Kc 400MHz.
- DDR: 64MB
- Flash: 16MB (8MB/16MB optional)
- Compatible with IEEE 802.11 b/g/n. Wireless speed up to 150 Mbps.
- Compact and portable, small enough to take on the road.
- Powered through a 5V Micro USB port by an external power adapter.
- Compatible with almost all 2.4GHz WiFi devices.
- Supports AP, Router, Client, Bridge operation modes.
- Supports WEP, WPA/WPA2, WPA-PSK/WPA2-PSK encryptions.
- 1 * USB Port (Optional).
- 1 * System Status LED
- 1 * 10/100Mbps WAN Port
- 1 * 10/100Mbps LAN Port
- Size: 64mm x 44.5mm x 22.3mm.
- Antenna Type: Built-in smart omnidirectional antenna.
- More than three colours can be choice, white, black, blue and etc...
- Supported by Openwrt/LEDE.

- Can Sale PCBA,Casing and PCBA+Casing.

Interface	1 10/100Mbps WAN Port
	1 10/100Mbps LAN Port
	1 USB Port
	1 RESET Button
	1 System Status LED
	1 UART console(in the case)
	1 Micro USB (5V/0.5A Input)
Wireless Standards	IEEE 802.11b/g/n
Indicator	System
Antenna Type	Built-in smart omnidirectional antenna
Dimensions	64mm x 44.5mm x22.3mm
CPU	AR9331
DDR2	64MB
Frequency	2.4 ~ 2.484GHz
Signal Rate	11n: Up to 135Mbps(dynamic)
	11g: Up to 54Mbps(dynamic)
	11b: Up to 11Mbps(dynamic)
EIRP	<20dBm (EIRP)
Reception Sensitivity	135M:-70dBm@10%PER
	65M:-73dBm@10%PER
	54M:-76dBm@10%PER
Wireless Modes	AP Mode, Router Mode
Wireless Functions	Enable/Disable Wireless Radio, WDS Bridge, WMM, Wireless Statistics
Wireless Security	64/128/152-bit WEP, WPA/WPA2, WPA-PSK/WPA2-PSK
WAN Type	Dynamic IP/Static IP/PPPoE/ PPTP/L2TP
DHCP	Server, Client, DHCP Client List, Address Reservation
Quality of Service	WMM, Bandwidth Control

Port Forwarding	Virtual Server, Port Triggering, UPnP, DMZ
Dynamic DNS	DynDns, Comexe, NO-IP
VPN Pass-Through	PPTP, L2TP, IPSec (ESP Head)
Access Control	Local Management Control, Host List, Access Schedule, Rule Management
Firewall Security	DoS, SPI Firewall IP Address Filter/MAC Address Filter/Domain Filter IP and MAC Address Binding
Management	Access Control Local Management Remote Management
Certification	CE, FCC, RoHS
System Requirements	Microsoft® Windows® 98SE, NT, 2000, XP, Vista™ or Windows 7, MAC® OS, NetWare®, UNIX® or Linux
Environment	Operating Temperature: 0°C~40°C (32°F~104°F)
	Storage Temperature: -40°C~70°C (-40°F~158°F)
	Operating Humidity: 10%~90%
	non-condensing Storage Humidity: 5%~90% non-condensing

PICTURES(PCBA)



CASEING-WHITE



CASEING-BLACK



CASEING-BLUE



STRUCTURE

	Length	Width	Height
Size	64mm	44.5mm	22.3mm

OPERATING ENVIRONMENT

Working temperature: 0 °C to 40 °C;

Storage Temperature: -40°C~70°C (-40°F~158°F)

Humidity: 10% to 90%RH;

non-condensing Storage Humidity: 5%~90% non-condensing

FCC Statement

This equipment has been tested and found to comply with the limits for a Class B digital device, pursuant to part 15 of the FCC Rules. These limits are designed to provide reasonable protection against harmful interference in a residential installation. This equipment generates, uses and can radiate radio frequency energy and, if not installed and used in accordance with the instructions, may cause harmful interference to radio communications. However, there is no guarantee that interference will not occur in a particular installation. If this equipment does cause harmful interference to radio or television reception, which can be determined by turning the equipment off and on, the user is encouraged to try to correct the interference by one or more of the following measures:

- Reorient or relocate the receiving antenna.
- Increase the separation between the equipment and receiver.
- Connect the equipment into an outlet on a circuit different from that to which the receiver is connected.
- Consult the dealer or an experienced radio/TV technician for help.

Caution: Any changes or modifications to this device not explicitly approved by manufacturer could void your authority to operate this equipment.

This device complies with part 15 of the FCC Rules. Operation is subject to the following two conditions: (1) This device may not cause harmful interference, and (2) this device must accept any interference received, including interference that may cause undesired operation.

RF Exposure Information

This equipment complies with FCC radiation exposure limits set forth for an uncontrolled environment. This equipment should be installed and operated with minimum distance 20cm between the radiator and your body.