

Keyboard case



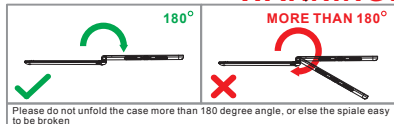
Scan to Contact seller support

Caution: To properly operate this product, please read the user manual thoroughly.

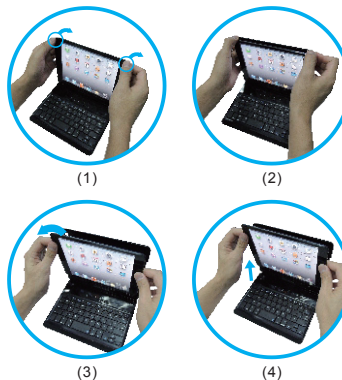
NOTE:
Before pairing and connecting, please upgrade the tablet's system to OS 13.4 and above

The keyboard and trackpad will be asleep after 10 minutes without any operation. Please press any key to wake up the keyboard when you need to operate the keys and trackpad.

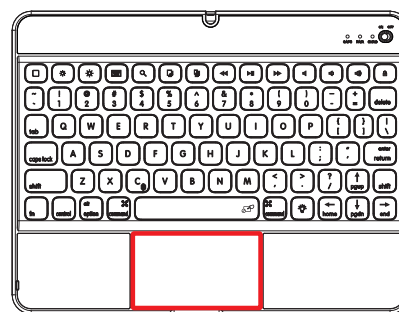
Seller Support Contact
sales@lenrich.com
www.lenrich.com

WARNING:Schematic diagramUsing

- 1) Open the protective case
- 2) 180 degrees rotate protective case
- 3) 360 degrees rotate
- 4) Adjust the rotation axis angle

Installation and removal

- 1) Removing back protective piece. Hold Tablet PC on both sides (picture) gently push back cover off the Tablet PC with thumb (back piece held in place by two tabs.)
- 2) Proceed to "peel" cover away from Tablet PC
- 3) Take Tablet PC out
- 4) Take Tablet PC out upwards

KeyboardWelcome

Congratulations on your selection for this wireless Bluetooth keyboard case. This ultra slim keyboard case is manufactured with the highest quality materials to compliment your Tablet PC. This is an ideal accessory for transportation, working, and much more!

Overview

□ Main screen/ESC	⏪ Prev/Track	📄 Copy
* Brightness -	⏩ Play/pause	📄 Paste
☀ Brightness +	⏮ Next/Track	fn Function
🖥 Virtual Keyboard	🔇 Mute	⌘ Command
🔍 Search	🔊 Volume -	📶 Pair
🔒 Lock screen	🔊 Volume +	💡 Backlight

fn+C0: Turn on Bluetooth pairing
control+Space: Switch input method
command+tab: Switch recently opened APP

fn+pgup: Page Up
fn+home: Home

fn+pgdn: Page Down
fn+end: End

1. Low battery alarm.
2. 30 seconds without key press, the backlight will be off automatically.
3. 10 minutes without key press, the keyboard will sleep into power saving mode.
4. The backlight function will be off automatically when it is low battery.
5. Three levels backlight brightness: low-medium-high-off.
6. Press (☀ +↑ or ☀ +↓) to adjust the color.
7. Seven colors backlight.
(green-blue-white-yellow-purple-cyan blue-red)

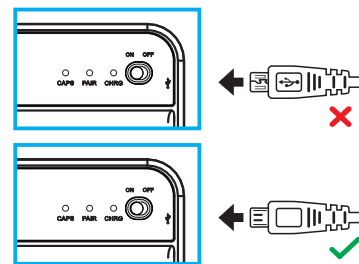
Meaning to LED light colors

Blue LED blinking: Pairing
Red LED on: Charging
Green LED on: Battery is fully charged
Green LED blinking: Low in Battery
White LED on: Caps lock

ChargingRecharging the keyboard

1. The keyboard arrives partial charged
Before first use, charge the keyboard fully.
(Solid green LED)

2. To charge the keyboard:
a) Locate micro-USB cable from the package or use your own.
b) Plug in the micro-USB (small tip) into the keyboard and the other end into a USB port.
(Recommend: 5V/1A input)



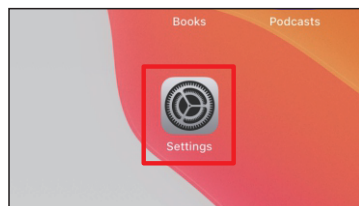
3. After the first full charge, it should take at least 2 hours to recharge fully from low power.

Touch Setting Instruction

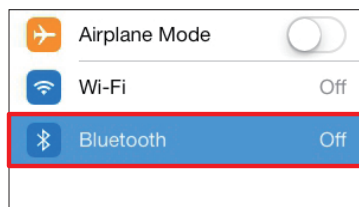
- ⚠ Before pairing and connecting, please upgrade the tablet's system to OS 13.4 and above

Tablet Bluetooth connection

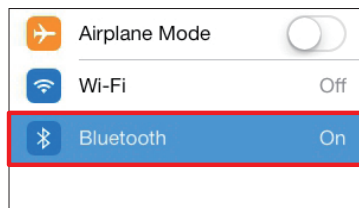
1. Turn on the Bluetooth keyboard, move the button to "ON", indicator lights up.
2. Turn on the iPad Bluetooth, "Settings=>Bluetooth=>turn on Bluetooth", then press fn+C on the keyboard and Bluetooth pairing will appear, look for and connect to the "Bluetooth Keyboard". After the connection is successful, you can use the keyboard to enter and chat.
- ⚠ 3. The keyboard and touchpad will enter to sleep mode to save the power after 10 minutes without any operation. if you want to wake up the keyboard, you need to click any keys on the keyboard first, then you can operate the keys and touch pad.
- ⚠ 4. When the keyboard power is low, the green indicator light will flash and the keyboard backlight will turn off automatically then it can not turn on again; touch pad may Unusable, please charge it before using it.



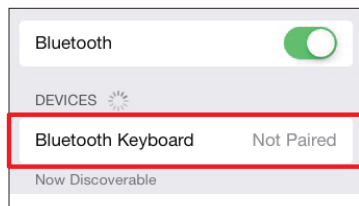
(1)



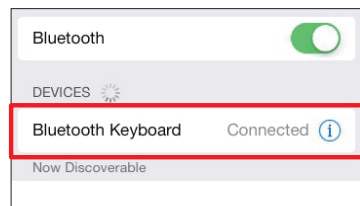
(2)



(3)



(4)



(5)

Touch simulation operation instructions

⚠ Turn on/off the touchpad

Click Hold and slide
Sliding

Single finger swipe: Cursor movement



Single finger click: Click



Use one finger slide the cursor over the top of the screen: Open the notification center

Use one finger to slide the cursor over the bottom of the screen:
1) APP switch interface will open on the main screen
2) The dock will pop up when inside the app

After opening the APP, one finger slides the cursor over the bottom of the screen twice:
The first time you open the dock, the second time you will go to the home screen

Two-finger click: Auxiliary tap



Swipe down with two fingers: Open search from the home screen



Swipe up or down with two fingers: Scroll up or down



Swipe left or right with two fingers: Home screen scroll left or right



Swipe up with three fingers: Return to home screen



Swipe down with three fingers: Return to the previous APP



Swipe left or right with three fingers: Switch the recently opened APP



Four-finger click: Screenshot

Troubleshooting

If the keyboard is not working with the Tablet PC (or other Bluetooth devices) make sure:

- 1) The Bluetooth function on the iPad (or other Bluetooth devices) is enabled.
- 2) The Bluetooth keyboard is within 33 feet of the iPad.
- 3) The passkey is entered correctly.
- 4) Restart your device.
- 5) Make sure the keyboard is charged, recharge if low.
- 6) If the pairing between the keyboard and tablet PC is failed or wrong character and typing delayed. Please do pairing again with the following procedures:

- Delete all the Bluetooth device on the tablet PC
- Switch off the Bluetooth function on the tablet PC
- Reboot the tablet PC
- Switch on Bluetooth function on your tablet pc and pair again

Product Specifications

- 1) Transmit Range : up to 10 meters
- 2) Range of Frequency : 2.4 Ghz Spectrum
- 3) Operating Voltage : DC 3.7 V (powered by Li-ion)
- 4) Operation current : < 5 mA
- 5) Standby current : 1.0 mA
- 6) Sleep current : < 0.1 mA

This device complies with Part 15 of the FCC Rules: Operation is subject to the following two conditions:
1. This device may not cause harmful interference and
2. This device must accept any interference that is received, including any interference that may cause undesired operation.