



2017-2022 Ford Super Duty Rear Bumper Installation Instructions

Thank you for purchasing our 2017-2022 Ford Super Duty Rear Bumper!

Installation Notes:

- If equipped, this bumper will be relocating the rear parking sensors from their factory location. Some unusual behavior could occur from the sensors being out of their original location.

Tools required:

- 21mm Socket
- 13mm Socket
- 3/4" Socket
- 9/16" Socket or Wrench
- 4mm Allen Head
- 1/8" Allen Head
- 3/8" Socket or Wrench
- Ratchet
- Phillips Head Screwdriver

Possible Kit Combinations

Use the charts below to determine which combination of boxes you will receive based on the kit that was purchased. Each box should have a barcode with the kit part number listed on it.

B4WK12720- Ford Super Duty Rear Bumper with Parking Sensors		
Qty	Kit Part Number	Kit Description
1	B4WK12713	Ford Super Duty Rear Bumper Prepack
1	B4WK12717	Ford Super Duty Rear Bumper Parking Sensors
1	B4WK12719	Ford Super Duty Rear Bumper Center Section

B4WK12721- Ford Super Duty Rear Bumper with Lights and Logo Brackets		
Qty	Kit Part Number	Kit Description
1	B4WK12713	Ford Super Duty Rear Bumper Prepack
1	B4WK12718	Ford Super Duty Rear Bumper Lights and Logo Brackets
1	B4WK12719	Ford Super Duty Rear Bumper Center Section

Contents of each box

Bill Of Materials for B4WK12713- Ford Super Duty Rear Bumper Prepack			
QTY	Part Number	Etch Number	Description
1	B4WK12710	N/A	Super Duty Rear Bumper Driver Wing Weldment
1	B4WK12711	N/A	Super Duty Rear Bumper Passenger Wing Weldment
1	B4W250919W	919BW	Super Duty Rear Bumper Driver Frame Bracket
1	B4W250920W	920BW	Super Duty Rear Bumper Passenger Frame Bracket
6	37C100HCS8Y	N/A	3/8"-16 x 1" Grade 8 Bolt
6	37NWSAFY	N/A	3/8" SAE Washer
8	50NWSAFY	N/A	1/2" SAE Washer
8	50CNNEOY/GC	N/A	1/2"-13 Nylock Nut
1	B4W125116	116	Super Duty Rear Bumper Driver Tag Light Bracket
1	B4W125117	117	Super Duty Rear Bumper Passenger Tag Light Bracket
1	B4W075041	041	Trailer Plug Bracket
12	10C62KBCS	N/A	10-24 x 5/8" Socket Cap Screw 18-8 SS
12	10CNNES	N/A	10-24 Nylock Nut 18-8 SS
4	90380A248	N/A	#10 x 3/4" Phillips Screw
4	98550A108	N/A	#10 Snap In Plastic Nut

Bill Of Materials for B4WK12717- Ford Super Duty Rear Bumper Parking Sensor Prepack			
QTY	Part Number	Etch Number	Description
1	B4W075051PN	051P	Super Duty Rear Bumper Driver Outer Sensor Bracket
1	B4W075052PN	052P	Super Duty Rear Bumper Passenger Outer Sensor Bracket
1	B4W125114PN	114P	Super Duty Rear Bumper Driver Inner Sensor Bracket
1	B4W125115PN	115P	Super Duty Rear Bumper Passenger Inner Sensor Bracket
16	.60C140KBC/A27380	N/A	M6-1 x 14mm Button Head Bolt

Bill Of Materials for B4WK12718- Ford Super Duty Rear Bumper Lights and Logo Brackets Prepack			
QTY	Part Number	Etch Number	Description
4	B4W075059PN	059P	Super Duty Rear Bumper B-Star Logo Bracket
4	B4W075050PN	050BP	Super Duty Rear Bumper Pod Light Bracket
16	.60C140KBC/A27380	N/A	M6-1 x 14mm Button Head Bolt

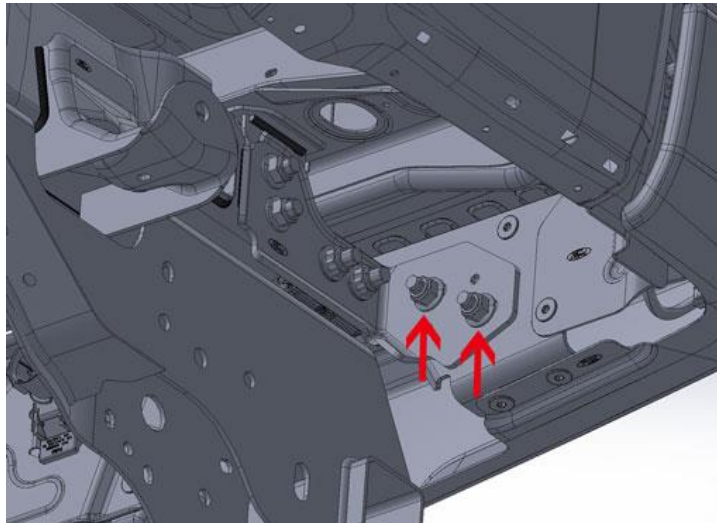
Bill Of Materials for B4WK12719- Ford Super Duty Rear Bumper Center Section Prepack			
QTY	Part Number	Etch Number	Description
1	B4WK12712	N/A	Super Duty Rear Bumper Center Section Weldment

Step 1:

Disconnect the trailer plug and the wiring harness going to the rear bumper. Disconnect any aftermarket wiring that is connected to the rear bumper as well.

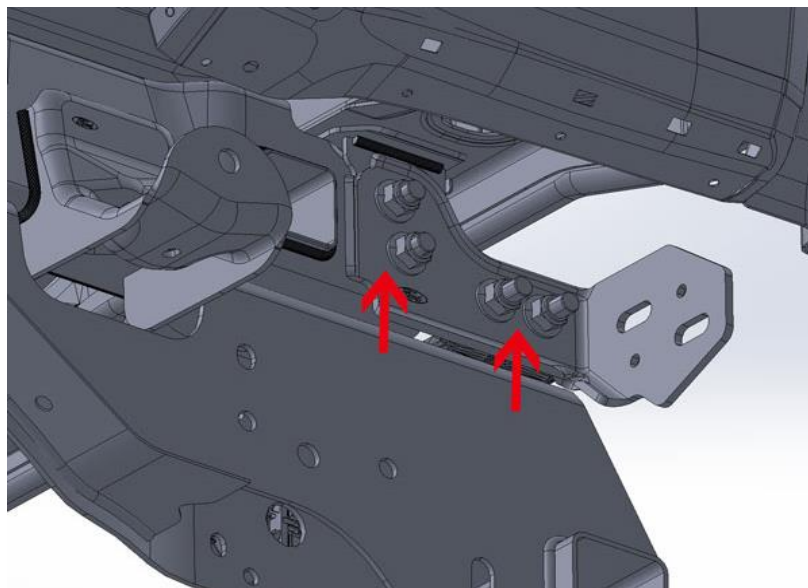
Step 2:

Using a 21mm socket, remove the 4 nuts, 2 per side, that are holding the bumper on to the rear frame brackets. Using a 13mm socket, remove the two bolts that are holding the bumper on to the hitch. You can now remove the rear bumper.



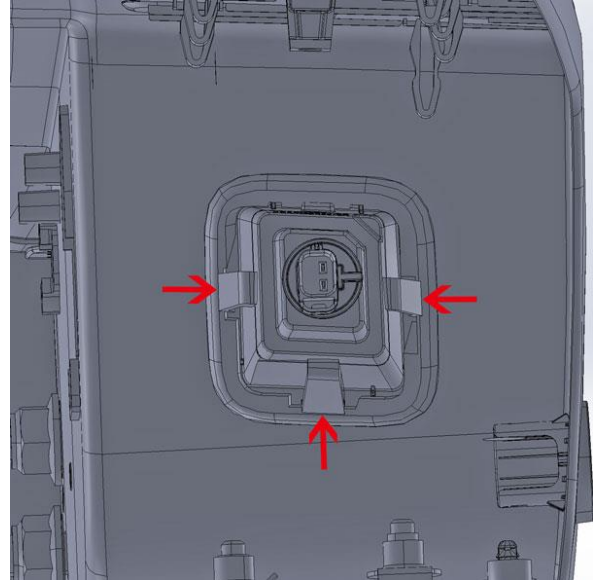
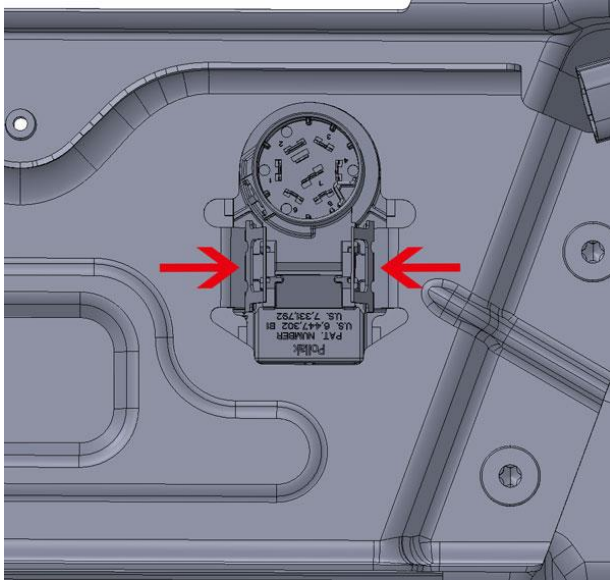
Step 3:

Using the 21 mm socket, remove the 4 nuts and bolt-strips for the frame brackets on each side of the frame. Save the hardware, it will be used to put the new frame brackets on.



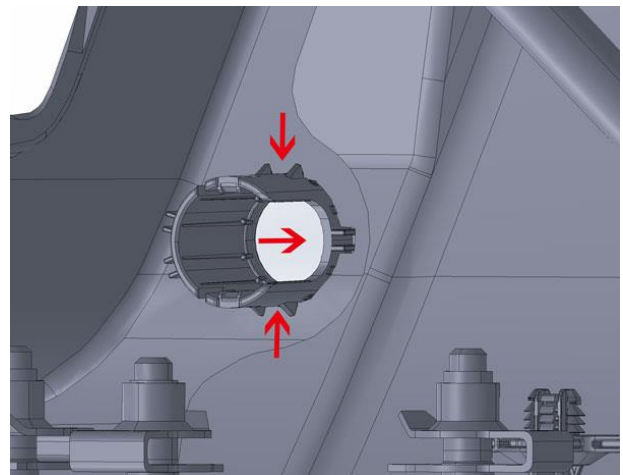
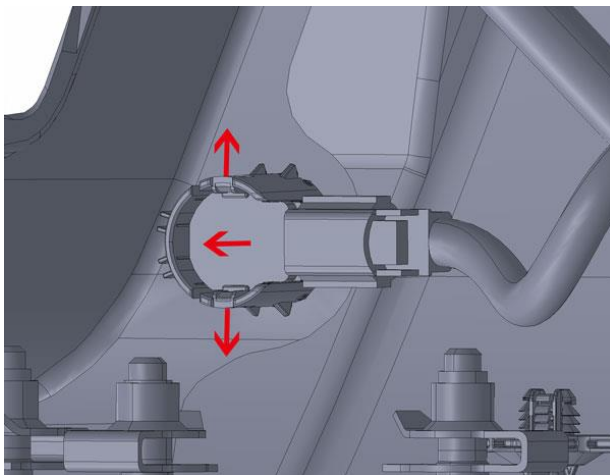
Step 4:

Unplug the license plate lights from the wiring harness. Squeezing the three plastic tabs, remove the tag lights from the rear bumper. Squeeze the two metal tabs on the back side of the trailer plug and remove it.



Step 5: (For parking sensor removal)

If applicable, unplug and remove the rear parking sensors from the bumper. Lift the two tabs on the outer ring and push the sensor out towards the inside of the bumper. Press in the outer ring tabs and push them out of the bumper. Make sure you keep the parking sensors in the correct orientation and location as they were on the rear bumper.

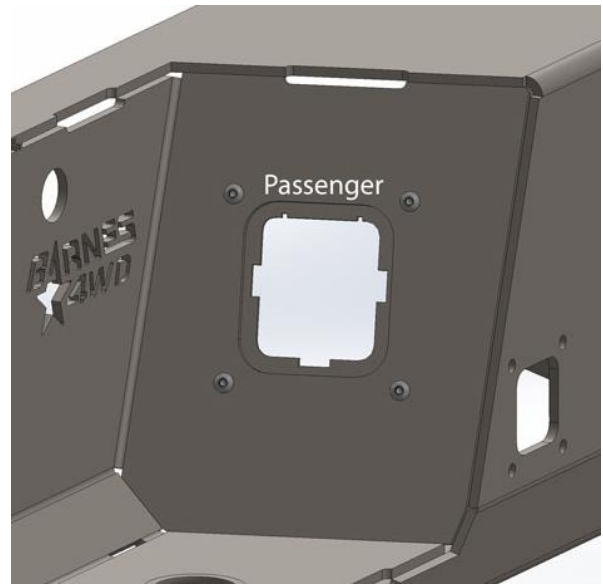
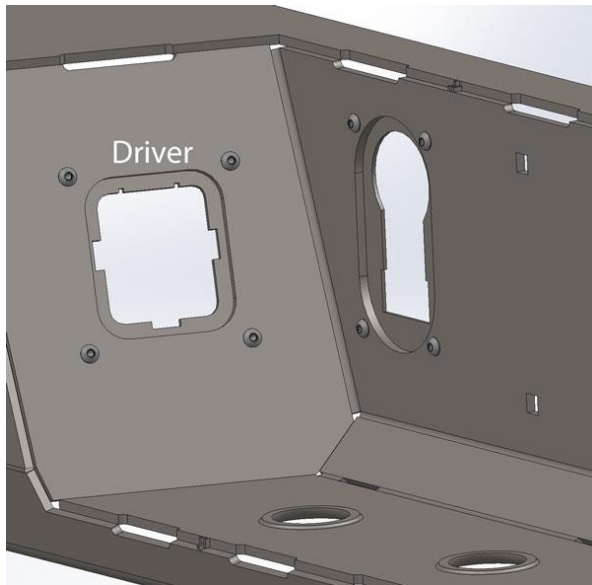


Step 6:

Remove the factory wiring harness from the rear bumper.

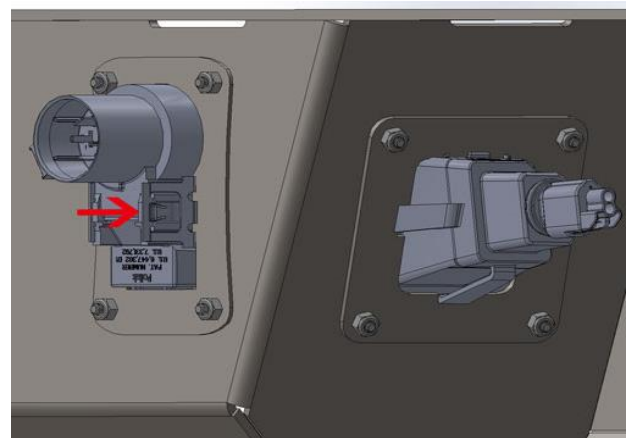
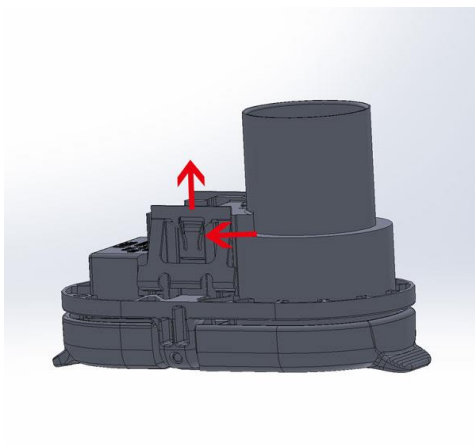
Step 7:

Install the new brackets for the tag lights and the trailer plug into your new rear bumper using the provided 10-24 Stainless Steel button head screws and nylock nuts. We recommend using some anti-seize on the bolts and nuts. The tag light bracket with the wider cutouts on the top will go on the passenger side.



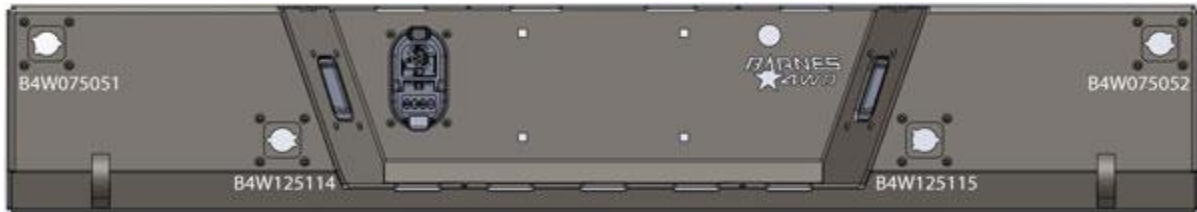
Step 8:

Install the tag lights into the new brackets in the rear bumper. For the trailer plug, remove the two metal tabs on each side of the plug using a flat head screwdriver. Slide the tabs off and place the trailer plug into the bracket. Once installed, slide the metal tabs back onto the trailer plug to lock it in place.



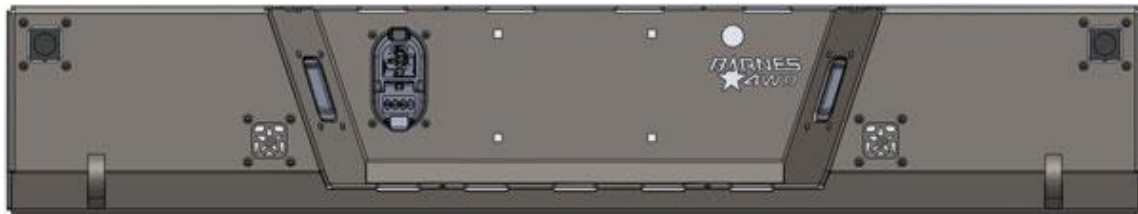
Step 9: (Only applicable to parking sensor install)

Using the chart below, install the rear sensor brackets into the rear bumper in their appropriate location and orientation using the provided 6mm button head screws. Install the sensors into their appropriate bracket. Reinstall the wiring harness and plug in the rear sensors, tag lights, and the trailer plug. You can skip Step 10.



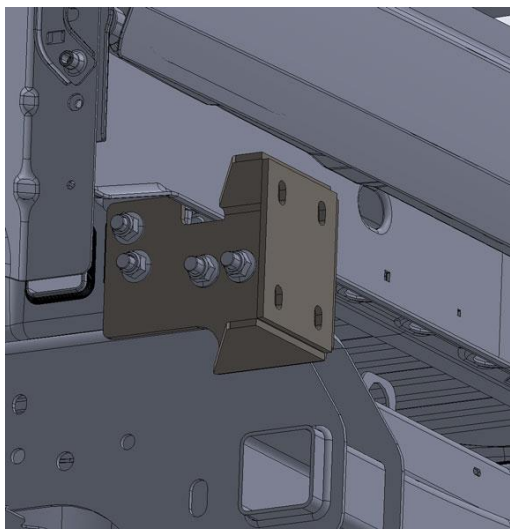
Step 10:

If applicable, install the Rigid Ignite Backup Light Kit pods to the pod brackets. If you are not installing lights, install the B-Star insert into the rear bumper using the provided 6mm button head screws.



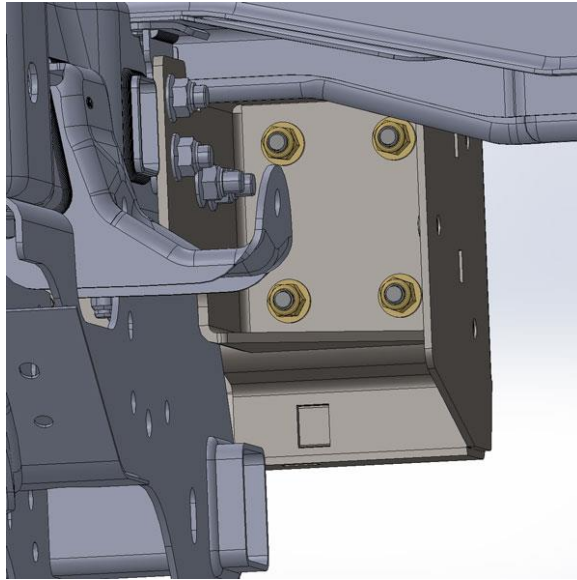
Step 11:

Install the new frame brackets onto the rear of the truck using the factory hardware. Make sure these brackets are installed on the correct side, they are side specific. Snug them up but leave them slightly loose to be able to adjust the bumper.



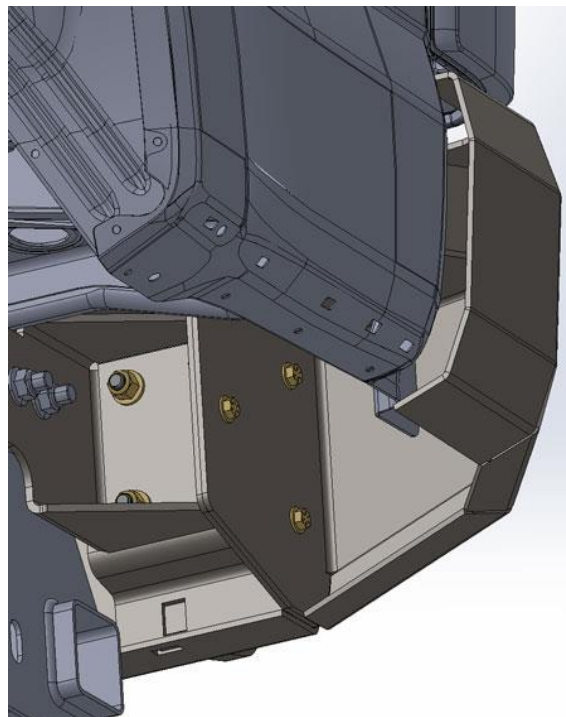
Step 12:

With the help of another person or jack, install the center section of the bumper onto the new frame brackets using the provided 1/2" nylock nuts and washers. Leave the hardware loose to adjust the bumper later.



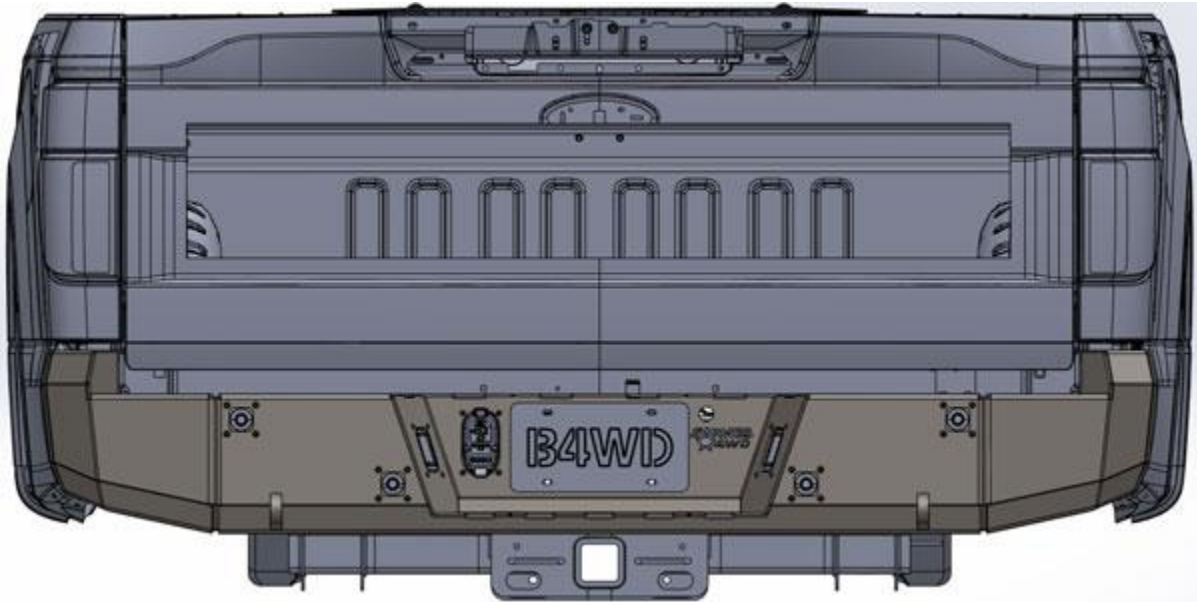
Step 13:

Install each wing on each side of the center section using the provided 3/8" bolts and washers. Leave the hardware slightly loose to be able to adjust the wings later.



Step 14:

Once all the hardware is installed, start adjusting the center section and the wings of the bumper to where you would like it to be. Once the bumper is centered and at the desired height, tighten the 1/2" nylocks. With the wings in their desired location, tighten the 3/8" bolts. With the frame brackets still loose, you can slightly rotate the bumper up to get the gaps underneath the taillights where you want them. Tighten all hardware once you are done.



Step 15:

Install the 4 provided license plate push nuts and install your license plate with the provided screws. Plug the trailer plug and the wiring harness back in.

**Congratulations you have completed the installation of your
Ford Super Duty Rear Bumper!**

Professional Services Disclaimer:

The content of all pages of this website (collectively, the "Website"), such as text, graphics, images, information and other material (collectively, "Content") is for informational purposes only. Any information furnished on this Website is not intended nor implied to be automotive advice and is not intended to replace personal consultation with a qualified automotive service technician, mechanic, or similar automotive professional.

Barnes 4WD has not examined the Content for accuracy, timeliness, completeness, appropriateness, or helpfulness. Barnes 4WD does not endorse any specific tests, products, procedures, opinions, or other information that may be mentioned on this Website. Your reliance upon information and Content obtained by you at or through this Website is solely at your own risk. IN NO EVENT SHALL BARNES 4WD BE LIABLE OR OTHERWISE RESPONSIBLE FOR ANY DAMAGE OR INJURY (INCLUDING DEATH) TO YOU, OTHER PERSONS, OR PROPERTY ARISING FROM ANY USE OF ANY PRODUCT, INFORMATION, IDEA, OR INSTRUCTION CONTAINED IN THE CONTENT.

BARNES 4WD DOES NOT MAKE ANY REPRESENTATION OR WARRANTY, EXPRESS OR IMPLIED, AT LAW OR IN EQUITY, WITH RESPECT TO ANY PRODUCT FEATURED ON THE WEBSITE, INCLUDING WITHOUT LIMITATION WITH RESPECT TO MERCHANTABILITY, FITNESS FOR ANY PARTICULAR PURPOSE, VALUE, VALIDITY, OR ENFORCEABILITY, AND ANY AND ALL SUCH OTHER REPRESENTATIONS OR WARRANTIES ARE HEREBY EXPRESSLY DISCLAIMED.