

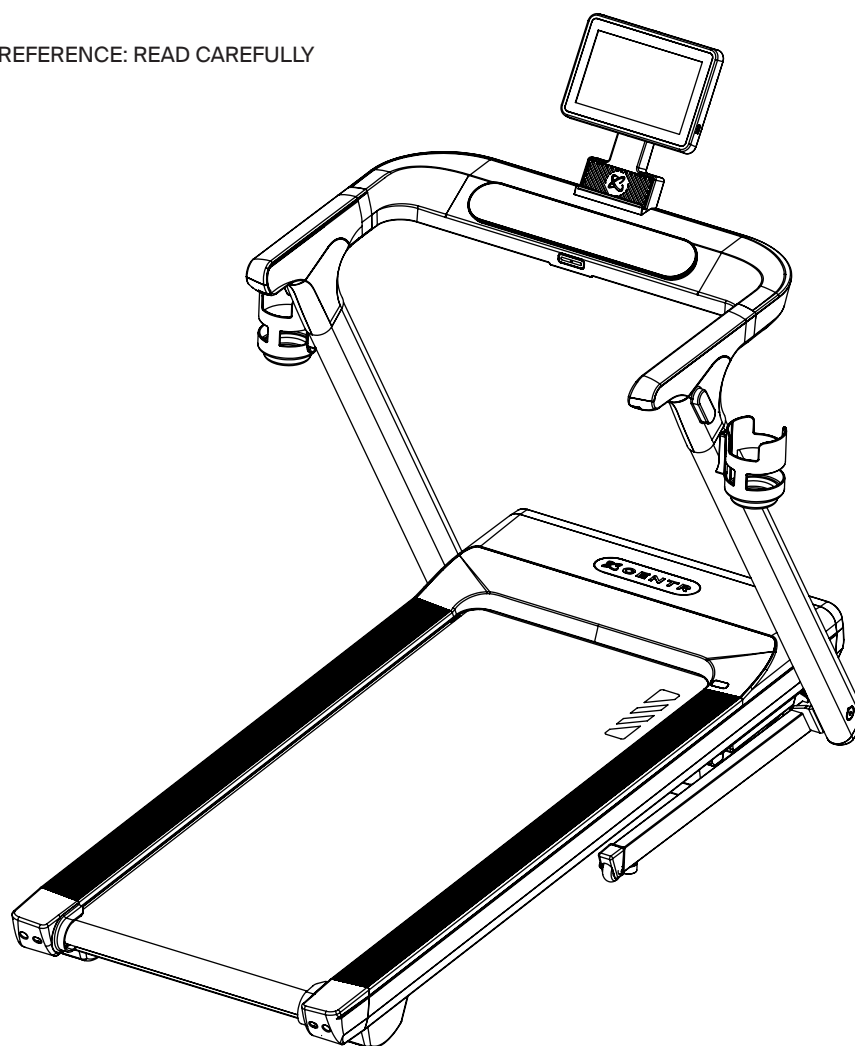


Models: T3S-110.2  
T3S-220.2

## SERVICE MANUAL

# CENTR RUNR-S

IMPORTANT, RETAIN FOR FUTURE REFERENCE: READ CAREFULLY



Manual applies to Serial Numbers and after:

T3S-110.2-9-25-04-002501

T3S-110.2-C2-9-25-05-001014

T3S-220.2-9-25-03-000181

MADE IN CHINA  
80366-EN-V2025-04-28



## TABLE OF CONTENTS

IMPORTANT SAFETY INSTRUCTIONS.....	4
PARTS DIAGRAMS.....	5-6
PARTS LIST.....	7
ELECTRICAL WIRING DIAGRAM (110V MACHINES).....	8
ELECTRICAL PARTS LIST (110V MACHINES).....	9
ELECTRICAL WIRING DIAGRAM (220V MACHINES).....	10
ELECTRICAL PARTS LIST (220V MACHINES).....	11

## IMPORTANT SAFETY INSTRUCTIONS

### DANGER

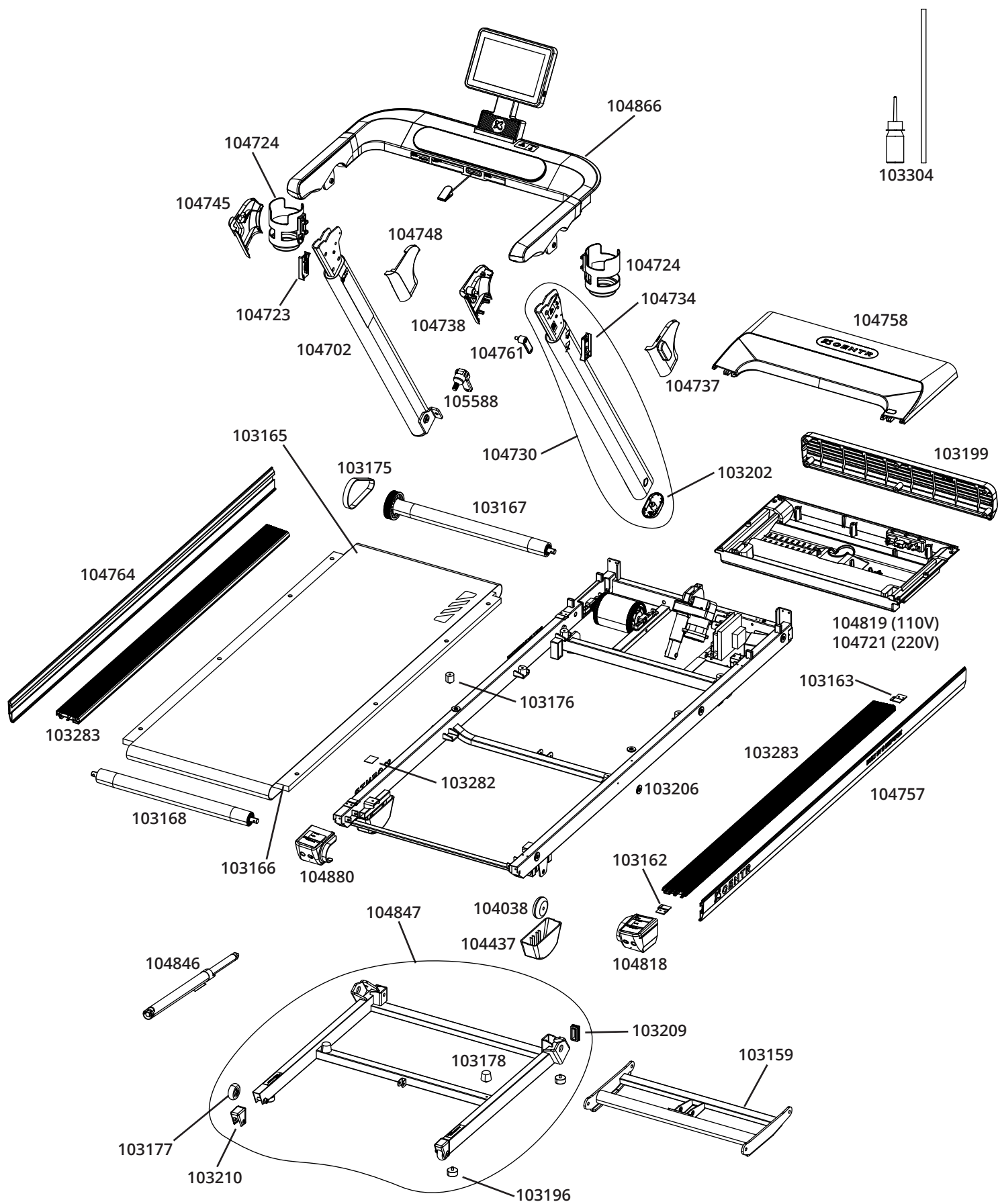


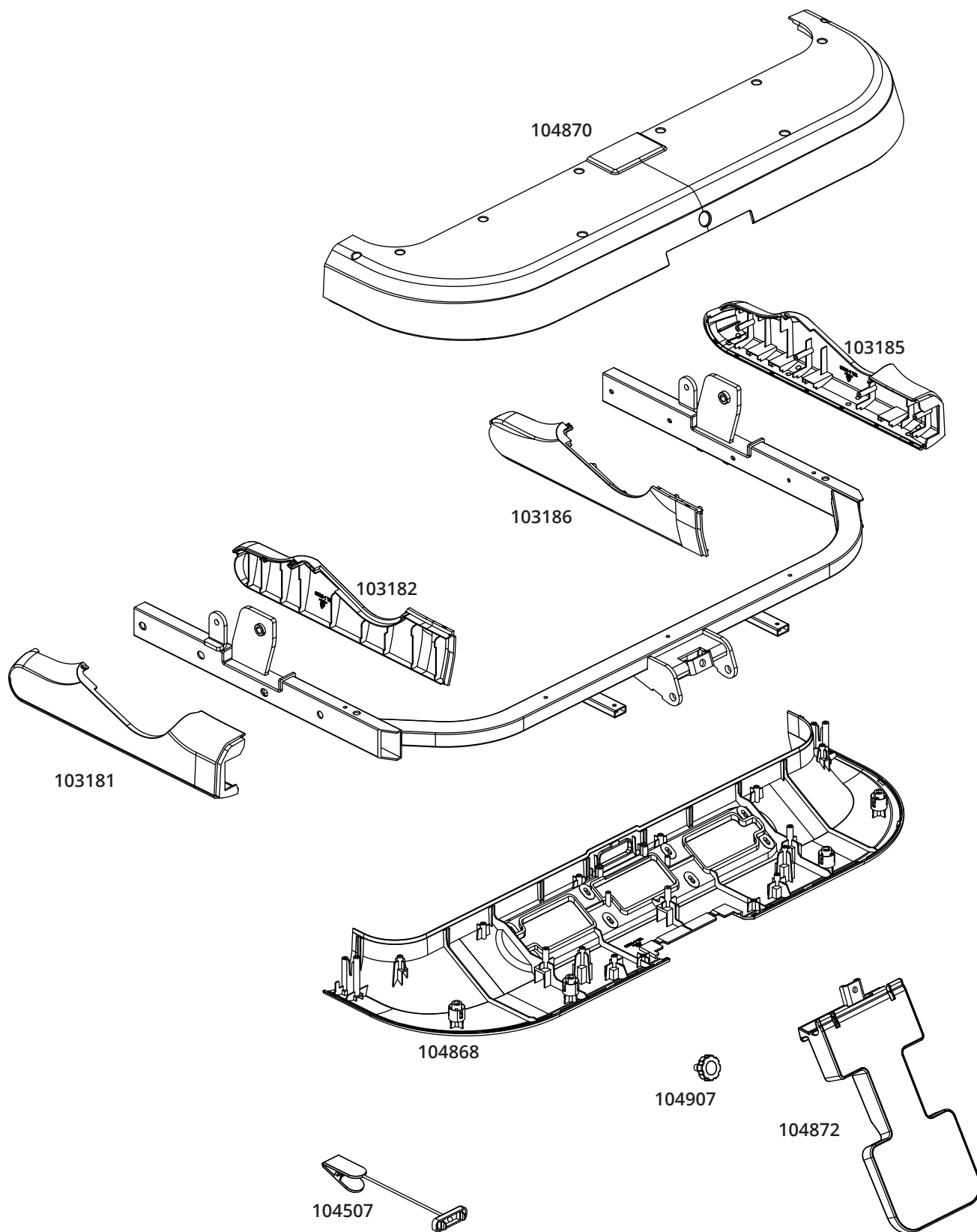
To reduce the risk of electrical shock, disconnect the power cord from the outlet and machine and wait 5 minutes before servicing this product. Any diagnosis or repairs of this product should be done by a trained service technician or an individual who is aware of proper safety procedures. If proper safety procedures are not followed, an electric shock is possible. Store the power cord in a secure location.

### WARNING!

To reduce the risk of burns, fire, electric shock, or injury to persons:

1. Read and understand the Important Safety Instructions before working on the machine. Failure to obey the instructions and safety warnings could cause injury to the service technician or bystanders.
2. Keep bystanders, children and pets away from the product being serviced at all times.
3. Make sure that the repair is done in an appropriate work space away from foot traffic and exposure to bystanders.
4. Be aware that as hardware is removed from parts on this machine, the loose parts may need to be supported or damage to you or the machine may occur. Be sure to be prepared to support the weight of the part before fully removing any hardware when servicing the machine. If necessary, use a second person to assist with supporting the part.
5. Some components of the equipment can be heavy or awkward. Enlist the service of a second person when you do maintenance steps involving these components. Do not try to do heavy or awkward steps on your own.
6. If replacement parts are necessary, use only genuine Centr replacement parts and hardware. Failure to use genuine replacement parts can cause a risk to users, keep the machine from operating correctly and will void the warranty.
7. Be sure that all warning stickers and instructional placards applied to the product are present and in good condition when doing maintenance or replacing components. If at any time the Warning labels become loose, unreadable or dislodged, replace the labels.
8. Do not try to change the design or functionality of the machine being serviced as this can adversely effect user safety and will void the warranty.
9. Do not use the machine until all shrouds, instructions, warning labels and correct functionality have been verified and tested for correct performance.

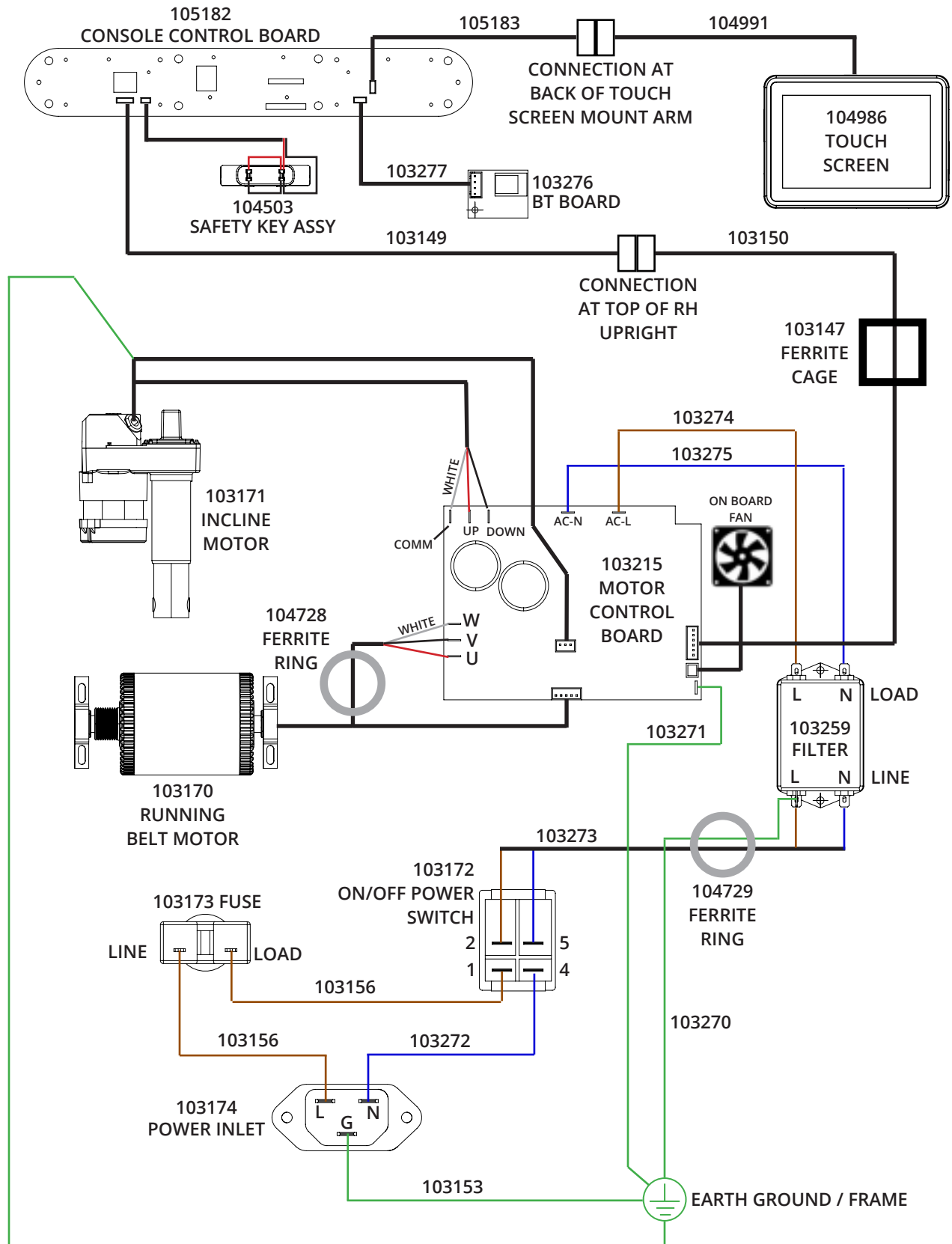




# CENTR

PART NUMBER	DESCRIPTION	QTY.
103159	WLDMT, INCLINE FRAME	1
103162	BRACKET, SIDE PLATFORM, A	2
103163	BRACKET, SIDE PLATFORM, B	2
103165	BELT, RUNNING	1
103166	DECK, RUNNING	1
103167	ROLLER, FRONT, 46 DIA	1
103168	ROLLER, REAR, 46 DIA	1
103175	BELT, J7. 165	1
103176	BUMPER, RUNNING DECK	6
103177	WHEEL, TRANSPORT	2
103178	BUMPER, BASE FRAME	2
103181	COVER, HANDRAIL, OUTER, LH	1
103182	COVER, HANDRAIL, INNER, LH	1
103185	COVER, HANDRAIL, OUTER, RH	1
103186	COVER, HANDRAIL, INNER, RH	1
103196	BUMPER, FOOT	4
103199	COVER, MOTOR FRONT	1
103202	CAP, UPRIGHT BTM	1
103206	WASHER, RAIL MOUNT	10
103209	PLUG, 25 X 50 X 13	2
103210	COVER, TRANSPORT WHEEL	2
103282	FOAM STRIP, 28 X 38 X 1	2
103283	ASSY, SIDE PLATFORM	2
103304	ASSY, TM LUBRICATION, 30mL BOTTLE & NOZZLE	1
104038	RUBBER WHEEL	2
104437	COVER, REAR WHEEL	2
104507	ASSY, REMOVABLE SAFETY KEY	1
104702	ASSY, TOOL-LESS UPRIGHT, LH	1
104723	BRACKET, LARGE HOLDER BASE, LH	1
104724	STANLEY HOLDER CAGE	2
104730	ASSY, TOOL-LESS UPRIGHT, RH	1
104734	BRACKET, LARGE HOLDER BASE, RH	1
104737	COVER, TOOL-LESS UPRIGHT, OUTER, RH	1
104738	COVER, TOOL-LESS UPRIGHT, INNER, RH	1
104745	COVER, TOOL-LESS UPRIGHT, OUTER, LH	1
104748	COVER, TOOL-LESS UPRIGHT, INNER, LH	1
104757	ASSY, SIDE RAIL COVER, RH	1
104758	ASSY, MOTOR COVER, CENTR	1
104761	HANDLE, ADJ CLAMPING, M8 X 1.25	2
104764	ASSY, SIDE RAIL COVER, LH	1
104818	ASSY, COVER, REAR GUARD, RH	1
104819	<b>(FOR 110V MACHINE)</b> ASSY, COVER, MOTOR BTM TRAY, 110V	1
104721	<b>(FOR 220V MACHINE)</b> ASSY, COVER, MOTOR BTM TRAY, 220V	1
104846	AIR CYLINDER, DECK LIFT	1
104847	ASSY, BASE FRAME	1
104866	ASSY, 10" TS AND HANDRAILS	1
104868	ASSY, COVER, CENTER 10" TS CONSOLE, TOP	1
104870	COVER, CENTER 10" TS CONSOLE, BTM	1
104872	ASSY, 10" TS MOUNT ARM	1
104880	ASSY, COVER, REAR GUARD, LH	1
104907	KNOB, TS ARM LOCK	1
105588	HANDLE, ADJ FOLDING, M10 X 1.5	2

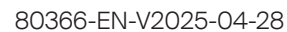
# ELECTRICAL WIRING DIAGRAM (FOR 110V MACHINES)





## ELECTRICAL PARTS LIST (FOR 110V MACHINES)

PART NUMBER	DESCRIPTION	QTY.
103147	FERRITE CORE	1
103149	CABLE, COMM, UPRIGHT-CONSOLE, 700mm	1
103150	CABLE, DATA, LCB-UPRIGHT, 1800mm	1
103153	WIRE, GROUND, GREEN-YELLOW, 16AWG, 100mm	1
103156	WIRE, BROWN, 14AWG, 100mm	2
103170	MOTOR, RUNNING BELT, 1.5HP	1
103171	MOTOR, INCLINE LIFT, 1/15HP, 110V	1
103172	SWITCH, POWER ON/OFF, 16A	1
103173	FUSE, OVERLOAD PROTECTOR, 12A	1
103174	RECEPTACLE, POWER, C14, 16A	1
103215	ASSY, MOTOR CONTROL BOARD	1
103216	CORD, POWER, TYPE B	1
103259	FILTER, YB35D5-15A-Q	1
103270	WIRE, GROUND, GREEN-YELLOW, 16AWG, 600mm	1
103271	WIRE, GROUND, GREEN-YELLOW, 16AWG, 400mm	1
103272	WIRE, BLUE, 14AWG, 150mm	1
103273	CABLE, DOUBLE BRANCH WIRE, 600mm	1
103274	WIRE, BROWN, 14AWG, 300mm	1
103275	WIRE, BLUE, 14AWG, 300mm	1
103276	PCBA, BT	1
103277	CABLE, BT, 200mm	1
104503	ASSY, REMOVABLE SAFETY KEY, FEMALE	1
104728	FERRITE RING, EMI SUPPRESSION, 18 X 33 X 13	1
104729	FERRITE RING, EMI SUPPRESSION, 22.5 X 41 X 17	1
104986	ASSY, 10" TOUCH SCREEN	1
104991	CABLE, TS-MCB, 520mm	1
105182	ASSY, CONSOLE PANEL, EXTERNAL TS CONSOLE	1
105183	CABLE, MCB-TS, 440mm	1



## ELECTRICAL PARTS LIST (FOR 220V MACHINES)

PART NUMBER	DESCRIPTION	QTY.
103147	FERRITE CORE	1
103149	CABLE, COMM, UPRIGHT-CONSOLE, 700mm	1
103150	CABLE, DATA, LCB-UPRIGHT	1
103153	WIRE, GROUND, GREEN-YELLOW, 16AWG, 100mm	1
103156	WIRE, BROWN, 14AWG, 100mm	2
103170	MOTOR, RUNNING BELT, 1.5HP	1
103172	SWITCH, POWER ON/OFF, 16A	1
103174	RECEPTACLE, POWER, C14, 16A	1
103259	FILTER, YB35D5-15A-Q	1
103270	WIRE, GROUND, GREEN-YELLOW, 16AWG, 600mm	1
103271	WIRE, GROUND, GREEN-YELLOW, 16AWG, 400mm	1
103272	WIRE, BLUE, 14AWG, 150mm	1
103273	CABLE, DOUBLE BRANCH WIRE, 600mm	1
103275	WIRE, BLUE, 14AWG, 300mm	1
103276	PCBA, BT	1
103277	CABLE, BT, 200mm	1
103565	CORD, POWER, TYPE E	1
103566	CORD, POWER, TYPE I	1
103567	CORD, POWER, TYPE K	1
103568	CORD, POWER, TYPE G	1
103569	CORD, POWER, TYPE J	1
104503	ASSY, REMOVABLE SAFETY KEY, FEMALE	1
104636	ASSY, MOTOR CONTROL BOARD, 220V	1
104671	INDUCTOR, 2.2kW, PFC-10A-4.0	1
104679	MOTOR, INCLINE LIFT, 1/15HP, 220V	1
104719	FUSE, OVERLOAD PROTECTOR, 8A	1
104728	FERRITE RING, EMI SUPPRESSION, 18 X 33 X 13	1
104729	FERRITE RING, EMI SUPPRESSION, 22.5 X 41 X 17	1
104986	ASSY, 10" TOUCH SCREEN	1
104991	CABLE, TS-MCB, 520mm	1
105182	ASSY, CONSOLE PANEL, EXTERNAL TS CONSOLE	1
105183	CABLE, MCB-TS, 440mm	1

**CENTR**