

DESCRIPTION

The series of AC-DC switching power supplies in a package of 37.5 x 31.0 x 21.0 mm are capable of delivering 10 watts. They are designed for industry control application, AC motor control application.

FEATURES

- Universal input 90-264VAC, 47-63Hz
- -25°C to +80°C operating temperature
- High efficiency
- Fixed output voltage
- Continuous short circuit protection
- Isolation voltage 3750VAC/ 60sec.
- EMI meets EN55032, class B

WATTAGE

Wattage: 10W

DIMENSION

Dimension: 37.5(L) x 31.0(W) x 21.0(H) mm



SAFETY STANDARD APPROVAL

Meet 60950 / 60335-1

ENVIRONMENTAL SPECIFICATION

Operating temperature: -25°C to +80°C

Storage temperature: -25°C to +85°C

SELECTION GUIDE

Part number	Input voltage	Output voltage	Output current @ full load	Efficiency ⁽¹⁾ (typ.)	Capacitive load ⁽²⁾ (max.)
A10-XA04-3.3	90-264 VAC	3.3 VDC	2500 mA	70%	18000μF
A10-XA04-05		5 VDC	2000 mA	76%	4800μF
A10-XA04-12		12 VDC	840 mA	78%	2000μF
A10-XA04-24		24 VDC	420 mA	80%	360μF

1. The efficiency measured at full load at 115Vac/60Hz and 230Vac/50Hz after warm-up.
2. The capacitive load measured at full load at 115Vac/60Hz, Ta=25°C with constant resistive mode.

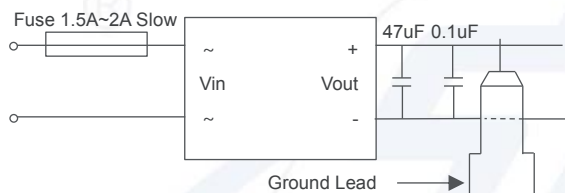
SPECIFICATION

	Parameter	Conditions	Min.	Typ.	Max.	Unit
Input	Input voltage range		90		264	VAC
			130		370	VDC
	Input frequency	90V-264V	47		63	Hz
	Input current	115V			250	mA
		230V			150	mA
	Inrush current	115V			20	A
	(cold start @25°C)	230V			40	A
	No load power consumption	90V-264V			0.1	W
	Start-up time	115V			2	S
	Leakage current	264V/63Hz			0.25	mA
Output	Fuse			External		
	Output voltage accuracy	90V-264V			6	%
	Operating frequency	90V-264V		75		KHz
	Ripple & noise ⁽¹⁾	Vo=5V / 12V Vo=3.3V / 24V			150 180	mVp-p
	Minimum load	90V-264V	0			%
	Line regulation	90V-264V			±1.5	%
	Load regulation	90V-264V (10%~100%)			±2	%
	Hold-up time	115V / 60Hz	8			ms
	Operating temperature	With derating	-25		80	°C
	Storage temperature		-25		85	°C
Environment	Relative Humidity				95	%RH
	Vibration			MIL-STD-202G		
Function	Isolation voltage	1 Minute, Pri to Sec cut-off current: 5mA	3750			VAC
	Isolation capacitance			1100		pF
	Isolation resistance	DC 500V	1			GΩ
	MTBF	115 VAC @25°C	TBD			Hours
	Over load protection			Automatic recovery		
	Short circuit protection			Continuous, Automatic recovery		
	Safety			Meet 60950 / 60335-1		
Physical	Dimension	(L x W x H)		37.5x31.0x21.0 mm		
	Weight			17.0		g
EMC	EMI	EN 55032		Class B		
	ESD	IEC61000-4-2		Criteria A		
	EFT	IEC61000-4-4		Criteria A		
	Surge	IEC61000-4-5		Criteria A		

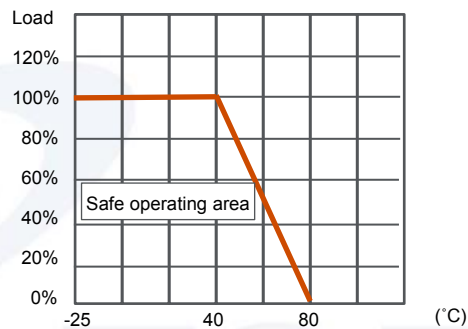
1. Ripple & Noise is test with E-Cap 47μF low ESR and 0.1μF MLCC across outputs at 20MHz bandwidth.
2. All specifications valid at nominal input voltage, full load and 25°C after warm-up time unless otherwise stated.

This content is subject to change, please refer to specification for more detail.
FSP reserve the right to change the content without prior notice.

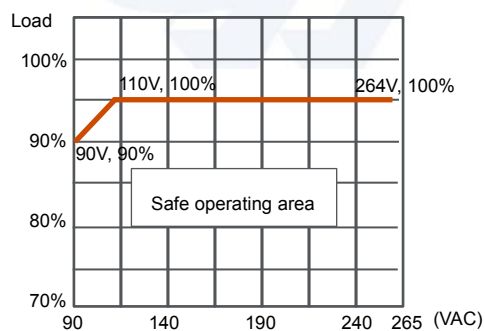
RIPPLE & NOISE



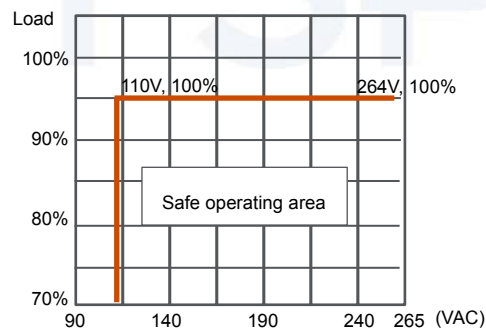
DERATING CURVE (Temperature derating at Nominal voltage)



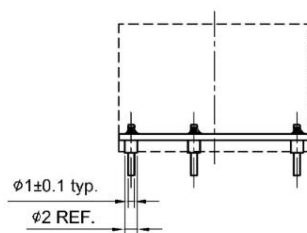
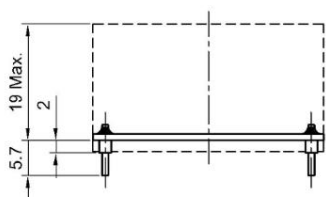
DERATING CURVE (Input voltage derating at Ta= 25°C)



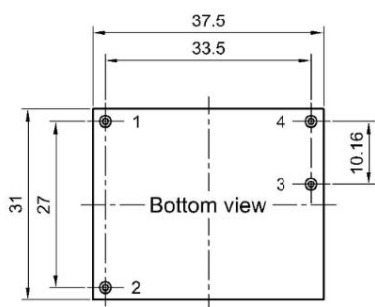
DERATING CURVE (Input voltage derating at Ta= -25°C)



MECHANICAL SPECIFICATION



Pin	Single
1	Vin (L)
2	Vin (N)
3	-Vout
4	+Vout



Projection : Third angle projection
Unit : mm
Tolerance : $\pm 0.5\text{mm}$