

PETKIT™

PETKIT PURA MAX 2

SELF-CLEANING CAT LITTER BOX

QUICK START GUIDE



Put the product
in a place with a
good network

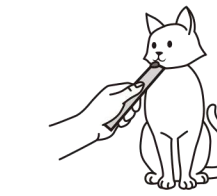
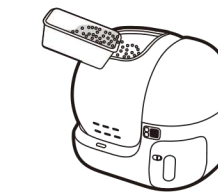
Quick Start Guide



Scan the QR code
to watch the video
of installation
and usage.

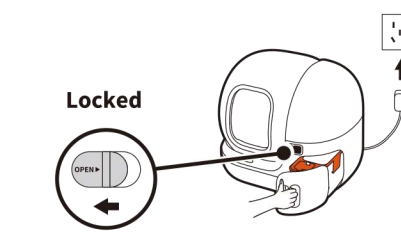
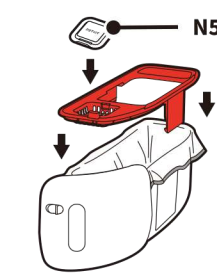
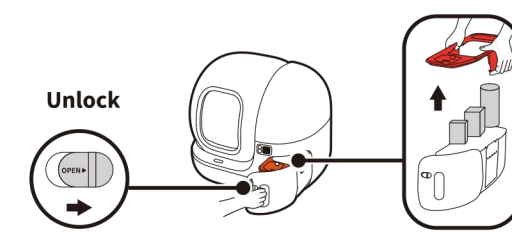
Guide Your Cat to Use

- 1 Add some of your cat's used cat litter into the litter box, and gradually replace it with new cat litter. Appropriately reduce the frequency of cleaning the old cat litter box.
- 2 Place some of your cat's favorite toys next to the device.
- 3 After your cat uses the device, reward him or her with treats.

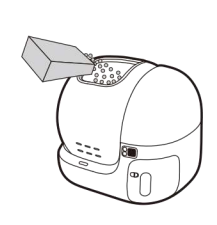
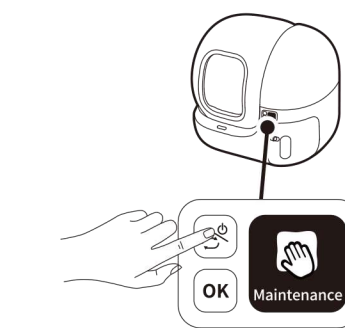


Installation

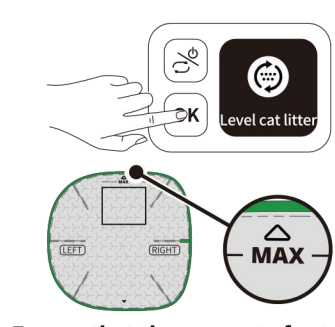
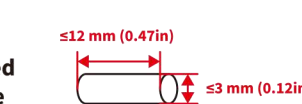
- 1 Open the waste bin to take out all accessories.
- 2 Install the trash bag in the waste bin, ensuring the trash bag is attached to the bottom of the waste bin, and put the orange lid on. Then put the N50 into the lid.
- 3 Install the waste bin, and then connect the power.



- 4 Press to choose "Maintenance Mode", and press to execute this function.
- 5 When the opening of the cylinder faces up, pour in the cat litter. Press to exit "Maintenance Mode".
- 6 Double-click and the device will automatically level the cat litter.



Recommended
cat litter size



Ensure that the amount of cat litter
does not exceed the MAX line.

Cautions



It is prohibited for kittens younger than 6 months to use this device. It is prohibited for cats weighing less than 1.5 kg to use this device.



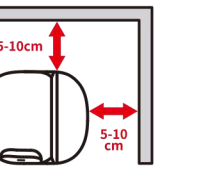
When there is a cat weighing less than 1.5 kg or a pregnant cat in your home, you need to turn on the "kitten mode" in the app, and the device will disable the automatic cleaning and periodic cleaning functions. You need to turn on the cleaning mode through the menu button.



Do not drag or push the device violently to prevent damage to the sensor.



Do not place the machine in a humid space or expose it to direct sunlight. Do not rinse or soak the bottom of the device.



Before use, please remove the tape on the device and place the device on a flat level surface, keeping a distance of 5-10 cm from the wall.

Device Binding

- 1 Download the PETKIT App from the App Store or Google Play. Or scan the QR code to download.
- 2 Open the PETKIT App, click "+" in the upper right corner of the home page, and complete the binding as prompted.
* Before binding, please turn on the Bluetooth of the phone and allow PETKIT to access Bluetooth permissions.

