



3P381857-1C  
M14B114B

Wireless LAN Connecting Adapter  
[BRP072A42]

## Installation Manual

### Website:

◆ For details on specifications, setting methods, and FAQ, see our website.



### URL

<http://www.daikintha.com/dmobile/index.html>

# Safety precautions

◆ The following describes the meanings of pictorial symbols used in this installation manual.

Give this installation manual to the customer when installation is completed.

◆ To conduct a test run of the air conditioner, complete according to the installation manual for the air conditioner unit.



Prohibited



Follow directions.



## Warning

Situations which could result in death or serious injury.

### When installing:



- Request installation by your dealer or a technician.  
(Could cause electric shock or fire.)
- Always use the accessories and specified parts for installation. Be sure to follow the directions in this installation manual.  
(Could cause the unit to fall, electric shock or fire.)
- Electrical work must be performed in accordance with relevant local and national regulations and with the instructions in this installation manual. Always use a dedicated circuit.  
(Could cause electric shock or fire.)
- Always turn off the power supply when installing.  
(Touching the electrical parts could cause an electric shock.)



- Do not allow this product to get wet or use it when bathing or similar activities using water.  
(Could cause electric shock or fire.)
- Do not use this product near medical equipment or persons using cardiac pacemakers or defibrillators. This product may cause life-threatening electromagnetic interference.
- Do not use this product near auto-control equipment such as automatic doors or fire alarm equipment.  
(Could cause accidents due to erroneous equipment behavior.)



- Immediately disconnect the air conditioner power plug if there is abnormal odor or sound, when it is overheating, or smoking.  
(Could cause fire or malfunction.)
  - ◆ Request an inspection by your dealer.
- Disconnect the air conditioner power plug if the product was dropped or the case is damaged.  
(Could cause fire or electric shock.)
  - ◆ Request an inspection by your dealer.

### When using:



- Do not disassemble, modify, or repair.  
(Could cause fire, electric shock or injury.)
- Do not handle this product with wet hands.  
(Could cause electric shock or fire.)



## Caution

Situations which could result in damage or physical injury.

### When installing:



- Do not install where flammable gas leaks can occur.  
(Could cause fire.)



- Grip the connector when disconnecting the connecting cord from the outlet.  
(Otherwise fire or electric shock can occur.)

### When using:

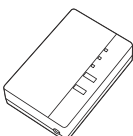
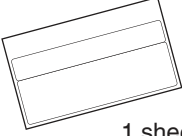
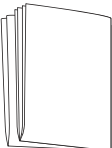
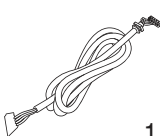
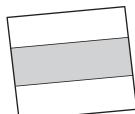



- Do not use where small children can get access.  
(Could cause injuries.)

- Do not use this product near a microwave oven.  
(This can affect Wireless LAN communications.)

# Accessories

Check if the following accessories are included in your package.

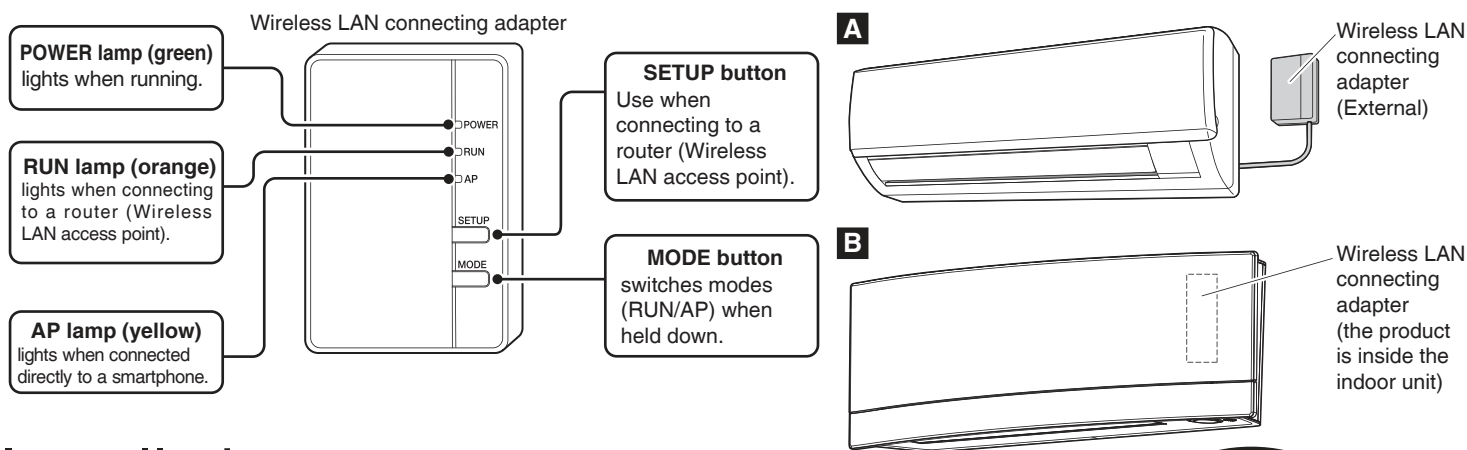
<b>(A)</b> Wireless LAN connecting adapter 	<b>(B)</b> Serial number sticker ※1  1 sheet	<b>(C)</b> Installation manual  1 set (multi-language)	<b>(D)</b> Connection cord (1.6 m) ※2  1 pc	<b>(E)</b> Fastening tape  1 pc	<b>(F)</b> Mounting screw  2 pcs
---	---	---	---	--	---

※1 ◆ Affix to the sticker attachment on the back face of this sheet and keep safe.

※2 ◆ Do not use extension or other cords.

◆ Some models already have this cord installed in the indoor unit.

# Main components



## Installation

### Installation Work

#### 1 Attach the Wireless LAN connecting adapter to indoor unit.



**Danger**  
Always turn off the power supply when installing.  
(Touching the electrical parts could cause an electric shock.)

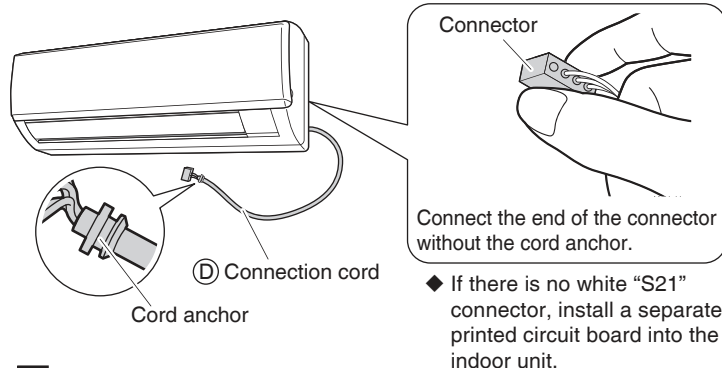
##### ■ In the case of **B**

- ◆ Some models already have the connection cord **D** installed in the indoor unit. In such a case, please proceed from **B**.

##### ■ Attach connection cord **D** to indoor unit.

Remove the front grill of the indoor unit, then connect the connector of connection cord **D** to the white "S21" connector on the electrical wiring box.

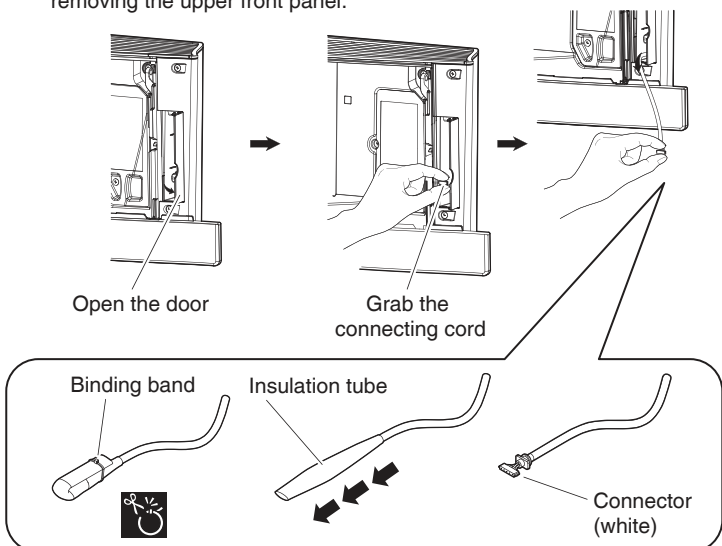
- ◆ For instructions on how to remove the front grill or run the connection cord **D** into place, see the installation manual of the particular air conditioner. (Connection cord **D** can connect to connection cord HA.)



##### **B**

Remove the upper front panel from the indoor unit and open the door, grab the connecting cord with your fingers and pull it out, then remove the binding band and pull the insulation tube off the connecting cord.

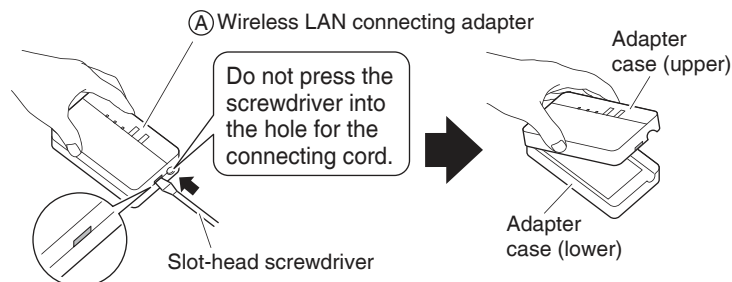
- ◆ Refer to your air conditioner's installation manual for details on removing the upper front panel.



#### 2 Remove the adapter case (upper).

Press a slot-head screwdriver\* into the dent between the upper and lower cases to remove. (Be careful not to damage the case.)

\* Use a slot-head screwdriver with a wide head (5mm or wider is recommended).

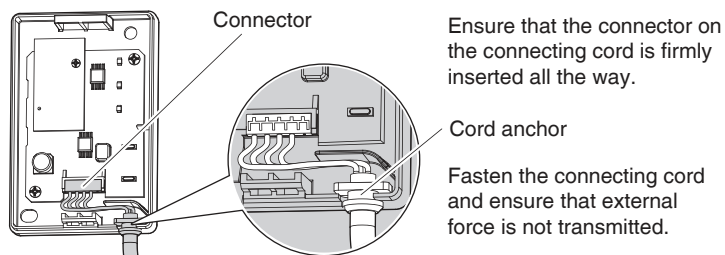


#### 3 Attach connecting cord to the product.

Attach the connecting cord connector (white).

- ◆ Fasten the connecting cord to the notch in the adapter case (lower).

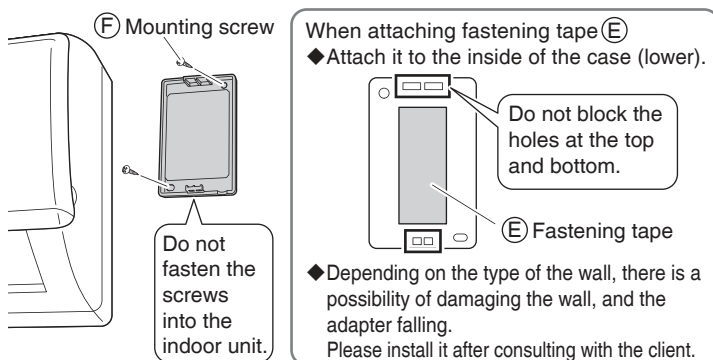
Attach the connector on the side that has the cord anchor.



##### ■ In the case of **A**

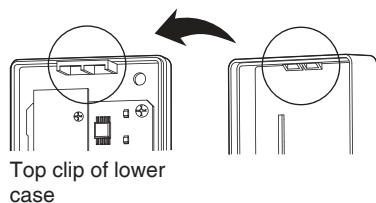
Install the adapter case (lower).

- ◆ Install the adapter case (upper) so as to allow it to be easily removed for maintenance.
- ◆ Do not install outdoors or anywhere it is likely to get wet.
- ◆ Do not install it near the sensor part of the indoor unit.



#### 4 Return the adapter case to its original state.

Close the adapter by hooking the top of the upper case on the top clip of the lower case.



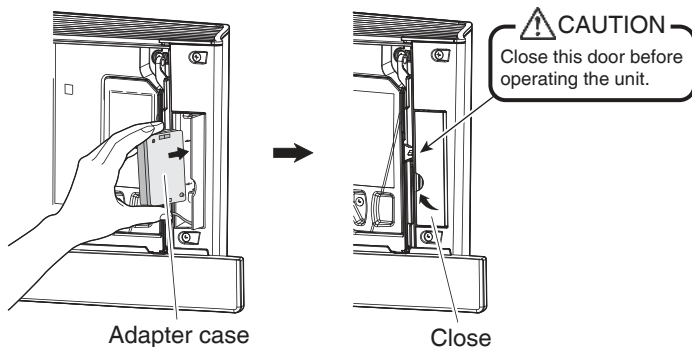
Check that the connecting cord is securely fastened.

Push until you hear a click.

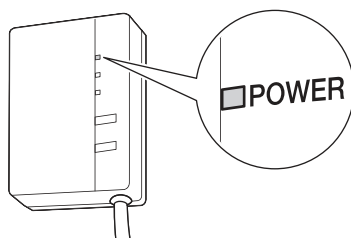
#### 5 Inserting Wireless LAN connecting adapter to indoor unit.

##### ■ In the case of B

Grab the adapter case with your fingers, insert it back into the indoor unit and close the door.



#### 6 Turn on the power supply, wait until the initialization is completed (the lower panel is in the closed position). Open the door, remove the WLAN adapter and check that the [POWER] lamp for the product lights. After checking, return the WLAN adapter into the unit and close the door.



◆ When turning on the power, always attach the adapter case (upper).

## Configuration

Connection  
Settings  
Section

The customer is responsible for preparing the following.

- ☐ Smartphone or tablet PC  
(Refer to our website for the latest information on supported operating systems.)
- ☐ Internet line and communicating device  
(Modem/router or a similar device)
- ☐ Wireless LAN access point  
(The corresponding channel for the Wireless LAN connecting adapter is 1-11.)
- ☐ [DAIKIN Mobile Controller] (Free of charge)

##### Installation method of Online controller

###### For Android Phones/Tablets

- (1) Open the [Google Play].
- (2) Search for [D-Mobile].
- (3) Follow the directions on the screen to install.

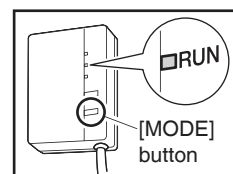
###### For iPhones/iPads

- (1) Open the [App Store].
- (2) Search for [D-Mobile].
- (3) Follow the directions on the screen to install.

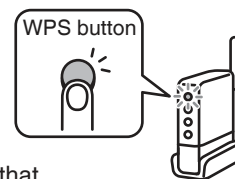
##### Simple Settings

The setup is simple if there is a [WPS] button on the router (Wireless LAN access point).

- 1 Check that the [RUN] lamp is blinking.  
◆ If [AP] is blinking or lit, hold down the [MODE] button on the WLAN adapter for approximately 2 seconds until the [RUN] lamp blinks.



- 2 Hold down the [WPS] button on the router (Wireless LAN access point).  
◆ Operation of the [WPS] differs according to the router (Wireless LAN access point). Please refer to the documentation that comes with your router for more information.



- 3 Hold down the [SETUP] button on the product for approximately 2 seconds.  
◆ The [RUN] lamp on the product blinks more quickly. When the WLAN adapter and the router (Wireless LAN access point) are connected, this lamp lights. If you fail to connect, please try again from step 1 of "Simple Settings". (It may not be possible to make the "Simple Settings", depending on compatibility with the router.)

- 4 Connect the smartphone (or tablet PC) and the router (Wireless LAN access point).  
◆ Connection is possible by for example selecting the SSID of your router (Wireless LAN access point) from "Wi-Fi" in the smartphone's settings and entering the router's password.

- 5 Tap the [D-Mobile] that was installed.  
◆ Follow the directions on the screen to make the settings and for operation.

##### [Note]

- If an upgrade is available for your adapter, the notification icon "📶" will be displayed on the units overview screen. Tap it to upgrade your firmware.



##### [About the SSID and KEY]

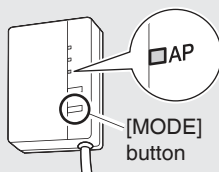
The [SSID] and [KEY] shown on the serial number sticker (B) are necessary when connecting the air conditioner and a smartphone via Wireless LAN.

Affix the serial number sticker (B) here and keep safe.

**Setting Details** If connections cannot be done simply using [WPS], connect using the following method.

- ◆ All steps are demonstrated using iOS.
- ◆ Screens are subject to change. If screens in the installed app differ in appearance from screen illustrations in this installation manual, refer to the website.

- 1** Check that the [AP] lamp is lit (continuously).  
If the [AP] lamp is not lit, hold down the [MODE] button on the adapter for about 2 seconds to prompt the [AP] lamp to light up (continuously). (Lights in about 10 seconds.)



- 2** Connect the smartphone (tablet PC) directly with the adapter via Wireless LAN.
  - ◆ Open the smartphone's Wi-Fi network list, select the [SSID] (DaikinAP \*\*\*\*\*) shown on the serial number sticker (B), or the Wireless LAN connecting adapter (A), and then enter the [KEY].

- 3** Tap the installed app [D-Mobile] to start it.

- 4** Make the wireless connection settings.

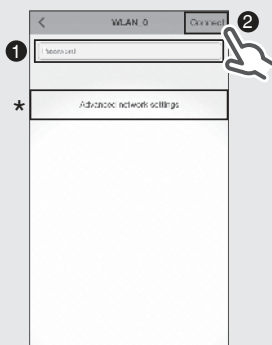
(1) Tap [Configure the wireless connection].



(2) Select your home network from the list.



(3) ① Enter the password.  
② Tap [Connect].



- (4) Follow the on-screen instructions from here onward to complete setup.

- (5) After implementing the setting above and the product and router (Wireless LAN access point) are connected, the [RUN] lamp will light. If this blinks for 1 minute or longer, check the power to the router (Wireless LAN access point), network name and the password and start again from the first procedure.

\* To set the wireless connection manually, tap [Advanced network settings], turn off [Automatic IP address (DHCP)], fill in the required information for the Wi-Fi router, tap [✓] and then tap [Connect] on the wireless connection screen. Follow the on-screen instructions and then continue as in step (5).



- 5** Connect the smartphone (tablet PC) and the router (Wireless LAN access point), and then start [D-Mobile].

◆ Refer to step 4 and step 5 of "Simple Settings".

## Troubleshooting

The following table provides brief descriptions of how to handle problems or uncertainties when you install the product or make connection settings. Check our website for details.

When this happens	Explanation and where to check
None of the lamps light.	→ Check the installation. The product is behaving incorrectly. → Turn off the air conditioner power and restart it.
If you cannot find the system (air conditioner) on the system list screen, the product is not installed correctly.	Product lamp is extinguished. → Check that the RUN lamp is lit. → Check that the power is on. → Make the simple settings or detailed settings again. → Move the router (Wireless LAN access point) closer to the product. → It is possible that you are using a smartphone, access point or wireless router that is not supported. Check our website for details.

This telecommunication equipment is in compliance with NTC requirements.

Complies with  
IDA Standards  
DA103787

35702/SDPPI/2014  
4725

## DAIKIN INDUSTRIES, LTD.

Head office:  
Umeda Center Bldg., 2-4-12, Nakazaki-Nishi,  
Kita-ku, Osaka, 530-8323 Japan

Tokyo office:  
JR Shinagawa East Bldg., 2-18-1, Konan,  
Minato-ku, Tokyo, 108-0075 Japan  
<http://www.daikin.com>

3P381857-1C