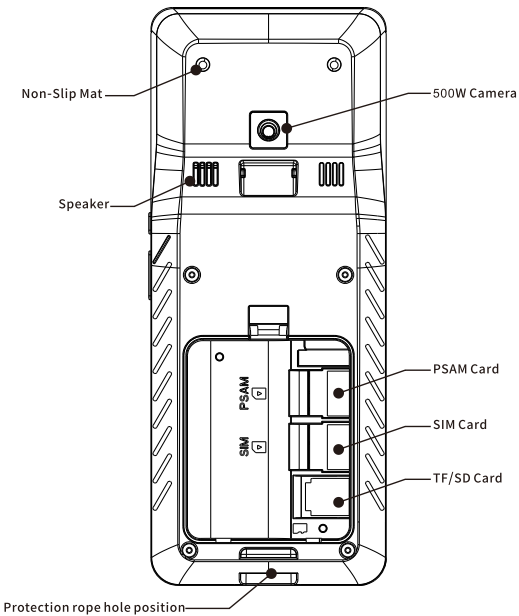
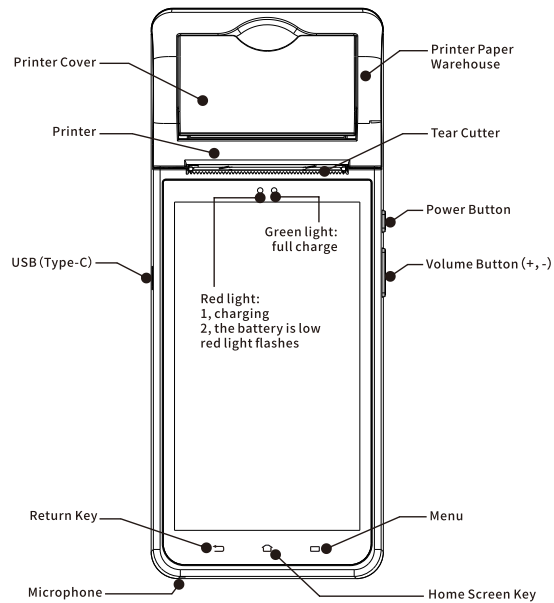
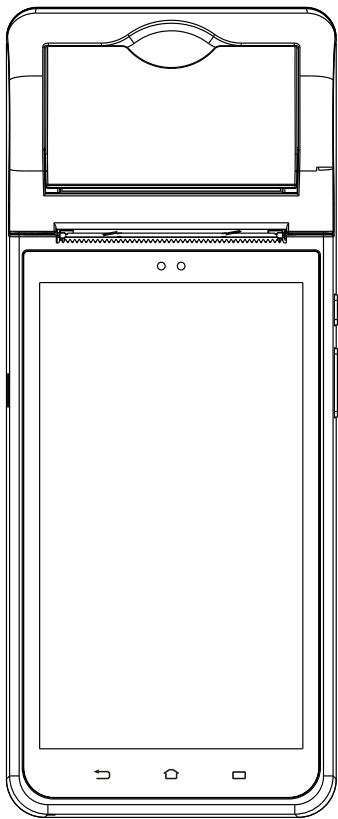


# Handheld POS Terminal



### Power Button:

Short press: Lights up the screen and locks the screen.

Long press: In the off state, long press 3-5 seconds to turn on; in the boot state, press and hold for 3-5 seconds, you can choose to shut down or restart.

In the state of crash or redundancy: long press for more than 10 seconds, automatic shutdown and restart.

### Back Button:

Click to jump back to the previous screen.

### Home Screen Button:

Tap to quickly jump back to the home screen.

### Menu Button:

Click to quickly view the running program, you can select or close the program or application.

### Charging Hole:

USB (Type-C) interface charging. Output 5V/2A to charge the device. When the device is charging, the screen will have a corresponding icon prompt. If there is no prompt, please check if the charger is plugged in. This hole should be protected from liquids or short circuits, and the charging device should be forbidden!

### SIM/ SIM Card:

support SIM card insertion, network support 2G/3G Unicom Netcom, mobile 2G, Note that when the SIM is inserted, please confirm that the device is in the shutdown state to avoid malfunction and unnecessary loss of the machine.

### TF/SD Card:

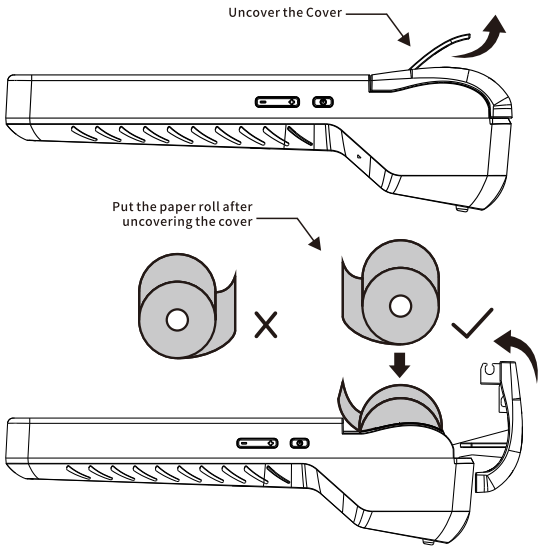
Maximum support for 64G.

### PASM Card:

Support (optional).

### Camera:

5 megapixel fixed-focus camera for scanning code payment and QR code reading. The general distance is about 15cm is the best state.



### Printer:

This device supports 58MM thermal printing paper, the specification is: 57\*43 (paper roll diameter) unit mm. Uncover the paper compartment cover of the printer through the upper cover handle, put the appropriate specifications in the correct direction. Roll the paper out and pull out part of the paper out of the cutter, cover the paper cover and finish the printer loading paper.

### Boot settings:

To activate this device, just a few steps, follow the below settings what similar to the phone settings.

1. 2G/3G setting: In the off state, on the back of the machine, open the battery protection cover, insert the corresponding SIM card, press and hold the power button for 3 seconds to boot, enter the first boot interface and follow the prompts to activate the device.

2. TF/SD card setting: Please turn off the battery protection cover on the back of the machine, and insert the corresponding TF card. Press and hold the power button for 3 seconds to turn it on. It can be used after booting.

3. PASM card: Please turn off the battery protection cover on the back of the machine, and insert the corresponding TF card. Press and hold the power button for 3 seconds to turn it on. It can be used after booting.

4. WIFI settings: Go to the “Settings” menu, then turn on the WLAN, enter the WLAN search interface, select the available WLAN hotspots, and enter the access password.

Common troubleshooting:

Q: The printer does not work:  
A: Check if the paper compartment cover is properly closed, whether the paper protrudes to the paper cutter through the platen roller, check whether the paper product specification is 57\*43, if the paper is normal, the printed white paper, Please check if the paper roll is in the opposite direction.

Q: The camera cannot scan the code:  
A: Please restart the device.

Q: Language setting:  
A: Please go to “Settings” and select “Language and input method” under “System” menu. After selecting “Language”, select the desired language to drag to the first position (if the language is not what you need, you can choose "Add Language" to add).

Product Parameter:	
CPU	Mt6580
Architecture	ARM Cortex-A7 quad core 1.3GHz
System	Android 8.1.0
Memory	8GB ROM + 1GB RAM
Display	5.5" HD,1280X720,IPS
Camera	5 megapixels + Auto focus
WIFI	2.4Ghz,Support IEEE 802.11 a/b/g/n
Communication	Support Unicom 3G/2G, Mobile 2G
Bluetooth	3.0/4.0,Support BLE
MIC	Support
SPK	Support
Printer	Built-in high-speed thermal printer, printing speed greater than 70mm/s, support width of 58mm, outer diameter43mm paper roll
Battery	Removable lithium battery, 3.7V/5000mAh
KEY	Power button (lock screen button) + volume plus / minus button
External Interface	Type-C USB
Barcode recognition	Rear camera scanning, support 1D/2D barcode scanning reading
SIM	Support
TF/SD	Support≤64G
PASM	Support
Wireless	WIFI,GPS,Bluetooth,GSM
Size	211x87x60.5mm
Weight	413g （with battery）

Notes:

Safety warnings and recommendations

- Please insert the AC plug of the charger into the AC socket corresponding to the identification input. It is strictly forbidden to use it in any place where there is any explosive gas. Non-professionals should not open the device and related accessories and charger to avoid damage or danger. This product Radio interference may occur during use. Please take timely and feasible measures for interference. Please do not use it near medical equipment.
- Avoid installation and use in thunderstorms, otherwise there is a danger of electric shock from lightning.
- When you notice excessive heat or smoke and smell an unusual smell, disconnect the power immediately.
- Please pay attention to the tear cutter when changing paper to avoid touching the scratched hand.
- Please put a safety rope when using it to prevent the machine from falling and being damaged.

Disclaimer:

Please refer to the actual product, the right to interpret this document belongs to the company, and the right to modify this manual without prior notice.

Package contents:

- 1 x Machine
- 1 x User Manual
- 1 x Power adapter
- (INPUT: AC 100~240V~50/60Hz 0.5A)
- (OUTPUT: DC 5.0V/2000mA)
- 1 x USB charging cable

Warranty:

- 1.All of our products and accessories are tested by 3 times before ship out.
- 2.Warranty is 12 months, if there is no Man-made problem,we will replace or repair for your freely.

The free warranty is not available in the following cases:

- Unauthorized disassemble and repair the product without permission.
- Product barcode or fragile sticker is damaged and warranty card is altered or defective by user.
- Failure to operate the equipment in accordance with the instructions.
- Man-made damage due to water ingress or falling
- Failure or damage caused by force majeure
- Out of the warranty period

**FCC Caution:** This equipment has been tested and found to comply with the limits for a Class B digital device, pursuant to part 15 of the FCC Rules. These limits are designed to provide reasonable protection against harmful interference in a residential installation. This equipment generates uses and can radiate radio frequency energy and, if not installed and used in accordance with the instructions, may cause harmful interference to radio communications. However, there is no guarantee that interference will not occur in a particular installation. If this equipment does cause harmful interference to radio or television reception, which can be determined by turning the equipment off and on, the user is encouraged to try to correct the interference by one or more of the following measures:

- Reorient or relocate the receiving antenna.
- Increase the separation between the equipment and receiver.
- Connect the equipment into an outlet on a circuit different from that to which the receiver is connected.
- Consult the dealer or an experienced radio/TV technician for help.

Any Changes or modifications not expressly approved by the party responsible for compliance could void the user's authority to operate the equipment.

Max. SAR values for body (0 mm) and simultaneous transmission conditions are 1.415W/kg and 1.564W/kg respectively.