

INSTALLATION INSTRUCTION

LED EMERGENCY LIGHT



INTRODUCTION & WARRANTY

Thank you for selecting and buying V-TAC product. V-TAC will serve you the best. Please read these instructions carefully before starting the installation and keep this manual handy for future reference. If you have any other query, please contact our dealer or local vendor from whom you have purchased the product. They are trained and ready to serve you at the best. The warranty is valid for 3 years from the date of purchase. The warranty does not apply to damage caused by incorrect installation or abnormal wear and tear. The company gives no warranty against damage to any surface due to incorrect removal and installation of the product. This product is warranted for manufacturing defects only.

!WARNING

- Please make sure to turn off the power before starting the installation.
- Installation should only be performed by a certified electrician.
- The light source of this luminaire is not replaceable, when the light source reaches its end of life the whole luminaire should be replaced.
- If the external flexible cable or cord of this luminaire is damaged, it shall be exclusively replaced by the manufacturer or his service agent or a similar qualified person in order to avoid a hazard.
- Make sure the local voltage is the same with the product before plugging into the power supply.
- The unit is designed with replacement battery. Battery replacement should only be performed by a qualified electrician.
- Forbid to use in the rain or outdoors.
- Daily check – check that the status GREEN LED indicator is illuminated
- Do not install this product on damp or newly plastered surfaces.
- Ensure all electrical connections are secure and that there are no loose strands.
- For Indoor Use Only

3
YEARS
WARRANTY *

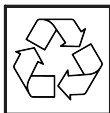




This marking indicates that this product should not be disposed of with other household wastes.



Caution, risk of electric shock.



MULTI-LANGUAGE MANUAL QR CODE

Please scan the QR code to access the manual in multiple languages.

PRODUCT FEATURES

- The product can use in Public place, Hotel, Office Block, House and so on.
- Above the 40°C (104°F) or under the 0°C (32°F), the efficacy of lighting will decline.

MODIFICATIONS

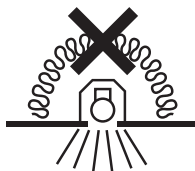
We do not recommend any modification to this product. Any modification may render the product to be unsafe and will invalidate any Safety /Approvals.

TECHNICAL DATA

Model	VT-511S
Watts	3.8W Max
Lumens	110LM
Output Voltage	4.5W
Ouput Power	1.2W
IP Rating	IP20
Viewing Distance	22 Meters
Charging Time	12H
DischargeTime	>4H
Charge Current (mA)	200mA
Discharge Current (mA)	360mA
Safety Classification	II
Product Material	ABS+PC
Battery	3.7V2000mAh Li-ion Battery [REPLACEABLE]
Mode of Operation	Non-Maintained / Maintained
Input Power	AC: 220-240, 50/60Hz
Legends Available	4 Ways Different Legends
Dimension	292x79x102mm
Dimension with Recessed Box	292x93.7x102mm

Emergency Luminaire Designation

X	2	A*C*E	180
---	---	-------	-----

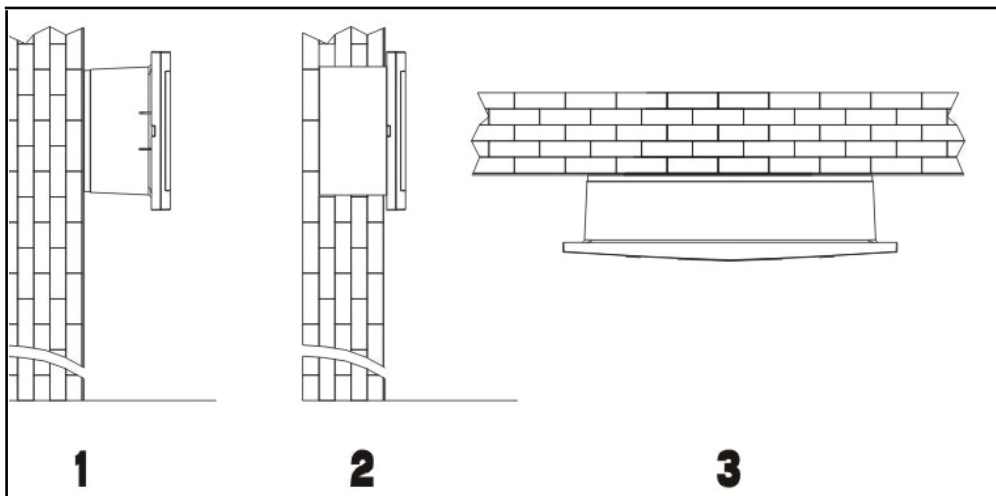


Luminaires not suitable for covering with thermally insulating material.

INSTALLATION INSTRUCTIONS

NOTE: Jumper cap switching position has the functions of AC/DC (Maintained) and DC (non-maintained). P1 is AC/DC position, P2 is DC position. (Refer to Picture F)

THREE INSTALLATION METHODS



WALL MOUNTING

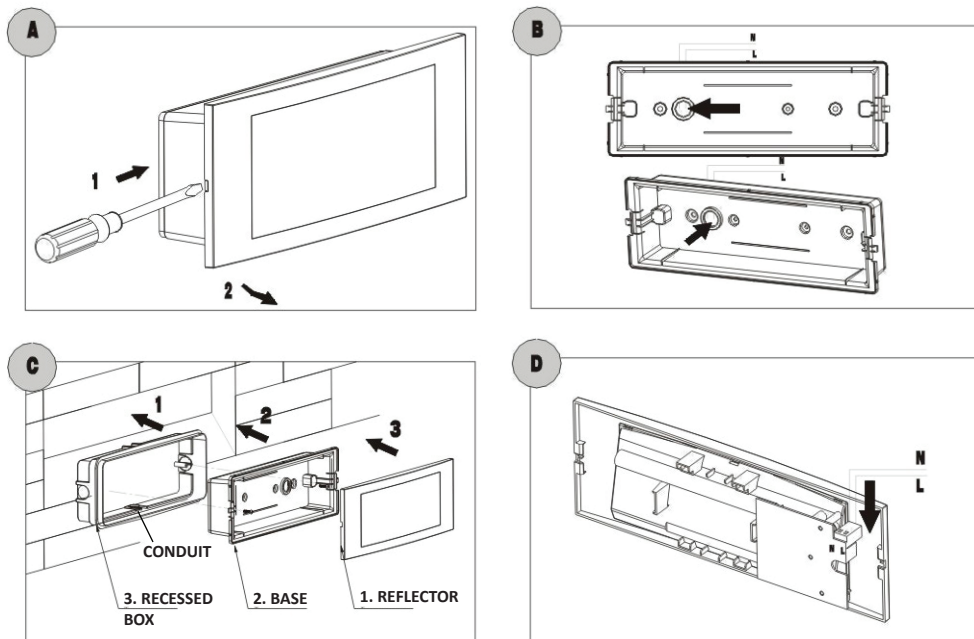
FLUSH MOUNTING

CEILING MOUNTING

I SURFACE MOUNTING (For wall only):

1. Switch off the main power before installation
 2. Open the emergency light with a help of a screwdriver (Figure A).
 3. Insert the Lead wires from the wall through the hole base cover as shown in (Figure B).
 4. Install the base cover on the wall with the help of screws.
 5. For connecting the wires, pull out the connector from the front cover, unscrew the screws on them and connect the lead wires to PCB AC and green terminal.
 6. Put back the connector on the front cover.
 7. Place back the front cover on the base
 8. Switch on the main power
-

RECESSED INSTALLATION METHODS



II RECESSED/FLUSH MOUNTING (For wall only):

1. Switch off the main power before installation
2. Push the conduit of the recessed box with a screwdriver
3. Open the emergency light with a help of a screwdriver (Figure A).
4. Place the Recessed Box on the Wall cutting and Insert the Lead wires from the wall through the Recessed box and base cover hole as shown in (Figure B).
5. For connecting the wires, pull out the connector from the front cover, unscrew the screws on them and connect the lead wires to PCB AC and green terminal.
6. Put back the connector on the front cover.
7. Place back the front cover on the base
8. Switch on the main power

OPERATION

1. If the AC power is normal, the green charging indicator will be ON which shows the lamp is charging.
2. If a power failure occurs, the emergency light senses the AC power failure and automatically switches to emergency mode. The emergency light will illuminate for a minimum of 4 hours. When the AC power is restricted, the emergency light switches the system back to normal mode and resumes battery charging.

MAINTENANCE

Use a small cotton swab with cleaning alcohol to clean the unit, never use strong or volatile chemicals to clean the unit as it will damage the plastic parts.

