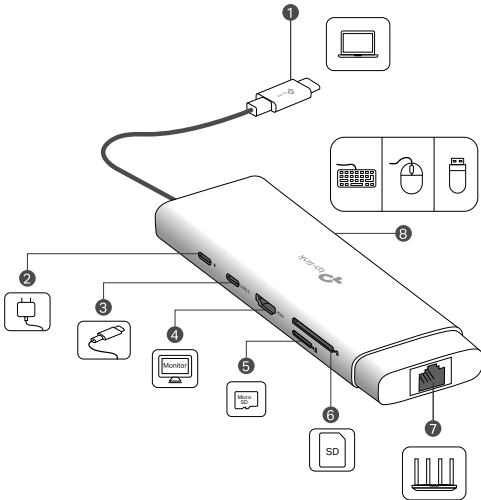


USB Type-C Hub

1 Product Overview



1 USB-C Connector	For connecting to your host device.
2 USB-C PD (Power Delivery) Port*	For unidirectionally charging your host device when connected to a PD charger. PD 3.0; Up to 100W * Does not support data transfer.
3 USB-C Port	USB 3.0; 5 Gbps data transfer
4 HDMI Port	Up to 4K@60Hz (backward compatible)
5 TF (microSD) Card Slot	SD 3.0; UHS-I, 104 MB/s; Supports simultaneously reading and writing two cards
6 SD Card Slot	
7 Gigabit Ethernet Port	For connecting to a wired network provided by a router, modem, etc.
8 USB-A Ports ×3	USB 3.0; 5 Gbps data transfer

Note: The ports' actual performance may vary based on your host device specifications.

Input	PD: 5V/3A, 9V/3A, 12V/3A, 15V/3A, 20V/5A USB-C Connector: 5V/3A
Supported Systems	Windows, Mac OS, iPad OS, iOS, Google Chrome OS, Linux OS, Nintendo OS, Android OS
Plug and Play	USB-C PD port, USB-C port, HDMI port, TF (microSD) card slot, SD card slot, USB-A ports, gigabit Ethernet port.* * The gigabit Ethernet port may require installing a driver for compatibility with certain older operating systems. Please visit our official website at www.tp-link.com to download the necessary driver for these systems: <ul style="list-style-type: none">• Windows 7/8• Mac OS X 10.9 to 10.15

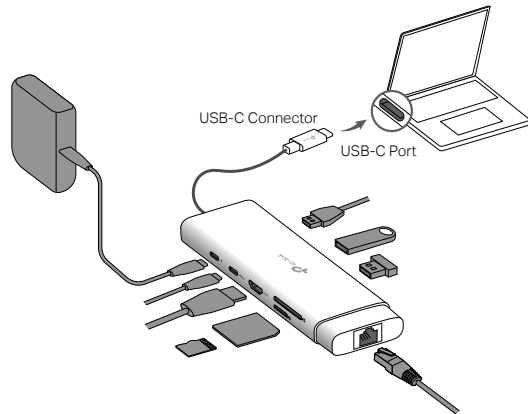
Images are for demonstration only.



2 Using the Hub

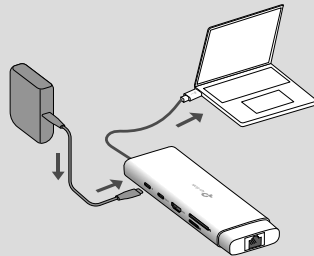
This hub supports the Plug and Play feature. Plug the USB-C connector into your host device, then plug in your external peripheral into the corresponding port of the hub.

Note: A PD charger (not included) is not required. If you wish to use a PD charger to charge your host device, please refer to **Tips (2B)**.



Tips:

1. When not in use, please unplug or remove the external peripherals from the hub first, and then unplug the hub from your host device.
2. If you need to connect a PD charger to the hub's USB-C PD port, please:
 - A) Notice that it only has the charging function and is input only.
 - B) Use an original or certified PD charger to charge your host device. The output of the PD charger should meet the input specifications of the USB-C PD port.



Safety Information

- When the product has a power button, the power button is one of the ways to shut off the product; when there is no power button, the only way to completely shut off power is to disconnect the product or the power adapter from the power source.
- Do not attempt to disassemble, repair, or modify the device. If you need service, please contact us.
- Keep the device away from water, fire, humidity or hot environments.
- This equipment can be powered only by equipments that comply with Power Source Class 2 (PS2) or Limited Power Source (LPS) defined in the standard of IEC 62368-1.

Recycling



This product bears the selective sorting symbol for Waste electrical and electronic equipment (WEEE). This means that this product must be handled pursuant to European directive 2012/19/EU in order to be recycled or dismantled to minimize its impact on the environment.

User has the choice to give his product to a competent recycling organization or to the retailer when he buys a new electrical or electronic equipment.

The terms HDMI, HDMI High-Definition Multimedia Interface, HDMI trade dress and the HDMI Logos are trademarks or registered trademarks of HDMI Licensing Administrator, Inc.

HDMI[®]
HIGH-DEFINITION MULTIMEDIA INTERFACE

TP-Link hereby declares that the device is in compliance with the essential requirements and other relevant provisions of directives 2014/30/EU, 2014/35/EU, 2011/65/EU and (EU)2015/863. The original EU declaration of conformity may be found at <https://www.tp-link.com/en/support/ce/>

TP-Link hereby declares that the device is in compliance with the essential requirements and other relevant provisions of the Electromagnetic Compatibility Regulations 2016 and Electrical Equipment (Safety) Regulations 2016. The original UK declaration of conformity may be found at <https://www.tp-link.com/support/ukca/>



For technical support, replacement services, user guides, and more, please visit <https://www.tp-link.com/support>, or simply scan the QR code.



UK
CA CE EAC