

VELOCI STREET GLIDE PULLBACK PLATE INSTALL GUIDE

DISCLAIMER: Kraus Motor Co. recommends that you defer to a certified mechanic or technician on any installation when possible. Refer to your OEM service manual for procedure, step by step run through, required tools and specifications to make sure all pieces and parts are properly installed. Kraus Motor Co. is not responsible for improper installation of any OEM or Kraus component/kit. After completing installation, go for a slow, careful test ride. Afterward's, double check all pieces, parts and systems. Improper installation may result in severe injury or death.

Before Installation:

- Please note you will lose access to the front phone drawer. You may use a USB Type-C extension cable to relocate the connection to gain access to OEM usb features.

- We strongly recommend ordering OEM PN: **37200592**
(Replacement upper clutch cable)

Torque specs:

- 1) - 55 FT LBS
- 2) - 55 FT LBS

To begin installation:

- (1) Completely remove front fairing.
- (2) Remove clutch and brake master cylinder from bars.
- (3) Remove the handlebars.
NOTE: Ensure all connectors are disconnected.
- (4) Push out OEM Bushings from tree, they will not be reused.
- (5) Remove switches and wires from bars.
- (6) Run wiring into new bars.
- (7) Assemble Risers onto the pullback plate.
See your riser installation schematic for riser torque specs.
- (8) Trim the lower nacelle using the cutting template located on the second page of this document.
- (9) Install lock cover trim piece without screws into lower nacelle, place lower nacelle loose above lock.

NOTE: To remove the nacelle without removing the risers in the future, cut off the tabs from the lock cover and attach it using 3M tape. Alternatively, you can discard the cover for easier removal and reinstallation of the nacelle in the future.

- (10) Bolt your risers to the pullback plate.

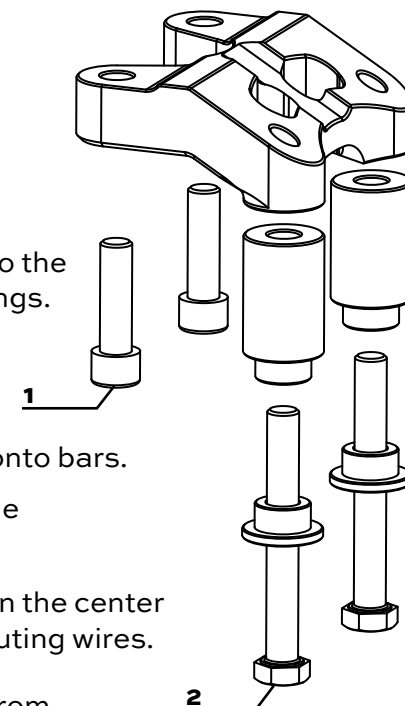
- (11) The assembly can now be installed onto the top tree using the provided solid bushings.
- (12) Install bars onto midsection (if not already installed)
- (13) Install brake master and clutch perch onto bars.
NOTE: Replacement upper clutch cable should be installed at this time.
- (14) Route cables and wiring. The channel in the center of the pullback plate is designed for routing wires.

NOTE: Brake line should be removed from plastic holder on neck for more slack.

NOTE: Threaded holes in the bottom of the plate offer a position for P-clamps to be installed for neater installation of cables.
Threaded holes are 10-24 size.

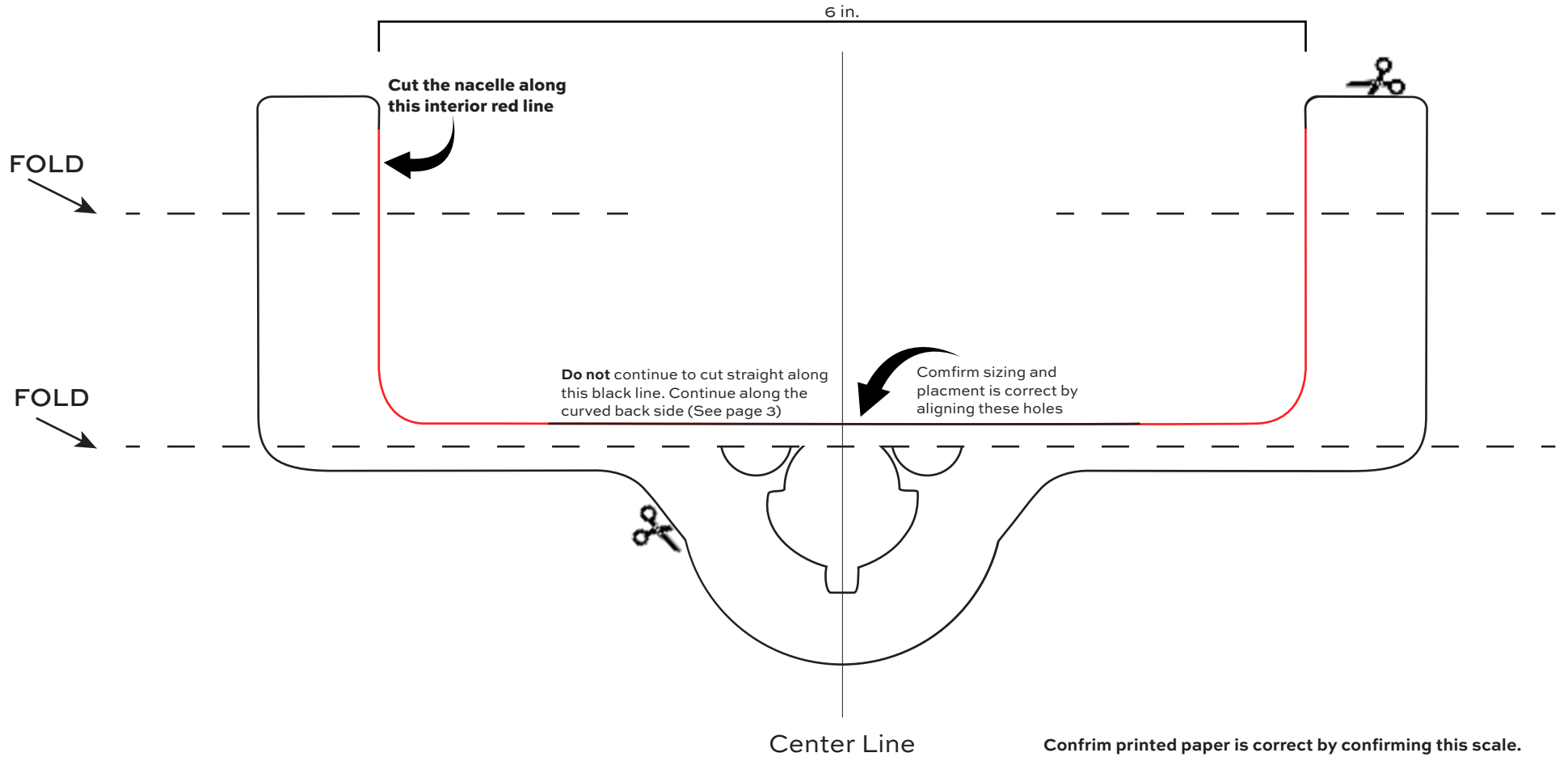
- (15) Inner fairing can be reinstalled. Followed by reassembling the rest of the components.

NOTE: Be mindful of the white tabs that will need to click into the inner fairing. These can be reached through the holes in the side of the fairing where the previous bars were located. The inner fairing can slide over the white clips and the clips can be depressed to click into the main inner fairing. **This may take some finesse.**



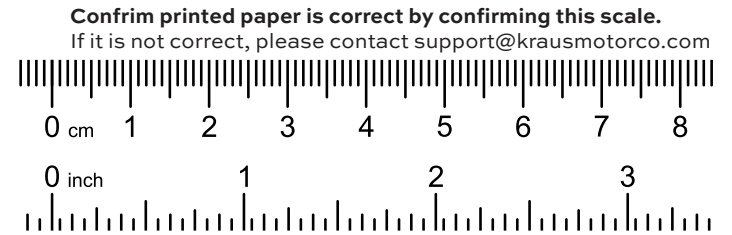
Street Glide Nacelle Cut Template

TECH TIP: Apply tape along the outer folds to ensure a snug fit.



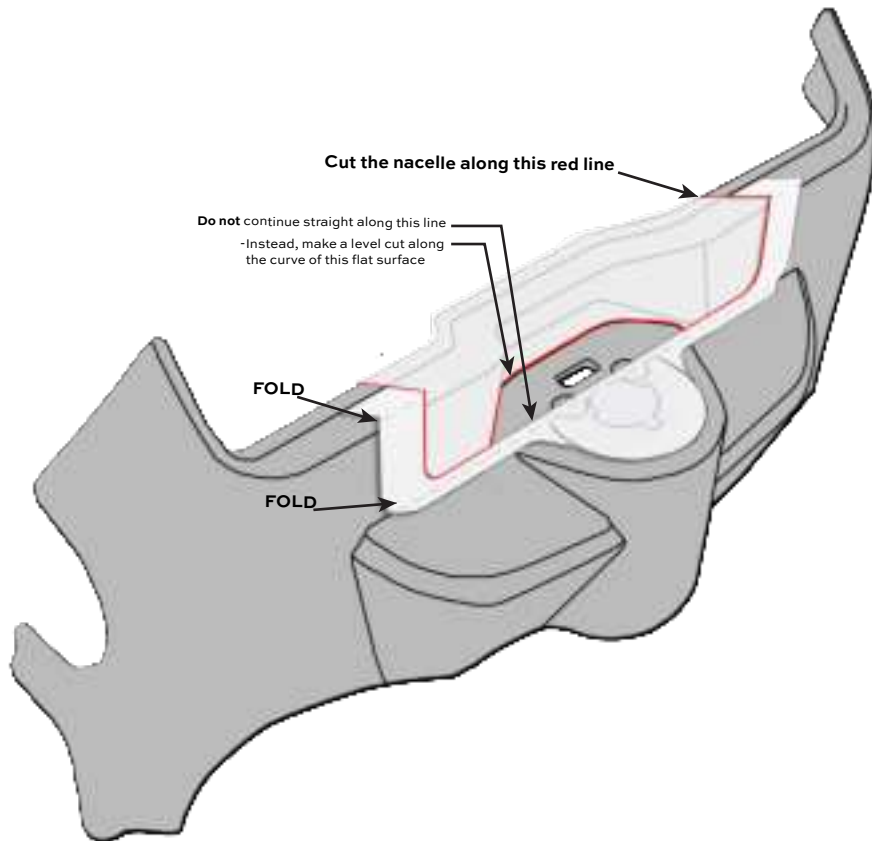
FOLD: - - - - -

CUT: _____



NOTE: Be sure to print in "Actual Scale"

BEFORE



AFTER

