



## **Recycle Disassemble Instruction (Dismantled Information)**

**Requirements according to ANNEX VII of DIRECTIVE 2012/19/EU  
on waste electrical and electronic equipment (WEEE)**

### **Materials and components with hazardous content**

LCDs may contain hazardous substances like Pb and BFRs which are covered by exemptions under the RoHS directive. However, the majority is present in the printed circuit boards assembly. In order to reduce emissions as much as possible, a complete disposal of the old appliance is required. This treatment may only be performed in authorized handling plants.








**Product Name:** LCD Monitor

**Model No.:** EX3203R





## Disassembly Tools

Tool	picture
Philips Screwdriver for M3 Screw	 A Philips screwdriver with a red handle and a silver shaft, lying horizontally on a light brown wooden surface.
Nosed Pliers	 A pair of red-handled nose pliers with long, thin jaws, lying horizontally on a light brown wooden surface.
Diagonal Cutting Pliers	 A pair of red-handled diagonal cutting pliers with short, thick jaws, lying horizontally on a light brown wooden surface.
Slotted screwdriver	 A slotted screwdriver with a green handle and a silver shaft, lying horizontally on a light brown wooden surface.
Six Point Sockets	 A six-point socket screwdriver with a yellow handle and a silver shaft, lying horizontally on a light brown wooden surface.
Philips Screwdriver for M2.5 Screw	 A Philips screwdriver with a red handle and a silver shaft, lying horizontally on a light brown wooden surface.
Knife	 A folding knife with a silver handle and a black blade, lying horizontally on a light brown wooden surface.



## Disassembly process

### 1) Remove the stand base assy

Gently hold the stand base assy to place the monitor on the cushion.

**Note:** Be careful, the panel is easy to break. The hand cannot touch the edge of panel within 15 mm of the top, left, right site of the panel.



**NOTE:** The model using the curved surface screen; There must be put soft mat above of the work station and don't push hard on the machine to avoid cause screen to crack.

Option 2: Use the bottom cushion of EX3203R

Cut off from the red line, and it will fit better for disassembly.



Remove the Cover, COVER HINGE and then remove the screws to remove the stand base assy.





## 2) Remove the rear cover

Use straight screwdriver to insert the removable hole as below and upward force gently to separate the cover clip.

**Note: Be careful, the DECO\_REAR\_COVER is easy to break.**







Use disassembly tool to open all the latches along the edge of the DECO Rear Cover and disconnect the connector.  
**Note: Be careful, the rear cover CLIP is easy to break and the key board is on the bottom of DECO\_REAR\_COVER.**

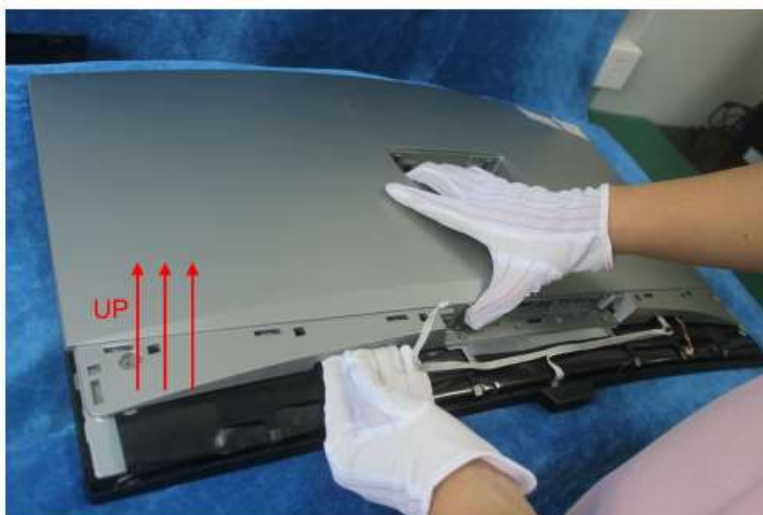


Unscrew the screws to remove the key board from the deco rear cover.





Unscrew the screws, use fingers to insert the hole as below and upward force to remove the rear cover.  
**Note: Be careful, the rear cover CLIP is easy to break.**





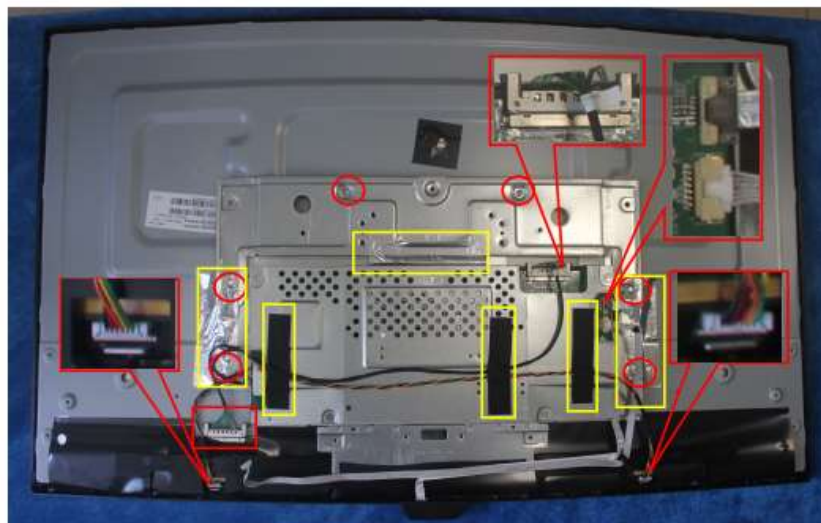
**Note:** The positions of the clips on the rear cover are as follow. There are some small gaps between CLIPS.



**3) Remove the BKT Hinge and main frame from the panel.**

Remove the screws and tapes; pull out the wire marked in red circles to remove the mainframe.

**Note:** When you assembled the LCD, you must tidy the wire as follow picture.



**4) Remove the boards from the main frame**

Unscrew the screws marked in red to remove the main board from the mainframe.







5) Separated the deco bezel.

Use two hands to gently pull down the middle frame to remove the middle frame from the panel.

**Note: Be careful, the panel is easy to break. The hand cannot touch the edge of panel within 15 mm of the top, left, right site of the panel.**





Remove the LENS IR and unscrew the screw to remove the LIGHT SENSOR BOARD from the middle frame.





## **Disassembly Time**

Total time: 30 minutes