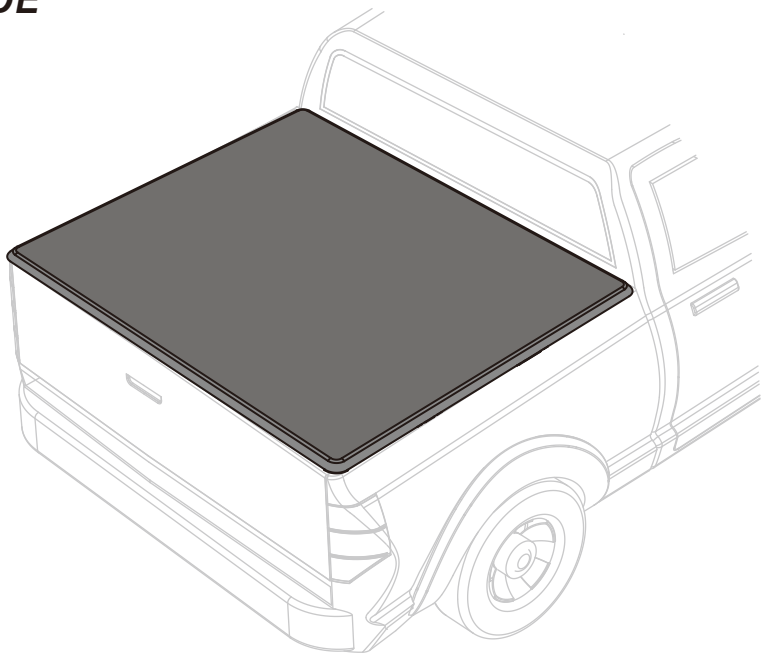
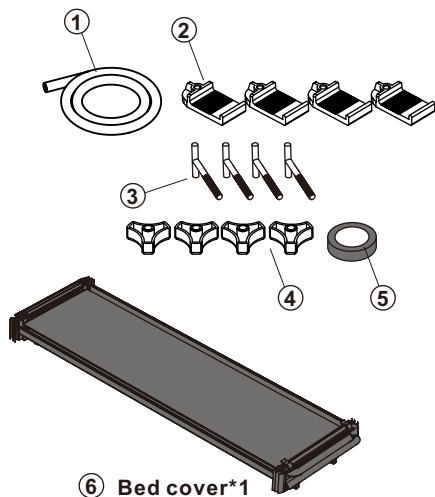







SOFT FOLDING TONNEAU COVER

INSTALLATION GUIDE



PARTS LIST



ITEM		DESCRIPTION	QTY.
1		Seal strip 118(in)	1
2		Front clamps	4
3		T-bar	4
4		Triangle screw	4
5		Light	1

- 1.** • Clean truck bed thoroughly before installation.
• Stick the supplied front seal strip on the front bed rail by aligning with the outer edge.

• Install the provided LED lamps according to the actual situation of the truck bed.

You might need:



Seal Strip

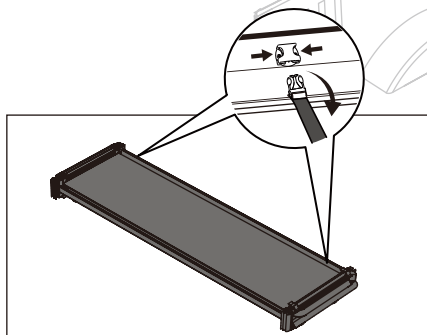
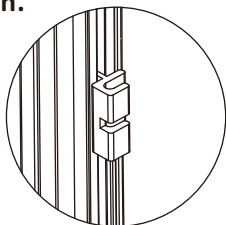
(Only apply to some models)



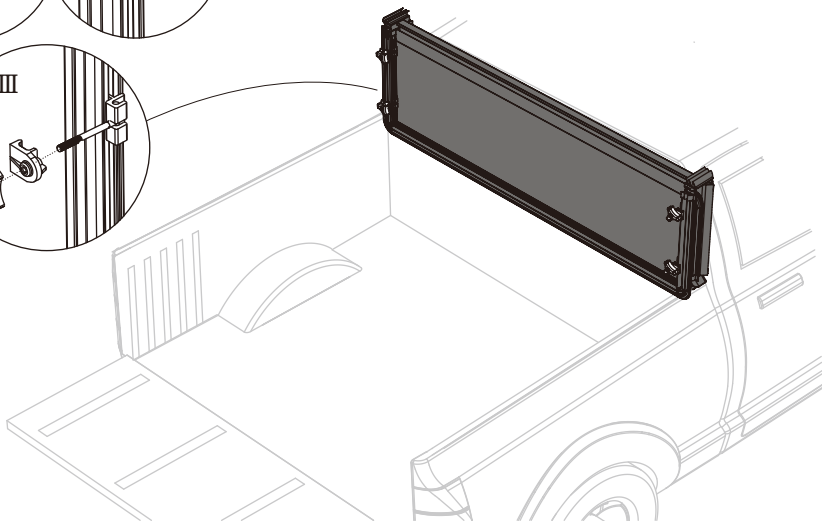
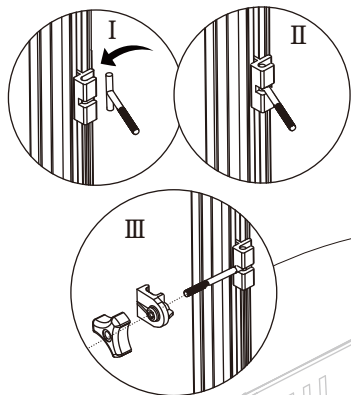
ATTENTION!

- IF THE TRUCK'S FRONT BED RAIL IS LOWER THAN THE SIDES, USE THE PROVIDED WEATHER SEAL STRIPS. GAPS ON THE FRONT BED AND TAILGATE WILL CAUSE NOISE AND FLAPPING ISSUES WHILE THE VEHICLE IS IN MOTION!

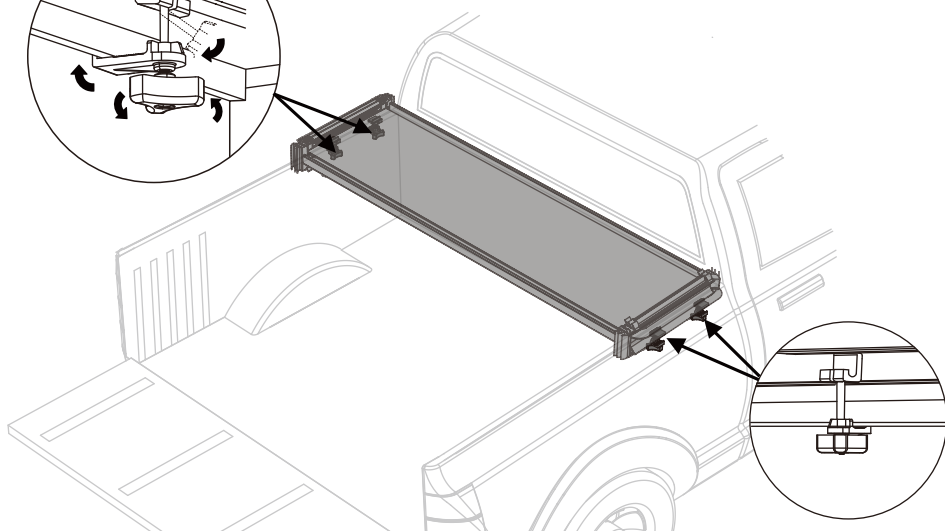
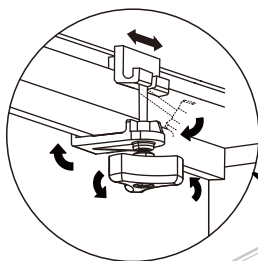
- 2.** • Slide the two aluminum blocks at the front end to the most suitable position.



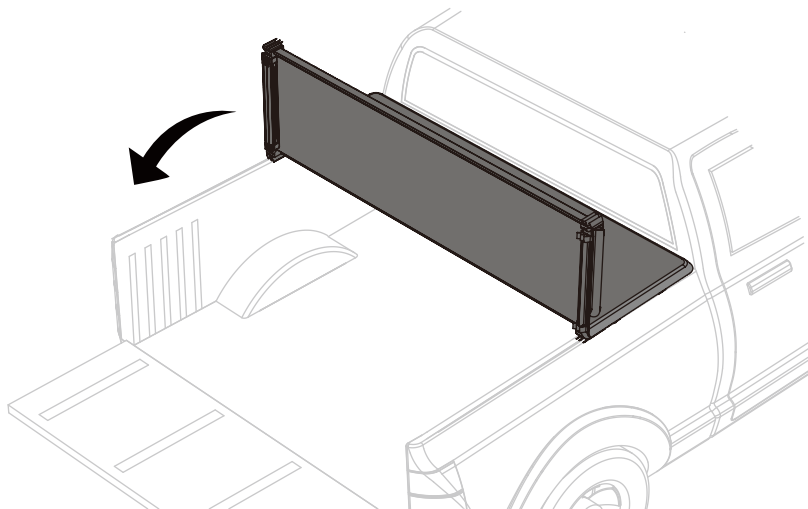
- 3.** • Clamp the T-bar on the aluminum slider of the first fold, use Front clamps and Triangle screw to install it on the T-bar to complete the first fold.



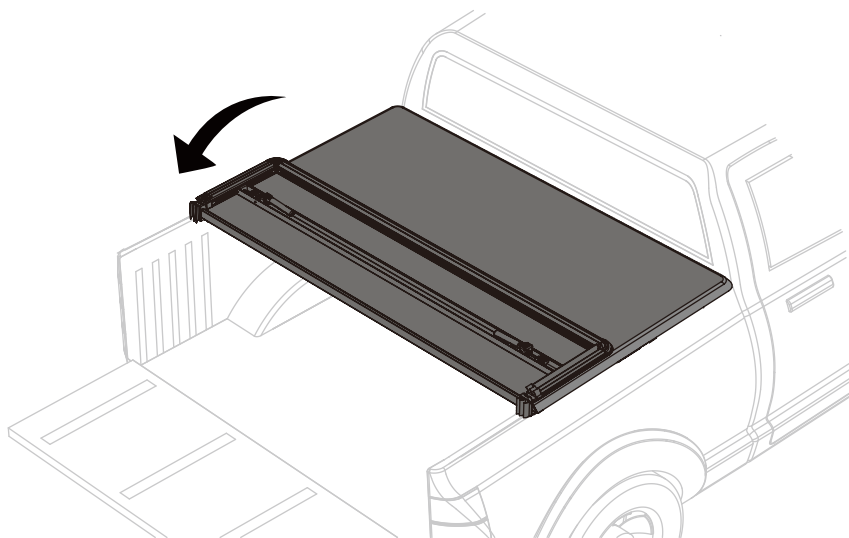
- 4.** • Slide the front clamp to the best position, clamp the interface under the metal bed rail, and then use the Triangle screw to rotate into the metal rod to fix the entire clamp



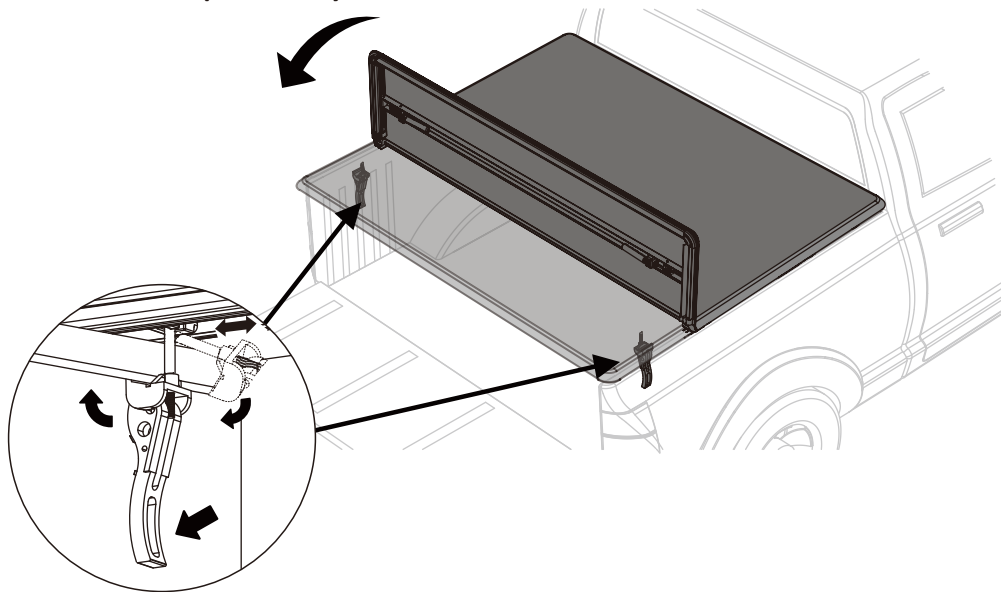
5.



- 6.** • Open the bungee cord at the front end, fully unfold cover towards the tailgate and ensure cover aligns on all sides



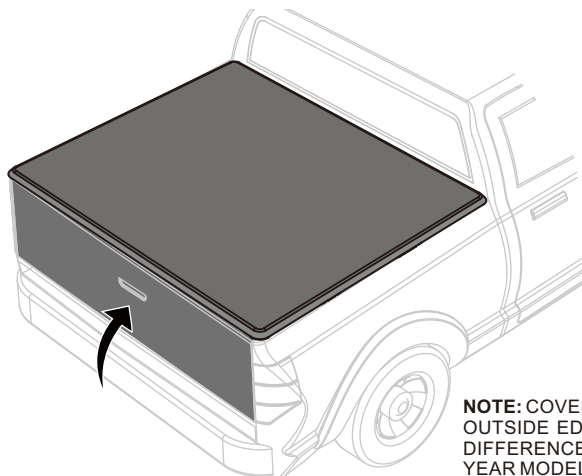
- 7.** • Adjust the connection position of the rear clamp and T-bar according to the actual situation, open the cover and place it on the lathe, and push the rear clamp vertically to fix it to the rails on both sides of the lathe.



8. FINISH THE INSTALLATION

- After rear clamps have been latched securely, close/lock tailgate and cover cannot be opened from the outside

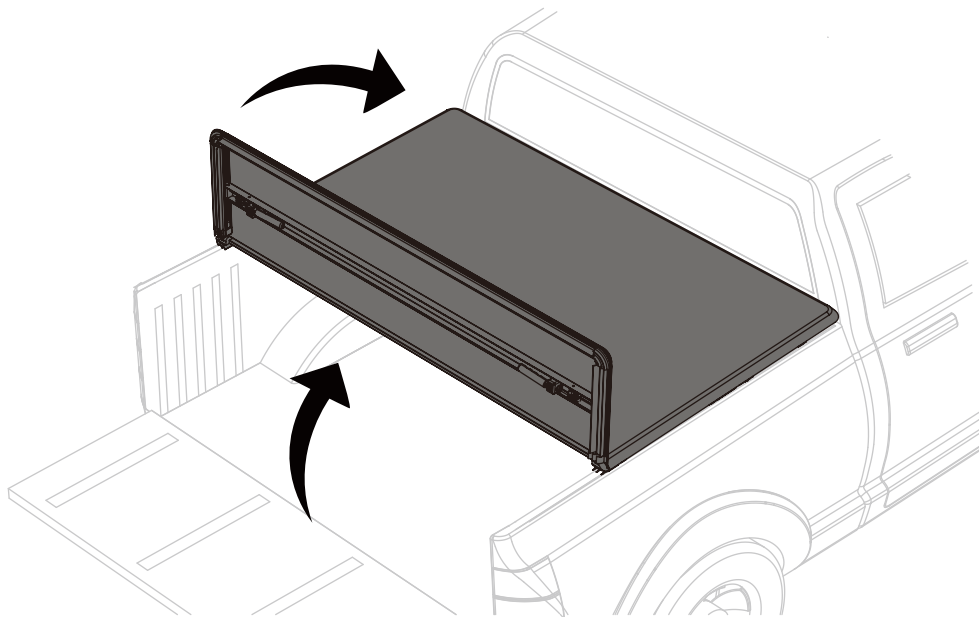
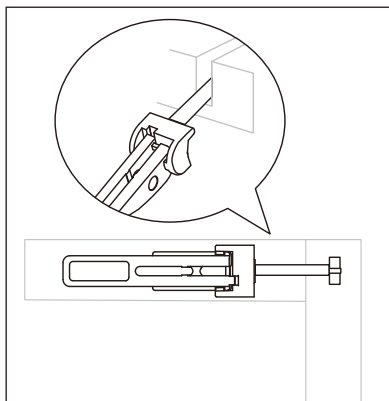
COMPLETED!!!



All clamps must be firmly in contact with the lip of the metal bed rail to ensure a firm cover. Finally, close the tailgate to complete the installation.

NOTE: COVER MAY NOT COMPLETELY COVER TO THE OUTSIDE EDGE OF THE BED RAILS DUE TO SLIGHT DIFFERENCE IN TRUCK BED SHAPE FOR DIFFERENT YEAR MODELS

- 9** When it is necessary to completely fold the cover, place the rear clamps correctly clamping rubber block, and then fold it.



SPECIAL INSTRUCTIONS FOR ALTERNATIVE BRACKETS SUPPLEMENT TO INSTALLATION INSTRUCTIONS (Only for models with system track)

