



RJTTED01, Tabletop Drum Kit with Bluetooth

User Guide

Please read this user guide first before operating the unit and save it for future reference.

Congratulations on your purchase of this RockJam Tabletop Drum kit. To get the most from your purchase, please take a few minutes to read these instructions.

1. Safety instructions

- This product should not be exposed to water by dripping or splashing and no objects filled with liquids, such as vases, should be placed near to the product. Do not place the unit on a wet surface.
- Do not expose the product to temperatures above 35°C and keep it out of direct sunlight.
- This product has no user-serviceable parts. Do not attempt to repair this product yourself. Only qualified service personnel should perform servicing.
- Do not subject the plastic part of the product to harsh impacts. Do not drop the product as this may result in damage.
- Disconnect the product from the power source before cleaning. Never handle the USB cable with wet hands as this could cause electric shock. Unplug the product when it will be unused for long periods of time.
- This product is designed for indoor use only.
- If the USB cable or power adapter needs to be replaced, ensure that the replacement complies with the manufacturer's specifications.

2. Battery Information

Do not dismantle, open or shred secondary cells or batteries.
Do not expose cells or batteries to heat or fire. Avoid storage in direct sunlight.
Keep batteries out of the reach of children.
Battery usage by children should be supervised. Especially keep small batteries out of reach of small children.
Seek medical advice immediately if a cell or a battery has been swallowed.

3. Preparation for use

Unpack the drum kit carefully. We recommend that you save the box and packing materials in case you wish to store the drum kit. Before setting up the unit, verify that the following accessories are present:

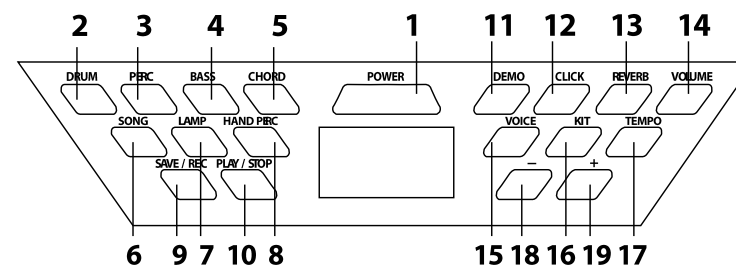
CONTENTS:

- 1 x RJTTED01 Drum kit with 7 Pads
- 2 x Pedals
- 2 x Drum sticks
- 1 x 9V DC Power Adapter
- 1 x USB Data cable
- 1 x 3.5mm AUX input cable
- 1 x Printed user guide

4. Power source

Unwind the DC power adapter cable to its full length; connect one end to the 9V DC input on the rear of the drum kit. Plug the DC power adapter into a 110 - 240V power socket and switch on.

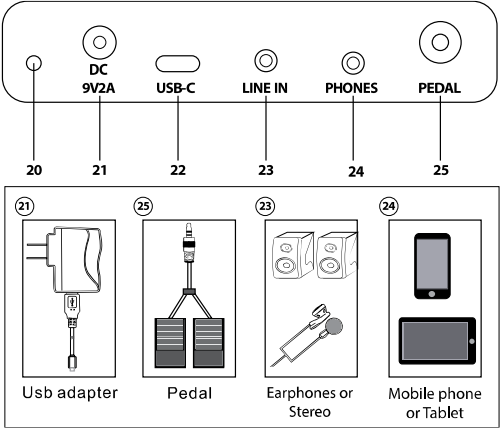
5. Location of controls and indicators



1 – POWER: Press to switch the drum kit on or off.	11 – DEMO: Press to start/stop the DEMO song. Cycle between the 30 demo songs available using the + and - buttons.
2 – DRUM: Drum track button. Used to turn the drum track on/off in Demo mode .	12 – CLICK: Press to start/stop the metronome.
3 – PERC: Percussion track button. Used to turn the percussion track on/off in Demo mode.	13- REVERB: Press to select the reverb level.
4 – BASS: Bass track button. Used to turn the bass track on/off in Demo mode.	14 –VOLUME: Press to enter output volume adjustment.
5 – CHORD: Chord track button. Used to turn the chord track on/off in Demo mode.	15 – VOICE: Press to enter output voice adjustment.
6 – SONG: Press before selecting Drum, Percussion, Bass and Chord tracks during DEMO Song playback.	16 – KIT: Press to enter drum kit selection. 16 drum kits are available.
7 – LAMP: Lamp button. Used to turn the LED at the front of each drum on/off.	17 – TEMPO: Press to enter tempo selection. Tempo can be set between 30 and 250 BPM.
8 – HAND PERC: Press to enter hand percussion mode. Drum kit number 15 will be selected.	18 – DECREASE - : Press to decrease the value of the selected feature.
9 – SAVE/REC: Press to start and stop the recording of the drum beats.	19 – INCREASE + : Press to increase the value of the selected feature.
10 – PLAY/STOP: Press to start or stop the playback of the recorded beats.	

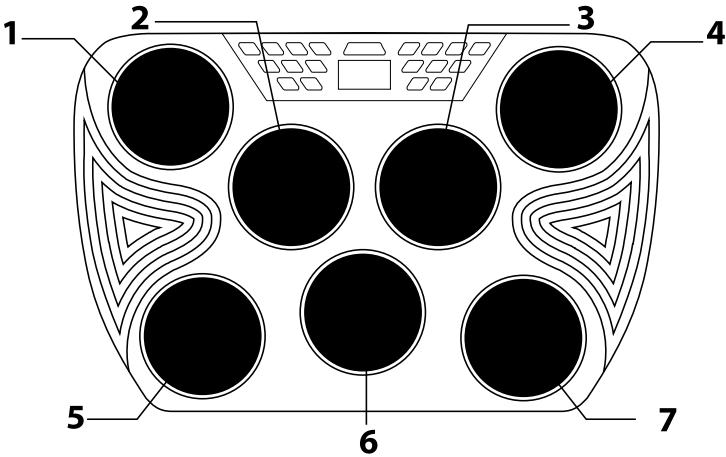
6. Rear panel switches and connections

Make connections to the rear of the drum kit as follows before switching on:



20 – Power indicator: Lights up red to indicate power connected and charging. Light goes out when fully charged. Light flashes when battery is low.	23 – Auxiliary Line input for iPod, iPhone, Smartphone or MP3 player: Use the 3.5mm cable supplied to connect the external device.
21 – Power adapter connection: Use the DC power adapter supplied (9V DC @ 2.5A).	24 – Phones connection: Connect Headphones, Earphones or to amplified speakers.
22 – USB-C connection: Used for MIDI connection to host computer	25 – Pedal Input: Connect pedals for Bass Drum and Hi-hat.

7. Drum pad layout



1 – Crash Cymbal	5 – Snare
2 – High Tom	6 – Open/Close Hi-hat
3 – Mid Tom	7 – Low Tom
4 – Ride Cymbal	

8. Operation

Switching the unit on

Press **and hold** the POWER button located in the middle of the control unit to switch on. All the buttons on the drum kit will light up as a test. The unit will enter Bluetooth mode and connect to the previously connected device if available.

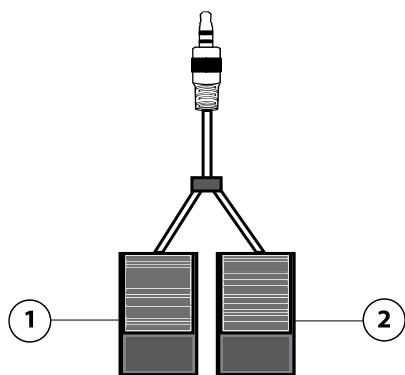
Volume control

Press the VOLUME button to enter volume selection mode. Press the + or – buttons to adjust the volume between 0 (OFF) and 15. Press and hold the + or – buttons to cycle through quickly. The default setting at power up is level 10.

Drum kit selection

Press the KIT button to enter drum kit selection mode. Cycle through the 16 different drum kits using the + or - buttons. Press and hold the + or – buttons to cycle through quickly. Hit the drums to test out the sounds available until you find the kit that you like. The default setting at power up is KIT 01.

Pedal operation



Press the pedals 1 and 2 for Bass drum and Open/Close Hi-hat

Hi-hat function – Without Pedal plugged in – OPEN Hi-Hat

Hi-hat function – With pedal pressed – CLOSED Hi-hat

Hi-hat function – With pedal not pressed – OPEN Hi-hat

Demo songs

Press the DEMO button to start and stop the demo song. Press the + or – buttons to cycle through the available songs. Press and hold the + or – buttons to cycle through quickly. There are 30 different demo songs to choose from. The default setting at power up is Demo song 01.

Song button

Press the SONG button during demo song playback. The DRUM, PERC, BASS and CHORD buttons will all illuminate. By pressing those four buttons the drum, percussion, bass and chord tracks of the demo song can be muted as required. Play along to the demo track as desired.

Tempo control

Press the TEMPO button to enter tempo selection mode. Press the + or – buttons to adjust the tempo between 30 and 250 bpm. Press and hold the + or – buttons to cycle through quickly. The default setting at power up is setting 120 bpm.

Hand percussion mode

Press the HAND PERC button to quickly select drum kit number 15 (African Drum Style). Use hands on the pads to play. Press the HAND PERC button again to exit.

Lamp control

Press the LAMP button to switch the LED lights at the front of each pad on or off. The LED lights will illuminate when a pad is hit or during DEMO song playback.

Reverb control

Press the REVERB button to enter reverb selection mode. Press the + or – buttons to adjust the reverb between 0 (OFF) and 30. Press and hold the + or – buttons to cycle through quickly. The default setting at power up is level 0.

Recording and playback

Press the SAVE/REC button to enter the recording mode; the REC LED will light green. Play the drums normally and the beats will be recorded. Press the SAVE/REC button to stop recording. Press the PLAY/STOP button at any time to play back the recorded beats. The recorded beats can be deleted by pressing the SAVE/REC button twice. The playback of the recorded beats is affected by the tempo setting.

Metronome

Press the CLICK button to enter metronome selection mode. The metronome will start. Press the + or – buttons to adjust the metronome mode. Modes available 2-4, 3-4, 4-4, 3-8, 6-8. Press the CLICK button to stop the metronome.

Voice

Press the VOICE button to enter VOICE selection mode. The timbre of each drum pad can be selected individually so you can build a custom drum kit. Note that the sound for the three TOM drums must be from the same kit, they cannot be set individually. The custom drum kit will revert to the pre-programmed kit if the drum kit is changed or if the power is turned off and on.

Switching the unit off

Press the POWER button located in the middle of the control unit to switch off.

9. Playing along to your iPhone, iPod, MP3 player etc.

Bluetooth

After switching on the drum kit, you can connect your Bluetooth device. From your mobile device search for "RockJam Drum" and connect. **If asked for a pairing code, enter '2803'**. When your device is successfully connected you will hear a voice prompt, "Connected".

Aux Input

You can also listen to the sound of a connected external audio device such as an iPhone, iPod or MP3 player through your drum kit. Connect one end of the 3.5 mm jack cable supplied to the LINE IN socket located on the rear panel of the drum kit, and the other end to your audio equipment (iPhone, iPod, MP3, PC, CD player, etc.). This feature is great for practice and allows you to play along to a favourite music track.

NOTE: For Bluetooth and Aux Input, use the volume control of the connected device to adjust the playback volume of the music track. The music volume cannot be adjusted by the + and - keys of the drum kit.

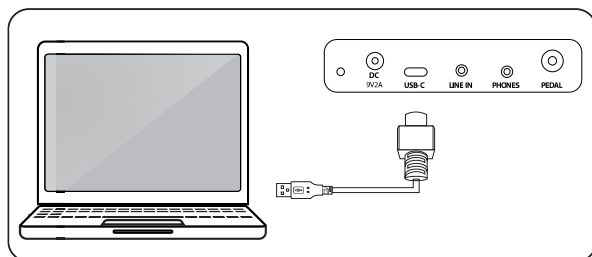
10. Connecting headphones or external speakers

Headphone, Earphones or external amplified speakers can be connected to the PHONES socket on the rear of the drum kit; this is great for private practice.

WARNING! The headphone output can be very loud. When using headphones please lower the volume to minimum before striking the drum pads and then adjust to a suitable level.

11. Connecting to a computer (MIDI Out)

The drum kit can be connected to a personal computer, either Windows or MAC using the USB-C cable supplied. The drum kit hardware is compatible with both Windows and MAC and can be used with software such as Sonar, Cubase, Nuendo and Ezdrummer.



12. Troubleshooting and Support

If a problem occurs please check the following table before returning the unit. If the problem cannot be solved with the following information then please return the item to the store where it was purchased from.

Problem	Remedy
Charging The red charge light does not turn on.	<ul style="list-style-type: none">- Make sure the power adapter cable is connected properly.- Make sure the power switch on the drum kit is set to on.- Make sure that the power outlet is switched on.
Abnormal sound Drum sounds are heard when the pedals are plugged and unplugged	<ul style="list-style-type: none">- This is not a fault.- To avoid the issue please insert the pedals before switching on.
No sound In normal use When using headphones	<ul style="list-style-type: none">- Make sure the volume has not been set to minimum (Off position).- Make sure that the headphones are plugged in fully and that the volume is not set to minimum (Off position).
iPod/iPhone/Smartphone/MP3 playback The volume of the music cannot be adjusted with the VOL- and VOL+ buttons	<ul style="list-style-type: none">- This is not a fault.- Adjust the volume on the audio device.
Unresponsive The drum kit buttons do not respond to presses/ The audio frequency lights do not turn on.	<ul style="list-style-type: none">- This is not a fault.- The drum kit may be out of charge. Connect the drum kit to a power source. The red charge light should appear when charging. Charge for a minimum of 3 hours.

13. Product Specifications

DC Power:	9V DC @ 2.5A
Rechargeable Lithium Battery:	7.4V, 1,800 mAh

Dimensions:	46.2 (L) x 30.2 (W) x 11.0 (H) cm
Functions:	7 Drum pads, Velocity sensitive, 16 Drum kits, 30 Demo songs, Record, Playback, MIDI out, AUX input, Audio output, Bluetooth
Weight:	2,510 g
Material:	ABS + Silicone
Wireless Output	Frequency Band : 2402 – 2480 MHz, Power : 3 dBm EIRP

14. Product disposal instructions

The symbol shown here and on the product means that the product is classed as Electrical or Electronic Equipment and should not be disposed with other household or commercial waste at the end of its working life.



The Waste Electrical and Electronic Equipment (WEEE) Directive (2012/19/ EU) has been put in place to encourage the recycling of products using best available recovery and recycling techniques to minimise the impact on the environment, treat any hazardous substances and avoid the increase of landfill.

When you have no further use for this product, please dispose of it using your local authority's recycling processes. For more information, please contact your local authority or the retailer where the product was purchased.

15. FCC Compliance Statement

This device complies with part 15 of the FCC Rules. Operation is subject to the following two conditions: (1) This device may not cause harmful interference, and (2) this device must accept any interference received, including interference that may cause undesired operation.

16. EU and UK Regulatory Compliance

PDT Ltd. As manufacturer declares that the radio equipment described within is in compliance with Directive 2014/53/EU (Radio Equipment) and bears the CE and UKCA marks in accordance with that directive.

The full text of the EU declaration of conformity is available at the following internet address: <https://pdtuk.com/declaration-of-conformity-library/>

European Distributor and Authorised Representative:
AVESTA, 33 Avenue du Maréchal - de - Lattre - de - Tassigny, 94120 Fontenay-sous-Bois, France



RockJam is a registered trademark of:

PDT Ltd., Unit 4B, Greengate Industrial Estate, White Moss View, Middleton, Manchester, M24 1UN, United Kingdom
info@pdtuk.com

iPod and iPhone are trademarks of Apple Inc. registered in the U.S. and other countries.
MAC is a registered trademark of Apple Inc.