

User Manual of DSC Switcher Tool for ThinkPad Universal Thunderbolt 4 Dock

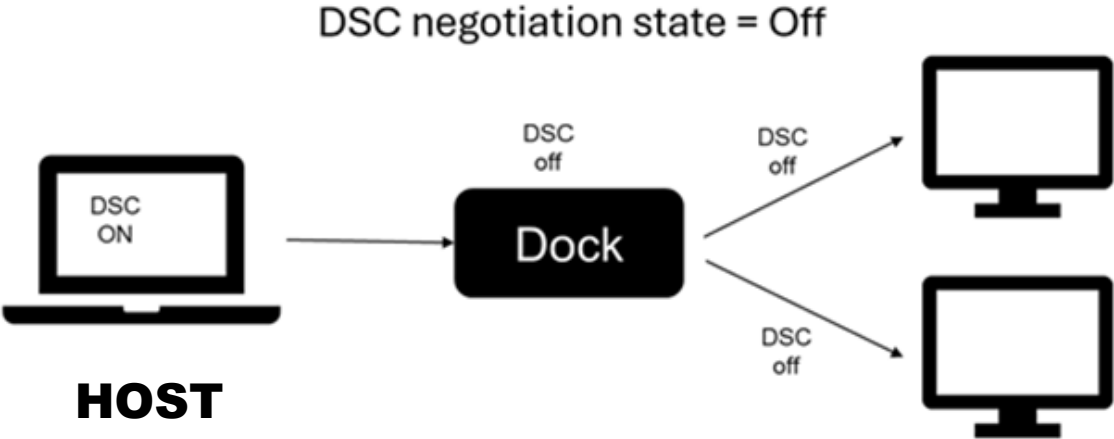


Content

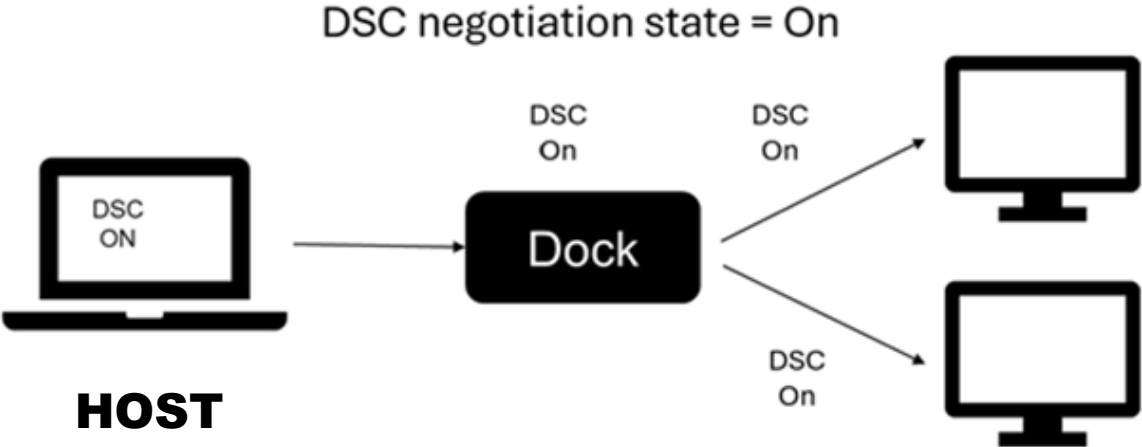
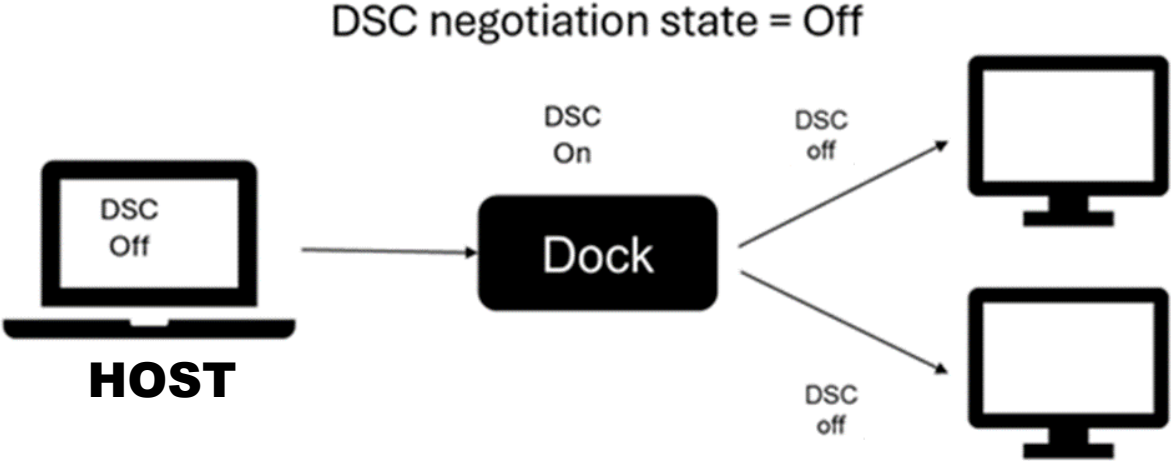
- User Scenario
- Lenovo TBT4 Display Connection
- DSC Switcher Tool UI Introduction
- DSC Switcher Log Information
- Tool Execution
- Execution Cases

User Scenario

Host DSC ON



Host DSC OFF

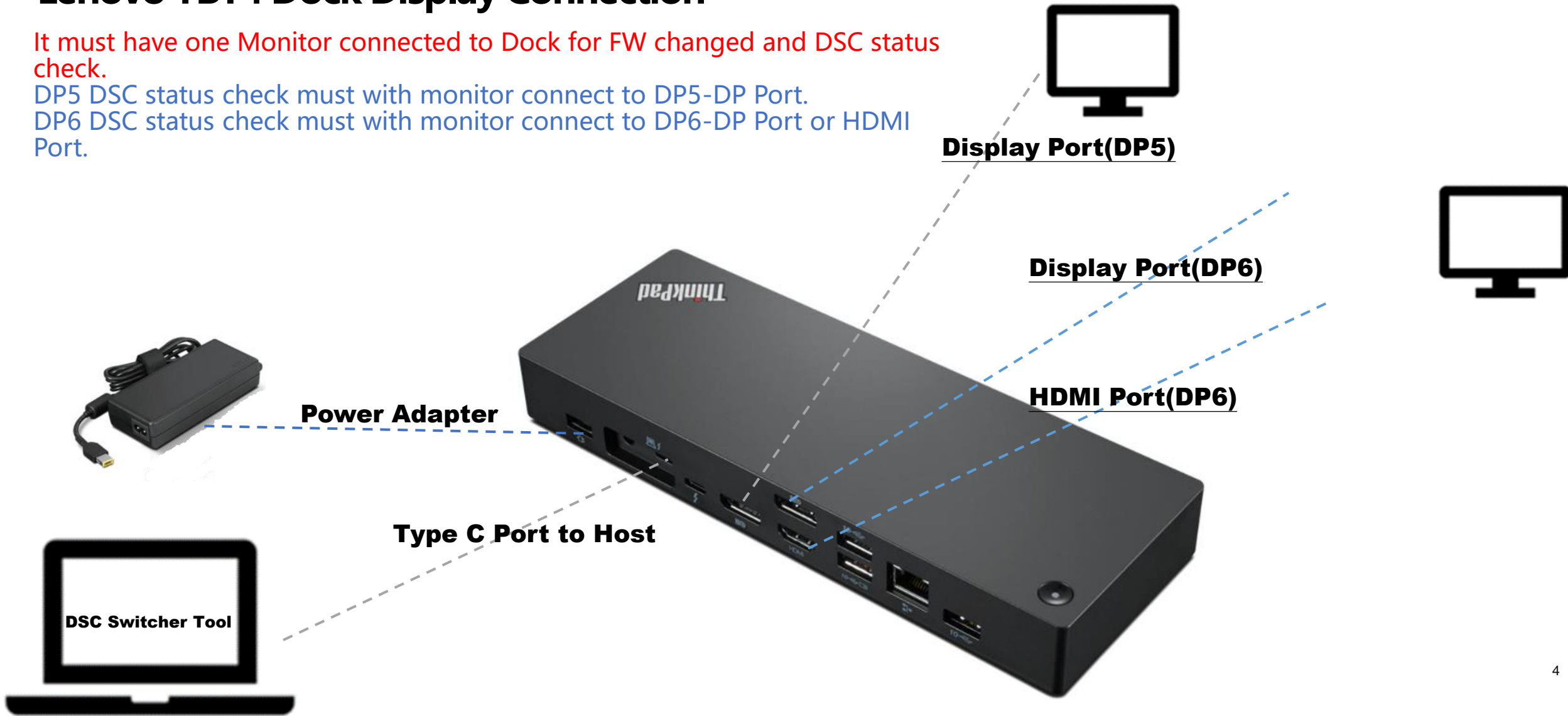


Lenovo TBT4 Dock Display Connection

It must have one Monitor connected to Dock for FW changed and DSC status check.

DP5 DSC status check must with monitor connect to DP5-DP Port.

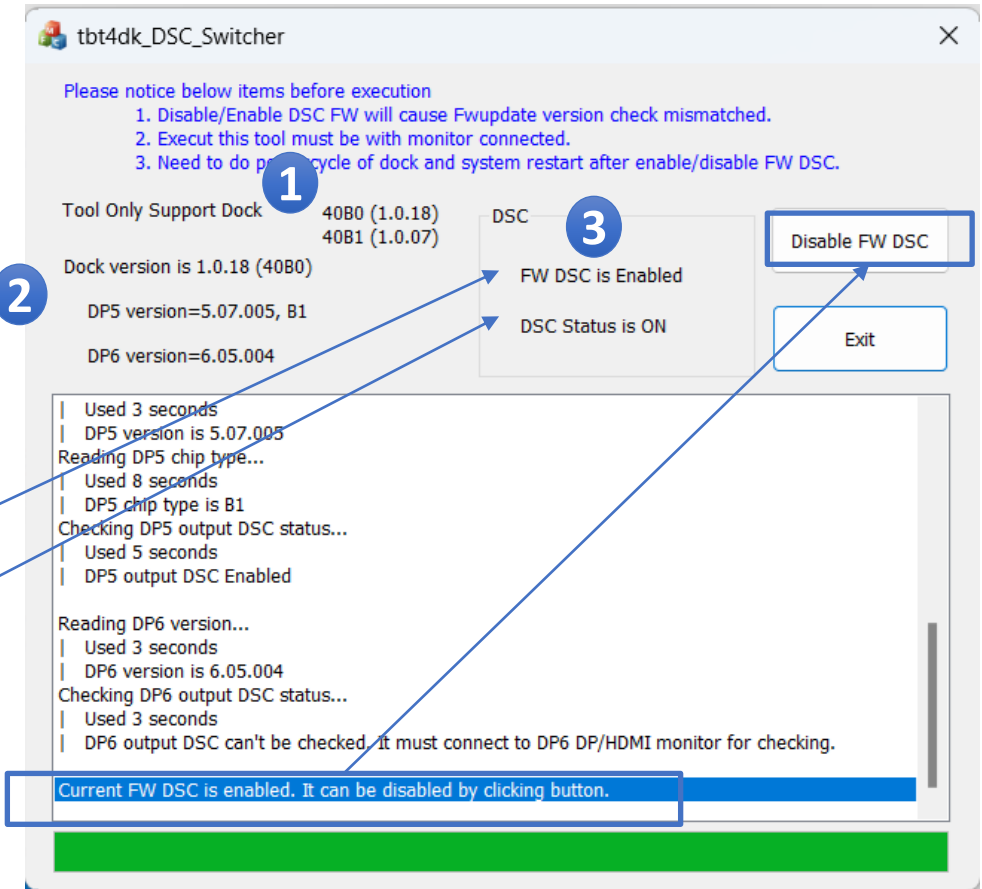
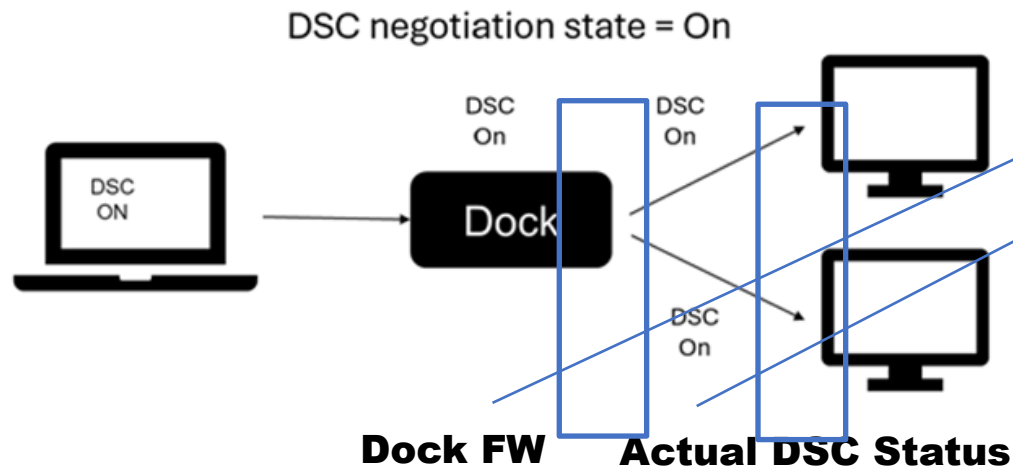
DP6 DSC status check must with monitor connect to DP6-DP Port or HDMI Port.



DSC Switcher Tool UI Introduction

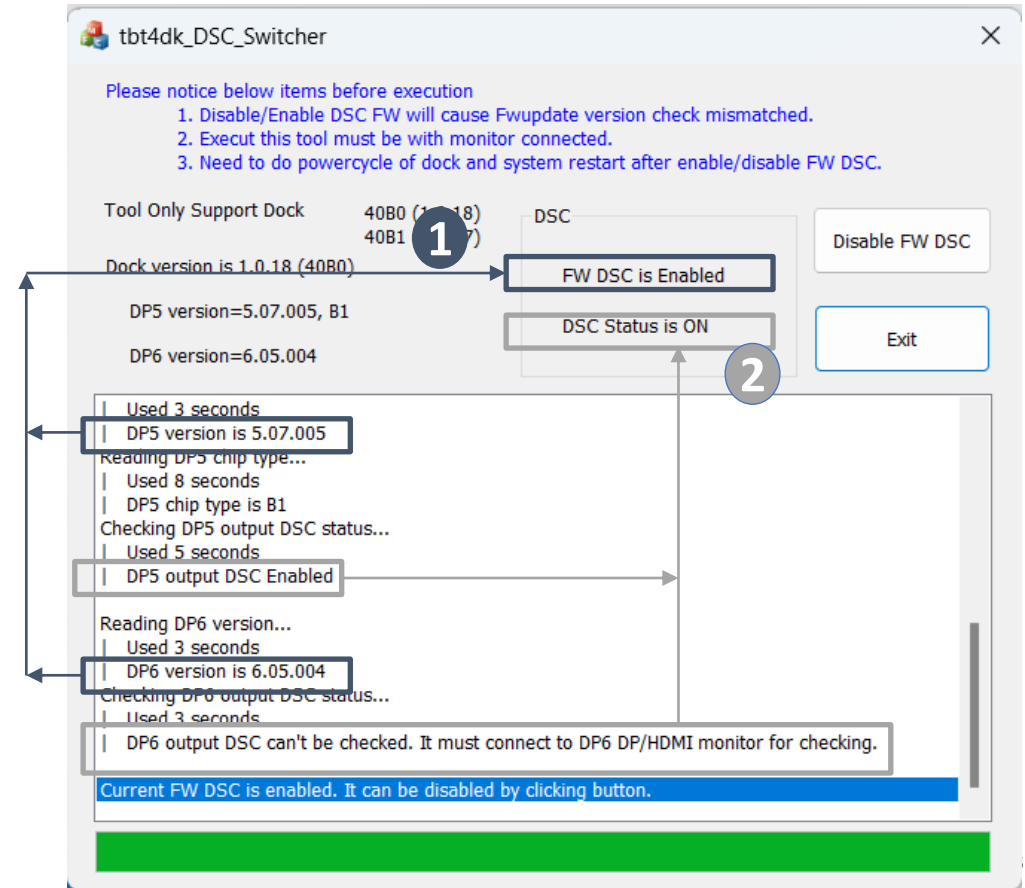
User Interface Introduction as below:

- (1) Supported Dock model with FW version
- (2) Detected Dock FW version and Current DP FW
- (3) Display if Current DP FW is supporting DSC Function or not. And actual DSC status output is ON or OFF.
- (4) Disable/Enable FW DSC Button. If Current FW DSC is enabled, user can click this button to disable DSC. If Current FW DSC is disabled, user can click this button to enable DSC.



DSC Switcher Tool Log Information

- (1) It shows detected DP5 & DP6 FW version and judge current FW DSC function is enabled or disabled.
- (2) Detect actual DSC function is ON or OFF by actual monitor connection.

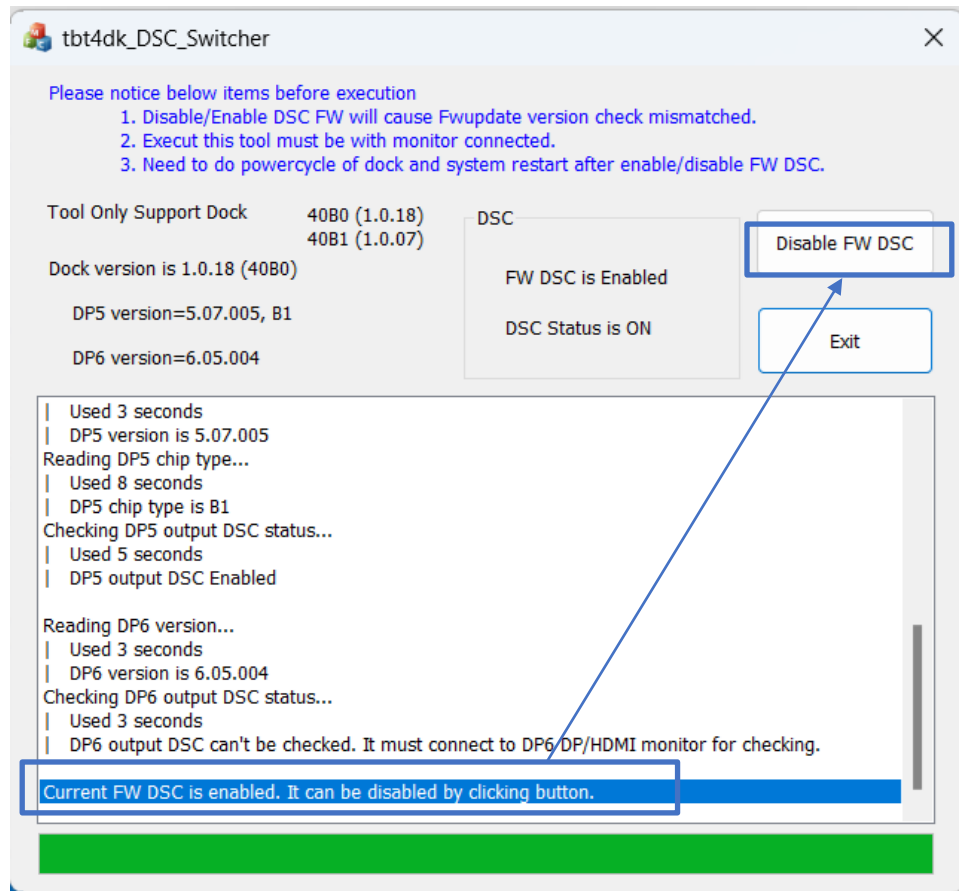


- tbtdk_DSC_Switcher_testcase-v1.0-win32-2024.07.10.x86
- tbt4dk_DSC_Switcher1018.exe
- tbt4dk_DSC_Switcher_20240806153458.log

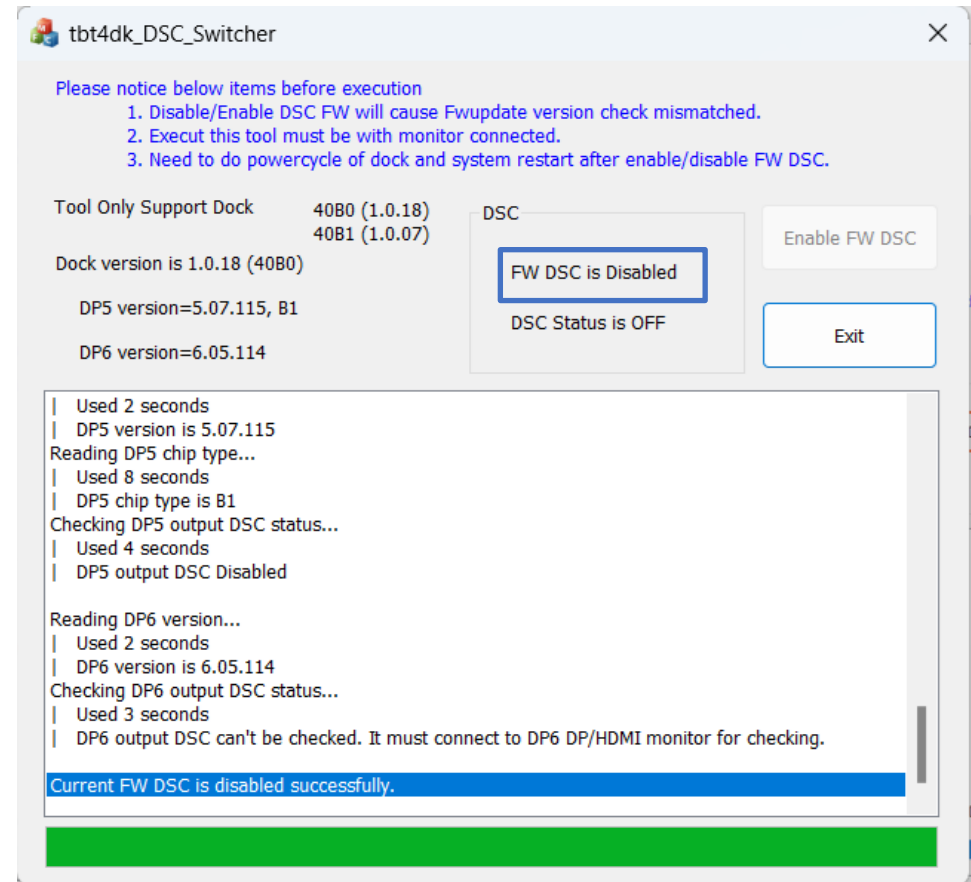
Log Output File is “tbt4dk_DSC_Switcher_yyyymmddhhmmss.log”

Tool Execution

Tool Execution_Disable FW DSC



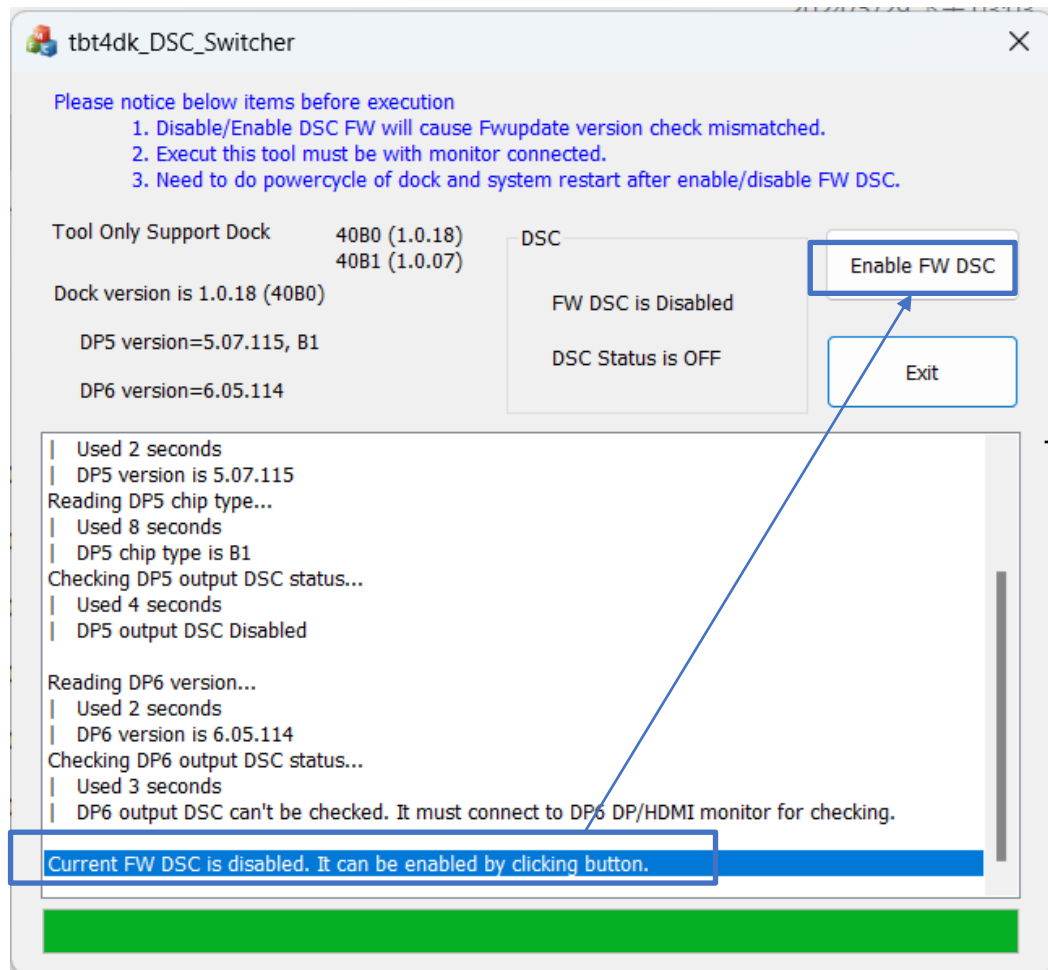
Disable FW DSC



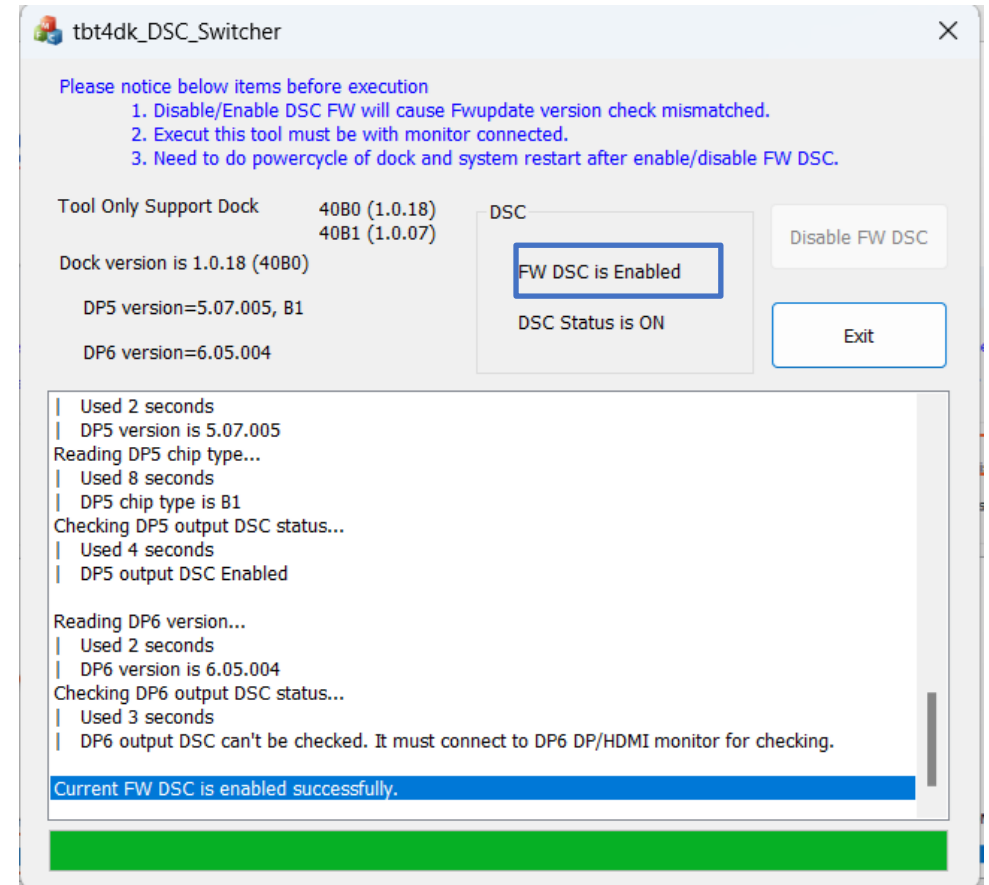
DP FW support DSC Function

DP FW DSC is Disabled

Tool Execution_Enable FW DSC



Enable FW DSC

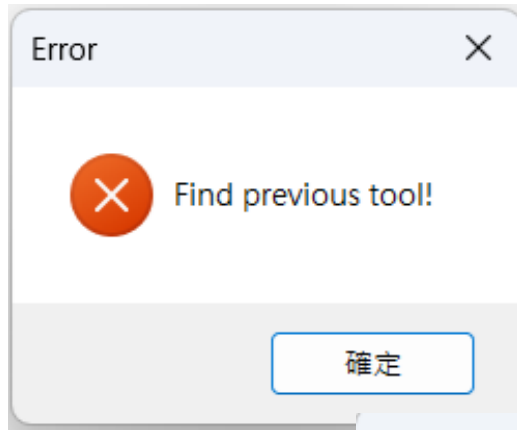


DP FW not support DSC Function

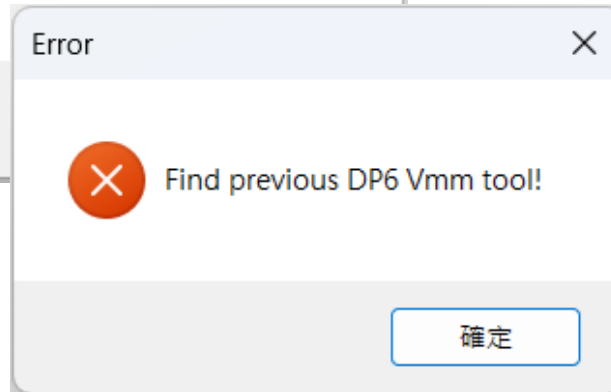
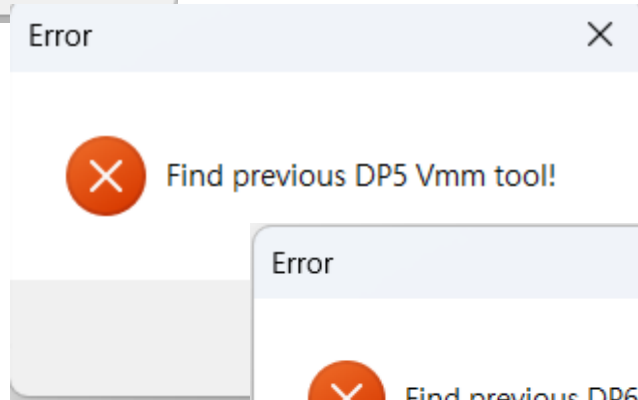
DP FW DSC is Enabled

Execution Cases

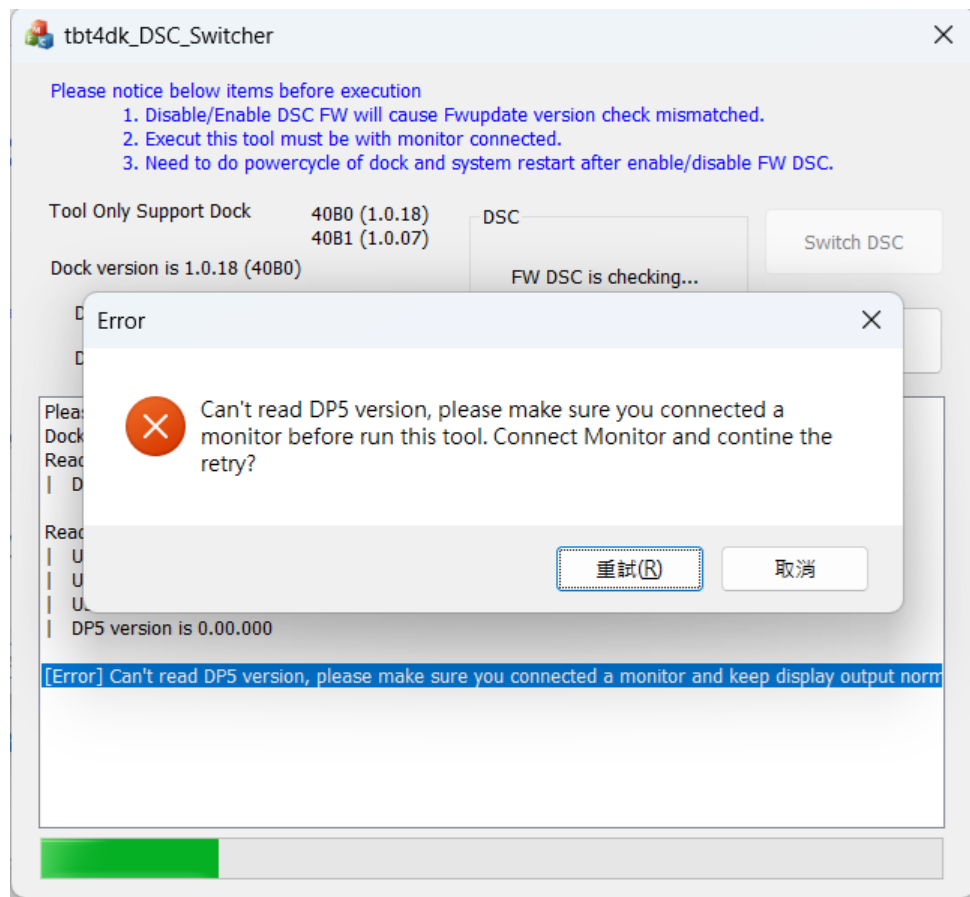
Case 1- Find Previous Tool



Exit this tool and continue to confirm if this tool or Vmmtool is already in execution.



Case 2- Can't Read DP5/DP6 Version

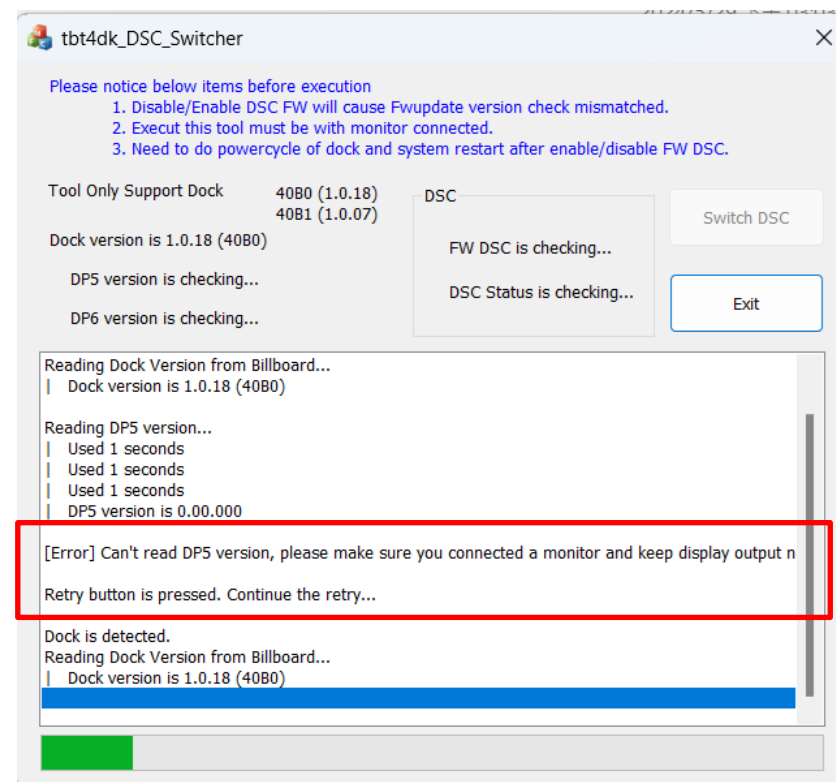


Need to make sure at least one monitor is connected to dock well.

User can select below action

-Retry: Make sure one monitor is connected to dock and then continue to retry detecting DP FW version

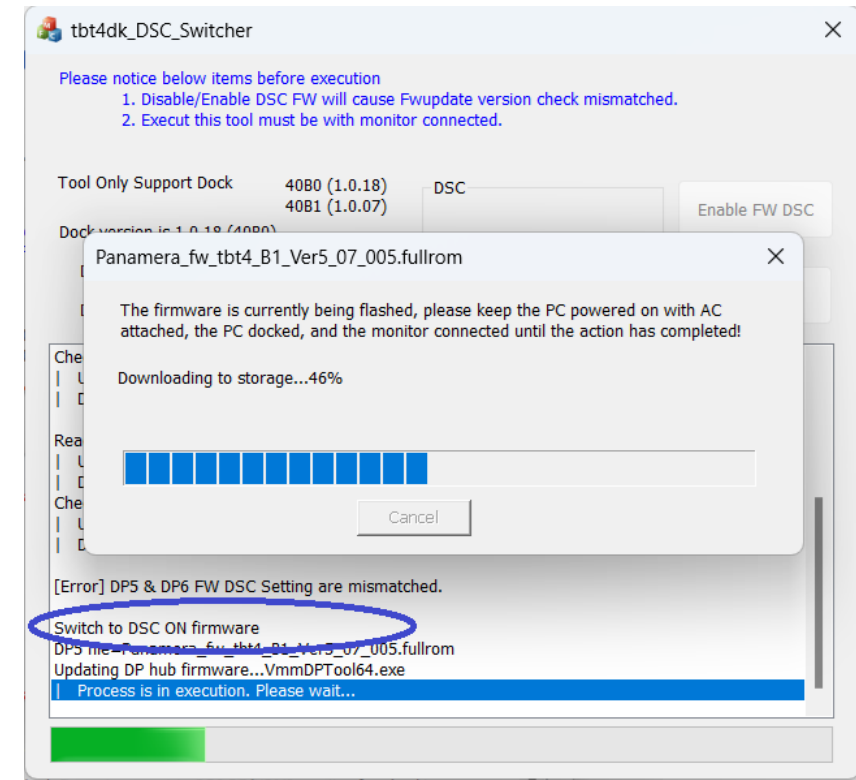
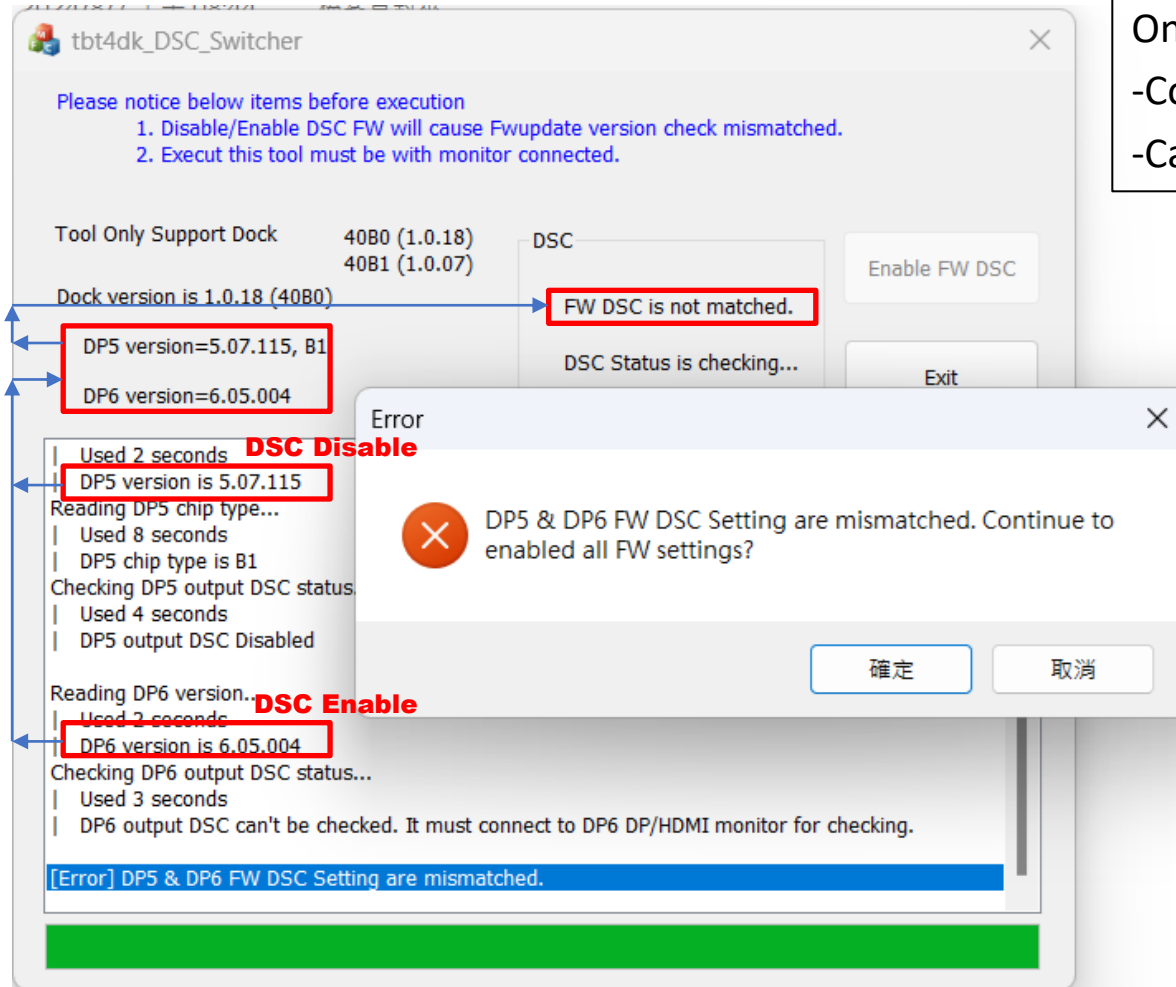
-Cancel: Exit this tool.



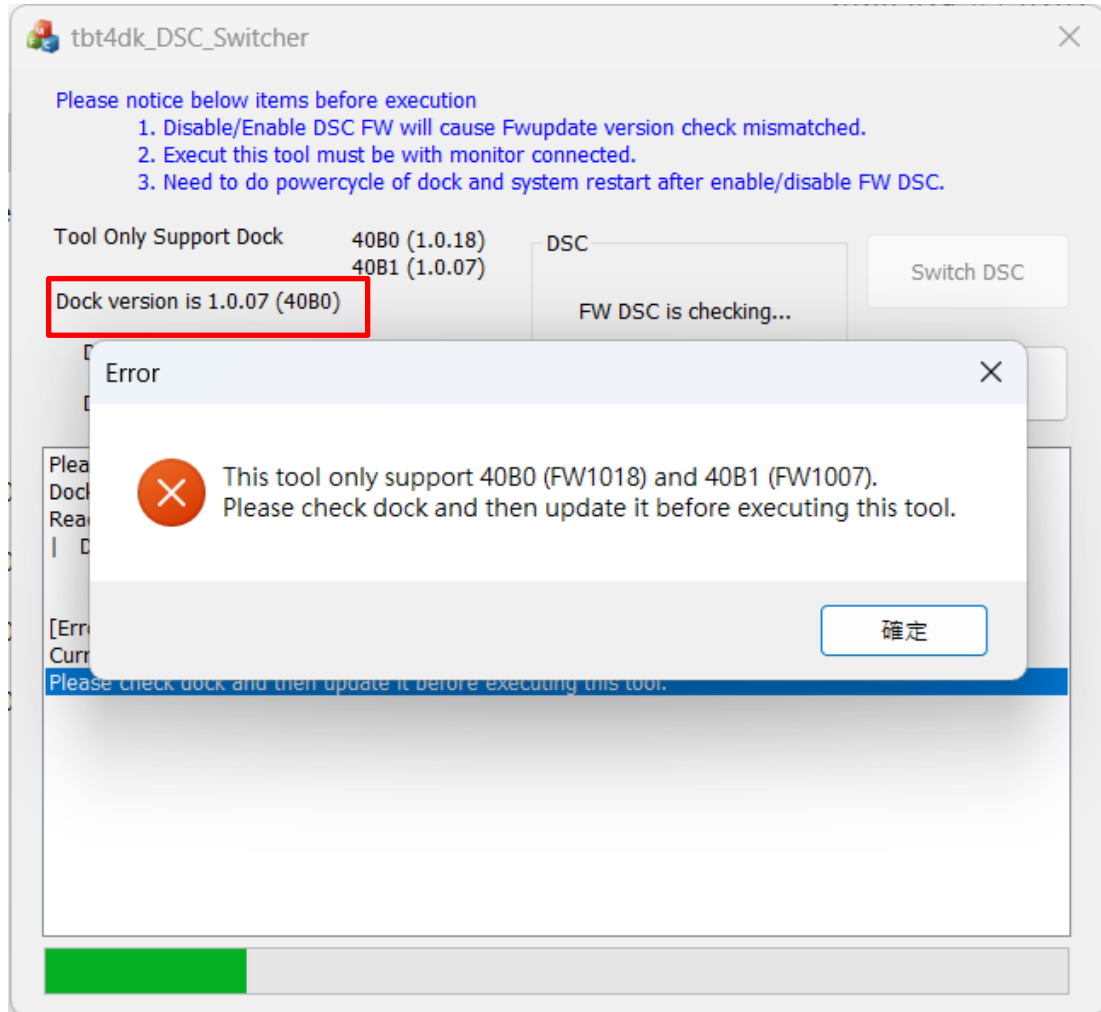
Case 3- DP5 & DP6 FW DSC Setting are Mismatched

One of DP FW DSC setting is enabled but another one is disabled.

- Continue: Continue to enable DP5&DP6 DSC Setting by update FW.
- Cancel: Exit this tool.



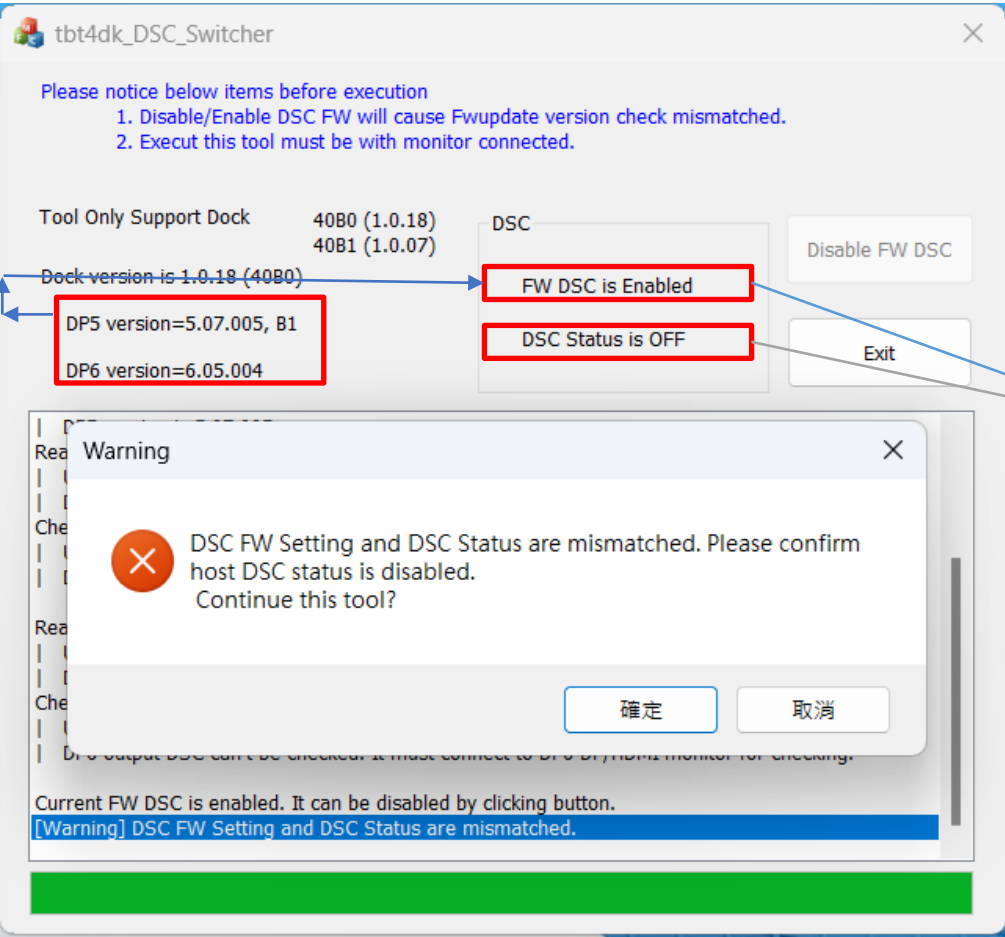
Case 4- This Tool only Support...



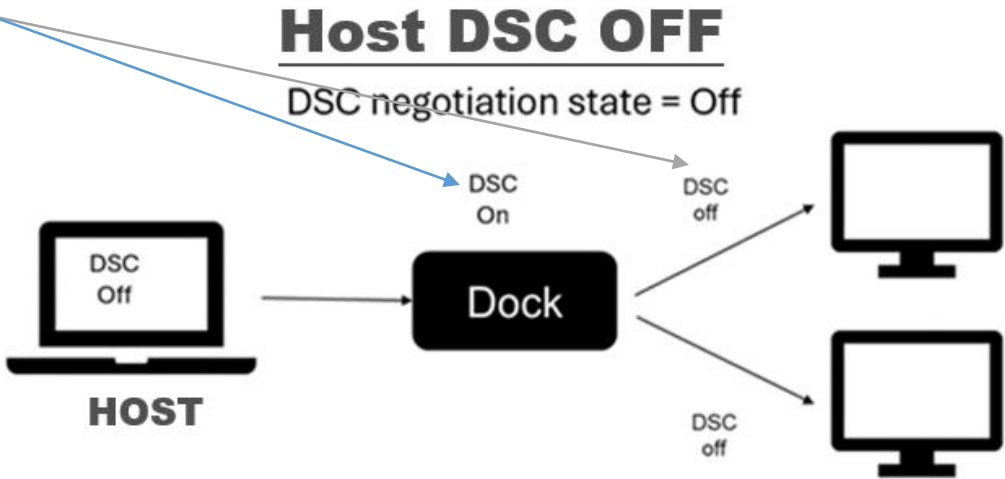
The detected dock with firmware version is not support.
This tool only support **40B0 with firmware V1.0.18** and
40B1 with firmware V1.0.07.

Refer this picture, the dock is 40B0 but firmware is only
V1.0.07. Users need to update it to V1.0.18 before this tool
execution.

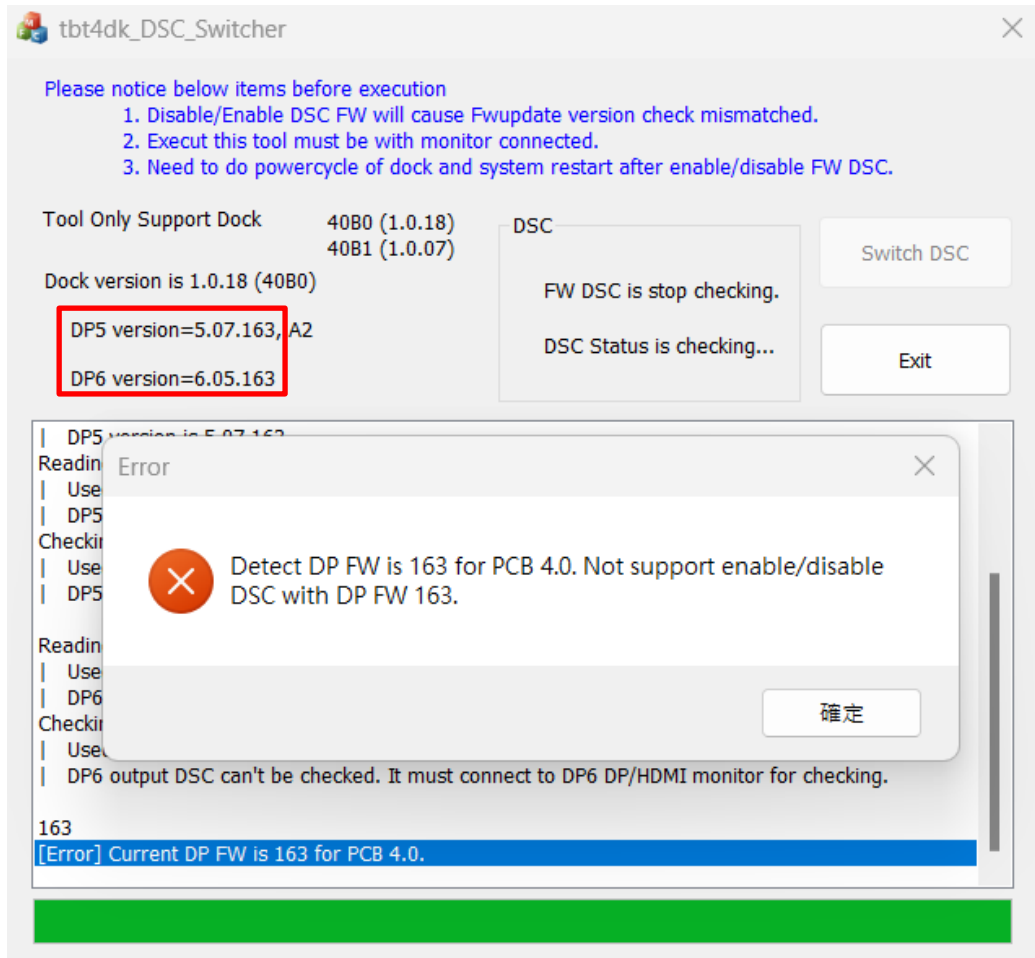
Case 5- DSC FW Setting and DSC Status are Mismatched.



The DP DSC Setting are enabled but actual DSC Status is OFF.
It may cause DSC Status OFF by host setting(refer below user scenario)
-Continue: Ignore this message and continue to disable FW DSC.
-Cancel: Exit this tool.



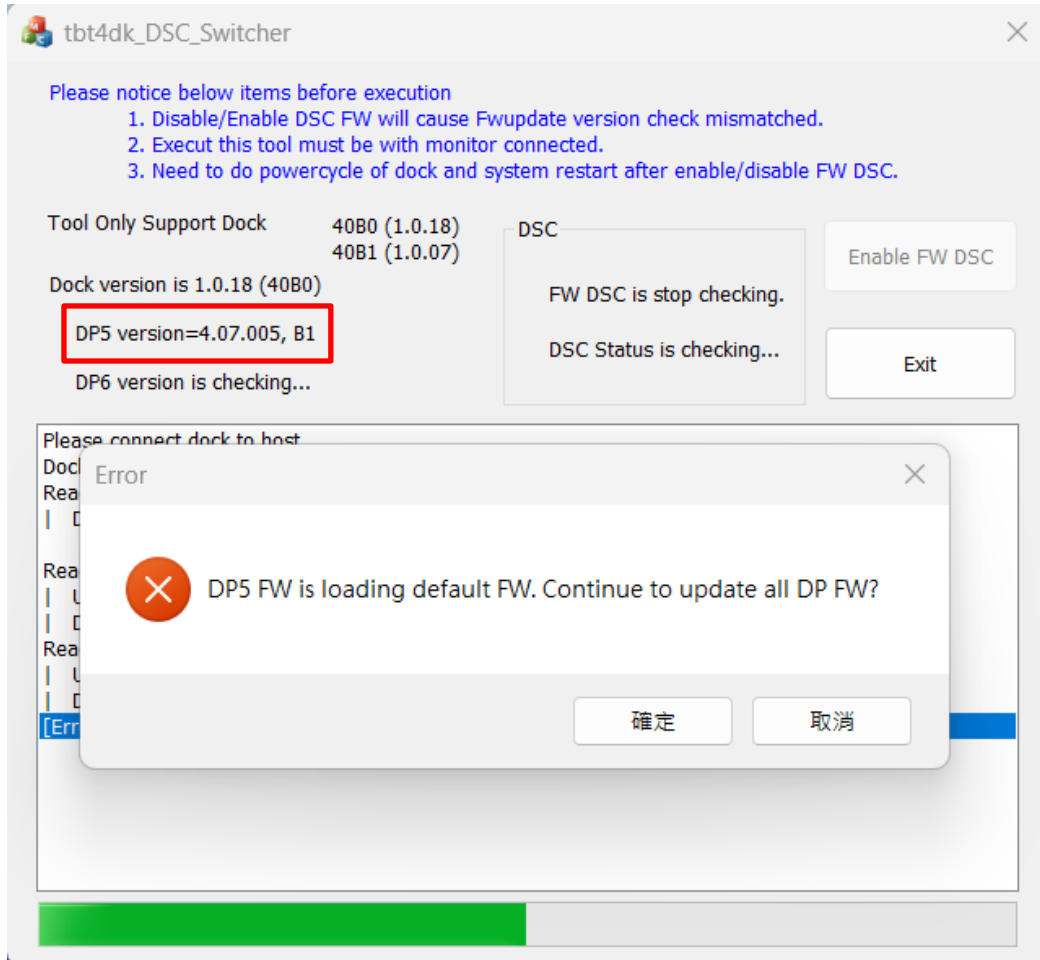
Case 6-Detect Current DP FW Version is X.XX.163



Current DP FW Version is X.XX.163 supported for PCB 4.0 only.

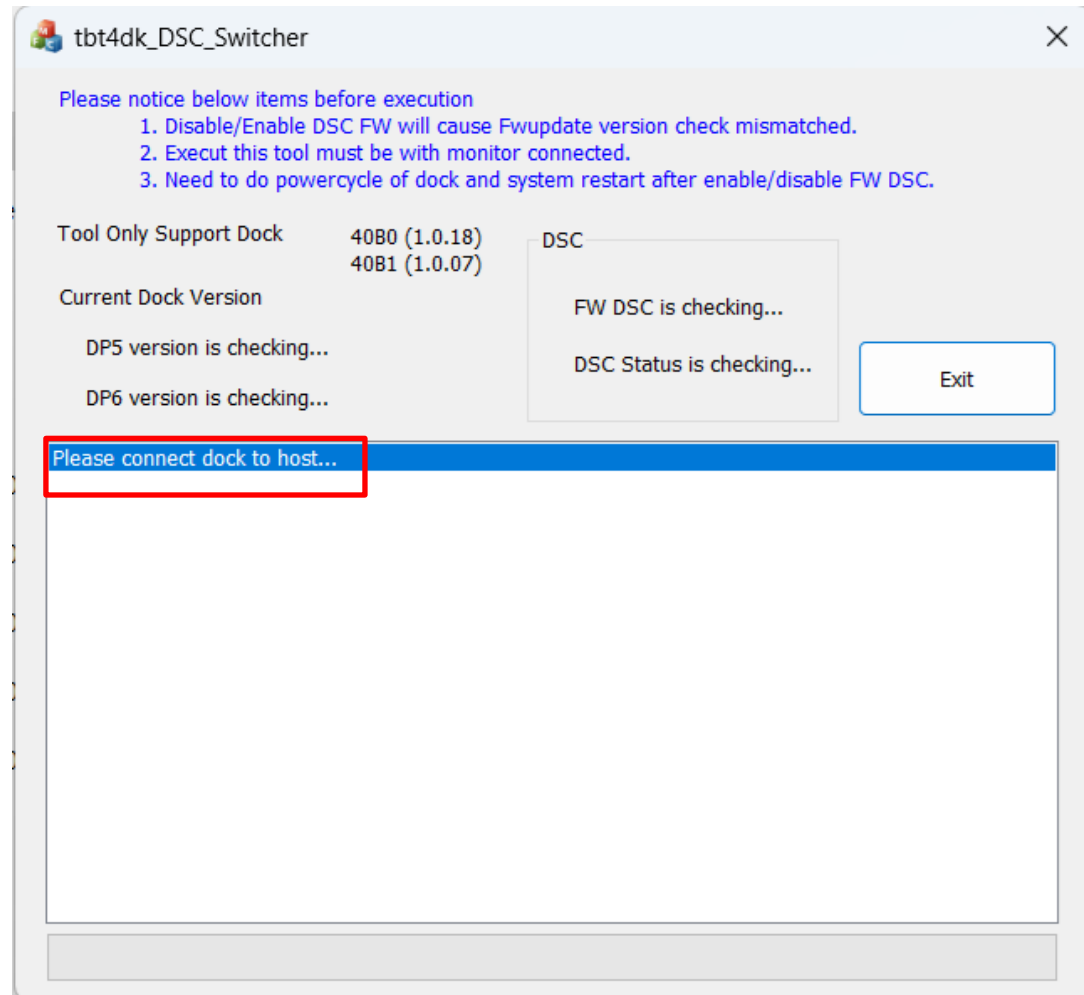
The PCB 4.0 only can use X.XX.163 DP FW. Then it can not support to enable/disable DSC with this tool.

Case 7-DP Load Default FW



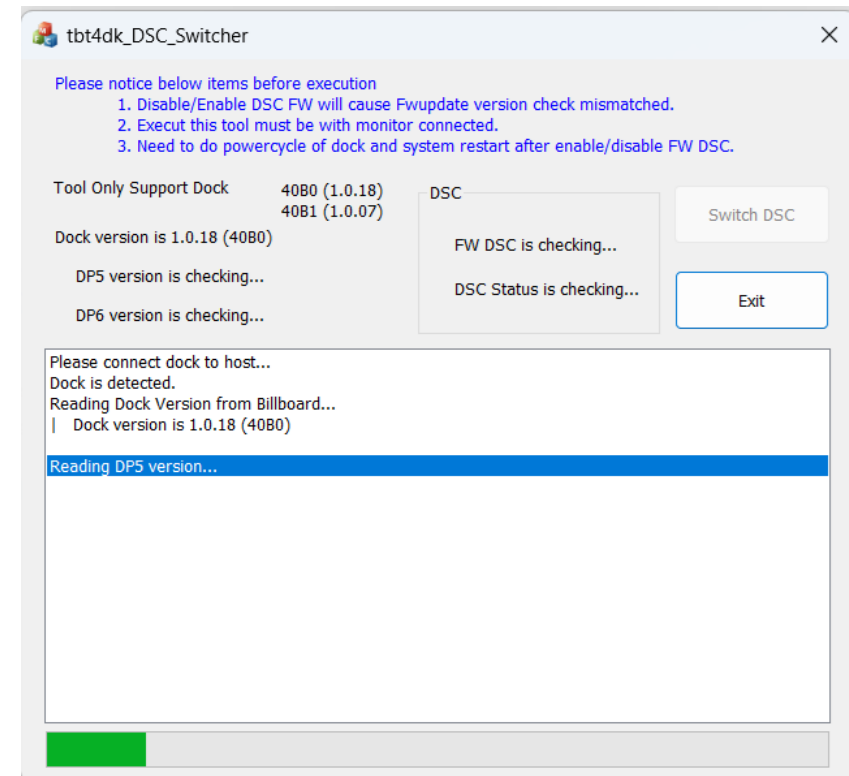
Current DP is loading default FW with unknown error.
User can select to continue updating all DP FW for recovery.
-Continue: Continue to update all DP FW with DSC enabled.
-Cancel: Exit this tool

Case 8-Please Connect Dock to Host

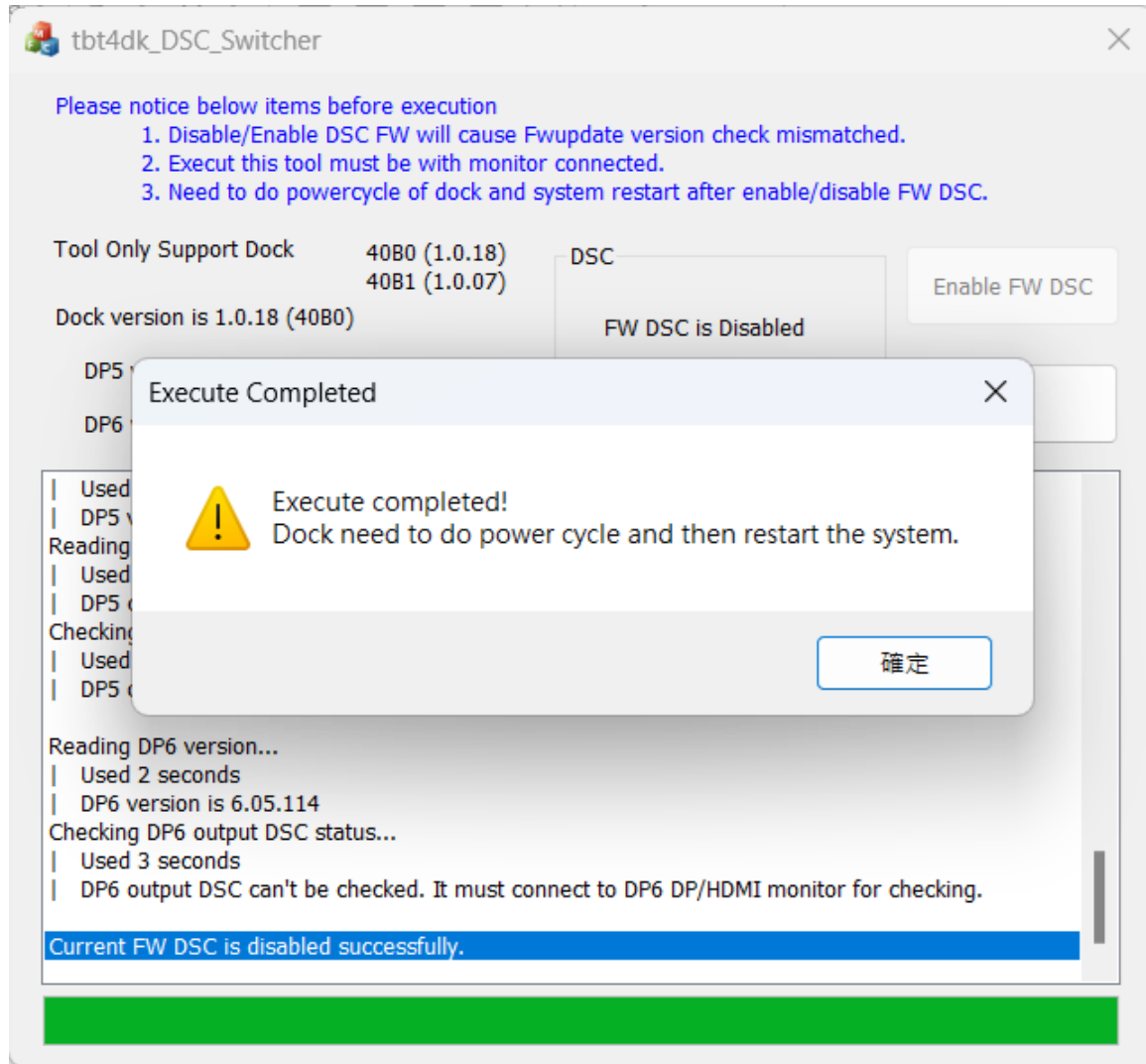


Current dock is not detected from host.

Connect dock to host and then tool execution will restart automatically.



Case 9- Execute Completed



Execute to enable/disable FW DSC completed.
Reminder user to do dock power cycle and to restart the system after it.



**Smarter
technology
for all**

Lenovo

thanks.