

iQ300, heat pump tumble dryer, 8 kg, White
WT45HV10GC



| | |
|---------|----------------------------------|
| WZ11410 | Stacking kit |
| WZ20160 | Condenser drainage kit |
| WZ20400 | Stacking kit with pull-out shelf |

iSensonic heat-pump dryer for very efficient drying in the class A++.

- ✓ Sensor-controlled autoDry technology prevents laundry from shrinking when being dried.
- ✓ Special drying programme for functional textiles such as sportswear and outdoor clothing.
- ✓ 40 minute quick dry programme: Rapid 40.
- ✓ softDry drum system for extremely gentle drying
- ✓ Fast and careful drying of small loads – Rapid 40

| | |
|--|---------------------|
| Installation type: | Free-standing |
| Removable top: | No |
| Door opening: | Right |
| Color / Material body: | White |
| Length electrical supply cord: | 145.0 cm |
| Dimensions: | 842x598x613 mm |
| Net weight: | 48.1 kg |
| Drum volume: | 112 l |
| Fluorinated greenhouse gases: | No |
| Hermetically sealed equipment: | Yes |
| Connection rating: | 625 W |
| Fuse protection: | 10 A |
| Voltage: | 220-240 V |
| Frequency: | 50 Hz |
| Drying process: | automatic |
| Capacity: | 8.0 kg |
| Energy efficiency rating: | A++: very efficient |
| Energy consumption electric dryer, full load - NEW (2010/30/EC): | 1.87 kWh |
| Standard cotton programme time at full load: | 205 min |
| Energy consumption electric dryer, partial load - NEW (2010/30/EC): | 1.14 kWh |
| Standard cotton programme time at partial load: | 130 min |
| Weighted annual energy consumption, electric dryer - NEW (2010/30/EC): | 236.0 kWh/annum |
| Power consumption in off-mode - NEW (2010/30/EC): | 0.10 W |
| Power consumption in left-on mode - NEW (2010/30/EC): | 0.75 W |
| Weighted programme time: | 162 min |
| Condensation efficiency class - NEW (2010/30/EC): | B |
| Average condensation efficiency full load (%): | 81 % |
| Average condensation efficiency partial load (%): | 81 % |
| Weighted condensation efficiency (%): | 81 % |



iQ300, heat pump tumble dryer, 8 kg, White WT45HV10GC

Main features

- Capacity: 8 kg
- Dryer type: Condenser
- Energy efficiency class: A++
- Energy consumption 236.0 kWh per year, based on 160 drying cycles of the standard cotton programme at full and partial load, and the consumption of the low-power modes. Actual energy consumption per cycle will depend on how the appliance is used
- Energy consumption of the standard cotton programme at full load 1.87 kWh and energy consumption of the standard cotton programme at half load 1.14 kWh
- power consumption in off-mode 0.1 W and in left-on mode 0.75 W
- The programme Cotton cupboard dry used at full and partial load is the standard drying programme to which the information in the label and the fiche relates, this programme is suitable for drying normal wet cotton laundry and is the most efficient programme in terms of energy consumption for cotton.
- Weighted programme time of the standard cotton programme at full and partial load: 162 min.
- Programme time of the standard cotton programme at full load 205 min and programme time of the standard cotton programme at partial load 130 min.
- Condensation efficiency class B on a scale from G (least efficient) to A (most efficient).
- standard cotton programme at full load 81 % and average condensation efficiency of the standard cotton programme at partial load 81 %.
- Weighted condensation efficiency for the standard cotton programme at full and partial load: 81 %.
- Noise level: 65 dB (A) re 1 pW

Programmes

- Special programmes: woollen finish, mix, outdoor, towels, Time program warm, Time program cold, lingerie, Super 40, shirts/blouses

Options

- Anti crease cycle 60 min at the end of the programme
- Touch control buttons: Low Heat, less ironing, programme length, Fine-tuning of drying aim, 24 h Ready in

Convenience and Safety

- Protection filter for condensor
- DUO-Tronic
- Fully electronic control dial for sensor drying programmes, timed and special programmes
- LED-Display for remaining time and 24 h end time delay, programme status indication, special functions
- Active flow drying system: Big Stainless steel with textile care structure, soft design paddles
- AntiVibration Design - More stability
- Wool Drying Basket
- Drain set for condensate
- Drum interior light

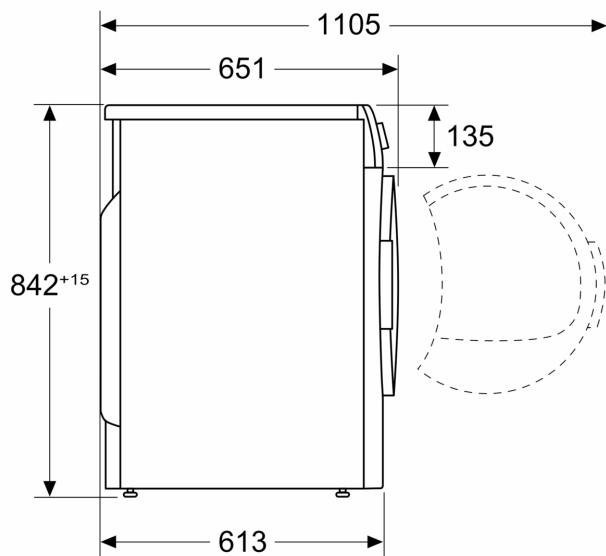
- Childproof door lock
- Buzzer to indicate the end of cycle
- pull-open latch
- Door hinge: right-hand
- Metal door closing hook

Technical information

- Can be built-under
- Dimensions (H x W): 84.2 cm x 59.8 cm
- Appliance depth: 61.3 cm
- Appliance depth incl. door: 65.1 cm
- Appliance depth with open door: 110.5 cm

**iQ300, heat pump tumble dryer, 8
kg, White
WT45HV10GC**

Measurements in mm



Measurements in mm

