



**SHENZHEN FZONE TECHNOLOGY CO., LTD.**

2nd floor, Building 12, Xicheng Industrial Area, Xixiang Town,  
Baoan District, Shenzhen Guangdong China. 518101

E-mail: [support@xviveaudio.com](mailto:support@xviveaudio.com)

Tel: +86-755-2912 3526

[www.xvive.com](http://www.xvive.com)

**PATENT PENDING**



**U35C**

# MICROPHONE WIRELESS SYSTEM

For Condenser Microphones

English Manual



## INTRODUCTION

Xvive's U35C Microphone Wireless System operates on the 5.8 GHz band and supplies built-in 48V / 12V phantom power to any connected condenser microphone. The uncompressed 24-bit / 48 kHz audio is crystal clear and low-latency.

U35C's True Diversity receiver scans the system's 6 channels and automatically selects the strongest one. The built-in battery lasts 3–7 hours. Enjoy wireless freedom with great sound and plug-and-play convenience!



**CAUTION**  
**RISK OF ELECTRIC SHOCK**  
**DO NOT OPEN**



### **WARNING:**

TO REDUCE THE RISK OF FIRE OR ELECTRIC SHOCK, DO NOT REMOVE SCREWS.

NO USER-SERVICEABLE PARTS INSIDE.

REFER SERVICING TO QUALIFIED SERVICE PERSONNEL.

### **WARNING:**

TO REDUCE THE RISK OF FIRE OR ELECTRIC SHOCK, DO NOT EXPOSE THE APPLIANCE TO RAIN OR MOISTURE.



Radio Approvals: FCC Part 15.249, RSS-247(Canada), EN 300 440 (Europe), EN 301.489 (Europe)

This device is in compliance with the essential requirements and other relevant provisions of Directive 2014/53/EU. All essential radio test suites have been carried out.

The Korea version has passed KC certification.

Detailed DOC file please visit our website: [www.xvive.com](http://www.xvive.com)

### **IC CAUTION:**

This device complies with Innovation, Science and Economic Development Canada's licence-exempt RSS standard(s).

Operation is subject to the following two conditions:

- (1) this device may not cause interference,
- (2) this device must accept any interference, including interference that may cause undesired operation of the device.

Le présent appareil est conforme aux CNR d'Industrie Canada applicables aux appareils radio exempts de licence. L'exploitation est autorisée aux deux conditions suivantes :

- (1) l'appareil ne doit pas produire de brouillage, et
- (2) l'utilisateur de l'appareil doit accepter tout brouillage radioélectrique subi, même si le brouillage est susceptible d'en compromettre le fonctionnement.

---

## FCC CERTIFICATION

---

FCC Caution: Any changes or modifications not expressly approved by the party responsible for compliance could void the user's authority to operate this equipment.

**This device complies with Part 15 of the FCC Rules. Operation is subject to the following two conditions:**

- (1) This device may not cause harmful interference, and
- (2) this device must accept any interference received, including interference that may cause undesired operation.

**NOTE:**

This equipment has been tested and found to comply with the limits for a Class B digital device, pursuant to Part 15 of the FCC Rules.

These limits are designed to provide reasonable protection against harmful interference in a residential installation. This equipment generates, uses and can radiate radio frequency energy and, if not installed and used in accordance with the instructions, may cause harmful interference to radio communications.

However, there is no guarantee that interference will not occur in a particular installation.

If this equipment does cause harmful interference to radio or television reception, which can be determined by turning the equipment off and on, the user is encouraged to try to correct the interference by one or more of the following measures:

- Reorient or relocate the receiving antenna.
- Increase the separation between the equipment and receiver.
- Connect the equipment into an outlet on a circuit different from that to which the receiver is connected.
- Consult the dealer or an experienced radio/TV technician for help.

**FCC ID: 2AJ30-U35C IC: 22031-U35C**



**WARNING:** Risk of reproductive harm from exposure to Phthalates.  
[www.P65Warnings.ca.gov](http://www.P65Warnings.ca.gov)

---

## **SAFETY INSTRUCTIONS FOR LITHIUM-ION RECHARGEABLE BATTERIES**

---

This device contains a built-in lithium-ion rechargeable battery that cannot be removed or replaced by the user. To ensure safe use and extend battery life, please strictly follow the safety instructions below:

### **LITHIUM-ION BATTERY SAFETY NOTICE**

If abused or misused, rechargeable batteries may leak. In extreme cases, they may present a risk of explosion, fire, overheating, smoke, or the release of hazardous gases. Xvive accepts no liability for any damage caused by abuse or misuse

### **USAGE AND CHARGING GUIDELINES**

Only charge the device using the included USB-C cable or a charger officially recommended by Xvive.

- Do not charge in high-temperature, humid, or direct sunlight environments.
- If you notice abnormal behavior (e.g., overheating, failure to charge, swelling, or unusual odors), stop using the device immediately and contact Xvive customer support.

- Avoid overcharging or leaving the battery fully discharged for extended periods.

### **PROHIBITED ACTIONS**

- Do not attempt to disassemble, strike, pierce, modify, or burn the product.
- Do not expose the product to high temperatures (e.g., fire, direct sunlight, boiling water) or humid conditions.

### **STORAGE AND LONG-TERM INACTIVITY**

- If the device will not be used for an extended period, charge it every 3 months.
- Store the product at around 50% battery level in a dry, cool, and well-ventilated place away from direct sunlight.

### **DISPOSAL**

The internal battery is not removable. When disposing of the product, please take the entire device to a certified electronic waste collection point. Do not dispose of it with household waste.

---

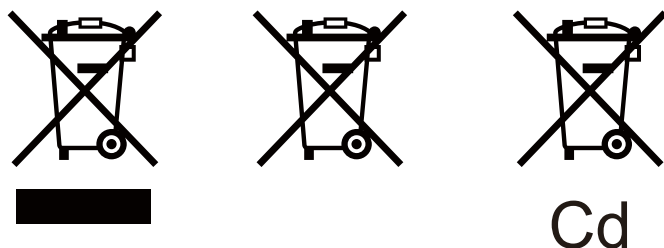
## INFORMATION ABOUT COLLECTION AND DISPOSAL OF OLD ITEMS AND USED BATTERIES

---

### [For customers in the European Union]

If you want to discard electronic items, please contact your dealer or supplier for further information.

These symbols on the products, packaging, or on any documents in the package mean it is incorrect to mix the used electrical and electronic products and batteries with general household garbage. These symbols are only valid in the EU. Please contact your local authorities or dealer for more information on the disposal of old items and used batteries:



To protect our environment, please take old products and used batteries to proper collection places, and follow your national legislation and the Directives 2012/19/EU and 2006/66/EC.

### [Information on Disposal in Countries outside the European Union]

To deal with these old products and batteries properly, please help to save valuable resources and prevent any possibility of side effects on human health and our environment due to the inappropriate disposal of the old products and used batteries.

Please contact your local authorities to get more helpful information on how to dispose of old products and batteries.



Hereby, **SHENZHEN FZONE TECHNOLOGY CO., LTD**, declares that this type of equipment is in compliance with the essential requirements and other relevant provisions of Directive 2014/53/EU

---

## ONE-YEAR LIMITED WARRANTY

---

Xvive Corporation Ltd. [Xvive] warrants our products to be free of defects in materials and workmanship in normal use for a period of one (1) year from the date of original purchase. Please visit <https://www.xvive.com> to register your new purchase.

Xvive will, at its sole discretion, or in affiliation with our authorized retailers, repair or replace at no charge, any unit that is inspected by Xvive or an affiliated Xvive service center and deemed to be defective within the warranty period.

This warranty is non-transferrable.

This warranty is only valid to the original purchaser, only when purchased “new-in-box” from an Authorized Xvive Dealer and with a valid proof of purchase bearing the purchase date.

### **Within the USA:**

- All Xvive warranty claims should be made with the retailer from which the unit was purchased. This applies to both retail stores and online retailers.

### **Outside of the USA:**

- For all warranty and non-warranty claims, the purchaser should contact the Authorized Xvive Retailer from which the unit was purchased within the country or province in which it was purchased for information on how to obtain warranty or non-warranty service.

### **This limited warranty does not cover the following:**

- Products that have been modified in any way;
- Any products whose serial numbers have been altered or removed;
- Exterior cosmetic damage or damage to the finish due to misuse or normal wear and tear;
- Products that were purchased as “used”, items listed as demo stock or refurbished items;
- Damage to the product or parts caused by improper storage by the user;
- Any freight charges (from or to the retailer);

- Shipping damage:
  - Shipping damage claims must be filed with the freight carrier (such as UPS, FedEx).
  - Notify the freight carrier immediately of any shipping damage upon receipt of damaged items to begin the claim process.
  - We also recommend reporting any shipping damage claim within (48) hours of receipt to the Authorized Retailer from which the item was purchased.
  - Keep all original documents and packing materials until freight damage claim has a final resolution.

**For units returned to Xvive USA:**

- The item must be returned in the same format in which it was purchased. If a system containing a transmitter and receiver was purchased, then both units will need to be returned together.
- The purchaser will pay all freight charges to return the original item to Xvive USA or its affiliated service centers.
- If the unit is deemed to be covered by this warranty, Xvive will ship the repaired or replacement unit to the purchaser free-of-charge and without any additional freight charges.
- If the unit is deemed to NOT be covered by this warranty, other charges plus return freight charges will apply.

EXCEPT AS EXPRESSLY SET FORTH ABOVE IN THIS LIMITED WARRANTY, XVIVE MAKES NO OTHER EXPRESS OR IMPLIED WARRANTIES TO THE EXTENT PERMITTED BY LAW. XVIVE ASSUMES NO LIABILITY FOR PROPERTY DAMAGE RESULTING FROM FAILURE OF THIS PRODUCT NOR ANY LOSS OF INCOME, SATISFACTION, OR DAMAGES ARISING FROM THE LOSS OF USE OF SAME DUE TO DEFECTS OR AVAILABILITY OF SAME DURING SERVICE. THIS WARRANTY GIVES YOU SPECIFIC LEGAL RIGHTS AND YOU MAY ALSO HAVE OTHER RIGHTS WHICH VARY FROM STATE TO STATE OR BY COUNTRY OR PROVINCE.

For warranty inquiries not covered in this policy, please contact [support@xviveaudio.com](mailto:support@xviveaudio.com)

---

## **IMPORTANT SAFETY INSTRUCTIONS**

### **PLEASE READ THESE INSTRUCTIONS AND KEEP THEM IN A SAFE PLACE**

---



**WARNING: BEFORE USING YOUR XVIVE 5.8 GHz WIRELESS SYSTEM  
CAREFULLY READ THE OPERATING INSTRUCTIONS.**

1. Observe all instructions carefully in the U35C manual.
2. Do not to perform service operations beyond those described in the U35C manual. Service is required when the apparatus has been damaged in any way, such as:
  - Liquid has been spilled or objects have fallen into the apparatus;
  - The unit has been exposed to rain or moisture;
  - The unit does not operate normally or changes in performance in a significant way;
  - The unit is dropped or the enclosure is damaged
3. Do not place near heat sources, such as radiators, heat registers, or appliances that produce heat.
4. Guard against objects or liquids entering the device. Do not use or place unit near water.
5. Clean only with a dry cloth.
6. Only use attachments/accessories specified by the manufacturer.

---

## FEATURES

---

- 5.8 GHz True Diversity wireless system
- Wide 20 Hz - 20 kHz frequency response
- Use up to 6 sets in one area simultaneously
- 110 dB dynamic range
- 110 dB signal-to-noise ratio
- Less than 5 ms latency
- Provides 12V or 48V phantom power to condenser microphones
- 3–7 hours of battery life, depending on the microphone's phantom power current draw
- High-resolution 24-bit / 48 kHz audio
- Working range of up to 100 ft
- For use with XLR balanced condenser microphones only
- One Transmitter can be connected to two or more Receivers set to the same channel
- The Receiver features a protection circuit that blocks phantom power from the mixer/interface if it is accidentally turned on

\* Never plug single-ended (unbalanced) or ribbon microphones into U35C, as they can be permanently damaged if phantom power is applied to them.

---

## PACKAGE DETAILS

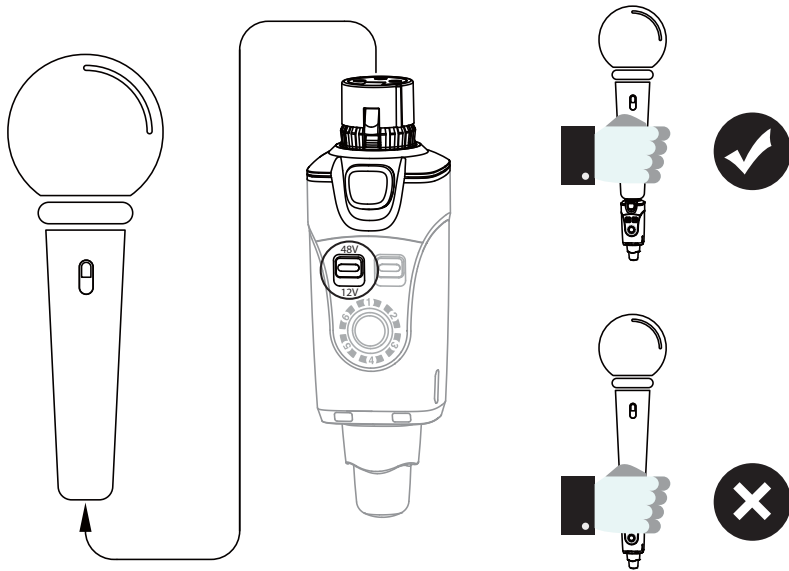
---

U35C Transmitter .....	1 pc
U35C Receiver .....	1 pc
USB Cable .....	1 pc
Manual .....	1 pc
Bag .....	1 pc

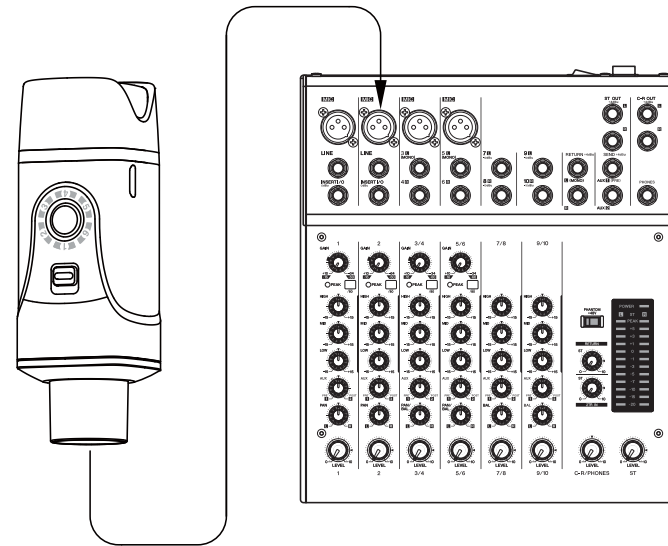
---

## QUICK START

---



1. Plug the U35C Transmitter into your condenser microphone. Set the phantom power switch to 12V or 48V as per the power requirement of your microphone.  
**WARNING:** Never plug single-ended (unbalanced) or dynamic microphones into U35C

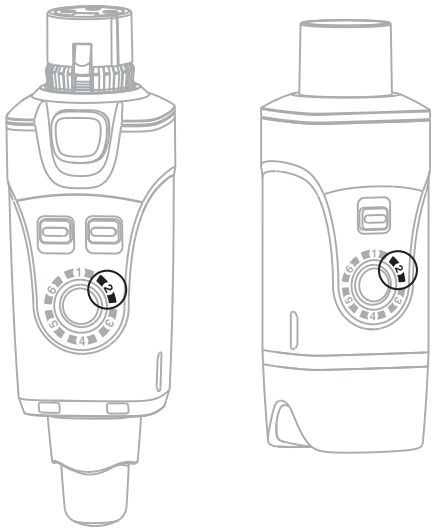


2. Plug the U35 Receiver into the desired XLR input of your mixer.  
\* The Receiver features a protection circuit that protects it if phantom power from the mixer/interface is accidentally turned on

---

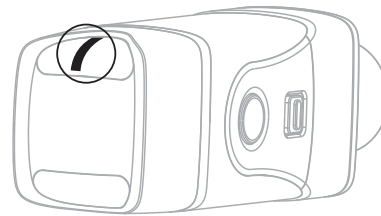
## QUICK START

---



3. Turn on the U35C Transmitter and Receiver and make sure they are set to the same channel.

\* One Transmitter can be connected to two or more Receivers set to the same channel



4. Once successfully connected, the LED lights on the U35 Receiver will illuminate.

\* The U35 Receiver can only be paired with one Transmitter at a time.

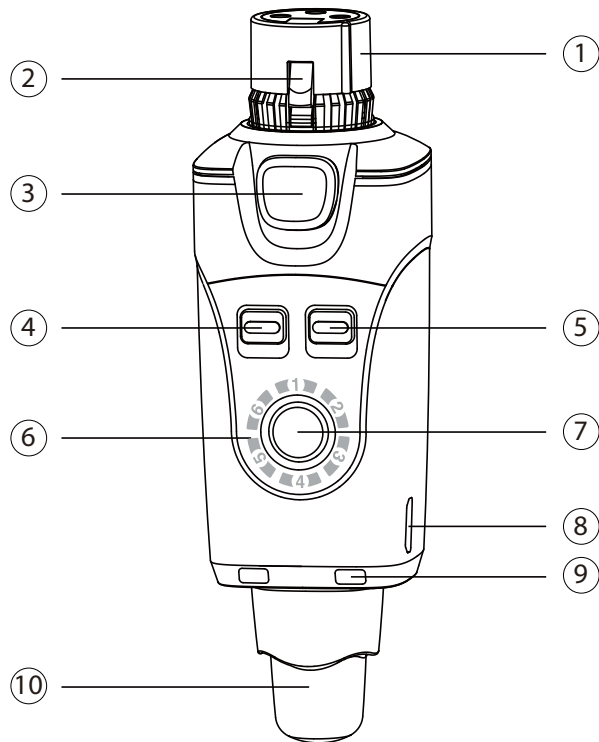


5. Check the connection by talking into the microphone.

---

## OVERVIEW: U35C TRANSMITTER

---

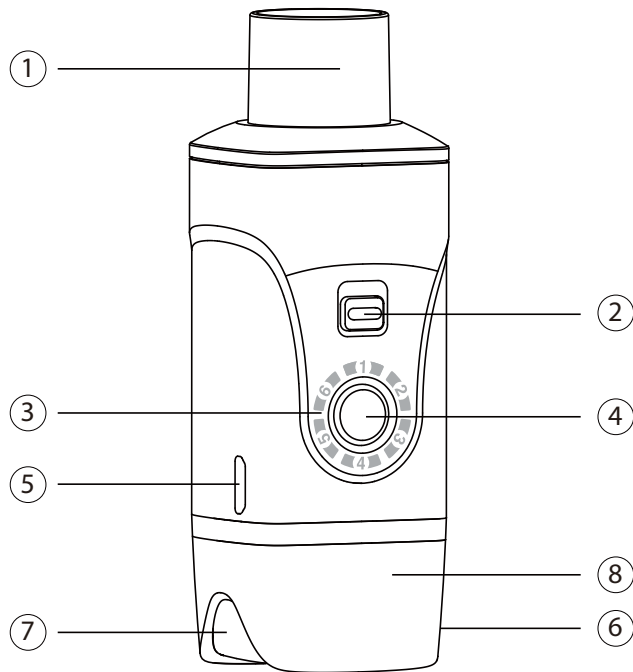


- ① Mic In: XLR balanced condenser microphone input jack
- ② Spring: Circumferential ground spring providing an accurate connection to the mating shell
- ③ Mic Lock: secures Transmitter to the microphone
- ④ Output phantom power voltage switching: 12V and 48V
- ⑤ Power switch: switches unit on/off
- ⑥ Channel status LED: indicates selected channel
- ⑦ Channel switch: selects Channels 1-6
- ⑧ USB charging port
- ⑨ Power status LED, indicating battery charge percentage:
  - LED off = 100% ~ 30%
  - Solid red = 29% ~ 11%
  - Flickering red = less than 10%
- ⑩ Antenna

---

## OVERVIEW: U35 RECEIVER

---



- ① XLR OUT: XLR microphone output jack
- ② Power switch: switches the unit on and off
- ③ Channel status LED: indicates selected channel
- ④ Channel switch: selects Channels 1-6
- ⑤ USB Port: For charging the battery
- ⑥ RF Status LED:
  - ON = Transmitter is on and link is established
  - Flashing = Signal connection interference
  - OFF = Transmitter off or unlinked
- ⑦ Power status LED, indicating battery charge percentage:
  - LED off = 100% ~ 30%
  - Solid red = 29% ~ 11%
  - Flickering red = less than 10%
- ⑧ Antenna

---

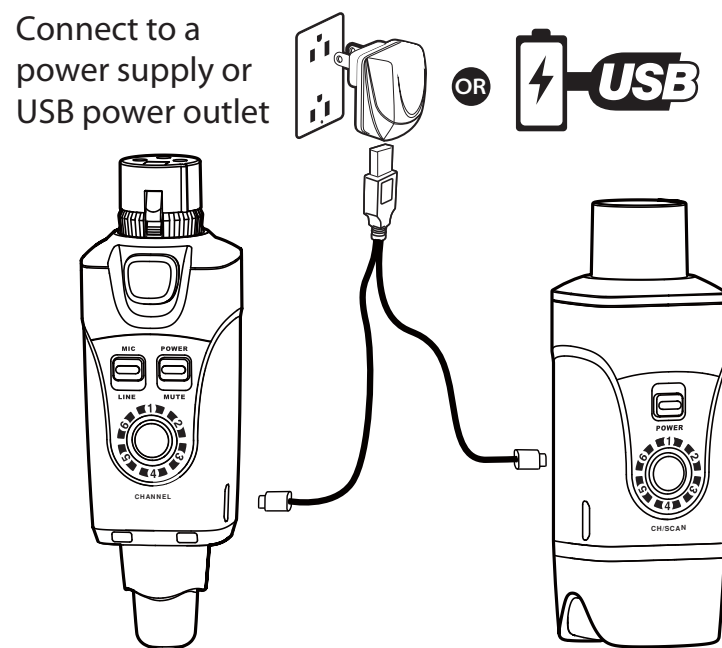
## BATTERIES AND CHARGING

---

### BATTERIES AND CHARGING

The U35C system comes with a dual USB charging cable, which charges the Transmitter and the Receiver at the same time. Plug it into any 5V / 2A USB charger adapter or USB power source.

**Note:** Turn off the power while charging. Please do not use U35C while charging, as this may reduce battery life.



### LED INDICATIONS POWER STATUS

Green (solid):	41-100%
Yellow (solid):	6%-40%
Red (solid):	1%-5%
Red (blinking):	<1%

CHARGING TIMES	BATTERY LIFE
2:30	48V, 3-6 hours
	12V, 7 hours

- \* When the battery level is below 1%, the RF wireless section will turn off. The red power LED will flash until the battery is completely drained.
- \* When the red light is on, the battery is low and charging is required.
- \* Always store at room temperature.
- \* When storing the unit, please check the battery charge level regularly and charge if necessary.

---

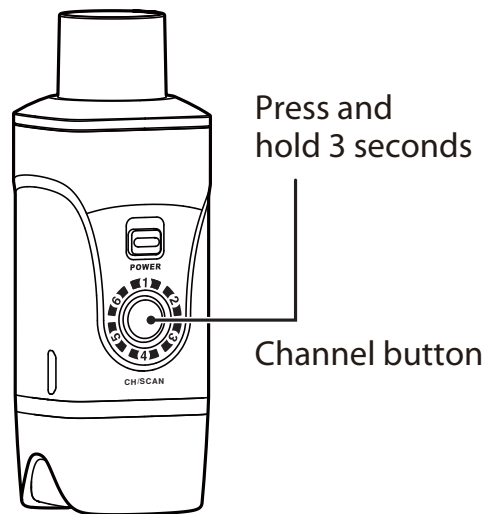
## SCAN FOR THE BEST CHANNEL

---

Press and hold the channel button on the Receiver for 3 seconds to enter Channel Scan mode. The Receiver's channel LED will flash during scanning and then will stay on the optimal wireless channel.

When scanning is complete, manually set the Transmitter's channel to be the same as the Receiver's channel.

\*Before starting the scan, please turn off the power on the Transmitter to be paired, to prevent its wireless signal from interfering with the scan.

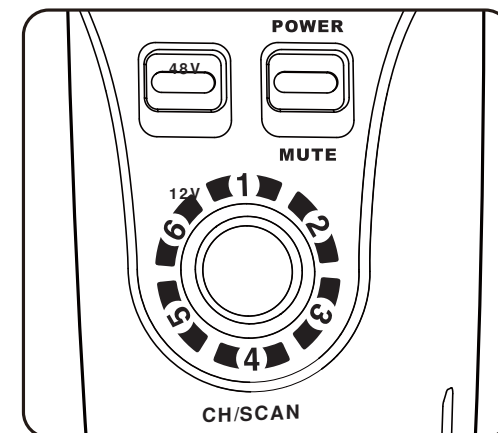


---

## 12V OR 48V PHANTOM POWER

---

U35C offers two phantom power options: 12V and 48V. Using 48V mode provides optimal performance for most condenser microphones, with a battery life of approximately 3 hours. Switching to 12V mode can significantly extend battery life, offering up to 7 hours of usage, but the microphone's performance may be affected. If possible, check the phantom power requirement for your condenser microphone and set the U35C Transmitter accordingly.



---

## 5.8 GHZ WIRELESS OVERVIEW AND INTERFERENCE

---

### Tips for improving wireless system performance:

- 1) Keep more than 3 metres of distance between the U35 Receiver unit and Wi-Fi transmitters, such as routers.
- 2) If you experience interference from Wi-Fi devices in the vicinity, try changing to a different channel on the U35C Transmitter and Receiver.
- 3) If necessary, shorten the distance between the Transmitter and Receiver units.

#### INT Version: 5.8 GHz Frequency Tables

CHANNEL 1	5730 MHz, 5842 MHz, 5844 MHz
CHANNEL 2	5736 MHz, 5833 MHz, 5835 MHz
CHANNEL 3	5742 MHz, 5827 MHz, 5829 MHz
CHANNEL 4	5756 MHz, 5803 MHz, 5805 MHz
CHANNEL 5	5785 MHz, 5811 MHz, 5813 MHz
CHANNEL 6	5780 MHz, 5791 MHz, 5797 MHz

#### KOREA Version: 5.8 GHz Frequency Tables

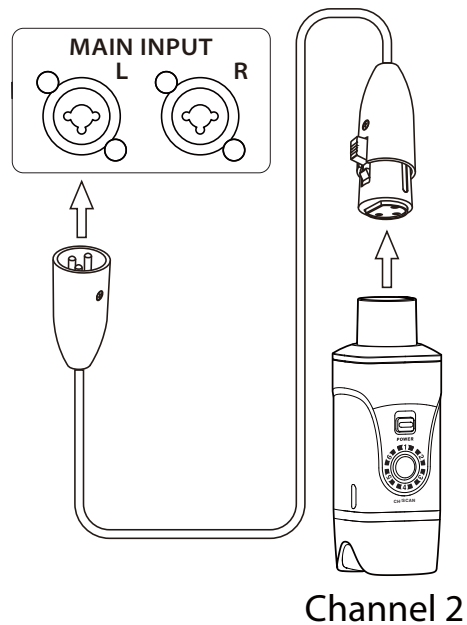
CHANNEL 1	5729 MHz, 5819 MHz, 5821 MHz
CHANNEL 2	5735 MHz, 5811 MHz, 5813 MHz
CHANNEL 3	5743 MHz, 5801 MHz, 5803 MHz
CHANNEL 4	5750 MHz, 5792 MHz, 5794 MHz
CHANNEL 5	5753 MHz, 5781 MHz, 5784 MHz
CHANNEL 6	5766 MHz, 5772 MHz, 5775 MHz

\* Up to six U35C sets can be used simultaneously in one area

---

## EXTEND THE EFFECTIVE RANGE

---

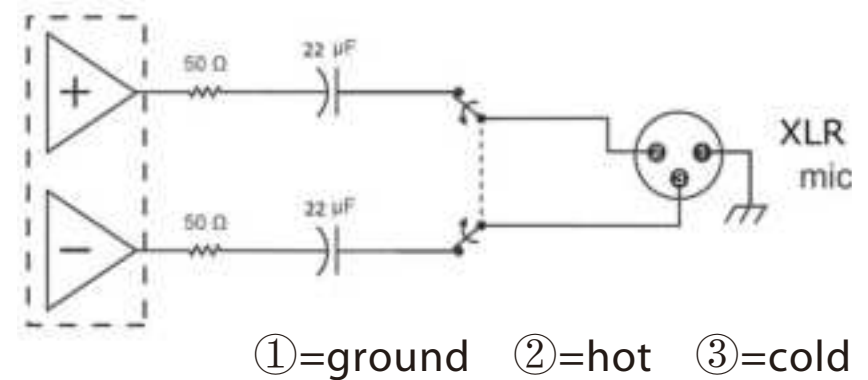


Using an XLR cable (not included) as an extension for a Receiver allows you to connect the components to a mixer where the inputs are very close together. It can also resolve wireless signal interference issues if you have too many wireless units in the area.

---

## U35C PHANTOM POWER CONNECTIONS

---



---

## SPECIFICATIONS

---

### U35C MICROPHONE WIRELESS SYSTEM

Tuning bandwidth	Int: 5730-5844 MHz; Korea: 5729-5821 MHz
Working range	Up to 100 ft (actual range depends on RF signal absorption, reflection and interference)
Frequency response	20 Hz – 20 kHz (-3dB) (dependent on microphone type)
Signal-to-noise ratio	110 dB
Battery life	3–7 hours of battery life, depending on the microphone's phantom power current draw
RF sensitivity	-88 dBm
Total harmonic distortion	0.2%
RF output power	25 mW E.I.R.P. max
Operating temperature range	0°C to 45°C (battery characteristics may limit this range)
Sampling rate	24-bit / 48 kHz audio
Channel count	6

---

	U35C TRANSMITTER	U35 RECEIVER
Dimensions	31 x 29 x 98 mm	31 X 29 X 81 mm
Weight	108 g	92 g
Housing	Molded plastic and cast metal	Molded plastic and cast metal
Battery	3.7V rechargeable Li-ion, 1000 mA	3.7V rechargeable Li-ion, 860 mA
Impedance	Input: 470 k $\Omega$ (1 kHz)	Output: 470 $\Omega$ (1 kHz)
Audio input connector	Balanced XLR male	
Audio output connector		Balanced XLR female
Maximum input level	2.8 Vp-p	
Maximum output level		2.8 Vp-p
Battery life	Phantom power: 12V 2mA – 7 hours 48V 2mA – 6 hours 48V 8mA – 3 hours	Up to 5 hours
Microphone type	Condenser	
Antenna impedance	50 $\Omega$	50 $\Omega$
Antenna type	1/4 wave sleeve dipole, non-removable	1/4 wave sleeve dipole, non-removable
Number of antennas	1	2

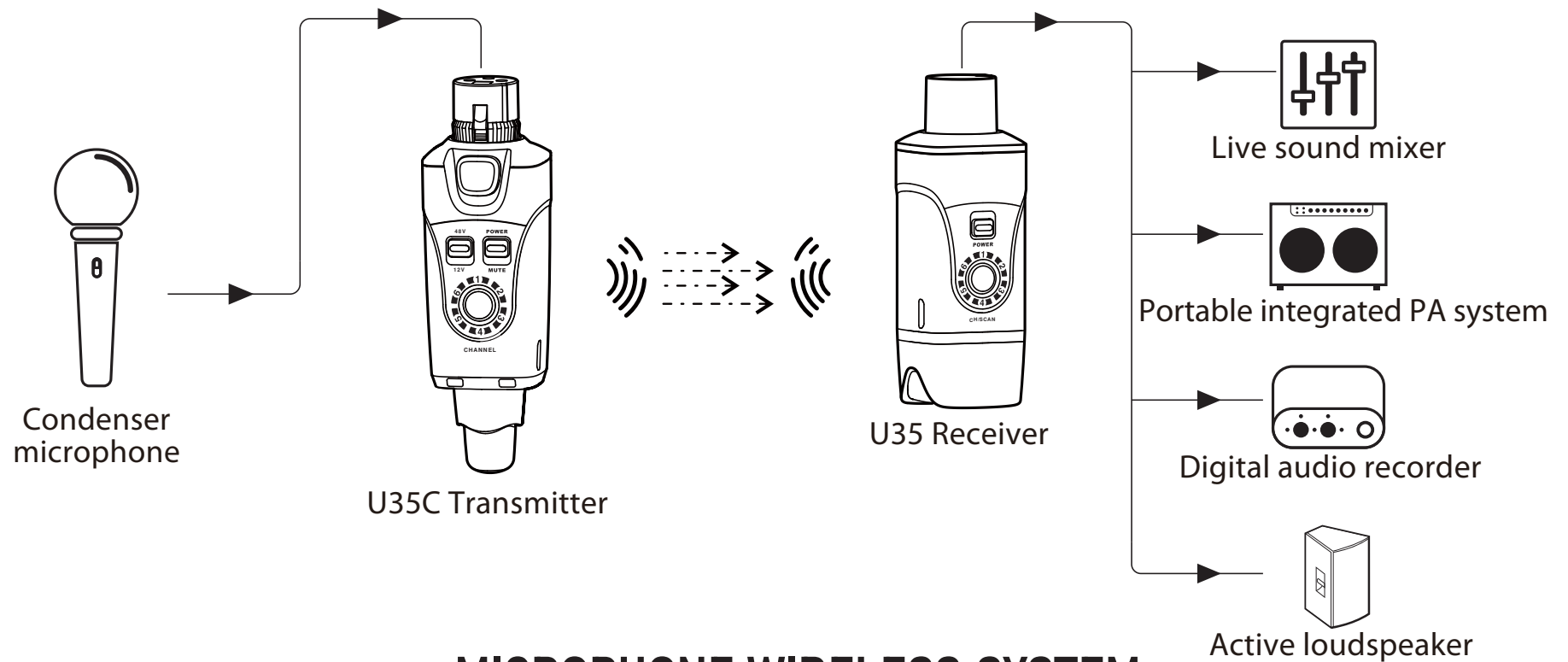
---

## TROUBLESHOOTING

---

ISSUE	SOLUTION
No sound	<ul style="list-style-type: none"><li>• Check that the Receiver's RF LED is illuminated</li><li>• Check that the power switches on both the Transmitter and the Receiver are turned on.</li><li>• Ensure that the U35C Transmitter and Receiver are on the same channel.</li><li>• U35C will provide 12V or 48V phantom power to a condenser microphone. Please select the correct voltage for your microphone.</li></ul> <p>* When the battery level is below 1%, the RF wireless section will turn off. The red power LED will flash until the battery is completely drained.</p>
Distortion or faint sound	<ul style="list-style-type: none"><li>• Check that the Receiver is connected to a balanced XLR input.</li></ul>
Signal instability: RF LED flickering, or off completely	<ul style="list-style-type: none"><li>• See, "Tips for improving wireless system performance" on page 15</li></ul>
Unable to switch the channel	<ul style="list-style-type: none"><li>• The channel switch locks after 15 seconds. Double-click the channel button to unlock and reset.</li></ul>
Phantom power	<ul style="list-style-type: none"><li>• Never plug single-ended (unbalanced) or ribbon microphones into U35C Transmitter, as they can be permanently damaged if phantom power is applied to them.</li></ul>

## APPLICATION OVERVIEW



**U35C** **MICROPHONE WIRELESS SYSTEM**  
For Condenser Microphones