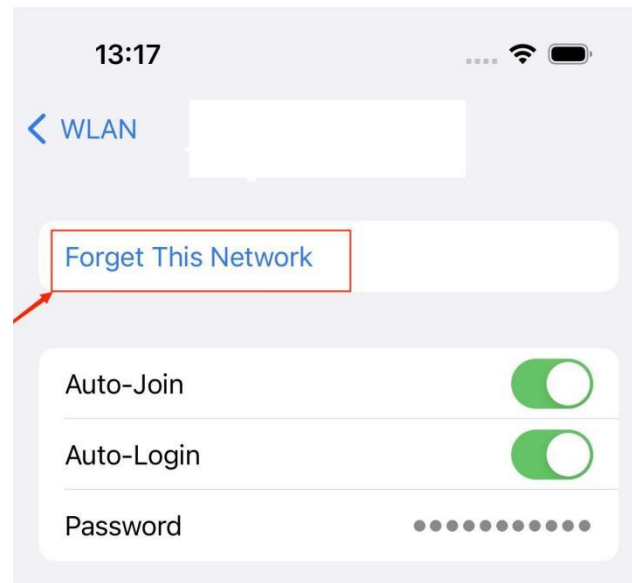


For iPhone:

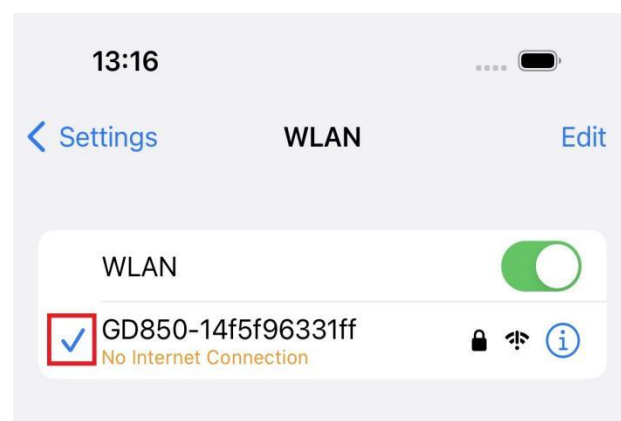
Please download and install “iZEEKER Tour” APP through App Store.

Please note that GD850's WiFi can only connect to one mobile device at the same time.

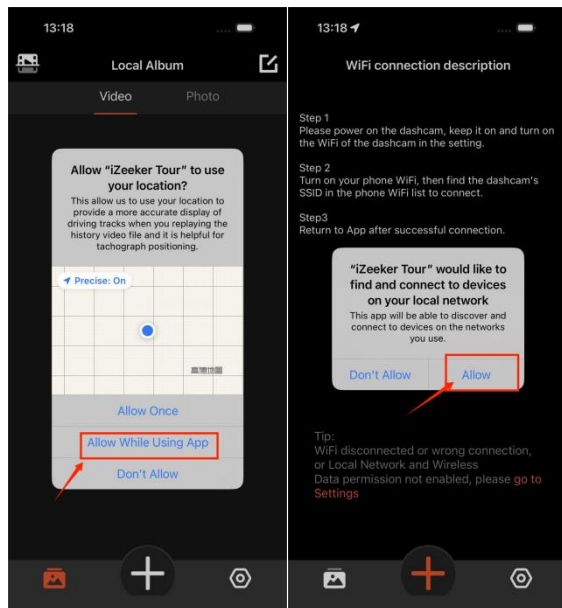
Firstly, when connecting to Dash Cam's WiFi, please turn off "Cellular" and forget or stay away from your commonly used home network in the WLAN settings. Due to the strong signal of the home WiFi, it can affect the connection of the phone to the dash cam WiFi and cause disconnection issues in the future.



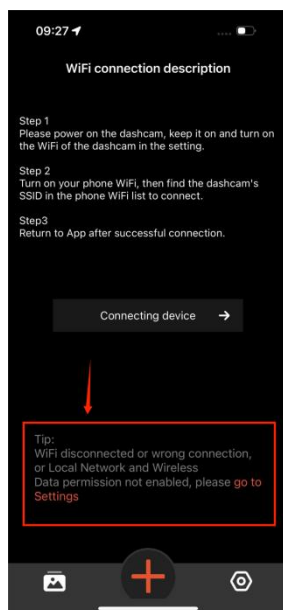
Please note that for iPhone, it will display or show 'No Internet Connection', which is normal and you can ignore this message. As the GD850 dash cam does not provide the internet, so the iPhone will show this message. You are only making a connection between your iPhone and GD850 using the WiFi. Once you see this Blue Check Mark, you are connected to the GD850 WiFi. You can simply proceed to open the "iZEEKER Tour" APP at this point.

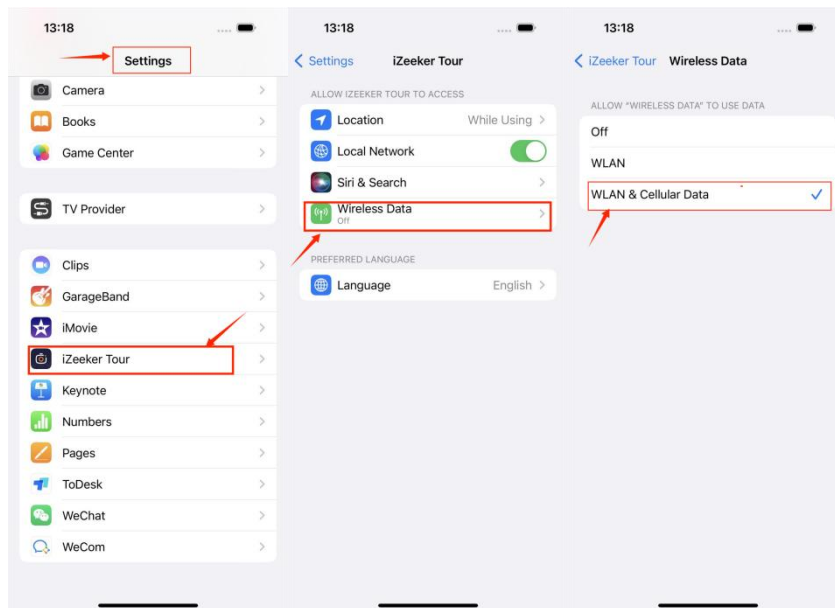


Secondly, after successfully connecting to WiFi, when you open the APP for the first time, in order to ensure the normal use of subsequent functions, please allow to open the location and network permissions, as shown in the image below:

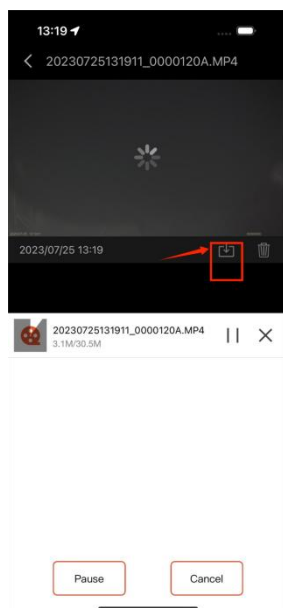


Please note that if the APP shows that it cannot be connected normally, as shown in the image below, please go to the phone settings to set the network.





Finally, because the 2.4G WiFi currently used by the GD850 dash cam is recommended to be used for machine control or small file download connections such as pictures, it is recommended to use a card transfer or USB transfer for large video files.

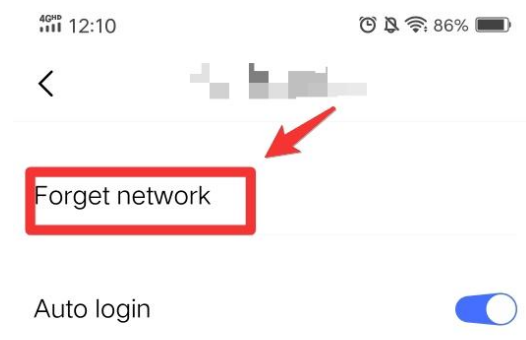


For Android Phones:

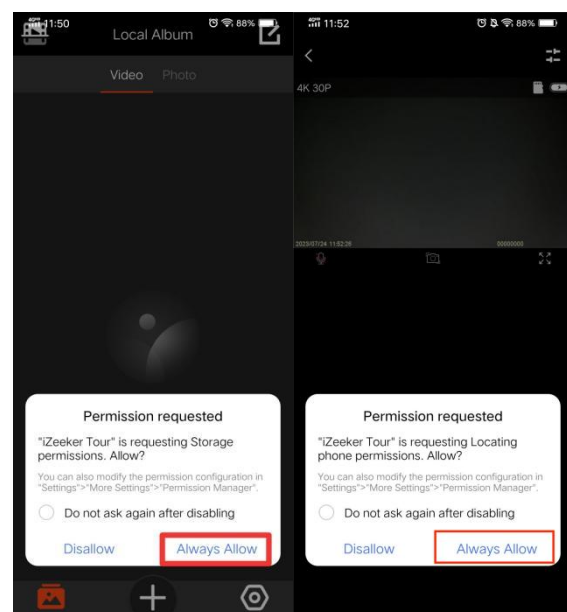
Please download and install “iZEEKER Tour” APP through Google Play.

Please note that GD850's WiFi can only connect to one mobile device at the same time.

Firstly, when connecting to Dash Cam's WiFi, please turn off "Mobile network" and forget or stay away from your commonly used home network in the WLAN settings. Due to the strong signal of the home WiFi, it can affect the connection of the phone to the dash cam WiFi and cause disconnection issues.



Secondly, after successfully connecting to WiFi, when opening the app for the first time, in order to ensure the normal use of subsequent functions, please allow the opening location and storage permissions, as shown in the following figure:



Finally, because the 2.4G Wi-Fi currently used in the GD850 dash cam is recommended for dash cam control or small file download connections such as images, it is recommended to use an SD card reader or USB transfer for large video files; When you connect to WiFi on your phone to play back videos, to avoid getting stuck, we suggest that you download them first and then watch them.



If the above steps cannot be well pointed out to you, please via the “support@izeeker.co” contact us and we will provide you with specialized after-sales service personnel for guidance.