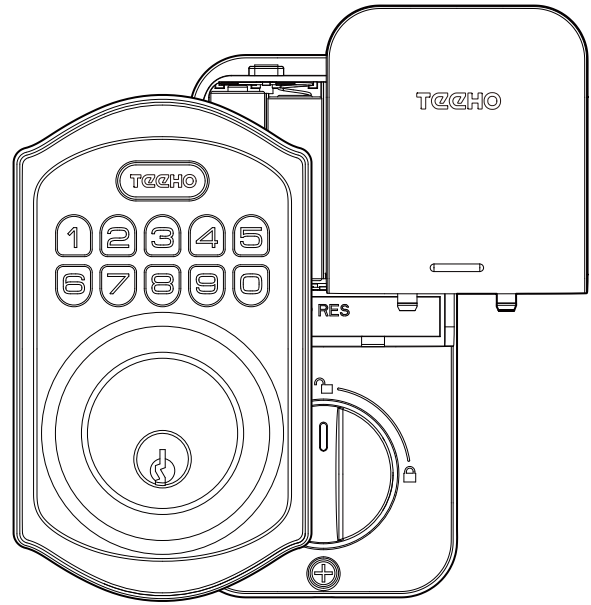
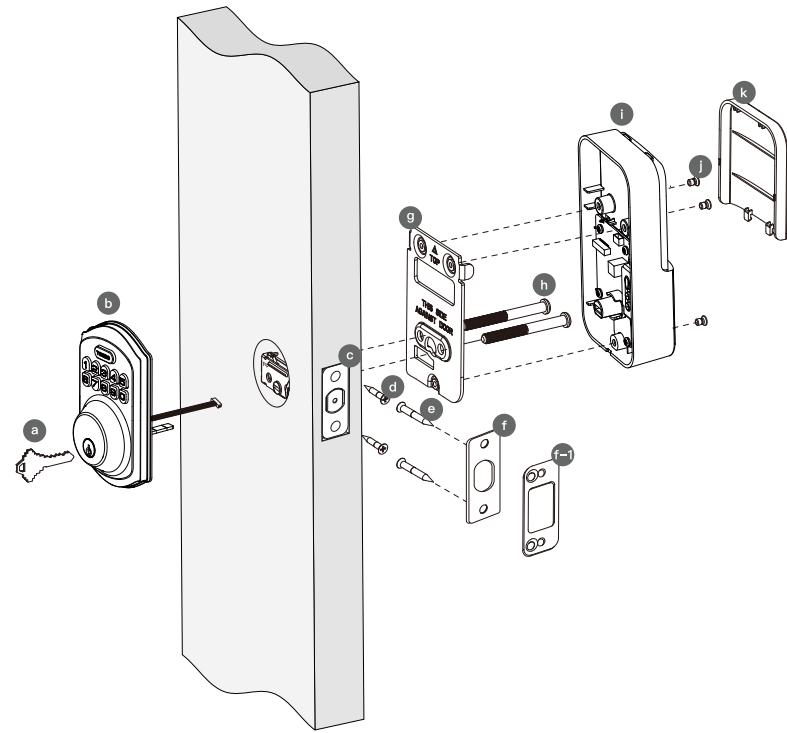


TECHO

Installation Instructions

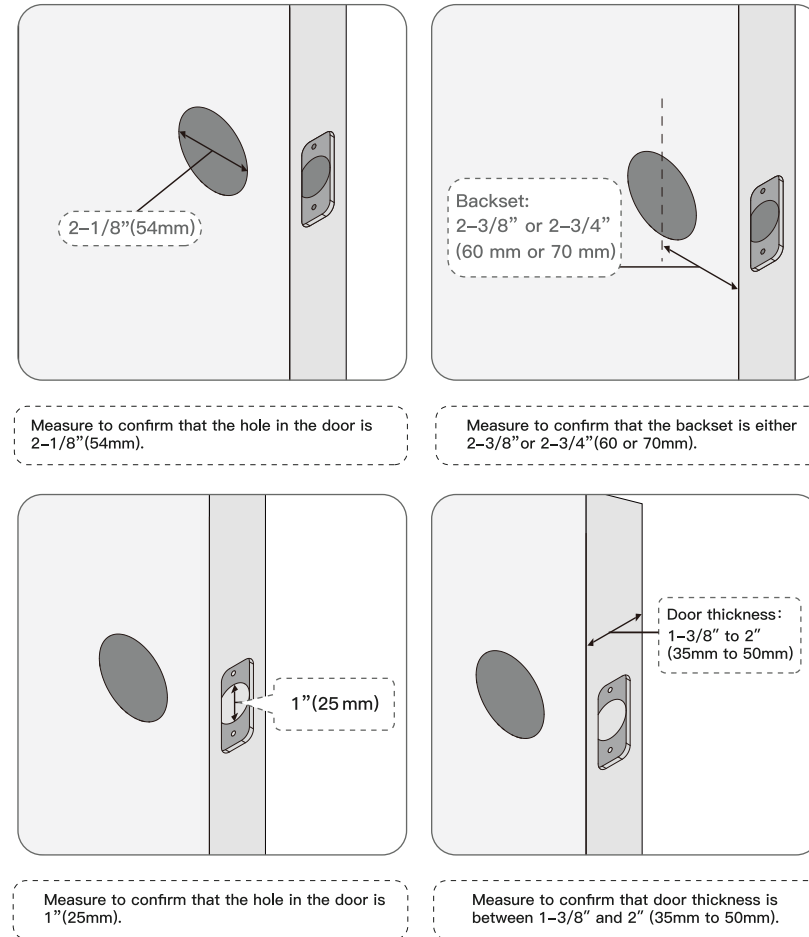


Parts List:

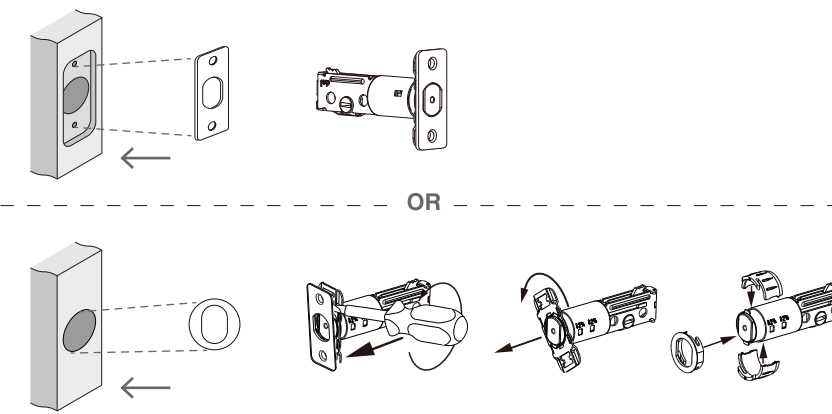


The details of part identification is shown on following page

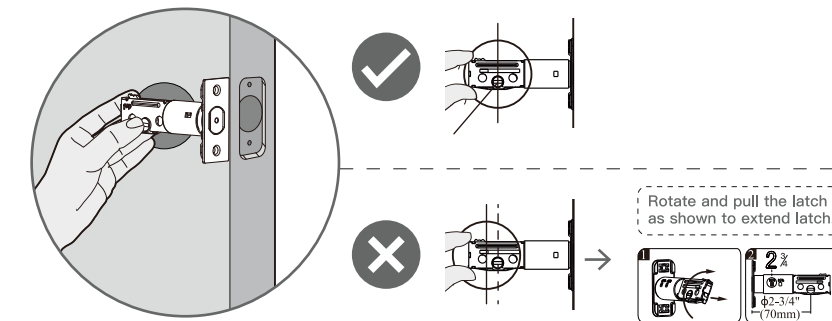
1. Prepare the door and check dimensions



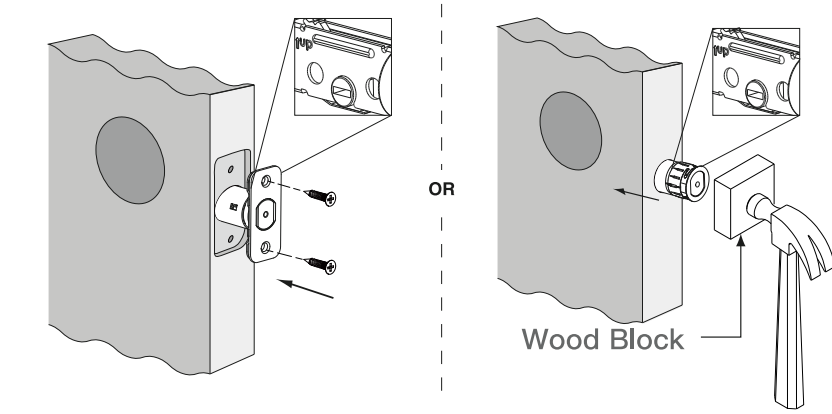
2. Choose faceplate



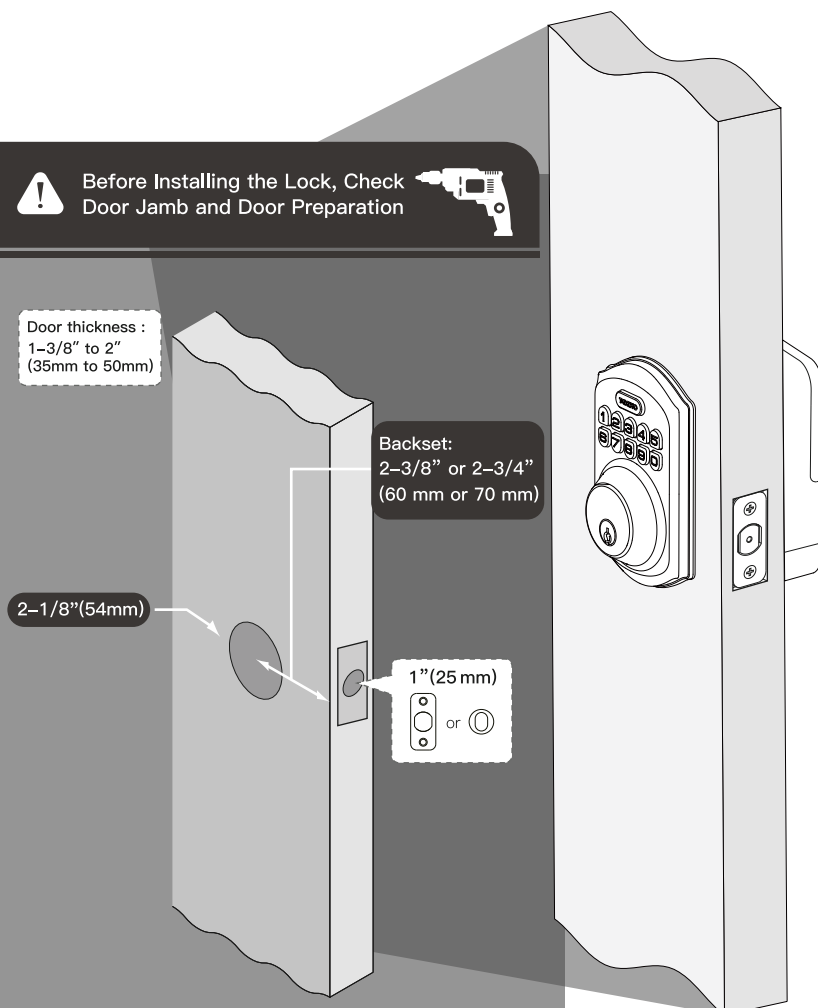
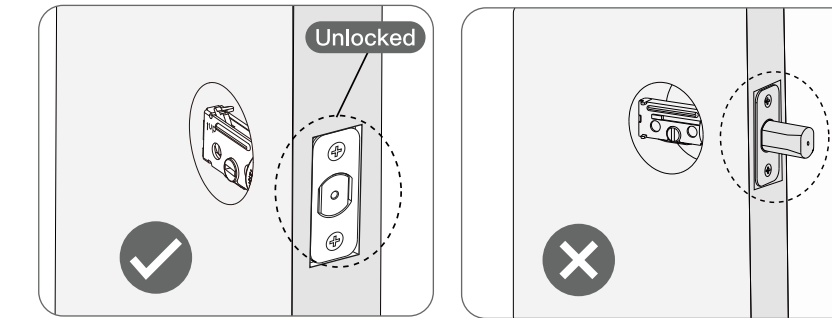
Is the slotted hole centered in the door hole?



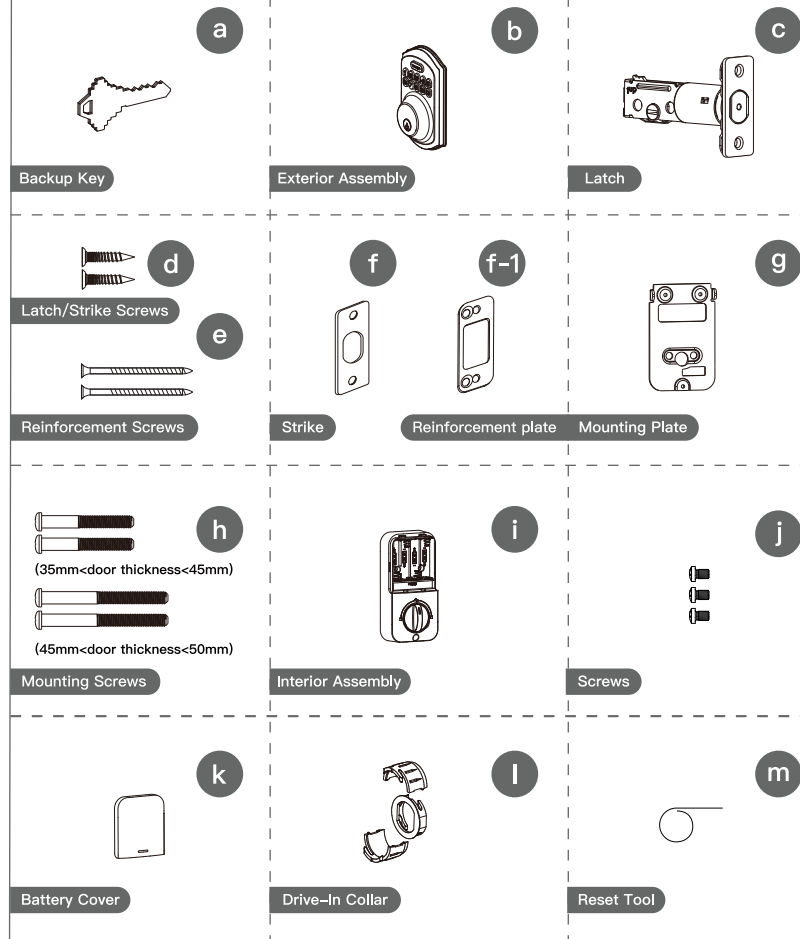
3. Install latch and deadbolt



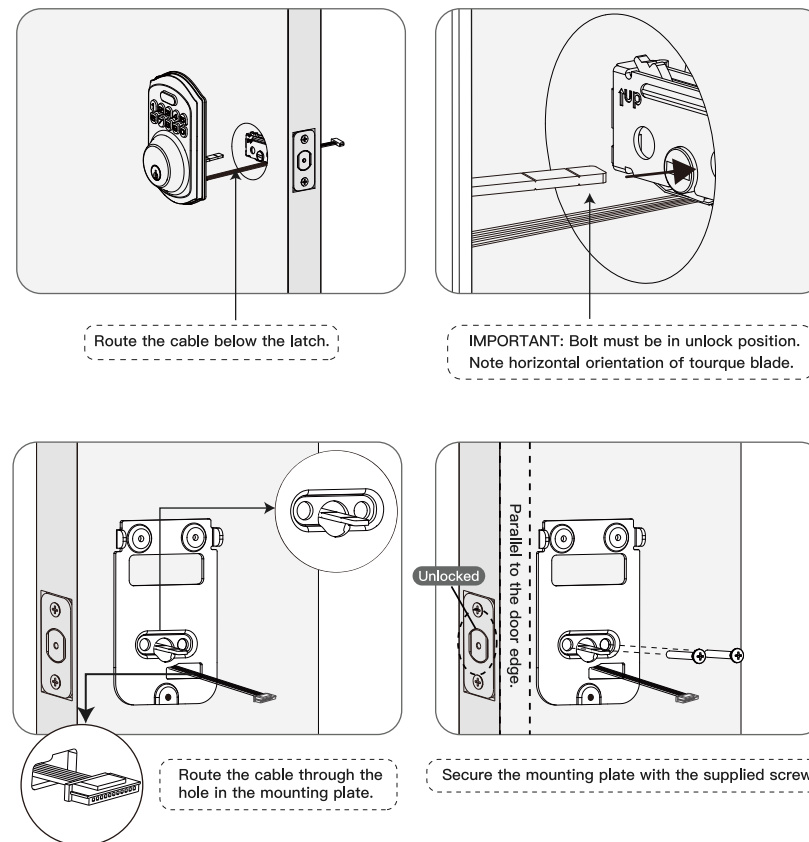
⚠ IMPORTANT: Keep the latch in unlocked position before installation.



Parts identification

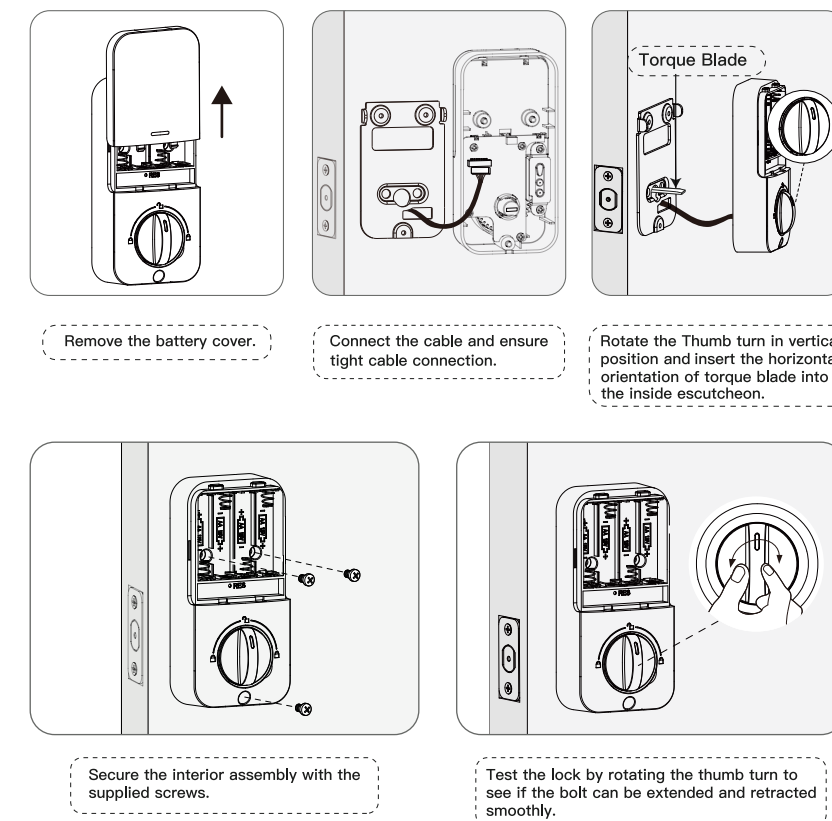


4. Install exterior assembly



5. Install interior assembly

⚠ Do not load batteries until lock is completely installed.



6. Detect left/right hand door installation

⚠ IMPORTANT: This step is required and crucial for the lock after installation!

