

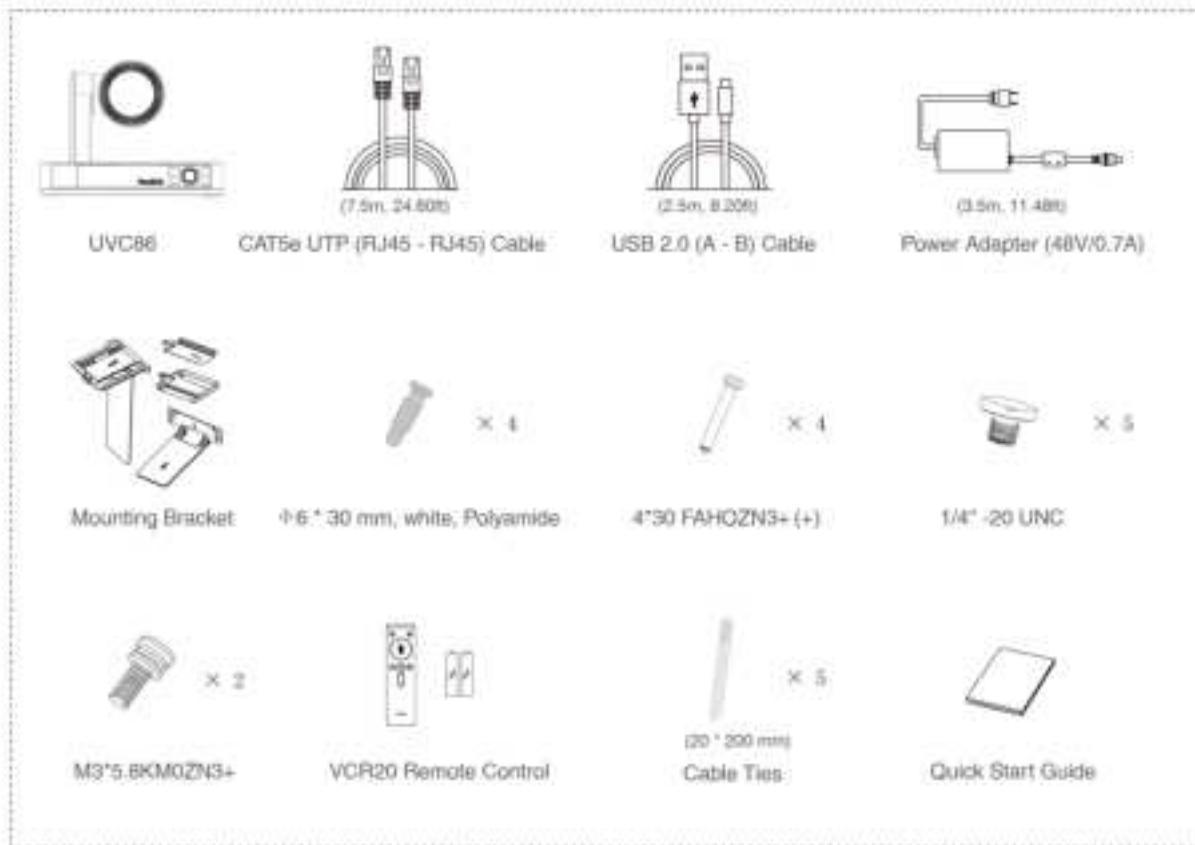
MVC860-C5-713

For the operation video, please refer to [MVC860-C5-713 Unboxing](#).

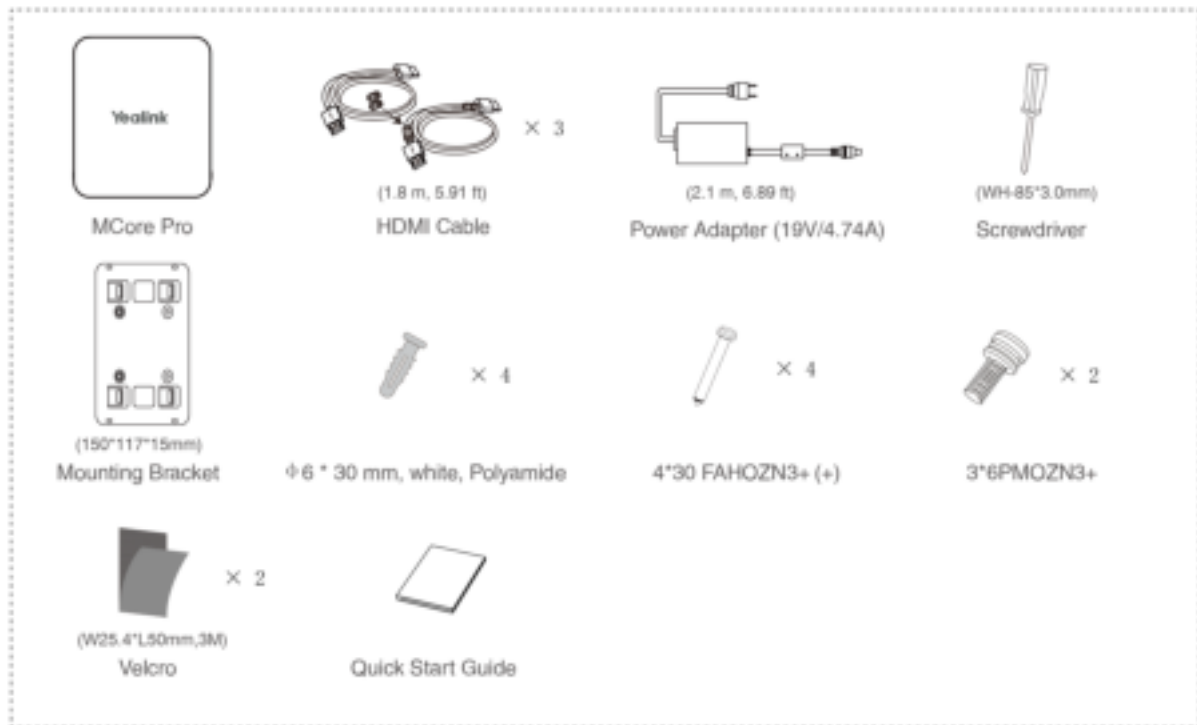
Requirements

- A display connected to MCore Pro (not included).
- A Microsoft Teams Rooms or Skype® for Business account (not included).
- Wired network environment (not included).

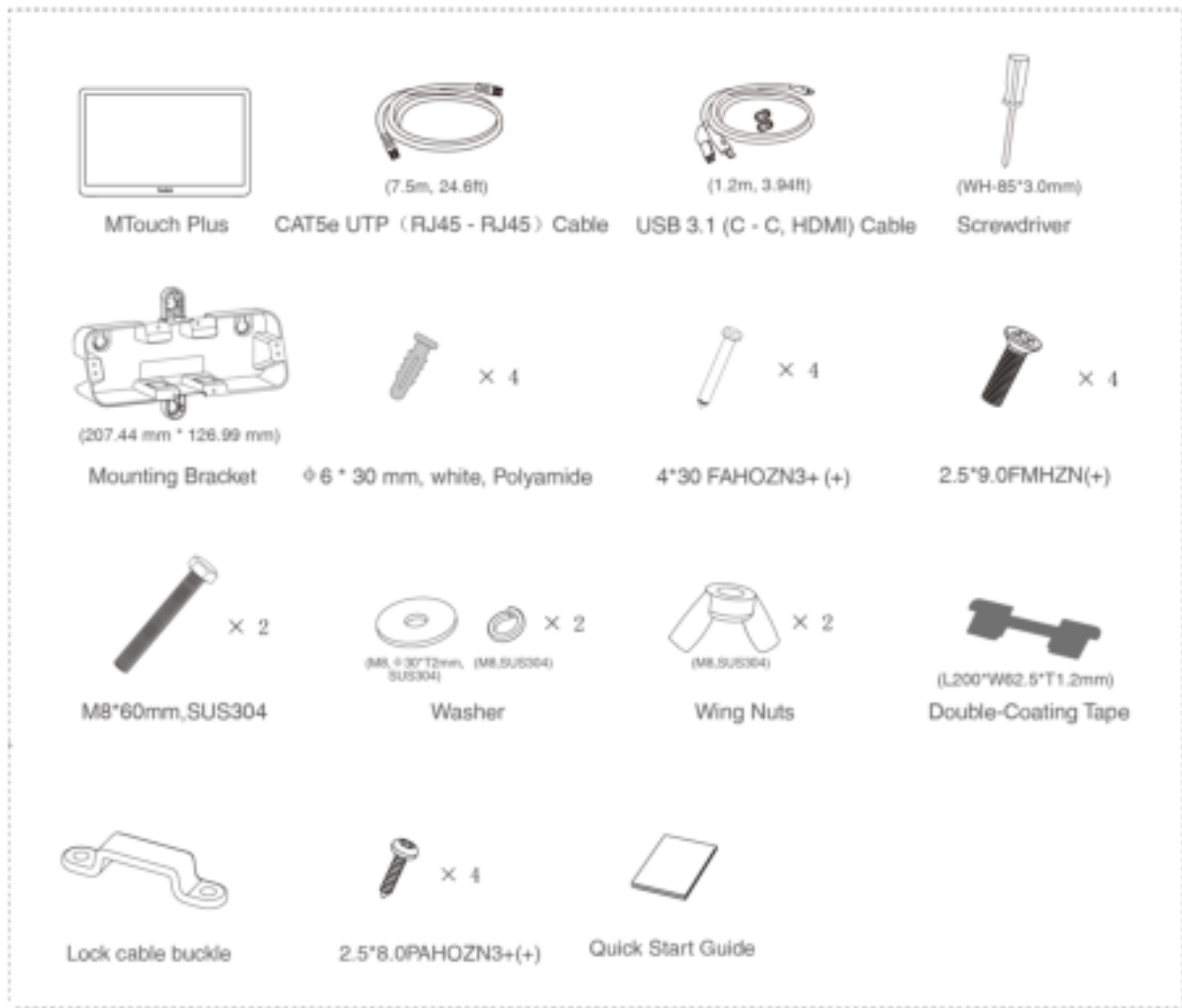
Package Contents



UVC86 Package



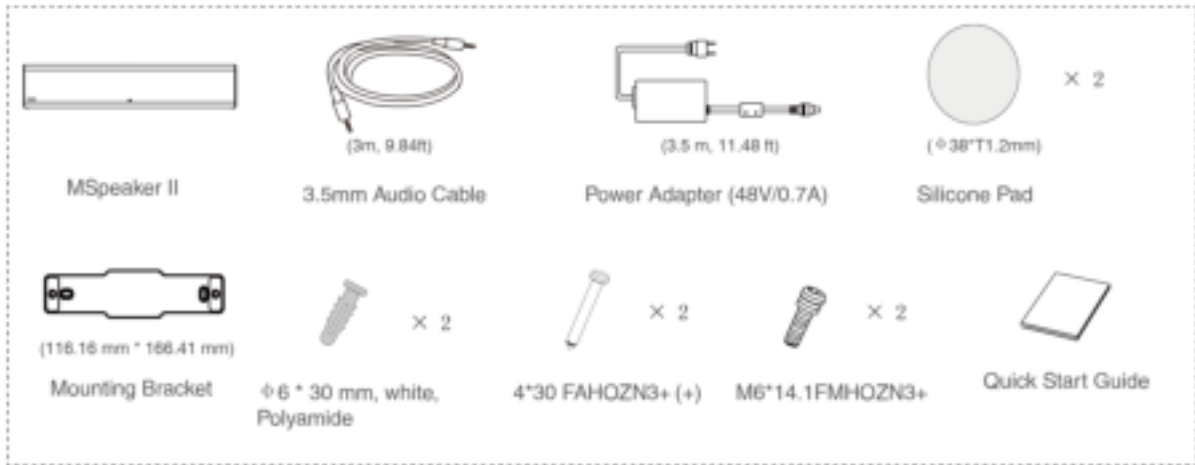
MCore Pro Package



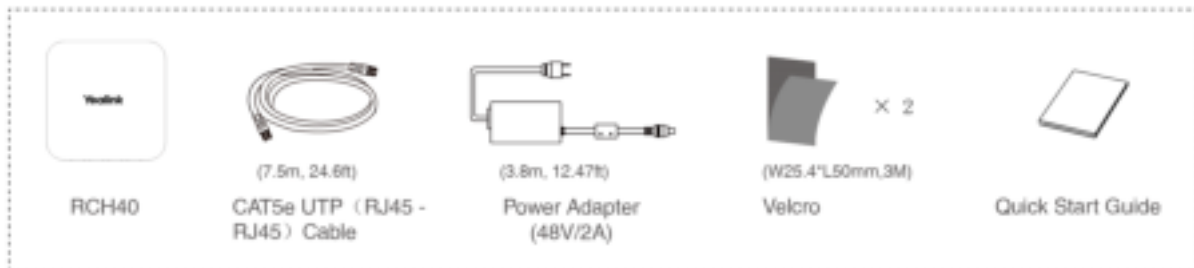
MTouch Plus Package



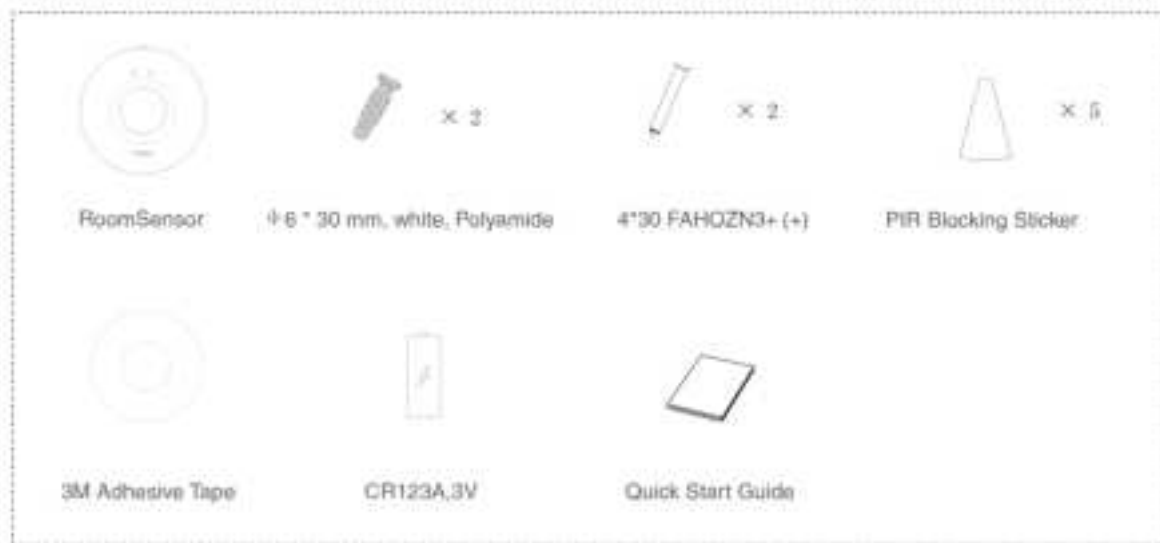
VCM35 Package*2



MSpeaker II Package



RCH40 Package

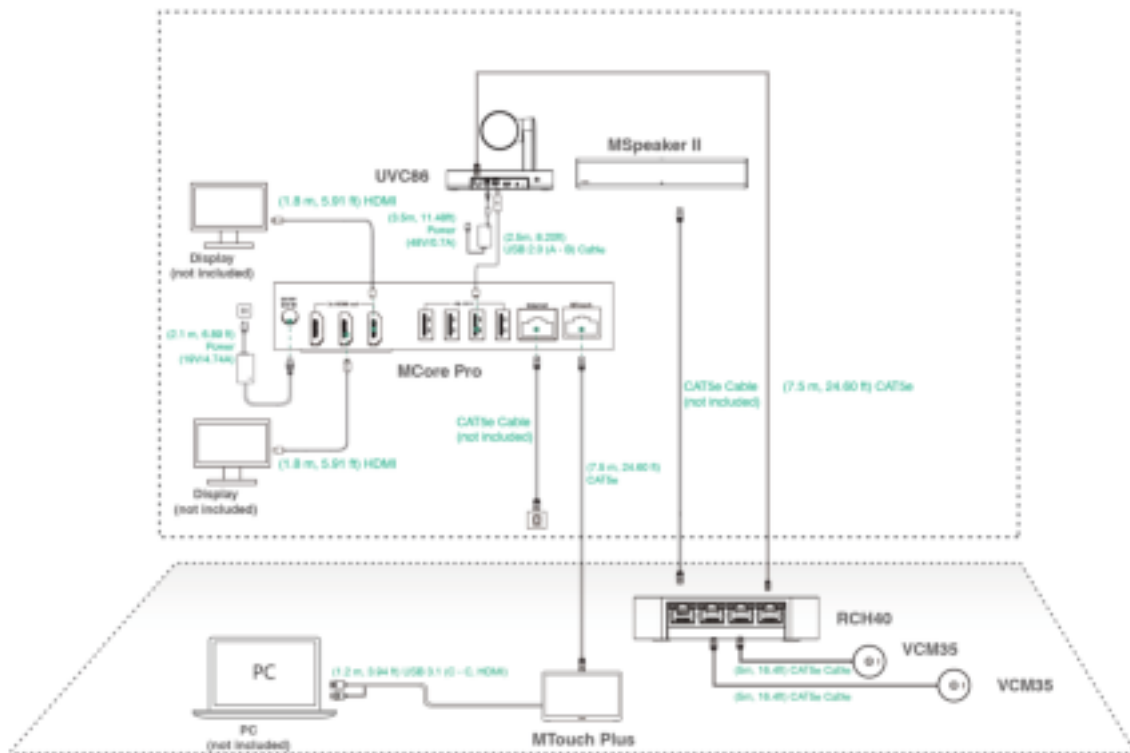


RoomSensor Package

Install MVC860-C5-713

- **MCore Pro** supports: wall mounting, TV mounting, or placement on a table.
- **MTouch Plus** supports: placement on a table, adhesion to a table, or wall mounting.
- **UVC86** supports: placement on a flat surface, mounting on top of a display, wall mounting, ceiling mounting, or TV mounting.
- **MSpeaker II** supports: wall mounting or placement on a table.
- **RCH40** supports: table placement, under-table adhesion, or side-of-table adhesion.
- **RoomSensor** supports: ceiling or wall mounting.
- Install and deploy the system accessories according to your environment and actual needs. For installation and deployment instructions, please refer to the quick start guide for each product.

Connect MVC860-C5-713



NOTE

- When starting the system for the first time, you need to connect a mouse to complete the initial configuration. We recommend using a wireless mouse and keyboard kit.
- The maximum cable connection distance from MCore Pro to the MTouch Plus/E2 is 40m/131ft and cannot be extended.
- **Not included accessories:**
 - **Display:** Must have a resolution of 1080p or higher and an HDMI port.
 - **PC:** Must be equipped with an HDMI or USB-C port (supporting DP protocol).
 - **Ethernet cable:** CAT5e or higher.
 - **HDMI cable:** Standard HDMI cable.
 - **PoE switch:** Required if using PoE to connect speakers or cameras (PoE+ required).
- A **USB-C cable** with DisplayPort standard is recommended for MTouch Plus/E2 content sharing. The original content share cable in the MVC kits can also be purchased separately.

Supported Accessories

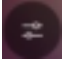
For the compatible devices and the maximum number of compatible devices, please refer to [Teams Room Accessories Compatibility Lists](#).

Initial Setup

When the hardware deployment and connections are completed, you need to set up your Microsoft Teams Room System (MVC) system. Please refer to [Quick Setup](#) for more details.

Features

Control Camera Position

1. Sign in to your MVC system using a Skype for Business or Microsoft Teams account.
2. Tap **More** >  to access the Camera Control page.

Pair with a RoomSensor/RoomSensor Pro

1. [Switch the account from Skype to Admin](#) .
2. Open Yealink RoomConnect Software.
3. Go to **MTouch Plus** > **Device Status** > **Sensor**.
4. Select **Add** and follow the on-screen instructions to pair.

NOTE

- An MTouch Plus can be paired with only one RoomSensor/RoomSensor Pro.
- The distance between the MTouch Plus and RoomSensor/RoomSensor Pro must be within 20m.