

Safety Precautions

WARNING! Read and understand all sections in this guide before installing or operating this product. Failure to heed any of the following WARNINGS may result in electric shock, fire, personal injury and death. Prior to operating this product, the user should read the online help and specifically the warnings in the online help.

WARNING! Connect this product to an AC power source whose voltage is within the range specified on the product's nameplate.

WARNING! Connect this product to an AC power source that is current limited by a suitably rated fuse or circuit breaker in accordance with national and local electrical codes.

WARNING! Use this product in a dry location.

WARNING! Connect this product to a protective earth ground. Never use a "ground lift adaptor" between the product's plug and the wall receptacle.

WARNING! If this product is a model that requires assembly of its line cord or plug, all such assembly must be performed by a licensed electrician and the line cord or plugs used must be suitably rated based on the product's nameplate ratings and national and local electrical codes.

Warning

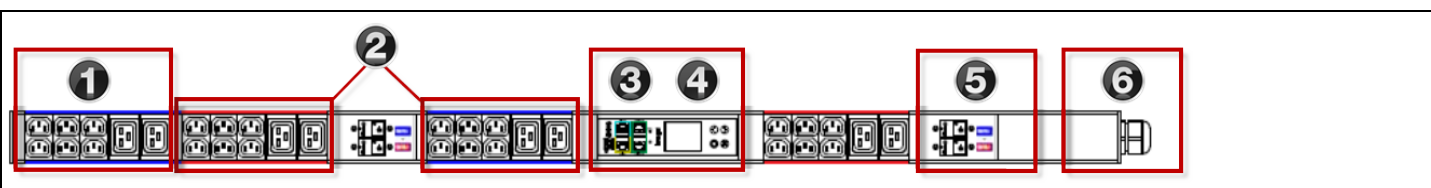
This is a class A product. In a domestic environment this product may cause radio interference in which case the user may be required to take adequate measures.

CAUTION:

To reduce the risk of shock — Use indoors only in a dry location. No user serviceable parts inside. Refer servicing to qualified personnel. For use with IT equipment only. Disconnect power before servicing.

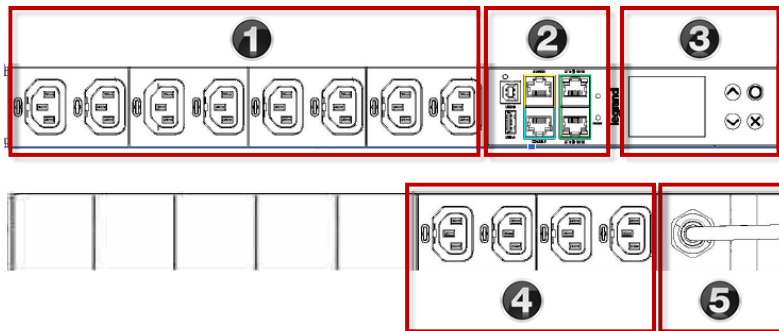


0U PDU Overview



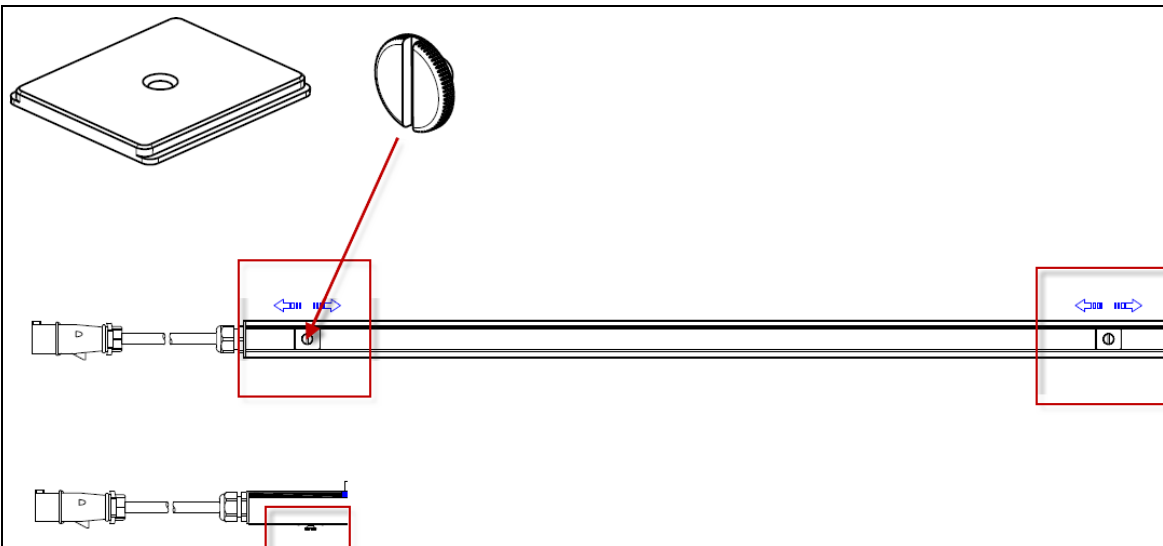
- 1** Outlets
- 2** Circuits
- 3** Controller with Connector Ports: See *Controller* (on page 5).
- 4** Front Panel Display: See *Front Panel Display* (on page 6).
- 5** Circuit Breakers
- 6** Inlet

1U PDU Overview



- 1** Outlets: Front of PDU
- 2** Controller with Connector Ports: See *Controller* (on page 5).
- 3** Front Panel Display: See *Front Panel Display* (on page 6).
- 4** Outlets: Rear of PDU
- 5** Inlet : Rear of PDU

0U Button Mount

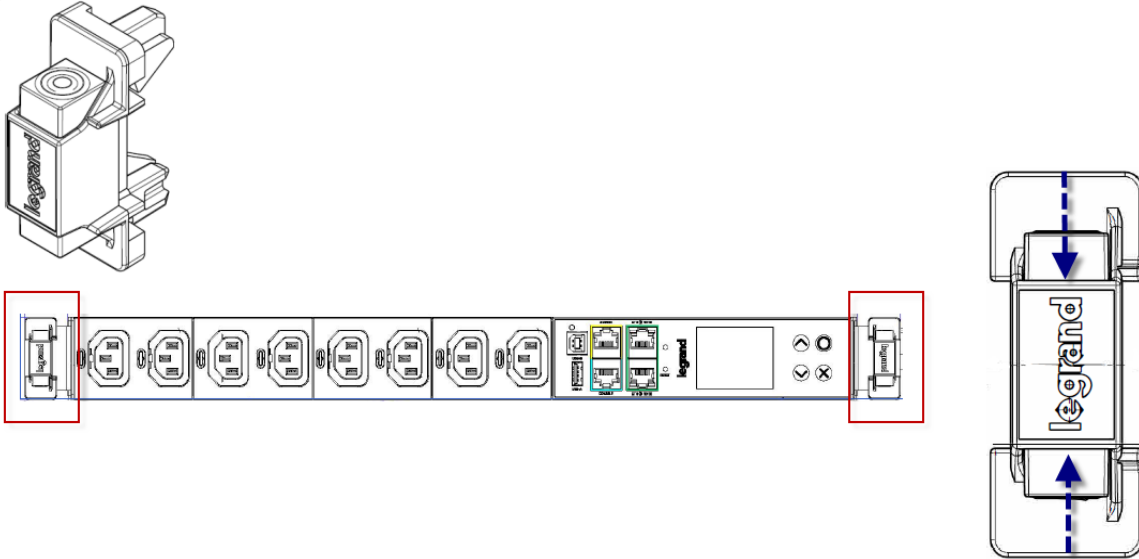


Part Numbers:

- 250-70-0140-00: button (2)
- 250-70-0141-00: bracket (2)

- Slide flat brackets onto rear of 0U model and align over holes at each end.
- Press button into bracket hole and turn with finger.
- Mount by positioning the PDU at the rack, then pressing the buttons through the holes in the cabinet and letting the PDU drop down slightly.

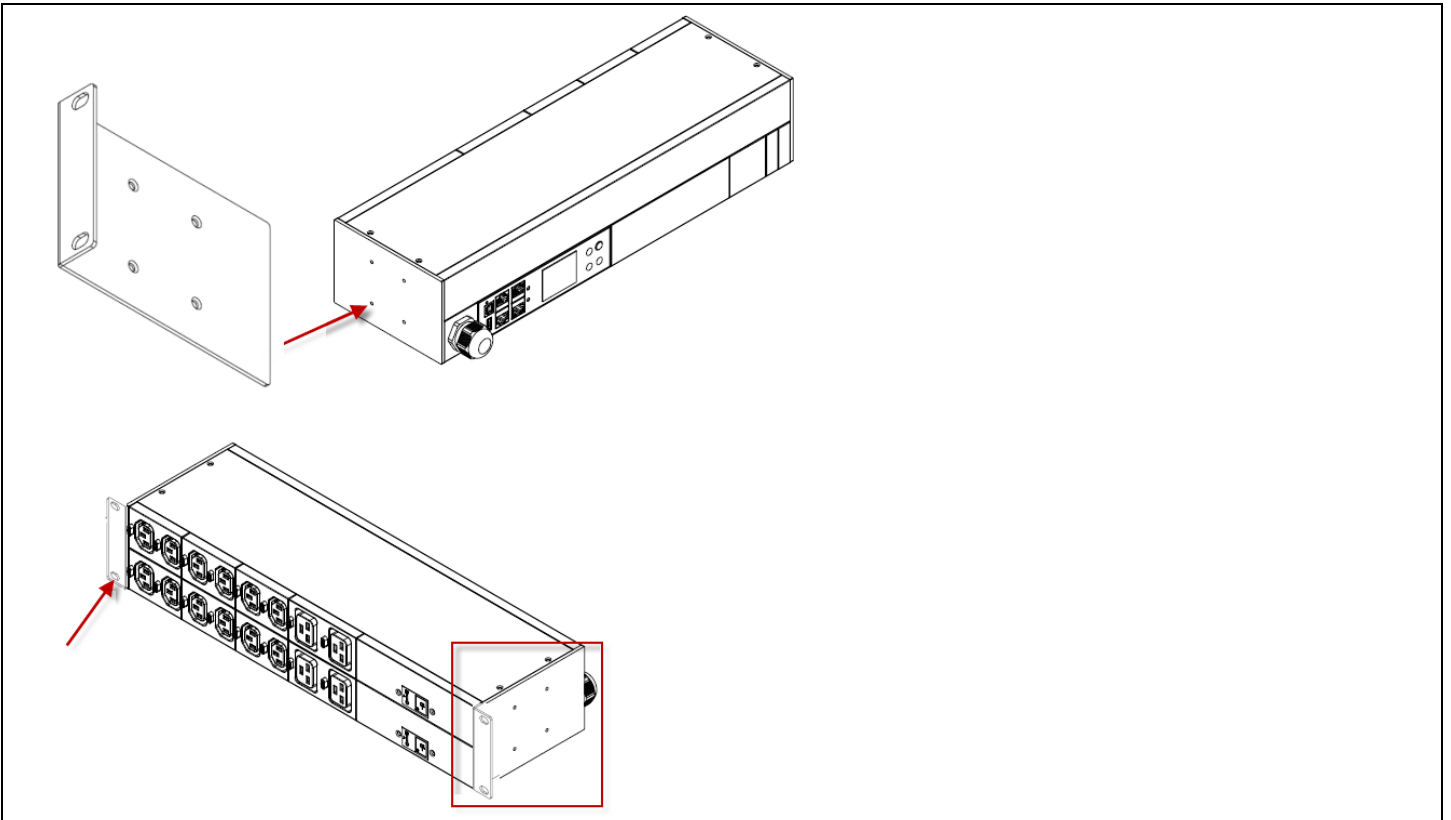
1U/2U Legrand Clip Mount



Parts:

- Legrand Soluclip (2)
 - Brackets (2): 1U or 2U size
- Attach brackets to ends of 1U model with screws, then attach the Soluclip at each end by squeezing the buttons together to insert the hooks through the bracket. Release the buttons when the hooks are in position securely through the bracket.
 - Mount by positioning the PDU at the rack, then tilting the PDU to press the hooks through the holes in the rack. Then set the PDU back to level to engage the hooks.

2U Bracket Mount



Parts:

- Brackets (2) and screws

- Attach the brackets with "ears" facing front to each end of the PDU with 4 screws.
- Mount by positioning the PDU at the rack, then attaching the bracket "ears" to the rack with 2 screws in holes provided on each ear.

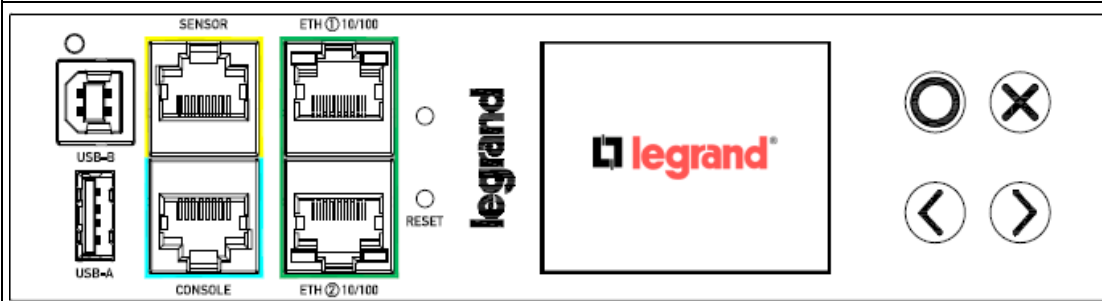
Power On the PDU

- Verify that all circuit breakers on the Legrand PDU device are set to ON. If not, turn them ON.

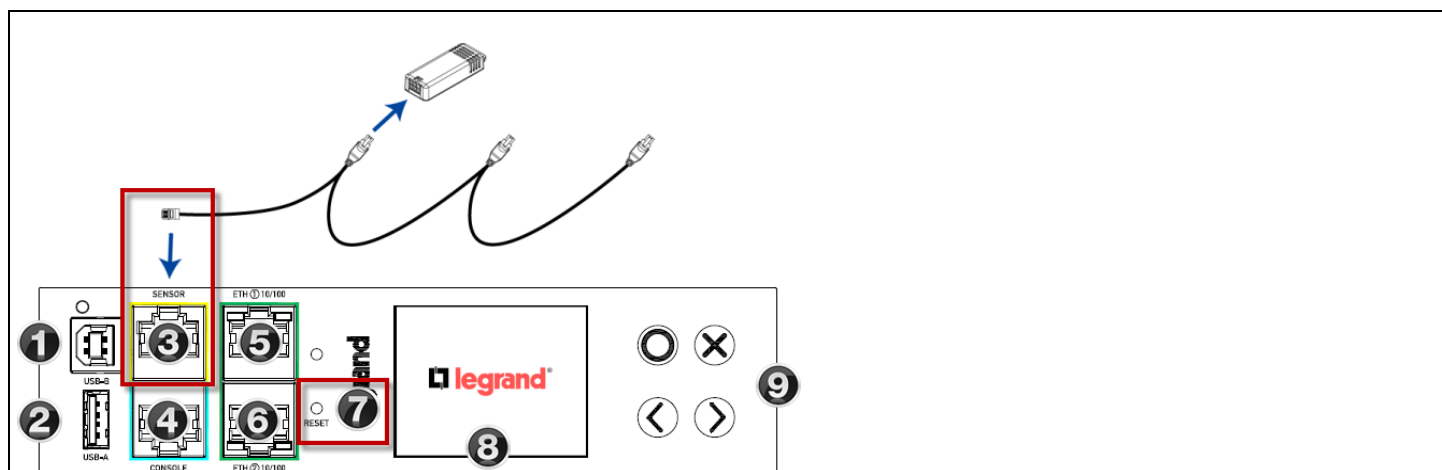
EXAMPLE

200-240V
16A
3.2-3.8KVA

- Connect each Legrand PDU to an appropriately rated branch circuit. See the label or nameplate affixed to your Legrand PDU for appropriate input ratings or range of ratings.
- Wait a few moments for the power-on self test and software loading. When complete, the front panel illuminates. Models with outlet LEDs show a steady color.



Controller



1 USB-B	<ul style="list-style-type: none"> ▪ Cascade devices to share a network connection. ▪ Establish a USB connection to a computer for CLI use or disaster recovery.
2 USB-A	<ul style="list-style-type: none"> ▪ Powered USB 2.0 port. ▪ Cascade devices to share a network connection. ▪ Connect a USB device, such as a Logitech™ webcam or wireless LAN adapter.
3 Sensor Port	<ul style="list-style-type: none"> ▪ RJ-45 connector. ▪ If you have optional environmental sensors or a hub, connect here. Some sensors require an RJ-45 adapter. ▪ See Set Thresholds on Sensors (on page 9) for details on setting up your sensors for alerts.
4 Console Port	<ul style="list-style-type: none"> ▪ RJ-45 connector. ▪ Establish a serial connection to a computer.
5 ETH1 10/100 Port	<ul style="list-style-type: none"> ▪ Use either Ethernet port for network connection or cascading. ▪ Supports up to 100 Mbps. ▪ Green LED: physical link and activity. ▪ Yellow LED: communications at 10/100 BaseT speeds.
6 ETH2 10/100 Port	
7 Reset Button	<ul style="list-style-type: none"> ▪ Pinhole reset button. ▪ Resets to factory defaults when a serial connection is present. ▪ Restarts the PDU software without loss of power to outlets when serial connection is not present.
8 Front Panel Display	<ul style="list-style-type: none"> ▪ View PDU and outlet information. ▪ Switch outlets on models with switching. ▪ View alerts.
9 Control Buttons for Front Panel Display	

Front Panel Display

Use the front panel display buttons to access information about your PDU in the display.

Inlet I1

2/2

Voltage:
127 V

Frequency:
50.0 Hz

Current:
0.000 A

11:34 AM Menu

Alerted Sensors

No Alerts

Back 12:01 PM

- Automatic mode shows inlet pages, or alerts when they are present.
- Scroll with arrow buttons to view all pages, indicated in top right corner.

Main Menu

Alerts

PDU

Inlet I1

Peripherals

Assets

Device Info

Auto 11:38 AM Select

- Scroll with arrow buttons to select items in menu.
- Check the bottom corners for available operations on each page.

Alerted Sensors

1 warned

Recent transitions

Temperature 1 12:27

Menu 12:27 PM Alert list

Alerted Sensors

1 critical
1 warned

Recent transitions

Relative Humidity 1 12:31

Temperature 1 12:27

Menu 12:31 PM Alert list

- When alerts are present, display color is yellow or red.
- Display is red when any critical level alerts are present.

Connect to the Network

Legrand PDU is set to use DHCP by default. For details on static IP configuration, see the online help.



Wired Connections

- Connect the PDU ETH1 or ETH2 to your LAN using standard network patch cables.
- When connecting both ETH1 and ETH2 ports to your LAN, ensure that each connection is made to a different subnet.



Wireless Connections

- Connect a supported USB wireless LAN adapter to the PDU USB-A port. OR: Connect a USB hub to the PDU USB-A port, then plug the supported USB wireless LAN adapter to the hub.

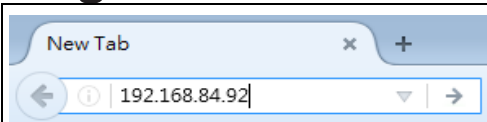
Supported Wireless LAN Configuration

- Network type: 802.11 A/B/G/N
- Protocol: WPA2 (RSN)
- Key management: WPA-PSK, or WPA-EAP with PEAP and MSCHAPv2 authentication
- Encryption: CCMP (AES)

Supported Wi-Fi LAN Adapters and 802.11 Protocols

- SparkLAN WUBR0508N: A/B/G/N
- Proxim Orinoco 8494: A/B/G
- Zyxel NWD271N: B/G
- Edimax EW-7722UnD: A/B/G/N
- TP-Link TL-WDN3200 v1: A/B/G/N
- Raritan USB WIFI: A/B/G/N

Login to Web Interface

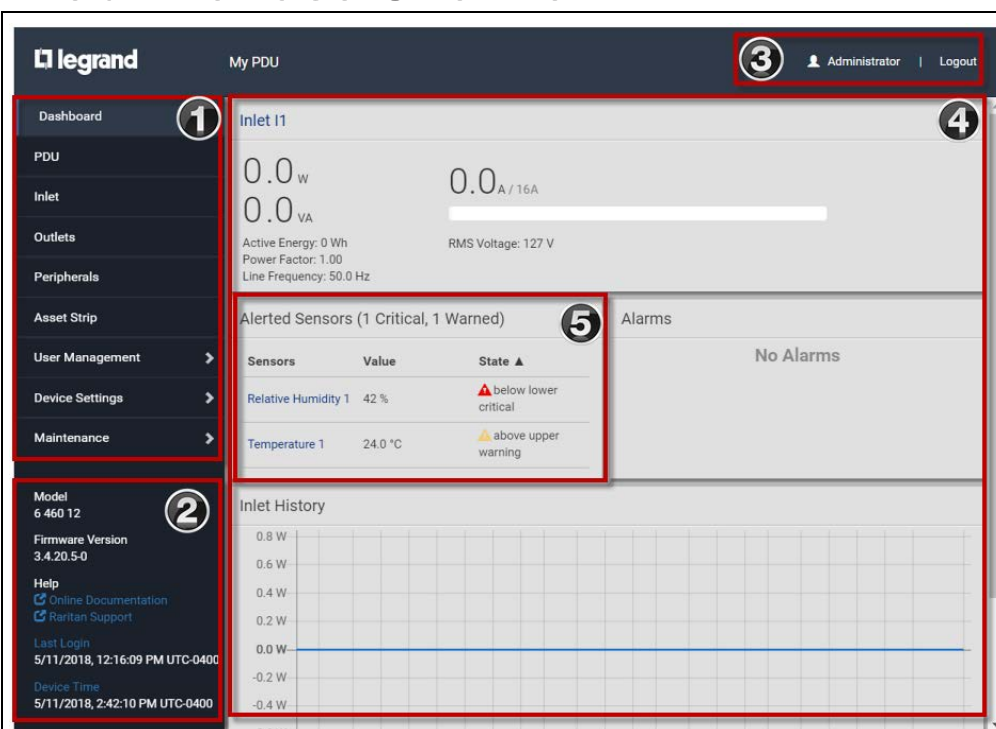


- Use a supported web browser to go to the IP address of the PDU. You can retrieve the IP address from the LED display: Menu > Device Info > ETHERNET page.
- Default Login: admin/raritan
- Note: You can also configure your Legrand PDU via USB or serial port. See the online help for details.

Supported Web Browsers

- Internet Explorer® 11
- Microsoft Edge
- Firefox® 52 and later
- Safari® (Mac)
- Google® Chrome® 52 and later
- Android 4.2 and later
- iOS 7.0 and later

Web Interface Overview



1 Menu	<ul style="list-style-type: none"> ▪ Click a Menu item to go to that page. Your menu items may vary based on your PDU model and accessories.
2 Info area	<ul style="list-style-type: none"> ▪ Model number ▪ Firmware version ▪ Help links: Click to go to online help and technical support. ▪ Your last login date and time: Click to go to login history. ▪ Device Time: Click to go to device time settings.
3 User Name and Logout	<ul style="list-style-type: none"> ▪ Logged in username ▪ Click to logout.
4 Dashboard	<ul style="list-style-type: none"> ▪ This example shows the Dashboard page to view Inlet readings, Alerts, Alarms, Inlet History. Your dashboard may vary based on your PDU model.
5 Alerted Sensors	<ul style="list-style-type: none"> ▪ When internal or environmental sensors enter a warning or critical state, the Alerted Sensors appear here until they are cleared. Click to go to details. ▪ You can set thresholds for these alerts. See Thresholds (see "Set Thresholds on Sensors" on page 9).

Set Thresholds on Sensors

If you have optional environmental sensors, follow these tips for web configuration.

legrand

My PDU

Administrator | Logout

Dashboard

PDU

Inlet

Outlets

Peripherals

Asset Strip

User Management

Device Settings

Maintenance

Peripheral Devices

#	Name	Reading	State	Type	Position	Actuator
1	Temperature 1	24.0 °C	normal	Temperature	Port 1, Chain Position 5	
2	Relative Humidity 1	42 %	normal	Humidity	Port 1, Chain Position 5	
3	Temperature 2	24.0 °C	normal	Temperature	Port 1, Chain Position 6	
4	Hall Effect 1		normal	Door Contact	Port 1, Chain Position 1	
5	On/Off 1		normal	Contact Closure	Port 1, Chain Position 1, Channel 1	
6	On/Off 2		normal	Contact Closure	Port 1, Chain Position 1,	

- Click Peripherals in the Menu to view your connected external sensors.
- Numeric sensors, such as temperature and humidity sensors, have threshold values that control when alerts appear. Alerts appear in the Dashboard and the LED display of your PDU.
- Click the Name to configure. When the sensor page opens, click Edit Thresholds.

Temperature 1

Details

Peripheral Device ID

1

Position

Port 1, Chain Position 5

Serial Number

QMSemu0005

Type

Temperature

Sensor

Reading

24.0 °C

State

normal

Last Time Changed

5/11/2018, 3:52:22 PM UTC-0400

Edit Thresholds

- Use the default threshold values, or clear the checkbox to configure your own threshold values.
- Clear the checkboxes for any alert levels you don't want. All sensors provide upper and lower warning and critical levels.

Sensor

Edit Thresholds

Use Default Thresholds

☒

Lower Critical

☒

10

°C

Lower Warning

☒

15

°C

Upper Warning

☒

30

°C

Upper Critical

☒

35

°C

Deassertion Hysteresis

1

°C

Assertion Timeout

0

Samples

Cancel

Save

Additional Information

- Legrand PDU Support page: <https://www.raritan.com/support/product/lg>
- Legrand PDU Online Help: <http://help.raritan.com/lg>
- For more details on sensors, download the Environmental Sensors and Actuators Guide from the Support page: <https://www.raritan.com/support/product/lg/>

Raritan's products use code licensed under the GPL and LGPL. You can request a copy of the open source code. For details, see the Open Source Software Statement at (<http://www.raritan.com/about/legal-statements/open-source-software-statement/>).