

# USER MANUAL

---

WB Series

Model: Interactive Touch Display 4K Lite

Thank you for purchasing this product

To receive more complete service, please contact support: [LCDsupport@live.com](mailto:LCDsupport@live.com)

---

# Warning! Important Safety Instructions



Please take a moment to carefully read and understand the following safety instructions before using your digital poster:

## Ventilation:

The slots and openings on the back or bottom of the screen is designed to provide necessary ventilation. To ensure the reliable operation of the device and prevent overheating, it is crucial that these slots and openings are never blocked or covered.

Avoid placing the screen in confined spaces like bookcases or built-in cabinets, unless proper ventilation is available. Keep the screen away from radiators and heat registers

## Water and Moisture:

Do not place vessels (such as vases) containing water on the screen, as this can result in fire or electric shock.

Avoid exposing the screen to rain or placing it near water sources like bathtubs, washbowls, kitchen sinks, laundry tubs, wet basements, or swimming pools. In case of accidental exposure to water, immediately unplug the device and contact an authorized dealer.

## Electrical Safety:

Avoid overloading wall outlets, extension cords, or adapters beyond their capacity, as this can lead to fire or electric shock.

Ensure that power-supply cords are positioned in a way that prevents them from being walked on or pinched. Pay attention to cords at the plug end, wall outlets, and where they exit the device.

During lightning storms or when leaving the screen unused for extended periods, unplug it from the wall outlet and disconnect the antenna or cable system to prevent damage from lightning or power line surges.

Never touch the inside of the screen, as it may result in electric shock. Only qualified technicians should open the device.

Always firmly plug in the power cord and pull the plug, not the cord itself, when disconnecting from the wall outlet.

Avoid touching the power cord with wet hands.

If the screen does not operate normally, emits unusual sounds or smells, immediately unplug it and contact an authorized dealer or service center.

## Installation Considerations:

For information on installing the screen in environments with heavy dust, extreme temperatures, high humidity, or chemical substances, please contact customer service. Failure to do so may cause serious damage to the screen.

Use only properly grounded plugs and wall outlets to ensure safety and prevent electric shock or equipment damage (Class I Equipment only).

When turning off the screen completely, disconnect it from the wall outlet. Ensure easy access to the wall outlet and power plug for quick unplugging if needed.

Avoid dropping or striking the product. In case of damage, disconnect the power cord and contact customer service.

## Cleaning and Maintenance:

Before cleaning, unplug the power cord from the wall outlet. Use a soft, dry cloth to wipe the product. Do not use chemicals like wax, benzene, alcohol, thinners, insecticides, air fresheners, lubricants, or detergents, as they can damage the panel's appearance or erase printing on the product.

Prevent exposure of the screen to dripping or splashing liquids.

Keep the display away from heat sources and place it in a stable, well-ventilated location.

Handle the product with care, as it contains glass.

The holes or openings on the display are designed for ventilation. Do not cover or block them with any objects.

Remove any protective covering from the screen before using the display.

Power supply must be shut off before cleaning. Use a soft, lint-free cloth for screen wiping. If needed, you may use a glass cleaner, but avoid spraying it directly onto the display surface. Refer to Section 7.10 for more details.

Do not attempt to repair the product yourself, as improper disassembly may void the warranty and pose potential dangers.

If you encounter a problem that cannot be resolved using the provided troubleshooting guidelines, please contact your supplier.

## Attention:

For displays intended for installation in windows, it is crucial to mount the panel surface a minimum of 100mm away from the inside of the window. However, we strongly recommend maintaining a distance of 200mm to ensure adequate air circulation between the display and the window. Failure to comply with these guidelines may result in failure, which will be considered user damage.

---

## Table of Contents

<b>1. Introduction.....</b>	<b>4</b>
1.1 Box Contents .....	4
1.2 Product Overview .....	5
1.3 Remote Control.....	6
1.4 Remote Control Range.....	7
1.5 Front Controls .....	8
1.6 Front Inputs .....	9
1.7 Calibration for Windows 7 .....	11
1.8 Calibration for Windows 8.1 and above .....	15
<b>2. Freeze Frame Function.....</b>	<b>18</b>
<b>3. Freeze Frame Function.....</b>	<b>19</b>
<b>4. Specifications and Other Information.....</b>	<b>20</b>
4.1 Decreasing power consumption .....	20
4.2 Disposal .....	20
4.3 Warnings .....	20

---

# 1. Introduction

We would like to extend our congratulations on your recent purchase of our product. Before using it for the first time, we kindly request you to read the manual thoroughly and follow all provided instructions.

To ensure the proper functioning and longevity of the product, please take note of the following guidelines:

Avoid exposing the product to liquids in the form of dripping or splashing. It is essential to keep the product away from any objects that contain liquids, such as vases.

**Attention:**

Please refrain from making unnecessary changes to the default settings.

During both installation and use, it is crucial to keep the product away from water sources.

## 1. 1 Box Contents

1 x Interactive Touch Display 4K Lite

1 x Power Cable

1 x USB A Male to USB A Male Cable

1 x USB A Male to USB B Male Cable

1 x HDMI cable

1 x User Manual (QR Code)

1 x Remote Control

1 x Telescopic Pointer

2 x Magnetic Whiteboard Pen

2 x Batteries

## 1.2 Product Overview

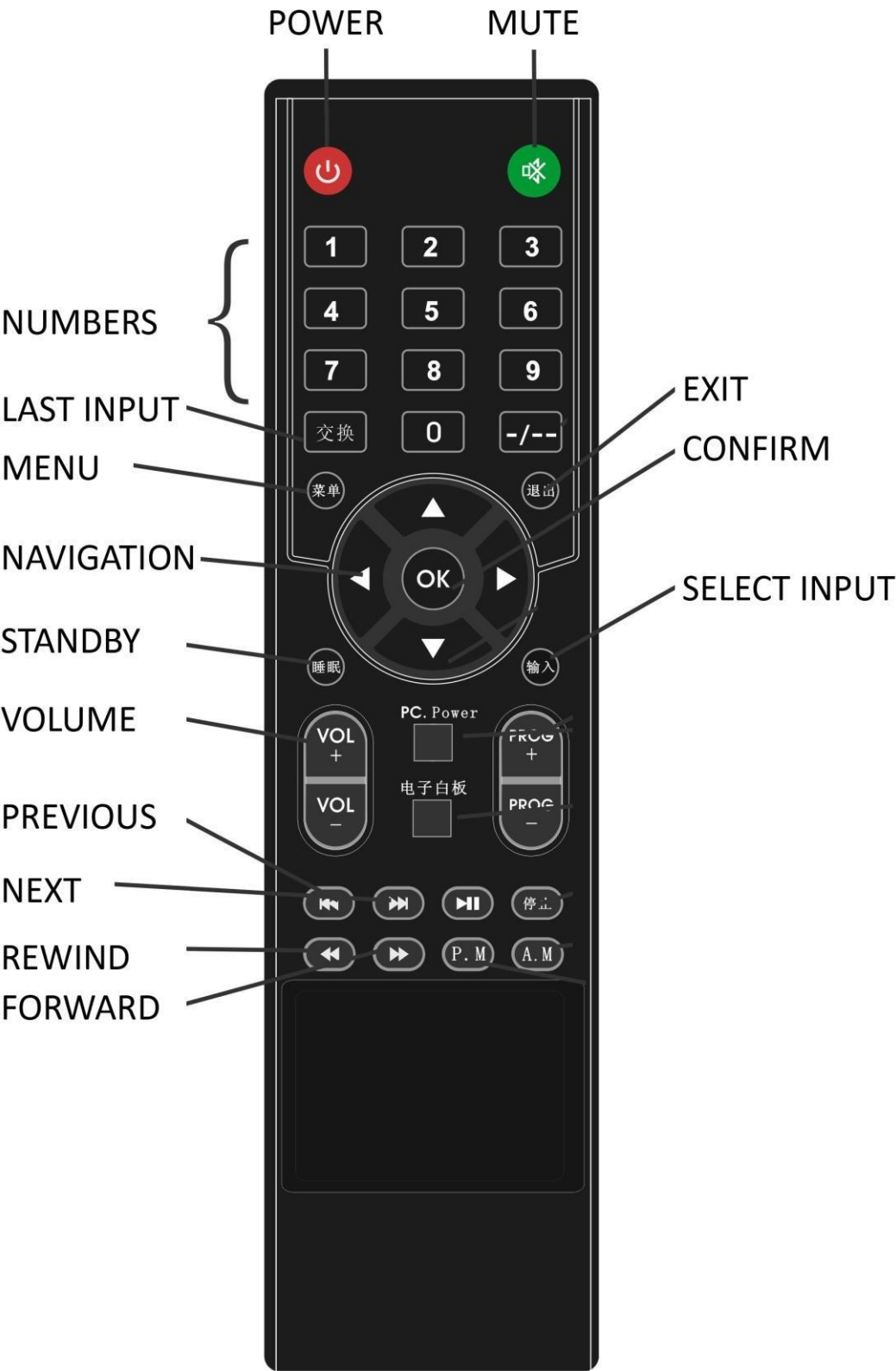
### Front



### Back

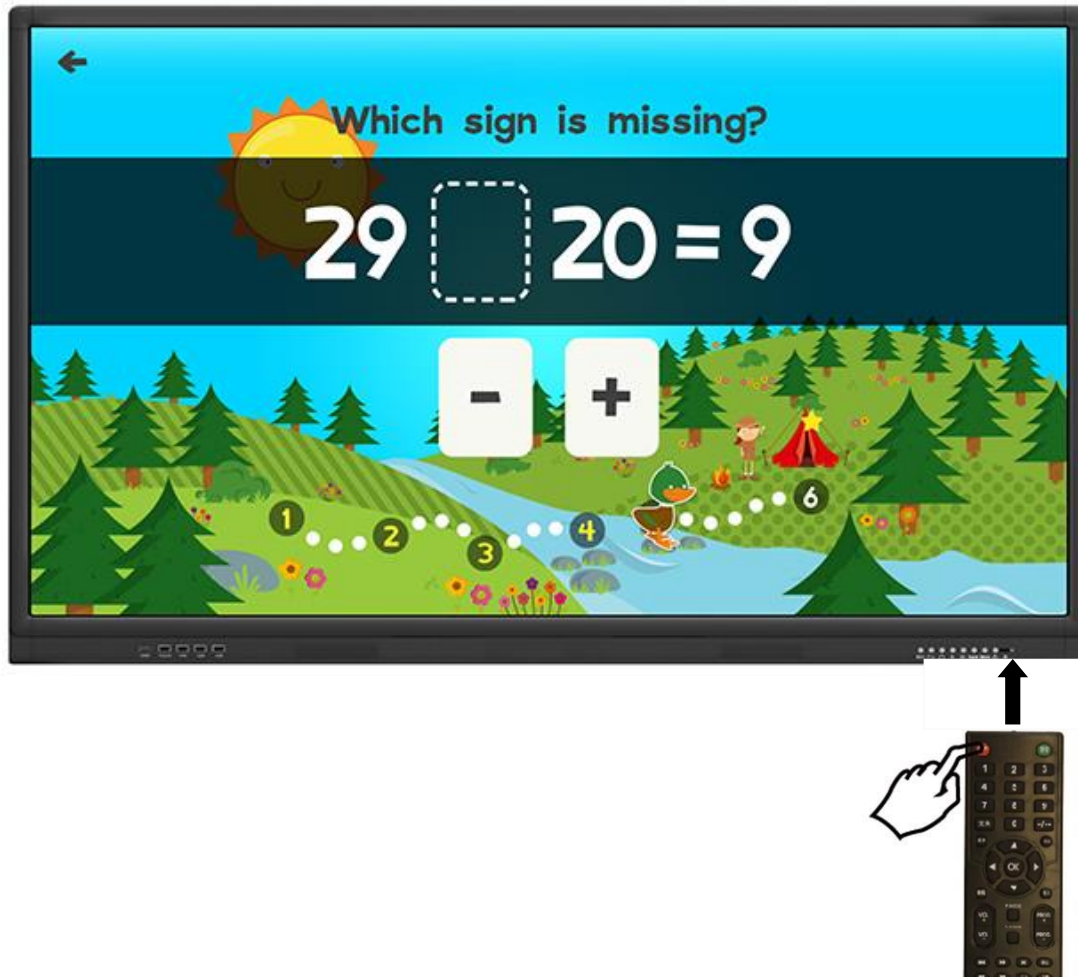


### 1.3 Remote Control

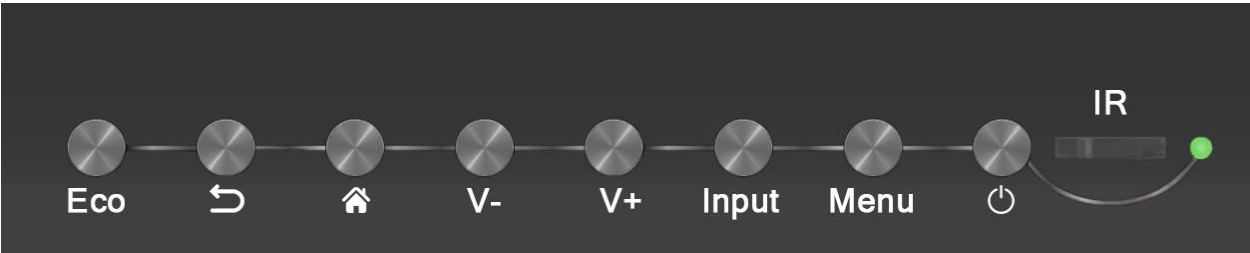



## 1.4 Remote Control Range

Please keep remote control within 8 meters of sensor.



# 1.5 Front Controls



Button	Function
Eco	TBA
Back	Navigates Back.
Home	Navigates Home.
V-	Decrease Volume
V+	Increase Volume
Input	Select Input Source
Menu	Menu Access
	Power ON/OFF
IR	Remote Control Sensor



## 1.6 Front Inputs



Input	Function
HDMI	HDMI input for AV signal
TOUCH	USB port for touch function
USB	USB port for internal PC (where applicable)
USB	USB port for internal PC (where applicable)
USB	USB port for internal PC (where applicable)

### Connecting Your PC/Laptop

To use your PC to drive the Interactive Touch Display you must make two connections; USB (for the touch function) and HDMI (for the audio and visual signals). The quick and convenient way of doing this is to use the HDMI and USB-TOUCH inputs on the front of the screen. If you are setting up a PC as a permanent fixture then you should use the HDMI and USB-TOUCH inputs on the rear of the unit, that way the PC can be hidden.

### Connecting PC/Laptop using the front inputs

Using the USB to USB cable provided, insert one end into your PC/Laptop and the other end into the USB port labeled “TOUCH”. Then using the HDMI cable provided, insert one end into your PC/Laptop and the other into the HDMI input labeled “HDMI”.



Your PC/Laptop display should now be showing on screen and the touch function should be activated automatically. If your video signal isn't displaying, please refer to your PC/Laptop user manual for any specific instructions; e.g. you may have to press a “monitor” key. If your touch function isn't working.

---

### Connecting PC/Laptop using the rear inputs

Using the USB to USB cable provided, insert one end into your PC/Laptop and the other end into the USB port labeled “TOUCH” on the rear of the unit. Then using the HDMI cable provided, insert one end into your PC/Laptop and the other into the HDMI input labeled “HDMI” on the rear of the unit.



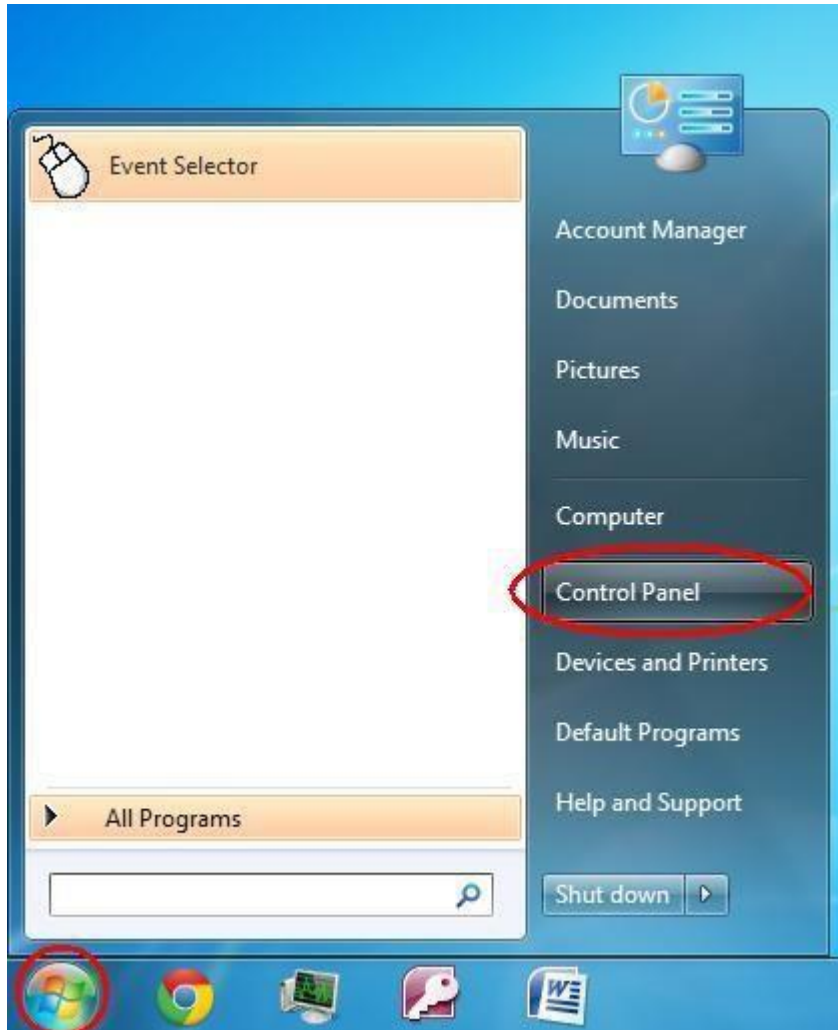
Your PC/Laptop display should now be showing on screen and the touch function should be activated automatically. If your video signal isn't displaying, please refer to your PC/Laptop user manual for any specific instructions; e.g. you may have to press a “monitor” key. If your touch function isn't working correctly and you wish to calibrate it please see the next section

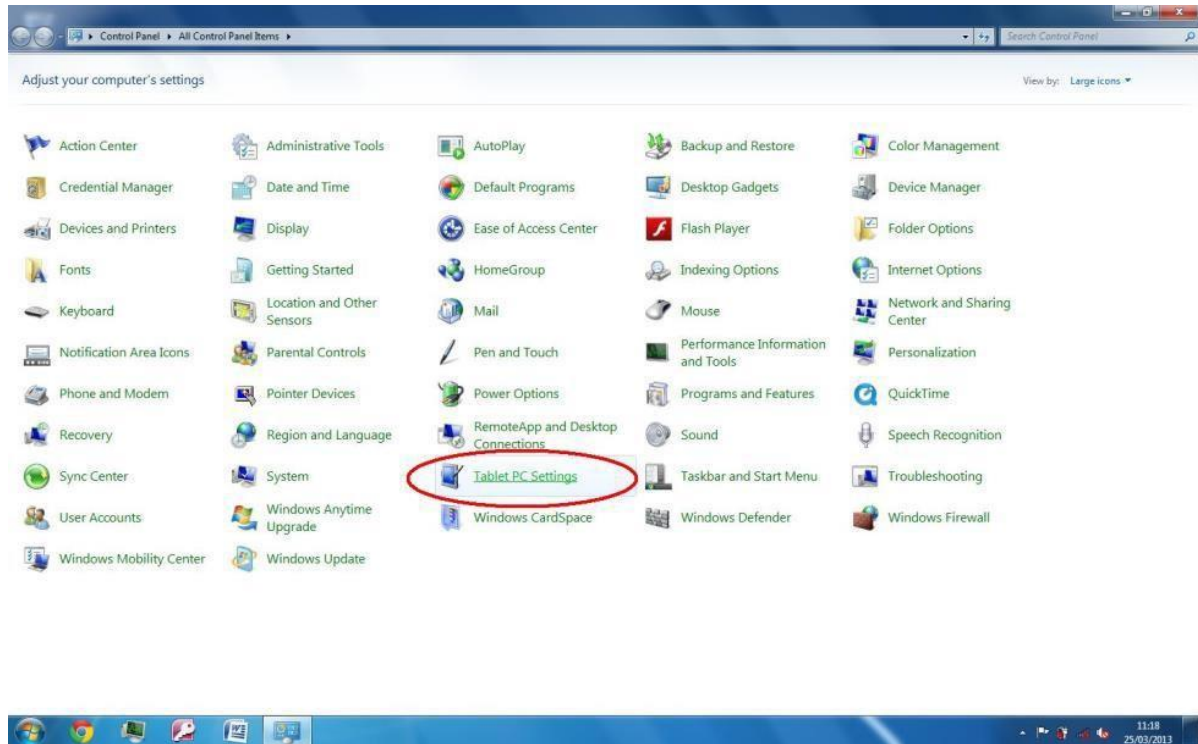
## 1.7 Calibration for Windows 7

Your Windows PC should automatically recognise your product as a touch screen and install the necessary drivers and calibrate. Once you connect the touch screen to your PC via the USB cable it should be ready to use.

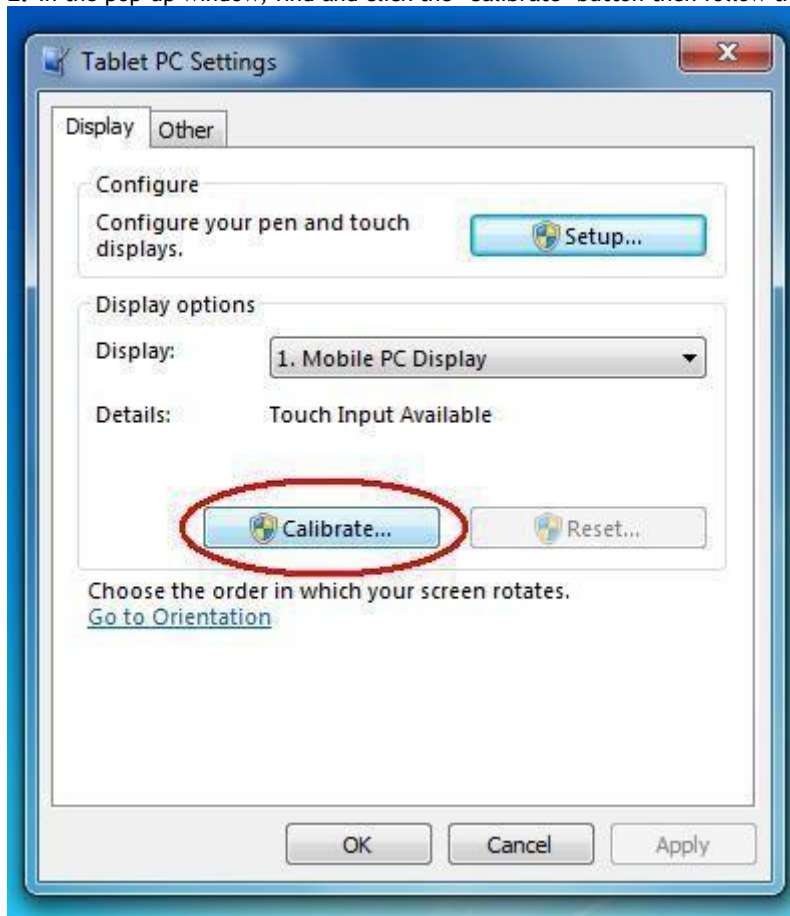
If you want to calibrate the touch screen manually, please follow the instructions below.

1. Make sure you have correctly connected the touch screen to your PC, it is displaying in the correct resolution, and the cursor responds when you touch the screen. Then click 'Start', go to the control panel and find the 'Tablet PC Setting'.





2. In the pop-up window, find and click the 'Calibrate' button then follow the instruction to complete the process.

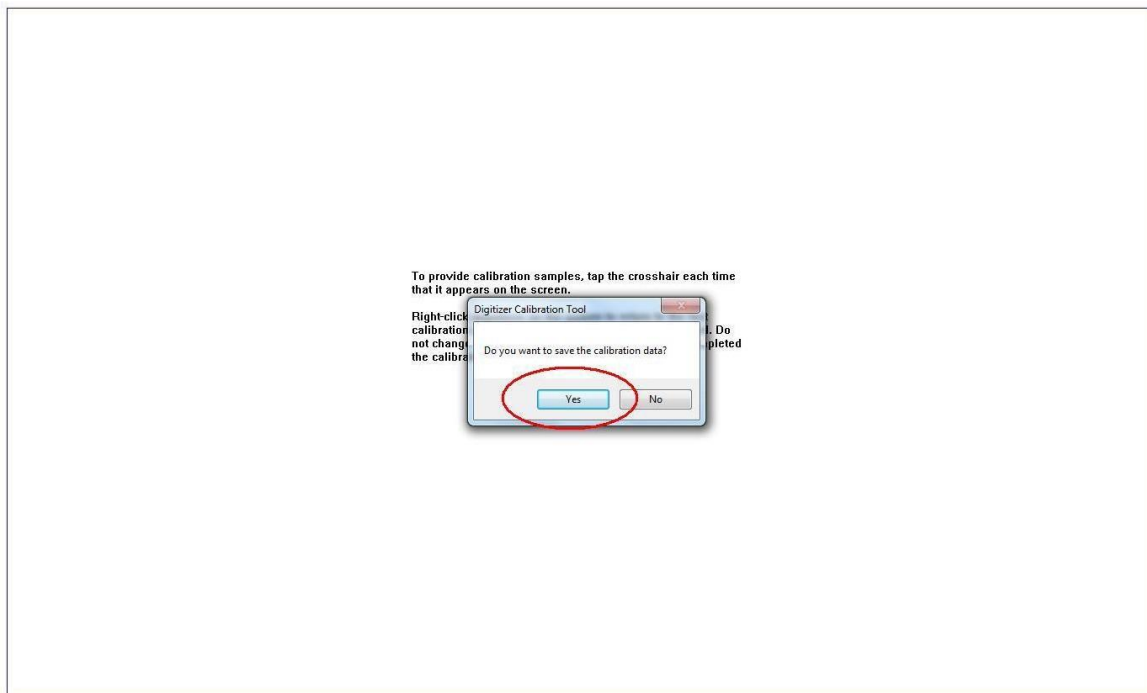


To provide calibration samples, tap the crosshair each time that it appears on the screen.

Right-click anywhere on the screen to return to the last calibration point. Press the Esc button to close the tool. Do not change your screen orientation until you have completed the calibration process.

---

3. Click 'Yes' at the end of the progress to finish the calibration.



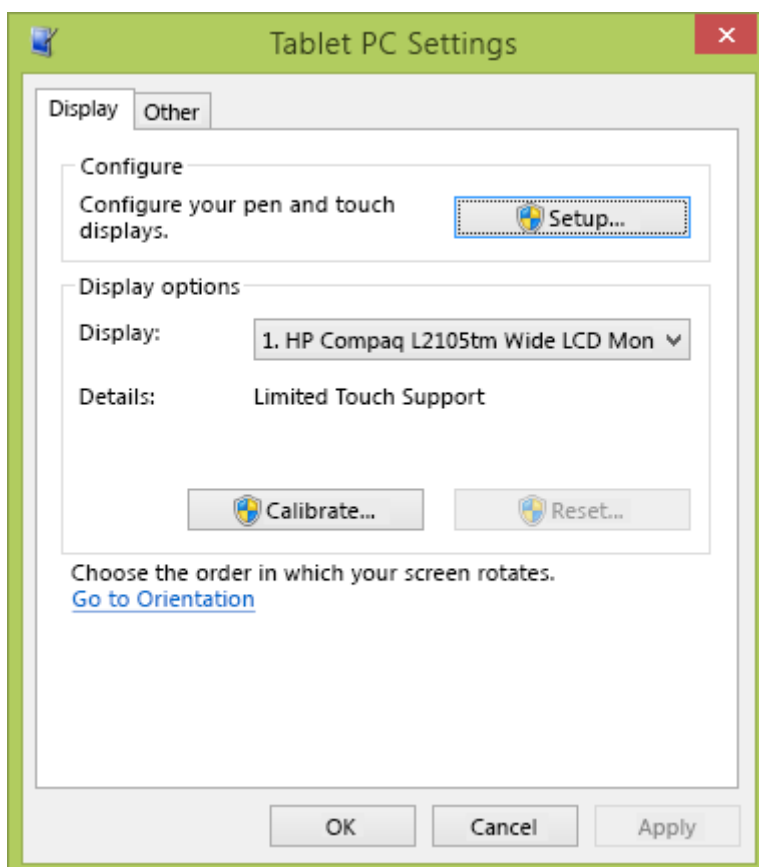
**NOTE:** If your PC recognizes the touch screen as a "Touch Pad" please remove USB cable and re-insert it.

## 1.8 Calibration for Windows 8.1 and above.

Your Windows PC should automatically recognise your product as a touch screen and install the necessary drivers and calibrate. Once you connect the touch screen to your PC via the USB cable it should be ready to use.

If you want to calibrate the touch screen manually, please follow the instructions below.

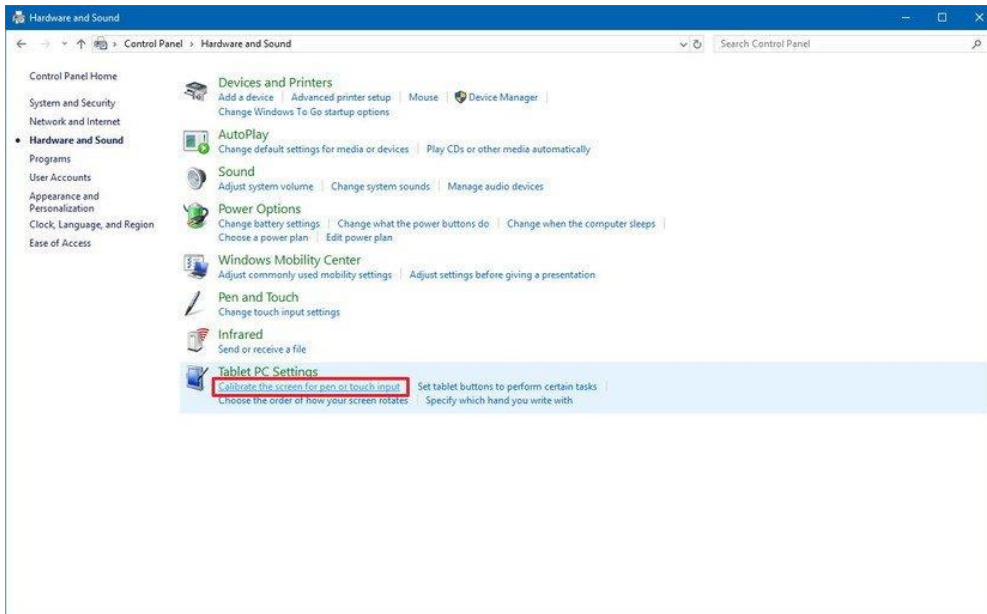
1. Swipe in from the right edge of the screen, then tap Search. (If you're using a mouse, point to the bottom-right corner of the screen, move the mouse pointer up, then click Search.)
2. Enter Calibrate in the search box, then tap or click Calibrate screen for pen or touch input to open Tablet PC Settings.
3. Check that the monitor shown in the Display field matches the screen that you want to calibrate.
4. Tap or click Calibrate, then follow the on-screen instructions.



**NOTE:** If your PC recognizes the touch screen as a “Touch Pad” please remove USB cable and re-insert it.

### 1.9 Calibration for Windows 10

1. Click start at the bottom right hand corner and type in “Control Panel”
2. Click on “Hardware and Sound”
3. Under “Tablet PC Settings,” click the “Calibrate the screen for pen or touch input” link

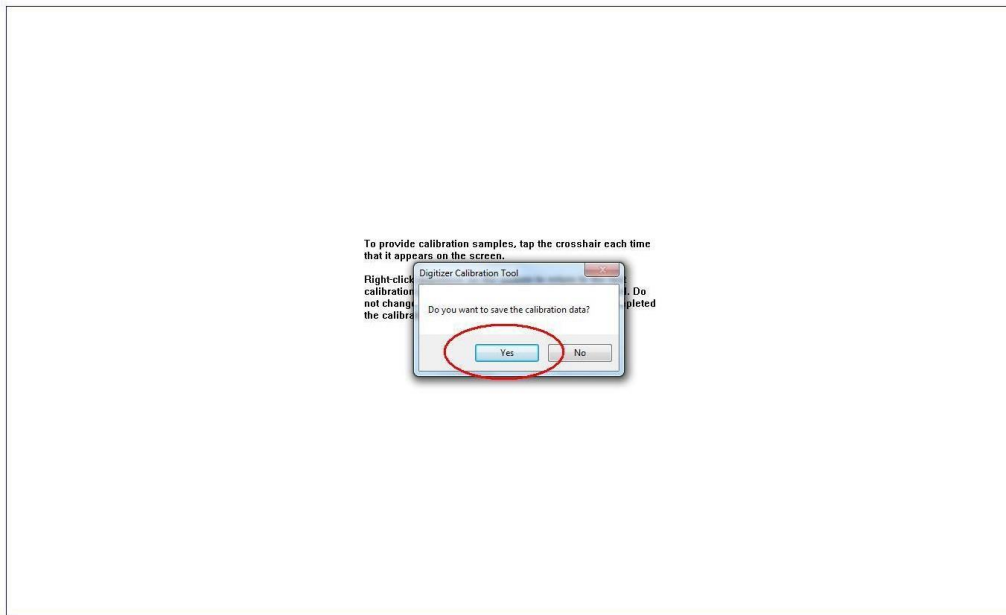


4. Check that the monitor shown in the Display field matches the screen that you want to calibrate.
5. Tap or click Calibrate, then follow the on-screen instructions.



1. Click 'Yes' at the end of the progress to finish the calibration.





**NOTE:** If your PC recognizes the touch screen as a “Touch Pad” please remove USB cable and re-insert it.

---

## 2. Freeze Frame Function

If you want to freeze the current image on the Interactive Touch Display but still want to use your PC/Laptop independently you can do so by pressing the “Freeze Frame” button on your remote control.



When the freeze mode is set to “ON” the image from the video signal will not change until it is turned off by pressing the “Freeze Frame” button on the remote again.

---

### 3. Freeze Frame Function

When you start noticing dust, fingerprints and smears on your screen, it's time to give it a clean.

- 1) Unplug or turn off your screen before you begin. Turning your TV off is safer, and you can see more dirt and smudges when the TV is unplugged. Plus, this gives your TV a chance to cool down, which will help you clean it better.



- 2) Clean the body or panel of your screen with a microfiber cloth dampened with a small amount of screen cleaning product. Please do so in a circular motion to clean off any dust or debris.
- 3) Once the screen is clean, remove any moisture using a dry cloth.



**Please note:** Do not spray water or any other liquid directly onto the TV. Any liquid entering the TV may cause a failure, fire, or electric shock; Never use paper towels, tissues, or rags to clean your TV screen. These contain fibres that can leave scratches on your screen. Also, remember to avoid pressing down too hard. Pushing on the screen too hard and cause pixels to burn out.

---

## 4. Specifications and Other Information

### 4.1 Decreasing power consumption

When you turn off the screen, it enters Standby mode, which still consumes a small amount of power. To minimize power consumption, it is recommended to unplug the power cord when the screen will not be used for an extended period.

### 4.2 Disposal

Correct Disposal of This Product (Waste Electrical & Electronic Equipment) (Applicable in countries with separate collection systems) This marking on the product, accessories or literature indicates that the product and its electronic accessories should not be disposed of with other household waste at the end of their working life. To prevent possible harm to the environment or human health from uncontrolled waste disposal, please separate these items from other types of waste and recycle them responsibly to promote the sustainable reuse of material resources. Household users should contact either the retailer where they purchased this product, or their local government office, for details of where and how they can take these items for environmentally safe recycling. Business users should contact their supplier and check the terms and conditions of the purchase contract. This product and its electronic accessories should not be mixed with other commercial wastes for disposal



### 4.3 Warnings

Image retention, commonly known as screen burn-in, can occur on most types of LCD panels if the same image is displayed continuously. The most common causes of image retention are logos that remain stationary on the LCD panel. To reduce this risk, avoid displaying still images for long durations and lower the brightness settings to decrease the intensity of the picture. Extended viewing of art in aspect ratios that are different from the aspect ratio of the panel may cause image retention. Always try to avoid black borders at the top or bottom by using correct image/video resolution. This will help eliminate the black borders and fit the picture to the entire area of the screen.