

## How To Install a Server into a Tank

### H262

#### Installing Server



#### CAUTION!

- Make sure the crane can handle at least 60 KG before installing the server into a tank.
- Only licensed professionals are authorized to access the restricted access location.
- The power supply fan is disabled by default, so the server must be immersed in the fluid before powering on.
- Consult with immersion cooling tank vendor to ensure compatibility and read their tank manual thoroughly.

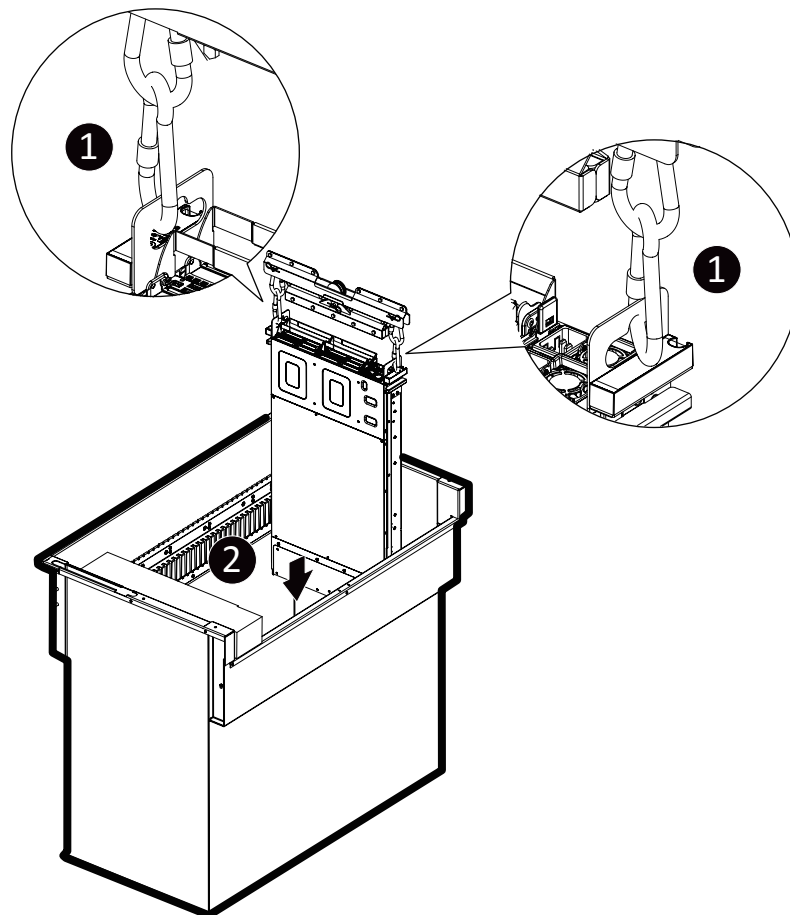


#### DANGER!

- Strongly recommended to use gloves when handling the coolant.
- Before handling coolant, handlers must read the material safety data sheet (MSDS) for their safety.
- The thermal pad contains Indium foil, so it is strongly recommended to use gloves when replacing the thermal pad.

#### Installation

- 1 Attach the two carabiners to server handles.
- 2 Put the server into the tank vertically.



## How To Install a Thermal Pad to CPU

### Installing Thermal Pad

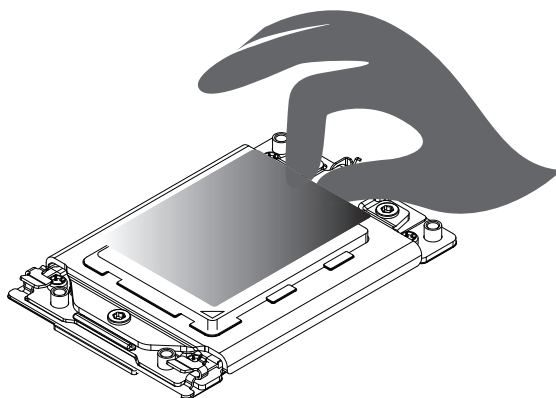


#### DANGER!

- Strongly recommended to use gloves and mask when handling the thermal pad.
- The thermal pad contains Indium foil, so it is strongly recommended to use gloves when replacing the thermal pad.

### Installation

- 1 Place the thermal pad on the top of CPU.



- 2 Install the CPU heatsink.

When installing the heatsink to CPU, use a Torx T20 screwdriver to tighten 4 captive nuts in sequence as 1-4.  
The screw tightening torque:  $10 \pm 0.5$  kgf-cm.

