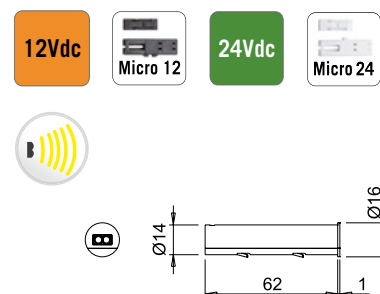




## IR 2.0 FC FW

back-door sensor

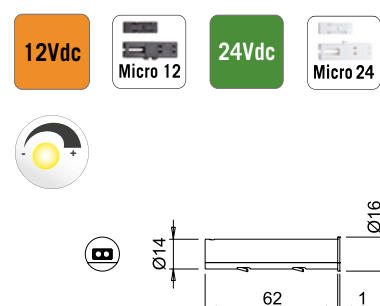
<b>Code</b>	1759801 (white) - 1759803 (black)
<b>Input</b>	12-24VDC
<b>Output</b>	12-24VDC
<b>Power</b>	max 36W (12VDC) 72W (24VDC)
<b>Wiring IN</b>	2500mm Micro12 male 100mm adapter cable M24
<b>Wiring OUT</b>	2500mm Micro12 female 150mm 9x Micro12 female 150mm 10x Micro24 female



## IR 2.0 SD FW

sensor dimmer switch

<b>Code</b>	1760001 (white) - 1760003 (black)
<b>Input</b>	12-24VDC
<b>Output</b>	12-24VDC
<b>Power</b>	max 36W (12VDC) 72W (24VDC)
<b>Wiring IN</b>	2500mm Micro12 male 100mm adapter cable M24
<b>Wiring OUT</b>	2500mm Micro12 female 150mm 9x Micro12 female 150mm 10x Micro24 female



## IR ACCESSORIES

2x IR 2.0 adapter cable\*

<b>Code</b>	1185801/S
<b>Wiring IN</b>	2x cable 2000mm M24M M12F
<b>Wiring OUT</b>	2x cable 2000mm M12M M12F
<b>Wiring splitter</b>	1x cable 200mm 2M12M 1M24F

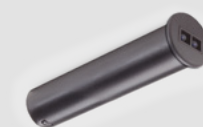


\*see wiring diagram specifications on page 2

# IR 2.0

## Infrared sensor

IR 2.0 is an infrared sensor for controlling single-colour LED luminaires @12VDC (max 36W) and @24VDC (max 72W). It is factory-set in either "limit-switch" mode (IR 2.0 FC) for installation behind a cabinet door, or in "sensor-dimmer switch" mode (IR 2.0 SD) for under cabinet installation. The appliance has a setup button that allows the function of both models to be changed at any time, from FC to SD and vice versa. IR 2.0 can be installed recessed in a Ø14mm hole, or surface-mounted using the adhesive sticker provided in the package. In limit-switch mode, IR 2.0 activates the instant switching ON/Off the luminaires connected to the output cable by opening and closing the door on the back of which the sensor is installed. With quick hand movements in front of the sensor, you can control the switching ON/Off of IR 2.0 SD, while keeping a hand steadily in front of the sensor allows you to adjust (10-100%) the brightness. The device is supplied with 2500mm power cable with a Micro12 male connector, 2500mm output cable with Micro12 female connector, 9-slot Micro12 female distributor, and, for using IR 2.0 with single-colour LED devices @24VDC, a wiring adapter set that configures the device with the Micro24 connection system. Power supply not included, to be ordered separately.



black



white

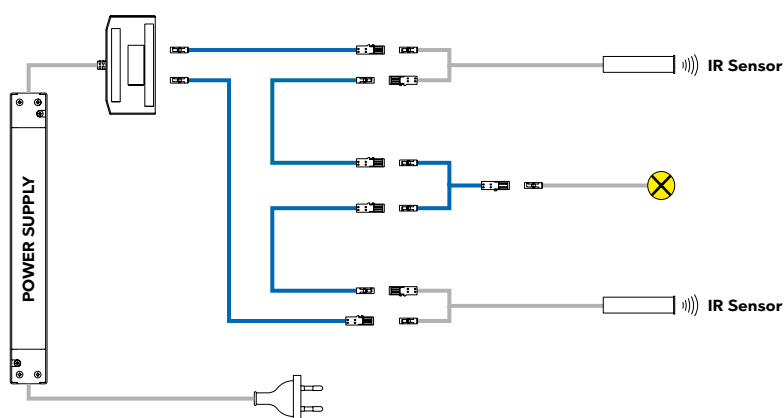


IR 2.0 FC is an infrared limit-switch sensor that automatically switches the connected devices ON and Off instantly when the door, behind which it is installed, is opened or closed. The detection range (max. approximately 100mm) varies depending on the finish and reflectivity of the door surface. To ensure proper operation, the sensor must be installed at least 1mm away from the door panel. It is therefore advisable to do a preliminary test before installation and avoid using IR 2.0 near heat sources or electromagnetic fields, which could alter or compromise its functioning. See the instruction manual for more details.



IR 2.0 SD is an infrared sensor-dimmer switch that switching ON/Off and adjusts (10-100%) the brightness of the luminaires connected to it. Switching ON and Off is instantaneous and is activated by quick hand movements near the sensor at a maximum distance of approximately 50mm. The brightness adjustment, which is activated by keeping a hand steadily in front of the sensor, is stored in memory, and maximum brightness is indicated by a brief flash of the connected luminaires. IR 2.0 SD integrates an automatic switch-off function that activates after approximately 18 hours of continuous operation.

The 2x IR 2.0 adapter wiring set (sold separately) allows to set a system with two sensors controlling a luminaire—or a set of luminaires—in a shared mode. For example, two IR 2.0 FC sensors can be installed inside a wardrobe with double hinged doors, enabling the light to turn ON when either door is opened, and to turn Off only when both are closed.



The factory-set mode of IR 2.0 can be changed by the user at any time from FC (limit-switch) to SD (sensor-dimmer switch) and vice versa by pressing the setup button located on the back surface. See the instruction manual for more details.



Upon first power-up, IR 2.0 performs a sensitivity self-test, which is saved. Any change in installation requires the luminaire to be reset, which must be done by cutting the power for at least 10 seconds. Do not connect the IR 2.0 power unit to a mains electrical circuit switch, as this could unintentionally trigger the self-test function.



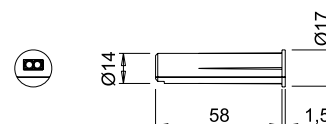
## IR 3.0 FC

back-door sensor

<b>Code</b>	F0126000034 (white) F0126000035 (black)
<b>Input</b>	12-24VDC
<b>Output</b>	12-24VDC
<b>Power</b>	max 36W (12VDC) 72W (24VDC)
<b>Wiring IN</b>	2500mm Micro24 male
<b>Wiring OUT</b>	2500mm Micro24 female 150mm 10x Micro24 female

24Vdc

Micro 24



## IR ACCESSORIES

M24|M12 adapter cable set

<b>Code</b>	4015500/S
<b>Wiring IN</b>	100mm M24F M12M
<b>Wiring OUT</b>	150mm 10xM12F M24M

12Vdc

Micro 12



## IR ACCESSORIES

2x IR 3.0 adapter cable\*

<b>Code</b>	1185801/S
<b>Wiring IN</b>	2x cable 2000mm M24M M12F
<b>Wiring OUT</b>	2x cable 2000mm M12M M12F
<b>Wiring splitter</b>	1x cable 200mm 2M12M 1M24F

24Vdc

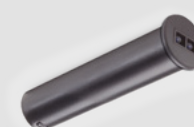
Micro 24

\*see wiring diagram specifications on page 4

# IR 3.0 FC

## Infrared sensor

IR 3.0 FC is an infrared “limit-switch” sensor for controlling single-colour LED devices @12VDC (max 36W) and @24VDC (max 72W), recommended for installation behind cabinet doors and recessed into a Ø 14 mm hole. IR 3.0 FC activates the instant switching ON/Off the luminaires connected to the output cable by opening and closing the door on the back of which the sensor is installed. IR 3.0 FC features an enhanced detection signal and is therefore particularly suitable for installation behind doors with low-reflective surfaces. The appliance is supplied with a 2500mm power cable and Micro24 male connector, 2500mm output cable and Micro24 female connector, distributor with 10 Micro24 female slots. To use IR 3.0 FC for controlling single-colour LED luminaires @12VDC (max 36W), an adapter cable set -separately sold- that configures the luminaire with the Micro12 connection system is available. Power supply not included, to be ordered separately.



black

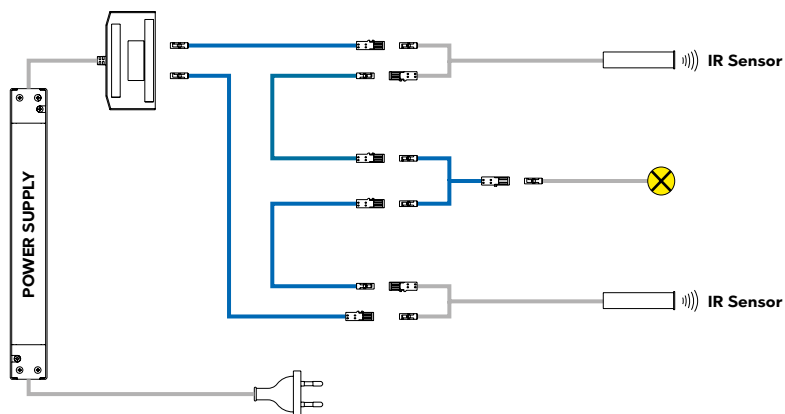


white



IR 3.0 FC is an infrared limit-switch sensor that automatically switches the connected devices ON and Off instantly when the door, behind which it is installed, is opened or closed. The detection range (max. approximately 300mm) varies depending on the finish and reflectivity of the door surface. To ensure proper operation, the sensor must be installed at least 2mm away from the door panel. It is therefore advisable to do a preliminary test before installation and avoid using IR 3.0 near heat sources or electromagnetic fields, which could alter or compromise its functioning. IR 3.0 FC integrates an automatic switch-off function that activates after approximately 18 hours of continuous operation.

The 2x IR 3.0 adapter wiring set (sold separately) allows to set a system with two sensors controlling a luminaire—or a set of luminaires—in a shared mode. For example, two IR 3.0 FC sensors can be installed inside a wardrobe with double hinged doors, enabling the light to turn ON when either door is opened, and to turn Off only when both are closed.



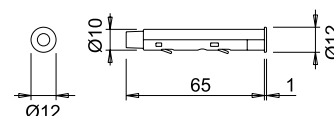
Upon first power-up, IR 3.0 performs a sensitivity self-test, which is saved. Any change in installation requires the luminaire to be reset, which must be done by cutting the power for at least 10 seconds. Do not connect the IR 3.0 power unit to a mains electrical circuit switch, as this could unintentionally trigger the self-test function.



### IR 4.0 FC

back-door sensor

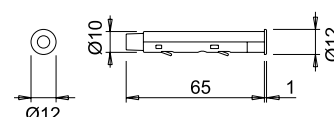
<b>Code</b>	F0126000043
<b>Input</b>	12-24VDC
<b>Output</b>	12-24VDC
<b>Power</b>	max 36W (12VDC) 72W (24VDC)
<b>Wiring IN</b>	2500mm Micro24 male
<b>Wiring OUT</b>	2500mm Micro24 female 150mm 10x Micro24 female



### IR 4.0 SD

sensor-dimmer switch

<b>Code</b>	F0126000042
<b>Input</b>	12-24VDC
<b>Output</b>	12-24VDC
<b>Power</b>	max 36W (12VDC) 72W (24VDC)
<b>Wiring IN</b>	2500mm Micro24 male
<b>Wiring OUT</b>	2500mm Micro24 female 150mm 10x Micro24 female



### IR ACCESSORIES

M24|M12 adapter cable set

<b>Code</b>	4015500
<b>Wiring IN</b>	100mm M24F M12M
<b>Wiring OUT</b>	150mm 10xM12F M24M



## IR 4.0

### Infrared sensor

IR 4.0 is an infrared sensor for controlling single-colour LED luminaires @12VDC (max 36W) and @24VDC (max 72W). It is factory-set in either "limit-switch" mode (IR 4.0 FC) for installation behind a cabinet door, or in "sensor-dimmer switch" mode (IR 4.0 SD) for under cabinet installation. The appliance has a setup button that allows the function of both models to be changed at any time, from FC to SD and vice versa. IR 4.0 can be recessed-mounted in a Ø10mm hole. In limit-switch mode, IR 4.0 activates the soft switching ON and Off of the luminaires connected to the output cable by opening and closing the door on the back of which the sensor is installed. With quick hand movements in front of the sensor, it is possible to control the switching ON/Off -always in soft mode- of IR 4.0 SD, while holding a hand steadily in front of the sensor adjusts (10-100%) the brightness. The device is supplied with a 2500mm power cable and Micro24 male connector, 2500mm output cable and Micro24 female connector, and distributor with 10 Micro24 female slots. To use IR 4.0 for controlling single-colour LED luminaires @12VDC (max 36W), an adapter cable set that configures the luminaire with the Micro12 connection system is available. Power supply not included, to be ordered separately.



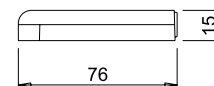
black



### IR 4.0 SP FC

back-door sensor

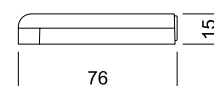
<b>Code</b>	F0126000084 (black) F0126000085 (white)
<b>Input</b>	12-24VDC
<b>Output</b>	12-24VDC
<b>Power</b>	max 36W (12VDC) 72W (24VDC)
<b>Wiring IN</b>	2500mm Micro24 male
<b>Wiring OUT</b>	2500mm Micro24 female 150mm 10x Micro24 female



### IR 4.0 SP SD

sensor dimmer switch

<b>Code</b>	F0126000103 (black) F0126000104 (white)
<b>Input</b>	12-24VDC
<b>Output</b>	12-24VDC
<b>Power</b>	max 36W (12VDC) 72W (24VDC)
<b>Wiring IN</b>	2500mm Micro24 male
<b>Wiring OUT</b>	2500mm Micro24 female 150mm 10x Micro24 female



### IR ACCESSORI

spacer SP for IR 4.0

Code	Model	Finish
F0007000039	SPACER SP IR 4.0	black
F0007000040	SPACER SP IR 4.0	white

## IR 4.0 SP

### Infrared sensor

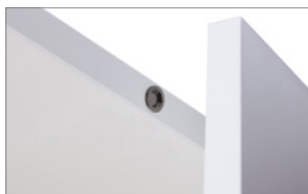
IR 4.0 SP is an infrared sensor for controlling single-colour LED luminaires @12VDC (max 36W) and @24VDC (max 72W). It is factory-set in either "limit-switch" mode (IR 4.0 FC) for installation behind a cabinet door, or in "sensor-dimmer switch" mode (IR 4.0 SD) for under cabinet installation. The appliance has a setup button that allows the function of both models to be changed at any time, from FC to SD and vice versa. IR 4.0 SP can also be surface-mounted under a shelf. In limit-switch mode, IR 4.0 SP activates the soft switching ON/Off of the luminaires connected to the output cable by opening and closing the door on the back of which the sensor is installed. With quick hand movements in front of the sensor, it is possible to control the switching ON/Off -always in soft mode- of IR 4.0 SP SD, while holding a hand steadily in front of the sensor adjusts (10-100%) the brightness. The device is supplied with a 2500mm power cable and Micro24 male connector, a 2500mm output cable and Micro24 female connector, and distributor with 10 Micro24 female slots. To use IR 4.0 SP for controlling single-colour LED luminaires @12VDC (max 36W), an adapter cable set that configures the luminaire with the Micro12 connection system is available. Power supply not included, to be ordered separately.



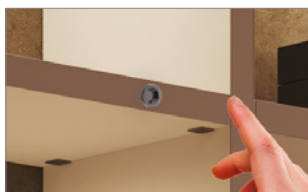
black



white



IR 4.0 FC is an infrared (limit-switch) sensor that automatically activates the soft-on and soft-off switching, with a maximum fade time of 2.5 seconds, of the luminaires connected to the output cable when the door to which the sensor is mounted on the back is opened or closed. The detection range (max. approximately 250mm) varies depending on the finish and reflectivity of the door surface. IR 4.0 FC can also be installed flush with the door without compromising its functionality. It is therefore advisable to do a preliminary test before installation and avoid using IR 4.0 near heat sources or electromagnetic fields, which could alter or compromise its functioning. See the instruction manual for more details.



IR 4.0 SD is an infrared sensor-dimmer switch that switching ON/Off and adjusts (10-100%) the brightness of the luminaires connected to it. Switching ON and Off occurs in soft-on/soft-off mode with a fade time of up to 1 second and is activated by quick hand movements near the sensor, at a maximum distance of approximately 50mm. The brightness adjustment, which is activated by keeping a hand steadily in front of the sensor, is stored in memory, and maximum brightness is indicated by a brief flash of the connected luminaires. IR 4.0 SD integrates an automatic switch-off function that activates after approximately 18 hours of continuous operation.



The factory-set mode of IR 4.0 can be changed by the user at any time from FC (limit-switch) to SD (sensor-dimmer switch) and vice versa by pressing the setup button located on the back surface. See the instruction manual for more details.



Upon first power-up, IR 4.0 performs a sensitivity self-test, which is saved. Any change in installation requires the luminaire to be reset, which must be done by cutting the power for at least 10 seconds. Do not connect the IR 4.0 power unit to a mains electrical circuit switch, as this could unintentionally trigger the self-test function.