

VEVOR[®]

TOUGH TOOLS, HALF PRICE

Technical Support and E-Warranty Certificate www.vevor.com/support

OPERATING INSTRUCTION

MODEL:AMG39

We continue to be committed to provide you tools with competitive price.

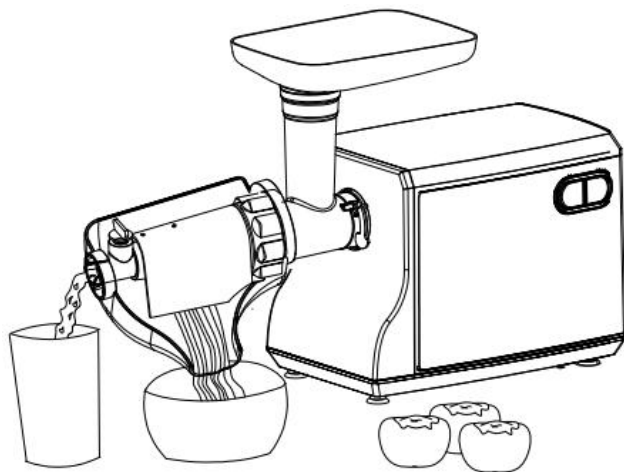
"Save Half", "Half Price" or any other similar expressions used by us only represents an estimate of savings you might benefit from buying certain tools with us compared to the major top brands and does not necessarily mean to cover all categories of tools offered by us. You are kindly reminded to verify carefully when you are placing an order with us if you are actually saving half in comparison with the top major brands.

VEVOR®

TOUGH TOOLS, HALF PRICE

Electric Tomato Strainer

MODEL:AMG39



NEED HELP? CONTACT US!

Have product questions? Need technical support? Please feel free to contact us:

 CustomerService@vevor.com

This is the original instruction, please read all manual instructions carefully before operating. VEVOR reserves a clear interpretation of our user manual. The appearance of the product shall be subject to the product you received. Please forgive us that we won't inform you again if there are any technology or software updates on our product.



WARNING: Read carefully and understand all ASSEMBLY AND OPERATION INSTRUCTIONS before operating. Failure to follow the safety rules and other basic safety precautions may result in serious personal injury.

FOR THE FIRST TIME

- ◆ Check that voltage indicated on the rating label corresponds to the mains voltage in your home.
- ◆ Wash all parts (except the body) in warm soapy water.
- ◆ Before plugging in, Do not press the button to avoid electric equipment failure.

TECHNICAL SPECIFICATIONS

Model: AMG39

Property	Specifications
Voltage	AC120V / 60Hz
Power	400W
Speed control mode	Rotary speed control
Reverse function	Yes



SAFETY INFORMATION



WARNING

- This product and related accessories contain chemicals known to the State of California to cause cancer, congenital disabilities or other reproductive harm.
- Risk of sudden starts: Can cause electrical shock and personal injury. The pump motor has an automatically resetting thermal protector and may restart unexpectedly.
- DO NOT plug in the pump while standing in water or on a wet or damp surface.
- DO NOT use in water where fish are present (oil in the motor can kill fish).
- DO NOT pick up the pump by the power cord.
- Protect the electrical cord from sharp objects, hot surfaces, oil, and chemicals. Avoid kinking the cord. Unplug the pump before servicing it or attempting to clean it.
- Secure the discharge hose before starting the pump. An unsecured discharge hose may whip, which can cause personal injury and property damage.
- Keep the pump, base, and inlet screen free of debris and foreign objects.
- Never enter pool water or swim if the pump is present in the water for risk of shock or personal injury.

IMPORTANT SAFEGUARDS

- ◆ Home use only. Please do not use it for industrial purposes.
- ◆ Unplug when assembling and disassembling the unit.
- ◆ Close supervision is necessary when any appliance is used near children.
- ◆ When carrying the unit, hold the body with both hands. Do not carry the unit by the hopper plate or head.
- ◆ Never push products by hand. Use a food pusher.
- ◆ Do not grind hard food such as bones, nuts, etc.
- ◆ Do not grind ginger and other materials with hard fiber.
- ◆ Continuous running of the meat grinder should be at most 10 minutes with the

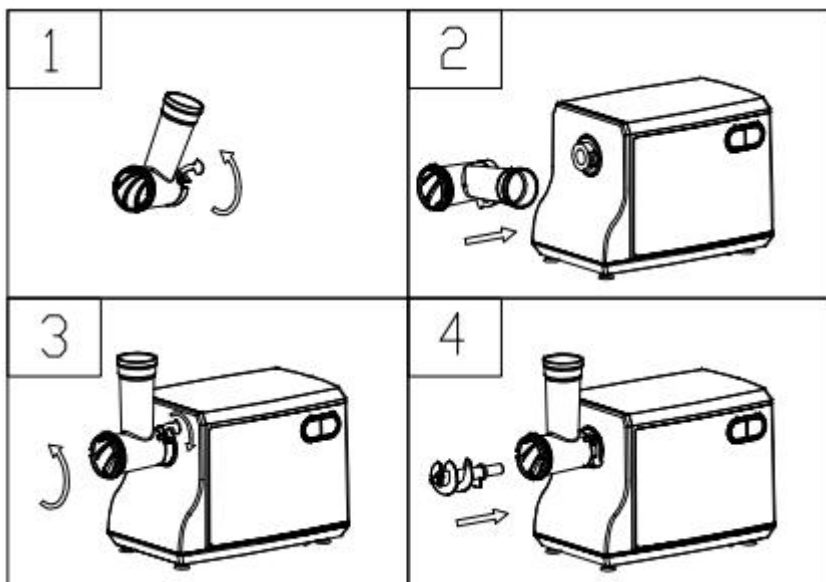
following 10-minute interval for motor cooling.

- ◆ Operate the unit from “START” to “REVERSE” or from “REVERSE” to “START” after the previous working condition stops more than 30 seconds, or it may cause some abnormal cases such as moving up and down and quickly destroy the unit.
- ◆ To avoid jamming, do not force the unit to operate with excessive pressure. When the circuit breaker activates, do not switch it on.
- ◆ Never try to replace the parts and repair the unit by yourself.
- ◆ This appliance is not intended for use by persons (including children) with reduced physical, sensory, or mental capabilities or lack of experience and knowledge unless they have been given supervision or instruction concerning the use of the appliance by a person responsible for their safety.
- ◆ Children should be supervised to avoid playing with the appliance.
- ◆ Do not operate this appliance if the cord or plug is damaged. Return it to the store of service or repair by a professional serviceman.
- ◆ This appliance is intended to be used in the household only.
- ◆ If the supply cord is damaged, it must be replaced by the manufacturer, service agent, or similarly qualified persons to avoid a hazard.

INSTALLATION INSTRUCTIONS

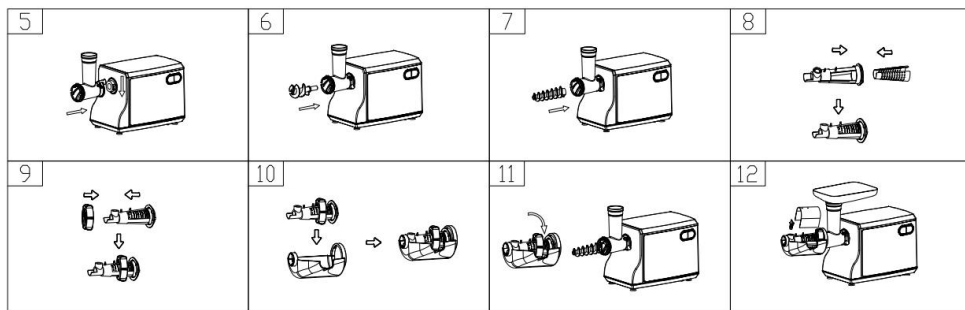
ASSEMBLING

- ◆ hold the head and insert it into the Head inlet (fig.1.2). And press the Locker, then move the head anticlockwise so that the head being fastened tightly . (fig.3)
- ◆ Place the snake into the head, long end first, and turn to feed the screw slightly until it is set into the motor housing (fig.4).



PRESSING TOMATOES

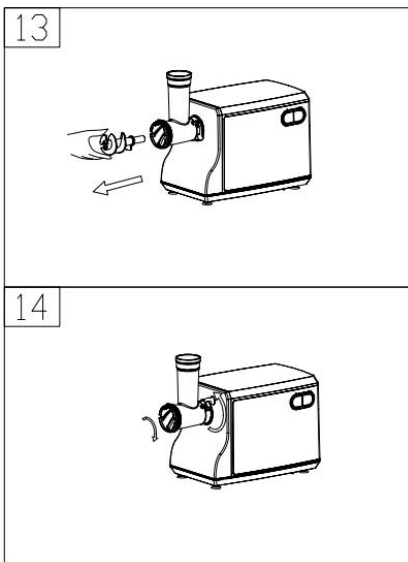
- ◆ Place the head into the head inlet, and press the locker tightly. (fig.5)
- ◆ Place the snake into the head, long end first, and turn to feed the screw slightly until it is set into the motor housing (fig.6).
- ◆ Place the self-contained tomato stem (fig.7).
- ◆ Place the tomato mesh into the tomato stents. (fig.8).
- ◆ Place the fixing ring onto the tomato stents (fig.9), then put them together into the funnel(fig.9).
- ◆ Place the installed funnel into the head, and screw the fixing ring tightly (fig.11).
- ◆ Place the adjustment knob lock onto the tomato stents, then put the block juice plank on it (fig.12).
- ◆ Please put the tomatoes into the hopper plate after the tomatoes are wishing clear. And then use the food pusher to pressure down.



CLEANING AND MAINTENANCE

DISASSEMBLING

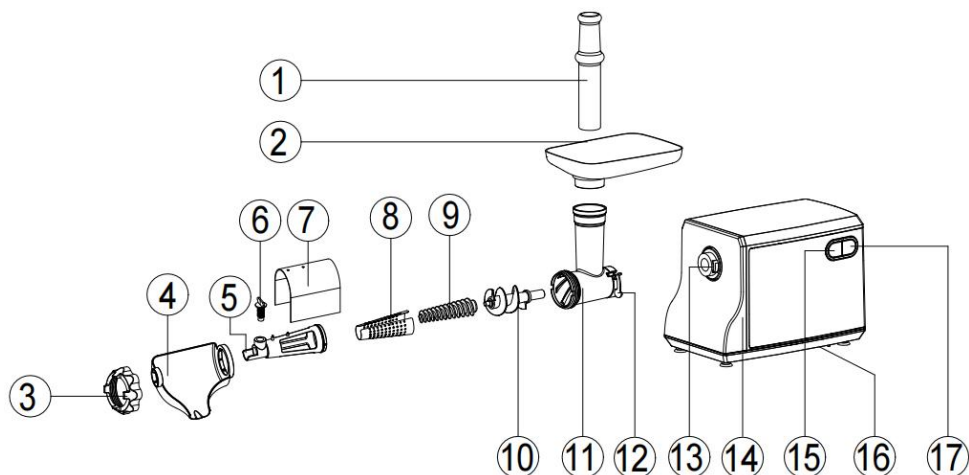
- ◆ Make sure that the motor has stopped completely.
- ◆ Disconnect the plug from the power outlet.
- ◆ Disassemble by reversing the steps from 8-12 pictures.
- ◆ Place the snake out of the head(fig.13).
- ◆ Press the lock Clockwise, move the head as per the direction illustrated in fig 14, then you can take out the head.



CLEANING

- ◆ Remove foods, etc. Wash each part in warm soapy water.
- ◆ A bleaching solution containing chlorine will discolor aluminum surfaces.
- ◆ Do not immerse the motor housing in water. Only wipe it with a damp cloth.
- ◆ Thinners and petrol will crack or change the color of the unit.
- ◆ Wipe all the cutting parts by vegetable oil -a wet cloth

PARTS DIAGRAM



PARTS LIST

Part No.	Description
1	Food pusher
2	Hopper plate
3	Fixing ring
4	Funnel
5	Tomato stents
6	Adjustment knob
7	Block juice plank
8	Tomato mesh
9	Tomato self-contained stem
10	Snake
11	Head

12	Lock
13	Gear box connector
14	Body
15	Reverse button
16	Tibet line holes
17	ON/OFF button

Manufacturer: Zhongshan Aouball Electric Appliances Co., Ltd.

Add.: No. 1, Wanrui Street, Nantou Town, ZHONGSHAN CITY Guangdong

Made In China

VEVOR[®]

TOUGH TOOLS, HALF PRICE

Technical Support and E-Warranty Certificate

www.vevor.com/support