

# SMART LOCK

## Manual

F20



A

成品尺寸:140\*200MM 翻页 中间装钉

## Installation Video

Please watch our easy step by step installation videos before attempting to install your Touchscreen Smart Lock



You can search for Smart Lock to view the video on youtube  
if you have questions regarding the installation process

## Important Notes

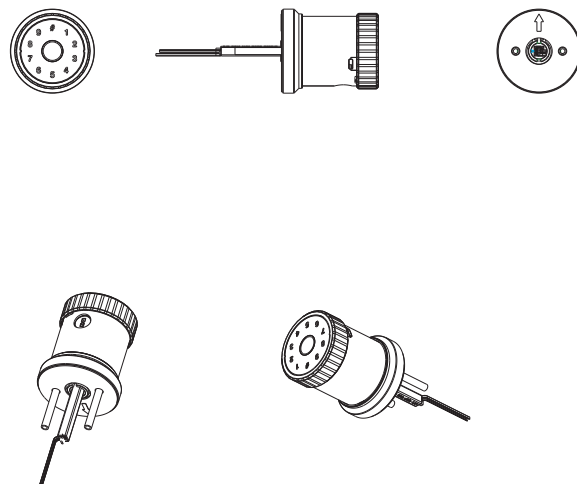
- Do not use a power drill for installation
- Install and test the lock with the door open to avoid being locked out
- Please read all the instructions before returning the product to the store
- **DO NOT** install the batteries before installing the lock !  
**Follow the instructions in sequential order !**
- If you have previously installed this lock on another door, you must perform a **Factory Default Reset FIRST ! See the User Guide for more information.**
- This lock is designed for the following operating temperatures :  
Outside Lock Body(exterior mounted): -31 °F( -35 °C) to 158°F(70°C)  
Inside Lock Body(interior mounted): 14°F(-10°C) to 131°F(55°C)

## SPECIFICATIONS:

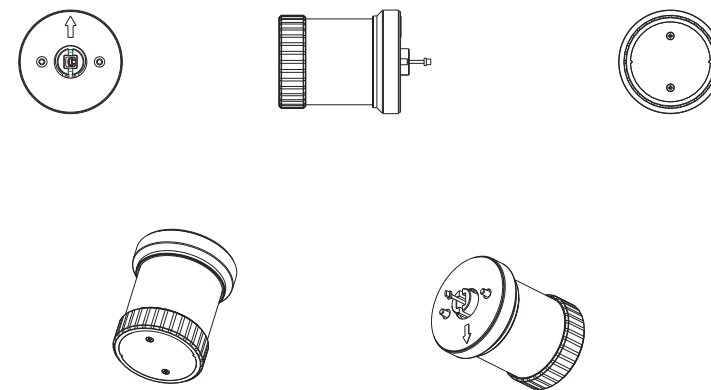
1. Front Lock Size: 70mm\*80mm . Rear Lock Size: 70mm\*80mm  
(refer to the illustration)
2. Suitable for installation of door thickness range: 35mm~50mm
3. Specification of mounting hole: Diameter 45~60mm
4. Power supply: 4 x AA batteries . Emergency power supply:  
Type-C charging port.
5. Standby current:  $\approx 100\mu\text{A}$ . Unlocking current:  $\approx 280\text{mA}$
6. Low power prompt voltage 4.4V (Voice prompt)
7. Unlocking Mode: SmartPhone TUYA APP、Touch Panel  
Password Code、Fingerprint、Mechanical Keys.
8. Normally-on operation mode can be set on the APP.

### 9. Product illustration:

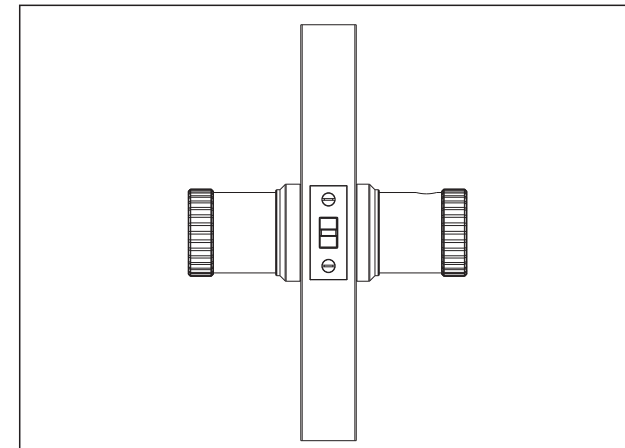
9.1: Front Panel .



9.2: Rear Panel.

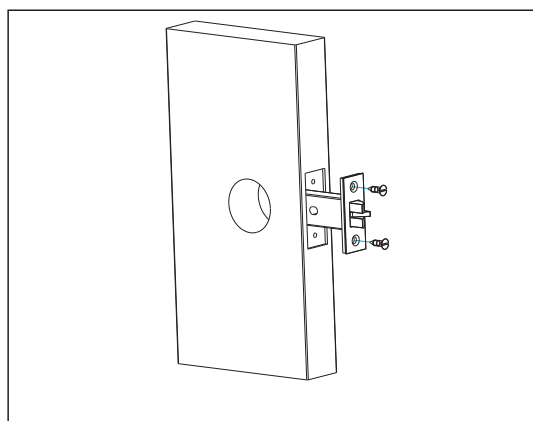


9.3 Finished product illustration.

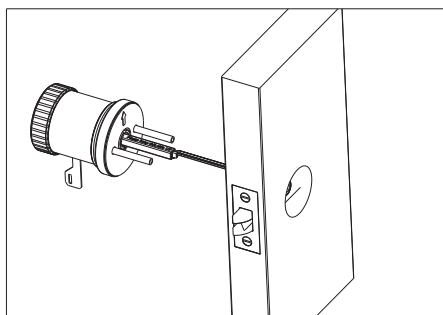


### 10. Installation procedure:

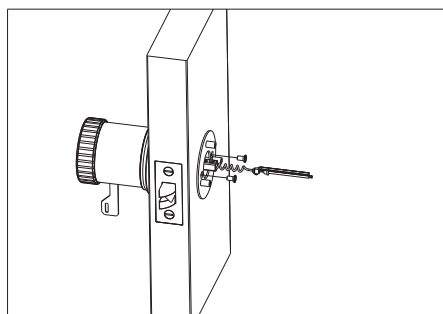
- 10.1: Use bore hole drawing to open the door, Then install latch



10.2: Install the front panel, **Please install according to the warning mark.**

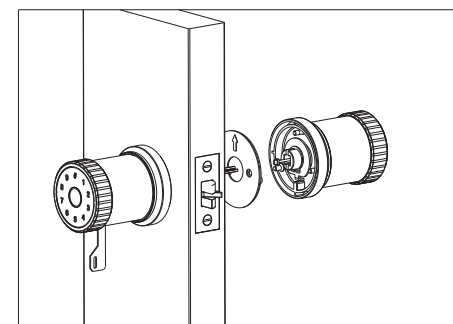


10.3: Install the closure plate to secure it to the front panel. screw in the set screw and pull out the spring.

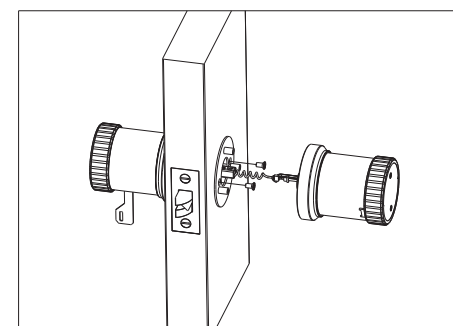


-4-

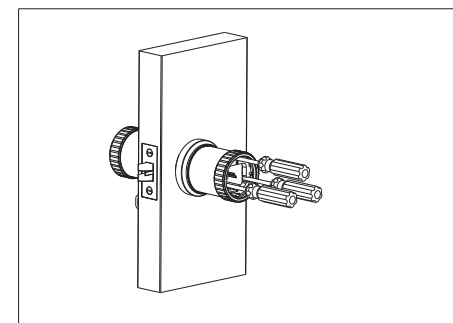
10.4: Install the rear panel.



10.5: Connect the power cord between the rear panel and the front panel.

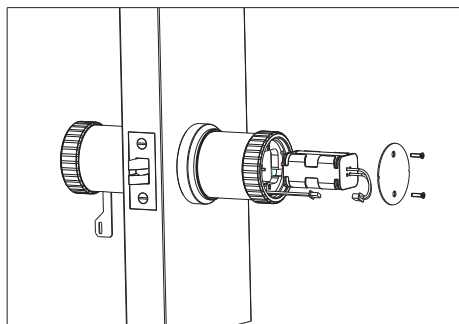


10.6: Need to keep parallel to screw on three screws, can not be crooked. Otherwise, the lock will be stuck.



-5-

10.7: Take out the battery box. install 4 x AA batteries. replace the battery box and screw in the screws.



**KINDLY REMINDER:**

**Do not close the door after installation. Please test the function of the lock and save the mechanical key**