

Fingerprint Lock

USER MANUAL(V1.1)

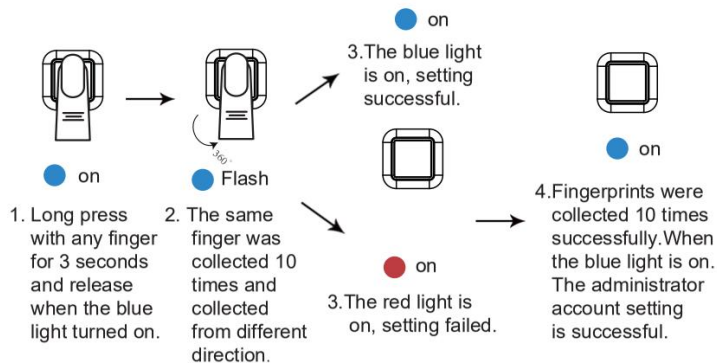


Your finger is the key

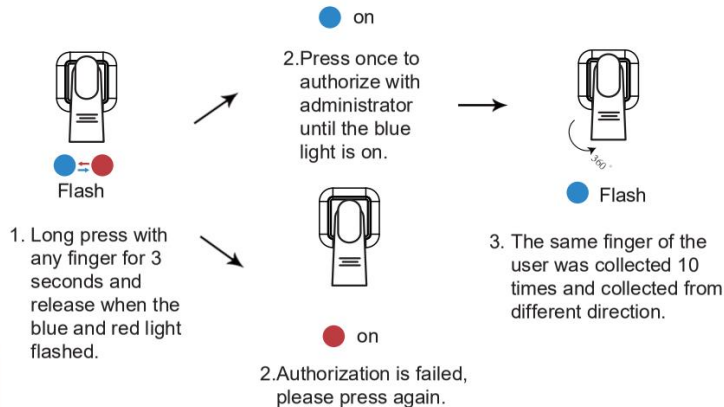
Tip

- If the model you purchased is FL-U3&FL-U3BT please press the button to wake up the lock, and then press the fingerprint to unlock or enter.

Set Administrator Account For The First Time



Second To Tenth User Fingerprint Entry



● on

4.The blue light is on,
setting successful.



● on

4.The red light is on,
setting failed.



● on

5.Fingerprints were collected
10 times successfully.When
the blue light is on, the user
account setting is successful.

Delete



● = ●
Flash

1.Press the panel
for 6 to 10 seconds.



● Flash

2. Release your finger
when the red light
flashed, then authorized
to delete with the
administrator's fingerprint.



● Flash

3.The red light is on, the
deleting is successful.

3.The red light flashing,delete
failed.Please identify the
correct administrator
fingerprint or start over
again.

**Tip: All products can delete fingerprints by the administrator,
Bluetooth lock can also use APP to restore factory Settings.**

Remarks

- The default first fingerprint is the administrator's account.
- The second to the tenth fingerprint is the user account, which needs the administrator's confirmation.
- When collecting fingerprints, one user collects as many fingerprints as possible.
- Please charge if the green light flashes when you touched the sensor.If the model you purchased is FL-U9 series fingerprint lock,the red light flashes. Please charge in time.
- The Bluetooth lock product only collects fingerprints 5 times.

Specification

USB type-C input	DC5V/200mA
Battery	3.7V≥100mAH ○ /120mAH ○ /260mAH ○
Fingerprint collecting time	≤0.5S
Fingerprint matching time	≤1S
Working temperture	-20℃~55℃
Working humidity	40%RH ~90%RH
False reject rate	<1%
False accept rate	<0.002%
Memory capacity	10 sets ○ 40 sets ○