



# Countdown Timer Switch

• MT11N •



## Specifications:

Model: MT11N  
Incandescent Load: 960W  
Power: 120VAC, 60Hz  
Tungsten: 1200W  
Resistive: 1800W  
Motor: 1/2 HP  
Time Delay: 1m / 5m / 10m / 15m / 30m / 1hr  
Humidity: 95% RH, non-condensing  
Temperature Range: 32° F~104° F

Indoor use in dry location

## Part I. Installation

### DESCRIPTION

The MT11N is a timer switch with 6 preset time buttons and 1 Manual ON/OFF button. All Loads connect to this timer will automatically turn OFF when the selected time expires. The 6 selectable times are 1 Min, 5 Min, 10 Min, 15 Min, 30 Min, and 1 Hours.

### FEATURES

Easily replaces a standard single pole Light or Fan switch.  
Compatible with most types of lights.

### How to use it?

1. Preset Buttons: Press the button then LED indicator flashes 2 times.
2. There are 6 buttons with preset times of 1 Min, 5 Min, 10 Min, 15 Min, 30 Min, and 1 Hour.
3. Press and release the "on" button, you can adjust required countdown time.
4. When the Load is OFF, press and release the "on" button can adjust required time, once the time is over, the Load turn off automatically.
5. When load is OFF, press the release "on" button, correctly the time is last selected timer preset.
6. Keep the load is ON, hold the "on" button for 3s, no change, if you press this button again, the device will clear preset timer.

### How to set up LED indicator brightness?



4. 1 Min: Hold the button (1 Min) 5s: the LED indicator flashes quickly to set Countdown Timer turn ON/OFF
  5. Hold the button (30 Min) until all indicators light up, keep pressing the button to adjust a lower brightness then release the button.
1. LED indicator: (Be default light up)
  2. LED indicator: (Be default light up) Hold the button (5 Min) 5s: The LED indicator flashes 3s then setting
  3. Hold the button (1 Hour) until all indicators light up, keep pressing the button to adjust a higher brightness then release the button.

### HOW TO INSTALL THE WIRES

1. **Unscrew:** Carefully turn the screw counterclockwise to leave enough space for the wire to be inserted. Do not unscrew the screws completely.
2. **Press down:** Once loosened, use your finger so it catches the thread.
3. **Insert the wire:** Make sure the wire is completely straight, then insert it into the terminal while holding down the screw. Do not wrap the wire around the screw!
4. **Tighten:** Turn the screw clockwise to tighten the wire. Make sure the wires are locked!

**Note:** There are 2 holes for each terminal can be used in the connection. You can use a jump wire or the second hole at the terminal to connect.

### WARNING

Read and understand these instructions before installing. It is recommended that a qualified electrician performs this installation. Make sure to turn off the circuit breaker or fuse(s) and make sure power is off before wiring the device.

This device is intended for installation in accordance with the National Electric Code and local regulations.

Use Copper wires ONLY.

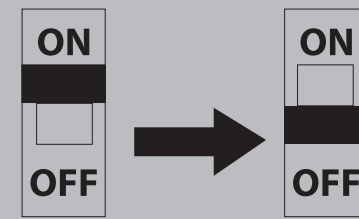


★ Please contact us if you have any questions:

[ask@minoston.com](mailto:ask@minoston.com)

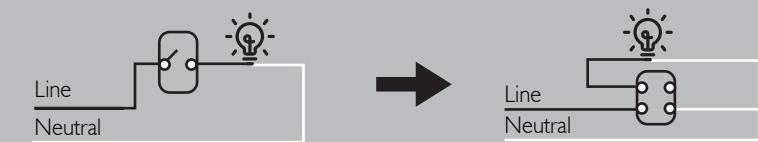
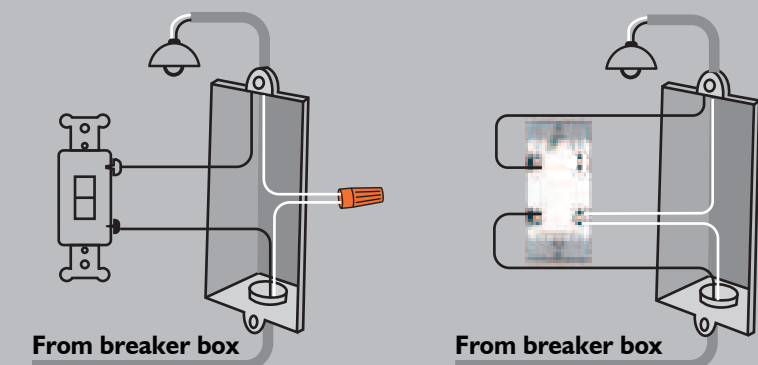
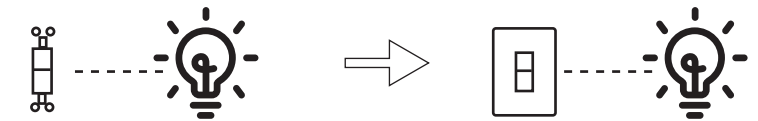
[ask@minoston.com](mailto:ask@minoston.com)

1. Tool: Please prepare a flat head screwdriver.
2. Turn power OFF at circuit breaker or fuse box.



3. Remove wallplate.
4. Remove the switch mounting screws.
5. Disconnect the wires and label them after remove the old switch. (Please use our sticker)
6. Carefully remove the switch from the switch box. (DO NOT disconnect the wires.)
7. There are up to five screw terminals on the smart switch, these are marked (Please check <HOW TO INSTALL THE WIRES>)
8. Fix the wallplate with screws after wiring succeed. (Please use our screws.)
9. The Ground was excluded from the diagram to simplify the illustration. Please Make sure all ground wires are connected to all switches respectively.

### Single - pole wiring



### FCC

This device complies with part 15 of the FCC and Industry Canada license-exempt RSS standard(s). Operation is subjected to the following two

### conditions:

- (1) This device may not cause harmful interference,
- (2) This device must accept any interference received, including interference that may cause undesired operation.

**FCC NOTE:** The manufacturer is not responsible for any radio or TV interference caused by unauthorized modifications to this equipment. Such modifications could void the user's authority to operate the equipment.

- Reorient or relocate the receiving antenna.
- Increase the separation between the equipment and receiver.
- Connect the equipment into an outlet on a circuit different from that to which the receiver is connected.
- Consult the dealer or an experienced radio / TV technician for help.

**NOTE:** This equipment has been tested and found to comply with the limits for a Class B digital device, pursuant to Part 15 of the FCC Rules. These limits are designed to provide reasonable protection against harmful interference in a residential installation. This equipment generates, uses and can radiate radio frequency energy and, if not installed and used in accordance with the instructions may cause harmful interference to radio communications. However, there is no guarantee that interference will not occur in a particular installation. If this equipment does cause harmful interference to radio or television reception, which can be determined by turning the equipment off and on, the user is encouraged to try to correct the interference by one or more of the following measures:

**Important note:** To comply with the FCC RF exposure compliance requirements, no change to the antenna or the device is permitted. Any change to the antenna or the device could result in the device exceeding the RF exposure requirements and void user's authority to operate the device.

### CAUTION - PLEASE READ!

This device (MT11N) is intended for installation in accordance with the National Electric Code and local regulations in the United States, or the Canadian Electrical Code and local regulations in Canada. If you are unsure or uncomfortable about performing this installation consult a qualified electrician.

### WARNING - SHOCK HAZARD

Turn off the power to the circuit for the switch and lighting fixture at the service panel (circuit breaker) prior to installation. all wiring connections must be made with the power off to avoid personal injury and/or damage to the switch.

### OTHER WARNINGS

Risk of Fire  
Risk of Electrical Shock  
Risk of Burns

### WARRANTY

Our Products warrants this product to be free from manufacturing defects for a period of one year from the original date of consumer purchase. This warranty is limited to the repair or replacement of this product only and does not extend to consequential or incidental damage to other products that may be used with this product. This warranty is in lieu of all other warranties, expressed or implied. Some states do not allow limitations on how long an implied warranty lasts or permit the exclusion or limitation of incidental or consequential damage, so the above limitations may not apply to you. This warranty gives you specific rights, and you may also have other rights which vary from state to state.